

**LANE CLOSURE  
LOW SPEED MULTILANE  
< / = 35 MPH  
PRIMARY & SECONDARY ROUTES**

1. These lane closures are restricted to maximum distances of 2 miles unless otherwise directed by the District Engineering Administrator.
2. Measure all advance warning sign locations from the beginning of the taper.
3. Install advance warning signs mounted on portable sign supports no less than 4 feet from the near edge of the sign to the near edge of an adjacent travel lane on roadways with grass shoulders and no less than 6 feet from the near edge of the sign to the near edge of an adjacent travel lane on roadways with paved shoulders. When a curb & gutter is present, install the sign no less than 2 feet from the near edge of the sign to the face of the curb.
4. On primary and secondary routes, the minimum mounting height of signs mounted on portable sign supports is 1 foot during this traffic control setup.
5. The advance warning sign placement intervals illustrated are for normal conditions. Adjustments to the distance intervals between the signs may be necessary due to sight distance restrictions such as curves and hills.
6. Install and operate a trailer mounted advance warning arrow panel within the taper of a single lane closure. Place the advance warning arrow panel on the roadway shoulder at the beginning of the taper. However, where the shoulders are narrow or site conditions restrict the use of the shoulder areas adjacent to the beginning of the taper, place the advance warning arrow panel behind the channelizing devices as close as practical to the beginning of the taper. Placement of the advance warning arrow panel at the beginning of the taper is preferred.
7. During daytime hours, 28" or 36" standard traffic cones may be utilized for delineation of the lane closure. The 28" and 36" standard traffic cones used during daytime hours are not required to be reflectorized.
8. During nighttime hours, portable plastic drums or 42" oversized traffic cones are required for delineation of the lane closure.
9. If a daytime work operation extends into the nighttime hours, replace 28" or 36" standard traffic cones with portable plastic drums or 42" oversized traffic cones.
10. Reflectorize all portable plastic drums and 42" oversized traffic cones with Type III flexible microprismatic retroreflective sheeting.
11. If work is being conducted at two different locations at the same time in the same travel lane on a low speed roadway,  $\leq 35$  MPH, separate the two locations by no less than 1 mile from the end of the first lane closure to the beginning of the taper of the second lane closure.
12. If work is being conducted at two different locations at the same time in different travel lanes on a low speed roadway,  $\leq 35$  MPH, separate the two locations by no less than 2 miles from the end of the first lane closure to the beginning of the taper of the second lane closure.
13. When a truck mounted attenuator is used, maintain the truck mounted attenuator approximately 100 feet in advance of the work activities.
14. Conduct the work in such a manner to avoid encroaching into the adjacent travel lane open to traffic.

15. A trailer mounted changeable message sign is not required but is optional. When a trailer mounted changeable message sign is utilized, install the changeable message sign on the shoulder of the roadway no less than 6 feet from the near edge of the sign to the near edge of the adjacent travel lane when space is available. When the 6 foot space or right-of-way is unavailable, place the trailer mounted changeable message sign at the greatest possible distance up to 6 feet from the near edge of the adjacent travel lane. When a trailer mounted changeable message sign is placed within the limits of a paved shoulder or remains in place adjacent to a travel lane regardless of shoulder type when inoperative, supplement the trailer mounted changeable message sign location with no less than 5 portable plastic drums placed between the sign and the adjacent travel lane for delineation of the sign location. This requirement for delineation of the sign location applies at all times under the aforementioned conditions during which the sign is within 15 feet of the near edge of a travel lane open to traffic. Use of 28" or 36" standard traffic cones or 42" oversized traffic cones as substitutes for the portable plastic drums in this application is PROHIBITED. The sign shall flash alternately to read "RIGHT LANE CLOSED", "MERGE LEFT" or "LEFT LANE CLOSED", "MERGE RIGHT" as necessary. Also, the messages shall flash at a rate to permit motorists to read both messages at least once.

16. This traffic control setup for a lane closure is only acceptable on low speed roadways with a posted regulatory speed of 35 MPH or less.

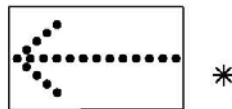
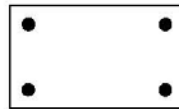
DRAWING 505-01  
LANE CLOSURE  
LOW SPEED MULTILANE  
≤ 35 MPH  
PRIMARY & SECONDARY ROUTES

( OPTIONAL )  
TRUCK MOUNTED  
ATTENUATOR

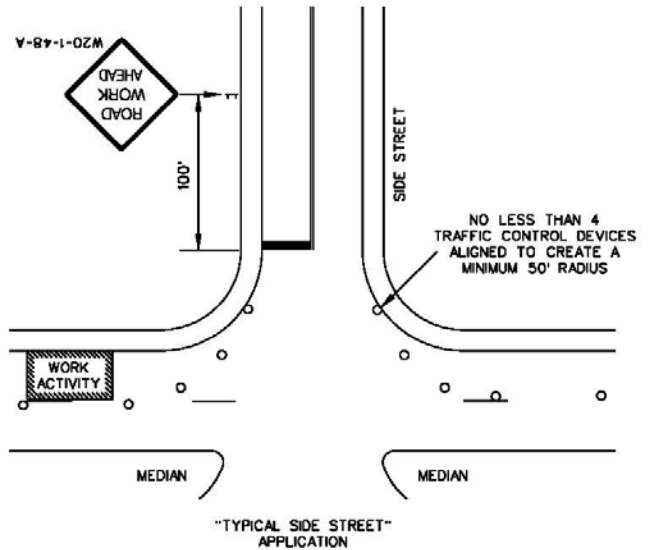
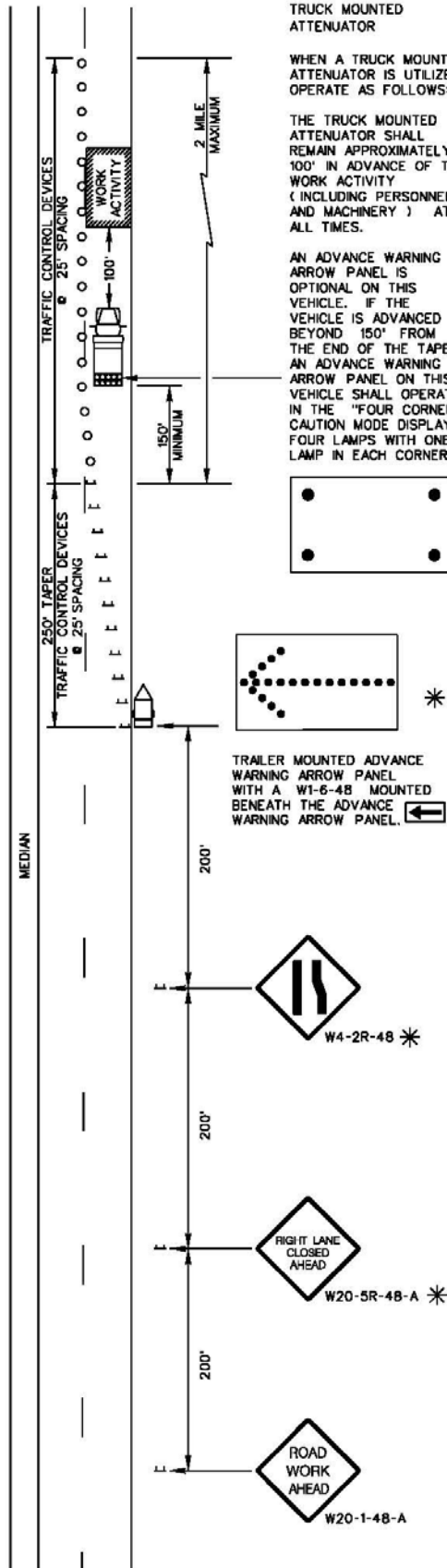
WHEN A TRUCK MOUNTED  
ATTENUATOR IS UTILIZED,  
OPERATE AS FOLLOWS:

THE TRUCK MOUNTED  
ATTENUATOR SHALL  
REMAIN APPROXIMATELY  
100' IN ADVANCE OF THE  
WORK ACTIVITY  
( INCLUDING PERSONNEL  
AND MACHINERY ) AT  
ALL TIMES.

AN ADVANCE WARNING  
ARROW PANEL IS  
OPTIONAL ON THIS  
VEHICLE. IF THE  
VEHICLE IS ADVANCED  
BEYOND 150' FROM  
THE END OF THE TAPER,  
AN ADVANCE WARNING  
ARROW PANEL ON THIS  
VEHICLE SHALL OPERATE  
IN THE "FOUR CORNER"  
CAUTION MODE DISPLAYING  
FOUR LAMPS WITH ONE  
LAMP IN EACH CORNER.



TRAILER MOUNTED ADVANCE  
WARNING ARROW PANEL  
WITH A W1-6-48 MOUNTED  
BENEATH THE ADVANCE  
WARNING ARROW PANEL.



\* LEFT LANE CLOSURE

- 1.) SIGNS ILLUSTRATED ARE FOR A RIGHT LANE CLOSURE.
- 2.) WHEN CLOSING THE LEFT TRAVEL LANE, USE THE FOLLOWING:
  - 1 - W4-2L-48
  - 1 - W20-5L-48-A
- 3.) THE FLASHING ARROW AND W1-6-48 SHALL POINT TO THE RIGHT.