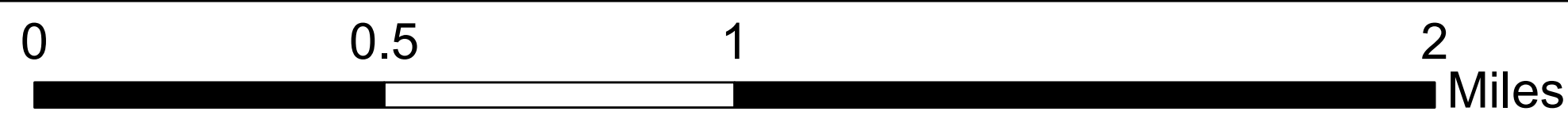


**Preliminary &
Subject to Change**

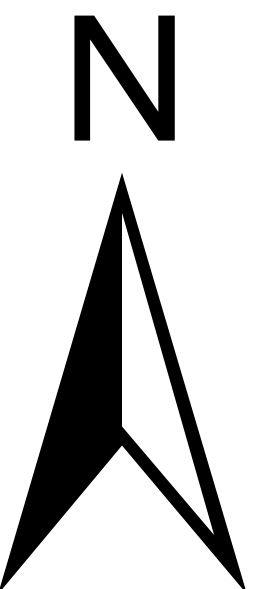


Corridor Segments

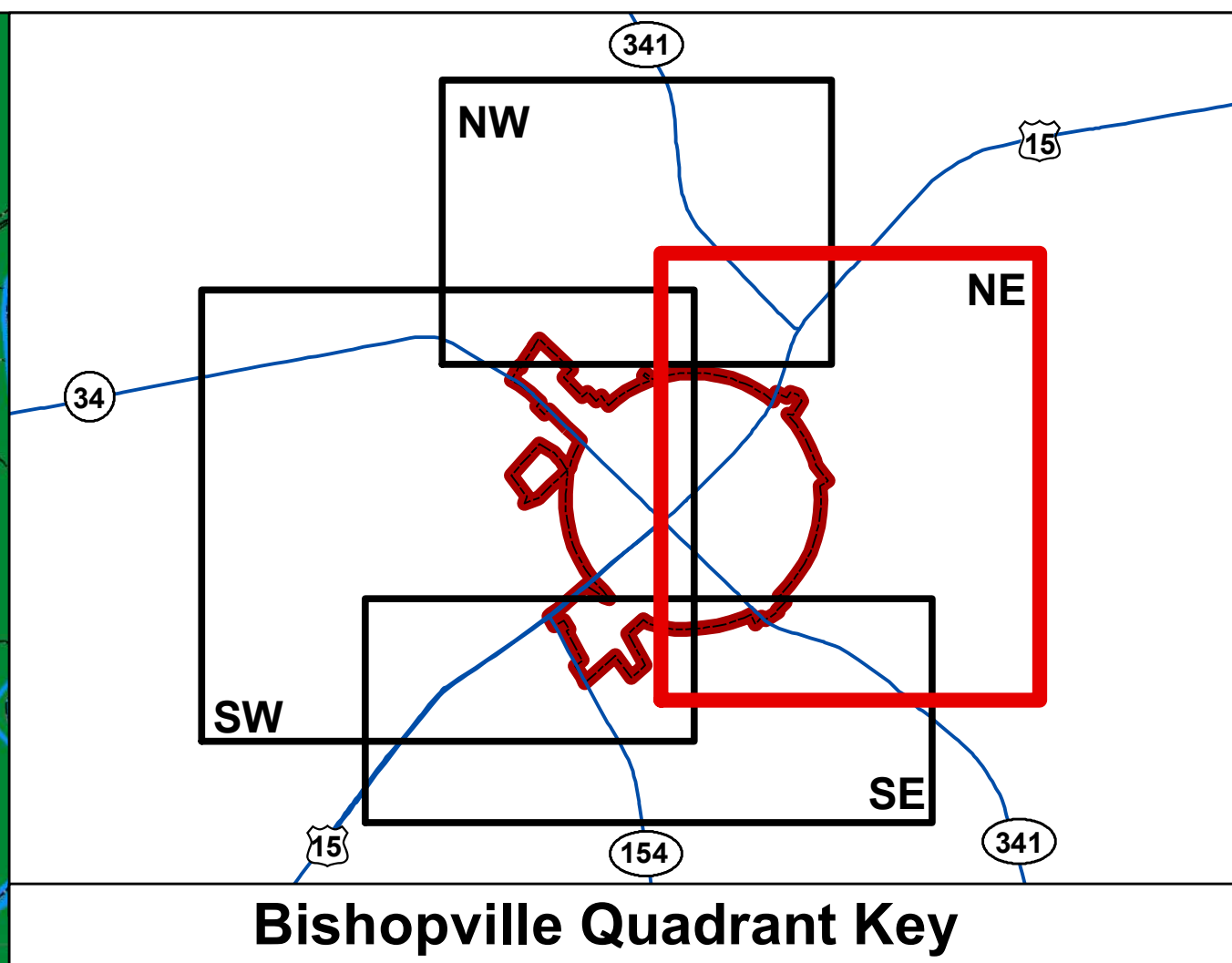
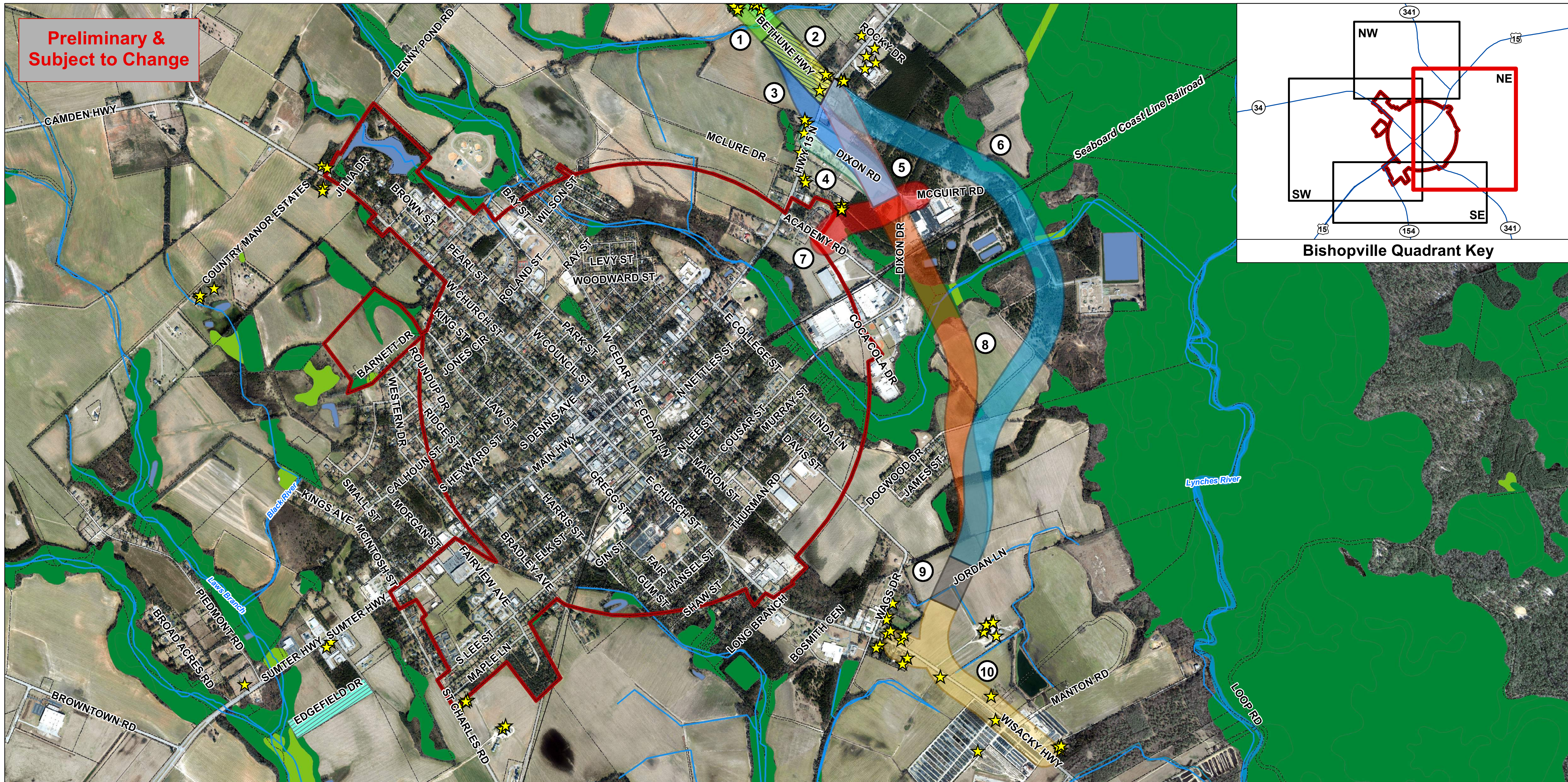


June 2018

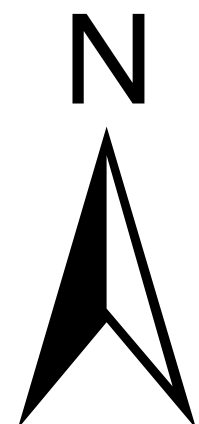
Architectural Resources	Segment 6 (500 ft)	Segment 15 (500 ft)	Segment 25 (500 ft)
Rivers & Streams	Segment 7 (500 ft)	Segment 16 (500 & 1,000 ft)	Segment 26 (500 ft)
Railroad	Segment 8 (500 ft)	Segment 17 (500 ft)	Parcels
Architectural Districts	Segment 9 (500 ft)	Segment 19 (500 ft)	Municipal Boundary
Segment 1 (500 ft)	Segment 10 (500 ft)	Segment 20 (500 ft)	Freshwater Wetland
Segment 2 (500 ft)	Segment 11 (500 ft)	Segment 21 (500 ft)	Forested Wetland
Segment 3 (500 ft)	Segment 12 (500 ft)	Segment 22 (500 ft)	Pond
Segment 4 (500 ft)	Segment 13 (500 ft)	Segment 24 (500 ft)	Riverine
Segment 5 (500 ft)	Segment 14 (1,100 ft)		



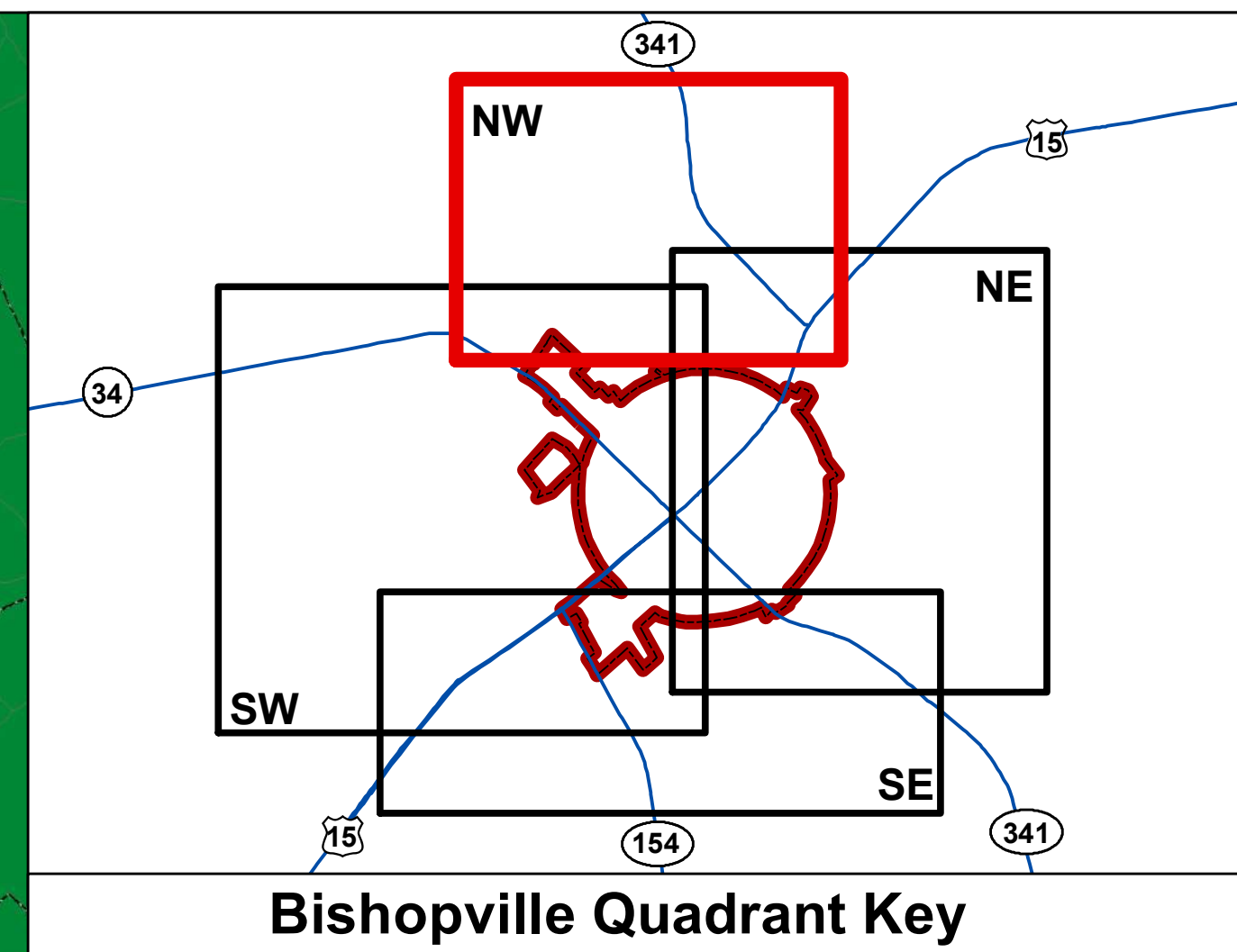
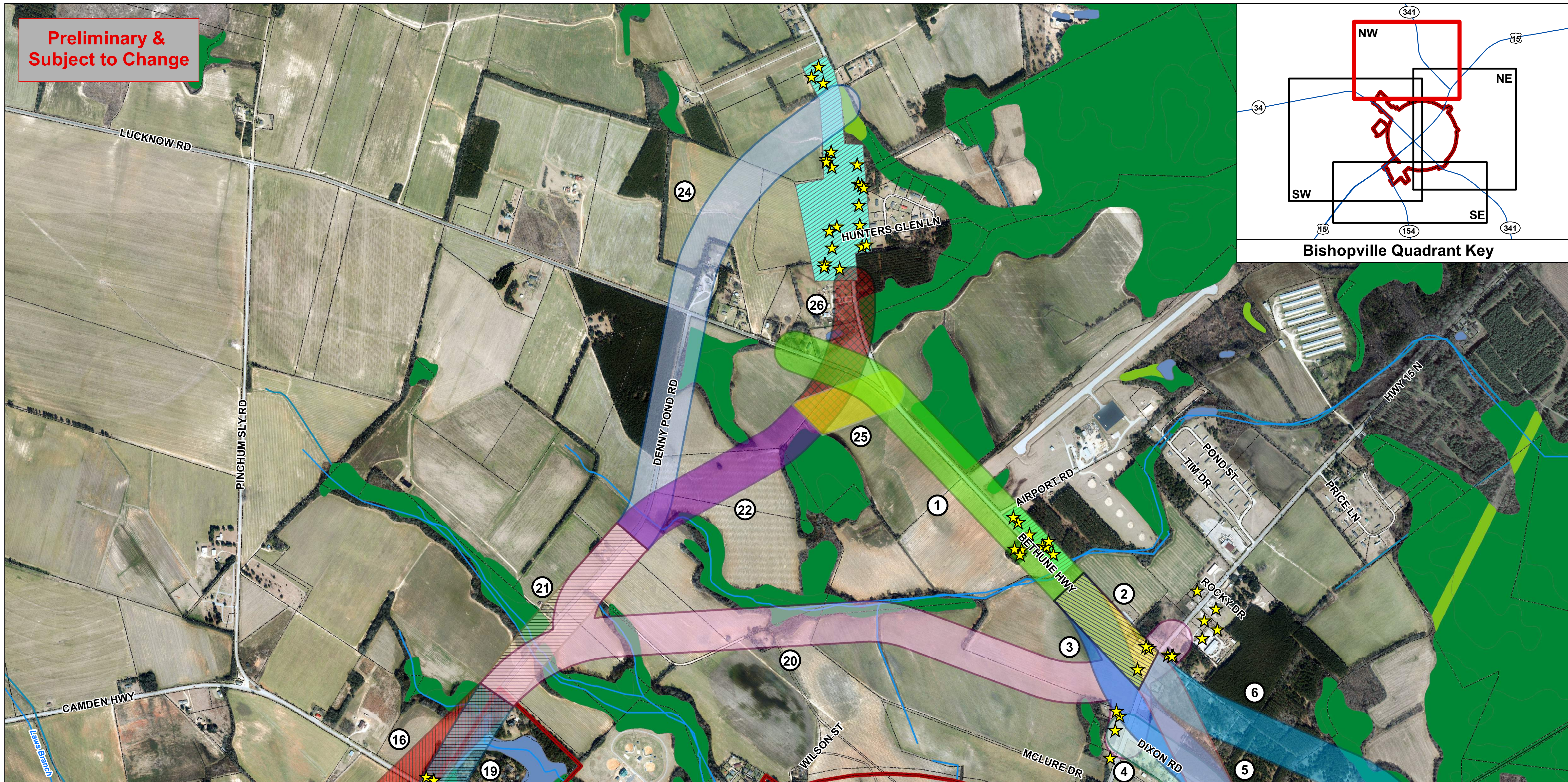
**Preliminary &
 Subject to Change**



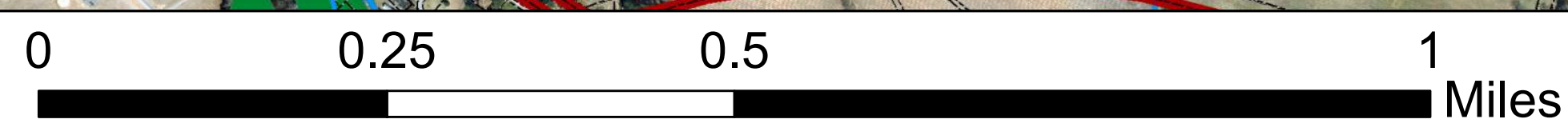
Northeast Quadrant		0 0.25 0.5 1 Miles			June 2018				
★	Architectural Resources	■	Segment 1 (500 ft)	■	Segment 5 (500 ft)	■	Segment 9 (500 ft)	■	Freshwater Wetland
—+—	Railroad	■	Segment 2 (500 ft)	■	Segment 6 (500 ft)	■	Segment 10 (500 ft)	■	Forested Wetland
— —	Rivers & Streams	■	Segment 3 (500 ft)	■	Segment 7 (500 ft)	■	Parcels	■	Pond
■	Architectural Districts	■	Segment 4 (500 ft)	■	Segment 8 (500 ft)	■	Municipal Boundary	■	Riverine



Preliminary &
 Subject to Change

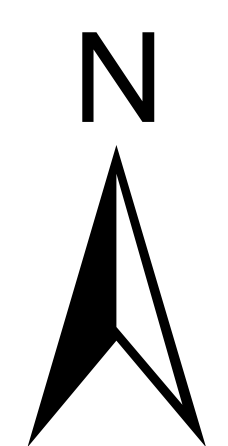


Northwest Quadrant

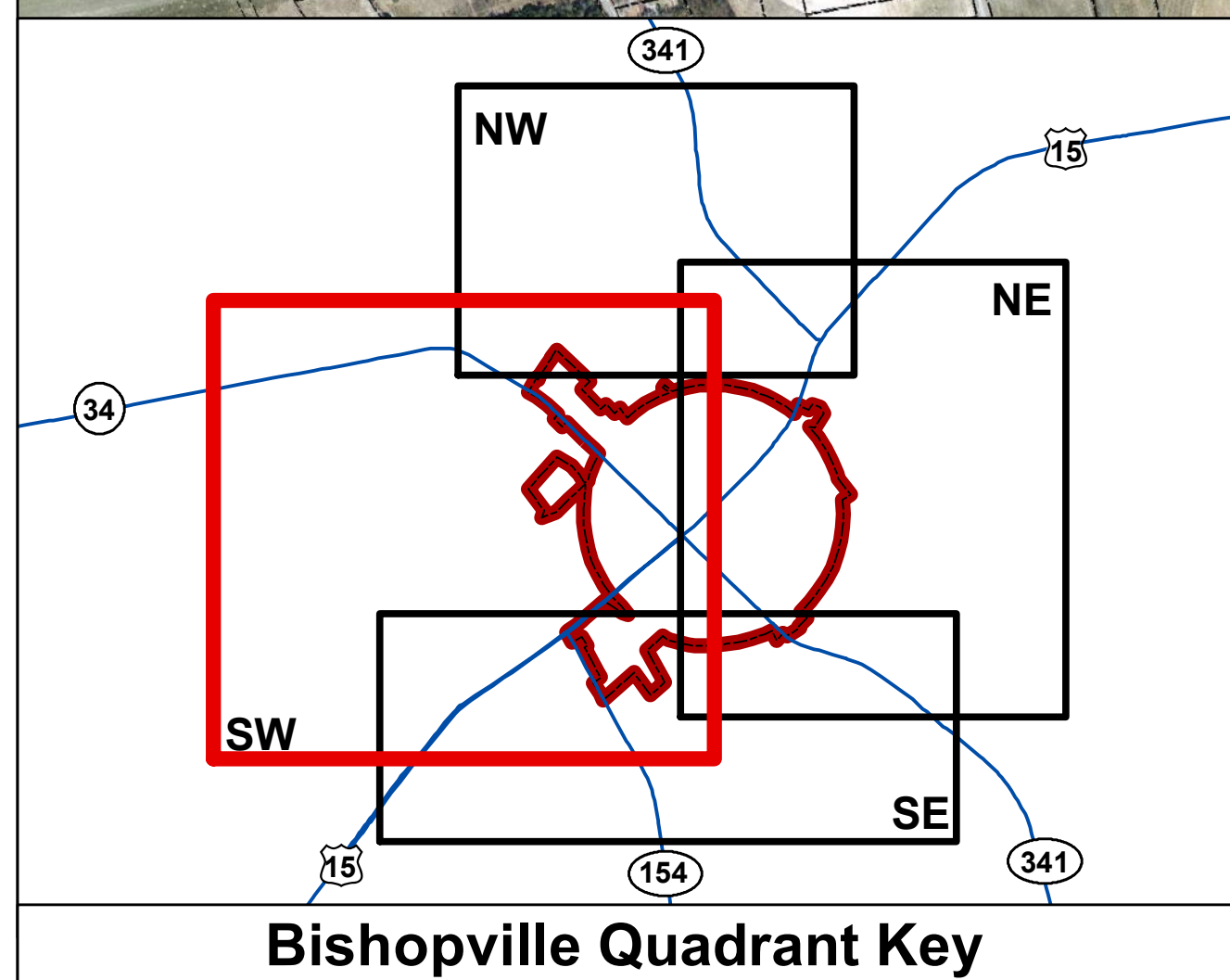
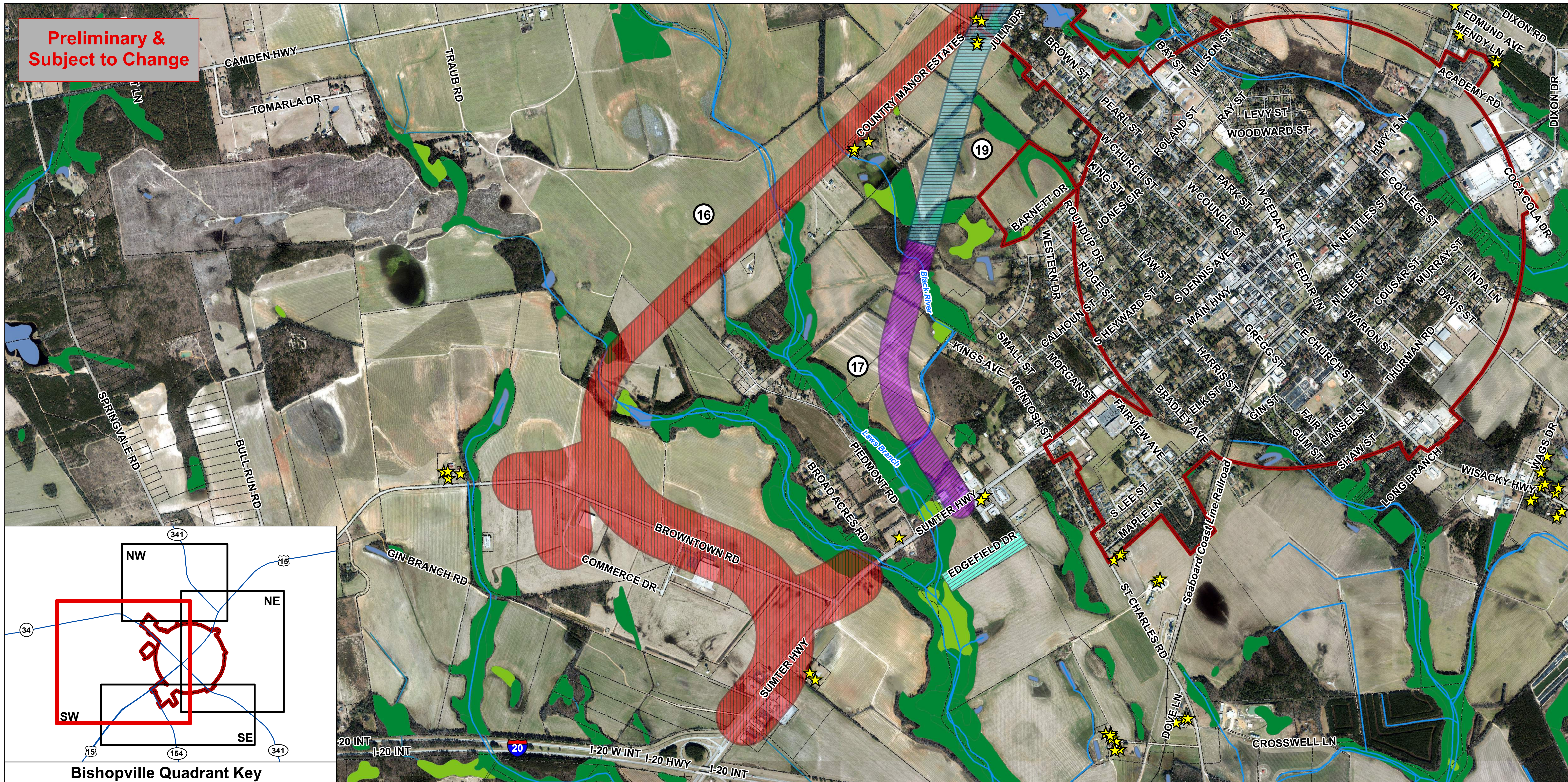


June 2018

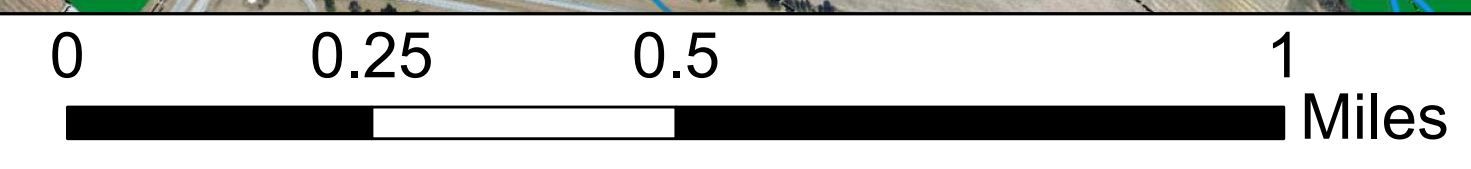
★	Architectural Resources		Segment 2 (500 ft)		Segment 6 (500 ft)		Segment 21 (500 ft)		Segment 26 (500 ft)		Forested Wetland
	Rivers & Streams		Segment 3 (500 ft)		Segment 16 (500 & 1,000 ft)		Segment 22 (500 ft)		Parcels		Pond
	Architectural Districts		Segment 4 (500 ft)		Segment 19 (500 ft)		Segment 24 (500 ft)		Municipal Boundary		Riverine
	Segment 1 (500 ft)		Segment 5 (500 ft)		Segment 20 (500 ft)		Segment 25 (500 ft)		Freshwater Wetland		



**Preliminary &
 Subject to Change**

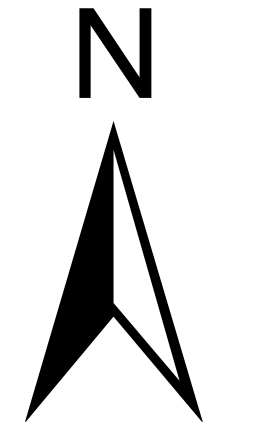


Southwest Quadrant

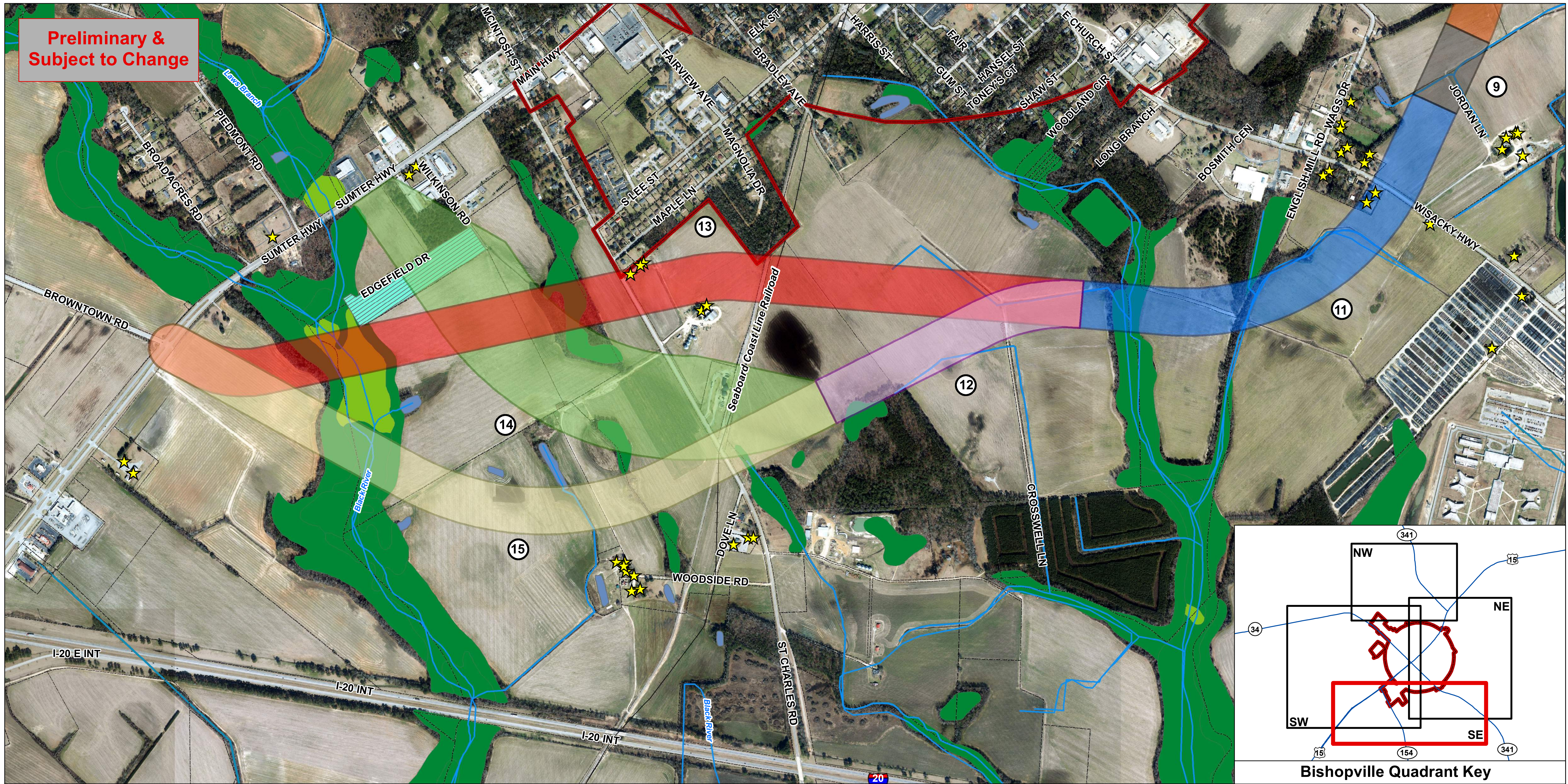


June 2018

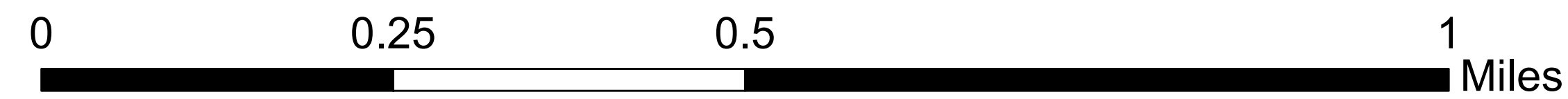
★	Architectural Resources		Architectural Districts		Segment 19 (500 ft)		Freshwater Wetland		Pond
	Rivers & Streams		Segment 16 (500 & 1,000 ft)		Parcels		Forested Wetland		Riverine
	Railroad		Segment 17 (500 ft)		Municipal Boundary				



**Preliminary &
 Subject to Change**



Southeast Quadrant



June 2018

★	Architectural Resources		Segment 8 (500 ft)		Segment 12 (500 ft)		Segment 15 (500 ft)		Freshwater Wetland
	Rivers & Streams		Segment 9 (500 ft)		Segment 13 (500 ft)		Parcels		Forested Wetland
	Railroad		Segment 11 (500 ft)		Segment 14 (1,100 ft)		Municipal Boundary		Pond
	Architectural Districts								Riverine

