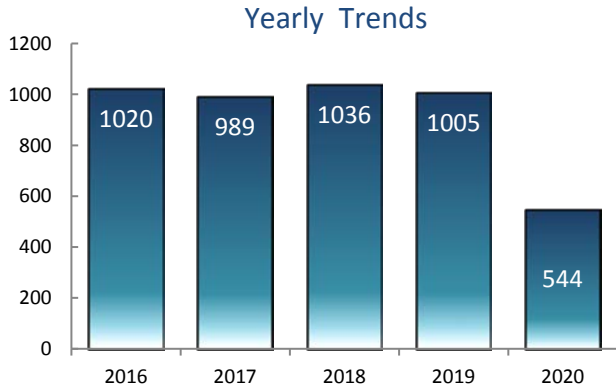


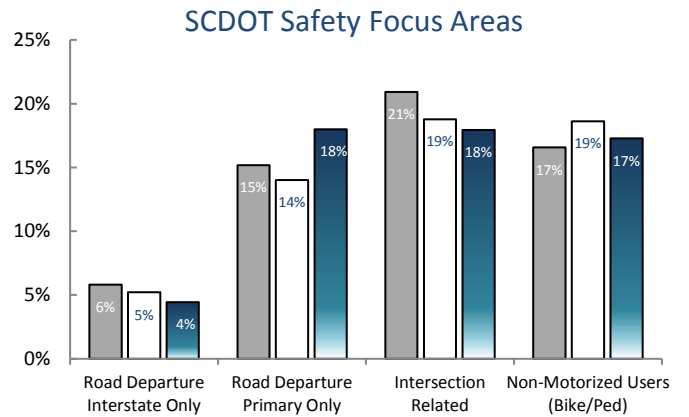
SOUTH CAROLINA TRAFFIC FATALITY REPORT FOR 2020

Statistics through July 2020

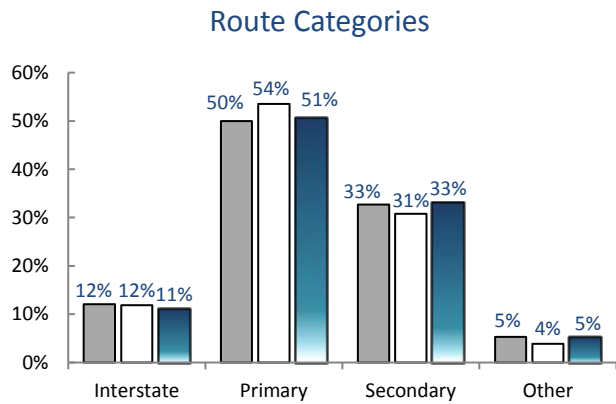
(All 2020 data is preliminary)



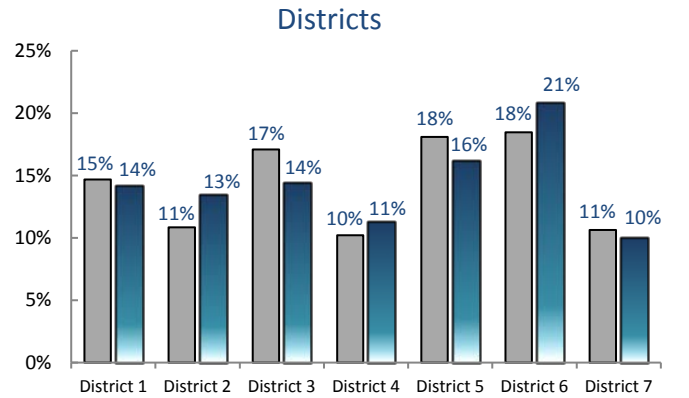
Through July there are currently 544 fatalities reported in 2020.



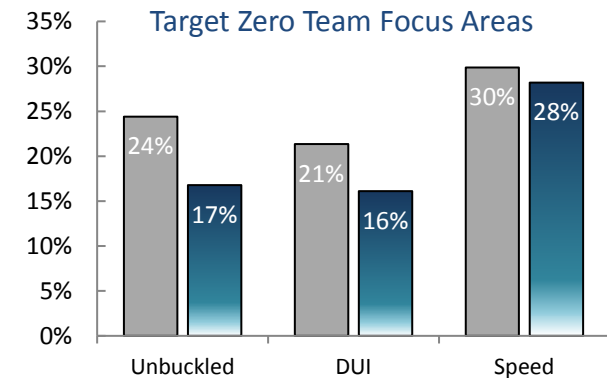
SCDOT currently directs safety funding to target fatal crashes within these specific focus areas. The above chart measures the progress within each category.



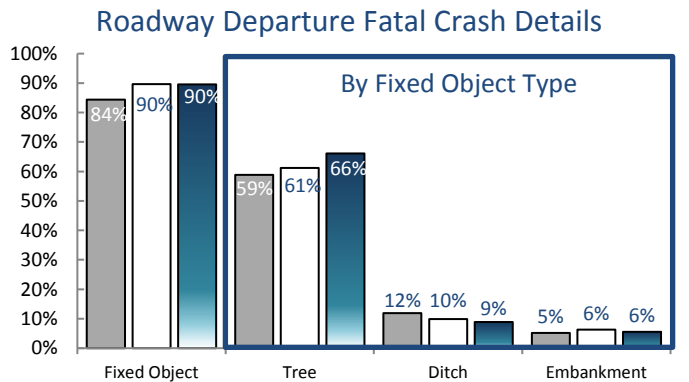
SCDOT's Rural Road Safety Program (RRSP) is targeting improvements on more than 1300 miles of primary routes. Since 2018, more than 200 miles of primary roads were improved through the RRSP.



Every county has a reported traffic fatality in 2020.



SCDOT continues to partner with SCDPS to fund the state's Target Zero Team - 24 experienced troopers working exclusively on 16 high fatality corridors across the state.



90% of all road departure fatal crashes in 2020 involve hitting a fixed object. Trees, by far, are the most common fixed object involved in fatal crashes in SC.

■ 5 Year Average □ Previous Year ■ Current Year