



YOUNG DRIVERS FACTSHEET

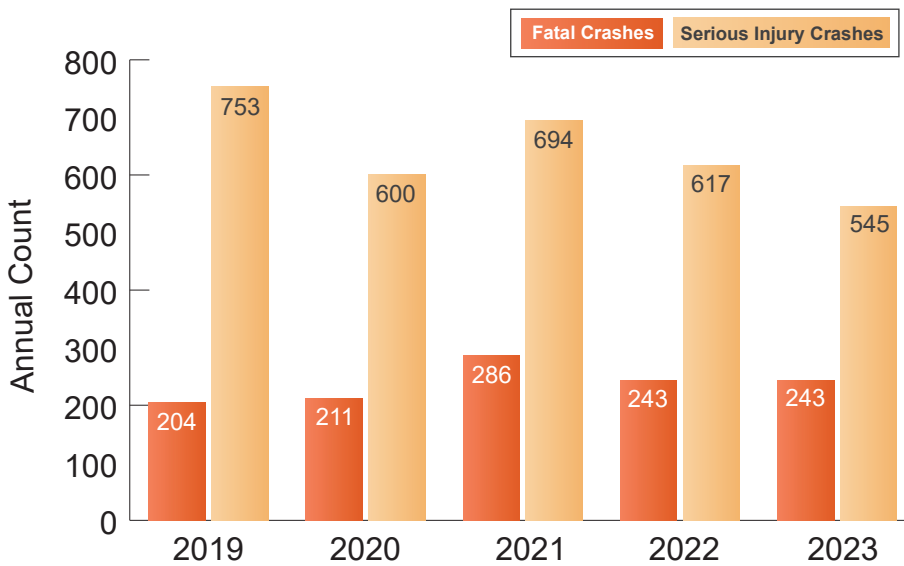
F&SI Crashes = Fatal and Serious Injury Crashes

WHAT IS THE SHSP?

South Carolina's 2025-2029 SHSP is a statewide, comprehensive safety plan that provides guidance for all statewide transportation safety professionals to coordinate efforts toward a common goal of reducing traffic-related fatalities and serious injuries on South Carolina roadways. The SHSP includes information on ongoing state and national safety programs and highlights achievements of SCDOT and SCDPS to improve roadway safety. Thirteen emphasis areas have been identified as the primary focus of the 2025-2029 SHSP, including Young Drivers.

YOUNG DRIVERS OVERVIEW

South Carolina's transportation system is intended to be easily navigable by all users, including young drivers who are newer to the driving responsibility. Young drivers include all drivers between 15 and 24 who may have recently acquired their first driver's license or beginner's permit. **Between 2019 and 2023, almost 24% of all fatal crashes and more than 28% of all serious injury crashes in South Carolina involved young drivers.** An average of 874 crashes per year involving young drivers resulted in a fatality or serious injury. Protecting the roadway's newest users from serious injury or death can be achieved by understanding the responsibilities of safely driving and navigating the roadways.



Between 2019 and 2023, an average of 642 serious injury and 237 fatal young driver crashes occurred each year. Over this time period, fatal crashes have increased while serious injury crashes have decreased.



Young Driver F&SI crashes most commonly occur with the following four emphasis areas: Lane Departure (46.2%), Speeding (38.2%), Intersection (31.6%), and Unrestrained (29.6%).



YOUNG DRIVERS FACTSHEET

Crash Statistics (2019–2023)

- Annual average: 237 fatal and 642 serious injury young-driver crashes
- Fatal crashes have increased, while serious injury crashes have decreased over this period
- Drivers ages 15–24 accounted for approximately 13% of licensed drivers in 2022, yet were involved in nearly 34% of all crashes
- Top Contributing Factors:
 - » Driving Too Fast for Conditions (24.4%)
 - » Failure to Yield (20.1%)
 - » Under the Influence (13.1%)
 - » Wrong Side/Wrong Way (6.6%)
 - » Disregarded Signs/Signals (6.5%)

POTENTIAL STRATEGIES

Alive at 25[®]
High School Parking Pass

REGISTER TODAY!
Course Fee: \$45
Duration: 4 Hours
Visit SCNSC.ORG to select High School Trainings to sign up for upcoming course.

Participants must be online and pay for class in advance, up quickly, at least 2 weeks in advance.

Students must complete the course to receive a certificate and copy to their insurance. Be sure to purchase a Plus, be sure to your insurance ask if you will discount on.

Since 2007, Alive at 25 has reached more than 250,000 students across South Carolina, and the teen traffic fatality rate has decreased by almost 50% since the program launched.

Register for a course at SCNSC.ORG/A25. Contact SCNSC at (800) 733-6185 or email INFO@SCNSC.ORG for questions.

hsc
National Safety Council
SOUTHEASTERN CHAPTER
SCNSC.ORG

Education

Graduated Driver's License Program
The graduated driver's license program allows people 15 to 17 years old the opportunity to develop their driving skills. This program restricts nighttime and unsupervised driving at first, but these restrictions are lifted over time.

If you're 15 or 16 and applying for your first driver's license, you must complete the Certification of DL Under 18 (SCDMV Form PDIA) and all of the following must be true:

- You have held your beginner's permit for more than 180 days.
- You completed a driver's education course (8 hrs in the classroom and 6 hrs driving), attendance.
- You are enrolled in school (not suspended or expelled), and you have satisfactory (SCDMV Form 447-CM) for at least 40 hrs, including 10 hrs of night driving.
- You have practiced driving with a licensed individual listed on the Consent for Minor Form PDIA) from your driver's education program since you successfully complete the course.

You will receive the Certification of School attendance, Driver's Education and Driving Practice (SCDMV Form PDIA) from your driver's education program once you successfully complete the course.

KEY TAKEAWAYS

- Young drivers are overrepresented in severe crashes, accounting for a disproportionately high share of fatal and serious injury crashes statewide
- Nighttime driving poses elevated risk for inexperienced drivers, with half of F&SI crashes occurring after dark
- Speeding is the leading contributing factor, involved in nearly 25% of young-driver F&SI crashes
- Weekend travel patterns align with higher crash severity, particularly for teen and young adult drivers
- 50% of young-driver F&SI crashes occurred at night, despite curfew and licensing restrictions
- 50% of young-driver F&SI crashes occurred on Friday, Saturday, or Sunday, highlighting weekend risk
- Alcohol remains a factor despite zero-tolerance laws, contributing to 13% of young-driver F&SI crashes