



# SPEEDING FACTSHEET

F&SI Crashes = Fatal and Serious Injury Crashes

## WHAT IS THE SHSP?

South Carolina's 2025-2029 SHSP is a statewide, comprehensive safety plan that provides guidance for all statewide transportation safety professionals to coordinate efforts toward a common goal of reducing traffic-related fatalities and serious injuries on South Carolina roadways. The SHSP includes information on ongoing state and national safety programs and highlights achievements of SCDOT and SCDPS to improve roadway safety. Thirteen emphasis areas have been identified as the primary focus of the 2025-2029 SHSP, including Speeding.

## SPEEDING OVERVIEW

South Carolina's roadways are designed for all drivers to operate at a comfortable travel speed to reach their destination while remaining safe with the existing roadway conditions. Speeding is defined as exceeding the authorized speed limit. When drivers exceed the posted speed limit, they present a danger for themselves and all other users sharing the roadway. **More than 42% of all fatal crashes and 30% of all serious injury crashes in South Carolina are related to speeding.** High speeds increase both the frequency and severity of crashes.

### Most Harmful Occurrences in Speeding Crashes



**TREE**  
(30%)

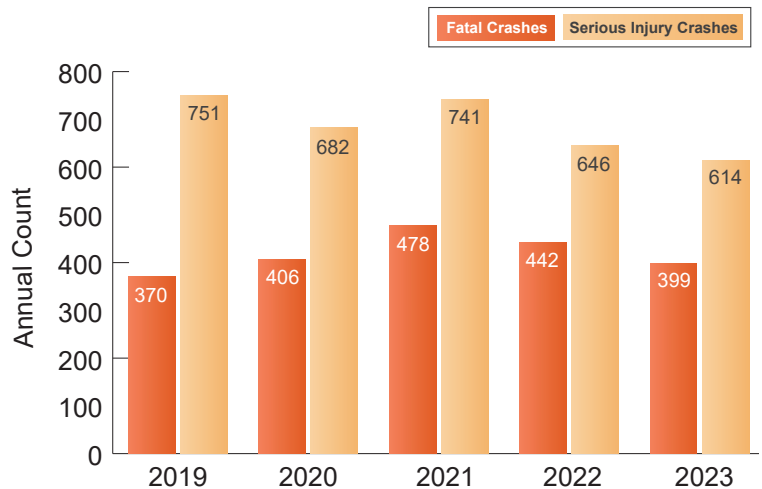
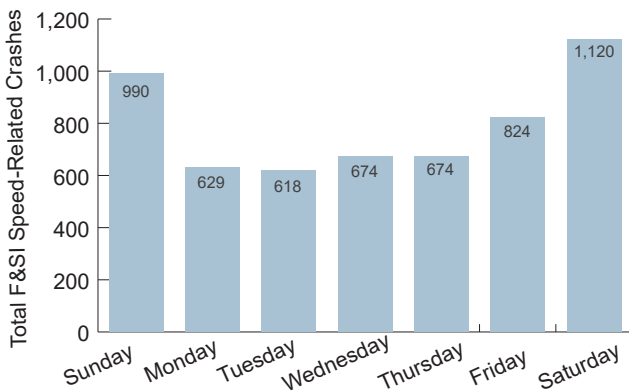


**OTHER VEHICLE(S)**  
(13%)



**DITCH**  
(9%)

Between 2019 and 2023, an average of 687 serious injury and 419 fatal speed-related crashes occurred each year. Over this time period, serious injury crashes have been declining, while fatal crashes have fluctuated, peaking in 2021.





# SPEEDING FACTSHEET



Speed-related F&SI crashes most commonly occur with the following four emphasis areas: Lane Departure (65.9%), Unrestrained (38.7%), Young Drivers (30.4%), and Impaired Users (24.9%).

## Crash Statistics (2019–2023)

- Annual average: 419 fatal and 687 serious injury speed-related crashes
- Serious injury crashes have declined over this period, while fatal crashes have fluctuated
- 56% of speed-related F&SI crashes occurred at night
- 61% of these crashes occurred on two-lane roads, with 38% on secondary roads, indicating higher speeds on lower-volume routes
- More than half of speed-related F&SI crashes occur between Friday and Sunday
- Top Contributing Factors:
  - » Under the Influence (24.9%)
  - » Aggressive Operation (7.8%)
  - » Failure to Yield (5.3%)
  - » Wrong Side/Wrong Way (4.1%)
  - » Disregarded Signs/Signals (4.0%)

## POTENTIAL STRATEGIES



Enforcement

## KEY TAKEAWAYS

- Nighttime speeding contributes to more than half of speed-related F&SI crashes
- Nearly one-quarter of speeding crashes involve alcohol impairment
- Speeding reduces the effectiveness of vehicle protections such as seat belts and airbags
- Weekend travel patterns align with higher-risk speeding behavior