



# LANE DEPARTURE FACTSHEET

F&SI Crashes = Fatal and Serious Injury Crashes

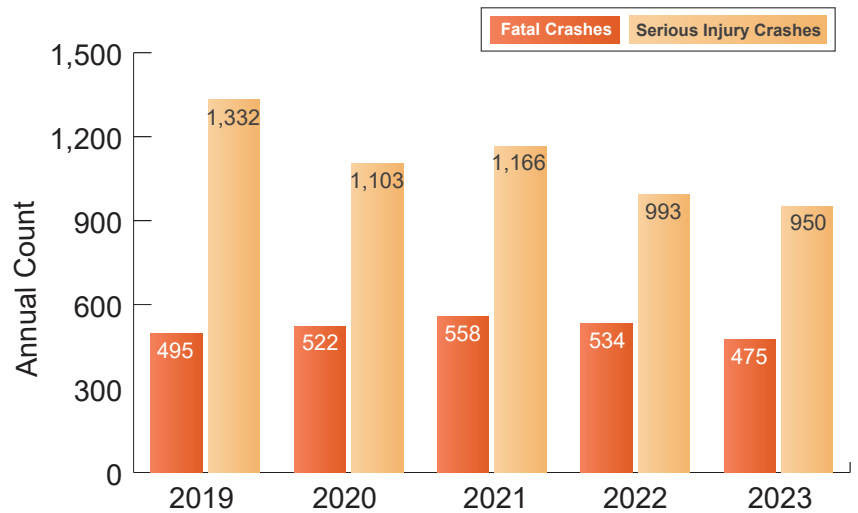
## WHAT IS THE SHSP?

South Carolina's 2025-2029 SHSP is a statewide, comprehensive safety plan that provides guidance for all statewide transportation safety professionals to coordinate efforts toward a common goal of reducing traffic-related fatalities and serious injuries on South Carolina roadways. The SHSP includes information on ongoing state and national safety programs and highlights achievements of SCDOT and SCDPS to improve roadway safety. Thirteen emphasis areas have been identified as the primary focus of the 2025-2029 SHSP, including Lane Departure.

## LANE DEPARTURE OVERVIEW

Lane Departure crashes in South Carolina are widespread and severe. These crashes include situations in which vehicles exit the lane and enter oncoming traffic and situations in which vehicles depart the roadway. These were the deadliest crashes in South Carolina over the past five years. **More than 52% of all fatal crashes and 48% of all serious injury crashes in South Carolina are attributed to lane departures.** These crashes—often influenced by driver behavior—are exacerbated by hazardous roadsides, wet, or dry conditions.

Between 2019 and 2023, an average of 1,109 serious injury and 517 fatal lane departure crashes occurred each year. F&SI declined from 2019 to 2023.



Lane Departure F&SI crashes most commonly occur with the following four emphasis areas: Speeding (44.8%), Unrestrained (38.1%), Young Drivers (25.0%), and Intersections (13.2%).

## Most Harmful Occurrences in Lane Departure Crashes



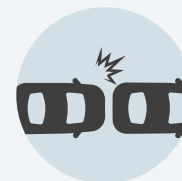
**TREE**  
(35%)



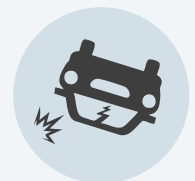
**DITCH**  
(11.9%)



**CROSS MEDIAN**  
(10.1%)



**OTHER VEHICLE(S)**  
(6.6%)



**ROLLOVER**  
(4.6%)



# LANE DEPARTURE FACTSHEET

## Crash Statistics (2019–2023)

- 52% of all fatal crashes in South Carolina involved lane departure
- 48% of all serious injury crashes involved lane departure
- Annual average: 517 fatal and 1,109 serious injury lane departure crashes
- 66% of fatal lane departure crashes occurred on rural roads
- 70% lane departure fatal and serious injury crashes occurred on two-lane roadways
- 57% of fatal lane departure crashes occurred at night, with the most severe injuries occurring between 9 to 10 p.m.
- Top Contributing Factors:
  - » Driving Too Fast for Conditions (34.2%)
  - » Under the Influence (24.5%)
  - » Wrong Side/Wrong Way (8.7%)
  - » Aggressive Operation (3.8%)
  - » Medical Related (3.8%)

## POTENTIAL STRATEGIES



## KEY TAKEAWAYS

- Lane Departure is the leading cause of roadway deaths in South Carolina
- F&SI crashes are heavily concentrated on rural, two-lane roads primarily at night
- Speeding, impairment, and nighttime conditions strongly influence severity
- Infrastructure improvements (rumble strips, signage, high friction surface treatment, lighting) show high effectiveness statewide
- South Carolina’s Rural Road Safety Program (RRSP) demonstrates proven benefit, with an approximate 55% reduction in targeted crashes on treated roads
- Multi-agency coordination is essential