



INTERSECTIONS FACTSHEET

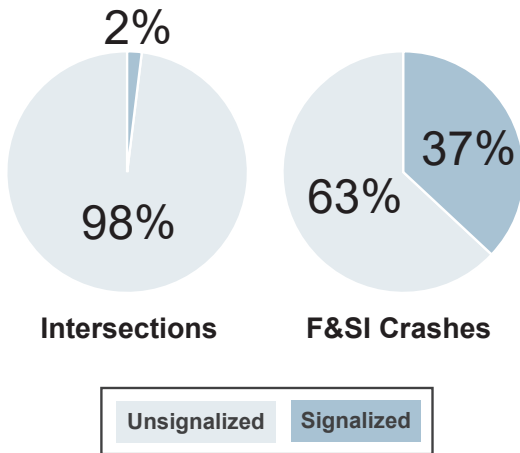
F&SI Crashes = Fatal and Serious Injury Crashes

WHAT IS THE SHSP?

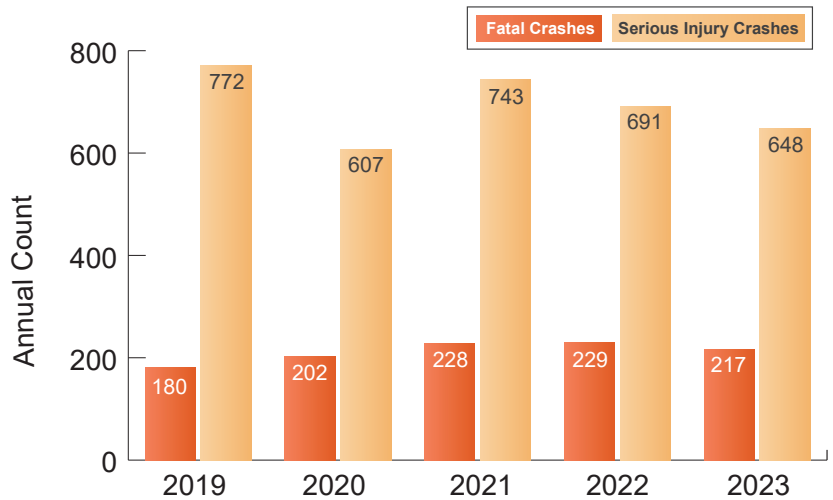
South Carolina's 2025-2029 SHSP is a statewide, comprehensive safety plan that provides guidance for all statewide transportation safety professionals to coordinate efforts toward a common goal of reducing traffic-related fatalities and serious injuries on South Carolina roadways. The SHSP includes information on ongoing state and national safety programs and highlights achievements of SCDOT and SCDPS to improve roadway safety. Thirteen emphasis areas have been identified as the primary focus of the 2025-2029 SHSP, including Intersections.

INTERSECTIONS OVERVIEW

Intersection crashes include any crashes relating to signalized and unsignalized intersections, including crashes involving pedestrians, bicyclists, and motorized vehicle operators at intersections. **More than 21% of all fatal crashes and 30% of all serious injury crashes in South Carolina were intersection-related.** In 2023, 4,494 total intersection crashes occurred, with nearly 20% of those crashes resulting in a serious injury or fatality.



Between 2019 and 2023, an average of 692 serious injury and 211 fatal intersection-related crashes occurred each year. Over this time period, serious injury crashes have declined, while fatal crashes have increased.



Signalized vs. Unsignalized Intersections

The chart above shows that 37% of F&SI crashes happen at signalized intersections, despite making up only 2% of all intersections in the state.



Intersection F&SI crashes most commonly occur with the following four emphasis areas: Young Drivers (30.8%), Older Drivers (25.5%), Speeding (25.1%), and Lane Departure (13.8%).



INTERSECTIONS FACTSHEET

Crash Statistics (2019–2023)

- Annual average: 211 fatal and 692 serious injury intersection-related crashes
- Serious injury crashes have declined, while fatal crashes have increased
- Rural risk is disproportionate: although only 28% of intersection crashes occur in rural areas, 40% of fatal intersection crashes occur there
- 41% of fatal and serious injury crashes occur at night
- 63% of F&SI crashes occur at unsignalized intersections
- Top Contributing Factors:
 - » Failure to Yield (39.4%)
 - » Disregarded Signs/Signal (18.2%)
 - » Driving Too Fast for Conditions (9.3%)
 - » Under the Influence (8.9%)
 - » Distracted/Inattention (2.9%)

POTENTIAL STRATEGIES



Engineering



Enforcement

KEY TAKEAWAYS

- Intersection-related crashes are a significant contributor to fatalities and serious injuries statewide
- Rural intersections, despite being fewer, produce a disproportionately higher share of fatal crashes
- Failure to yield and disregarded signals/signs account for more than 57% of F&SI intersection crashes
- Nighttime visibility remains a critical safety factor, with 41% of F&SI crashes occurring at night
- Signalized intersections carry significantly higher F&SI crash rates relative to their statewide share
- Intersection design improvements — such as roundabouts, reduced conflict intersections, upgraded signals, enhanced signage, and pavement markings — can reduce crash severity and frequency