



IMPAIRED USERS FACTSHEET

F&SI Crashes = Fatal and Serious Injury Crashes

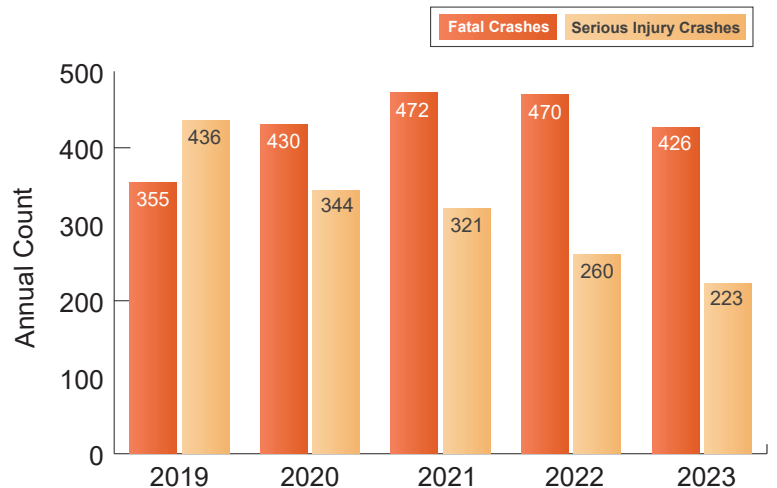
WHAT IS THE SHSP?

South Carolina's 2025-2029 SHSP is a statewide, comprehensive safety plan that provides guidance for all statewide transportation safety professionals to coordinate efforts toward a common goal of reducing traffic-related fatalities and serious injuries on South Carolina roadways. The SHSP includes information on ongoing state and national safety programs and highlights achievements of SCDOT and SCDPS to improve roadway safety. Thirteen emphasis areas have been identified as the primary focus of the 2025-2029 SHSP, including Impaired Users.

IMPAIRED USERS OVERVIEW

Impairment by alcohol or drugs is very hazardous and can cause harm beyond the individual under the influence. Law enforcement, other vehicles, and the roadway's most vulnerable users are at risk of becoming victims. Between 2019 and 2023, 1,584 crashes involving impaired users resulted in serious injury, and 2,153 crashes resulted in a fatality. **Nearly 43% of all fatal crashes and 14% of all serious injury crashes in South Carolina are related to impaired roadway users.** The Impaired Users emphasis area includes crashes involving drivers and/or non-drivers using public roadways while under the influence of drugs or alcohol.

Between 2019 and 2023, an average of 317 serious injury and 431 fatal crashes each year involved impaired users. Over this time period, serious injury crashes have declined while fatal crashes have increased.



Impaired Users F&SI crashes most commonly occur with the following four emphasis areas: Lane Departure (69.4%), Speeding (54.4%), Unrestrained (48.9%), and Young Drivers (35.3%). The overlap between impaired user crashes and lane departure crashes is significant.

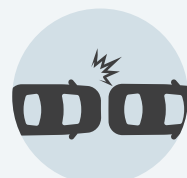
Most Harmful Occurrences in Impaired User Crashes



TREE
(27%)



PEDESTRIAN
(11%)



OTHER VEHICLE(S)
(10%)



CROSS MEDIAN/
CENTER (10%)



DITCH
(9%)



IMPAIRED USERS FACTSHEET

Crash Statistics (2019–2023)

- Annual average: 431 fatal and 317 serious injury impaired-user crashes
- Serious injury crashes have declined, while fatal crashes have increased over this period
- 62% of impaired F&SI crashes did not involve a collision with another motor vehicle, reflecting high rates of single-vehicle incidents
- Average of 1.2 deaths per day related to impaired users across the five-year period
- 56% of impaired-user crashes occurred on Friday, Saturday, or Sunday
- Top Contributing Factors:
 - » Driving Too Fast for Conditions (7.0%)
 - » Lying or Illegally in Roadway (4.5%)
 - » Failure to Yield (2.9%)
 - » Wrong Side/Wrong Way (2.7%)
 - » Excessive Speed (1.8%)

POTENTIAL STRATEGIES



KEY TAKEAWAYS

- Impaired users are involved in nearly 43% of all fatal crashes statewide, making impairment one of the largest contributors to roadway deaths in South Carolina
- Nighttime driving presents the highest risk, with almost 70% of impaired-user fatal and serious injury crashes occurring at night
- More than half (56%) of impaired-user crashes occur on Fridays, Saturdays, and Sundays, aligning with peak enforcement and prevention opportunities
- Most impaired-user crashes are single-vehicle or non-vehicle collisions, with 62% not involving another motor vehicle, increasing risk to the impaired user and vulnerable road users
- Tree impacts are the most common harmful crash event (27%), followed by pedestrians, motor-unit impacts, and cross-median collisions