



COMMERCIAL MOTOR VEHICLES FACTSHEET

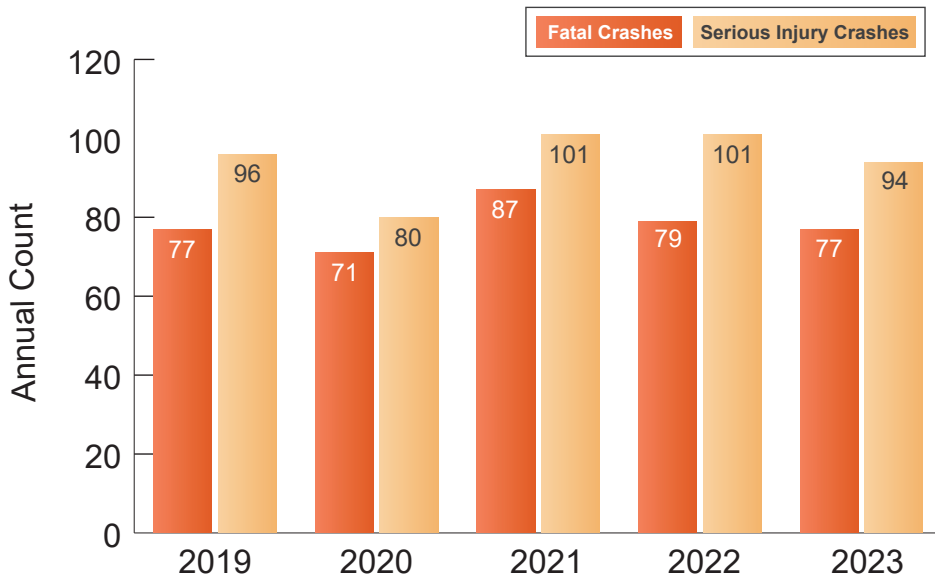
F&SI Crashes = Fatal and Serious Injury Crashes

WHAT IS THE SHSP?

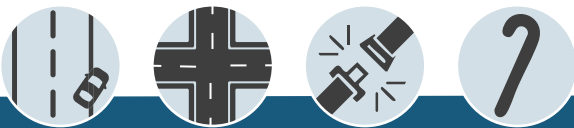
South Carolina's 2025-2029 SHSP is a statewide, comprehensive safety plan that provides guidance for all statewide transportation safety professionals to coordinate efforts toward a common goal of reducing traffic-related fatalities and serious injuries on South Carolina roadways. The SHSP includes information on ongoing state and national safety programs and highlights achievements of SCDOT and SCDPS to improve roadway safety. Thirteen emphasis areas have been identified as the primary focus of the 2025-2029 SHSP, including Commercial Motor Vehicles.

COMMERCIAL MOTOR VEHICLES OVERVIEW

South Carolina's transportation system is intended to serve all users, including commercial motor vehicle operators. Commercial motor vehicles include any vehicle that is used for a business-related purpose, such as semi-trucks, buses, and delivery trucks. For the purpose of data analysis, only tractor trailer vehicle types were considered. Between 2019 and 2023, 863 commercial motor vehicles crashes resulted in fatality or serious injury. **More than 7% of all fatal crashes and 4% of all serious injury crashes in South Carolina are commercial motor vehicle-related.**



Between 2019 and 2023, an average of 94 serious injury and 78 fatal commercial motor vehicle crashes occurred each year. During this period, serious injury crashes and fatal injury crashes have remained relatively consistent.



Commercial Motor Vehicle F&SI crashes most commonly occur with the following four emphasis areas: Lane Departure (27.5%), Intersection (27.4%), Unrestrained (24.7%), and Older Drivers (23.2%).



COMMERCIAL MOTOR VEHICLES FACTSHEET

Crash Statistics (2019–2023)

- Annual average: 78 fatal and 94 serious injury commercial-vehicle crashes
- Fatal and serious injury crash numbers have remained relatively consistent over this period
- Nearly 87% of commercial motor vehicle F&SI crashes occurred on Interstate, US, or SC routes, which carry higher travel speeds
- Weekday crashes far exceed weekend crashes, reflecting the business-driven nature of commercial-vehicle travel (147 daily on weekdays vs. 64 on weekends)
- Top Contributing Factors:
 - » Driving Too Fast for Conditions (26.7%)
 - » Failure to Yield (16.9%)
 - » Wrong Side/Wrong Way (10.1%)
 - » Under the Influence (8.7%)
 - » Disregarded Signs/Signals (6.6%)
- Crash Conditions:
 - » 85% occurred on dry pavement
 - » 80% occurred during clear weather
 - » 62% occurred during daylight

POTENTIAL STRATEGIES



KEY TAKEAWAYS

- Commercial-vehicle crashes represent a significant share of roadway fatalities and severe injuries, particularly on high-speed freight corridors
- Freight growth is expected to increase by 90% by 2050, indicating the need for continued safety measures on freight network roads
- High functional class freight routes (Interstates, US, SC routes) bear the highest burden, as these roads are designed for high travel speeds and high truck volumes
- Driver behavior is a major contributor, with speeding, failure to yield, and lane-position errors driving a substantial portion of crashes
- Counties along major freight corridors (I-85, I-26, I-77, I-95) consistently rank highest in commercial-vehicle F&SI crashes