

I-20 OVER WATEREE RIVER BRIDGE REPLACEMENT AND SWAMP OVERFLOW BRIDGE REHABILITATIONS

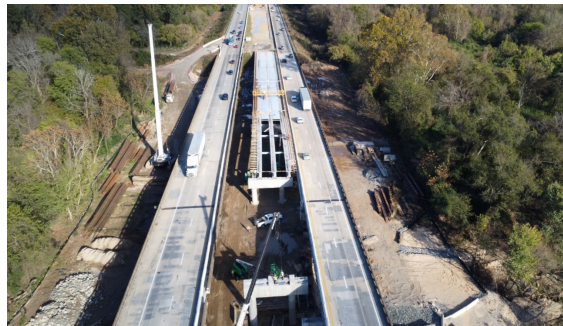
Project Update January 2025

Project Information

SCDOT is replacing the I-20 EB and WB bridges over the Wateree River along with completing any related roadway approach work along I-20 in Kershaw County near Camden, SC. The project will also rehabilitate two sets of overflow bridges to the east of the main river bridge and replace the I-20 EB pond bridge to the west of the main river bridge. The purpose of this project is to replace the existing bridge that requires significant maintenance reducing the delays caused by the frequent deck patching activities required to keep the existing bridge in operation.

Current Activities

The Contractor began work in September of 2023. Substructure work began in April 2024 to construct the new bridge which consists of 78" drill shaft foundations, 48" columns and an over 7' tall cap. Four spans of girders have been erected and the first two deck spans have been poured on the first stage of construction in December 2024. Additional crews have remained focused on completing the required rehabilitation efforts on the two sets of overflow bridges including deck patching, joint repairs, and cap improvements.



SCDOT Project Page:

<https://www.scdot.org/inside/i-20-over-wateree-swamp-overflow.aspx>

For Project related inquiries, contact: SCDOT Construction Engineer, Santhosh Nair, PMP at NairSV@scdot.org

Project Milestones

Design:

Completed April 2024.

Permits:

Received all required permits October 2023.

Site Clearing & Grading:

Roadway embankment began in April of 2024 to accommodate the new road alignment. Asphalt base was installed on the temporary roadway alignments leading to the new bridge in November 2024.

Overflow Bridge Rehab:

Rehabilitation of the two sets of overflow bridges began in December of 2023 and continues into 2025.

Bridge Construction:

Construction of bridge bents began in April 2024. First girders for the new bridge were erected in August 2024. Placement of deck concrete began in December 2024.

Wateree Bridge Completion:

All traffic on new I-20 Bridge over the Wateree River anticipated by June 2026

Completion Date:

Project Substantial Completion anticipated September 2027