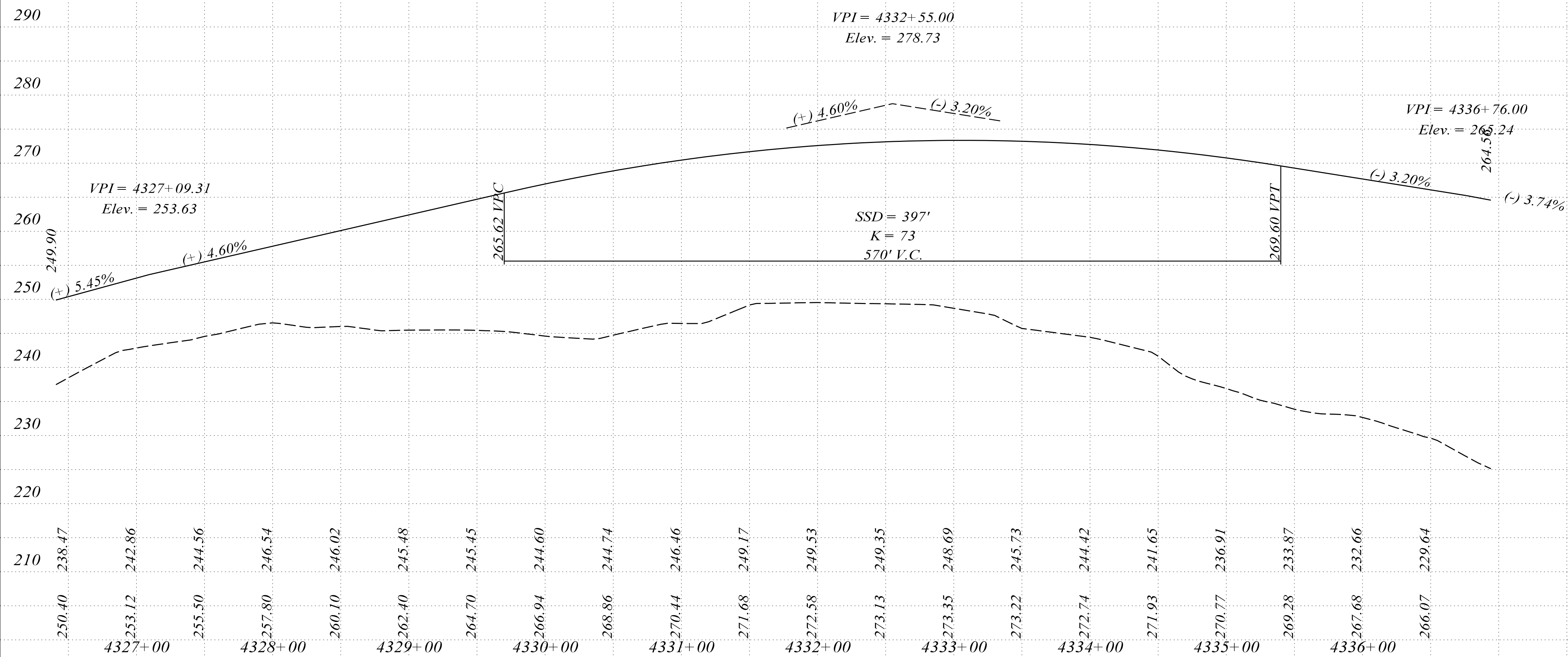
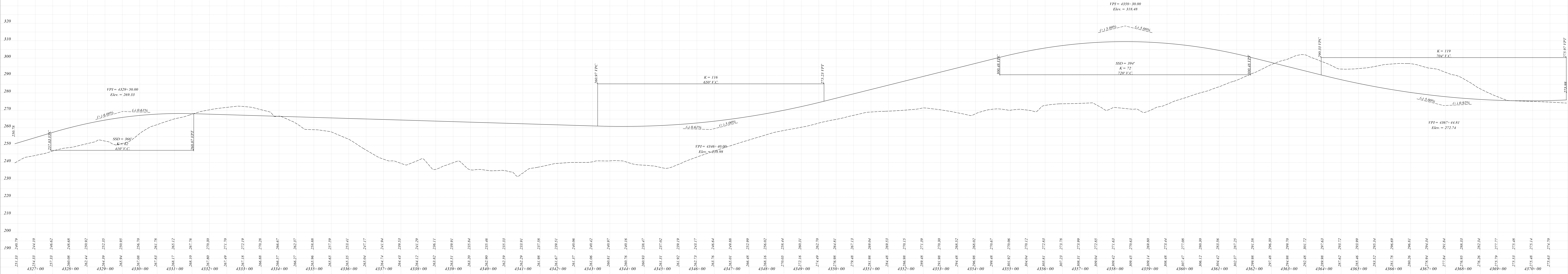
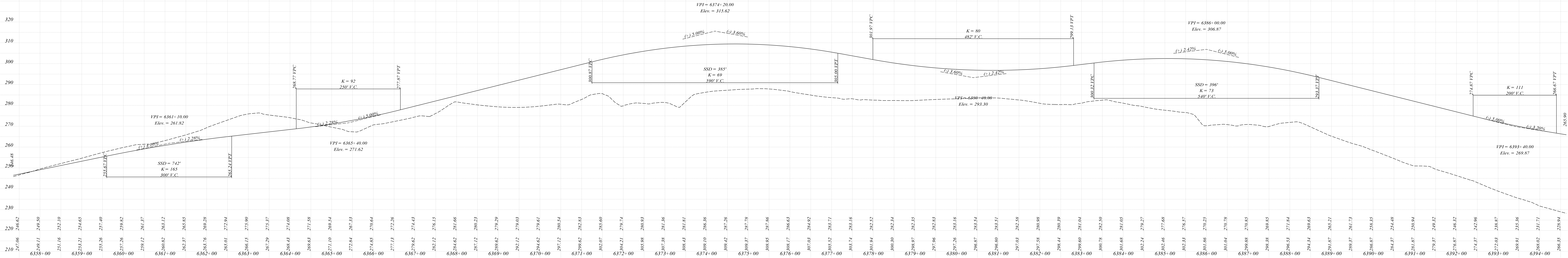


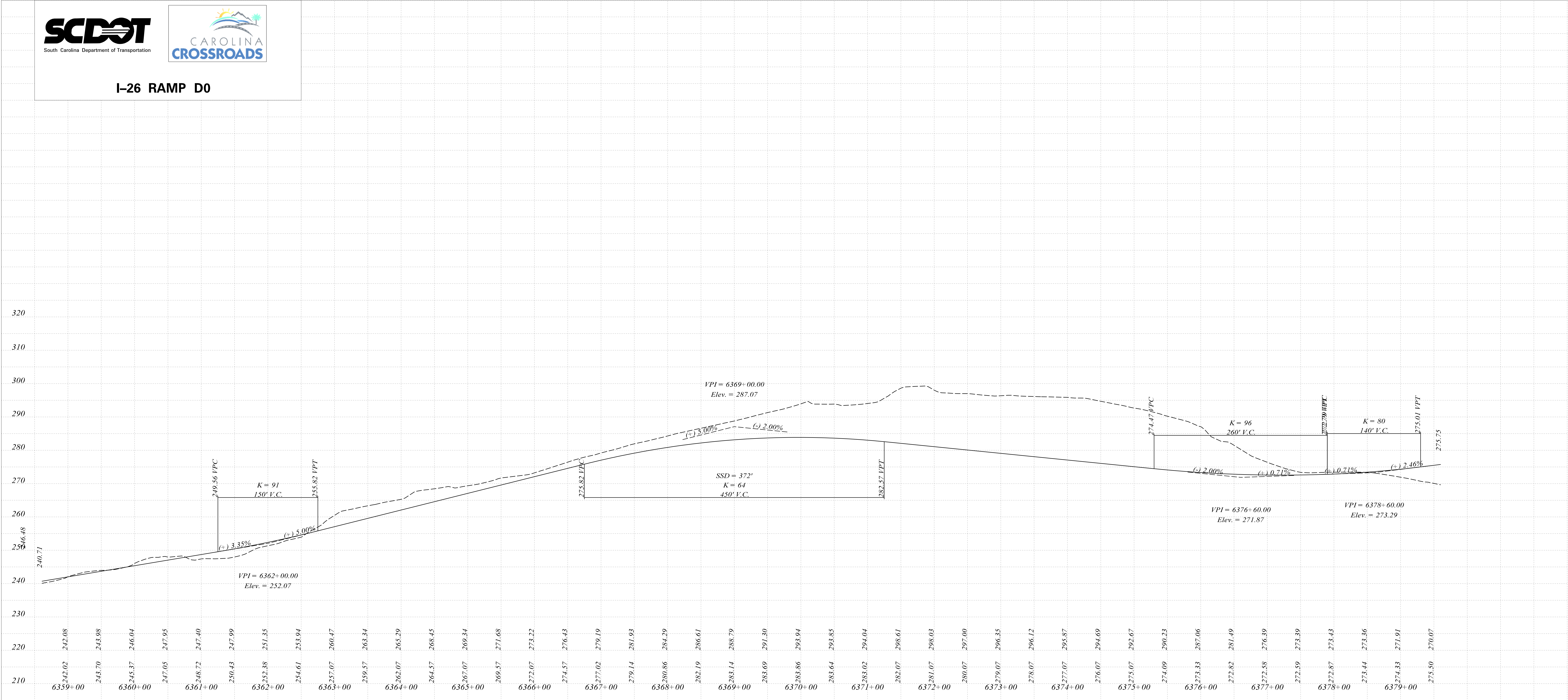
I-26 RAMP B0

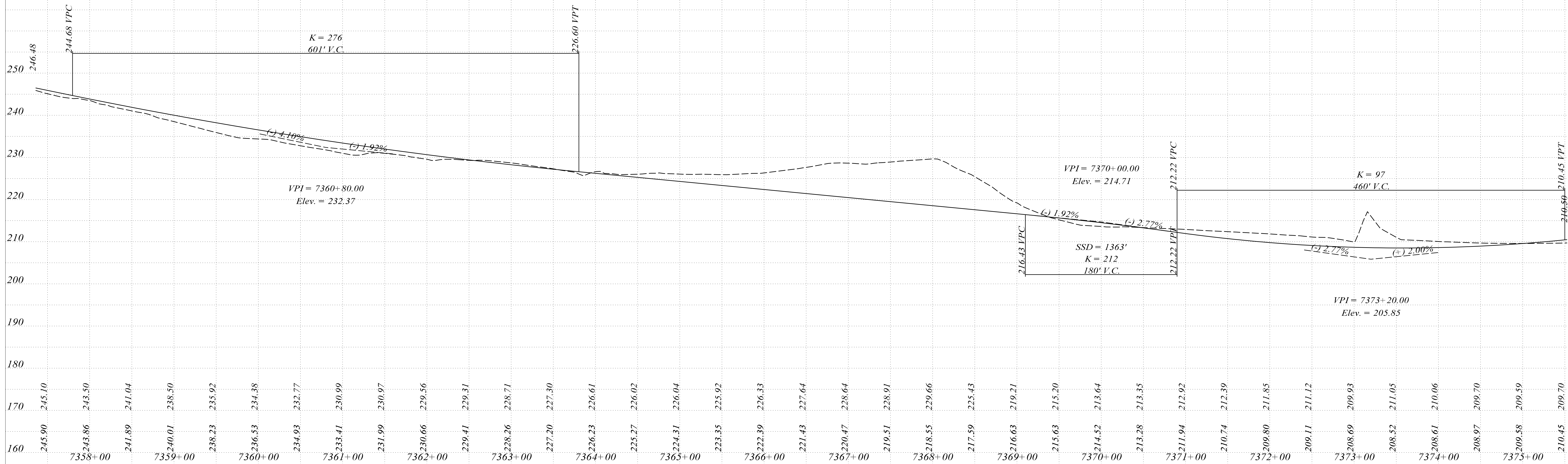


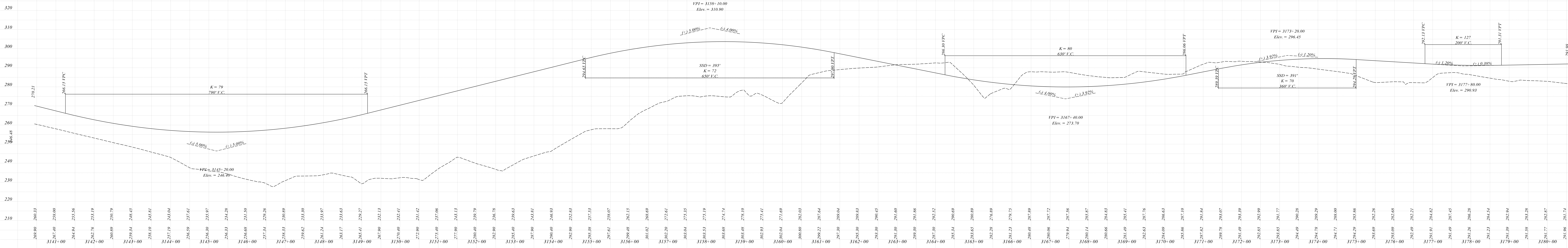
I-26 RAMP BD

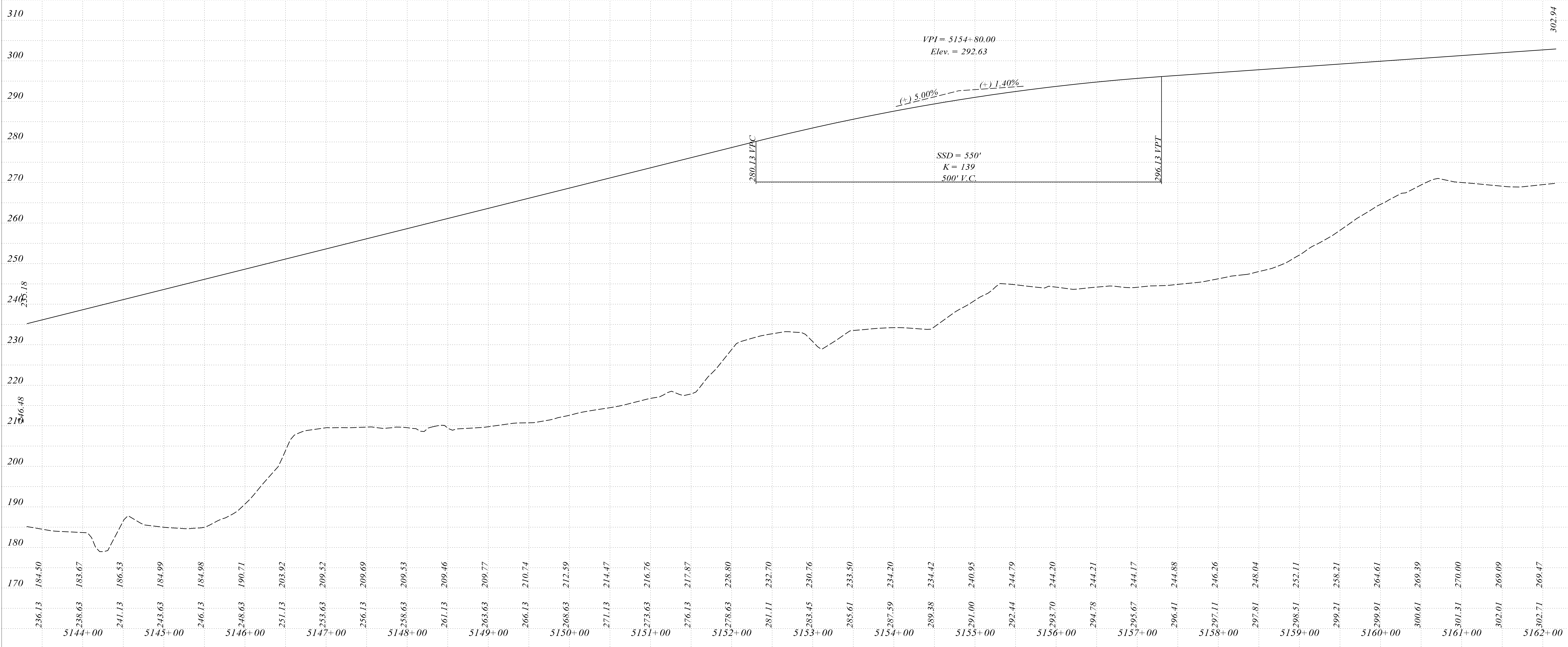










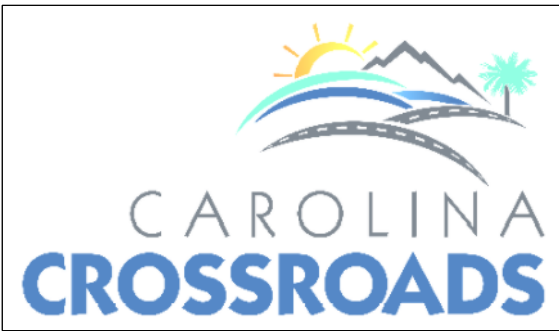


Vertical Curve Data:

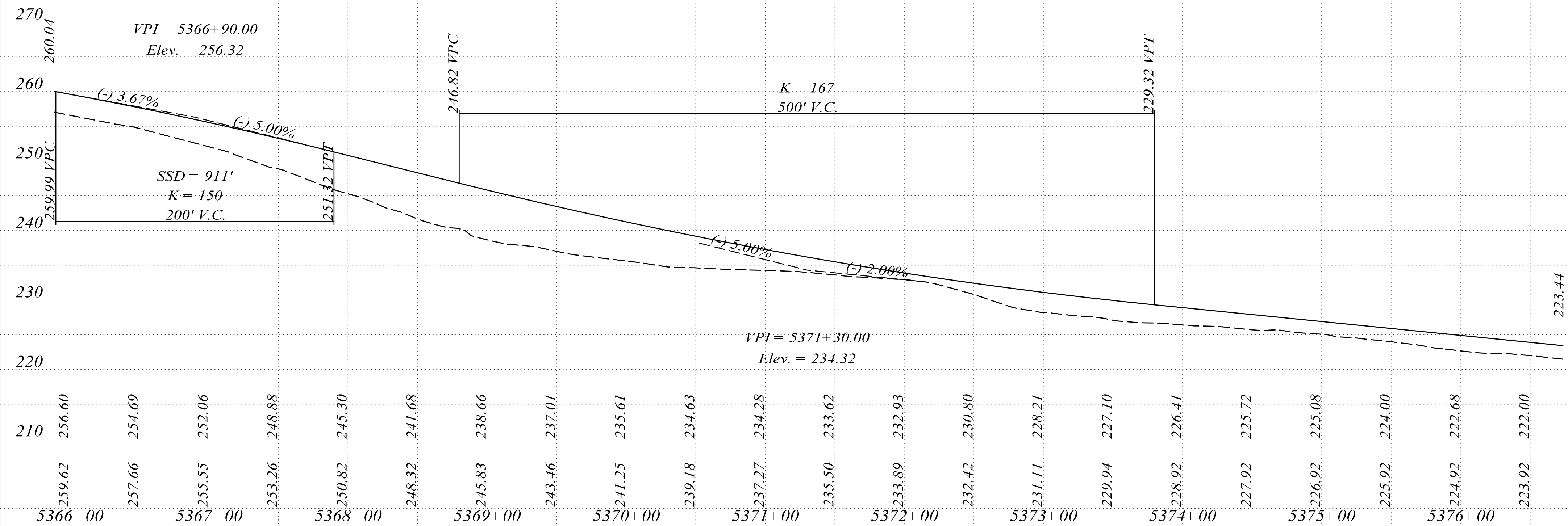
Curve	VPI	Elev.	SSD	K	Grades
1	5144+70.00	241.65	1085'	158	+4.93%, +3.85%
2	5149+20.00	258.97	571'	151	+3.85%, -0.56%
3	5154+50.00	256.01	375'	79	-0.56%, +1.19%
4	5161+20.00	284.06	383'	68	+4.19%, -3.60%
5	5169+20.00	255.26	958'	159	-3.60%, -4.86%
6	5173+20.00	235.83	200'	155	-4.86%, -3.57%

Stationing and Elevation Data (from left to right):

184.45, 238.19, 183.67, 240.53, 186.00, 242.71, 184.76, 244.73, 185.00, 246.65, 194.23, 248.45, 201.69, 250.08, 205.50, 251.55, 205.49, 252.86, 202.89, 253.99, 201.87, 254.96, 205.40, 255.77, 210.01, 256.41, 216.86, 256.89, 222.17, 257.20, 225.53, 257.32, 230.50, 257.34, 224.75, 257.13, 236.05, 256.94, 240.20, 257.06, 244.35, 257.49, 248.47, 258.74, 250.90, 259.30, 252.52, 260.69, 255.77, 262.38, 253.58, 264.39, 252.84, 266.48, 253.29, 268.57, 254.79, 270.67, 257.02, 272.76, 259.01, 274.70, 260.43, 276.28, 261.91, 277.49, 267.37, 278.34, 269.74, 278.82, 271.95, 278.93, 273.59, 278.67, 274.74, 278.04, 275.44, 277.05, 275.61, 275.69, 275.97, 273.98, 275.17, 272.18, 275.91, 270.38, 269.20, 268.58, 263.73, 266.78, 259.39, 264.98, 258.27, 263.18, 258.81, 261.38, 258.02, 259.58, 257.13, 257.75, 255.22, 255.78, 255.06, 253.65, 249.58, 251.36, 247.21, 248.95, 245.94, 246.52, 241.94, 244.09, 238.31, 241.66, 236.49, 239.26, 234.77, 237.01, 232.74, 234.92, 231.62, 232.98, 228.72, 231.19, 229.56, 229.40, 229.63, 227.61, 228.41, 225.83, 225.05



I-20 RAMP C3





I-20 RAMP D0

