

[illegible]

A circular professional seal for Willie F. McConnell, Jr., a Licensed Professional Engineer in South Carolina. The seal features the text "SOUTH CAROLINA" at the top, "LICENSED PROFESSIONAL ENGINEER" around the inner circle, and "WILLIE F. McCONNELL, JR." around the bottom. The license number "NO. 24242" is centered in the middle.

| | | | |
|---|---------|-----|--------------------|
| 6 | | | |
| 5 | | | |
| 4 | | | |
| 3 | | | |
| 2 | | | |
| 1 | 8-17-11 | JCS | GENERAL UPDATE |
| 0 | 8-24-07 | JCS | DRAWING NO. UPDATE |
| # | DATE | CHK | DESCRIPTION |

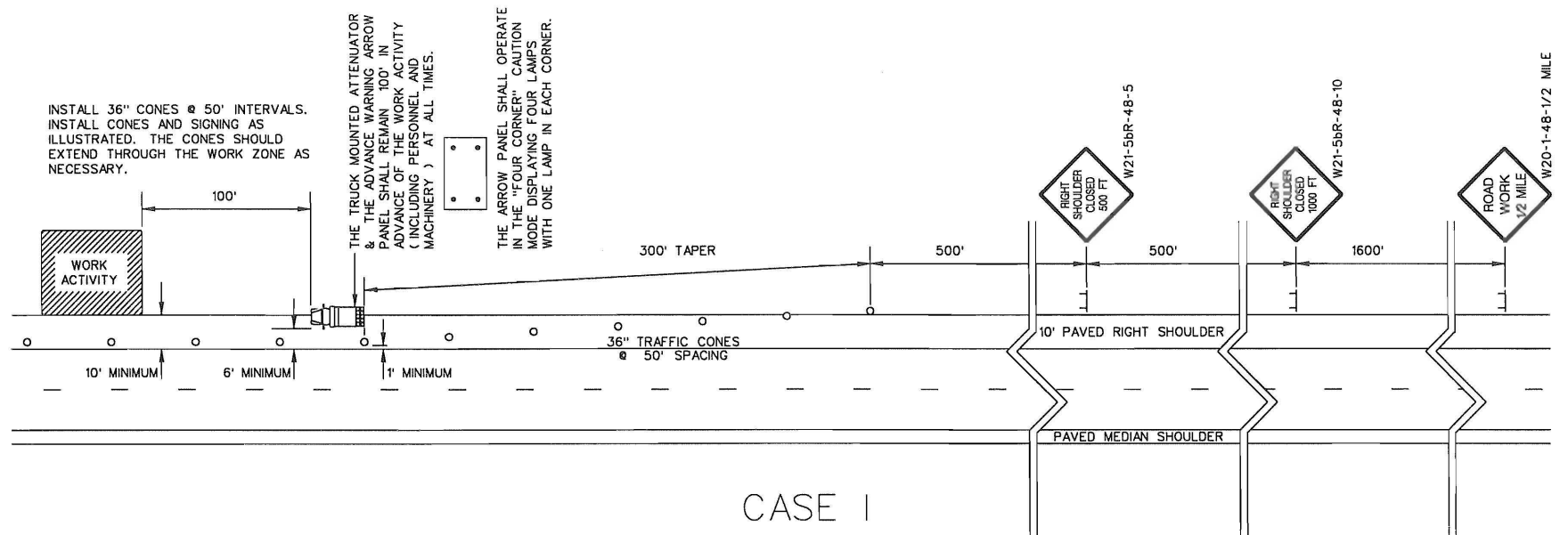
STANDARD DRAWING

| | |
|------------------------|-----------|
| 610-305-00 | |
| EFFECTIVE LETTING DATE | JAN. 2013 |

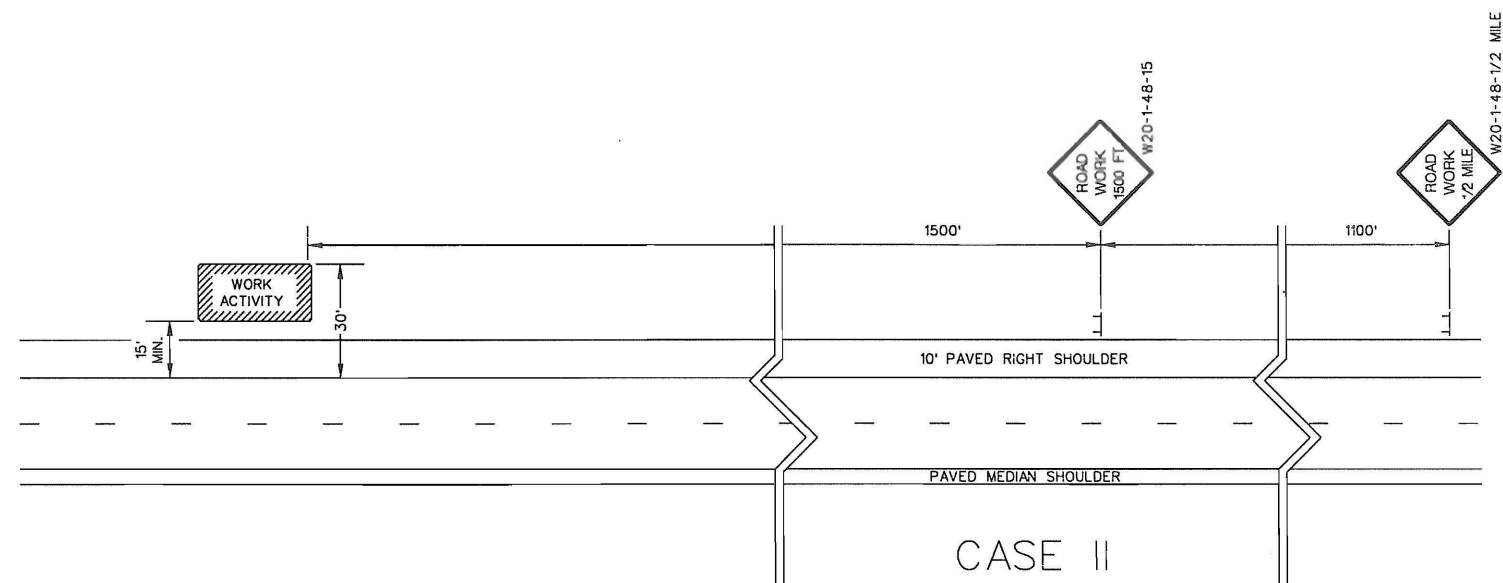
3. ALL SIGN LOCATIONS ARE TO BE MEASURED FROM THE WORK AREA. WORK LIMITS FOR THE PROJECT WILL BE DETERMINED BY THE ENGINEER AND AS INDICATED IN THE CONTRACT.
2. INSTALL ADVANCE WARNING SIGNS MOUNTED ON PORTABLE SIGN SUPPORTS NO LESS THAN 4 FEET FROM THE NEAR EDGE OF THE SIGN TO THE NEAR EDGE OF AN ADJACENT TRAVEL LANE ON ROADWAYS WITH EARTH SHOULDERS AND NO LESS THAN 6 FEET FROM THE NEAR EDGE OF THE SIGN TO THE NEAR EDGE OF AN ADJACENT TRAVEL LANE ON ROADWAYS WITH PAVED SHOULDERS. WHEN CURB & GUTTER IS PRESENT, INSTALL THE SIGN NO LESS THAN 2 FEET FROM THE NEAR EDGE OF THE SIGN TO THE FACE OF THE CURB.
3. SPACINGS INDICATED ARE FOR NORMAL CONDITIONS; ADJUSTMENTS MAY BE REQUIRED DUE TO HORIZONTAL AND/OR VERTICAL ALIGNMENTS OR OTHER SIGHT DISTANCE RESTRICTIONS.
4. ALL SIGNS MOUNTED ON PORTABLE SIGN SUPPORTS SHALL HAVE A MINIMUM MOUNTING HEIGHT OF 5 FEET FROM THE GROUND TO THE BOTTOM OF THE SIGN. ALL SIGNS MOUNTED ON GROUND MOUNTED U-CHANNEL POSTS OR SQUARE STEEL TUBE POSTS SHALL HAVE A MINIMUM MOUNTING HEIGHT OF 7 FEET FROM THE GRADE ELEVATION OF THE NEAR EDGE OF THE ADJACENT TRAVEL LANE TO THE BOTTOM OF THE SIGN UNLESS OTHERWISE DIRECTED BY THE DEPARTMENT. MOUNT ALL SIGNS STRAIGHT AND LEVEL AND WITH THE FACE OF THE SIGNS PERPENDICULAR TO THE SURFACE OF THE ROADWAY.
5. REFLECTORIZE ORANGE ADVANCE WARNING SIGNS AND ANY ORANGE AREAS OF A MULTI-COLORED ADVANCE WARNING SIGN WITH A FLUORESCENT ORANGE COLORED PRISMATIC RETROREFLECTIVE SHEETING. REFLECTORIZE WHITE REGULATORY SIGNS AND ANY WHITE AREAS OF A MULTI-COLORED ADVANCE WARNING SIGN WITH A WHITE COLORED PRISMATIC RETROREFLECTIVE SHEETING.
6. ALL TRAFFIC CONTROL DEVICES SHALL COMPLY WITH ALL NCHRP REPORT 350 REQUIREMENTS AND SHALL REQUIRE APPROVAL BY THE DEPARTMENT. ONLY THOSE TRAFFIC CONTROL DEVICES INCLUDED ON THE "APPROVED PRODUCTS LIST FOR TRAFFIC CONTROL DEVICES IN WORK ZONES" ARE CONSIDERED ACCEPTABLE FOR USE. THIS LIST MAY BE ACCESSED ON THE DEPARTMENT'S WEB SITE AT: www.scdot.org.
7. THE CONTRACTOR SHALL PROVIDE AND UTILIZE ANY SPECIAL SIGN MOUNTING ASSEMBLIES AND HARDWARE THAT MAY BE NECESSARY FOR INSTALLING AND MOUNTING SIGNS IN AREAS OF CONCRETE MEDIAN BARRIER, BRIDGE PARAPET WALLS OR DOUBLEFACED GUARDRAIL.
8. THE PRIMARY TRAFFIC CONTROL DEVICES UTILIZED FOR DAYTIME SHOULDER CLOSURES ARE 36" CONES. THE PRIMARY TRAFFIC CONTROL DEVICES UTILIZED FOR NIGHTTIME SHOULDER CLOSURES ARE PORTABLE PLASTIC DRUMS. DURING DAYTIME SHOULDER CLOSURES, 42" OVERSIZED CONES MAY BE SUBSTITUTED FOR 36" CONES. DURING NIGHTTIME SHOULDER CLOSURES, 42" OVERSIZED CONES ARE PROHIBITED FOR USE. IF THIS TRAFFIC CONTROL SETUP EXTENDS INTO THE HOURS OF DARKNESS, REPLACE ALL CONES, 36" OR 42" OVERSIZED, WITH PORTABLE PLASTIC DRUMS.
9. THE 36" CONES UTILIZED DURING DAYLIGHT HOURS ARE NOT REQUIRED TO BE REFLECTORIZED. REFLECTORIZE ALL 42" OVERSIZED CONES UTILIZED DURING DAYTIME SHOULDER CLOSURES WITH TYPE III FLEXIBLE PRISMATIC RETROREFLECTIVE SHEETING UNLESS OTHERWISE DIRECTED BY THE DEPARTMENT. REFLECTORIZE ALL PORTABLE PLASTIC DRUMS WITH TYPE III FLEXIBLE PRISMATIC RETROREFLECTIVE SHEETING UNLESS OTHERWISE DIRECTED BY THE DEPARTMENT.
11. THE DEPARTMENT PROHIBITS CONDUCTING WORK WITHIN THE LIMITS OF A PAVED SHOULDER OR WITHIN 10' OF THE NEAR EDGE OF THE ADJACENT TRAVEL LANE UNDER A SHOULDER CLOSURE. ALL WORK THAT MAY REQUIRE THE PRESENCE OF EQUIPMENT, PERSONNEL, MATERIALS OR WORK VEHICLES OTHER THAN A TRUCK MOUNTED ATTENUATOR WITHIN THE LIMITS OF A PAVED SHOULDER OR WITHIN 10' OF THE NEAR EDGE OF AN ADJACENT TRAVEL LANE SHALL BE CONDUCTED UNDER A LANE CLOSURE.

CASE II: WHENEVER THE WORK IS CONDUCTED BEYOND 15' BUT WITHIN 30' OF THE NEAR EDGE OF THE ADJACENT TRAVEL LANE, INCLUDING THE PRESENCE OF EQUIPMENT, PERSONNEL, MATERIALS OR VEHICLES, INSTALL AND MAINTAIN THE SIGNING AND TRAFFIC CONTROL DEVICES AS ILLUSTRATED.

- INSTALL 36" CONES @ 50' INTERVALS.
INSTALL CONES AND SIGNING AS
ILLUSTRATED. THE CONES SHOULD
EXTEND THROUGH THE WORK ZONE AS
NECESSARY.



CASE 1



CASE II

1. UTILIZE A TRUCK MOUNTED ATTENUATOR ATTACHED TO THE REAR OF A TRUCK WITH A MINIMUM GROSS VEHICULAR WEIGHT (GVW) OF 15,000 POUNDS (ACTUAL WEIGHT). IF THE ADDITION OF SUPPLEMENTAL WEIGHT TO THE VEHICLE AS BALLAST IS NECESSARY, CONTAIN THE MATERIAL WITHIN A STRUCTURE CONSTRUCTED OF STEEL. CONSTRUCT THIS STEEL STRUCTURE TO HAVE A MINIMUM OF FOUR SIDES AND A BOTTOM. A TOP IS OPTIONAL. BOLT THIS STRUCTURE TO THE FRAME OF THE TRUCK. UTILIZE A SUFFICIENT NUMBER OF FASTENERS FOR ATTACHMENT OF THE STEEL STRUCTURE TO THE FRAME OF THE TRUCK TO ENSURE THE STRUCTURE WILL NOT SEPARATE FROM THE FRAME OF THE TRUCK DURING AN IMPACT UPON THE ATTACHED TRUCK MOUNTED ATTENUATOR. UTILIZE EITHER DRY LOOSE SAND OR STEEL REINFORCED CONCRETE FOR BALLAST MATERIAL WITHIN THE STEEL STRUCTURE TO ACHIEVE THE NECESSARY WEIGHT. THE BALLAST MATERIAL SHALL REMAIN CONTAINED WITHIN THE CONFINES OF THE STEEL STRUCTURE AND SHALL NOT PROTRUDE FROM THE STEEL STRUCTURE IN ANY MANNER.
2. LOCATE THE TRUCK MOUNTED ATTENUATOR 100 FEET IN ADVANCE OF THE WORK AREA UNLESS OTHERWISE SPECIFIED.
3. PROVIDE, INSTALL AND MAINTAIN THE TRUCK MOUNTED ATTENUATOR AS SPECIFIED BY THE STANDARD SPECIFICATIONS AND AS DIRECTED BY THE ENGINEER.

ALL ADVANCE WARNING ARROW PANELS SHALL BE 48" x 96" WITH A MINIMUM LEGIBILITY DISTANCE OF 1 MILE. PLACEMENT OF AN ADVANCE WARNING ARROW PANEL MAY REQUIRE ADJUSTMENTS DUE TO HORIZONTAL AND/OR VERTICAL ALIGNMENT OR OTHER SIGHT DISTANCE RESTRICTIONS. THE PANEL FACE SHALL BE NONREFLECTIVE BLACK. ALL ADVANCE WARNING ARROW PANELS SHALL COMPLY WITH THE STANDARD SPECIFICATIONS FOR HIGHWAY CONSTRUCTION, LATEST EDITION.

WHEN AN ADVANCE WARNING ARROW PANEL IS REQUIRED TO OPERATE IN THE CAUTION MODE, THE ADVANCE WARNING ARROW PANEL SHALL DISPLAY THE "FOUR CORNERS" CAUTION MODE, WITH ONE LAMP IN EACH CORNER. DISPLAY OF ANY OTHER TYPE OF CAUTION MODE OTHER THAN THE "FOUR CORNERS" CAUTION MODE SUCH AS THE "FLASHING BAR" OR THE "ALTERNATING DIAMOND" CAUTION MODES ARE UNACCEPTABLE AND PROHIBITED.

- 36" TRAFFIC CONES