

## APPENDIX A: FIGURES

Site Vicinity Map

Approximate Construction Footprint and Identified Contamination

Phase II Soil Test Boring Location Plan



**SITE VICINITY MAP**

I-85 REHABILITATION PROJECT MM 77.0 TO MM 84.0  
 SPARTANBURG COUNTY, SOUTH CAROLINA

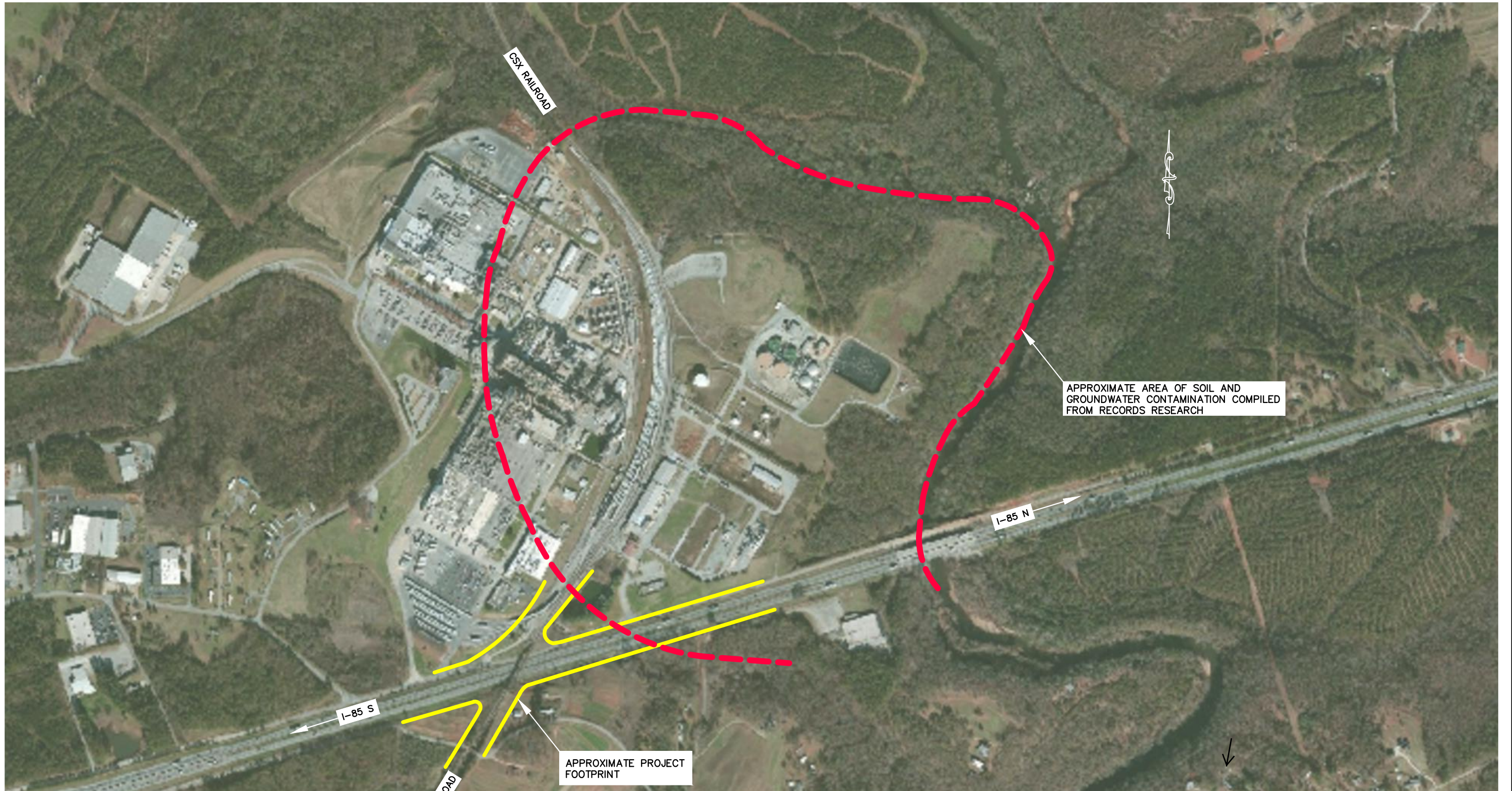


3112 Devine Street, Columbia, SC 29205  
 P 803.254.4540 | F 803.254.4542

IMAGE SOURCE:	Microsoft	SCALE:	NTS
PREPARED BY:	NRK	DATE:	8/3/2015
CHECKED BY:	GME	PROJECT:	G5439.00



FED. RD. DIV. NO.	STATE	COUNTY	PROJECT ID	ROAD / ROUTE NO.	SHEET NO.
3	SC	SPARTANBURG	0040692	I-85	



APPROXIMATE AREA OF SOIL AND GROUNDWATER CONTAMINATION COMPILED FROM RECORDS RESEARCH

APPROXIMATE PROJECT FOOTPRINT

**F&ME**  
CONSULTANTS  
GEOTECHNICAL – ENVIRONMENTAL – MATERIALS  
COLUMBIA, SOUTH CAROLINA

I-85 REHABILITATION MM 77 TO MM 84  
CSX RR BRIDGE OVER I-85

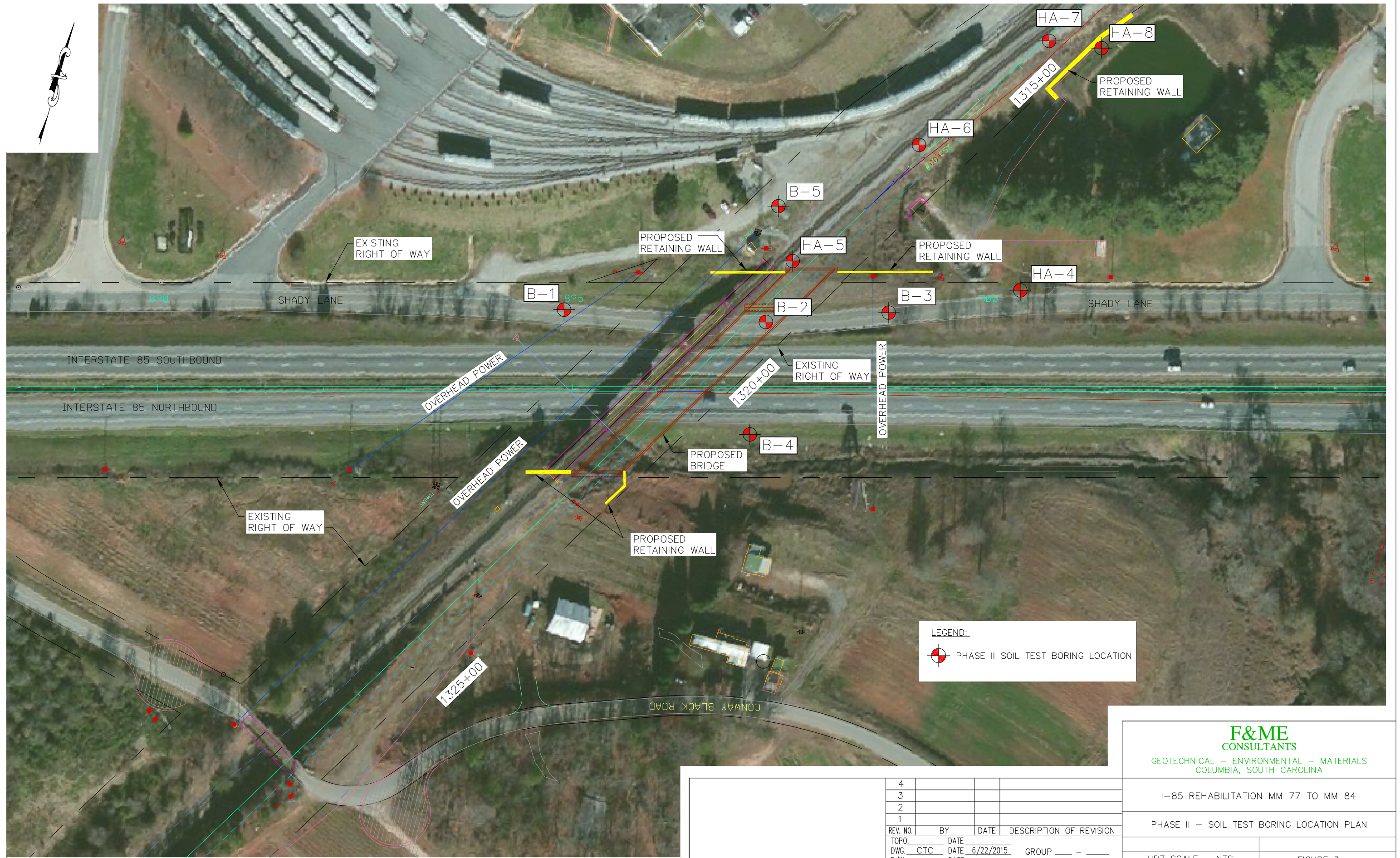
APPROXIMATE CONSTRUCTION FOOTPRINT  
AND IDENTIFIED CONTAMINATION

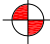
HRZ SCALE = NTS SHEET 1 OF 1

4			
3			
2			
1			
REV. NO.	BY	DATE	DESCRIPTION OF REVISION
TOPO.		DATE	
DWG. CTC		DATE 7/30/2015	GROUP
R/W		DATE	



FED. RD. DIV. NO.	STATE	COUNTY	PROJECT ID	ROAD / ROUTE NO.	SHEET NO.
3	SC	SPARTANBURG	0040692	I-85	



LEGEND:  
 PHASE II SOIL TEST BORING LOCATION

**F&ME**  
CONSULTANTS  
GEOTECHNICAL – ENVIRONMENTAL – MATERIALS  
COLUMBIA, SOUTH CAROLINA

I-85 REHABILITATION MM 77 TO MM 84

PHASE II – SOIL TEST BORING LOCATION PLAN

HRZ SCALE = NTS

FIGURE 3

4				
3				
2				
1				
REV. NO.	BY	DATE	DESCRIPTION OF REVISION	
TOPO.		DATE		
DWG.	CTC	DATE 6/22/2015	GROUP	---
R/W		DATE		



## **APPENDIX B: BORING LOGS**

Environmental Boring Logs (B-1 to B-5)

Environmental Hand Auger Boring Logs (HA-4 to HA-8)

**I-85 Rehab MM77 to MM84  
Spartanburg, SC  
G5439.00**

**LOG OF BORING No. B-1**

Station:  
Offset:

Date Drilled: 4/27/2015

Supervisor: M Touchberry

Ground Elevation (ft): 743.8

Water Level: 34.5 Feet at T.O.B.

Notes:

Geoprobe 7822 Track Rig

All Drilling Equipment Decontaminated Prior to Start of Boring.

Elevation (ft)	Depth (ft)	MATERIAL DESCRIPTION	Graphic Log	Sample Depth (ft)	Sample Type-No.	PID (ppm)	COMMENTS
	0.3	<b>ASPHALT</b> (3.5")		0.0			
	1.0	Stiff, Dry to Moist, Yellowish Red, Fine Sandy / <b>SILT (ML)</b>		2.0	SS-1	3.5	
		Stiff, Dry to Moist, Red, Fine Sandy <b>CLAY (CL)</b>		4.0	SS-2	3.0	
738.8	4.0	Stiff, Dry to Moist, Yellowish Red, Fine to Coarse Sandy <b>SILT (ML)</b> , with Gravel		6.0	SS-3	0.1	Soil Sample Collected at 4.0 to 6.0 Feet
	6.0	<b>SAPROLITE</b> Stiff to Firm, Moist to Wet, Yellowish Red, <b>SILT (ML)</b> , Micaceous, Mottled		8.0	SS-4	0.0	
733.8		=>1" Fine Quartz Gravel Seam			SS-5	0.0	
				12.5	SS-6	0.0	
728.8		=>1" Fine Quartz Gravel Seam			SS-7	0.0	
				15.0	SS-8	0.0	
				17.5	SS-9	0.0	
723.8		=>1" Fine Quartz Gravel Seam			SS-10	0.0	
				20.0			
				22.5			
				25.0			

LEGEND

Continued Next Page

SAMPLER TYPE

ABBREVIATIONS

DS - Disturbed Sample  
SS - Split Tube Sampler  
WS - Water Sample  
PT - Push Tube  
CU - Cuttings  
CT - Continuous Tube

WOH - Weight Of Hammer  
T.O.B. - Time Of Boring

**LOG OF BORING No. B-1**

**I-85 Rehab MM77 to MM84  
Spartanburg, SC  
G5439.00**

Station:  
Offset:

Date Drilled: 4/27/2015

Supervisor: M Touchberry

Ground Elevation (ft): 743.8

Water Level: 34.5 Feet at T.O.B.

**Notes:**

Geoprobe 7822 Track Rig

All Drilling Equipment Decontaminated Prior to Start of Boring.

Elevation (ft)	Depth (ft)	MATERIAL DESCRIPTION	Graphic Log	Sample Depth (ft)	Sample Type-No.	PID (ppm)	COMMENTS
713.8		=>1" Fine Quartz Gravel Seam		27.5	SS-11	0.0	
		=>Very Stiff to Hard, Olive Brown		30.0	SS-12	0.0	
		=>1" Fine Quartz Gravel Seam		32.5	SS-13	0.0	
	33.5	<b>PARTIALLY WEATHERED ROCK (PWR)</b>		35.0	SS-14	0.0	Soil Sample Collected at 32.5 to 34.0 Feet
708.8		Hard, Wet, Olive Brown, <u>SILT (ML)</u>		37.5	SS-15	0.0	Water Sample Collected 34.5 Feet at T.O.B.
		=>Dark Brown		40.0	SS-16	0.0	
703.8		=>Black		41.5	SS-17	0.0	
	42.0	Boring Terminated at 42.0 feet Due to Auger Refusal					
698.8							

**LEGEND**

**SAMPLER TYPE**

DS - Disturbed Sample  
SS - Split Tube Sampler  
WS - Water Sample  
PT - Push Tube  
CU - Cuttings  
CT - Continuous Tube

**ABBREVIATIONS**

WOH - Weight Of Hammer  
T.O.B. - Time Of Boring

**I-85 Rehab MM77 to MM84  
Spartanburg, SC  
G5439.00**

**LOG OF BORING No. B-2**

Station:  
Offset:

Date Drilled: 6/17/2015

Supervisor: M Touchberry

Ground Elevation (ft): 729.8

Water Level: 7 Feet at T.O.B.

Notes:

CME-550 ATV

All Drilling Equipment Decontaminated Prior to Start of Boring.

Elevation (ft)	Depth (ft)	MATERIAL DESCRIPTION	Graphic Log	Sample Depth (ft)	Sample Type-No.	PID (ppm)	COMMENTS	
	0.5	<b>ASPHALT (6.0")</b> Stiff, Dry to Moist, Brown/Orange, Fine to Medium Sandy <u>SILT (ML)</u>		0.0				
		=>Firm		2.0	SS-1	0.5	Soil Sample Collected at 0.5 to 2.0 Feet	
	2.5	Firm to Soft, Dry to Moist, Light Brown/Yellow, <u>SILT (ML)</u> , with Mica		4.0	SS-2	0.4		
724.8				6.0	SS-3	0.0		
				8.0	SS-4	0.0		Water Sample Collected at 7.0 Feet at T.O.B.
		=>with trace Quartz fragments			SS-5	0.3		
719.8				12.5	SS-6	0.0		
714.8	15.0	<b>PARTIALLY WEATHERED ROCK (PWR)</b>		15.0	SS-7			Soil Sample Collected at 15.0 to 16.5 Feet
	16.0	Hard, Wet, Light Brown/Red/White, Fine to Coarse Sandy <u>SILT (ML)</u> , with Quartz rock		16.0		0.5		
		Boring Terminated at 16.0 feet due to Auger Refusal						
709.8								

**LEGEND**

**SAMPLER TYPE**

DS - Disturbed Sample  
SS - Split Tube Sampler  
WS - Water Sample  
PT - Push Tube  
CU - Cuttings  
CT - Continuous Tube

**ABBREVIATIONS**

WOH - Weight Of Hammer  
T.O.B. - Time Of Boring



**I-85 Rehab MM77 to MM84  
Spartanburg, SC  
G5439.00**

**LOG OF BORING No. B-3**

Station:  
Offset:

Date Drilled: 4/28/2015

Supervisor: M Touchberry

Ground Elevation (ft): 724.7

Water Level: 9.2 Feet at T.O.B.

Notes:

Geoprobe 7822 Track Rig

All Drilling Equipment Decontaminated Prior to Start of Boring.

Elevation (ft)	Depth (ft)	MATERIAL DESCRIPTION	Graphic Log	Sample Depth (ft)	Sample Type-No.	PID (ppm)	COMMENTS
	0.3	<b>ASPHALT (3.0")</b>		0.0			Soil Sample Collected at 0.0 to 2.0 Feet
		Firm, Dry, Red, Silty <u>CLAY (CL)</u> , with Fine Sand			SS-1	36.5	
				2.0		738.8	
	3.0	Firm to Soft, Moist, Light Yellowish Brown, <u>SILT (ML)</u>		4.0	SS-2	333.0	
719.7		=>Orangish Brown		6.0	SS-3	148.6	
						97.7	
	7.5	=>1" Fine Quartz Gravel Seam		8.0	SS-4		
		<b>SAPROLITE</b>					
714.7		Firm, Moist, Reddish Brown, <u>SILT (ML)</u> , Mottled			SS-5	46.3	Water Sample Collected at 9.2 Feet at T.O.B.
				12.5			
	13.0	Very Dense, Wet, Dark Reddish Brown, Silty Fine to Coarse <u>SAND (SM)</u> , with Fine Quartz Gravel		15.0	SS-6	0.8	
709.7		=> Loose					
	16.0	Stiff, Moist, Reddish Brown, <u>SILT (ML)</u>			SS-7	2.0	
	17.5	Boring Terminated at 17.5 feet Due to Auger Refusal		17.4	SS-8		
704.7							

**LEGEND**

**SAMPLER TYPE**

DS - Disturbed Sample  
SS - Split Tube Sampler  
WS - Water Sample  
PT - Push Tube  
CU - Cuttings  
CT - Continuous Tube

**ABBREVIATIONS**

WOH - Weight Of Hammer  
T.O.B. - Time Of Boring

**I-85 Rehab MM77 to MM84  
Spartanburg, SC  
G5439.00**

**LOG OF BORING No. B-4**

Station:  
Offset:

Date Drilled: 4/28/2015

Supervisor: M Touchberry

Ground Elevation (ft): 727.5

Water Level: 5.4 Feet at T.O.B.

Notes:

Geoprobe 7822 Track Rig

All Drilling Equipment Decontaminated Prior to Start of Boring.

Elevation (ft)	Depth (ft)	MATERIAL DESCRIPTION	Graphic Log	Sample Depth (ft)	Sample Type-No.	PID (ppm)	COMMENTS
	0.5	<b>TOPSOIL (6")</b> Firm to Stiff, Moist, Light Reddish Brown, Fine to Coarse Sandy <u>CLAY (CL)</u> =>Light Orangish Brown		0.0			
				2.0	SS-1	0.58	
				4.0	SS-2	0.34	
722.5		▽=>Light Yellowish Brown		6.0	SS-3	0.76	Soil Sample Collected at 4.0 to 6.0 Feet Water Sample Collected at 5.4 Feet at T.O.B.
	6.5	Loose, Wet, Orange, Clayey Fine to Coarse <u>SAND (SC)</u>		8.0	SS-4	0.42	
	8.0	Very Soft, Wet, Light Yellowish Brown, <u>SILT (ML)</u>		8.0	SS-5	0.46	
717.5				12.5			
	12.5	<b>SAPROLITE</b> Firm, Moist to Wet, Dark Brown/Orange, <u>SILT (ML)</u> , with Gravel Seams, Mottled =>Very Soft to Soft, Light Orangish Brown		15.0	SS-6	0.56	
712.5				17.5	SS-7	0.69	
				20.0	SS-8	0.42	
707.5				22.5	SS-9	0.54	
		=>Firm to Stiff		25.0	SS-10	1.05	

LEGEND

Continued Next Page

SAMPLER TYPE

ABBREVIATIONS

DS - Disturbed Sample  
SS - Split Tube Sampler  
WS - Water Sample  
PT - Push Tube  
CU - Cuttings  
CT - Continuous Tube

WOH - Weight Of Hammer  
T.O.B. - Time Of Boring



**LOG OF BORING No. B-4**

**I-85 Rehab MM77 to MM84  
Spartanburg, SC  
G5439.00**

Station:  
Offset:

Date Drilled: 4/28/2015

Supervisor: M Touchberry

Ground Elevation (ft): 727.5

Water Level: 5.4 Feet at T.O.B.

**Notes:**

Geoprobe 7822 Track Rig

All Drilling Equipment Decontaminated Prior to Start of Boring.

Elevation (ft)	Depth (ft)	MATERIAL DESCRIPTION	Graphic Log	Sample Depth (ft)	Sample Type-No.	PID (ppm)	COMMENTS	
697.5		=>Hard, Dark Brownish Black with Orange			SS-11	1.25	Soil Sample Collected at 25.0 to 26.50 Feet	
				27.5				
						SS-12		0.43
				30.0				
						SS-13		0.65
				32.5				
		=>Dark Reddish Brown				SS-14		0.72
692.5		=>Olive Brown			35.0			
						SS-15		0.0
				37.5				
		=>Reddish Brown				SS-16		0.0
687.5	40.0	<b>PARTIALLY WEATHERED ROCK (PWR)</b> Hard, Moist to Wet, Dark Brownish Black, SILT (ML), with Gravel			40.0			
						SS-17		0.0
				42.5				
				43.3		SS-18		0.0
						SS-19		0.0
682.5	44.0	Boring Terminated at 44.0 feet Due to Auger Refusal						

**LEGEND**

**SAMPLER TYPE**

DS - Disturbed Sample  
SS - Split Tube Sampler  
WS - Water Sample

PT - Push Tube  
CU - Cuttings  
CT - Continuous Tube

**ABBREVIATIONS**

WOH - Weight Of Hammer  
T.O.B. - Time Of Boring

**I-85 Rehab MM77 to MM84  
Spartanburg, SC  
G5439.00**

**LOG OF BORING No. B-5**

Station:  
Offset:

Date Drilled: 6/17/2015

Supervisor: M Touchberry

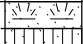

Ground Elevation (ft): 758.5

Water Level: 32.8 Feet at T.O.B.

Notes:

CME-550 ATV

All Drilling Equipment Decontaminated Prior to Start of Boring.

Elevation (ft)	Depth (ft)	MATERIAL DESCRIPTION	Graphic Log	Sample Depth (ft)	Sample Type-No.	PID (ppm)	COMMENTS
	0.5	<b>TOPSOIL (6")</b> Stiff to Very Stiff, Dry to Moist, Brownish Red, Fine Sandy <u>SILT (ML)</u> =>with Rock		0.0	SS-1	0.1	Soil Sample Collected 4.0 - 6.0 Feet
				2.0	SS-2	0.0	
	3.5			4.0	SS-3	0.0	
753.5	4.0	Medium Dense, Dry, Light Orangish Yellow, Silty Fine to Coarse <u>SAND (SM)</u> , with Quartz rock Firm to Soft, Dry to Moist, Brownish Red, <u>SILT (ML)</u> , with Gravel and Mica		6.0	SS-4	0.0	
		=>Very Soft, Dark Brownish Red, no rock		8.0	SS-5	0.0	
748.5				12.5			
		=>Stiff to Very Stiff =>2" Quartz rock layer =>Reddish Orange		15.0	SS-6	0.1	
743.5		=>with Rock		17.5			
				20.0	SS-7	0.5	
				22.5	SS-8	0.2	
738.5		=>Light Brown with Mica		25.0	SS-9	0.0	
		=>1" Quartz rock layer			SS-10	0.0	

**LEGEND**

*Continued Next Page*

**SAMPLER TYPE**

**ABBREVIATIONS**

DS - Disturbed Sample  
SS - Split Tube Sampler  
WS - Water Sample  
PT - Push Tube  
CU - Cuttings  
CT - Continuous Tube

WOH - Weight Of Hammer  
T.O.B. - Time Of Boring



**I-85 Rehab MM77 to MM84  
Spartanburg, SC  
G5439.00**

**LOG OF BORING No. B-5**

Station:  
Offset:

Date Drilled: 6/17/2015

Supervisor: M Touchberry

Ground Elevation (ft): 758.5

Water Level: 32.8 Feet at T.O.B.

Notes:  
CME-550 ATV  
All Drilling Equipment Decontaminated Prior to Start of Boring.

Elevation (ft)	Depth (ft)	MATERIAL DESCRIPTION	Graphic Log	Sample Depth (ft)	Sample Type-No.	PID (ppm)	COMMENTS	
728.5					SS-11	0.0		
				27.5		SS-12	0.0	Soil Sample Collected 27.5 - 29.0 Feet
				30.0		SS-13	0.0	
				32.5				
	32.5	<b>PARTIALLY WEATHERED ROCK (PWR)</b> Hard, Wet, Dark Brown/Black, Fine Sandy SILT (ML), with rock				SS-14	0.0	Water Sample Collected at T.O.B. 32.8 Feet
723.5					35.0			
						SS-15	0.0	
					37.5			
						SS-16	0.0	
718.5					40.0			
						SS-17	0.0	
					42.5			
						SS-18	0.0	
713.5					45.0			
						SS-19	0.0	
					47.5			
						SS-20	0.0	
					50.0			

**LEGEND**

*Continued Next Page*

SAMPLER TYPE	
DS - Disturbed Sample	PT - Push Tube
SS - Split Tube Sampler	CU - Cuttings
WS - Water Sample	CT - Continuous Tube

ABBREVIATIONS	
WOH - Weight Of Hammer	T.O.B. - Time Of Boring

<b>I-85 Rehab MM77 to MM84</b> <b>Spartanburg, SC</b> <b>G5439.00</b>	<b>LOG OF BORING No. B-5</b>  Station: Offset:
Date Drilled: 6/17/2015	Notes: CME-550 ATV  All Drilling Equipment Decontaminated Prior to Start of Boring.
Supervisor: M Touchberry	
Ground Elevation (ft): 758.5	
Water Level: 32.8 Feet at T.O.B.	

Elevation (ft)	Depth (ft)	MATERIAL DESCRIPTION	Graphic Log	Sample Depth (ft)	Sample Type-No.	PID (ppm)	COMMENTS
703.5	54.5	Boring Terminated at 54.5 feet due to Auger Refusal			SS-21	0.0	
				52.5			
						SS-22	0.0
				54.3 54.5		SS-23	0.0
698.5							
693.5							
688.5							

**LEGEND**

<b>SAMPLER TYPE</b>		<b>ABBREVIATIONS</b>	
DS - Disturbed Sample	PT - Push Tube	WOH - Weight Of Hammer	T.O.B. - Time Of Boring
SS - Split Tube Sampler	CU - Cuttings		
WS - Water Sample	CT - Continuous Tube		



**I-85 Rehab MM77 to MM84  
Spartanburg, SC  
G5439.00**

**LOG OF BORING No. HA-4**

Station:  
Offset:

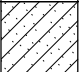

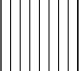
Date Drilled: 4/28/2015

Supervisor: M Touchberry

Ground Elevation (ft): 722.3

Water Level: None at T.O.B.

Notes:

Elevation (ft)	Depth (ft)	MATERIAL DESCRIPTION	Graphic Log	Sample Depth (ft)	Sample Type-No.	PID (ppm)	COMMENTS
717.3	0.5	Moist, Yellowish Brown, Clayey Fine to Medium <u>SAND (SC)</u>		0.5	DS-1	0.0	
	1.5			1.5	DS-2	0.1	
	2.5	Moist, Yellowish Brown, Fine to Medium Sandy <u>SILT (ML)</u> , with Clay		2.5	DS-3	0.2	
	3.5			3.5	DS-4	0.3	
	4.5	Moist, Reddish Brown <u>SILT (ML)</u>  =>Light Reddish Brown		4.5	DS-5	0.3	
	5.5			5.5	DS-6	0.3	
6.0	6.0	Hand Auger Terminated at 6.0 feet				Soil Sample Collected at 5.5 to 6.0 Feet	
712.3							
707.3							
702.3							

**LEGEND**

**SAMPLER TYPE**

DS - Disturbed Sample  
SS - Split Tube Sampler  
WS - Water Sample  
PT - Push Tube  
CU - Cuttings  
CT - Continuous Tube

**ABBREVIATIONS**

WOH - Weight Of Hammer  
T.O.B. - Time Of Boring

**I-85 Rehab MM77 to MM84  
Spartanburg, SC  
G5439.00**

**LOG OF BORING No. HA-5**

Station:  
Offset:






Date Drilled: 6/17/2015

Supervisor: M Touchberry

Ground Elevation (ft): 758.0

Water Level: None at T.O.B.

Notes:

Elevation (ft)	Depth (ft)	MATERIAL DESCRIPTION	Graphic Log	Sample Depth (ft)	Sample Type-No.	PID (ppm)	COMMENTS
	1.5	<b>RAILROAD BALLAST</b>		1.5			
		Moist, Red, Fine to Medium Sandy <u>SILT (ML)</u>		2.5	DS-1	0.0	
		=>with Black Organics		3.5	DS-2	0.0	
		Moist, Brown, <u>SILT (ML)</u> , with Mica and Gravel		4.5	DS-3	0.0	
753.0		Moist, Brown, Silty Fine to Medium <u>SAND (SM)</u> , with Mica		5.5	DS-4	0.0	
	6.0	Hand Auger Terminated at 6.0 feet			DS-5	0.0	Soil Sample Collected at 5.5 to 6.0 Feet
748.0							
743.0							
738.0							

**LEGEND**

SAMPLER TYPE		ABBREVIATIONS	
DS - Disturbed Sample	PT - Push Tube	WOH - Weight Of Hammer	T.O.B. - Time Of Boring
SS - Split Tube Sampler	CU - Cuttings		
WS - Water Sample	CT - Continuous Tube		

**I-85 Rehab MM77 to MM84  
Spartanburg, SC  
G5439.00**

**LOG OF BORING No. HA-6**

Station:  
Offset:

Date Drilled: 6/18/2015

Supervisor: M Touchberry

Ground Elevation (ft): 755.6

Water Level: None at T.O.B.

Notes:

Elevation (ft)	Depth (ft)	MATERIAL DESCRIPTION	Graphic Log	Sample Depth (ft)	Sample Type-No.	PID (ppm)	COMMENTS
	0.5	<b>RAILROAD BALLAST</b>		0.5	DS-1	0.0	Soil Sample Collected at 4.5 to 5.0 Feet
		<b>STONEBASE</b>		1.5	DS-2	0.0	
	1.7	Moist, Orangish Brown, Silty <u>CLAY (CL-ML)</u> , with Fine to Medium Sand and Mica =>Reddish Brown		2.5	DS-3	0.0	
				3.5	DS-4	0.2	
750.6		=>Orangish Brown		4.5	DS-5	0.2	
				5.5	DS-6	0.1	
	6.0	Hand Auger Terminated at 6.0 feet					
745.6							
740.6							
735.6							

**LEGEND**

SAMPLER TYPE		ABBREVIATIONS	
DS - Disturbed Sample	PT - Push Tube	WOH - Weight Of Hammer	T.O.B. - Time Of Boring
SS - Split Tube Sampler	CU - Cuttings		
WS - Water Sample	CT - Continuous Tube		

**I-85 Rehab MM77 to MM84  
Spartanburg, SC  
G5439.00**

**LOG OF BORING No. HA-7**

Station:  
Offset:

Date Drilled: 6/18/2015

Supervisor: M Touchberry

Ground Elevation (ft): 754.8

Water Level: None at T.O.B.

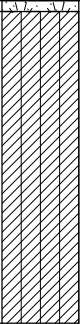
Notes:

Elevation (ft)	Depth (ft)	MATERIAL DESCRIPTION	Graphic Log	Sample Depth (ft)	Sample Type-No.	PID (ppm)	COMMENTS
	0.5	<b>RAILROAD BALLAST</b>		0.5	DS-1	0.0	Soil Sample Collected at 2.5 to 3.0 Feet
	1.5	Moist, Brownish Orange, Fine to Medium Sandy <u>SILT (ML)</u> , with Clay		1.5	DS-2	0.0	
	2.5	Moist, Brownish Orange, Silty <u>CLAY (CL-ML)</u> , with Fine to Coarse Sand, Gravel, and Mica		2.5	DS-3	0.0	
	3.5	Moist to Wet, Brownish Orange, Fine to Medium Sandy <u>SILT (ML)</u> , with Rock and Mica		3.5	DS-4	0.0	
749.8	5.0	Moist, Light Brown, <u>SILT (ML)</u> , with Mica and Gravel		4.5	DS-5	0.0	
	6.0	Hand Auger Terminated at 6.0 feet		5.5	DS-6	0.0	
744.8							
739.8							
734.8							

**LEGEND**

SAMPLER TYPE		ABBREVIATIONS	
DS - Disturbed Sample	PT - Push Tube	WOH - Weight Of Hammer	T.O.B. - Time Of Boring
SS - Split Tube Sampler	CU - Cuttings		
WS - Water Sample	CT - Continuous Tube		



I-85 Rehab MM77 to MM84 Spartanburg, SC G5439.00				LOG OF BORING No. HA-8			
Date Drilled: 6/18/2015				Station: Offset: Notes:			
Supervisor: M Touchberry							
Ground Elevation (ft): 742.5							
Water Level: None at T.O.B.							
Elevation (ft)	Depth (ft)	MATERIAL DESCRIPTION	Graphic Log	Sample Depth (ft)	Sample Type-No.	PID (ppm)	COMMENTS
	0.2	<b>TOPSOIL (2.0")</b> Dry to Moist, Brownish Red, Silty <u>CLAY</u> (CL-ML), with Fine to Medium Sand and Mica		0.5	DS-1	0.0	Soil Sample Collected at 5.5 to 6.0 Feet
				1.5	DS-2	0.0	
				2.5	DS-3	0.0	
		=>Brownish Orange		3.5	DS-4	0.0	
737.5		=>Wet		4.5	DS-5	0.0	
	6.0	Hand Auger Terminated at 6.0 feet		5.5	DS-6	0.0	
732.5							
727.5							
722.5							

**LEGEND**

<p style="text-align: center;"><b>SAMPLER TYPE</b></p> <p>DS - Disturbed Sample      PT - Push Tube          SS - Split Tube Sampler    CU - Cuttings          WS - Water Sample          CT - Continuous Tube</p>	<p style="text-align: center;"><b>ABBREVIATIONS</b></p> <p>WOH - Weight Of Hammer      T.O.B. - Time Of Boring</p>
--	--