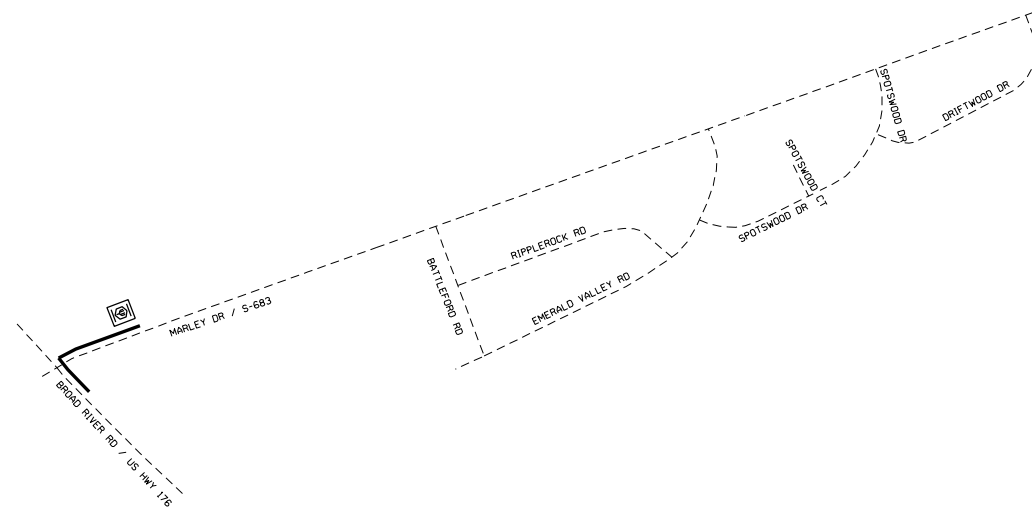




AS-BUILTS

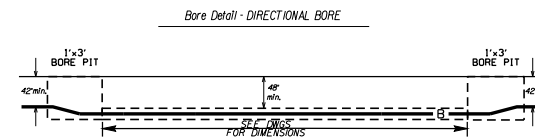
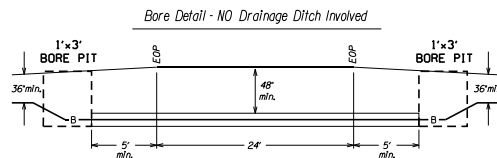
VICINITY MAP



BURIED SYMBOL LEGEND		
Proposed	Existing	Description
		BURIED CABLE
		BUR JOINT-TRENCH
		ENCLOSURE
		HANDHOLE
		MANHOLE
		PIPE/CONDUIT
		CABLE MARKER
		BURIED SVC WIRE
		JOINT-TRENCH SVC
	N/A	BORE
	N/A	CUT PAVEMENT
	N/A	SPlicing PIT
200' @ (24")	N/A	TRENCH LENGTH/DEPTH
N/A		WATER METER
N/A		FIRE HYDRANT

CABLE PLACEMENT INFO

TOTAL CABLE TO BE PLACED: 644 FEET
DIRECTIONAL BORE: 644 FEET
JACK & BORE: 0 FEET
CABLE TO BE PLACED A MINIMUM
OF 42" DEPTH UNLESS OTHERWISE
STATED ON DRAWINGS
ALL BORE PITS TO BE MINIMUM OF 5'
FROM EDGE OF PAVEMENT.



ATTSE

PROPOSED TELEPHONE FACILITIES
ON RIGHT OF WAY OF
Richland Co, SCDOT

VICINITY MAP

Exchange:

803731

Designer:

Carter, Josh

Phone:

704-856-7097

Authorization:

89D21886N

Dwg. 1 of 4



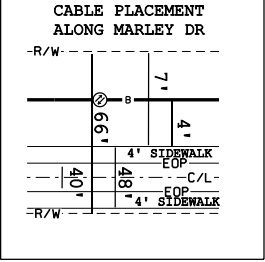
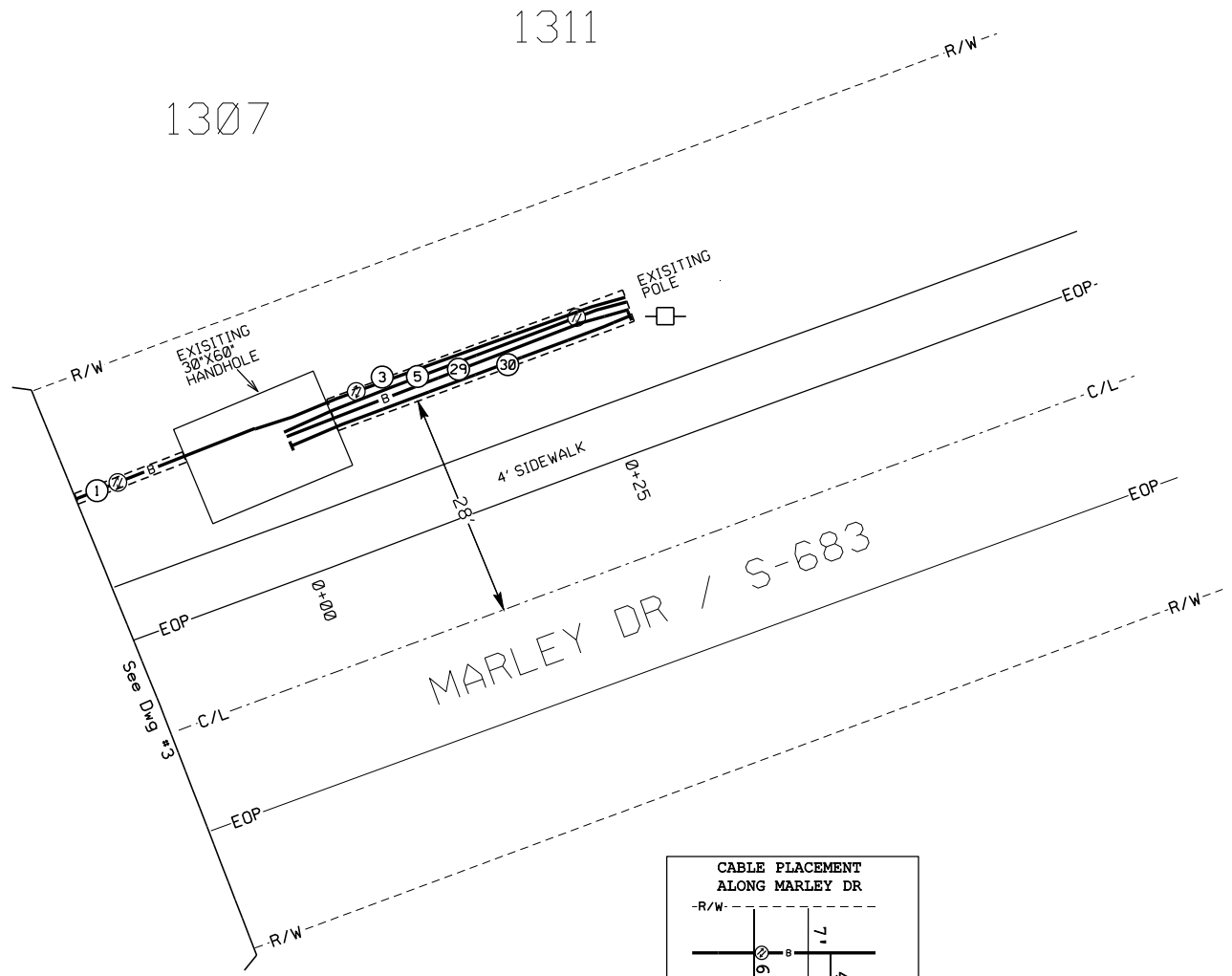
① PROPOSED FIBER CABLE
50' DIRECTIONAL BORE

③ PROPOSED FIBER CABLE
27' DIRECTIONAL BORE

⑤ PROPOSED FIBER CABLE
27' DIRECTIONAL BORE

②⑨ PROPOSED CONDUIT
27' DIRECTIONAL BORE

③⑩ PROPOSED CONDUIT
27' DIRECTIONAL BORE

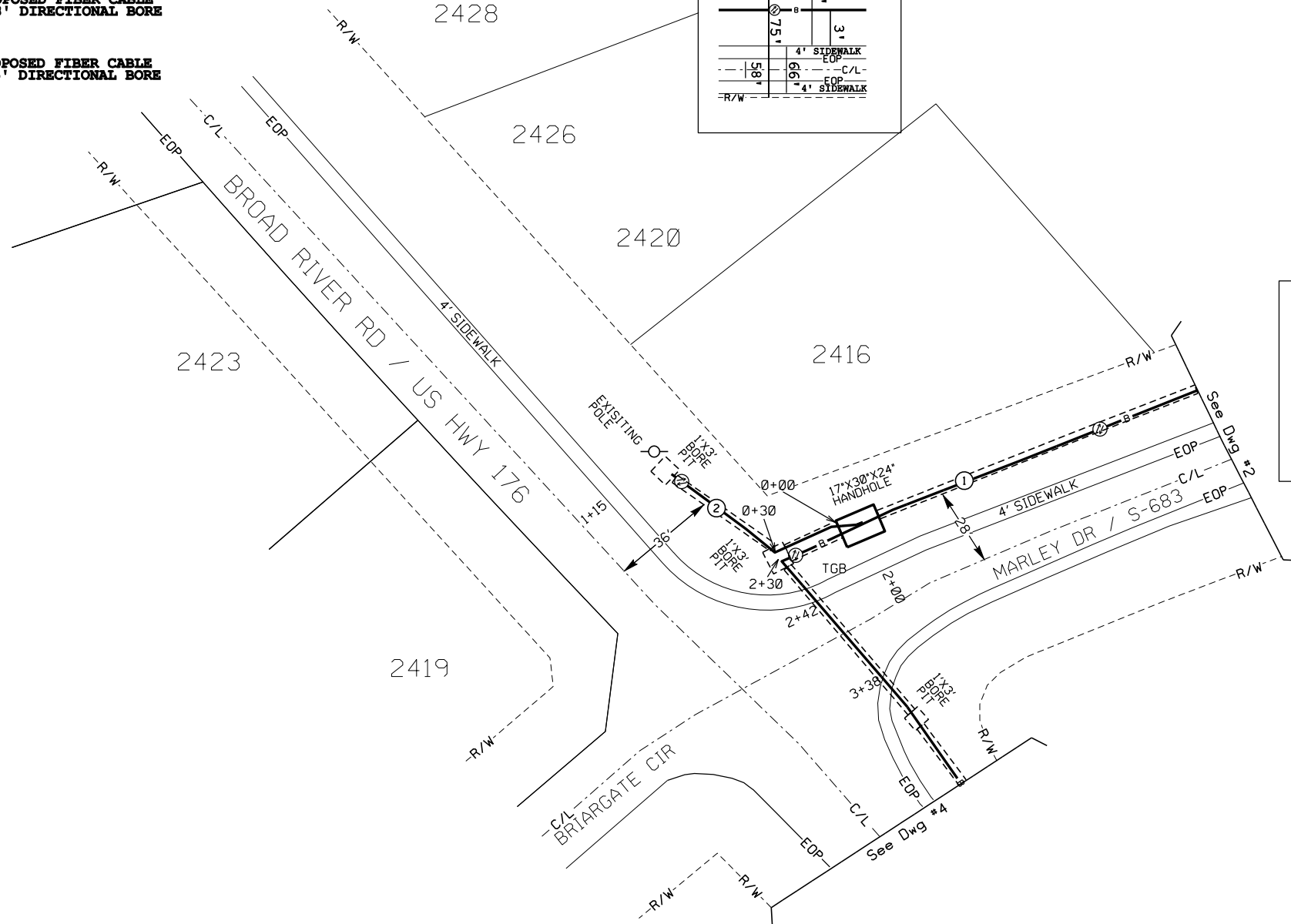
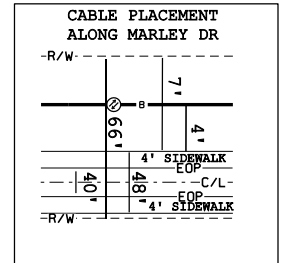
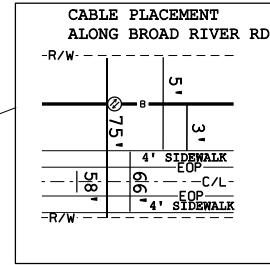


ATTSE	
PROPOSED TELEPHONE FACILITIES ON RIGHT OF WAY OF Richland Co, SCDOT	
VICINITY MAP	
Exchange:	80373I
Designer:	Carter, Josh
Phone:	704-856-7097
Authorization:	89D2I886N
Dwg.	2 of 4



① PROPOSED FIBER CABLE
288' DIRECTIONAL BORE

② PROPOSED FIBER CABLE
115' DIRECTIONAL BORE



ATTSE

PROPOSED TELEPHONE FACILITIES
ON RIGHT OF WAY OF
Richland Co, SCDOT

VICINITY MAP

Exchange:

803731

Designer:

Carter, Josh

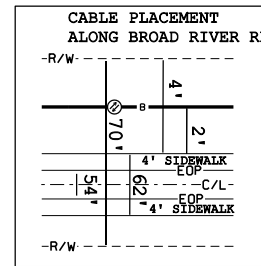
Phone:

704-856-7097

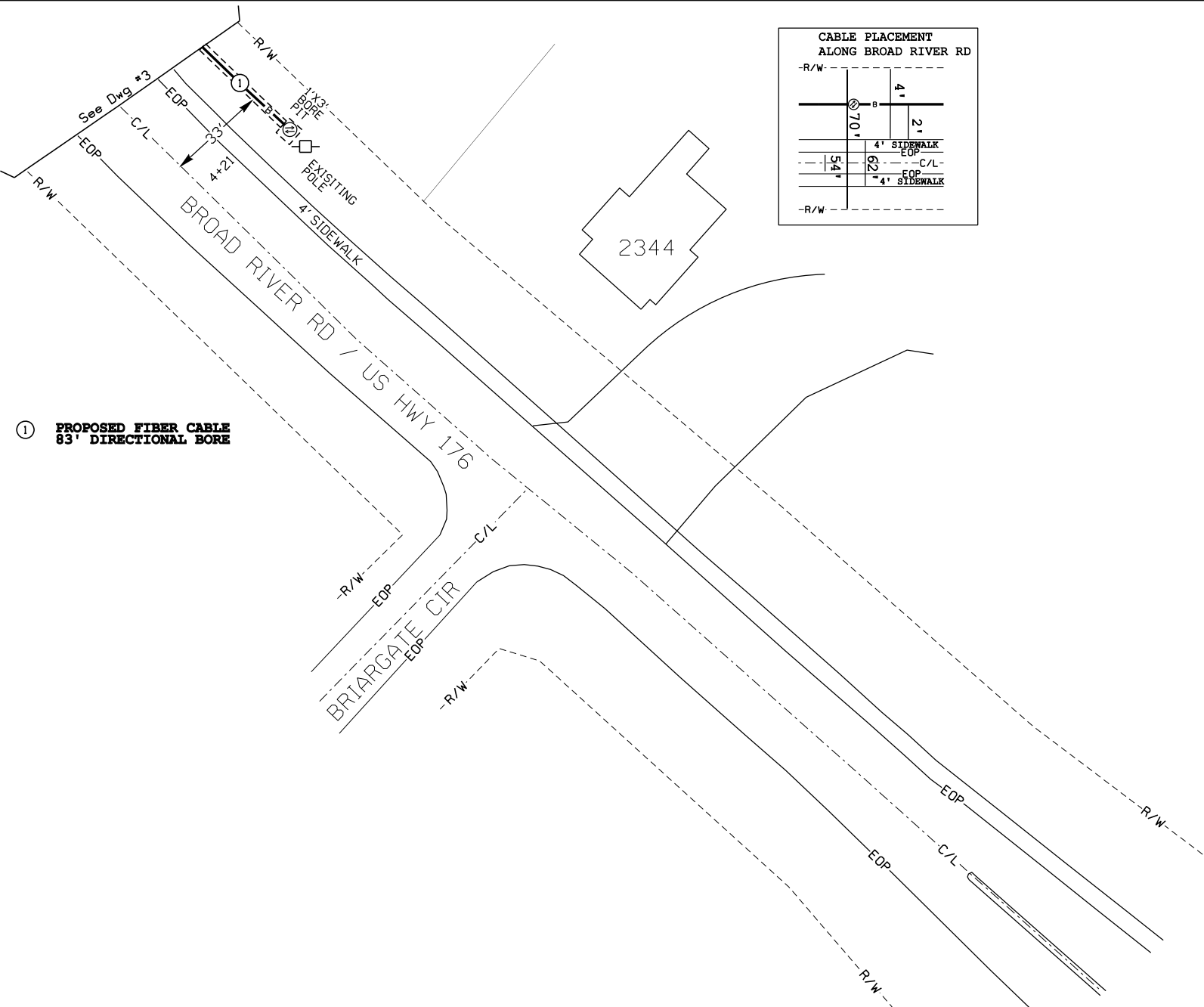
Authorization:

89D21886N

Dwg. 3 of 4



① PROPOSED FIBER CABLE
83' DIRECTIONAL BORE



ATTSE	
PROPOSED TELEPHONE FACILITIES ON RIGHT OF WAY OF Richland Co, SCDOT	
VICINITY MAP	
Exchange:	80373I
Designer:	Carter, Josh
Phone:	704-856-7097
Authorization:	89D2I886N
Dwg.	4 of 4