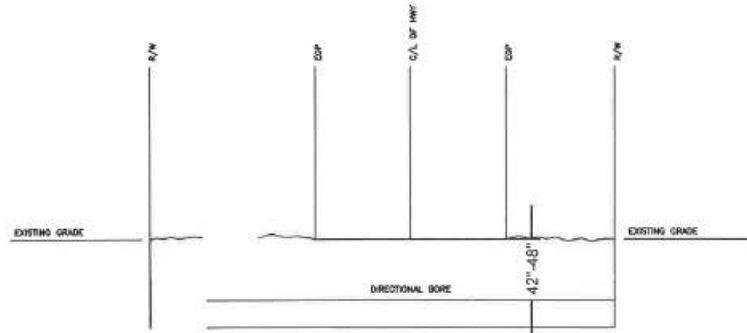
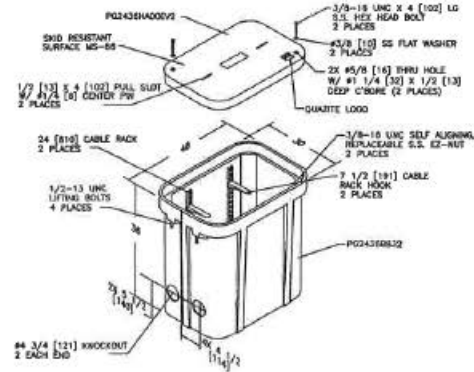


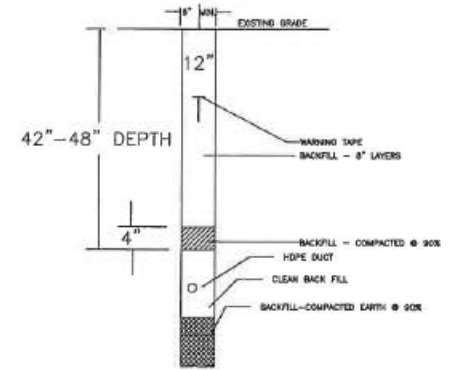
TYPICAL DETAIL - #1
DIRECTIONAL BORE
UNDER ROAD / HIGHWAY / INTERSTATE



TYPICALS

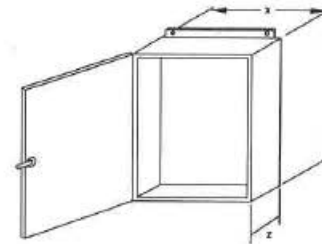
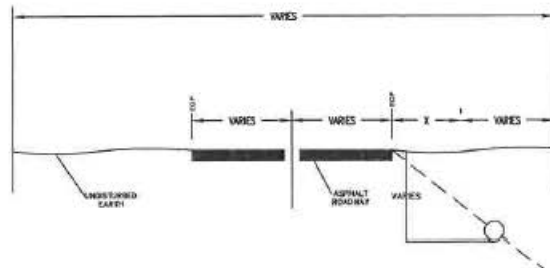


TYPICAL DETAIL - #3
QUARTZITE 30X48X36 BOX ASSEMBLY
W/(2) 24" CR, (2) 7 1/2" CR, HOOKS
& (4) #4 3/4 KNOCKOUT
PG24362978EV2



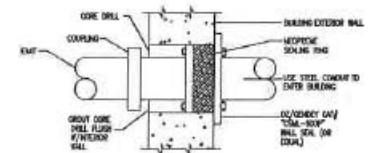
TYPICAL DETAIL - #4
TRENCH IN SOIL (NON TRAFFIC AREAS)

TYPICAL DETAIL "H"
PARALLEL CONDUIT DETAIL FOR DOT R/W



PULL BOX TYPE	1"	2"
DISTRIBUTION	24"	24"
CABLE STORAGE	36"	36"

TYPICAL DETAIL - 1
TYPICAL SINGLE DOOR
HOFFMAN LOCKING PULL BOX



TYPICAL DETAIL - #2
CONDUIT SEAL

SYMBOL CORRESPONDS TO PHOTO LOCATIONS AND ORIENTATION. SEE SHEET # FOR SITE PHOTOGRAPHS.

NO	DATE	ENG DESIGN	DRAFTING	COMMENT
3				AS-BUILT
2				REVISION # 1
1	5/10/17	RH	MM	ORIGINAL

