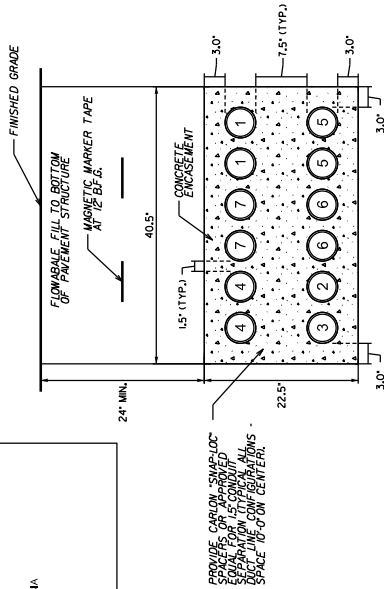
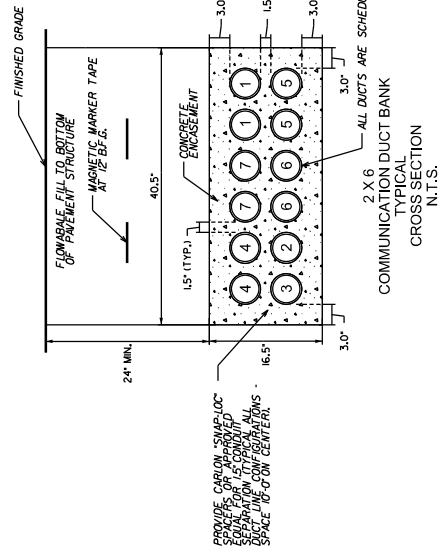


CONDUIT IDENTIFICATION SCHEDULE			
①	SEGRA		
②	AT&T		
③	DOMINION		
④	CITY OF COLUMBIA		
⑤	UNIV. OF SC		
⑥	SPECTRUM		
⑦	CENTURY LINK		

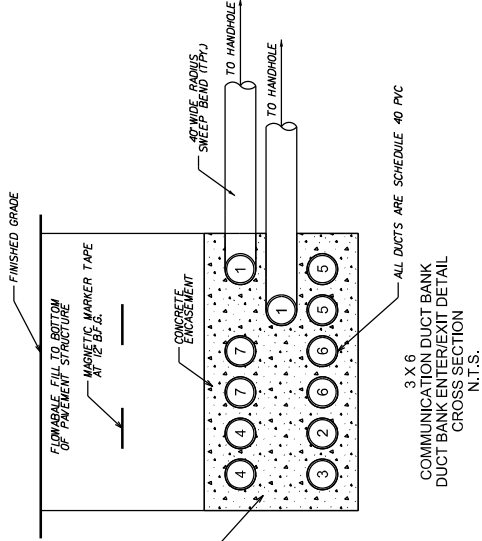
PROJECT NO.	DATE	COUNTY	PROJECT NAME	SCALE
1008973	3/26/2020	RICHLAND	POB08973	S-3054



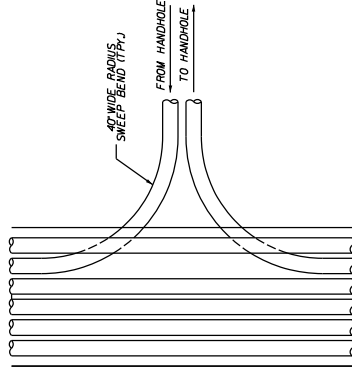
3 X 6
COMMUNICATION DUCT BANK
HANDHOLE TRANSITION
CROSS SECTION
N.T.S.



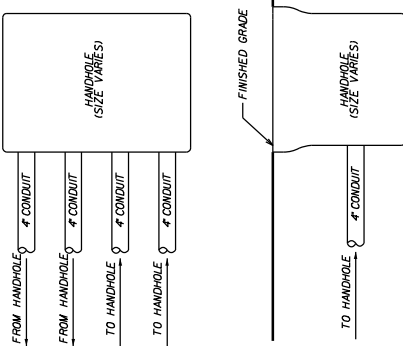
2 X 6
COMMUNICATION DUCT BANK
TYPICAL
CROSS SECTION
N.T.S.



3 X 6
COMMUNICATION DUCT BANK
DUCT BANK ENTER/EXIT DETAIL
CROSS SECTION
N.T.S.



3 X 6
COMMUNICATION DUCT BANK
HANDHOLE ENTER/EXIT DETAIL
PLAN VIEW
N.T.S.



HANDHOLE ENTER/EXIT DETAIL
PLAN AND CROSS SECTION
N.T.S.

NOTES FOR COMMUNICATION JOINT-USED DUCTBANK:
PROVIDE QUANTITY AND RACEWAY DESIGNATIONS AS NOTED ON TYPICALS FOR EACH SECTION OF DUCTBANK.
CONTRACTOR IS CAUTIONED THAT NOT ALL EXISTING UNDERGROUND UTILITY LOCATIONS ARE KNOWN.
BEFORE DIGGING, CONTACT UNDERGROUND UTILITY SERVICE.
BEFORE DIGGING, THE CONTRACTOR SHALL VERIFY THE LOCATION AND DEPTH OF ALL EXISTING UTILITIES, INCLUDING FIBER OPTIC, BY USING GROUND PENETRATING RADAR (GPR) AND/OR OTHER APPROPRIATE METHODS.
BEFORE DIGGING, THE CONTRACTOR SHALL VERIFY THE LOCATION AND DEPTH OF ALL EXISTING UTILITIES, INCLUDING FIBER OPTIC, BY USING GROUND PENETRATING RADAR (GPR) AND/OR OTHER APPROPRIATE METHODS.
SEE HANDHOLE AND DUCTBANK DETAILS FOR INSTALLATION DETAILS.
PROVIDE PULL ROPE IN ALL EMPTY RACEWAYS, SEE SPEC.
ALL DUCTS SHALL BE SCHEDULE 40 PVC EXCEPT WHERE ELBOWS OR BENDS ARE REQUIRED. ALL SUCH CHANGES IN DIRECTION SHALL BE ACCOMPLISHED USING RIGID GALVANNEED CONDUIT BENDS.
ALL TURNS SHALL BE MINIMUM 40° RADIUS SWEEP BEND TYPE.
ALL CONDUITS SHALL BE MINIMUM 40° RADIUS SWEEP BEND TYPE.
GASKET - FIFTY CONDUITS IN THE HANDHOLES AND LABEL BOTH ENDS WITH BRASS DUCTBANK CROSS SECTIONS ARE TYPICAL AND MAY BE ALTERED BY THE CONTRACTOR FOR PURPOSES OF MORE LOGICAL ENTRY/EXIT LOCATIONS TO AND FROM DUCTBANKS. OTHER DRAWINGS AND SHALL BE PERFORMED WITH NO ADDITIONAL COST TO THE OWNER.
THE JOINT UTILITY DUCTBANK CONTRACTOR SHALL COORDINATE WITH ALL UTILITY CONTRACTORS TO VERIFY EXACT HANDHOLE LOCATIONS AND ALL UNDERGROUND TO ABOVEGROUND TRANSITIONS WITH RESPECTIVE UTILITY COMPANY.
COORDINATE WITH UTILITY COMPANIES FOR TRANSITION POLE LOCATIONS AS REQUIRED FOR UNDERGROUND TO ABOVEGROUND TRANSITIONS.

SOUTH CAROLINA DEPARTMENT OF TRANSPORTATION ROAD DESIGN		COLUMBIA S.C. SOUTH MAIN STREET STREETScape S-3054	
101 Research Drive Columbia, South Carolina 29203 Telephone: (803) 799-1466 www.AECOM.com		AECOM	
DATE	DATE	DATE	DATE
REV	REV	REV	REV
SQUAD		SCALE: N.T.S.	
SHEET NO. UC27		SHEET NO. UC27	