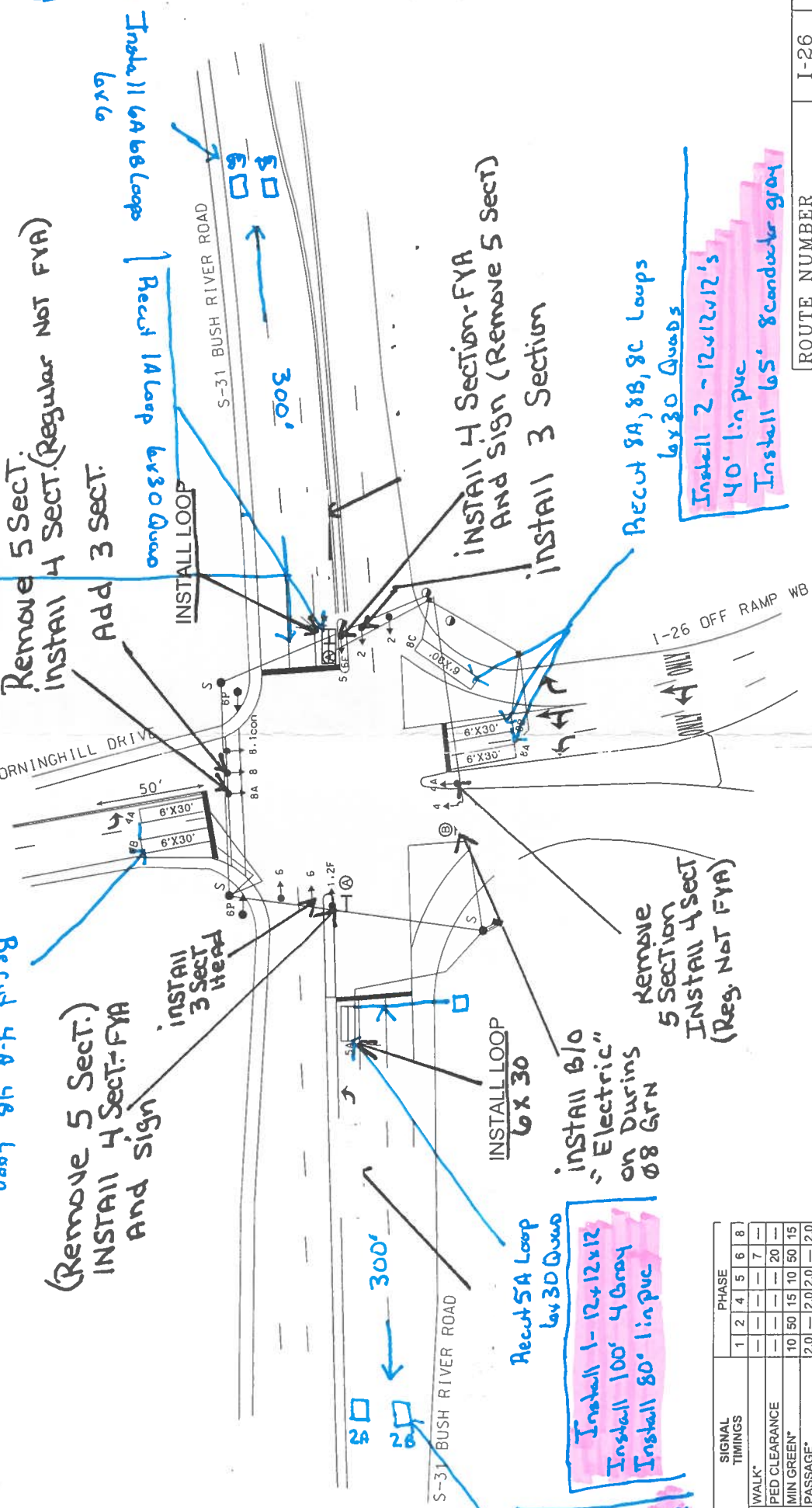
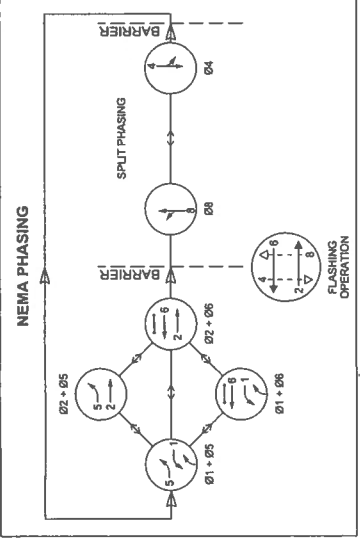


DONE
12-14-18
BUSH RIVER CO=40 M.P.=0.18
#1566
JES'S COPY (Going to Quad)
#1566
PAGE 1

EQUIPMENT INFORMATION	
CONTROLLER	EXISTING
CABINET	EXISTING
SOFTWARE	APOGEE STREETWISE
CABINET MOUNT	CONCRETE BASE
PHASES USED	1,2,4,5,6,8,6P
OVERLAPS	OLA=01+02 (FYA) OLC=06+06 (FYA)

SIGNAL HEAD DISPLAYS									
HEAD #	1,2F	2	4A	4	5,6F	6	8A	8	8,1oon
DISPLAY									
PHASE	1,OLA	2	4	4	5,OLC	6	8	8	8,1
SIZE	12"	12"	12"	12"	12"	12"	12"	12"	12"
QUANTITY	1	2	1	1	1	2	1	1	1
NEW	1	1	1	1	1	1	1	1	1

PHASE IN OPERATION											
TABLE OF OPERATION		01	02	02	02	04	08	F L A S H			
SIGNAL HEAD #		05	06	05	06	05	06	05 06 05 06			
1,2F		05	06	05	06	05	06	05 06 05 06			
2		R	R	G	R	G	R	R R G R R R			
4A		R	R	G	R	G	R	R R G R R R			
5,6F		R	R	G	R	G	R	R R G R R R			
6		R	R	G	R	G	R	R R G R R R			
8A		R	R	G	R	G	R	R R G R R R			
8		R	R	G	R	G	R	R R G R R R			
8,1		R	R	G	R	G	R	R R G R R R			
8P		DW	W	DW	W	DW	W	DW W DW W DW W			
SIGN B		OFF	OFF	OFF	OFF	OFF	OFF	OFF OFF OFF OFF OFF OFF			



LOOP DETECTOR INSTALLATION CHART	
LOOP	SIZE (FT)
1A	6x30
4A	6x30
4B	6x30
5A	6x30
8A	6x30
8B	6x30
8C	6x30

SIGNAL TIMINGS	
WALK*	1 2 3 4 5 6 7 8
PED CLEARANCE	— — — — — — — —
MIN GREEN*	10 50 15 10 50 15
PASSAGE*	2.0 — 2.0 2.0 — 2.0
MAX 1*	40 50 40 40 50 40
YELLOW	3.0 4.2 3.9 3.0 4.2 3.3
RED	3.0 2.7 2.5 3.9 2.7 3.4
RED REVERT	— — — — — — — —
ADDED INITIAL*	— — — — — — — —
MAX INITIAL*	— — — — — — — —
TIME BEFORE REDUCE*	— — — — — — — —
TIME TO REDUCE*	— — — — — — — —
MIN GAP	— — — — — — — —
LOCK CALL	— — — — — — — —
RECALL MODE	— — — — — — — —
DUAL ENTRY	— — — — — — — —

* VALUES MAY BE FIELD ADJUSTED. DO NOT ADJUST MIN GREEN TIMES FOR PHASES 2 & 6 LOWER THAN WHAT IS SHOWN. MIN GREEN TIMES FOR ALL OTHER PHASES SHOULD NOT BE LOWER THAN 4 SECONDS.

PROPOSED

LEFT TURN YIELD ON FLASHING

R10-12A-30

SIGN B TO BE "ON" DURING 08 GREEN

ELECTRICALLY OPERATED BLANK OUT MESSAGE SIGN

ROUTE NUMBER	I-26	S-31
APPROACH DIRECTION	NB SB	EB WB
SIGNAL DESIGN SPEED	40 40	30 30
GRADE (%)	1.5 -7.5	-1.5 0

- NOTES:
1. ALL WORK SHALL BE PERFORMED IN ACCORDANCE WITH THE STANDARD SPECIFICATIONS FOR HIGHWAY CONSTRUCTION, INCLUDING STANDARD DRAWINGS, TRAFFIC SIGNAL SPECIFICATIONS, AND SIGNAL DESIGN GUIDELINES.
 2. ALL WORK SHALL BE PERFORMED WITHIN SCDDT RIGHT OF WAY.
 3. COORDINATE WITH EXISTING UTILITIES FOR SIGNAL INSTALLATION.
 4. RETURN ALL EXISTING TRAFFIC SIGNAL EQUIPMENT, POLES, AND STOP SIGNS TO SCDDT.
 5. PROGRAM CONTROLLER TO START UP IN PHASES 2 & 6 GREEN.
 6. ENABLE SIMULTANEOUS GAP-OUT FEATURE ON CONTROLLER UNIT FOR ALL PHASES.
 7. PROGRAM PHASE 6 FOR 'STARTUP PED CALL'.
 8. SET ALL DETECTOR UNITS TO PRESENCE MODE.
 9. PHASE 1 AND/OR PHASE 5 MAY BE LAGGED.
 10. PROGRAM PEDESTRIAN HEADS TO COUNTDOWN THE FLASHING "DON'T WALK" TIME ONLY.
 11. "WALK" TIME AND "DON'T WALK" TIME SHALL INITIATE DURING CORRESPONDING THROUGH GREEN TIME AND SHALL COMPLETE PRIOR TO START OF YELLOW TIME FOR CORRESPONDING THROUGH MOVEMENT.
 12. INSTALL BACKPLATES ON ALL EXISTING AND PROPOSED SIGNAL HEADS.
 13. THE CABINET & CONTROLLER ARE PART OF THE BUSH RIVER @ COLONIAL LIFE SYSTEM.



SOUTH CAROLINA
DEPARTMENT OF TRANSPORTATION
TRAFFIC ENGINEERING COLUMBIA, S.C.

PROJECT: TRAFFIC SIGNAL PLAN REVISION

LOCATION: S-31 (BUSH RIVER RD) @ S-1276 (MORNINGHILL RD)/I-26 WB

CITY: COLUMBIA DISTRICT 1

CONTRACTOR: RICHLAND

SCALE: 1"=30'

DWG. NO. —