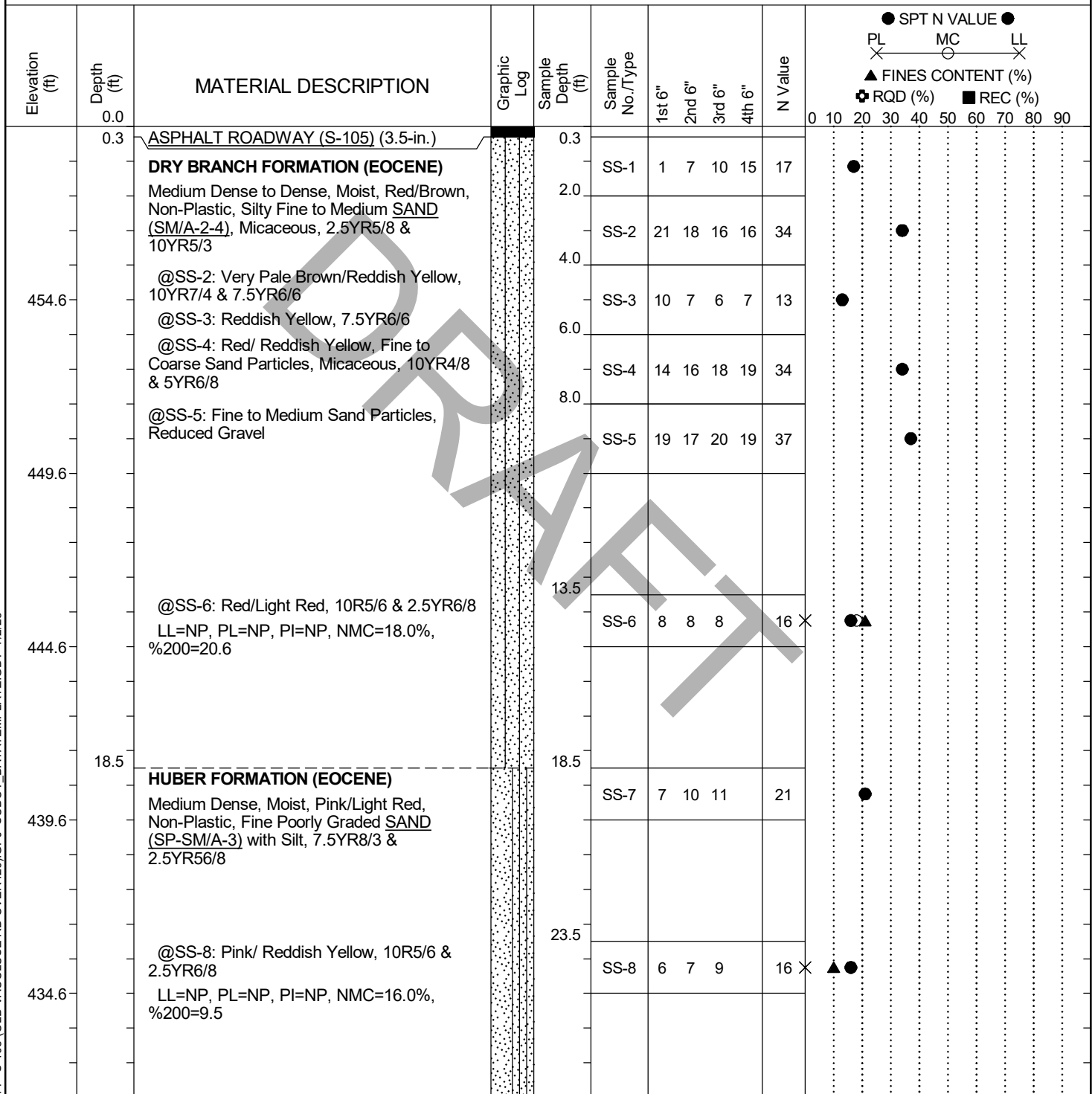


# SCDOT Soil Test Log

<b>Project ID:</b>	P044879	<b>County:</b>	Aiken	<b>Boring No.:</b>	B-1/DH-1
<b>Site Description:</b>	Old Vacluse Road Emergency Bridge Replacement			<b>Route:</b>	S-105
<b>Eng./Geo.:</b>	B. Vogel	<b>Boring Location:</b>	N/A	<b>Offset:</b>	N/A
<b>Elev.:</b>	459.6 ft	<b>Latitude:</b>	33.62058776	<b>Longitude:</b>	-81.82373431
<b>Date Started:</b>	6/16/2025				
<b>Total Depth:</b>	110 ft	<b>Soil Depth:</b>	110 ft	<b>Core Depth:</b>	N/A ft
<b>Date Completed:</b>	6/17/2025				
<b>Bore Hole Diameter (in):</b>	3.0	<b>Sampler Configuration</b>	<b>Liner Required:</b> Y (N)		<b>Liner Used:</b> Y (N)
<b>Drill Machine:</b>	CME 550X	<b>Drill Method:</b>	RW	<b>Hammer Type:</b>	Automatic
<b>Energy Ratio:</b>	81.2%				
<b>Core Size:</b>	N/A	<b>Driller:</b>	C. Taylor	<b>Groundwater:</b>	TOB NR
<b>24HR</b>	NR				



## LEGEND

Continued Next Page

SAMPLER TYPE		DRILLING METHOD	
SS - Split Spoon	NQ - Rock Core, 1-7/8"	HSA - Hollow Stem Auger	RW - Rotary Wash
UD - Undisturbed Sample	CU - Cuttings	CFA - Continuous Flight Augers	RC - Rock Core
AWG - Rock Core, 1-1/8"	CT - Continuous Tube	DC - Driving Casing	

# SCDOT Soil Test Log

<b>Project ID:</b>	P044879	<b>County:</b>	Aiken	<b>Boring No.:</b>	B-1/DH-1
<b>Site Description:</b>	Old Vaucluse Road Emergency Bridge Replacement			<b>Route:</b>	S-105
<b>Eng./Geo.:</b>	B. Vogel	<b>Boring Location:</b>	N/A	<b>Offset:</b>	N/A
<b>Elev.:</b>	459.6 ft	<b>Latitude:</b>	33.62058776	<b>Longitude:</b>	-81.82373431
<b>Date Started:</b>	6/16/2025				
<b>Total Depth:</b>	110 ft	<b>Soil Depth:</b>	110 ft	<b>Core Depth:</b>	N/A ft
<b>Date Completed:</b>	6/17/2025				
<b>Bore Hole Diameter (in):</b>	3.0	<b>Sampler Configuration</b>	<b>Liner Required:</b> Y (N)		<b>Liner Used:</b> Y (N)
<b>Drill Machine:</b>	CME 550X	<b>Drill Method:</b>	RW	<b>Hammer Type:</b>	Automatic
<b>Energy Ratio:</b>	81.2%				
<b>Core Size:</b>	N/A	<b>Driller:</b>	C. Taylor	<b>Groundwater:</b>	TOB NR
<b>24HR:</b>	NR				

Elevation (ft)	Depth (ft)	MATERIAL DESCRIPTION	Graphic Log	Sample Depth (ft)	Sample No./Type	1st 6"	2nd 6"	3rd 6"	4th 6"	N Value	<div> ● SPT N VALUE ●  PL X MC O LL X  ▲ FINES CONTENT (%)  ⊕ RQD (%) ■ REC (%) </div>
429.6	28.5	Medium Dense, Moist, Light Red/Reddish Yellow, Silty Fine to Medium SAND (SM/A-2-4), 2.5YR6/8 & 7.5YR7/6 @SS-9: LL=NP, PL=NP, PI=NP, NMC=20.6%, %200=13.1		28.5	SS-9	9	9	10		19 X	▲●
424.6	33.5	Hard to Very Stiff, Moist, Light Greenish Gray/Strong Brown, Non-Plastic to Medium Plasticity, SILT (ML/A-4), Micaceous, 10Y8/1, 7.5YR5/6 @SS-11: White/Yellow, 2.5Y8/1 & 2.5YR7/8		33.5	SS-10	10	12	19		31	●
419.6	38.5			38.5	SS-11	4	6	11		17	●
414.6	43.5	Medium Dense, Moist, Greenish Gray, High Plasticity, Silty Fine to Medium SAND (SM/A-7-5), Micaceous, 5GY5/1 @SS-12: LL=54, PL=32, PI=22, NMC=52.5%, %200=41.3		43.5	SS-12	4	4	8		12	● X ▲ X
409.6	48.5	Hard to Very Stiff, Moist, Pale Yellow, Low Plasticity to Medium Plasticity, Sandy SILT (ML/A-4), Micaceous, 5Y8/2 @SS-14: Pale Yellow/Brownish Yellow, 5Y8/2 & 10YR6/6		48.5	SS-13	9	14	23		37	●
404.6	53.5			53.5	SS-14	14	14	16		30	●

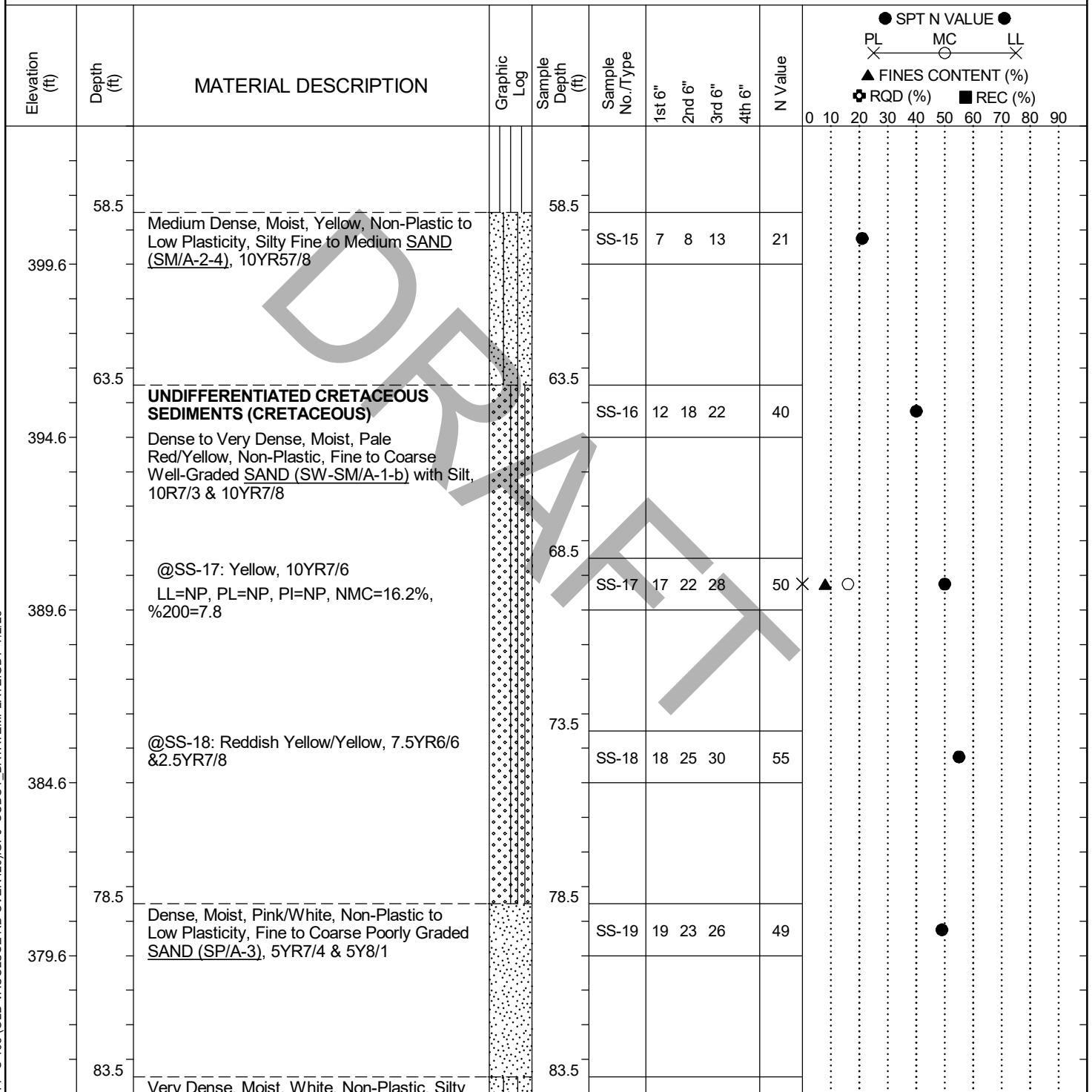
## LEGEND

Continued Next Page

SAMPLER TYPE		DRILLING METHOD	
SS - Split Spoon	NQ - Rock Core, 1-7/8"	HSA - Hollow Stem Auger	RW - Rotary Wash
UD - Undisturbed Sample	CU - Cuttings	CFA - Continuous Flight Augers	RC - Rock Core
AWG - Rock Core, 1-1/8"	CT - Continuous Tube	DC - Driving Casing	

# SCDOT Soil Test Log

Project ID: P044879				County: Aiken		Boring No.: B-1/DH-1		
Site Description:		Old Vaulcluse Road Emergency Bridge Replacement					Route: S-105	
Eng./Geo.: B. Vogel		Boring Location: N/A		Offset: N/A		Alignment: Existing		
Elev.:	459.6 ft	Latitude:	33.62058776	Longitude:	-81.82373431	Date Started: 6/16/2025		
Total Depth: 110 ft		Soil Depth: 110 ft		Core Depth: N/A ft		Date Completed: 6/17/2025		
Bore Hole Diameter (in): 3.0		Sampler Configuration		Liner Required: Y ⓘ		Liner Used: Y ⓘ		
Drill Machine: CME 550X		Drill Method: RW		Hammer Type: Automatic		Energy Ratio: 81.2%		
Core Size: N/A		Driller: C. Taylor		Groundwater: TOB NR		24HR NR		



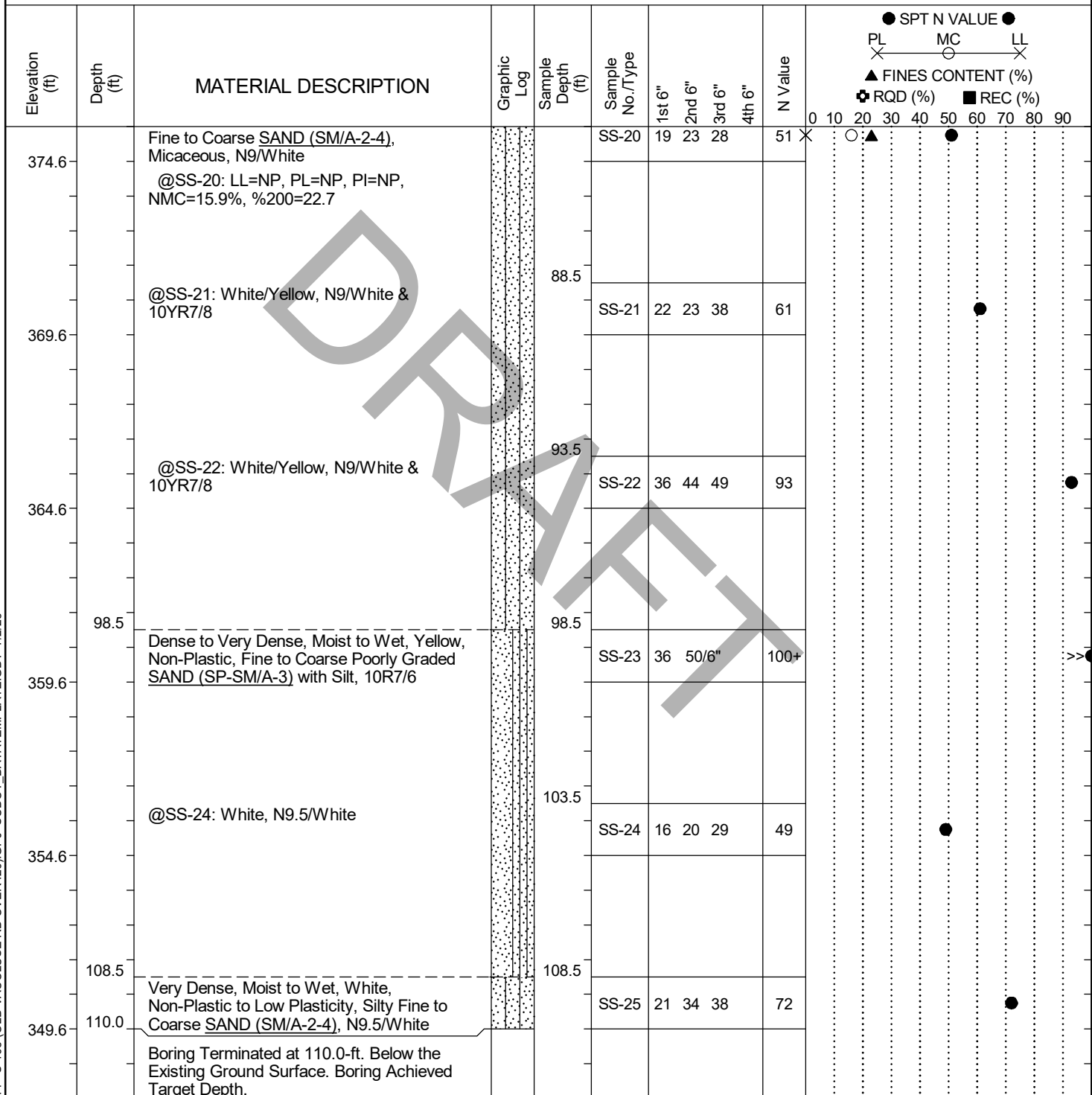
## LEGEND

Continued Next Page

SAMPLER TYPE		DRILLING METHOD	
SS - Split Spoon	NQ - Rock Core, 1-7/8"	HSA - Hollow Stem Auger	RW - Rotary Wash
UD - Undisturbed Sample	CU - Cuttings	CFA - Continuous Flight Augers	RC - Rock Core
AWG - Rock Core, 1-1/8"	CT - Continuous Tube	DC - Driving Casing	

# SCDOT Soil Test Log

Project ID: P044879				County: Aiken		Boring No.: B-1/DH-1	
Site Description: Old Vaucluse Road Emergency Bridge Replacement			Route: S-105				
Eng./Geo.: B. Vogel		Boring Location: N/A		Offset: N/A		Alignment: Existing	
Elev.: 459.6 ft	Latitude: 33.62058776		Longitude: -81.82373431		Date Started: 6/16/2025		
Total Depth: 110 ft		Soil Depth: 110 ft		Core Depth: N/A ft		Date Completed: 6/17/2025	
Bore Hole Diameter (in): 3.0		Sampler Configuration		Liner Required: Y (N)		Liner Used: Y (N)	
Drill Machine: CME 550X		Drill Method: RW		Hammer Type: Automatic		Energy Ratio: 81.2%	
Core Size: N/A		Driller: C. Taylor		Groundwater: TOB NR		24HR NR	

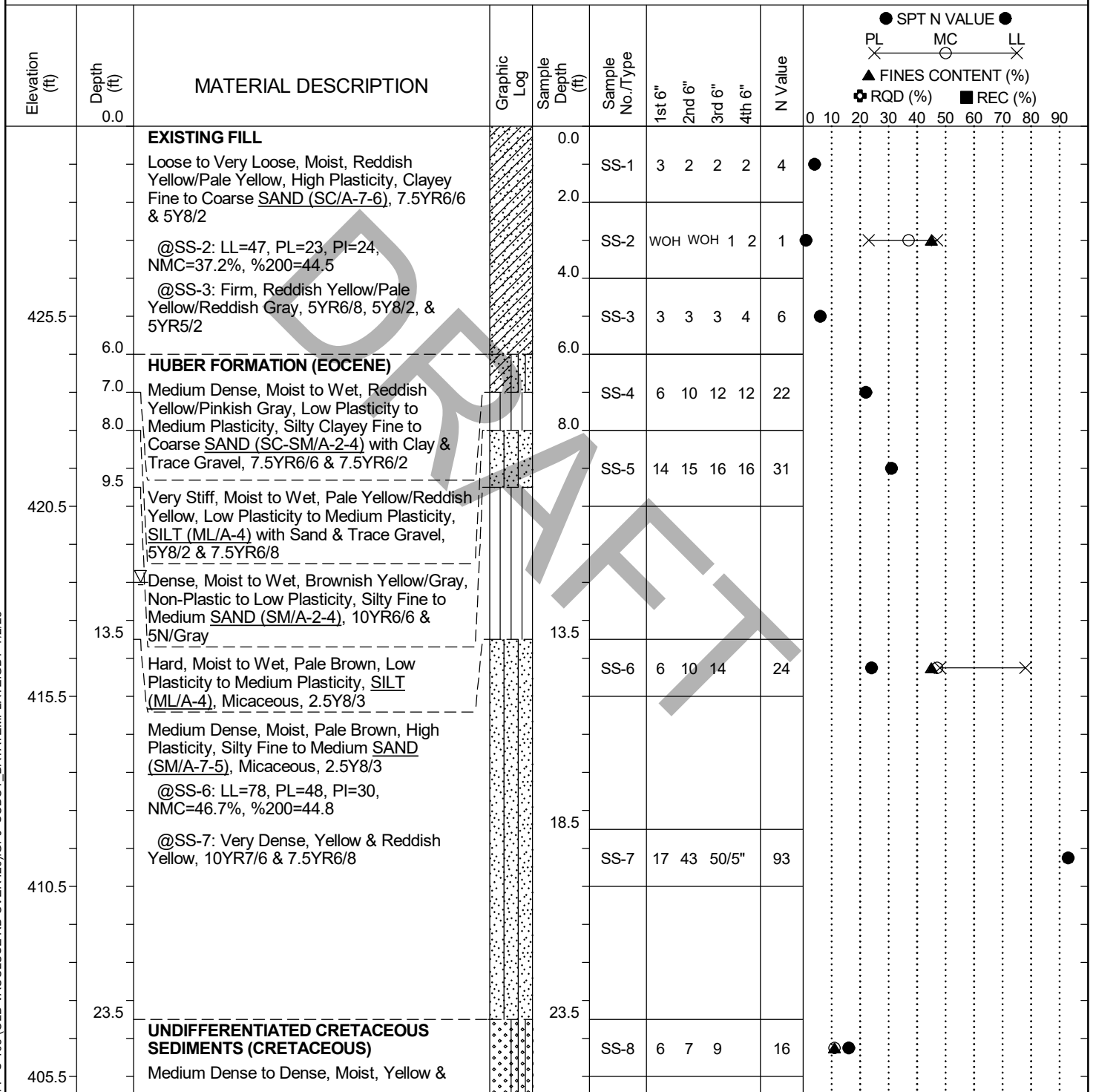


## LEGEND

SAMPLER TYPE		DRILLING METHOD	
SS	- Split Spoon	HSA	- Hollow Stem Auger
UD	- Undisturbed Sample	CFA	- Continuous Flight Augers
AWG	- Rock Core, 1-1/8"	DC	- Driving Casing
NQ	- Rock Core, 1-7/8"	RW	- Rotary Wash
CU	- Cuttings	RC	- Rock Core
CT	- Continuous Tube		

# SCDOT Soil Test Log

<b>Project ID:</b>	P044879	<b>County:</b>	Aiken	<b>Boring No.:</b>	B-2
<b>Site Description:</b>	Old Vaucluse Road Emergency Bridge Replacement			<b>Route:</b>	S-105
<b>Eng./Geo.:</b>	B. Vogel	<b>Boring Location:</b>	N/A	<b>Offset:</b>	N/A
<b>Elev.:</b>	430.5 ft	<b>Latitude:</b>	33.62090809	<b>Longitude:</b>	-81.82409175
<b>Date Started:</b>	6/20/2025				
<b>Total Depth:</b>	100 ft	<b>Soil Depth:</b>	100 ft	<b>Core Depth:</b>	N/A ft
<b>Date Completed:</b>	6/20/2025				
<b>Bore Hole Diameter (in):</b>	3.0	<b>Sampler Configuration</b>	<b>Liner Required:</b> Y (N)		<b>Liner Used:</b> Y (N)
<b>Drill Machine:</b>	CME 550X	<b>Drill Method:</b>	RW	<b>Hammer Type:</b>	Automatic
<b>Energy Ratio:</b>	81.2%				
<b>Core Size:</b>	N/A	<b>Driller:</b>	C. Taylor	<b>Groundwater:</b>	TOB 12(cave@22) 24HR NR



## LEGEND

Continued Next Page

SAMPLER TYPE		DRILLING METHOD	
SS - Split Spoon	NQ - Rock Core, 1-7/8"	HSA - Hollow Stem Auger	RW - Rotary Wash
UD - Undisturbed Sample	CU - Cuttings	CFA - Continuous Flight Augers	RC - Rock Core
AWG - Rock Core, 1-1/8"	CT - Continuous Tube	DC - Driving Casing	

# SCDOT Soil Test Log

<b>Project ID:</b>	P044879	<b>County:</b>	Aiken	<b>Boring No.:</b>	B-2
<b>Site Description:</b>	Old Vaucluse Road Emergency Bridge Replacement			<b>Route:</b>	S-105
<b>Eng./Geo.:</b>	B. Vogel	<b>Boring Location:</b>	N/A	<b>Offset:</b>	N/A
<b>Elev.:</b>	430.5 ft	<b>Latitude:</b>	33.62090809	<b>Longitude:</b>	-81.82409175
<b>Date Started:</b>	6/20/2025				
<b>Total Depth:</b>	100 ft	<b>Soil Depth:</b>	100 ft	<b>Core Depth:</b>	N/A ft
<b>Date Completed:</b>	6/20/2025				
<b>Bore Hole Diameter (in):</b>	3.0	<b>Sampler Configuration</b>	<b>Liner Required:</b> Y (N)		<b>Liner Used:</b> Y (N)
<b>Drill Machine:</b>	CME 550X	<b>Drill Method:</b>	RW	<b>Hammer Type:</b>	Automatic
<b>Energy Ratio:</b>	81.2%				
<b>Core Size:</b>	N/A	<b>Driller:</b>	C. Taylor	<b>Groundwater:</b>	TOB 12(cave@22) 24HR NR

Elevation (ft)	Depth (ft)	MATERIAL DESCRIPTION	Graphic Log	Sample Depth (ft)	Sample No./Type	1st 6"	2nd 6"	3rd 6"	4th 6"	N Value	<div> ● SPT N VALUE ●  PL X MC X LL X  ▲ FINES CONTENT (%)  ⊕ RQD (%) ■ REC (%) </div>
400.5	28.5	Reddish Yellow, Non-Plastic, Fine to Coarse Well-Graded <u>SAND (SW-SM/A-1-b)</u> with Silt, 10YR7/6 & 7.5YR6/8 @SS-8: NMC=10.7%, %200=10.7  @SS-9: Yellow/White, 10YR7/8 & 9.5N/White			SS-9	11	16	19		35	
395.5	33.5	Medium Dense, Moist, Reddish Yellow/White, Non-Plastic, Fine to Coarse Poorly Graded <u>SAND (SP-SM/A-3)</u> with Silt, 7.5YR6/8 & 9.5N/White @SS-10: LL=NP, PL=NP, PI=NP, NMC=12.0%, %200=8.6		33.5	SS-10	9	15	13		28	△
390.5	38.5	Dense to Very Dense, Moist, White, Non-Plastic, Silty Fine <u>SAND (SM/A-2-4)</u> , Micaceous, 9N/White		38.5	SS-11	16	18	22		40	
385.5	43.5	@SS-12: Fine to Medium Sand Particles, Decreased Presence of Mica LL=NP, PL=NP, PI=NP, NMC=18.3%, %200=16.3		43.5	SS-12	18	24	36		60	△
380.5	48.5	Very Dense to Dense, Moist, White, Non-Plastic to Low Plasticity, Silty Clayey Fine to Medium <u>SAND (SC-SM/A-2-4)</u> , 9N/White		48.5	SS-13	23	30	42		72	

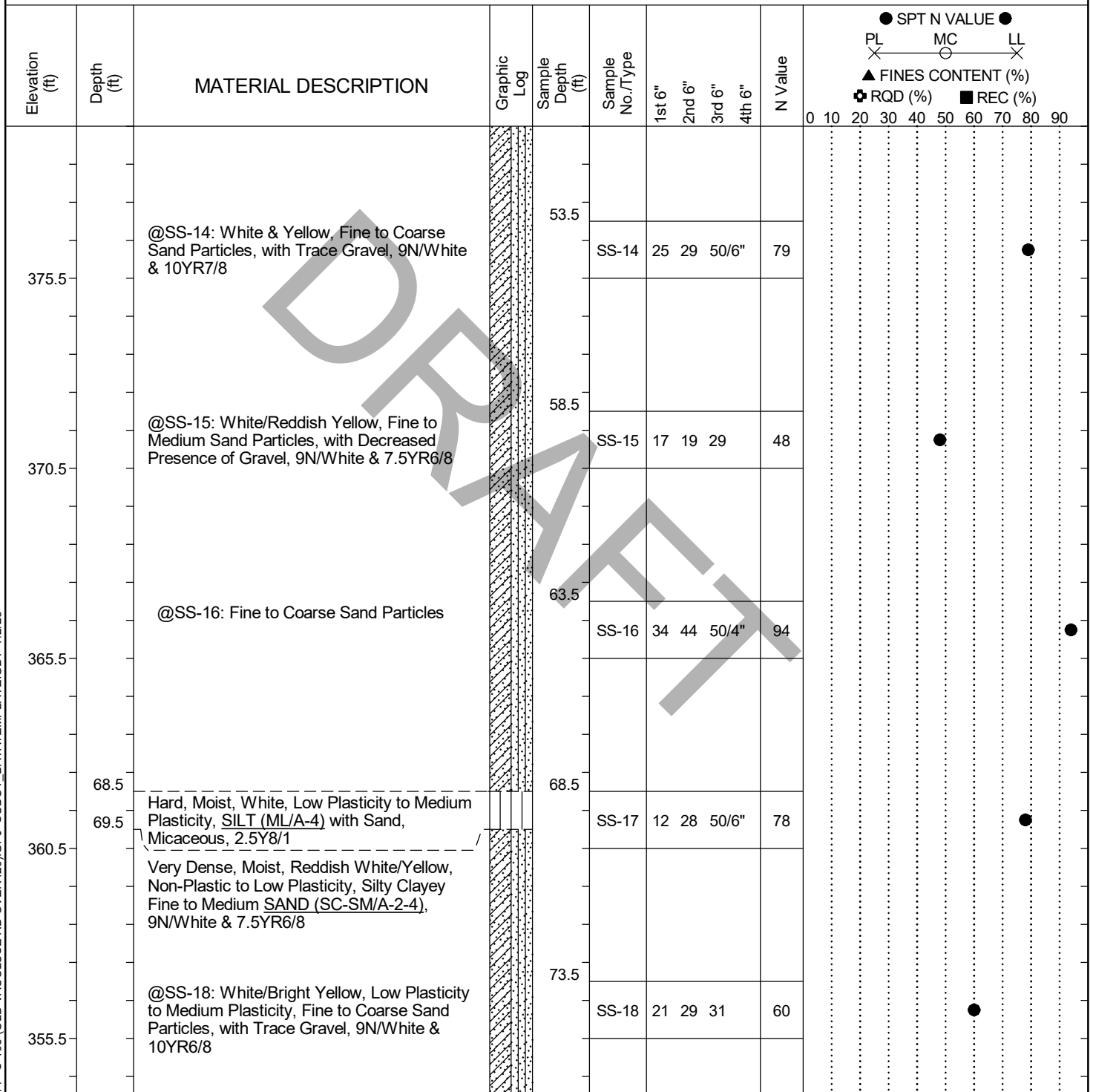
## LEGEND

Continued Next Page

SAMPLER TYPE		DRILLING METHOD	
SS - Split Spoon	NQ - Rock Core, 1-7/8"	HSA - Hollow Stem Auger	RW - Rotary Wash
UD - Undisturbed Sample	CU - Cuttings	CFA - Continuous Flight Augers	RC - Rock Core
AWG - Rock Core, 1-1/8"	CT - Continuous Tube	DC - Driving Casing	

# SCDOT Soil Test Log

Project ID: P044879				County: Aiken		Boring No.: B-2		
Site Description:		Old Vacluse Road Emergency Bridge Replacement					Route: S-105	
Eng./Geo.: B. Vogel		Boring Location: N/A		Offset: N/A		Alignment: Existing		
Elev.:	430.5 ft	Latitude:	33.62090809	Longitude:	-81.82409175	Date Started: 6/20/2025		
Total Depth: 100 ft		Soil Depth: 100 ft		Core Depth: N/A ft		Date Completed: 6/20/2025		
Bore Hole Diameter (in): 3.0		Sampler Configuration		Liner Required: Y ⓘ		Liner Used: Y ⓘ		
Drill Machine: CME 550X		Drill Method: RW		Hammer Type: Automatic		Energy Ratio: 81.2%		
Core Size: N/A		Driller: C. Taylor		Groundwater: TOB 12(cave@22)		24HR NR		



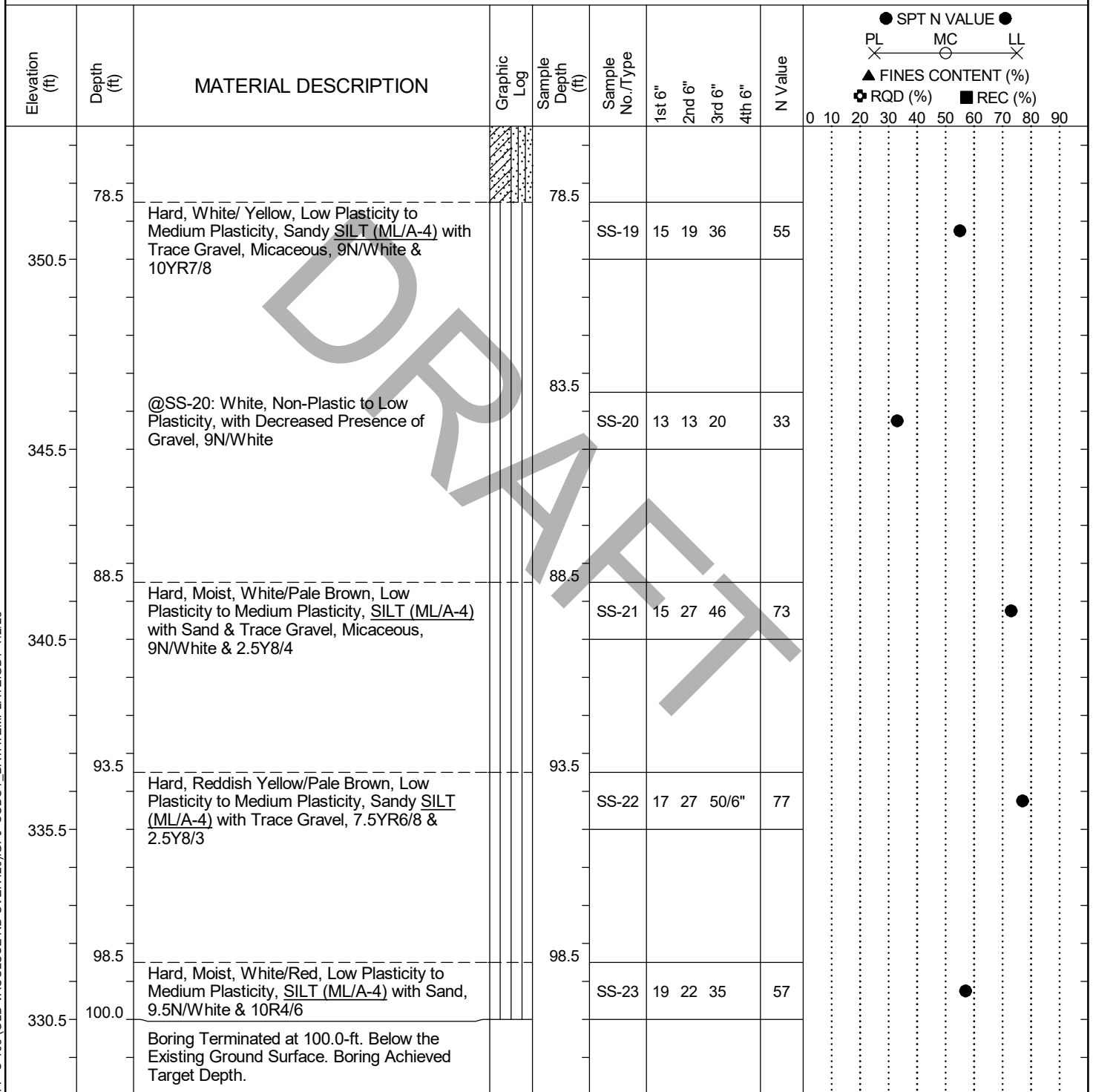
## LEGEND

Continued Next Page

SAMPLER TYPE		DRILLING METHOD	
SS - Split Spoon	NQ - Rock Core, 1-7/8"	HSA - Hollow Stem Auger	RW - Rotary Wash
UD - Undisturbed Sample	CU - Cuttings	CFA - Continuous Flight Augers	RC - Rock Core
AWG - Rock Core, 1-1/8"	CT - Continuous Tube	DC - Driving Casing	

# SCDOT Soil Test Log

<b>Project ID:</b>	P044879	<b>County:</b>	Aiken	<b>Boring No.:</b>	B-2
<b>Site Description:</b>	Old Vaucluse Road Emergency Bridge Replacement			<b>Route:</b>	S-105
<b>Eng./Geo.:</b>	B. Vogel	<b>Boring Location:</b>	N/A	<b>Offset:</b>	N/A
<b>Elev.:</b>	430.5 ft	<b>Latitude:</b>	33.62090809	<b>Longitude:</b>	-81.82409175
<b>Date Started:</b>	6/20/2025				
<b>Total Depth:</b>	100 ft	<b>Soil Depth:</b>	100 ft	<b>Core Depth:</b>	N/A ft
<b>Date Completed:</b>	6/20/2025				
<b>Bore Hole Diameter (in):</b>	3.0	<b>Sampler Configuration</b>		<b>Liner Required:</b>	Y (N)
<b>Liner Used:</b>	Y (N)				
<b>Drill Machine:</b>	CME 550X	<b>Drill Method:</b>	RW	<b>Hammer Type:</b>	Automatic
<b>Energy Ratio:</b>	81.2%				
<b>Core Size:</b>	N/A	<b>Driller:</b>	C. Taylor	<b>Groundwater:</b>	TOB 12(cave@22) 24HR NR



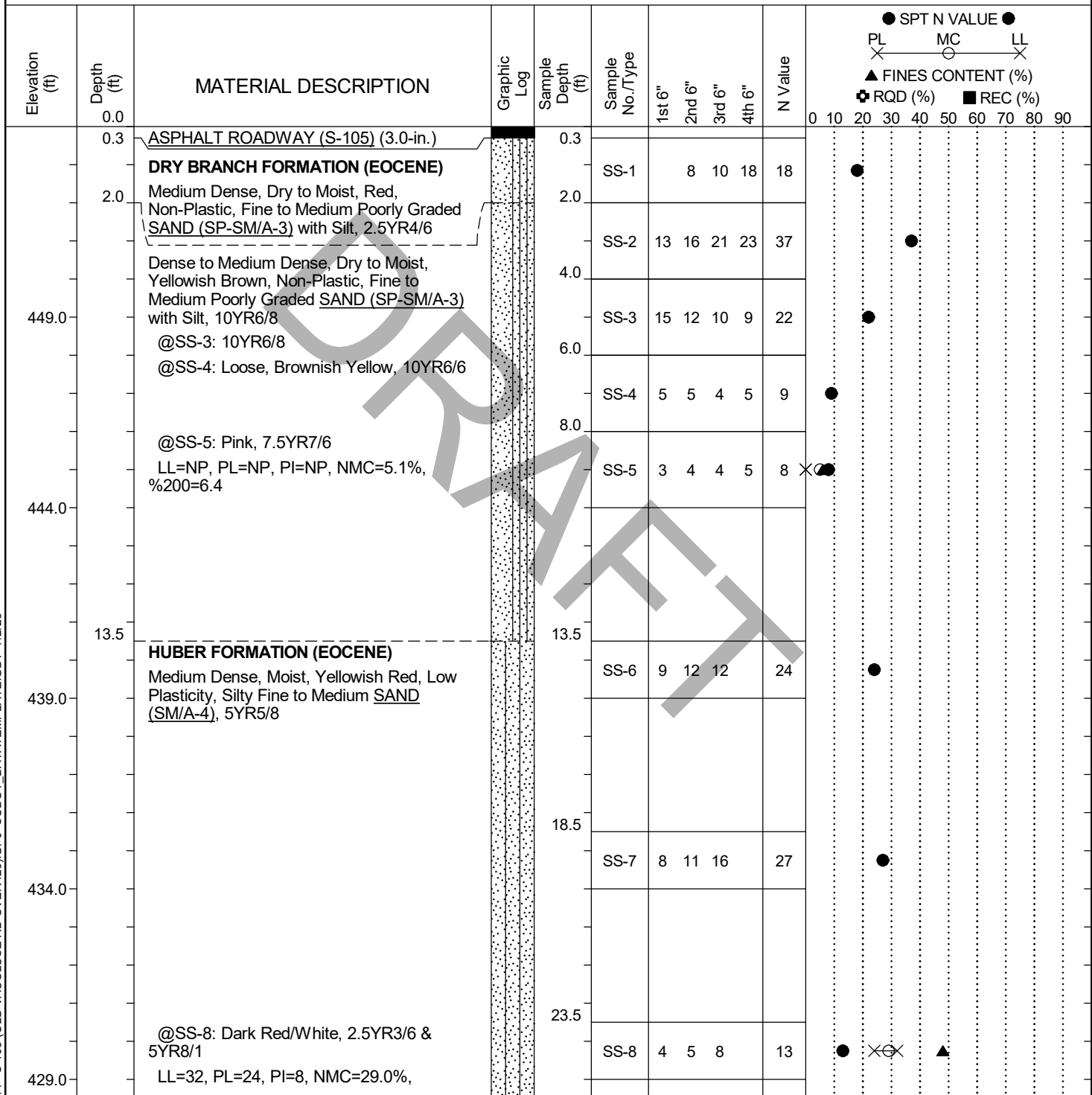
## LEGEND

SAMPLER TYPE		DRILLING METHOD	
SS - Split Spoon	NQ - Rock Core, 1-7/8"	HSA - Hollow Stem Auger	RW - Rotary Wash
UD - Undisturbed Sample	CU - Cuttings	CFA - Continuous Flight Augers	RC - Rock Core
AWG - Rock Core, 1-1/8"	CT - Continuous Tube	DC - Driving Casing	



# SCDOT Soil Test Log

<b>Project ID:</b>	P044879	<b>County:</b>	Aiken	<b>Boring No.:</b>	B-3
<b>Site Description:</b>	Old Vaucluse Road Emergency Bridge Replacement			<b>Route:</b>	S-105
<b>Eng./Geo.:</b>	G. Cantelle	<b>Boring Location:</b>	N/A	<b>Offset:</b>	N/A
<b>Elev.:</b>	454.0 ft	<b>Latitude:</b>	33.62122031	<b>Longitude:</b>	-81.82443248
<b>Date Started:</b>	6/19/2025				
<b>Total Depth:</b>	100 ft	<b>Soil Depth:</b>	100 ft	<b>Core Depth:</b>	N/A ft
<b>Date Completed:</b>	6/19/2025				
<b>Bore Hole Diameter (in):</b>	3.0	<b>Sampler Configuration</b>	<b>Liner Required:</b> Y (N)		<b>Liner Used:</b> Y (N)
<b>Drill Machine:</b>	CME 550X	<b>Drill Method:</b>	RW	<b>Hammer Type:</b>	Automatic
<b>Energy Ratio:</b>	81.2%				
<b>Core Size:</b>	N/A	<b>Driller:</b>	C. Taylor	<b>Groundwater:</b>	TOB 49(cave@33.7)
<b>24HR</b>	NR				



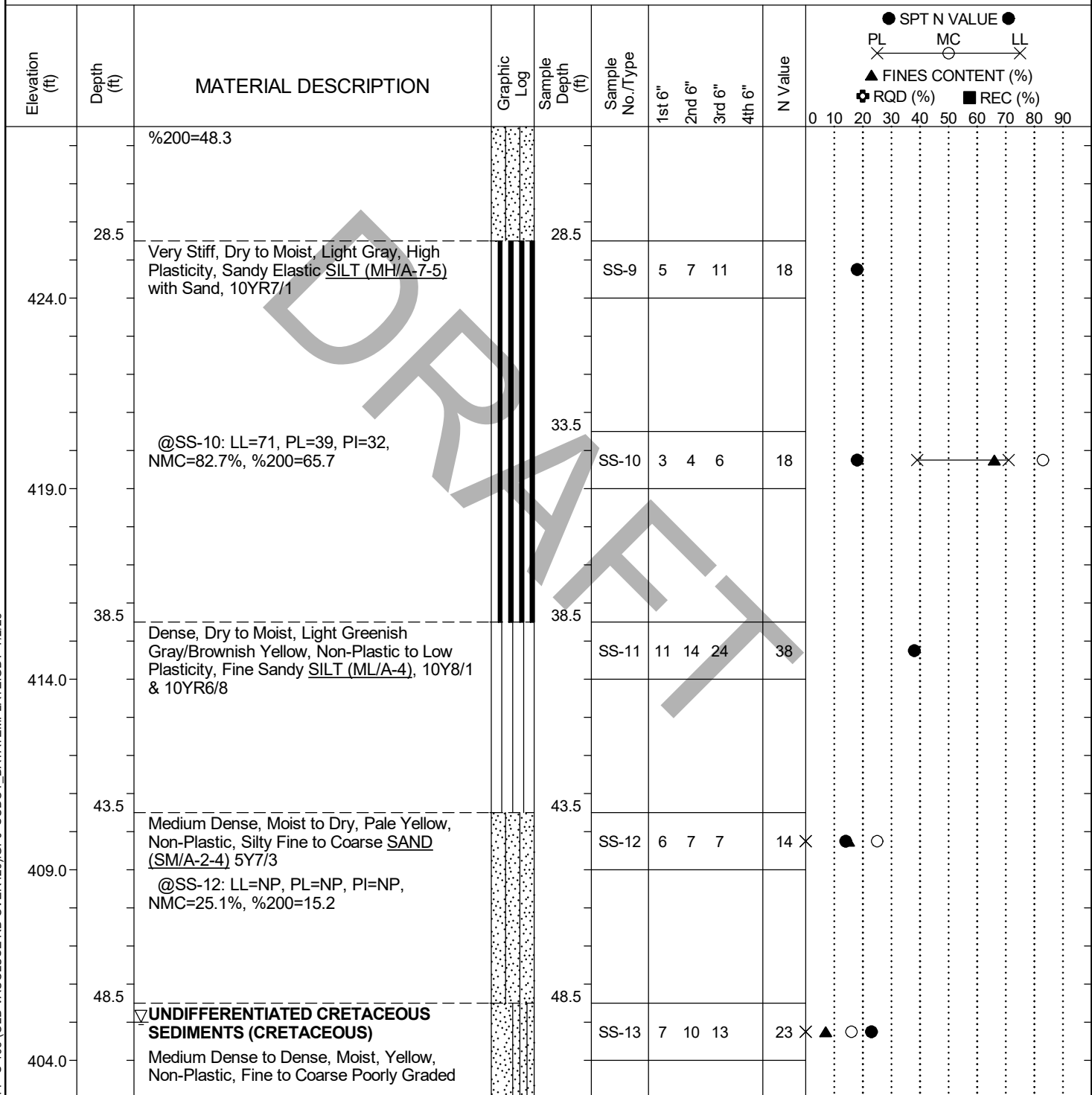
## LEGEND

Continued Next Page

SAMPLER TYPE		DRILLING METHOD	
SS - Split Spoon	NQ - Rock Core, 1-7/8"	HSA - Hollow Stem Auger	RW - Rotary Wash
UD - Undisturbed Sample	CU - Cuttings	CFA - Continuous Flight Augers	RC - Rock Core
AWG - Rock Core, 1-1/8"	CT - Continuous Tube	DC - Driving Casing	

# SCDOT Soil Test Log

<b>Project ID:</b>	P044879				<b>County:</b>	Aiken		<b>Boring No.:</b>	B-3		
<b>Site Description:</b>		Old Vacluse Road Emergency Bridge Replacement						<b>Route:</b>	S-105		
<b>Eng./Geo.:</b>	G. Cantelle		<b>Boring Location:</b>		N/A		<b>Offset:</b>	N/A		<b>Alignment:</b>	Existing
<b>Elev.:</b>	454.0 ft		<b>Latitude:</b>	33.62122031		<b>Longitude:</b>	-81.82443248		<b>Date Started:</b>	6/19/2025	
<b>Total Depth:</b>	100 ft		<b>Soil Depth:</b>	100 ft		<b>Core Depth:</b>	N/A ft		<b>Date Completed:</b>	6/19/2025	
<b>Bore Hole Diameter (in):</b>			3.0		<b>Sampler Configuration</b>		<b>Liner Required:</b>	Y (N)		<b>Liner Used:</b>	Y (N)
<b>Drill Machine:</b>	CME 550X		<b>Drill Method:</b>	RW		<b>Hammer Type:</b>	Automatic		<b>Energy Ratio:</b>	81.2%	
<b>Core Size:</b>	N/A		<b>Driller:</b>	C. Taylor		<b>Groundwater:</b>	<b>TOB</b>	49(cave@33.7)		<b>24HR</b>	NR



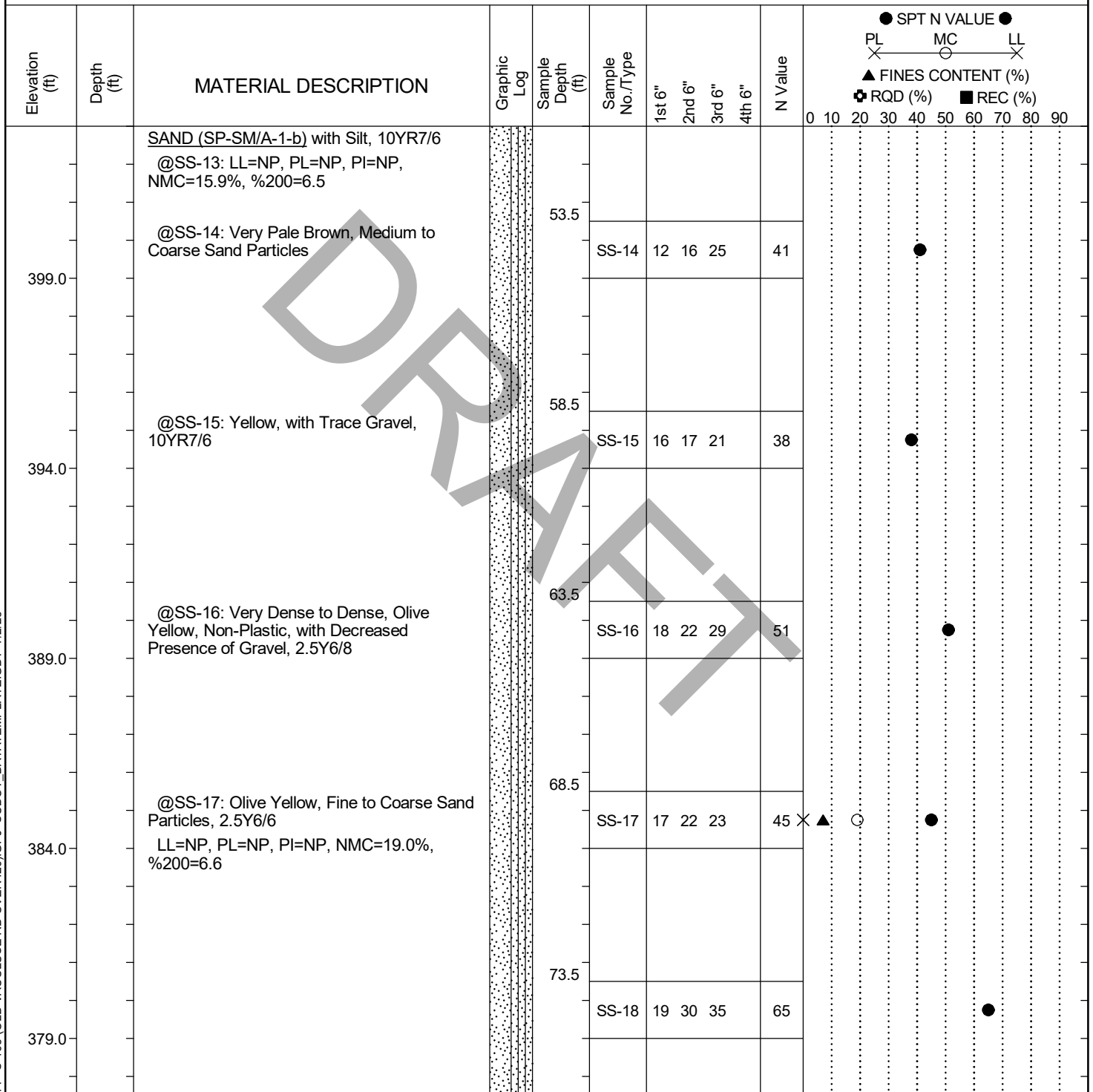
## LEGEND

Continued Next Page

SAMPLER TYPE		DRILLING METHOD	
SS - Split Spoon	NQ - Rock Core, 1-7/8"	HSA - Hollow Stem Auger	RW - Rotary Wash
UD - Undisturbed Sample	CU - Cuttings	CFA - Continuous Flight Augers	RC - Rock Core
AWG - Rock Core, 1-1/8"	CT - Continuous Tube	DC - Driving Casing	

# SCDOT Soil Test Log

<b>Project ID:</b>	P044879	<b>County:</b>	Aiken	<b>Boring No.:</b>	B-3
<b>Site Description:</b>	Old Vaucluse Road Emergency Bridge Replacement			<b>Route:</b>	S-105
<b>Eng./Geo.:</b>	G. Cantelle	<b>Boring Location:</b>	N/A	<b>Offset:</b>	N/A
<b>Elev.:</b>	454.0 ft	<b>Latitude:</b>	33.62122031	<b>Longitude:</b>	-81.82443248
<b>Date Started:</b>	6/19/2025				
<b>Total Depth:</b>	100 ft	<b>Soil Depth:</b>	100 ft	<b>Core Depth:</b>	N/A ft
<b>Date Completed:</b>	6/19/2025				
<b>Bore Hole Diameter (in):</b>	3.0	<b>Sampler Configuration</b>	<b>Liner Required:</b> Y (N)		<b>Liner Used:</b> Y (N)
<b>Drill Machine:</b>	CME 550X	<b>Drill Method:</b>	RW	<b>Hammer Type:</b>	Automatic
<b>Energy Ratio:</b>	81.2%				
<b>Core Size:</b>	N/A	<b>Driller:</b>	C. Taylor	<b>Groundwater:</b>	TOB 49(cave@33.7)
<b>24HR</b>	NR				



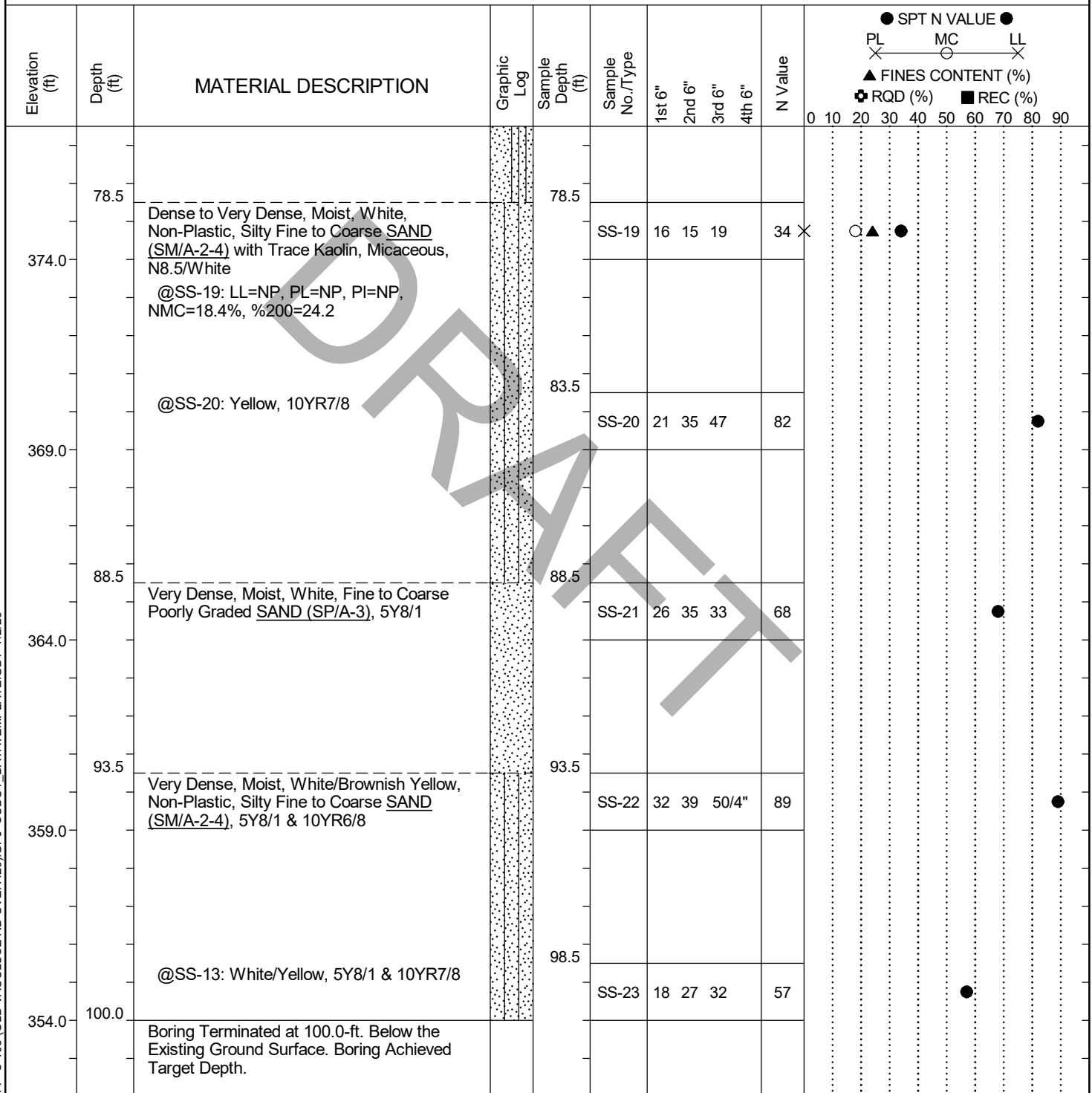
## LEGEND

Continued Next Page

SAMPLER TYPE		DRILLING METHOD	
SS - Split Spoon	NQ - Rock Core, 1-7/8"	HSA - Hollow Stem Auger	RW - Rotary Wash
UD - Undisturbed Sample	CU - Cuttings	CFA - Continuous Flight Augers	RC - Rock Core
AWG - Rock Core, 1-1/8"	CT - Continuous Tube	DC - Driving Casing	

# SCDOT Soil Test Log

<b>Project ID:</b>	P044879	<b>County:</b>	Aiken	<b>Boring No.:</b>	B-3
<b>Site Description:</b>	Old Vaucluse Road Emergency Bridge Replacement			<b>Route:</b>	S-105
<b>Eng./Geo.:</b>	G. Cantelle	<b>Boring Location:</b>	N/A	<b>Offset:</b>	N/A
<b>Elev.:</b>	454.0 ft	<b>Latitude:</b>	33.62122031	<b>Longitude:</b>	-81.82443248
<b>Date Started:</b>	6/19/2025				
<b>Total Depth:</b>	100 ft	<b>Soil Depth:</b>	100 ft	<b>Core Depth:</b>	N/A ft
<b>Date Completed:</b>	6/19/2025				
<b>Bore Hole Diameter (in):</b>	3.0	<b>Sampler Configuration</b>	<b>Liner Required:</b> Y (N)		<b>Liner Used:</b> Y (N)
<b>Drill Machine:</b>	CME 550X	<b>Drill Method:</b>	RW	<b>Hammer Type:</b>	Automatic
<b>Energy Ratio:</b>	81.2%				
<b>Core Size:</b>	N/A	<b>Driller:</b>	C. Taylor	<b>Groundwater:</b>	TOB 49(cave@33.7)
<b>24HR</b>	NR				

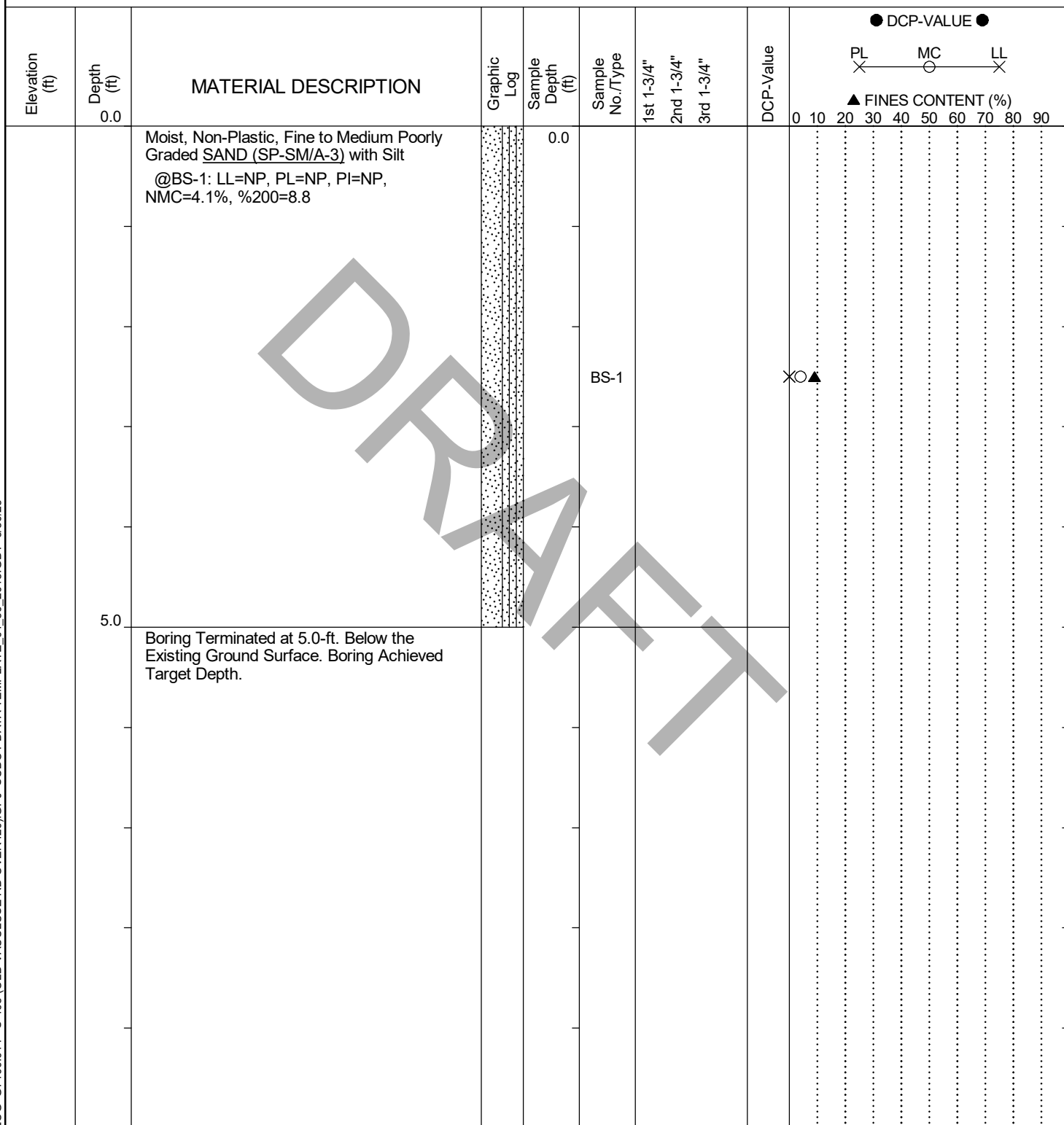


## LEGEND

SAMPLER TYPE		DRILLING METHOD	
SS	- Split Spoon	NQ	- Rock Core, 1-7/8"
UD	- Undisturbed Sample	CU	- Cuttings
AWG	- Rock Core, 1-1/8"	CT	- Continuous Tube
HSA	- Hollow Stem Auger	RW	- Rotary Wash
CFA	- Continuous Flight Augers	RC	- Rock Core
DC	- Driving Casing		

# SCDOT Manual Auger Log

<b>Project ID:</b> P044879		<b>County:</b> Aiken		<b>Boring No.:</b> BS-1 @P-1/P-2/F	
<b>Site Description:</b> Old Vacluse Road Emergency Bridge Replacement				<b>Route:</b> S-105	
<b>Driller:</b> L. Guempel		<b>Boring Location:</b> N/A		<b>Offset:</b> N/A	
<b>Elev.:</b> ft		<b>Latitude:</b>		<b>Date Started:</b> 6/18/2025	
<b>Total Depth:</b> 5 ft		<b>Groundwater:</b> TOB		<b>Date Completed:</b> 6/18/2025	
<b>Dynamic Cone Penetrometer Test Procedure:</b>		ASTM D6951			

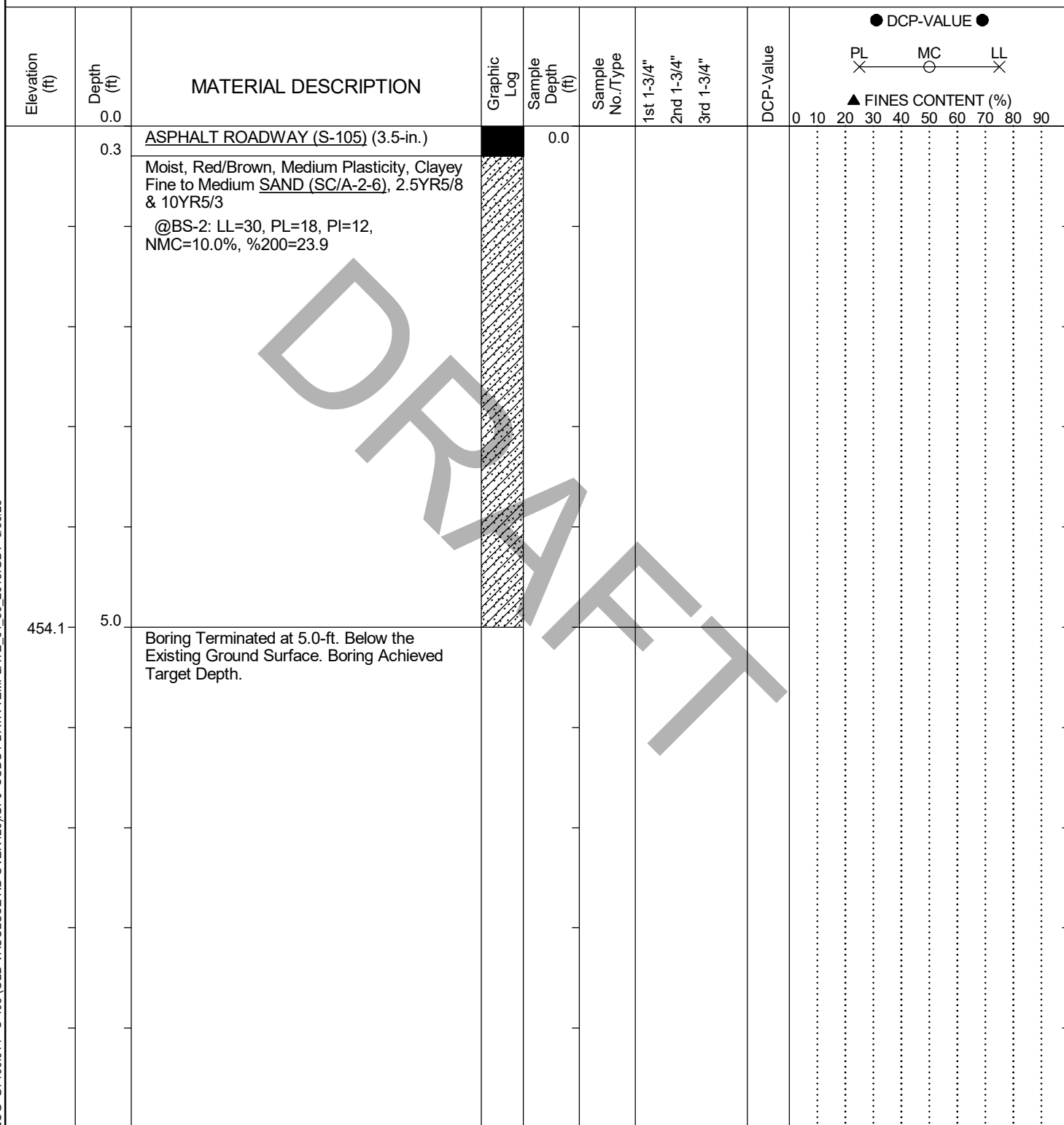


## LEGEND

SAMPLER TYPE			DRILLING METHOD	
SS - Split Spoon	DCP - Dynamic Cone Penetrometer		HSA - Hollow Stem Auger	RW - Rotary Wash
UD - Undisturbed Sample	CU - Cuttings		CFA - Continuous Flight Augers	RC - Rock Core
AWG - Rock Core, 1-1/8"	CT - Continuous Tube		DC - Driving Casing	

# SCDOT Manual Auger Log

<b>Project ID:</b>	P044879	<b>County:</b>	Aiken	<b>Boring No.:</b>	BS-2 @B-1/DH-1
<b>Site Description:</b>	Old Vaucluse Road Emergency Bridge Replacement			<b>Route:</b>	S-105
<b>Driller:</b>	C. Taylor	<b>Boring Location:</b>	N/A	<b>Offset:</b>	N/A
<b>Elev.:</b>	459.1 ft	<b>Latitude:</b>	33.62061669	<b>Longitude:</b>	-81.82369427
<b>Total Depth:</b>	5 ft	<b>Groundwater:</b>	TOB	<b>Date Started:</b>	6/17/2025
<b>Dynamic Cone Penetrometer Test Procedure:</b>	ASTM D6951				



## LEGEND

SAMPLER TYPE			DRILLING METHOD	
SS - Split Spoon	DCP - Dynamic Cone Penetrometer	HSA - Hollow Stem Auger	RW - Rotary Wash	
UD - Undisturbed Sample	CU - Cuttings	CFA - Continuous Flight Augers	RC - Rock Core	
AWG - Rock Core, 1-1/8"	CT - Continuous Tube	DC - Driving Casing		

# SCDOT Manual Auger Log

<b>Project ID:</b>	P044879	<b>County:</b>	Aiken	<b>Boring No.:</b>	P-1
<b>Site Description:</b>	Old Vaucluse Road Emergency Bridge Replacement			<b>Route:</b>	S-105
<b>Driller:</b>	C. Taylor	<b>Boring Location:</b>	N/A	<b>Offset:</b>	N/A
<b>Elev.:</b>	464.7 ft	<b>Latitude:</b>	33.61963848	<b>Longitude:</b>	-81.82278553
<b>Date Started:</b>	6/17/2025				
<b>Total Depth:</b>	5 ft	<b>Groundwater:</b>	TOB	<b>Dry</b>	24 hr NR
<b>Date Completed:</b>	6/17/2025				
<b>Dynamic Cone Penetrometer Test Procedure:</b>			Sowers and Hedges (1966)		

Elevation (ft)	Depth (ft)	MATERIAL DESCRIPTION	Graphic Log	Sample Depth (ft)	Sample No./Type	1st 1-3/4"	2nd 1-3/4"	3rd 1-3/4"	DCP-Value	DCP-VALUE	PL	MC	LL	FINES CONTENT (%)
	0.0	ASPHALT ROADWAY (S-105) (4.0-in.)												
	0.3	Aggregate Base Course (0.5-in.)		0.4										
	0.4	Medium Dense, Moist, Yellowish Red, Low Plastic to Medium Plasticity, Silty Clayey Fine to Coarse SAND (SC-SM/A-2-4) with Trace Gravel, 5YR5/6		1.0	DS-1	12	25+		11					
		@DS-2: Yellowish Brown/Red, 10YR5/4 & 2.5YR5/6			DS-2	19	25+		11					
	2.0	Medium Dense, Moist, Yellowish Brown, Non-Plastic to Low Plasticity, Silty Fine to Coarse SAND (SM/A-2-4), 10YR5/4		2.0	DS-3	17	25+		11					
		@DS-4: Brownish Yellow, 10YR6/6		3.0	DS-4	21	25+		11					
		@DS-5: Fine to Medium sand Particles		4.0	DS-5	11	21	22	11					
	4.5			4.5	DS-6	7	11	11	11					
459.7	5.0	Boring Terminated at 5.0-ft. Below the Existing Ground Surface. Boring Achieved Target Depth.												

## LEGEND

SAMPLER TYPE		DRILLING METHOD	
SS - Split Spoon	DCP - Dynamic Cone Penetrometer	HSA - Hollow Stem Auger	RW - Rotary Wash
UD - Undisturbed Sample	CU - Cuttings	CFA - Continuous Flight Augers	RC - Rock Core
AWG - Rock Core, 1-1/8"	CT - Continuous Tube	DC - Driving Casing	

# SCDOT Manual Auger Log

<b>Project ID:</b>	P044879	<b>County:</b>	Aiken	<b>Boring No.:</b>	P-2
<b>Site Description:</b>	Old Vaocluse Road Emergency Bridge Replacement			<b>Route:</b>	S-105
<b>Driller:</b>	C. Taylor	<b>Boring Location:</b>	N/A	<b>Offset:</b>	N/A
<b>Elev.:</b>	463.6 ft	<b>Latitude:</b>	33.61996566	<b>Longitude:</b>	-81.82309043
<b>Date Started:</b>	6/17/2025				
<b>Total Depth:</b>	5 ft	<b>Groundwater:</b>	TOB	<b>Dry</b>	24 hr NR
<b>Date Completed:</b>	6/17/2025				
<b>Dynamic Cone Penetrometer Test Procedure:</b>			Sowers and Hedges (1966)		

Elevation (ft)	Depth (ft)	MATERIAL DESCRIPTION	Graphic Log	Sample Depth (ft)	Sample No./Type	1st 1-3/4"	2nd 1-3/4"	3rd 1-3/4"	DCP-Value	DCP-VALUE	PL	MC	LL	FINES CONTENT (%)
	0.0													
	0.2	ASPHALT ROADWAY (S-105) (3.0-in.)												
	0.3	Aggregate Base Course (1.0-in.)		0.4										
		Medium Dense, Moist, Yellowish Red, Low Plasticity to Medium Plasticity, Silty Clayey Fine to Medium SAND (SC-SM/A-2-4), 5YR5/6		1.0	DS-1	16	25+		11					
	1.3	@DS-2: Fine to Coarse Sand Particles with Trace Gravel			DS-2	22	25+		11					
		Medium Dense, Moist, Brown, Non-Plastic to Low Plasticity, Silty Fine to Coarse SAND (SM/A-2-4), 7.5YR5/2		2.0	DS-3	9	25+		11					
		@DS-3: Brownish Yellow, 10YR6/6												
		@DS-4: Reddish Brown, 2.5YR5/3		3.0	DS-4	12	19	23	11					
		@DS-5: Yellowish Brown, with Trace Gravel, 10YR5/4		4.0	DS-5	9	22	25+	11					
	4.5				DS-6	9	10	12	11					
458.6	5.0	Boring Terminated at 5.0-ft. Below the Existing Ground Surface. Boring Achieved Target Depth.												

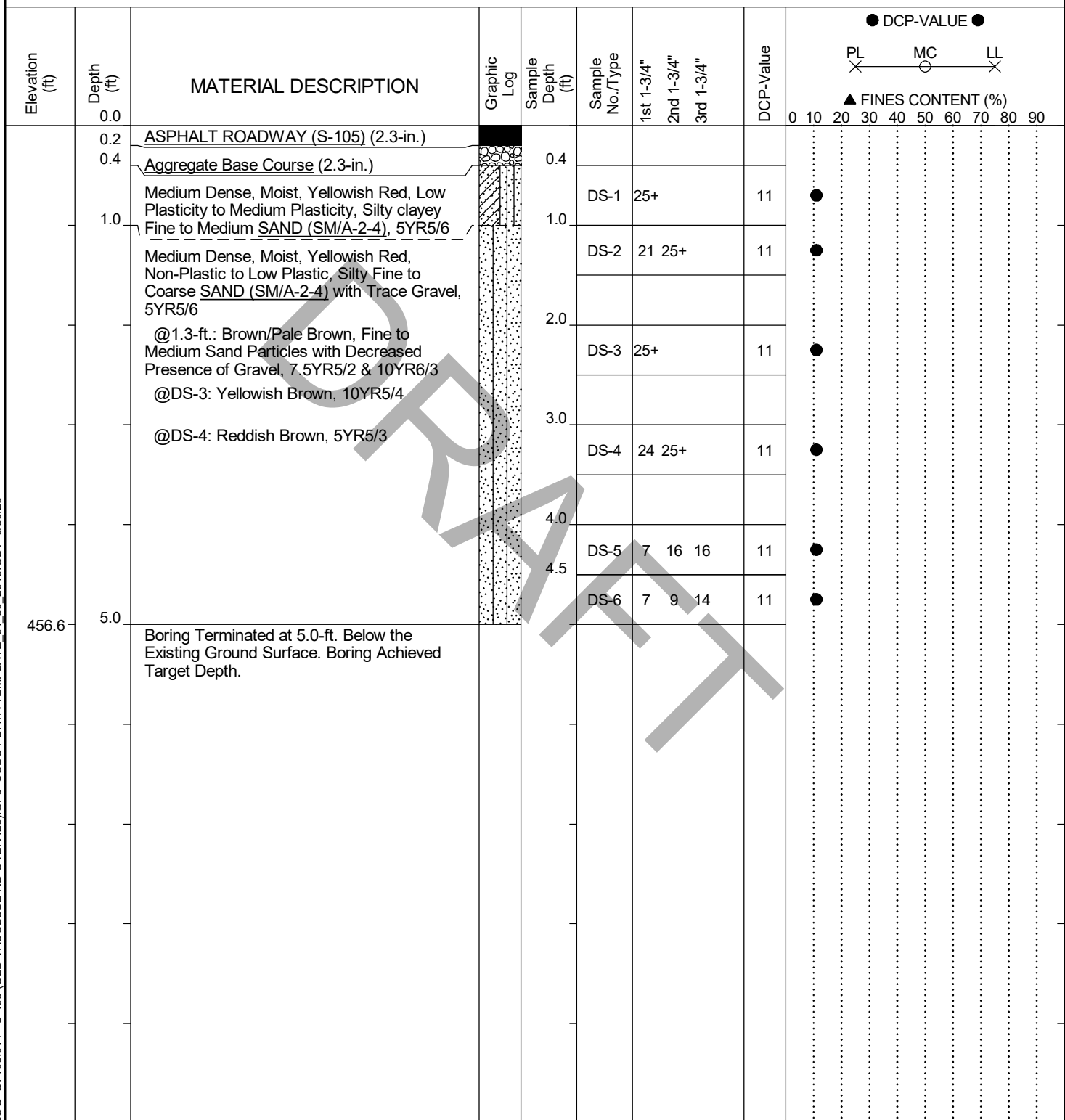
## LEGEND

SAMPLER TYPE		DRILLING METHOD	
SS - Split Spoon	DCP Dynamic Cone Penetrometer	HSA - Hollow Stem Auger	RW - Rotary Wash
UD - Undisturbed Sample	CU - Cuttings	CFA - Continuous Flight Augers	RC - Rock Core
AWG - Rock Core, 1-1/8"	CT - Continuous Tube	DC - Driving Casing	



# SCDOT Manual Auger Log

<b>Project ID:</b>	P044879	<b>County:</b>	Aiken	<b>Boring No.:</b>	P-3
<b>Site Description:</b>	Old Vaucluse Road Emergency Bridge Replacement			<b>Route:</b>	S-105
<b>Driller:</b>	C. Taylor	<b>Boring Location:</b>	N/A	<b>Offset:</b>	N/A
<b>Elev.:</b>	461.6 ft	<b>Latitude:</b>	33.62025342	<b>Longitude:</b>	-81.82344356
<b>Date Started:</b>	6/17/2025				
<b>Total Depth:</b>	5 ft	<b>Groundwater:</b>	TOB	<b>Dry</b>	24 hr NR
<b>Date Completed:</b>	6/17/2025				
<b>Dynamic Cone Penetrometer Test Procedure:</b>			Sowers and Hedges (1966)		

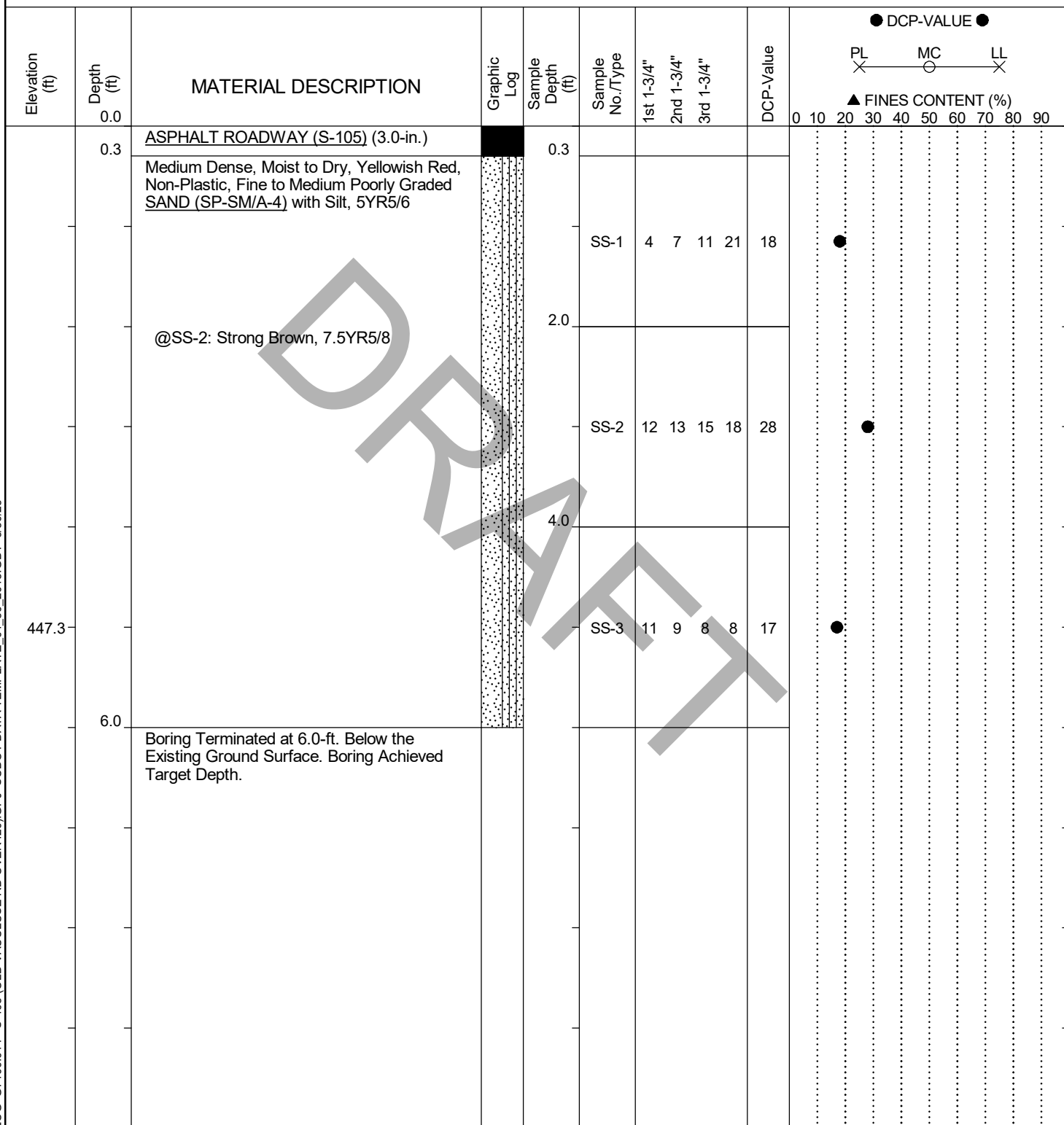


## LEGEND

SAMPLER TYPE		DRILLING METHOD	
SS - Split Spoon	DCP Dynamic Cone Penetrometer	HSA - Hollow Stem Auger	RW - Rotary Wash
UD - Undisturbed Sample	CU - Cuttings	CFA - Continuous Flight Augers	RC - Rock Core
AWG - Rock Core, 1-1/8"	CT - Continuous Tube	DC - Driving Casing	

# SCDOT Manual Auger Log

<b>Project ID:</b>	P044879	<b>County:</b>	Aiken	<b>Boring No.:</b>	P-4
<b>Site Description:</b>	Old Vaucluse Road Emergency Bridge Replacement			<b>Route:</b>	S-105
<b>Driller:</b>	L. Guempel	<b>Boring Location:</b>	N/A	<b>Offset:</b>	N/A
<b>Elev.:</b>	452.3 ft	<b>Latitude:</b>	33.62156591	<b>Longitude:</b>	-81.82472522
<b>Date Started:</b>	6/18/2025				
<b>Total Depth:</b>	6 ft	<b>Groundwater:</b>	TOB	<b>Dry</b>	24 hr NR
<b>Date Completed:</b>	6/18/2025				
<b>Dynamic Cone Penetrometer Test Procedure:</b>			Sowers and Hedges (1966)		

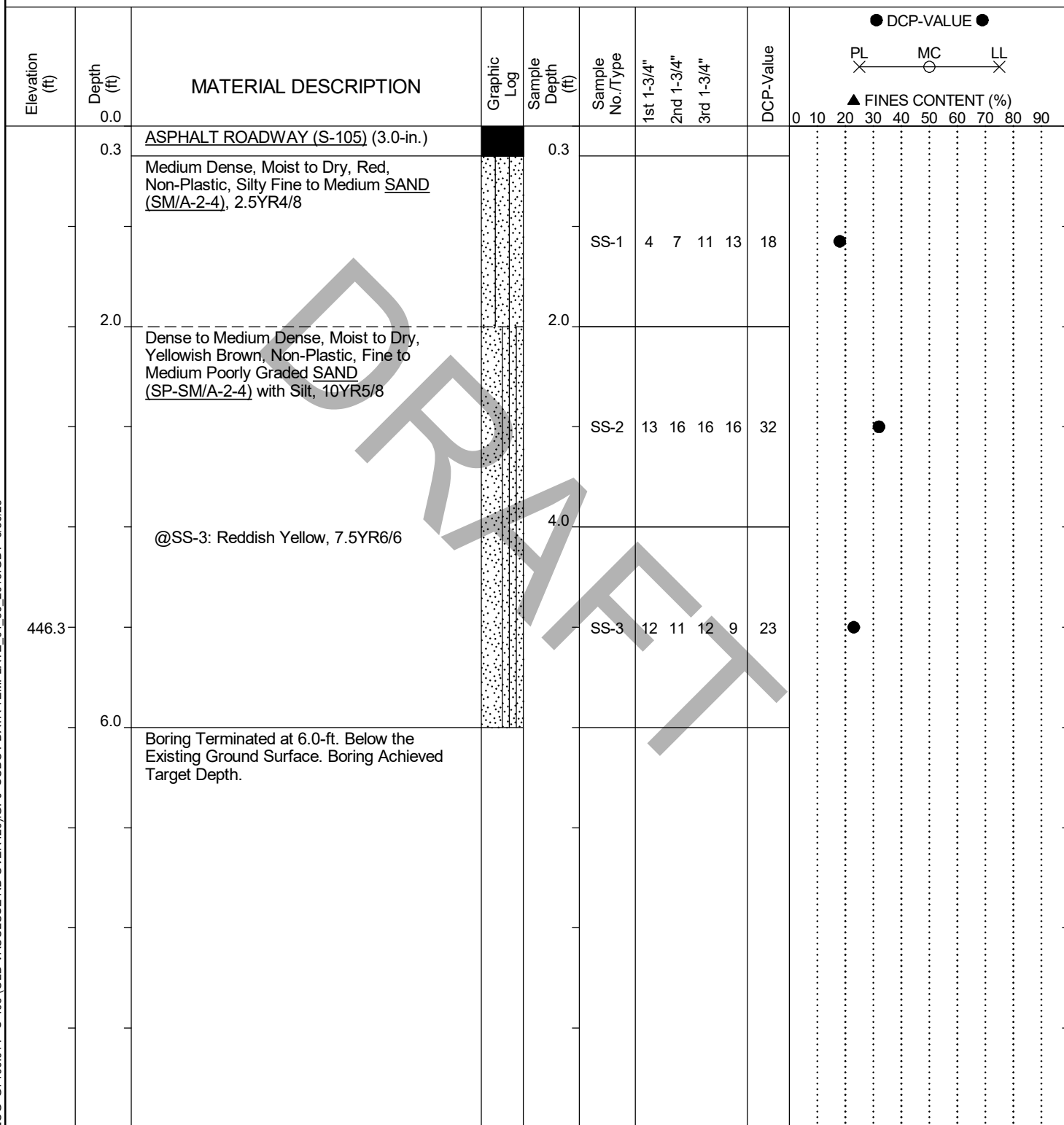


## LEGEND

SAMPLER TYPE		DRILLING METHOD	
SS - Split Spoon	DCP Dynamic Cone Penetrometer	HSA - Hollow Stem Auger	RW - Rotary Wash
UD - Undisturbed Sample	CU - Cuttings	CFA - Continuous Flight Augers	RC - Rock Core
AWG - Rock Core, 1-1/8"	CT - Continuous Tube	DC - Driving Casing	

# SCDOT Manual Auger Log

<b>Project ID:</b>	P044879	<b>County:</b>	Aiken	<b>Boring No.:</b>	P-5
<b>Site Description:</b>	Old Vaucluse Road Emergency Bridge Replacement			<b>Route:</b>	S-105
<b>Driller:</b>	L. Guempel	<b>Boring Location:</b>	N/A	<b>Offset:</b>	N/A
<b>Elev.:</b>	451.3 ft	<b>Latitude:</b>	33.62186081	<b>Longitude:</b>	-81.82507323
<b>Date Started:</b>	6/18/2025				
<b>Total Depth:</b>	6 ft	<b>Groundwater:</b>	TOB	<b>Dry</b>	24 hr NR
<b>Date Completed:</b>	6/18/2025				
<b>Dynamic Cone Penetrometer Test Procedure:</b>			Sowers and Hedges (1966)		

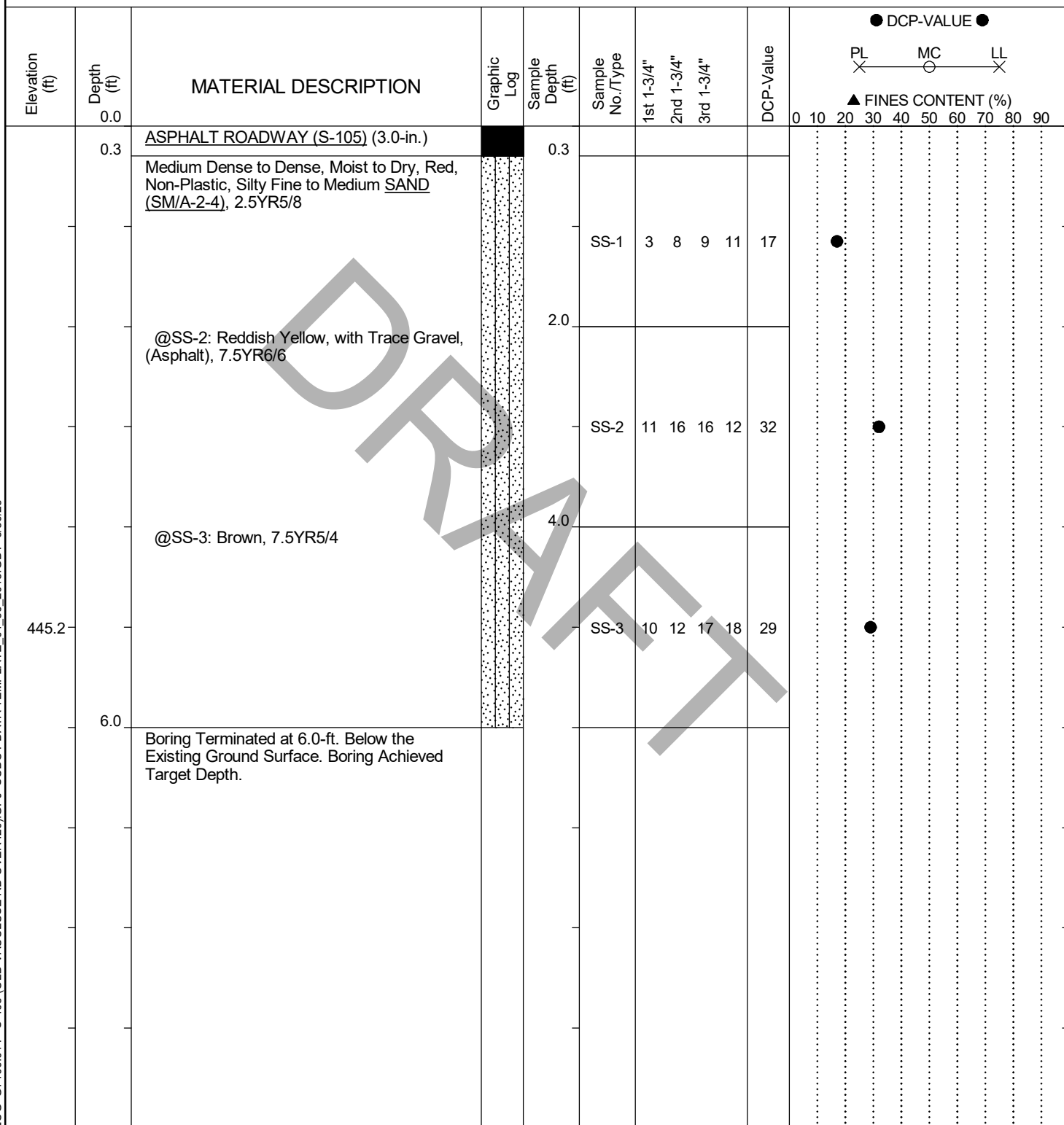


## LEGEND

SAMPLER TYPE		DRILLING METHOD	
SS - Split Spoon	DCP Dynamic Cone Penetrometer	HSA - Hollow Stem Auger	RW - Rotary Wash
UD - Undisturbed Sample	CU - Cuttings	CFA - Continuous Flight Augers	RC - Rock Core
AWG - Rock Core, 1-1/8"	CT - Continuous Tube	DC - Driving Casing	

# SCDOT Manual Auger Log

<b>Project ID:</b>	P044879	<b>County:</b>	Aiken	<b>Boring No.:</b>	P-6
<b>Site Description:</b>	Old Vaucluse Road Emergency Bridge Replacement			<b>Route:</b>	S-105
<b>Driller:</b>	L. Guempel	<b>Boring Location:</b>	N/A	<b>Offset:</b>	N/A
<b>Elev.:</b>	450.2 ft	<b>Latitude:</b>	33.62220896	<b>Longitude:</b>	-81.82534385
<b>Date Started:</b>	6/18/2025				
<b>Total Depth:</b>	6 ft	<b>Groundwater:</b>	TOB	<b>Dry</b>	24 hr NR
<b>Date Completed:</b>	6/18/2025				
<b>Dynamic Cone Penetrometer Test Procedure:</b>			Sowers and Hedges (1966)		



## LEGEND

SAMPLER TYPE		DRILLING METHOD	
SS - Split Spoon	DCP Dynamic Cone Penetrometer	HSA - Hollow Stem Auger	RW - Rotary Wash
UD - Undisturbed Sample	CU - Cuttings	CFA - Continuous Flight Augers	RC - Rock Core
AWG - Rock Core, 1-1/8"	CT - Continuous Tube	DC - Driving Casing	