



S-58 over Beaverdam Creek



SC 83 over the Little Pee Dee River

## Bridge Package 27




### Design-Build Project

Dillon & Marlboro Counties, SC | Contract ID 5570770

June 16, 2025



## 4.1 Technical Proposal Narrative

 *This document is bookmarked for your convenience.*  
*Green and underlined text within this document indicates a*  
***HYPERLINK** and will take you to more detailed information.*  
*To return to your previous location,*  
*simply type  + *



## 1 Project Delivery and Approach

### a Assurances and ability to complete the Project within the required time frame

The Reeves/RK&K DB Team's proven success in design and construction on both CLRB 20 and CLRB 21 demonstrates our ability to complete this project on schedule. Construction of the 16 bridge sites on CLRB 20 and eight bridge sites on CLRB 21 **were substantially completed on April 6, 2023 (five months early) and November 22, 2023**, respectively, with the performance as shown in the **table below**.

Through established planning and coordination procedures, our Team completed

the construction on 15 out of the combined 24 CLRB sites **ahead of their intermediate construction time schedules**. Our performance on the CLRB projects provides assurance to SCDOT that our Team has the ability to deliver this project. Our Team has the resource capacity with experienced team members available for design and construction operations to successfully perform and exceed SCDOT expectations on this Bridge Package 27 Project. The Reeves/RK&K DB Team will implement similar techniques and innovation, including lessons learned, planning for long lead times on materials, utility relocations, permitting, construction access, and erosion control. The continuation of our Team from CLRB 20, CLRB 21, and Bridge Package 30 will enhance our ability to provide the same cost certainty experienced on those projects.

In keeping with our SOQ approach, the Reeves/RK&K DB Team will implement concurrent execution of the two sites. Design will commence, at risk, upon announcement of apparent low bidder to maximize schedule certainty for the

project. Construction of site SC-83 will commence at the earliest possible dates for demolition, grading and bridge construction, upon completion of required utility relocations and permitting. Construction of site S-58 will be scheduled during summer months to capitalize upon seasonally low water levels.



#### SUCCESSFUL COLLABORATION WITH SCDOT

- District 4 project, on two sites, SCDOT (including District 4 and Office of Alternative Delivery) and our Team expedited the utility relocation work by acquiring quotes, issuing change orders between SCDOT and DBT, issuing contracts from the DBT to Utility contractors to progress the utility relocation work, while the Memorandum of Agreement between the Utility Owner and SCDOT was finalized, to keep the project on schedule.
- Pile lengths on one site were verified with Designer and SCDOT for minimal length piles due to varying rock elevation below natural ground, and the verification check was completed with no impact to the project schedule.

**Team Past Performance on Closed and Load Restricted Bridge Packages for SCDOT**

Bridge Package	Design Complete	Construction Complete (Open to Traffic)	Sites Completed Ahead of Schedule
CLRB 20	16	16	10
CLRB 21	8	8	5



Construction on the sites will overlap as shown on our simplified graphical schedule (page 7) and in more detail within our CPM Schedule contained in [Appendix A.3](#).

**Providing Schedule Certainty** | As Reeves has demonstrated on CLRB 20 & 21, two to three sites can be constructed concurrently while maintaining and expediting the project schedule. Our Team has scheduled the project construction to match site specifics, RFP requirements, and other factors in the table below.

Bridge Site No.	Road No.	Crossing	Schedule Certainty Factors
1	SC 83	Little Pee Dee River	Commence design, at risk, upon announcement
			Utilize trestle work bridge to minimize impacts from high water
			Consistent communication with utilities to maintain relocation schedules
			Designed to minimize ROW acquisitions
			Perform any available demolition, grading and access in advance of RFC plans
			Dedicated site-specific CPM schedule
2	S-58	Beaverdam Creek	Commence design, at risk, upon announcement
			Execution during summer months to capitalize upon seasonally low water
			Single 200 T crane to service site and eliminate time consuming crane moves
			Construction schedule provides schedule float for permitting and utility relocation

Addressing basic schedule certainty factors in the ordering of the project schedule sets the framework. During finalization of the CPM Schedule, our Team will maintain our strategy of avoiding final asphalt surface mix placement during seasonal restrictions where overall project schedule allows. As evidenced by the Incentive/Disincentive completion date provided within Section 108

of Exhibit 5, SC 83 carries a significant importance to SCDOT and the citizens of Marlboro County. In recognition of this importance, our Team will develop and maintain a site specific CPM schedule to enhance the management and timely delivery of SC-83 over the Little Pee Dee River. This schedule will be developed and maintained by our skilled professionals who have provided these same services in the delivery of the Gaffney T-Bridge and several critical latex deck overlays on I-26 Newberry. To monitor utility relocation schedule challenges, we will create activities within our CPM schedule during the design phase to identify relocations at each site to be reviewed and updated every two weeks. This additional detail for utility relocations will allow our Team to monitor progress closely and provide opportunities to react to adverse relocation activity. Our Team is aware of recent changes to Charter utility relocation requirements. Marcel Seely of OLH will aggressively pursue



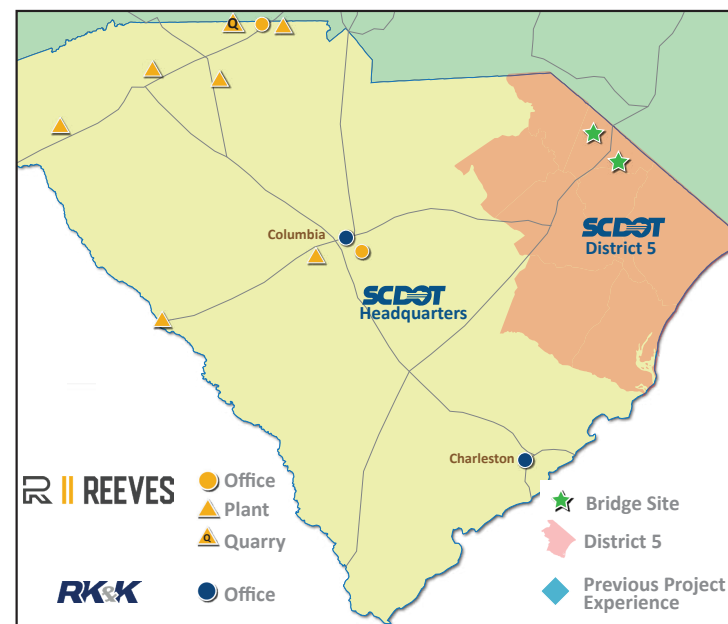


necessary documentation of existing encroachment permits and communicate relentlessly to obtain no-cost letters for both sites to avoid unnecessary delays. The waterline relocation at S-58 is 100% reimbursable via Act 36. Without modification to the preliminary plans, our Team will be able to "hit the ground running" to obtain an executed MOA.

Lead times for precast concrete elements and ready-mix concrete deliveries, and the resulting advanced scheduling requirements, have increased over the last couple years making these resources critical. Our Team's strategy for mitigating potential delays, is to maintain frequent and detailed communication with suppliers and subcontractors about the project schedule. To ensure proper schedule dates, we will update our CPM schedule weekly to aggressively coordinate suppliers, subcontractors and internal resources to manage multiple bridge sites concurrently.

**Geographic Benefits of Team's Assets** | As illustrated by the map on the below, these bridge sites are conveniently located within Reeves' normal historic project reach. As shown in the Bridge Package 27 Crew Member Proximity table below, we have bridge crew resources within easy driving distance of these two sites. These resources, utilizing office connexes for meetings and storage on each site, and the established working relationship between Reeves and RK&K, will enable our Team to continue our seamless integration, communication, and ability to resolve challenges as a partner with SCDOT. We will be able to address RFI's and attend all project meetings (design and construction) with same day notice. For situations requiring immediate attention, we can leverage the many collaborative tools our team has successfully used during this pursuit and other project efforts. Additionally, Reeves maintains paving crews and equipment in the region that can be mobilized to maintain project delivery dates if necessary.

Bridge Package 27 Crew Member Proximity								
Bridge Site No.	Road No.	Crossing	Isabel Gomez		Servando Carlos		Javonte Truesdale	
			Minutes	Miles	Minutes	Miles	Minutes	Miles
1	SC 83	Little Pee Dee River	92	72	87	71	60	45
2	S-58	Beaverdam Creek	112	90	107	88	77	59





CLRB 20 Abbeville S-218 over Branch of Little Penny Creek

CLRB 21 Union S-87 over Padgett's Creek





## b Describe your approach to design and how it minimized the need for new right-of-way on the project

During our field inspections we noted items such as utility conflicts, hydraulic conditions, right-of-way issues, environmental concerns, roadway geometry, tie down locations, and constructability. These have been incorporated into the design tasks completed to date as detailed within this section. This level of design is consistent with our approach on both CLRB 20 and CLRB 21 which positions our Team to easily meet the required project schedule. Right-of-way minimization for each site is detailed further in the table below.

Bridge Site No.	Road No.	Crossing	SCDOT Concept	RK&K Design	Reduced ROW (ac.)
1	SC 83	Little Pee Dee River	1.15	0.26	-0.89
2	S-58	Beaverdam Creek	0.19	0.18	-0.01
Bridge Package 27 Total ROW Reduction					-0.90



**Hydrology and Bridge Hydraulic Design** | The minimization to right-of-way starts with the bridge crossing. By analyzing the bridge hydraulics for each site, we are able to determine if a bridge can be lowered or shortened while still meeting the requirements set forth in the RFP for the designated design storm event, backwater and freeboard for each site.



**Bridges** | The key design decisions associated with bridge design build off of the hydraulic analysis results. We focused maximizing the use of precast, prestressed cored slabs and box beams while minimizing bridge lengths, number of spans and interior bents. We also paid close attention to span types and lengths with a goal of utilizing as many like spans as possible to expedite material delivery by eliminating multiple set ups for the fabricator.

Preliminary Bridge Details							
Bridge Site No.	Road No.	Crossing	Superstructure Type	Foundation Type	Length (ft.)	Width (ft.)	Span Arrangement
1	SC 83	Little Pee Dee River	AASHTO Type III / AASHTO Type IV	Steel H Piles/Drilled Shafts	420'	36.25'	75-75-110-75-75
2	S-58	Beaverdam Creek	21" Cored Slabs	Steel H Piles / Prestressed Piles	150'	36'	50-50-50



**Roadway Design** | The roadway approaches for each site have been minimized through careful design of horizontal and vertical geometries while still meeting all requirements of the RFP. The lower profiles created with the hydraulic analysis reduces impacts due to shoulders, fill slopes, guardrail warrants, drainage ditches, and construction and NPDES limits, reducing the amount of necessary right-of-way.





**Design Completed to Date** | The conceptual design plans included in our Technical Proposal Appendices have been produced through coordination with all of our design disciplines and subconsultant partners. This is why we are comfortable eliminating the Preliminary Roadway and Bridge plan package submittals as permitted in the RFP. We are 80% to 90% complete with the right-of-way plans at this concept phase and confident in our process. To date, we have started our roadway submittal process with the Right-of-Way Submittal Package on 34 bridge sites, spanning four separate Bridge Packages for SCDOT with only minor comments and revisions necessary.

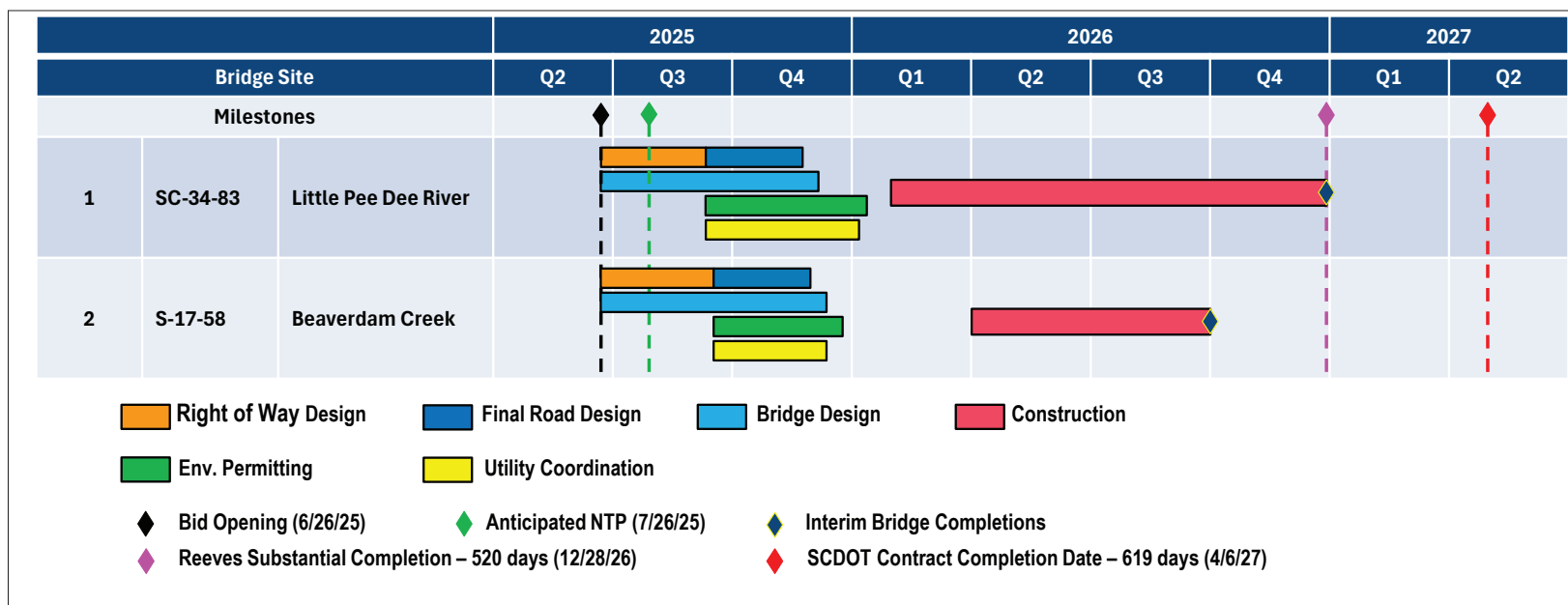


### SUCCESSFUL COLLABORATION WITH SCDOT

To date, on our Closed and Load Restricted Bridge Packages, SCDOT has not received a contractor initiated Change Order Request from the Reeves / RK&K Design-Build Team.

## c Describe the proposed design submittal process

Our submittal schedule for this package is detailed in our CPM Schedule in [Appendix A.3](#) and illustrated graphically in the chart on below. RK&K will serve as the Lead Design Engineer and is fully committed to meeting the design submittal milestones through a coordinated and disciplined design approach.





RK&K will handle all design task responsibilities for both bridge sites. They will be assisted by OLH for Utility Coordination, and Freehold Focus for Right of Way acquisition. Each firm will produce the necessary plans, reports, agreements, and certifications for each submittal and QC the work together prior to the submittal. RK&K will assemble all submittal documents and upload them to SCDOT's ProjectWise project folder for Bridge Package 27 for review. When comments come back, they will be disseminated to the appropriate staff for revisions and responses meeting the RFP requirements for five days for each resubmittal.

The Team's goal is to get Right of Way plans expedited for both sites in the package facilitating right of way acquisition, environmental permitting, and utility coordination tasks ahead of construction as evidenced in our submittal schedule.





## SUCCESSFUL COLLABORATION WITH SCDOT

In October 2023, a routine inspection revealed structural repair needs beyond the original scope of the Gaffney T-Bridge Project. SCDOT and Reeves partnered to add Design-Build delivery to the project to fast track the critical repairs. Reeves successfully accelerated the work, reopening the bridge on schedule, ensuring continued access for emergency vehicles.

SCDOT Gaffney T-Bridge Project

[illegible]

## Appendix A.1 - Roadway Plans





INDEX OF SHEETS

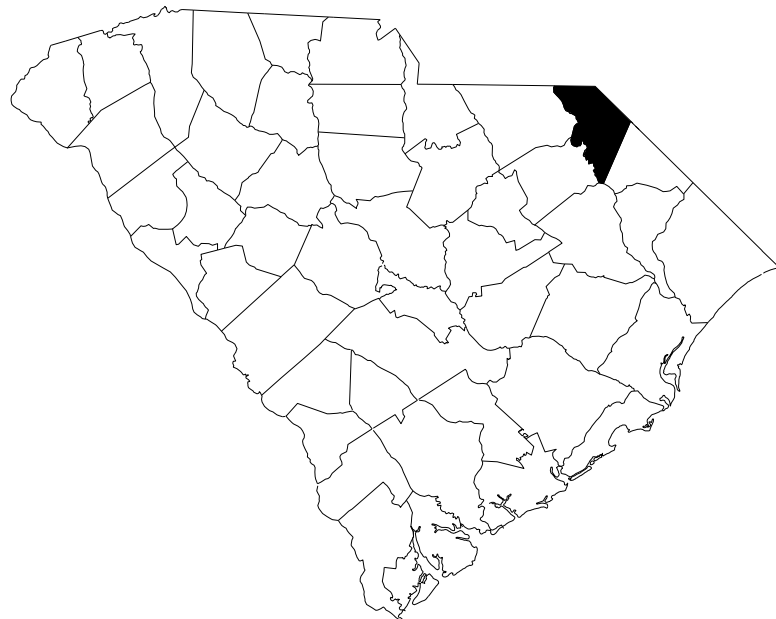
SHEET NO.	DESCRIPTION	SHEET SUBTOTALS
1	TITLE SHEET	1
3	TYPICAL SECTION	1
6	PLAN AND PROFILE SHEET	1
TOTAL SHEETS =		3



CONCEPTUAL ROADWAY PLANS  
FOR

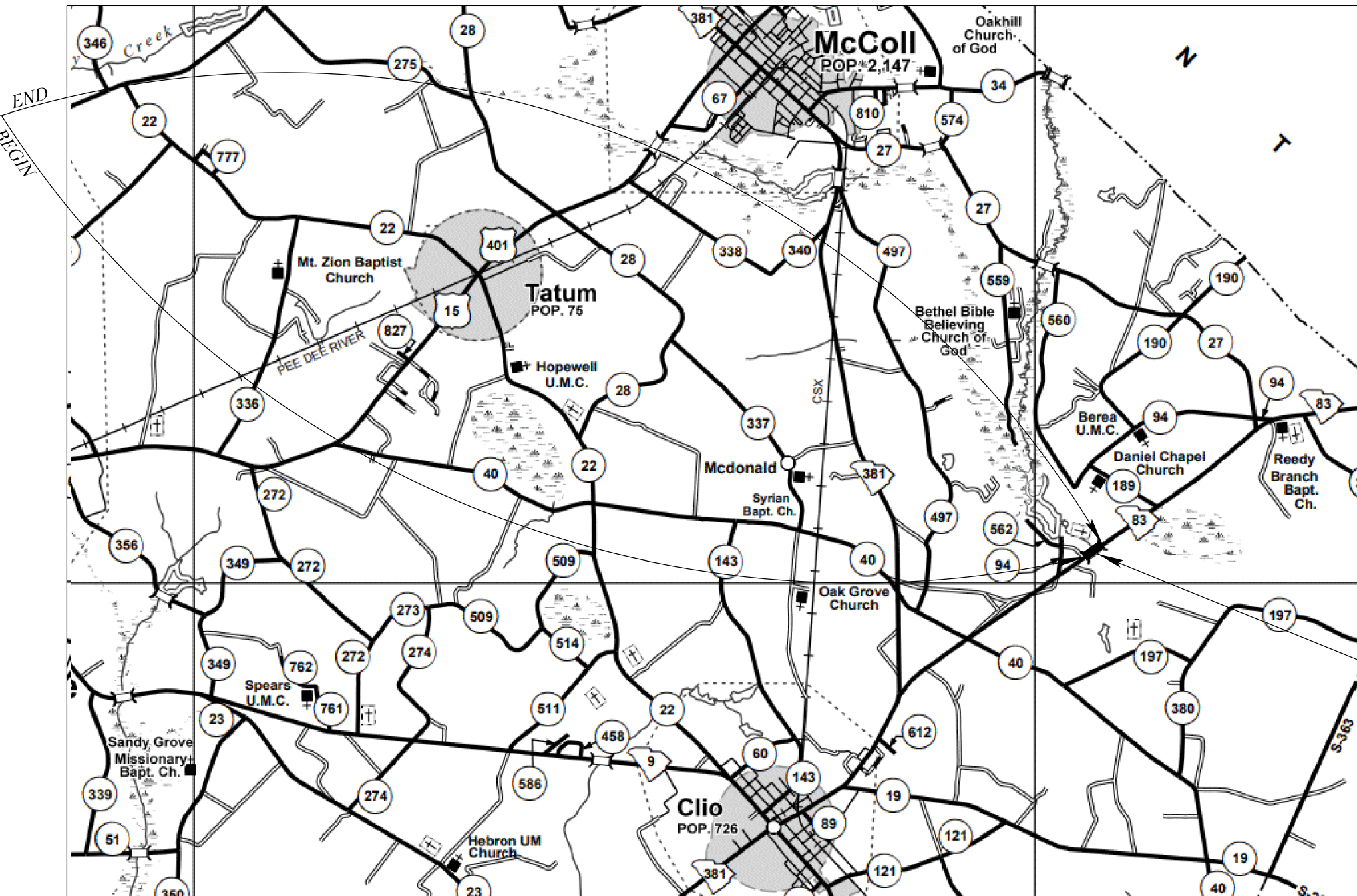
MARLBORO COUNTY  
PROJECT ID P042879

SC 83  
BRIDGE REPLACEMENT OVER LITTLE PEE DEE RIVER



MAP SHOWING LOCATION OF  
MARLBORO COUNTY IN SOUTH CAROLINA

PROJECT ID: P042879  
ROAD SC 83  
STA. 99+40.00 TO STA. 109+64.00  
SEE SHEET 6



MARLBORO COUNTY MAP

LAYOUT

SCALE = N.T.S.

	SC 83	TOTAL
NET LENGTH OF ROADWAY	0.114	0.114 MILES
NET LENGTH OF BRIDGES	0.079	0.079 MILES
NET LENGTH OF PROJECT	0.195	0.195 MILES
LENGTH OF EXCEPTIONS	0.000	0.000 MILES
GROSS LENGTH OF PROJECT	0.195	0.195 MILES

EQUALITIES IN STATIONING: NONE

NOTE: EXCEPT AS MAY OTHERWISE BE SPECIFIED ON THE PLANS OR IN THE SPECIAL PROVISIONS, ALL MATERIALS AND WORKMANSHIP ON THIS PROJECT SHALL CONFORM TO THE SOUTH CAROLINA DEPARTMENT OF TRANSPORTATION STANDARD SPECIFICATIONS FOR HIGHWAY CONSTRUCTION (2025 EDITION) AND THE STANDARD DRAWINGS FOR ROAD CONSTRUCTION IN EFFECT AT THE TIME OF FINAL RFP.

NOTE: BRIDGE PLANS BOUND UNDER SEPARATE COVER

Design Reference for these plans is the:

2018

AASHTO "A Policy on Geometric Design of  
Highways and Streets"

Design Reference for these plans is the:

2021

SCDOT Roadway Design Manual

Hydraulic Design Reference for these plans is the:

2009

Edition of SCDOT's "Requirements for  
Hydraulic Design Studies"

NPDES PERMIT INFORMATION

Disturbed Area = 1.6 Acre(s)

Project Area = 1.6 Acre(s)

Approximate Location of Roadway is

Begin

Latitude 34°36'37.1"N

Longitude 79°30'08.2"W

End

Latitude 34°36'42.3"N

Longitude 79°29'58.9"W

Hydraulic and NPDES Design  
provided by:

RK&K

Designs may be obtained from the  
SCDOT Regional Production Group

CONSTRUCT 420' X 36'-3" CONCRETE BRIDGE  
STA. 102+51.00 TO STA. 106+71.50  
(SEE BRIDGE PLANS)

ENVIRONMENTAL PERMIT INFORMATION

USACE PERMIT	<input checked="" type="checkbox"/> YES	<input type="checkbox"/> NO
NEPA DOCUMENT	<input checked="" type="checkbox"/> YES	<input type="checkbox"/> NO
401 CERTIFICATION	<input checked="" type="checkbox"/> YES	<input type="checkbox"/> NO
OCRM CAP	<input type="checkbox"/> YES	<input checked="" type="checkbox"/> NO
NAVIGABLE WATERS	<input checked="" type="checkbox"/> SC	<input type="checkbox"/> USCG
	<input type="checkbox"/> USACE	<input type="checkbox"/> N/A

3 DAYS BEFORE DIGGING IN  
SOUTH CAROLINA

CALL 811

SOUTH CAROLINA 811 (SC811)  
WWW.SC811.COM  
ALL UTILITIES MAY NOT BE A MEMBER OF SC811

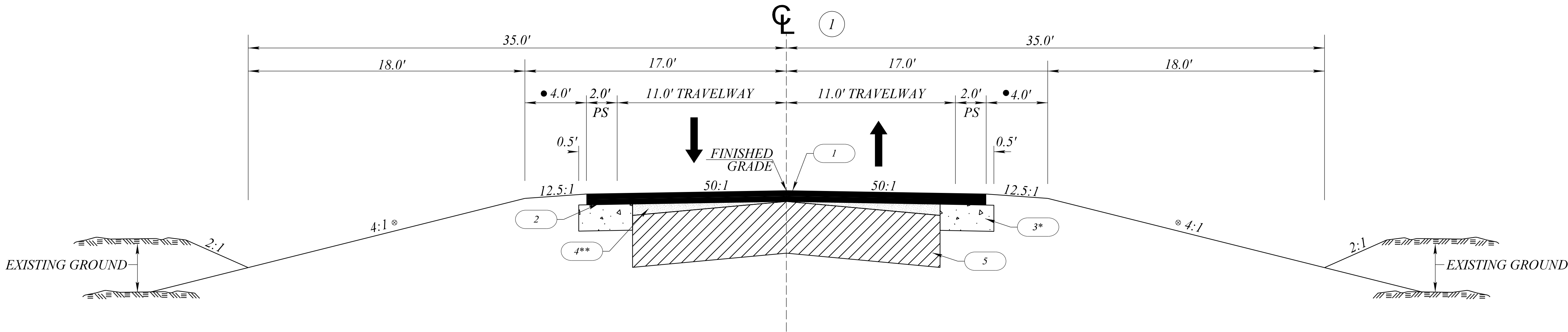
RAILROAD INVOLVEMENT?  
YES / ☒ NO

TRAFFIC DATA

2026	ADT	570
2046	ADT	700
TRUCKS	12	%



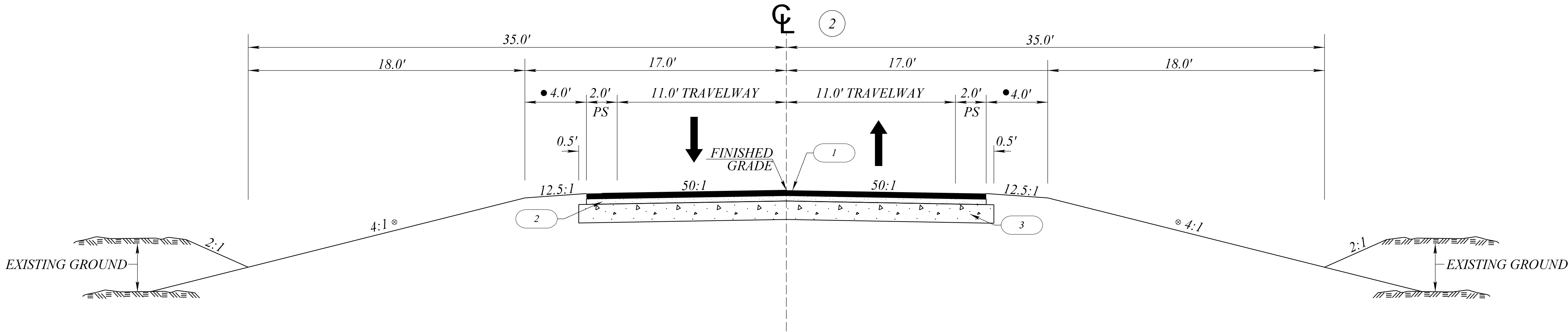




USE THIS SECTION ON:

SC 83 FROM STA. 99+ 50.00 TO STA. 100+ 50.00

SC 83 FROM STA. 108+ 50.00 TO STA. 109+ 64.00



USE THIS SECTION ON:

SC 83 FROM STA. 100+ 50 TO STA. 102+ 51.50 (BEGIN BRIDGE)

SC 83 FROM STA. 106+ 71.50 (END BRIDGE) TO STA. 108+ 50.00

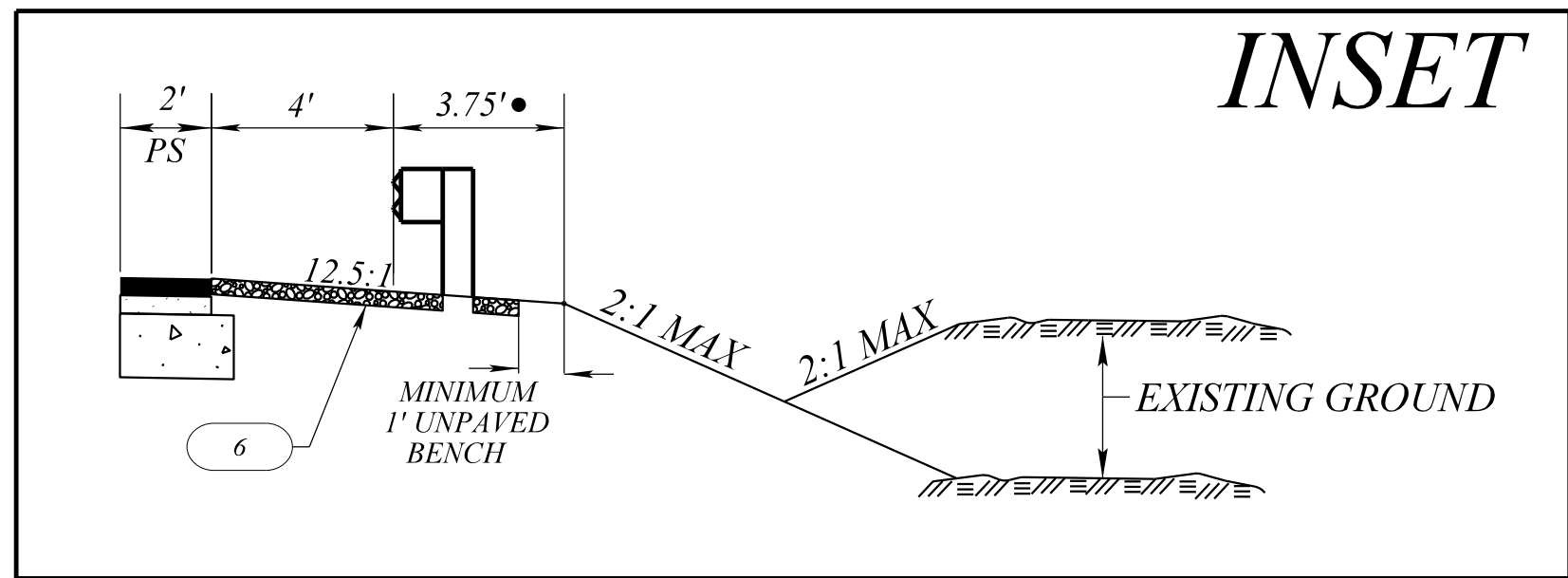
⊗ THIS SLOPE MAY BE VARIED WHEN A DEEPER DITCH IS NECESSARY FOR DRAINAGE PURPOSES.

• ADDITIONAL 3.75' WHERE GUARDRAIL IS USED. PROVIDE NON-MOW STRIP UNDER GUARDRAIL. SEE INSET.

NOTE: PAVEMENT DESIGN PROVIDED IN FINAL RFP PER SCDOT

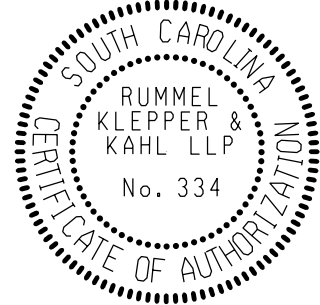
## LEGEND

- |   |  |  |
|---|--|--|
| 1 |  | HOT MIX ASPHALT SURFACE COURSE TYPE C (200 LBS/SY)   |
| 2 |  | HOT MIX ASPHALT SURFACE COURSE TYPE C (200 LBS/SY)   |
| 3 |  | HOT MIX ASPHALT BASE COURSE TYPE B (600 LBS/SY)<br>* IN AREAS WHERE EXISTING PAVEMENTS ARE WIDENED OUTSIDE THE TRAVEL LANES<br>USE 600 PSY OF SHOULDER WIDENING MATERIAL |
| 4 |  | HOT MIX ASPHALT SURFACE TYPE E FOR BUILDUP AND LEVELING 0" TO 1.8"   |
| 5 |  | EXISTING PAVEMENT - RETAIN   |
| 6 |  | 4" HOT MIX ASPHALT SURFACE COURSE TYPE C (GUARDRAIL NON-MOW STRIP)   |



INSET

FUNCTIONAL CLASS	DESIGN SPEED	FROM STA.	TO STA.
SC 83 : RURAL - MAJOR COLLECTOR	60	99+ 50.00	109+ 64.00



CONTRACTOR:  
**REEVES**

PREPARED BY:  
**RK&K**

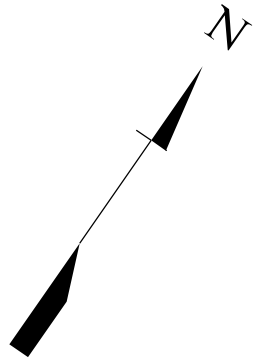
PREPARED FOR:  
**SCDOT**  
CONCEPTUAL PLANS

TYPICAL SECTION

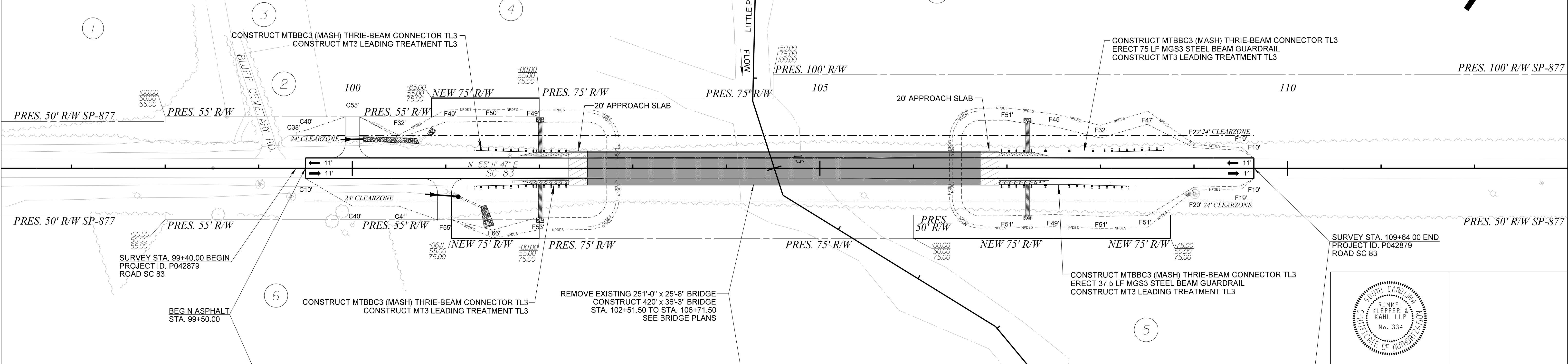
SCALE: NTS

FED. ROAD DIST. NO.	STATE	COUNTY	PROJECT ID	ROUTE NO.	SHEET NO.
3	S.C.	MARLBORO	P042879	SC 83	6

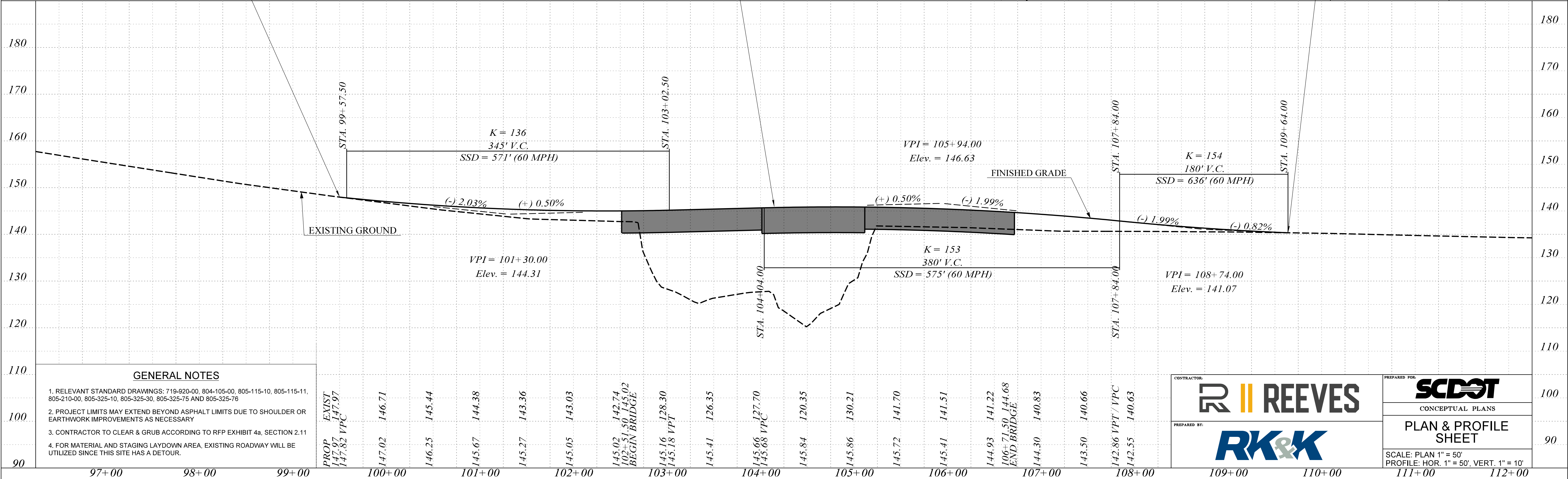
SC 83  
OVER LITTLE PEE DEE RIVER



PLAN	DATE	BY	DATE
PLAN			
NOTE BOOK			
No.			

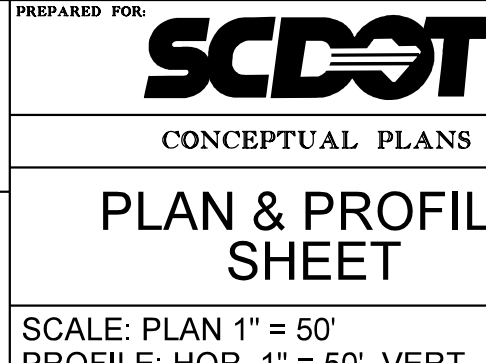


PLAN	DATE	BY	DATE
PLAN			
NOTE BOOK			
No.			



GENERAL NOTES

- RELEVANT STANDARD DRAWINGS: 719-920-00, 804-105-00, 805-115-10, 805-115-11, 805-210-00, 805-325-10, 805-325-30, 805-325-75 AND 805-325-76
- PROJECT LIMITS MAY EXTEND BEYOND ASPHALT LIMITS DUE TO SHOULDER OR EARTHWORK IMPROVEMENTS AS NECESSARY
- CONTRACTOR TO CLEAR & GRUB ACCORDING TO RFP EXHIBIT 4a, SECTION 2.11
- FOR MATERIAL AND STAGING LAYDOWN AREA, EXISTING ROADWAY WILL BE UTILIZED SINCE THIS SITE HAS A DETOUR.



SCALE: PLAN 1" = 50'  
PROFILE: HOR. 1" = 50', VERT. 1" = 10'



INDEX OF SHEETS

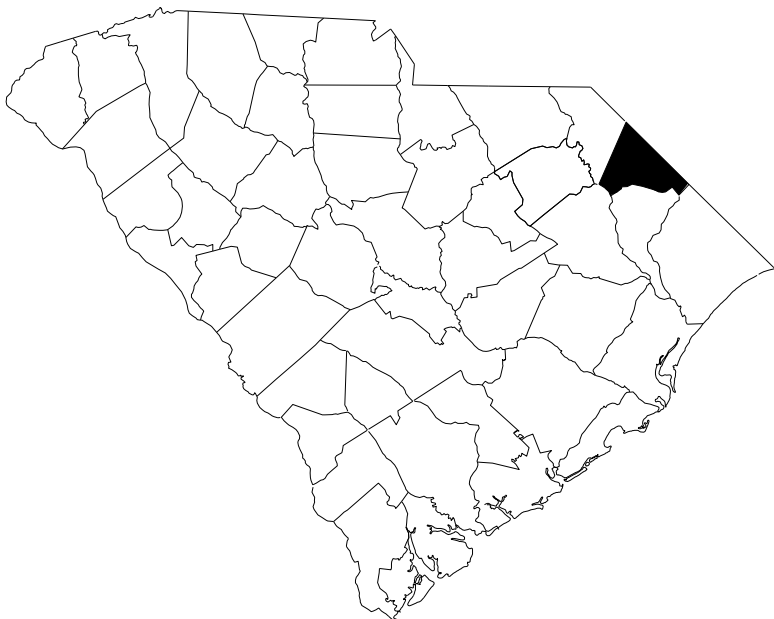
SHEET NO.	DESCRIPTION	SHEET SUBTOTALS
1	TITLE SHEET	1
3	TYPICAL SECTION	1
6	PLAN AND PROFILE SHEET	1

TOTAL SHEETS = 3



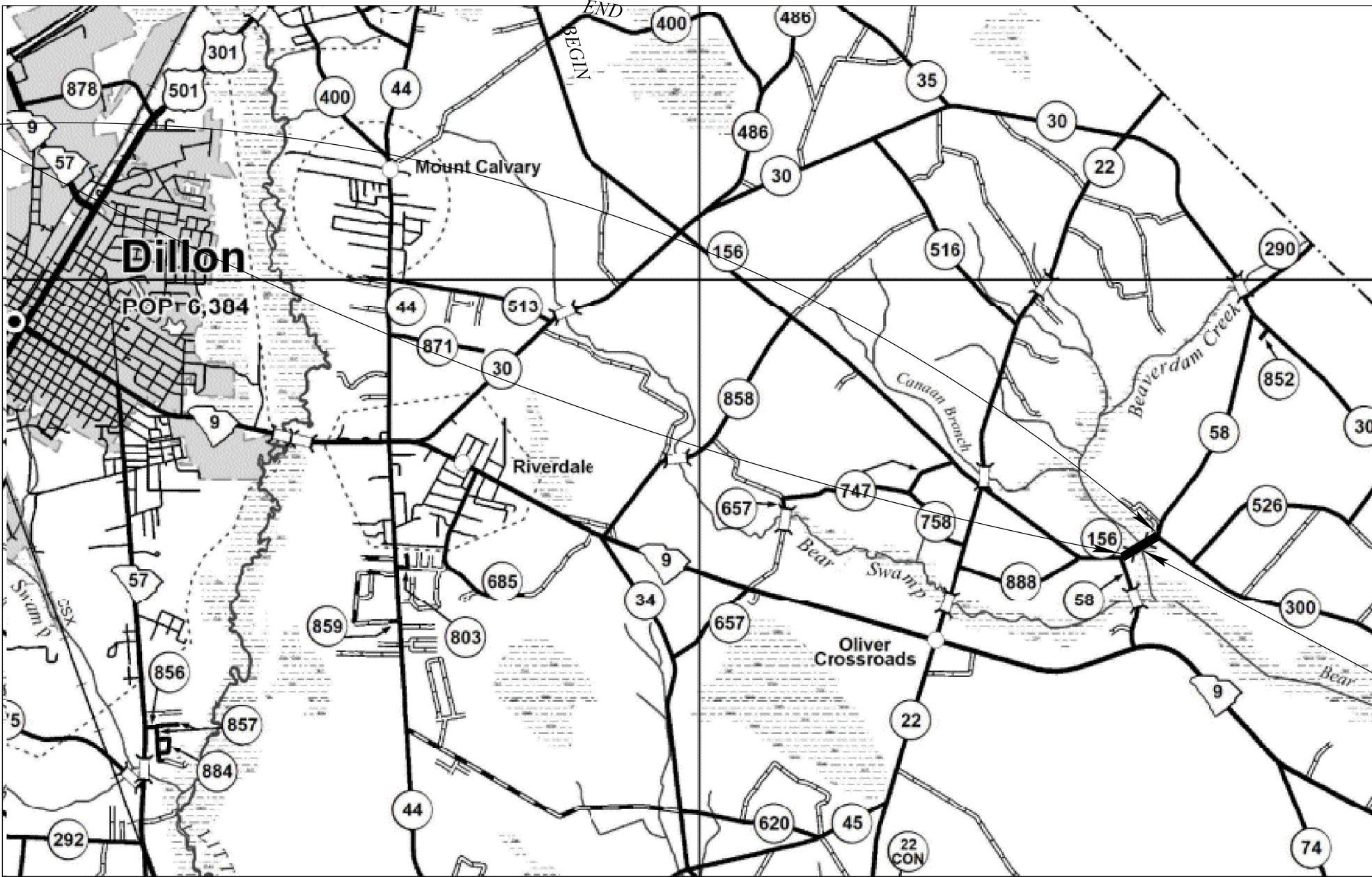
CONCEPTUAL ROADWAY PLANS  
FOR  
DILLON COUNTY  
PROJECT ID P043715

S-58 (GADDYS MILL RD.)  
BRIDGE REPLACEMENT OVER BEAVERDAM CREEK

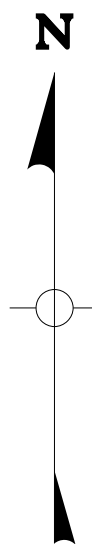


MAP SHOWING LOCATION OF  
DILLON COUNTY IN SOUTH CAROLINA

PROJECT ID: P043715  
ROAD S-58 (GADDYS MILL RD.)  
STA. 6+00.00 TO STA. 11+70.00  
SEE SHEET 6



DILLON COUNTY MAP



CONSTRUCT 150' X 36' CONCRETE BRIDGE  
STA. 7+97.66 TO STA. 9+47.66  
(SEE BRIDGE PLANS)

LAYOUT

SCALE = N.T.S.

	S-58	TOTAL
NET LENGTH OF ROADWAY	0.079	0.079 MILES
NET LENGTH OF BRIDGES	0.029	0.029 MILES
NET LENGTH OF PROJECT	0.108	0.108 MILES
LENGTH OF EXCEPTIONS	0.000	0.000 MILES
GROSS LENGTH OF PROJECT	0.108	0.108 MILES

EQUALITIES IN STATIONING: NONE

NOTE: EXCEPT AS MAY OTHERWISE BE SPECIFIED ON THE PLANS OR IN THE SPECIAL PROVISIONS, ALL MATERIALS AND WORKMANSHIP ON THIS PROJECT SHALL CONFORM TO THE SOUTH CAROLINA DEPARTMENT OF TRANSPORTATION STANDARD SPECIFICATIONS FOR HIGHWAY CONSTRUCTION (2025 EDITION) AND THE STANDARD DRAWINGS FOR ROAD CONSTRUCTION IN EFFECT AT THE TIME OF FINAL RFP.

NOTE: BRIDGE PLANS BOUND UNDER SEPARATE COVER

Design Reference for these plans is the:

2021

SCDOT Roadway Design Manual

Design Reference for these plans is the:

LVB

Supplemental Design Criteria For  
Low Volume Bridge Replacement Projects

Hydraulic Design Reference for these plans is the:

2009

Edition of SCDOT's "Requirements for  
Hydraulic Design Studies"

NPDES PERMIT INFORMATION

Disturbed Area = 0.7 Acre(s)

Project Area = 0.7 Acre(s)

Approximate Location of Roadway is

Begin

Latitude 34°23'34.8"N

Longitude 79°14'23.9"W

End

Latitude 34°23'37.6"N

Longitude 79°14'18.0"W

Hydraulic and NPDES Design  
provided by:

RK&K

Designs may be obtained from the  
SCDOT Regional Production Group

ENVIRONMENTAL PERMIT INFORMATION

USACE PERMIT	<input checked="" type="checkbox"/> YES	<input type="checkbox"/> NO
NEPA DOCUMENT	<input checked="" type="checkbox"/> YES	<input type="checkbox"/> NO
401 CERTIFICATION	<input checked="" type="checkbox"/> YES	<input type="checkbox"/> NO
OCRM CAP	<input type="checkbox"/> YES	<input checked="" type="checkbox"/> NO
NAVIGABLE WATERS	<input type="checkbox"/> SC <input type="checkbox"/> USCG <input type="checkbox"/> USACE	<input checked="" type="checkbox"/> N/A

3 DAYS BEFORE DIGGING IN  
SOUTH CAROLINA

CALL 811

SOUTH CAROLINA 811 (SC811)  
WWW.SC811.COM  
ALL UTILITIES MAY NOT BE A MEMBER OF SC811

RAILROAD INVOLVEMENT?  
YES / ☒ NO

TRAFFIC DATA

2026 ADT 80  
2046 ADT 160  
TRUCKS 9 %











## Appendix A.2 - Bridge Plans





INDEX OF SHEETS

- 1. TITLE SHEET
- 2. BRIDGE PLAN AND PROFILE
- 3. END BENTS 1 & 6
- 4. INTERIOR BENTS 2 & 5
- 5. INTERIOR BENTS 3 & 4
- 6. SUPERSTRUCTURE TYPICAL SECTION SPANS 1, 2, 4, & 5
- 7. SUPERSTRUCTURE TYPICAL SECTION SPAN 3



SOUTH CAROLINA DEPARTMENT OF TRANSPORTATION



CONCEPTUAL PLANS  
FOR  
MARLBORO COUNTY  
PROJECT ID P042879  
ROUTE SC 83  
REPLACE BRIDGE OVER LITTLE PEE DEE RIVER



APPROXIMATE LOCATION OF BRIDGE IS

LATITUDE 34°- 36' - 40" N  
LONGITUDE 79°- 30' - 04" W

SITE LOCATION

LAYOUT

3 DAYS BEFORE DIGGING IN  
SOUTH CAROLINA  
CALL 811  
SOUTH CAROLINA 811 (SC811)  
WWW.SC811.COM  
ALL UTILITIES MAY NOT BE A MEMBER OF SC811

ASSET ID NOT ASSIGNED

TRAFFIC DATA

2026 ADT 570 V.P.D.  
2046 ADT 700 V.P.D.  
TRUCKS 12 %

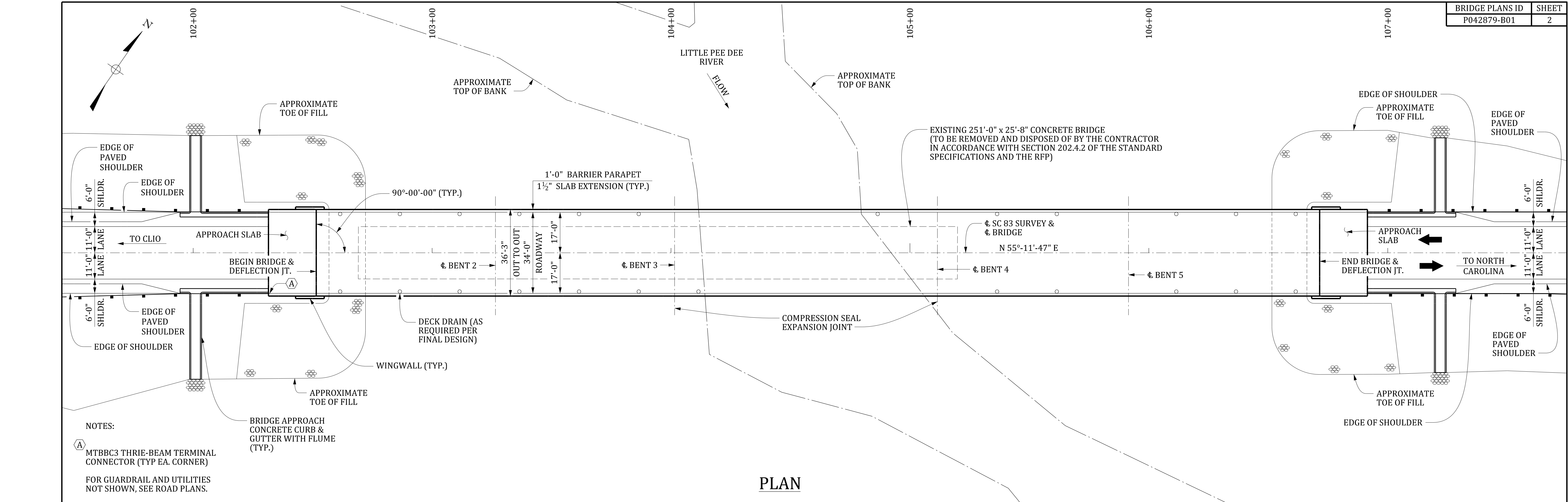
NET LENGTH OF ROADWAY	0.000	MILES
NET LENGTH OF BRIDGES	0.079	MILES
NET LENGTH OF PROJECT	0.079	MILES
LENGTH OF EXCEPTIONS	0.000	MILES
GROSS LENGTH OF PROJECT	0.079	MILES

NOTE: EXCEPT AS MAY OTHERWISE BE SPECIFIED ON THE PLANS OR IN THE SPECIAL PROVISIONS, ALL MATERIALS AND WORKMANSHIP ON THIS PROJECT SHALL CONFORM TO THE SOUTH CAROLINA DEPARTMENT OF TRANSPORTATION STANDARD SPECIFICATIONS FOR HIGHWAY CONSTRUCTION AND THE STANDARD DRAWINGS FOR ROAD CONSTRUCTION IN EFFECT AT THE TIME OF LETTING.

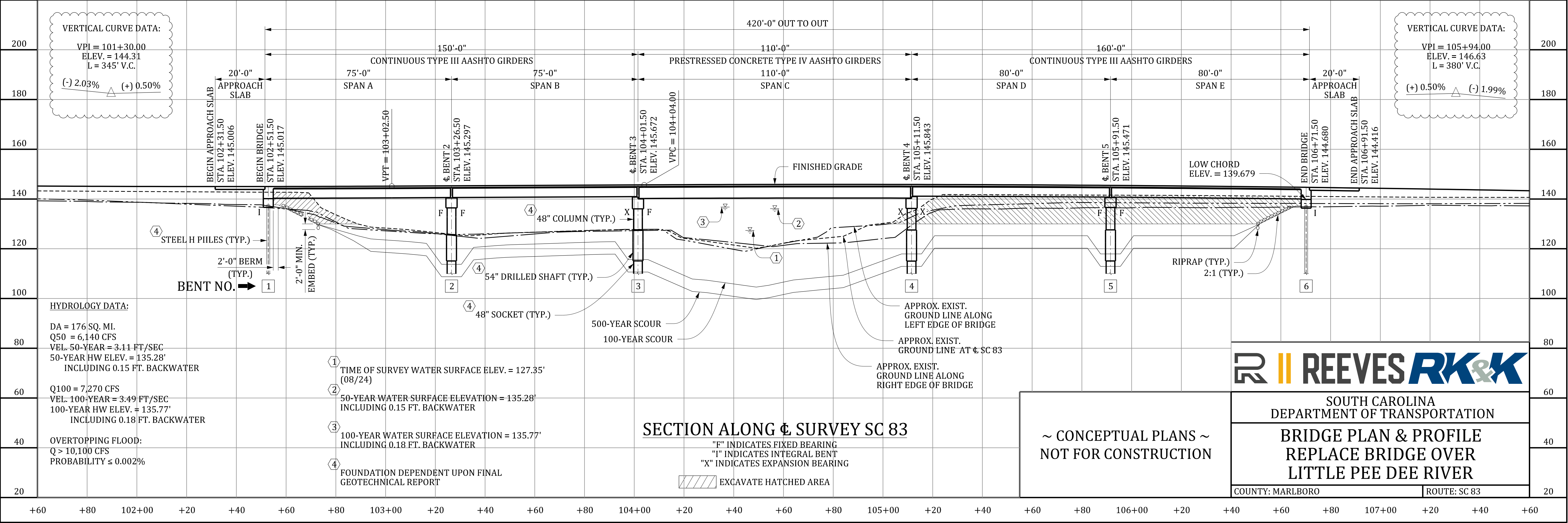




REVIEWED: LKA 06-25		6/13/2025 3:14:18 PM 02_SC83bp.dgn	
QUAN.	REV.	BY	CHK.
DR.	WST	LKA	06-25
DES.	REV.		



PLAN



SECTION ALONG  $\phi$  SURVEY SC 83

"F" INDICATES FIXED BEARING  
"I" INDICATES INTEGRAL BENT  
"X" INDICATES EXPANSION BEARING  
EXCAVATE HATCHED AREA

~ CONCEPTUAL PLANS ~  
NOT FOR CONSTRUCTION

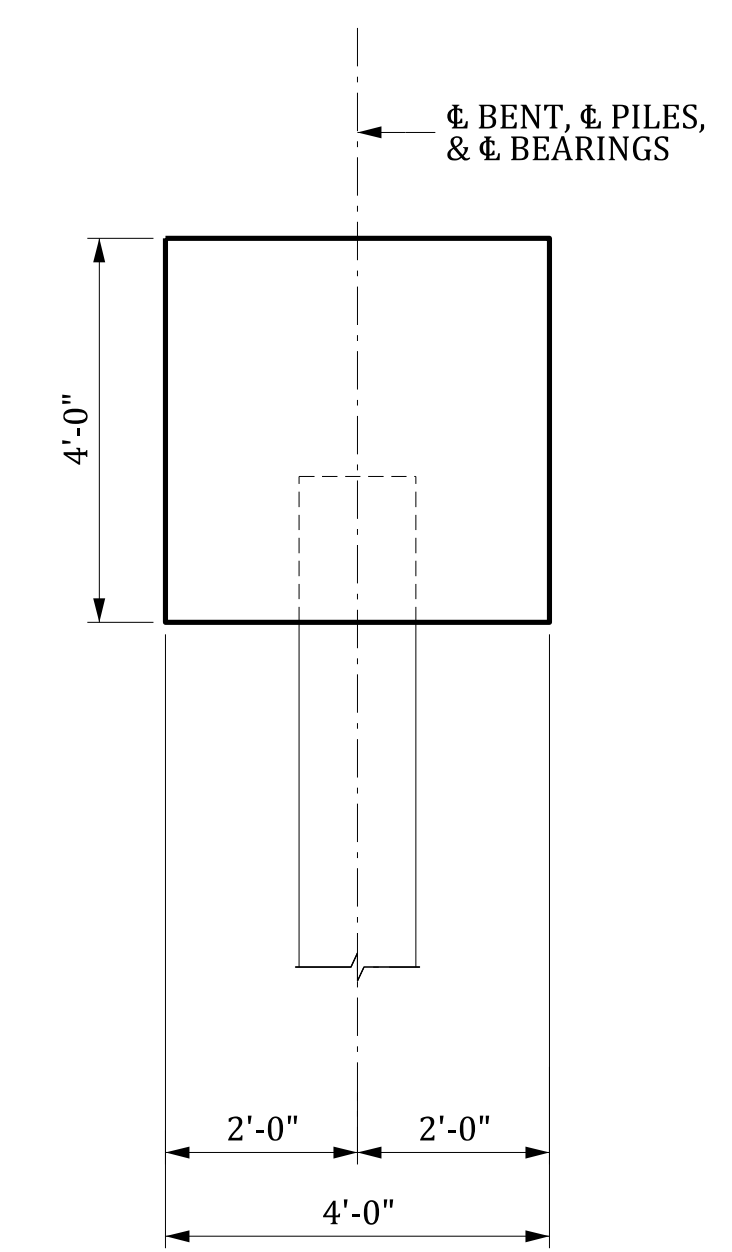
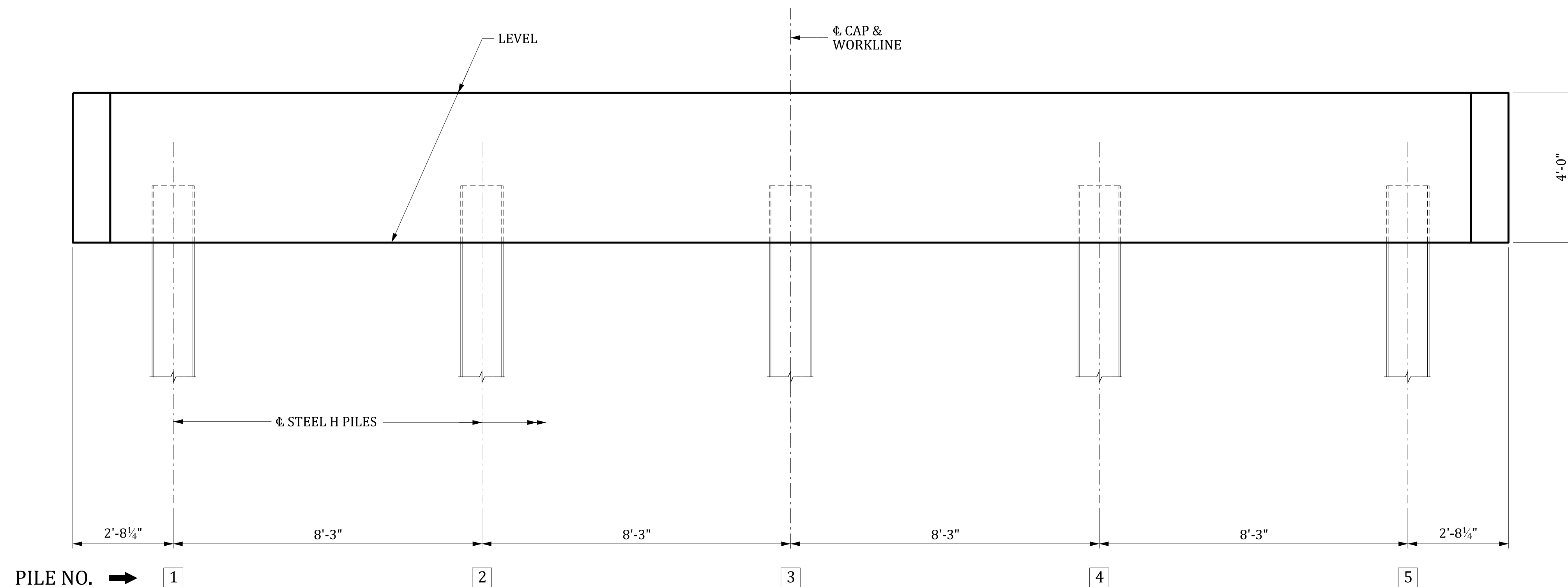
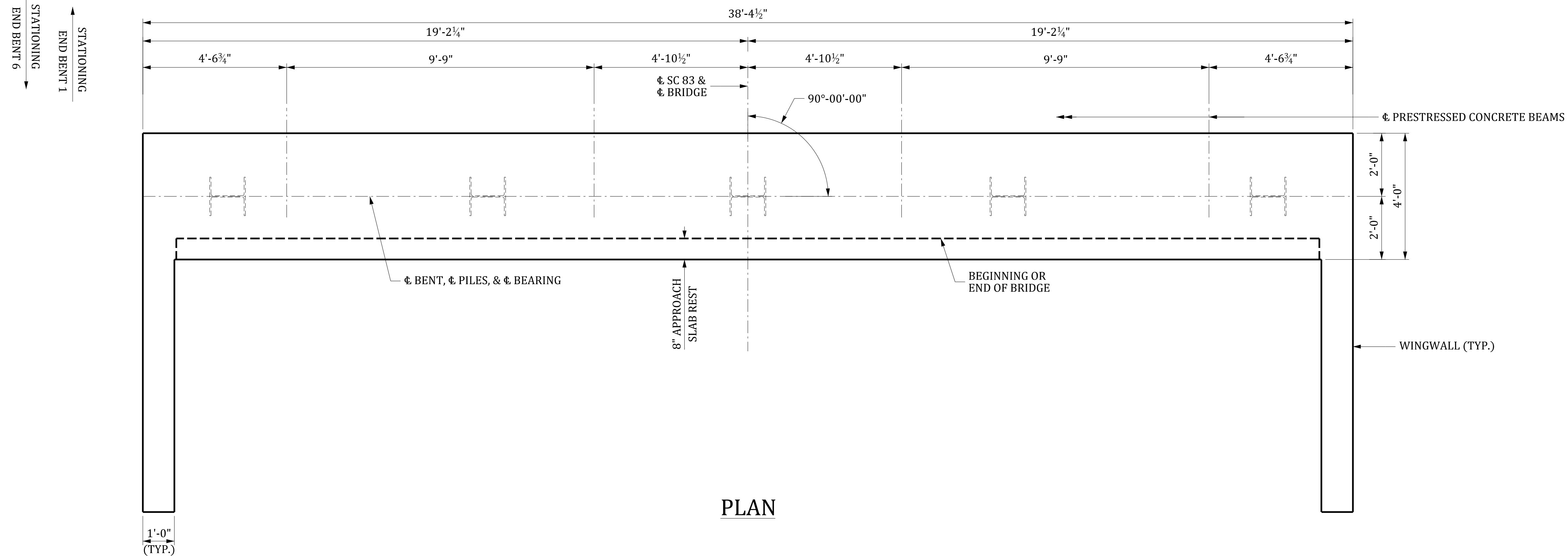


SOUTH CAROLINA  
DEPARTMENT OF TRANSPORTATION

BRIDGE PLAN & PROFILE  
REPLACE BRIDGE OVER  
LITTLE PEE DEE RIVER

COUNTY: MARLBORO

ROUTE: SC 83



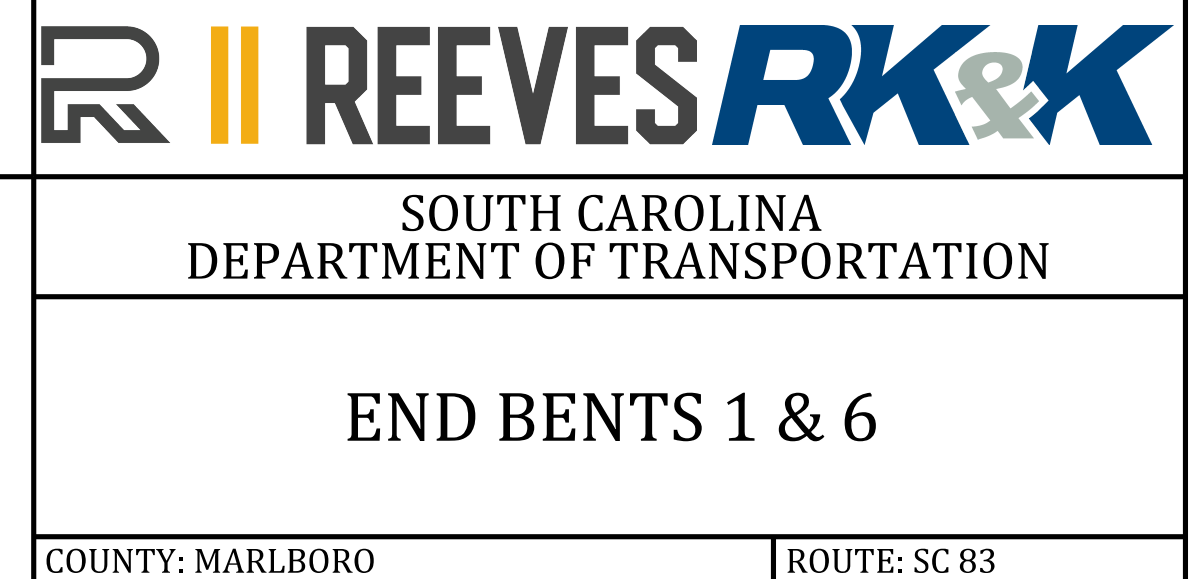
PILE NO. ➡ 1

PILES ARE NUMBERED FROM  
LEFT TO RIGHT LOOKING  
IN DIRECTION OF STATIONING.

### ELEVATION

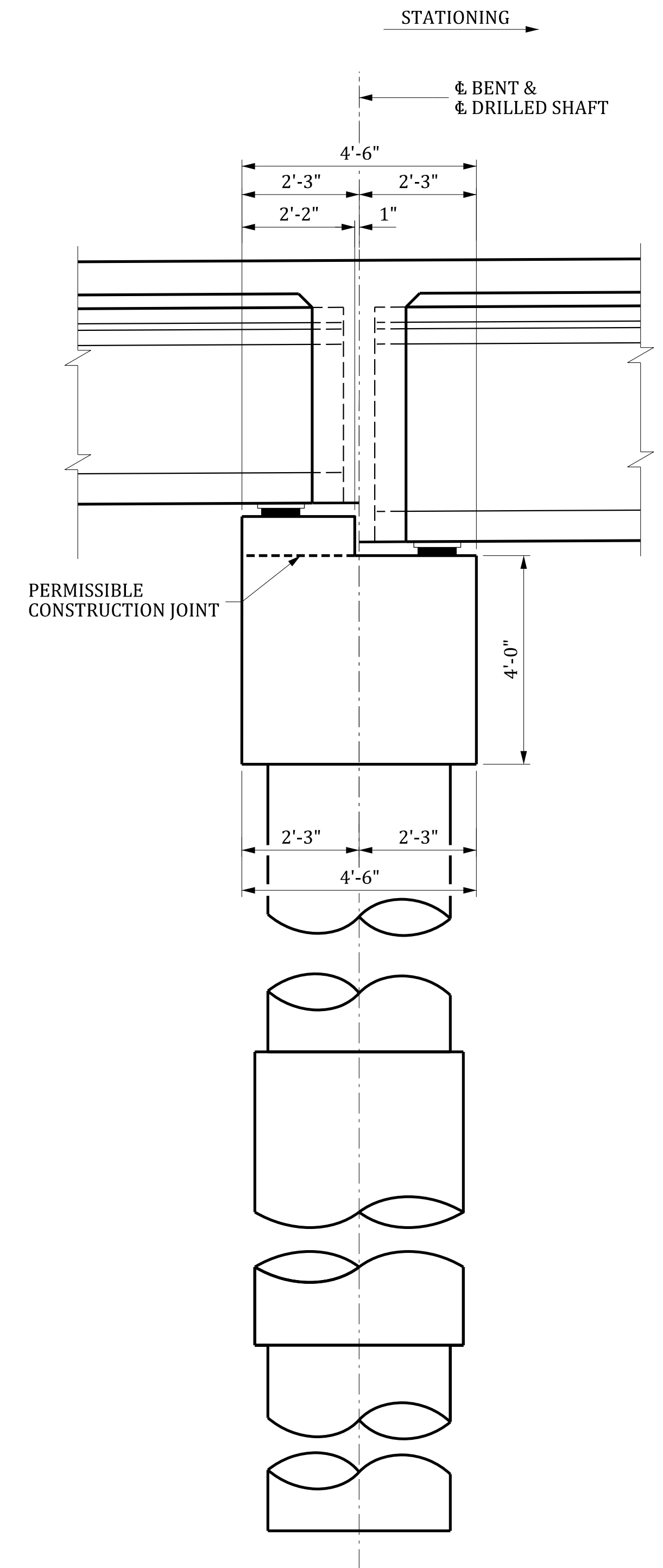
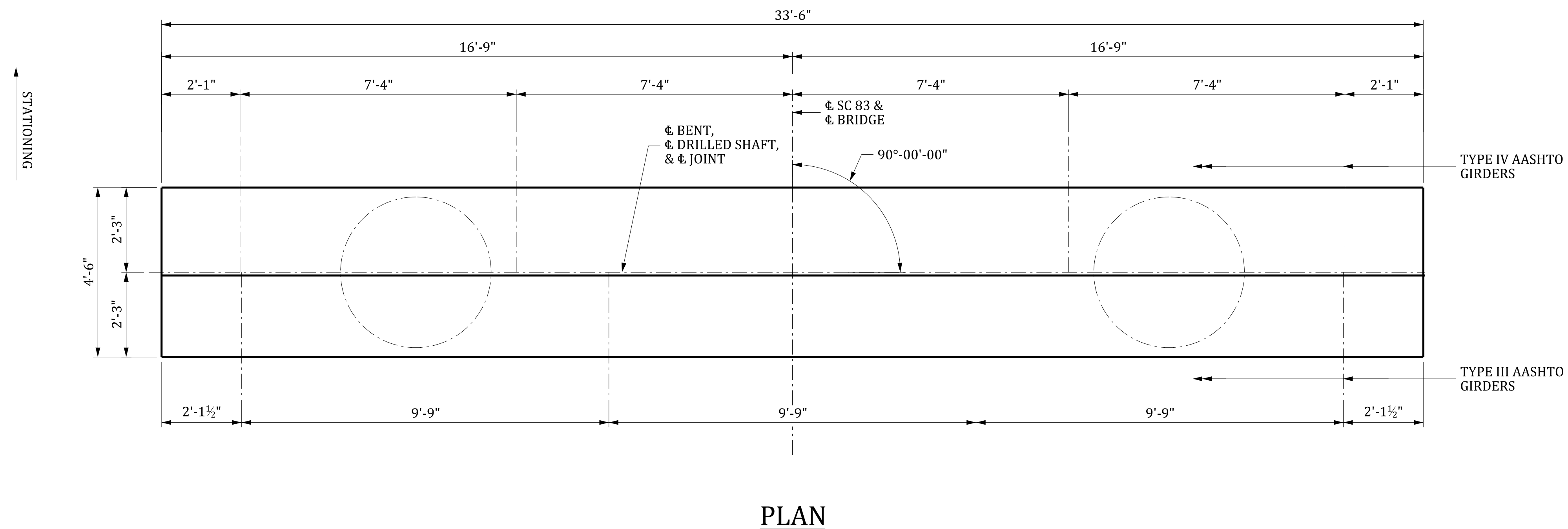
(LOOKING IN DIRECTION OF STATIONING - END BENT 1)  
(LOOKING IN OPPOSITE DIRECTION OF STATIONING - END BENT 2)  
\* FOUNDATION SIZE DEPENDANT UPON FINAL GEOTECHNICAL REPORT.

~ CONCEPTUAL PLANS ~  
NOT FOR CONSTRUCTION

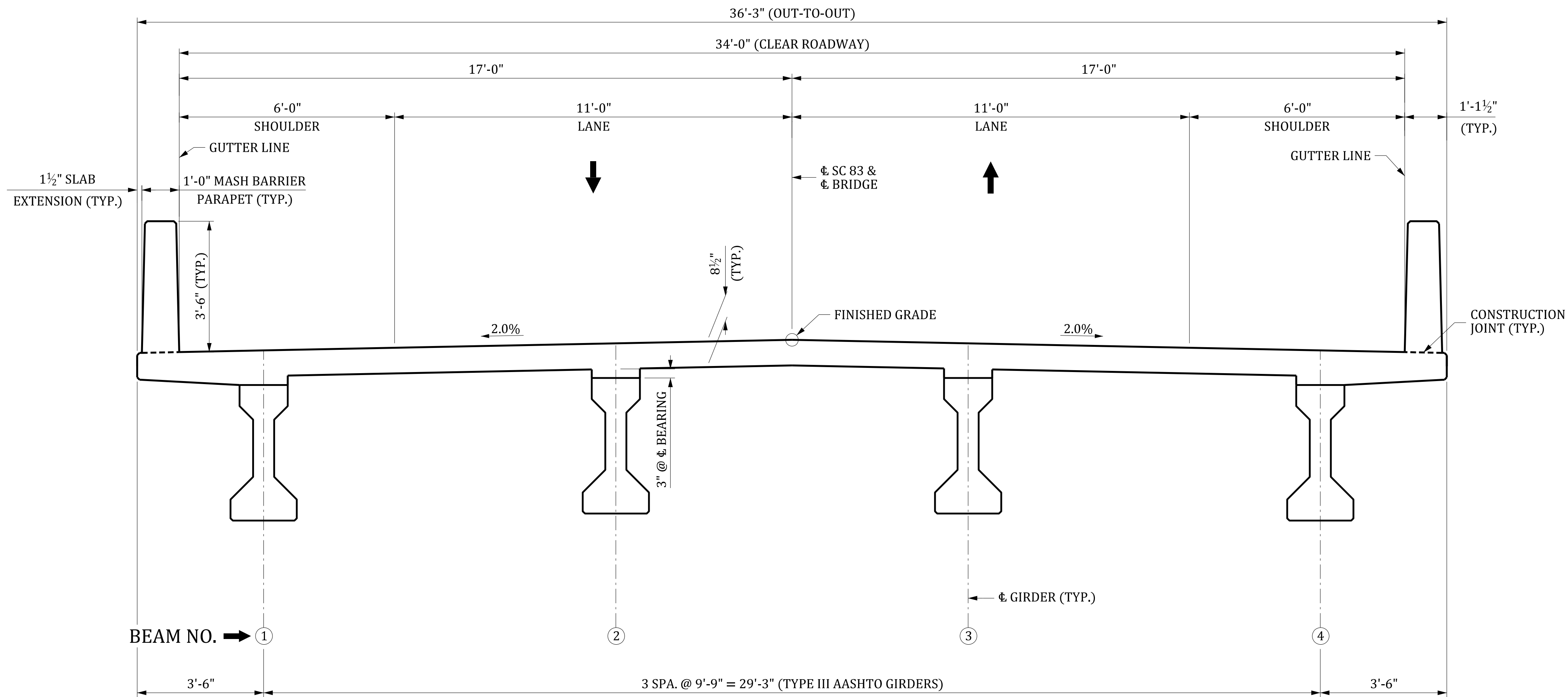








**SECTION THRU BENT**  
(BENT 3 SHOWN, BENT 4 SIMILAR)



SUPERSTRUCTURE TYPICAL SECTION  
(LOOKING IN DIRECTION OF STATIONING)

6/13/2025 3:34:46 PM 06.SC83typ1.dgn	
REV.	
REV.	
REV.	
BY	CHK. DATE DESCRIPTION OF REVISION

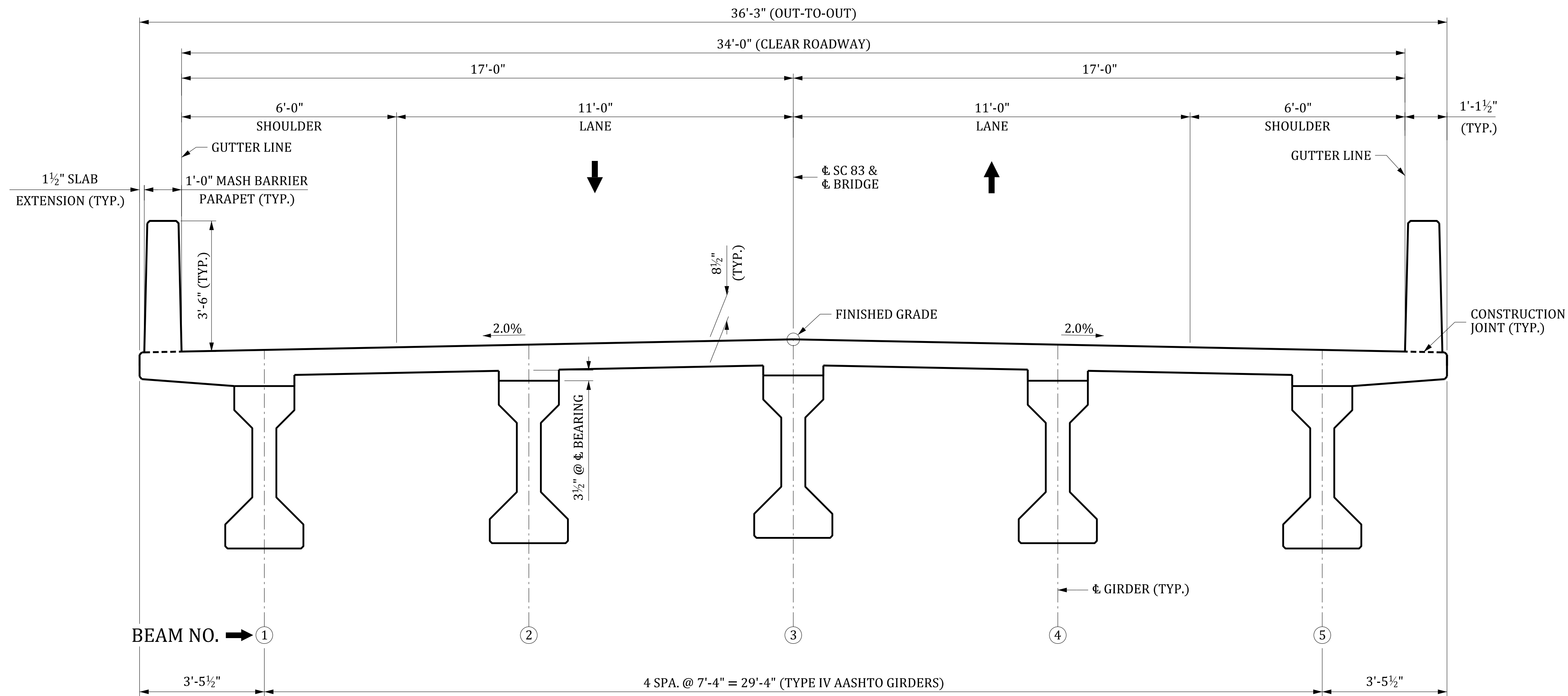
REVIEWED:	LKA	06-25
QUAN.		
DR.	CBH	LKA 06-25
DES.		
	BY	CHK. DATE

~ CONCEPTUAL PLANS ~  
NOT FOR CONSTRUCTION

SOUTH CAROLINA  
DEPARTMENT OF TRANSPORTATION

**SUPERSTRUCTURE  
TYPICAL SECTION  
SPANS 1, 2, 4, & 5**


COUNTY: MARLBORO | ROUTE: SC 83



**SUPERSTRUCTURE TYPICAL SECTION**  
(LOOKING IN DIRECTION OF STATIONING)

REVIEWED:		LKA	06-25	6/13/2025		3:37:39 PM	07_SC83typ2.dgn
QUAN.				REV.			
DR.	CBH	LKA	06-25	REV.			
DES.				REV.			
		BY	CHK.	DATE	DESCRIPTION OF REVISION		

~ CONCEPTUAL PLANS ~  
NOT FOR CONSTRUCTION



SOUTH CAROLINA  
DEPARTMENT OF TRANSPORTATION

**SUPERSTRUCTURE  
TYPICAL SECTION  
SPAN 3**

COUNTY: MARLBORO

ROUTE: SC 83



INDEX OF SHEETS

- 1. TITLE SHEET
- 2. BRIDGE PLAN AND PROFILE
- 3. END BENTS 1 & 4
- 4. INTERIOR BENTS 2 & 3
- 5. SUPERSTRUCTURE TYPICAL SECTION



SOUTH CAROLINA DEPARTMENT OF TRANSPORTATION

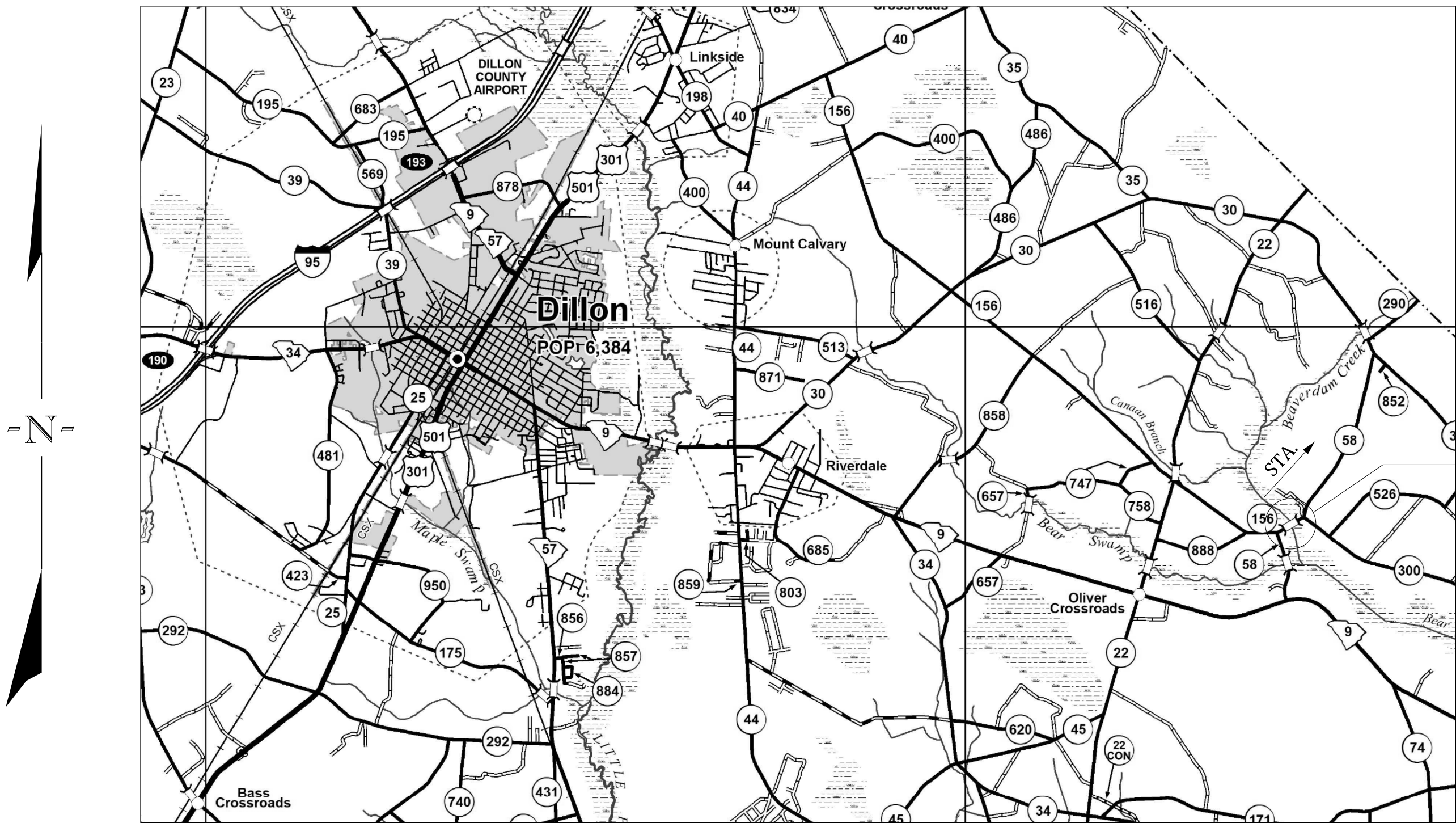


CONCEPTUAL PLANS  
FOR  
DILLON COUNTY  
PROJECT ID P043715  
ROUTE S-58 (GADDYS MILL ROAD)  
REPLACE BRIDGE OVER BEAVERDAM CREEK

DESIGN REFERENCE FOR THESE PLANS IS THE:

LVB

SUPPLEMENTAL DESIGN CRITERIA FOR  
LOW VOLUME BRIDGE REPLACEMENT PROJECTS



APPROXIMATE LOCATION OF BRIDGE IS

LATITUDE 34°- 23' - 36" N  
LONGITUDE 79°- 14' - 21" W

SITE LOCATION

LAYOUT

3 DAYS BEFORE DIGGING IN  
SOUTH CAROLINA  
CALL 811  
SOUTH CAROLINA 811 (SC811)  
WWW.SC811.COM  
ALL UTILITIES MAY NOT BE A MEMBER OF SC811

ASSET ID NOT ASSIGNED

TRAFFIC DATA

2026 ADT 80 V.P.D.  
2046 ADT 160 V.P.D.  
TRUCKS 9 %

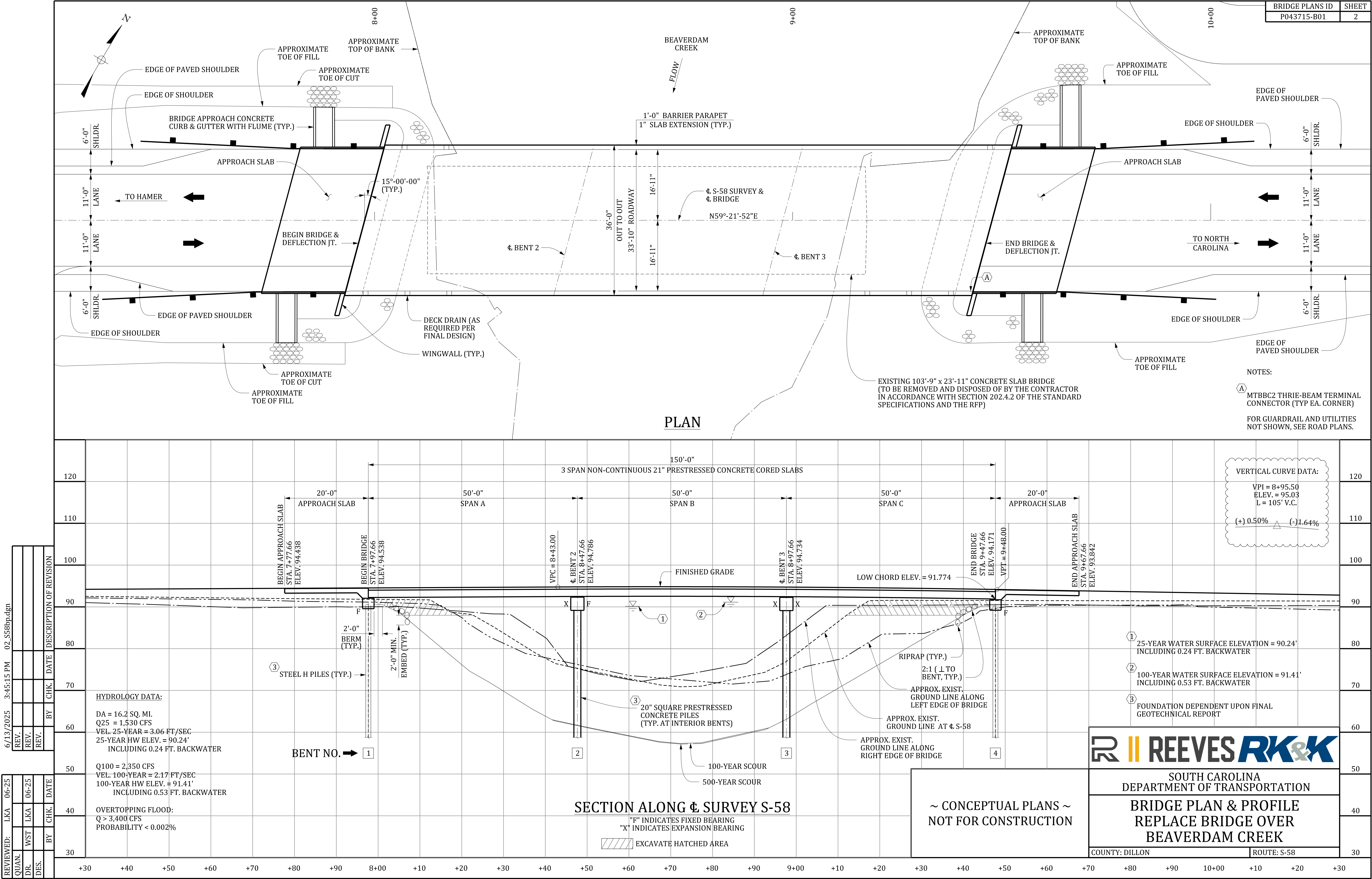
NET LENGTH OF ROADWAY	0.000	MILES
NET LENGTH OF BRIDGES	0.029	MILES
NET LENGTH OF PROJECT	0.029	MILES
LENGTH OF EXCEPTIONS	0.000	MILES
GROSS LENGTH OF PROJECT	0.029	MILES

NOTE: EXCEPT AS MAY OTHERWISE BE SPECIFIED ON THE PLANS OR IN THE SPECIAL PROVISIONS, ALL MATERIALS AND WORKMANSHIP ON THIS PROJECT SHALL CONFORM TO THE SOUTH CAROLINA DEPARTMENT OF TRANSPORTATION STANDARD SPECIFICATIONS FOR HIGHWAY CONSTRUCTION AND THE STANDARD DRAWINGS FOR ROAD CONSTRUCTION IN EFFECT AT THE TIME OF LETTING.





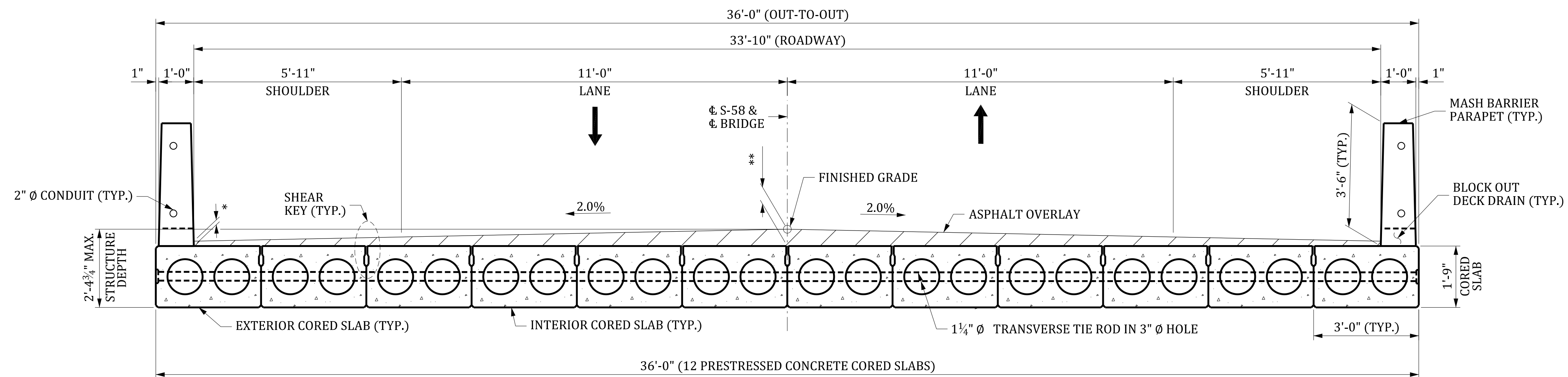
6/13/2025 3:45:15 PM 02_S588p.dgn		REV.		BY		CHK		DATE		DESCRIPTION OF REVISION	
REVIEWED:	LKA	06-25	QUAN.			DR.	WST	LKA	06-25	DES.	











\*2" MIN. AT MID SPAN  
3<sup>11</sup>/<sub>16</sub>" MAX. AT  $\Phi$  BEARING

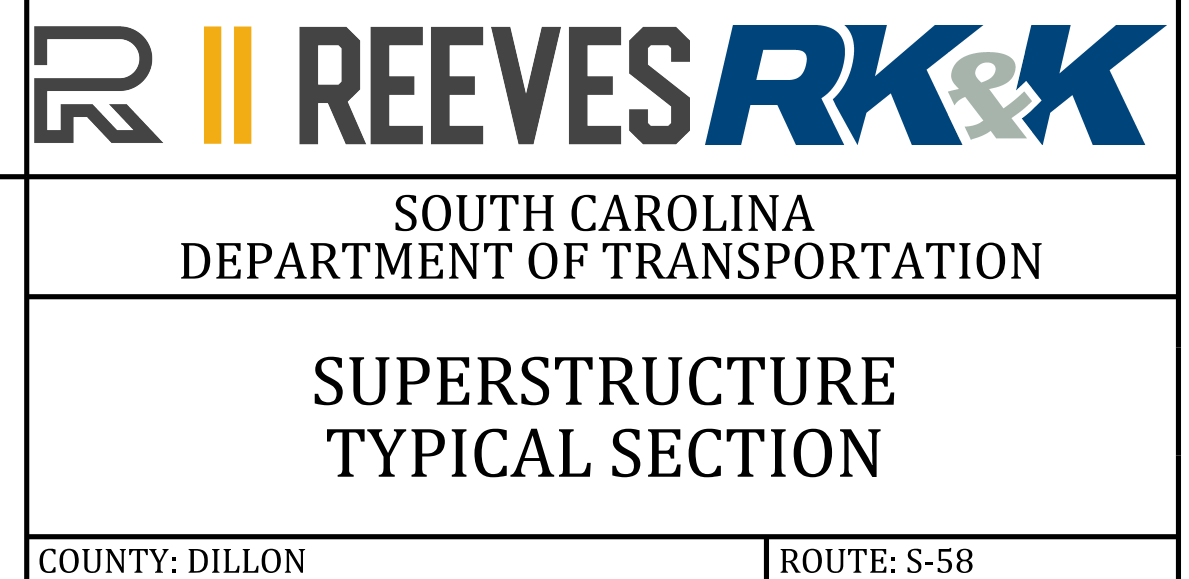
\*\*  
6 $\frac{1}{16}$ " MIN. AT MIDSPAN  
7 $\frac{3}{4}$ " MAX. AT  $\phi$  BEARING

### TYPICAL SECTION

6/13/2025	3:52:21 PM	05_S58typ.dgn
REV.		
REV.		
	BY	CHK.
		DATE
		DESCRIPTION OF REVISION

REVIEWED:	LKA	06-25
QUAN.		
DR.	CBH	06-25
DES.		
	BY	CHK. DATE

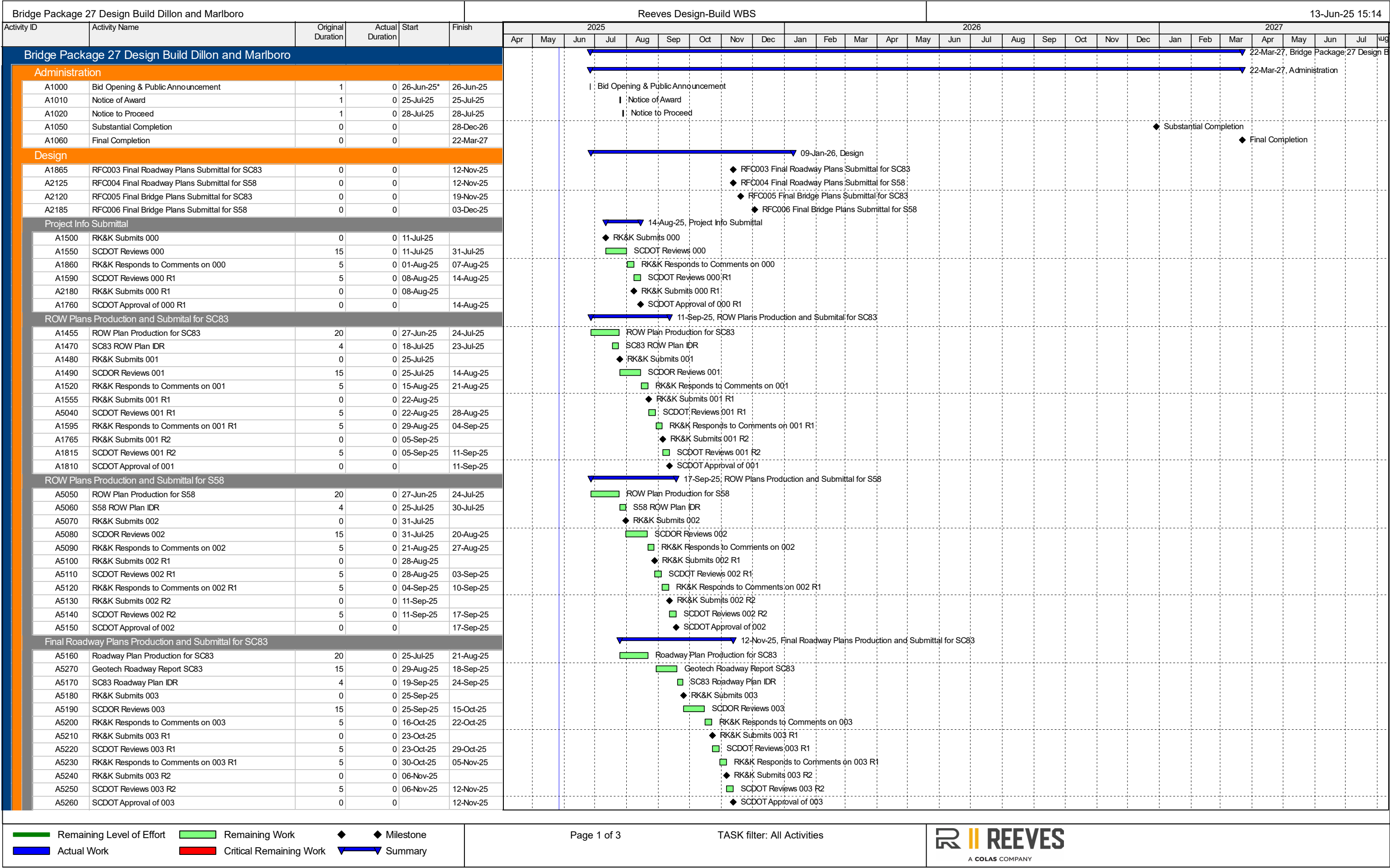
~ CONCEPTUAL PLANS ~  
NOT FOR CONSTRUCTION



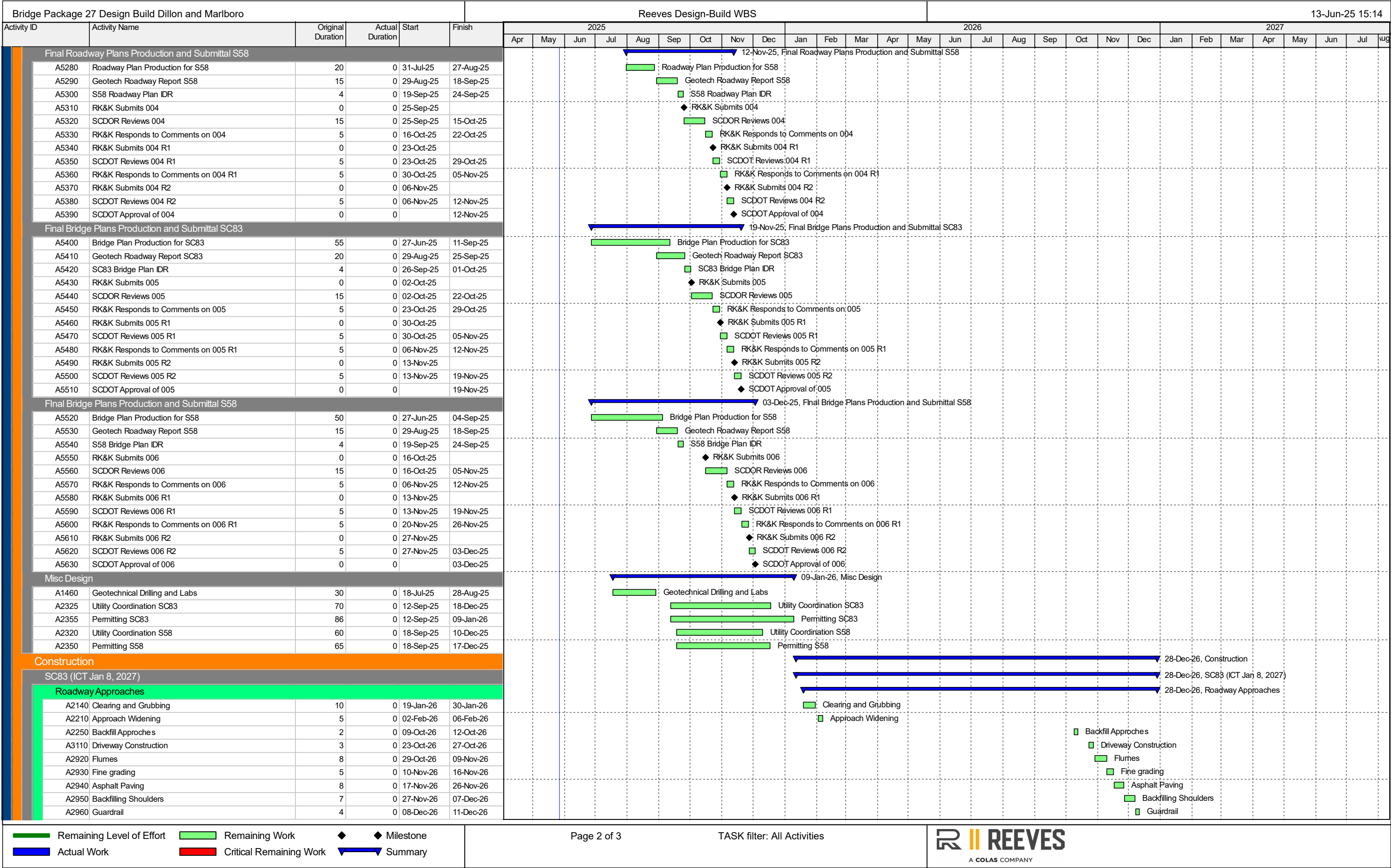


## Appendix A.3 - CPM Schedule









[illegible]



## Appendix B - Required Forms, and Confidential and Proprietary Information Page List



## 12. STIPEND ACKNOWLEDGEMENT FORM

### Stipend Acknowledgement Form

#### Bridge Package 27 Dillon and Marlboro Counties

Proposer: Reeves Construction Company

ADDRESS: 292 Plennons Rd Duncan, SC 29334

The undersigned Proposer, hereby:

☐

Waives the stipend for this Project.

☒

Accepts the stipend for this Project.

By accepting the stipend for this Project, Proposer agrees:

- 1) to execute and include the Stipend Agreement in Article XIII of the RFP with its RFP response;
- 2) to submit an invoice with FEIN number for the stipend amount to the SCDOT POC after SCDOT's posting of the Notice of Award on SCDOT's Design-Build Website.;
- 3) to transfer all rights to its Work Product used to develop the Proposal as of the date of this acknowledgement. "Work Product" means all submittals, including ideas, innovations, solutions, methods, processes, design concepts, materials, electronic files, marked up drawings, cross sections, quantity lists and intellectual property, made by Proposer during the RFP process, including the Proposal, exchange of information during the pre-Proposal and post-Proposal period.

SCDOT will pay the stipend to each eligible unsuccessful Proposer, who has signed a Stipend Agreement, within ninety (90) days after execution of the Contract or the decision to not award a contract.

6-3-25  
Date

Chris Loe  
Proposer

C Robert Loe  
Print Name



### 13. STIPEND AGREEMENT

**STIPEND AGREEMENT**  
**Project ID: 5570770**  
**Bridge Package 27**  
**Dillon and Marlboro Counties**

**THIS STIPEND AGREEMENT** (the "Agreement") is made and entered into as of the \_\_\_\_ day of \_\_\_\_\_, 20\_\_, by and between the SOUTH CAROLINA DEPARTMENT OF TRANSPORTATION (hereinafter "SCDOT"), and Recon Construction Company ("Proposer"), with reference to the following facts:

SCDOT issued a Request for Proposal ("RFP") for design and construction of the above-referenced Design-Build Project ("Project"), pursuant to procurement authority granted in Section 57-5-1625 of the S.C. Code of Laws, 1976, as amended. The RFP provided for payment of stipends as provided herein. Capitalized terms used, but not defined, have the meanings ascribed in the RFP.

**NOW, THEREFORE**, Proposer hereby agrees as follows:

#### **1. Work Product.**

**1.1** Proposer shall prepare and submit a responsible and responsive Technical Proposal and Cost Proposal that conforms in all material respects to the requirements and provisions of the RFP, as determined by SCDOT, and are timely received by SCDOT in accordance with the RFP Milestone Schedule.

**1.2** By signing this Stipend Agreement, Proposer agrees to transfer full and complete ownership to SCDOT of all Work Product. The Work Product (as defined below) shall become the property of SCDOT without restriction or limitation on its use, without further compensation or consideration, and can be used in connection with this Project or any future projects by SCDOT. Neither Proposer nor any of its team members shall copyright any of the material developed under this Agreement.

**1.3** The term "Work Product" shall mean the Proposal and all material, electronic files, marked up drawings, cross sections, quantity lists, submittals, ideas, innovations, solutions, methods, processes, design concepts, Trade Secrets or confidential information, and intellectual property, made by or produced for Proposer in the development and submission of the Technical and Cost Proposal, including exchanges of information during the pre-Proposal and post-Proposal period.

#### **2. Compensation and Payment.**

**2.1** A stipend to Proposer for the Work Product described herein shall be \$20,000 and is payable to Proposer that was determined to be responsible and (1) submitted a responsive Technical Proposal and responsive Cost Proposal to the RFP which is not selected for award of this Project, or (2) was awarded the Contract but the Contract was terminated by SCDOT for convenience after the Submittal of Proposal Due Date (See Final RFP Milestone schedule) but prior to the Notice to Proceed #1. Responsibility of Proposers and responsiveness of the Technical Proposal and Cost Proposal will be determined by SCDOT as a condition of payment.

**2.2** SCDOT will pay the stipend to Proposer as follows, subject (as applicable) to the following conditions:

- (a) Proposer has submitted this signed Stipend Agreement, unchanged with its response to the RFP.
- (b) After posting of the Notice of Award on SCDOT's Design-Build Website, Proposer has submitted to SCDOT an invoice, with FEIN Number, for the Stipend amount.
- (c) After execution of the Contract or the decision not to award a contract, SCDOT will pay the invoice for the stipend amount to the unsuccessful Proposer meeting the criteria of Section 2.1 within 90 calendar days of receipt of the invoice from Proposer.
- (d) If the procurement is suspended or cancelled prior to the Proposal Due Date (see FINAL RFP Milestone schedule), no stipend will be paid to Proposer.
- (e) After the submittal of Proposals, but prior to award, if the procurement is cancelled, all Proposers that provide a responsive Technical Proposal and Cost Proposal to the final RFP and submitted a signed Stipend Agreement with their RFP shall receive the stipend
- (f) In the event of a Best and Final Offer, only one stipend will be paid to each Proposer that executed a Stipend Agreement and met the other criteria and conditions herein.
- (g) No stipends will be paid for submitting RFQ responses.
- (h) No stipends will be paid to a Proposer who withdraws at any time from this procurement.

2.3 Acceptance by the Proposer of payment of the stipend amount from SCDOT shall constitute a waiver by Proposer of any and all right, equitable or otherwise, to bring any claim in connection with this procurement, procurement process, award of the Contract, or cancellation of this procurement.

2.4 The Proposer awarded the contract shall be not eligible to receive a stipend.

2.5 If Proposer elects to waive payment of the stipend, SCDOT will not use the ideas or information contained in that Proposer's Proposal for this Project. However, the Proposer's Proposal will be subject to the South Carolina Freedom of Information Act.

### **3. Indemnities.**

3.1 Subject to the limitations contained in Section 3.2, Proposer shall indemnify, protect and hold harmless SCDOT and its directors, officers, employees and contractors from, and Proposer shall defend at its own expense, all claims, costs, expenses, liabilities, demands, or suits at law or equity arising, in whole or in part, from the negligence or willful misconduct of Proposer or any of its agents, officers, employees, representatives or subcontractors or breach of any of Proposer's obligations under this Agreement.

3.2 This indemnity shall not apply with respect to any claims, demands or suits arising from use of the Work Product by SCDOT.

### **4. Compliance With Laws.**

4.1 Proposer shall comply with all federal, state, and local laws, ordinances, rules, and regulations applicable to the work performed or paid for under this Agreement and covenants and agrees that it and its employees shall be bound by the standards of conduct provided in applicable laws, ordinances, rules, and regulations as they relate to work performed under this Agreement. Proposer agrees to incorporate the provisions of this paragraph in any subcontract into which it might enter with reference to the work performed pursuant to this Agreement.

4.2 The Proposer agrees (a) not to discriminate in any manner against an employee or applicant for employment because of race, color, religion, creed, age, sex, marital status, national origin, ancestry or disability of a qualified individual with a disability; (b) to include a provision similar to that contained in subsection (a) in any subcontract; and (c) to post and to cause subcontractors to post in conspicuous places available to employees and applicants for employment, notices setting forth the substance of this clause.

### **5. Assignment.**

Proposer shall not assign this Agreement without SCDOT's prior written consent. Any assignment of this Agreement without such consent shall be null and void.

### **6. Miscellaneous.**

6.1 Proposer and SCDOT agree that Proposer, its team members, and their respective employees are not agents of SCDOT as a result of this Agreement.

6.2 This Agreement, together with the RFP, as amended from time to time, the provisions of which are incorporated herein by reference, embodies the entire agreement of the parties. There are no promises, terms, conditions, or obligations other than those contained herein or in the RFP, and this Agreement shall supersede all previous communications, representation, or agreements, either oral or written, between the parties hereto.

6.3 It is understood and agreed by the parties hereto that if any part, term, or provision of this Agreement is by the courts held to be illegal or in conflict with any law of the State of South Carolina, the validity of the remaining portions or provisions shall not be affected, and the rights and obligations of the parties shall be construed and enforced as if the Agreement did not contain the particular part, term, or provisions to be invalid.

6.4 This Agreement shall be governed by and construed in accordance with the laws of the State of South Carolina.



IN WITNESS WHEREOF, the parties have executed this Agreement as of the date first written above.

Witness:

\_\_\_\_\_

Recommended:

\_\_\_\_\_  
{INSERT NAME}

SOUTH CAROLINA DEPARTMENT  
OF TRANSPORTATION

By: \_\_\_\_\_  
{INSERT NAME}

Preconstruction Alternative Delivery Engineer

Proposer

\_\_\_\_\_  
*Christy Don*

## 11. EQUAL EMPLOYMENT OPPORTUNITY CERTIFICATION

### (COMPLETE THIS SECTION FOR FEDERAL PROJECTS ONLY) EQUAL EMPLOYMENT OPPORTUNITY PERFORMANCE

Select the Certification that applies to the PROPOSER:

Certification (1) ☒ or Certification (2) ☐

Select the appropriate responses in the applicable Certification:

Certification (1): Pursuant to 41 C.F.R. §60-1.7(b)(1), Previous Equal Employment Opportunity Performance Certification, as the Prospective Prime Contractor, I HEREBY CERTIFY THAT I:

(a) (HAVE) / HAVE NOT developed and filed an Affirmative Action Program pursuant to 41 C.F.R. §60-2 and/or 60-4;

(b) (HAVE) / HAVE NOT participated in a previous contract or subcontract subject to the equal opportunity clause;

(c) (HAVE) / HAVE NOT filed with the Joint Reporting Committee, the Director of Office of Federal Contract Compliance, or the Equal Employment Opportunity Commission, all reports due under the applicable filing requirements,

OR

Certification (2): I, HEREBY CERTIFY that as the Prospective Prime Contractor submitting this Proposal, (CLAIM / DO NOT CLAIM) exemption from the submission of the Standard Form 100 (EEO-1) due to the fact that it employs a total of less than fifty (50) employees under C.F.R. §60-1.7, or qualifies for an exempted status under 41 C.F.R. §60-1.5.

I FURTHER CERTIFY that the above Certification will be made part of any Subcontract Agreement, or other agreement involved with this project.

Executed on 6/3, 20 25.

Signed: Christy Dean  
(Officer/PROPOSER)

Title: Vice President

Company: Reeves Construction Company

Address: 248 Plemmons Rd  
Duncan, SC 29734

Note: The above certification is required by the Equal Employment Opportunity Regulations of the Secretary of Labor (41 CFR 60-1.7(b)(1)), and must be submitted by PROPOSERS only in connection with contracts which are subject to the equal opportunity clause. Contracts that are exempt from the equal opportunity clause are set forth in 41 CFR 60-1.5. (Generally, only contracts of \$10,000 or under are exempt.)

Currently, Standard Form 100 (EEO-1) is the only report required by Executive Orders or their implementing regulations.

Proposers, Primary Members, or proposed Subcontractors (any tier) and Consultants who have participated in a previous contract subject to the Executive Orders and have not filed the required reports shall note that 41 CFR 60-1.7(b)(1) prevents the award of contracts and subcontracts unless such contractor submits a report covering the delinquent period or such other period specified by the Federal Highway Administration or by the Director, Office of Federal Contract Compliance, U.S. Department of Labor.



## 10. NON-COLLUSION CERTIFICATION

### NON-COLLUSION CERTIFICATION

Project ID: 5570770

IN ACCORDANCE WITH THE PROVISIONS OF S.C. CODE ANN. §§ 39-3-10 ET. SEQ., 39-5-10 ET. SEQ., 15 U.S.C. §45; 23 C.F.R. §635.112(F); AND 28 U.S.C. §1746, I HEREBY ACKNOWLEDGE THAT I AM AN OFFICER OF THE PROPOSER FIRM AND, UNDER PENALTY OF PERJURY UNDER THE LAWS OF THE UNITED STATES AND SOUTH CAROLINA, DECLARE, BY MY CERTIFICATION BELOW, THAT THE FOLLOWING IS TRUE AND CORRECT, AND FURTHER, THAT THIS JOINT-VENTURE, FIRM, PARTNERSHIP, ASSOCIATION OR CORPORATION, OR ANY OTHER LEGAL ENTITY HAS NOT, EITHER DIRECTLY OR INDIRECTLY, ENTERED INTO ANY AGREEMENT, PARTICIPATED IN ANY COLLUSION, OR OTHERWISE TAKEN ANY ACTION IN RESTRAINT OF FREE COMPETITIVE BIDDING IN CONNECTION WITH THE SUBMISSION OF A BID PROPOSAL ON THE ABOVE REFERENCED PROJECT.

BY CHECKING THIS BOX ☒, I CERTIFY THAT I HAVE READ, UNDERSTAND, ACCEPT, AND ACKNOWLEDGE ALL OF THE ABOVE STATEMENTS.

Executed on 6/7/25  
(Date)

Signed: Philip Dan  
(Officer/Proposer)

Vice President  
(Title)

248 Plemmons Rd.  
(Address)

Duncan, SC 29334



South Carolina  
Department of Transportation

## NOTICE OF RECEIPT

Project Name *Bridge Package 27*  
Design-Build – Project ID XXXX *5570770*  
XXXXX County  
*Dillon and Marlboro*  
Addendum X *1*

The information in this addendum shall be made part of the contract documents. PROPOSERS are instructed to incorporate the information into the previously provided RFP documents.

PROPOSERS are required to sign this document and enclose it with their Technical Proposal. Receipt of this signed document by The South Carolina Department of Transportation serves as confirmation that the PROPOSER has received and incorporated this Addendum into the contract documents.

### Confirmation Statement:

I, the PROPOSER confirm that I have received this addendum package and have incorporated the information provided in the addendum into the contract documents.

*C. Robert Loar*  
PROPOSER's Signature

*6-11-25*  
Date

*C Robert Loar*  
Printed Name

For: *Reeves Construction Company*  
Design-Build Team Name







South Carolina  
Department of Transportation

## NOTICE OF RECEIPT

Bridge Package 27  
Design-Build – Contract ID 5570770  
Dillon and Marlboro Counties

### Addendum 2

The information in this addendum shall be made part of the contract documents. PROPOSERS are instructed to incorporate the information into the previously provided RFP documents.

PROPOSERS are required to sign this document and enclose it with their Technical Proposal. Receipt of this signed document by The South Carolina Department of Transportation serves as confirmation that the PROPOSER has received and incorporated this Addendum into the contract documents.

#### Confirmation Statement:

I, the PROPOSER confirm that I have received this addendum package and have incorporated the information provided in the addendum into the contract documents.

  
PROPOSER's Signature

6-12-25  
Date

C Robert Lear  
Printed Name

For: Reever Construction Company  
Design-Build Team Name

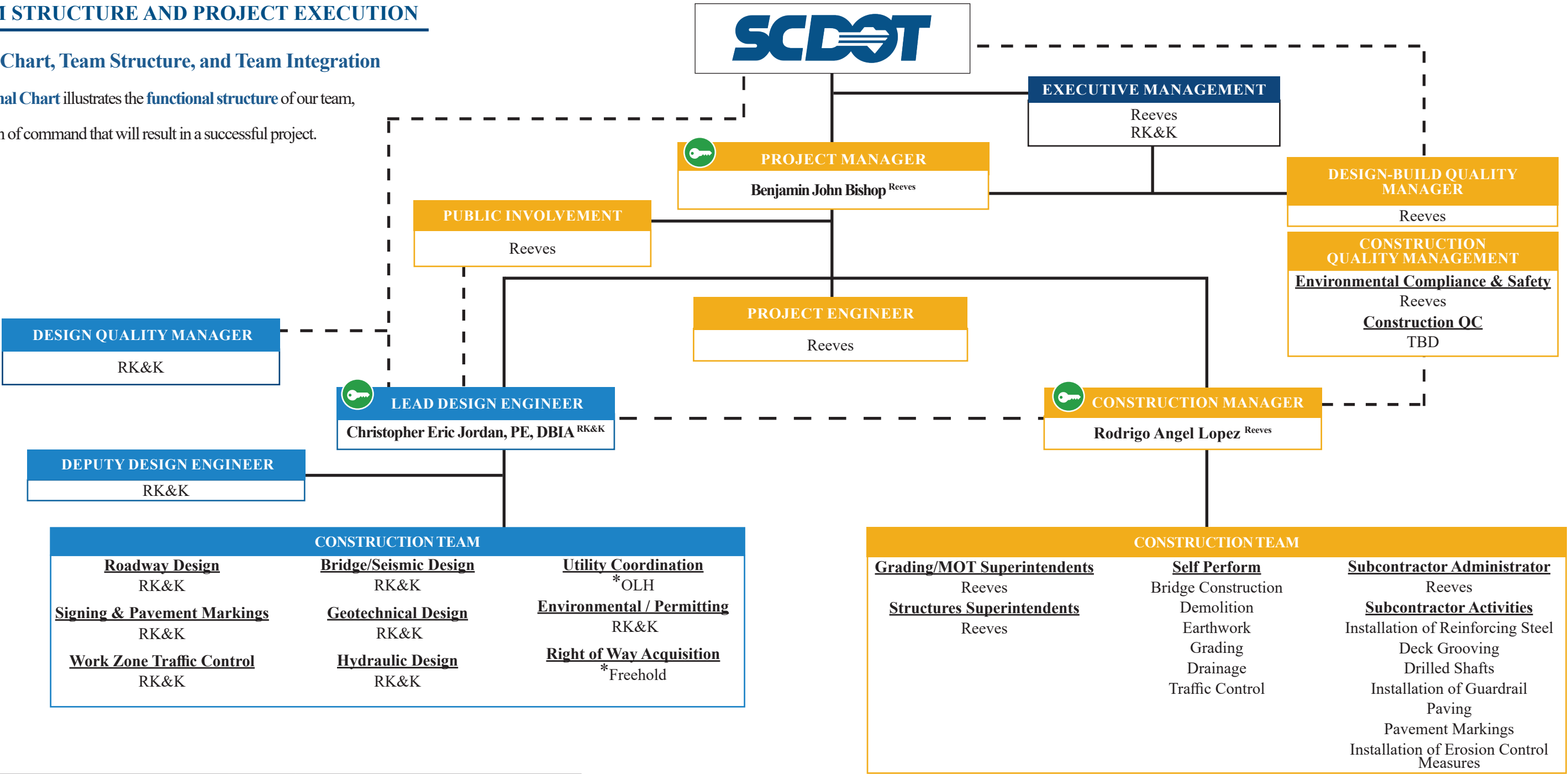




TEAM STRUCTURE AND PROJECT EXECUTION

Organization Chart, Team Structure, and Team Integration

This **Organizational Chart** illustrates the **functional structure** of our team, establishing a chain of command that will result in a successful project.



Team Members			
Reeves	Reeves Construction Company	Freehold	Freehold Focus, LLC
RK&K	Rummel, Klepper & Kahl, LLP	OLH	OLH, Inc.
	RFQ Key Individuals	*	Disadvantaged Business Enterprise (DBE)
—	Direct Report	----	Communication





A COLAS COMPANY

June 11, 2025

Renee Frazier  
Office of Project Delivery  
South Carolina Department of Transportation  
955 Park Street, Room 101  
Columbia, South Carolina 29201

RE: Bridge Package 27  
Contract ID 5570770 Dillon and Marlboro Counties, South Carolina

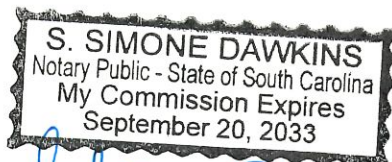
Dear Ms. Frazier:

I, C. Robert Loar, in my capacity as Vice President of Reeves Construction Company, affirm that the Key Individuals represented in our Project Organization Chart in our SOQ for the referenced project shall be available to construct the Bridge Package 27 Design-Build Project, barring any unforeseen circumstances, as required in the RFP at the earliest of the times and durations identified in the RFQ and RFP, until expiration of the Warranty Period, or such earlier date as the Contract is terminated.

Respectfully Submitted,

C. Robert Loar  
Vice President

Ben Bishop  
Design Build Project Manager



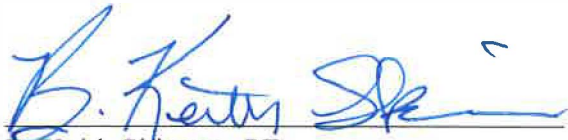
6/11/2025

June 16, 2025

RE: Bridge Package 27 - Design-Build Project - Contract ID 5570770

**7.f. Updated Organization Chart and Notarized Statement of Availability of Key Individuals**


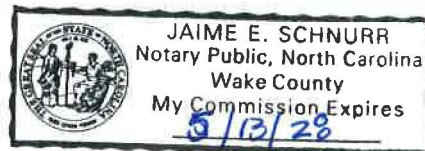
This serves as a written statement that RK&K's Key Individual, Christopher Eric Jordan, PE, DBIA, who is identified as the Lead Design Engineer on the original organizational chart submitted with the SOQ, will be available, barring any unforeseen circumstances, at the earliest of the times and durations identified in the RFQ and RFP, until expiration of the Warranty Period, or such earlier date as the Contract is terminated or SCDOT releases, in writing, such Key Individual from this requirement.



B. Keith Skinner, PE

Partner

Rummel, Klepper & Kahl, LLP

  
Notary Signature

Expiration 5/13/28





### **g. Confidential and Proprietary Information Page List**

Reeves Construction Company (Reeves) (Contractor) and Rummel, Klepper & Kahl, LLP (RK&K) (Lead Designer) have identified several items that we consider confidential and proprietary information. Per Section 4.4 of the RFP, the following is a list of page numbers that contain confidential and/or proprietary information.

#### Technical Proposal Narrative

- Pages 4 and 9

#### Appendix B - Required Forms

- Quality Credit Matrix

As we have designated a portion of our Proposal as “Confidential,” we have submitted one complete copy of our Proposal from which the designated “Confidential” information has been redacted, i.e. the redacted copy. The redacted copy reflects the same pagination as the original, shows the empty space from which information was redacted, and has been submitted electronically. Except for the information concealed, the redacted copy is identical to its original Proposal, and the SCDOT POC is able to view, search, copy and print the redacted copy.



South Carolina Department of Transportation

Columbia, South Carolina

**South Carolina Department**

**Of**

**Transportation**

**Prime Contractor**

**Prequalification Certificate**

This Certifies that your company has complied with the rules and regulations of the Department and the State of South Carolina, and subject to the rules and regulations for a prime contractor, is declared eligible to submit a bid and be awarded any construction contract issued by the Department, subject to obtaining proper bonds and insurance acceptable to the Department and complying with all other statutory and contract requirements.

**ALL BIDS SUBMITTED TO THE DEPARTMENT MUST BE IN THE NAME AS SHOWN BELOW.**

**VENDOR NAME**

**REEVES CONSTRUCTION COMPANY**

**Vendor ID:**

**1RE005**

**Date Issued:**

**May 23, 2024**

**Expiration Date:**

**June 30, 2025**

**Approved By:**

A handwritten signature in black ink is written over a horizontal line. The signature is stylized and appears to be "D. J. [unclear]". Below the signature, the title "Prequalification and Contracts Coordinator" is printed in a bold, black, sans-serif font.

**Prequalification and Contracts Coordinator**



Number	Description	Added Value/Benefits	Cost/Schedule Impacts	Self-imposed Assurance



## Technical Proposal



250 Plemmons Road,  
Duncan, SC 29334



864.416.0200



[reevescc.com](http://reevescc.com)