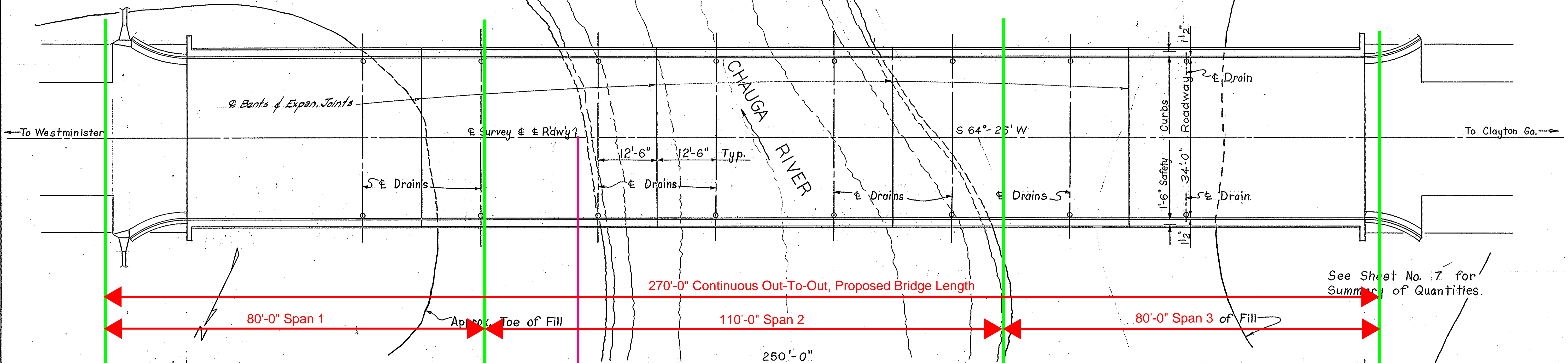
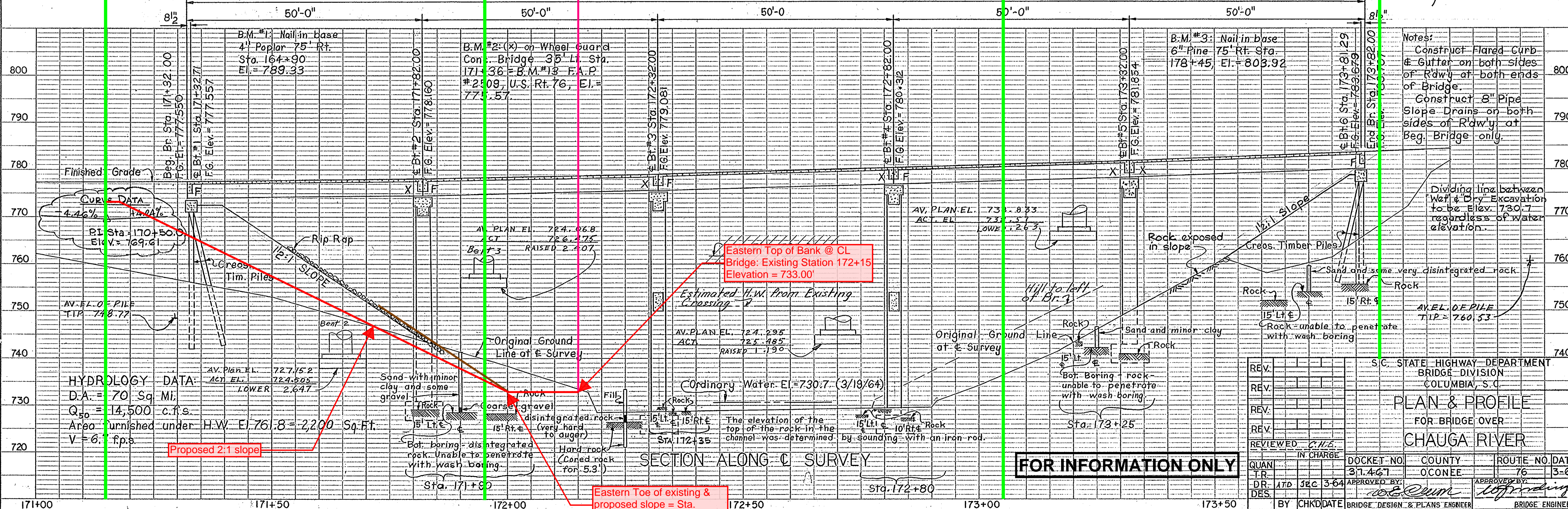


Note:  
 Rails, Posts, & Post bases  
 not shown.  
 For Drain Details see Sheet No. 17.



See Sheet No. 7 for  
 Summary of Quantities.



Notes:  
 Construct Flared Curb & Gutter on both sides of Rdwy at both ends of Bridge.  
 Construct 8" Pipe Slope Drains on both sides of Rdwy at Beg. Bridge only.

Dividing line between Wet & Dry Excavation to be Elev. 730.7 regardless of water elevation.

S.C. STATE HIGHWAY DEPARTMENT  
 BRIDGE DIVISION  
 COLUMBIA, S.C.  
**PLAN & PROFILE**  
 FOR BRIDGE OVER  
**CHAUGA RIVER**

REV.				
REV.				
REV.				
REV.				
REVIEWED	CHE			
IN CHARGE				
QUAN. T.R.		DOCKET NO.	COUNTY	ROUTE NO. DATE
DR. ATD	3-64	37.467	OCONEE	76 3-64
DES.		APPROVED BY		
BY	CHKD	DATE	BRIDGE DESIGN & PLANS ENGINEER	BRIDGE ENGINEER

**FOR INFORMATION ONLY**

PLAN  
 SURVEYED, PLOTTED, CHECKED, BY DATE  
 NOTE BOOK NO. OF WAY CHECKED

PROFILE  
 SURVEYED, PLOTTED, CHECKED, BY DATE  
 NOTE BOOK NO. OF WAY CHECKED