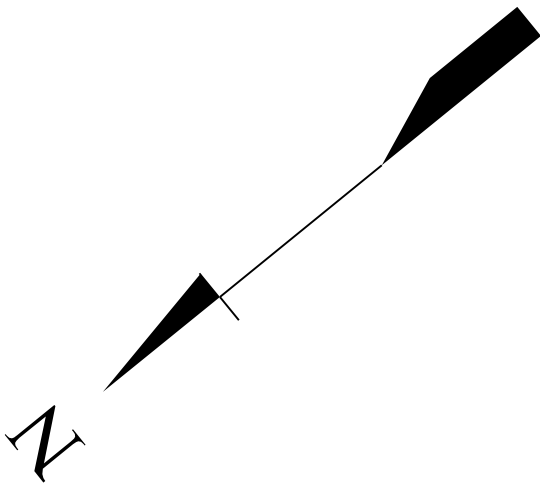
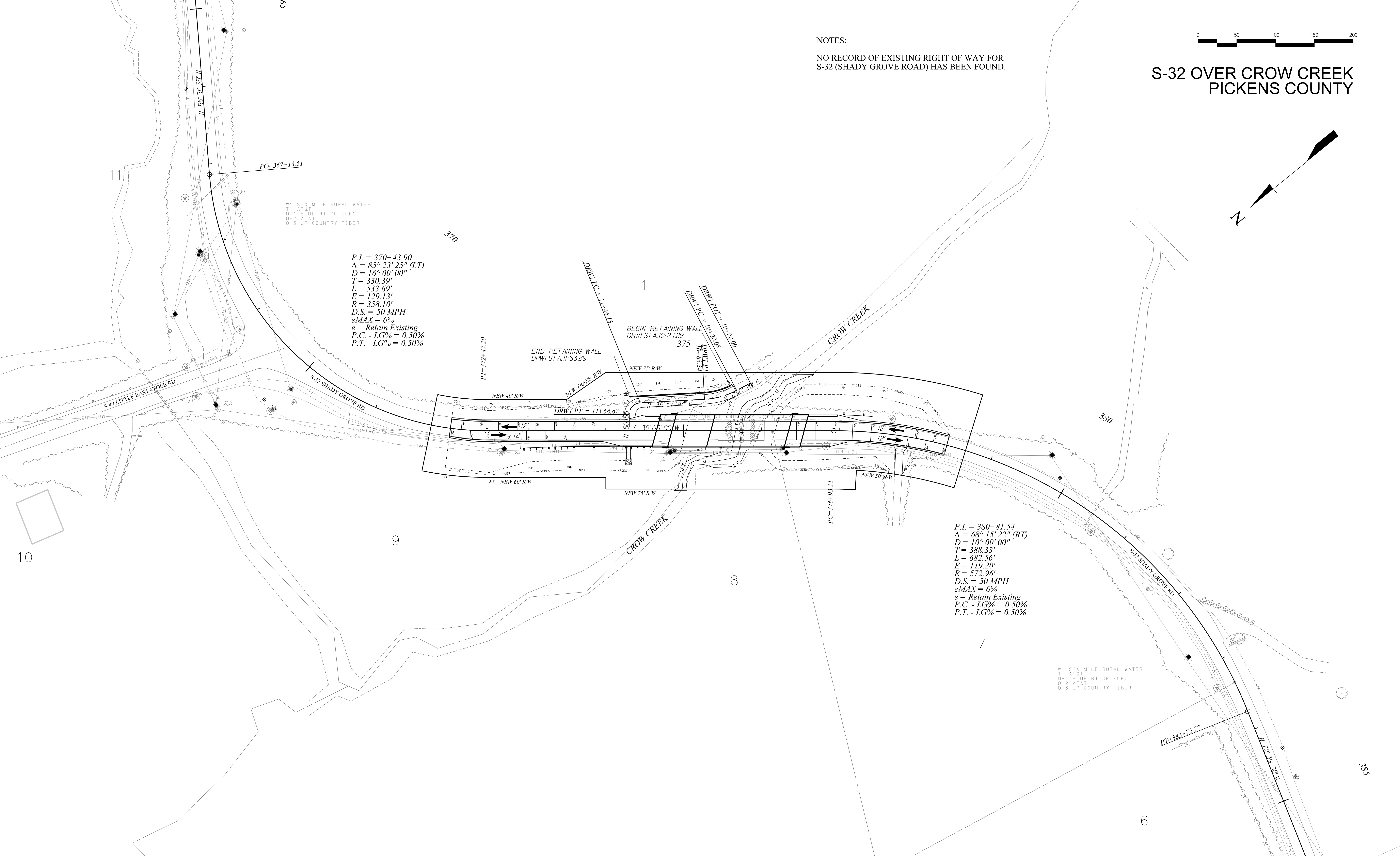


S-32 OVER CROW CREEK
PICKENS COUNTY



NOTES:
NO RECORD OF EXISTING RIGHT OF WAY FOR
S-32 (SHADY GROVE ROAD) HAS BEEN FOUND.



P.I. = 370+43.90
 $\Delta = 85^\circ 23' 25''$ (LT)
 $D = 16^\circ 00' 00''$
 $T = 330.39'$
 $L = 533.69'$
 $E = 129.13'$
 $R = 358.10'$
 $D.S. = 50$ MPH
 $eMAX = 6\%$
 $e =$ Retain Existing
 $P.C. - LG\% = 0.50\%$
 $P.T. - LG\% = 0.50\%$

P.I. = 380+81.54
 $\Delta = 68^\circ 15' 22''$ (RT)
 $D = 10^\circ 00' 00''$
 $T = 388.33'$
 $L = 682.56'$
 $E = 119.20'$
 $R = 572.96'$
 $D.S. = 50$ MPH
 $eMAX = 6\%$
 $e =$ Retain Existing
 $P.C. - LG\% = 0.50\%$
 $P.T. - LG\% = 0.50\%$

W1 SIX MILE RURAL WATER
T1 AT&T
OH1 BLUE RIDGE ELEC
OH2 AT&T
OH3 UP COUNTRY FIBER