

NO.	REVISIONS	BY	DATE

**THOMAS & HUTTON**
Engineering | Surveying | Planning | GIS | Consulting

50 Park of Commerce Way
Savannah, GA 31405 • 912.234.5300
www.thomasandhutton.com

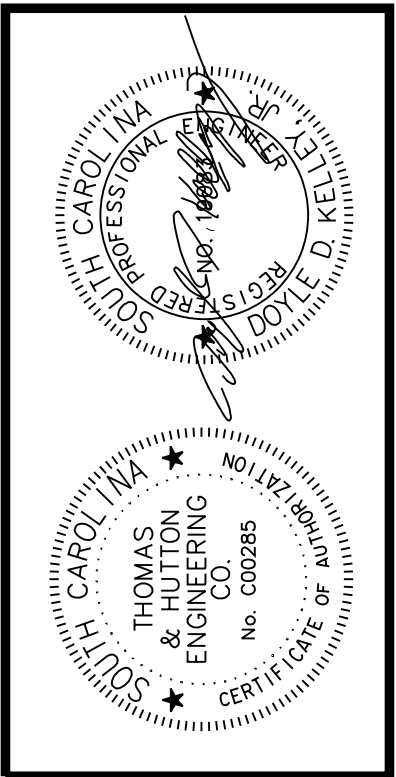
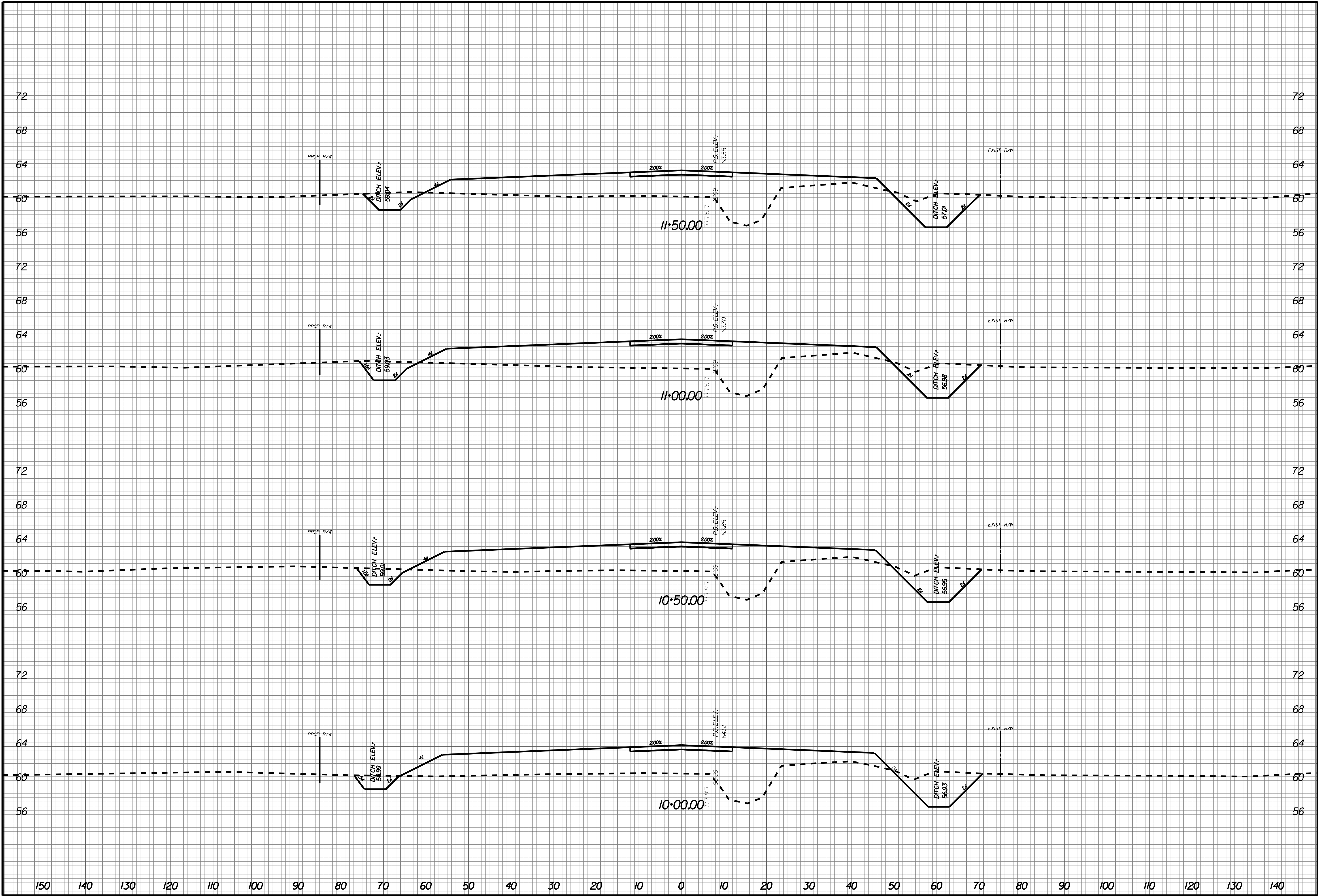
BERKELEY COUNTY
BERKELEY COUNTY, SC

CENTERLINE ROAD

CROSS SECTIONS

JOB NO: J-25644.0005
DATE:
DRAWN:
DESIGNED:
REVIEWED:
APPROVED:
SCALE: AS NOTED

X001A



NO.	REVISIONS	BY	DATE

THOMAS & HUTTON
Engineering | Surveying | Planning | GIS | Consulting

50 Park of Commerce Way
Savannah, GA 31405 • 912.234.5300
www.thomasandhutton.com

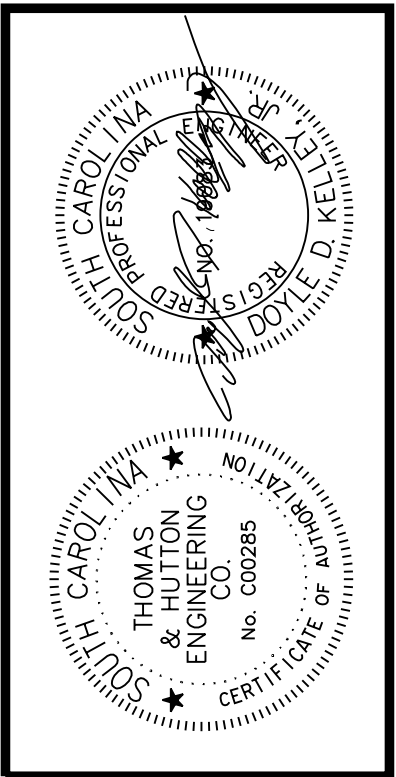
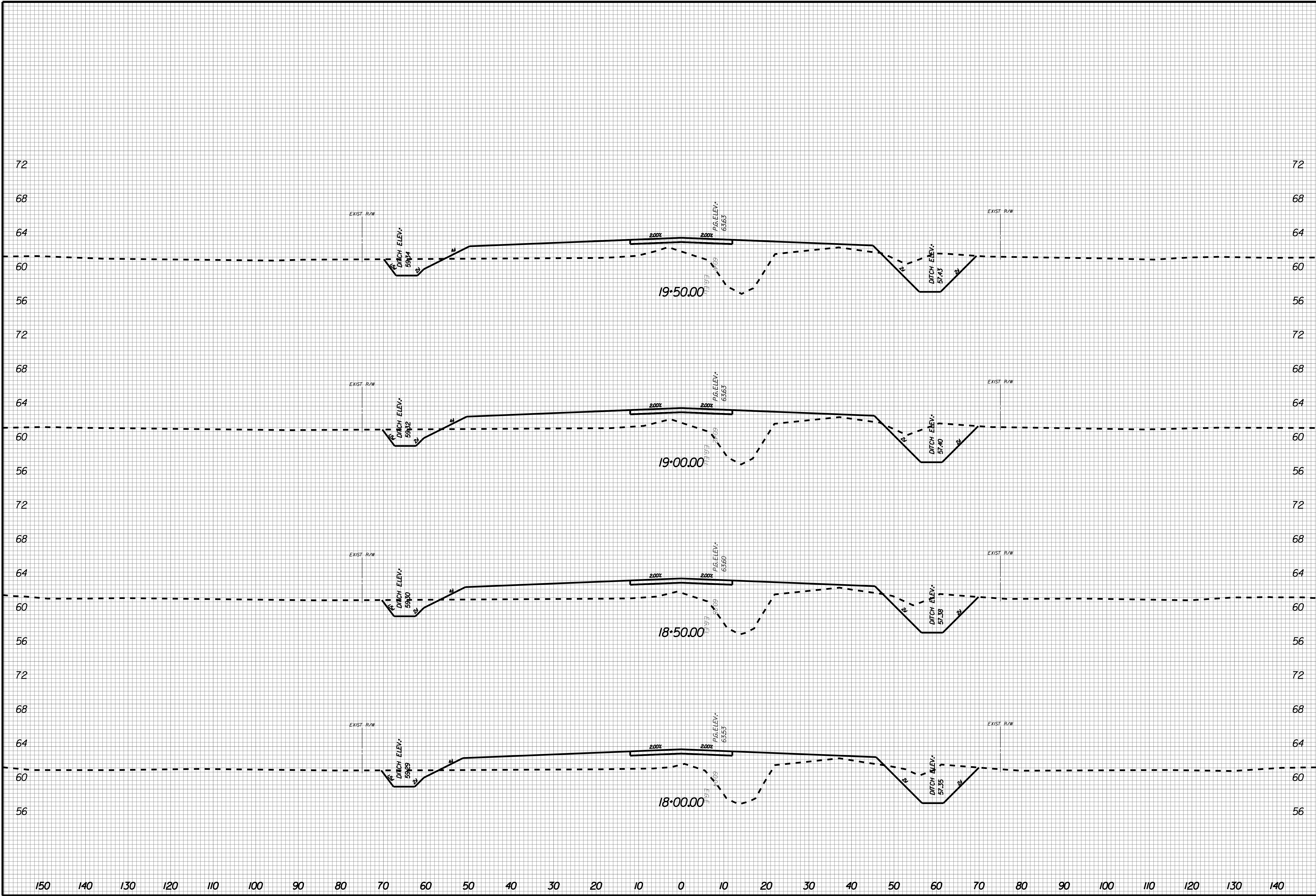
BERKELEY COUNTY
BERKELEY COUNTY, SC

CENTERLINE ROAD

CROSS SECTIONS

JOB NO:	J-25644.0005
DATE:	
DRAWN:	
DESIGNED:	
REVIEWED:	
APPROVED:	
SCALE:	AS NOTED

X002



NO.	REVISIONS	BY	DATE

**THOMAS & HUTTON**
Engineering | Surveying | Planning | GIS | Consulting

50 Park of Commerce Way
Savannah, GA 31405 • 912.234.5300
www.thomasandhutton.com

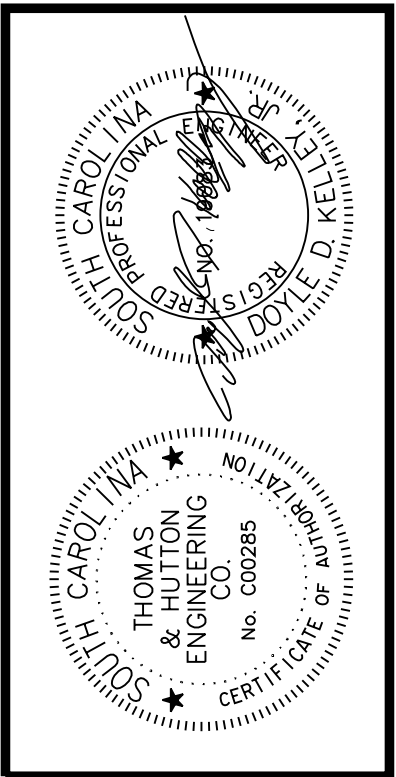
BERKELEY COUNTY
BERKELEY COUNTY, SC

CENTERLINE ROAD

CROSS SECTIONS

JOB NO:	J-25644.1005
DATE:	
DRAWN:	
DESIGNED:	
REVIEWED:	
APPROVED:	
SCALE:	AS NOTED

X006

[illegible]

THOMAS & HUTTON
Engineering | Surveying | Planning | GIS | Consulting

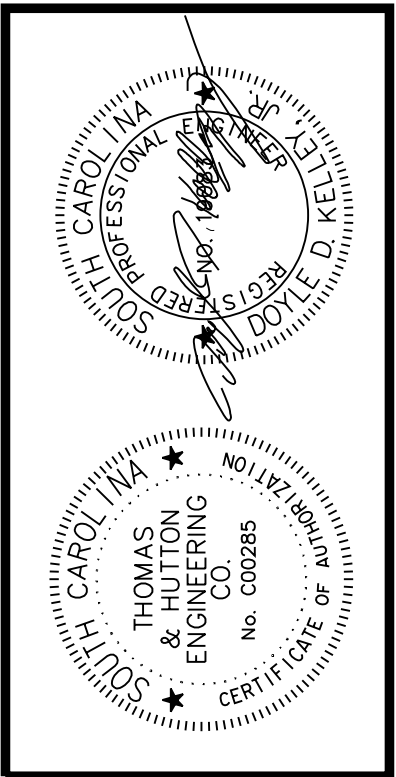
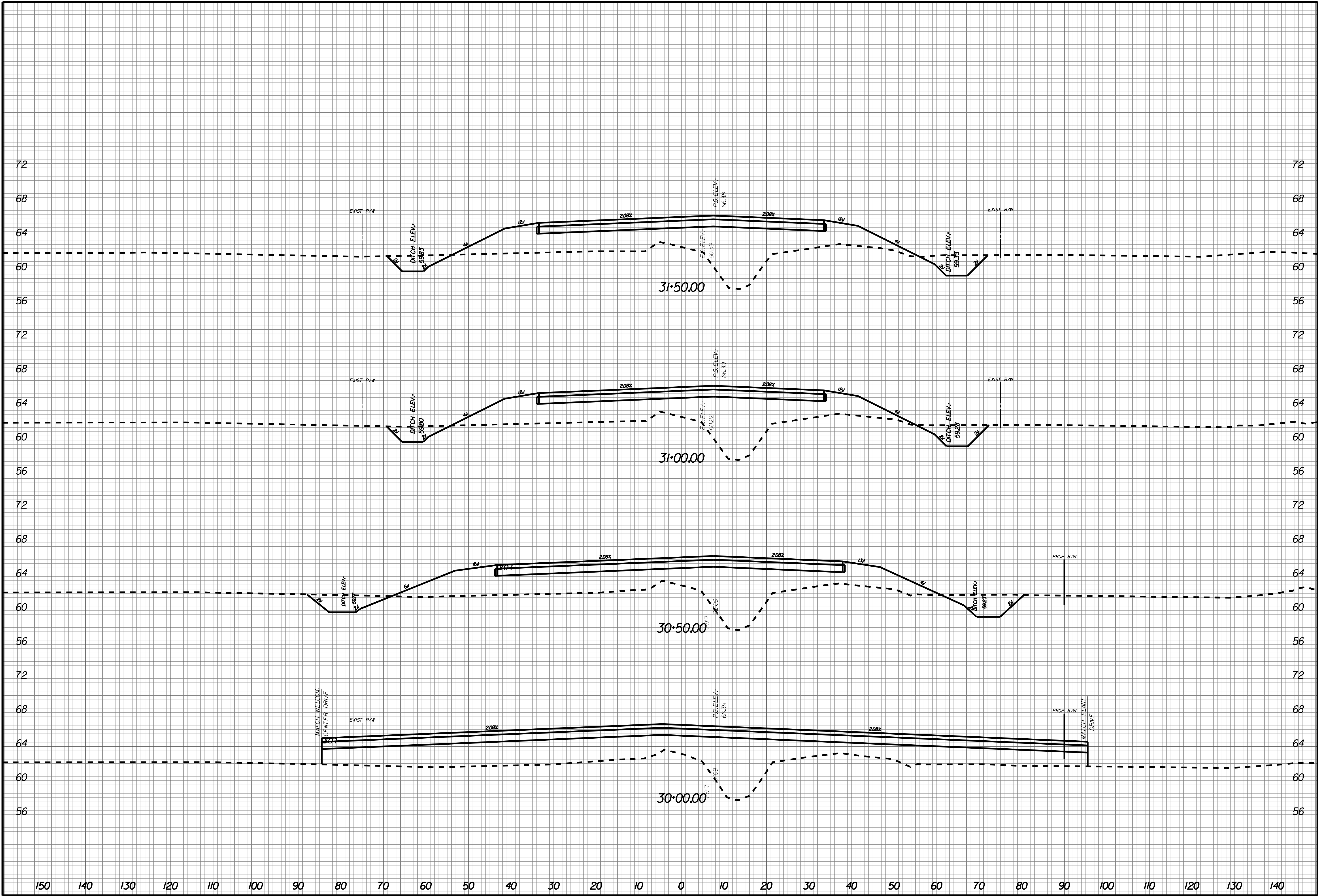
50 Park of Commerce Way
Savannah, GA 31405 • 912.234.5300

www.thomasandhutton.com

BERKELEY COUNTY BERKELEY COUNTY, SC
CENTERLINE ROAD
CROSS SECTIONS

JOB NO:	J-25644.1005
DATE:	
DRAWN:	
DESIGNED:	
REVIEWED:	
APPROVED:	
SCALE:	AS NOTED

X007



REVISIONS		BY	DATE

**THOMAS & HUTTON**
Engineering | Surveying | Planning | GIS | Consulting

50 Park of Commerce Way
Savannah, GA 31405 • 912.234.5300
www.thomasandhutton.com

BERKELEY COUNTY
BERKELEY COUNTY, SC

CENTERLINE ROAD

CROSS SECTIONS

JOB NO:	J-25644.0005
DATE:	
DRAWN:	
DESIGNED:	
REVIEWED:	
APPROVED:	
SCALE:	AS NOTED

X012