



REPLY TO  
ATTENTION OF

**DEPARTMENT OF THE ARMY**  
CHARLESTON DISTRICT, CORPS OF ENGINEERS  
69-A Hagood Avenue  
CHARLESTON, SOUTH CAROLINA 29403-5107

March 16, 2016

Regulatory Division

Mr. William Peagler  
Berkeley County  
1003 Highway 52  
Moncks Corner, South Carolina 29461

Dear Mr. Peagler:

This is in response to a request submitted on your behalf dated February 18, 2016, requesting that your permit numbered SAC 2015-0476-SIR issued on July 9, 2015, be modified to reflect the changes requested by you as shown on Sheet 1-35 of 35 entitled "PROJECT SOTER" and dated 2-6-16. These changes include modifying the plans and total area of impacts to waters of the United States accommodate changes in Phase 1 Mass Grading, and road alignments for Lower Westvaco Road, Centerline Road, and the Training Center & Access Road.

This is to inform you that your request for modification is granted. Please attach this letter with the modified plans to the original permit. All of the conditions to which the work is made subject remain in full force and effect. In that this work appears subject to the jurisdiction of the South Carolina Department of Health and Environmental Control, Office of Ocean and Coastal Resource Management, it is highly recommended that you contact that agency to ascertain their requirements in this matter.

Sincerely,

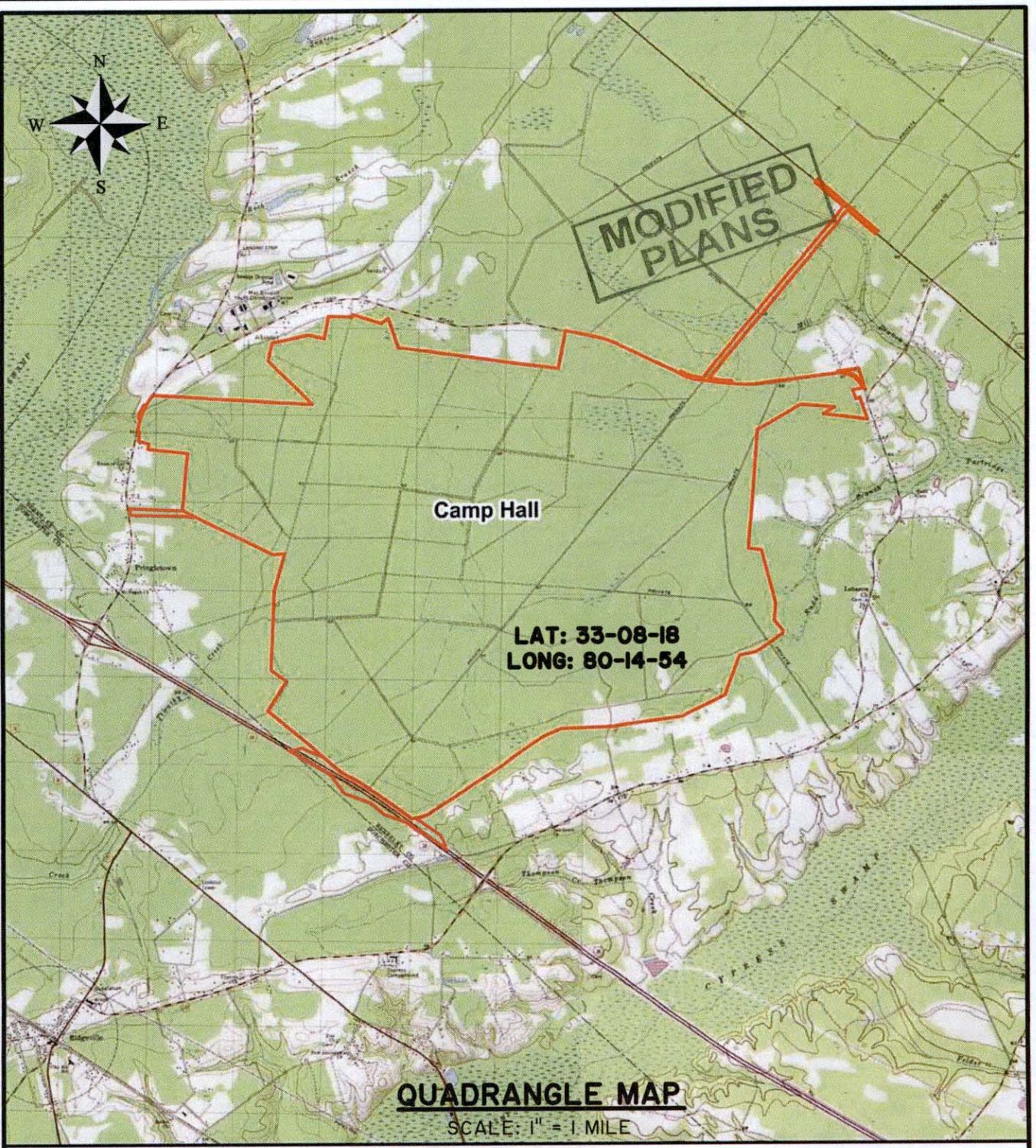
A handwritten signature in black ink, appearing to read "M. Luzzatto", written over a horizontal line.

for: Matthew W. Luzzatto, P.E., PMP  
Lieutenant Colonel, U.S. Army  
Commander and District Engineer

Travis G. Hughes  
Chief, Regulatory Division



Z:\25492\25492.0000\Engineering\Drawings\Exhibits\Wetlands\25492.0000 - Wetland Permit exhibits.dwg - Dec 1, 2015 - 3:05:43 PM



# PROJECT SOTER

PROPOSED ACTIVITY  
WETLAND FILL

CLIENT:  
BERKELEY COUNTY ECONOMIC DEVELOPMENT

LOCATION: BERKELEY COUNTY, SC

DATE: 02.03.16

JOB NUMBER: J-25492

DRAWN BY: MCL

REVIEWED BY: MBS

SHEET: 1 OF 35

SCALE: 1" = 1 MILE



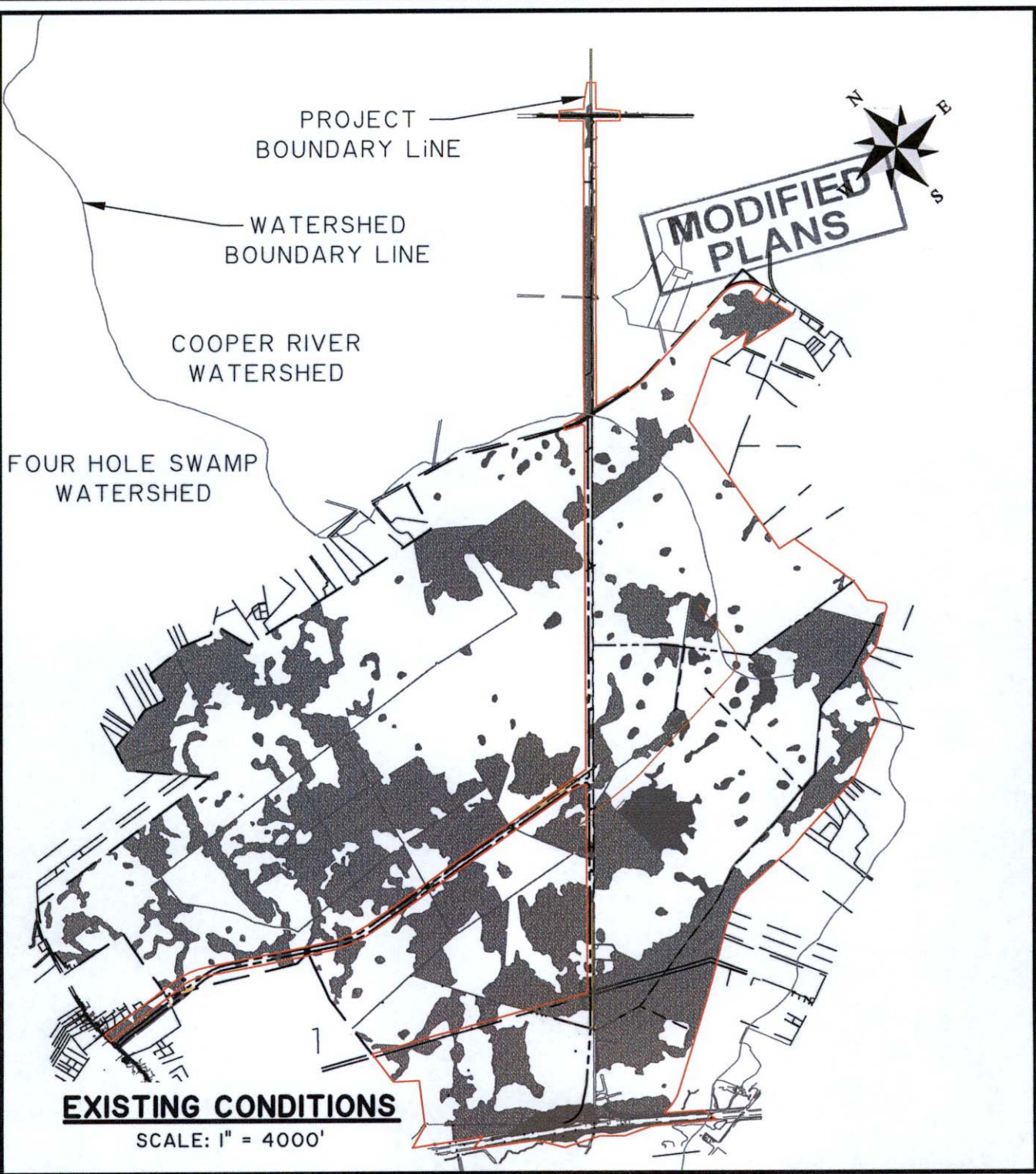
**THOMAS & HUTTON**  
Engineering | Surveying | Planning | GIS | Consulting

1501 Main Street • Suite 760  
Columbia, SC 29201 • 803.451.6789

[www.thomasandhutton.com](http://www.thomasandhutton.com)



Z:\25492\25492.0000\Engineering\Drawings\Exhibits\Wetlands\25492.0000 - Wetland Permit exhibits- EX. & OVERALL.dwg - Dec 7, 2015 - 3:40:05 PM



# PROJECT SOTER

PROPOSED ACTIVITY  
WETLAND FILL

CLIENT:  
BERKELEY COUNTY ECONOMIC DEVELOPMENT

LOCATION: BERKELEY COUNTY, SC

DATE: 02.03.16

JOB NUMBER: J-25492

DRAWN BY: MCL

REVIEWED BY: MBS

SHEET: 2 OF 35

SCALE: 1" = 4000'















**THOMAS & HUTTON**  
Engineering | Surveying | Planning | GIS | Consulting

1501 Main Street • Suite 760  
Columbia, SC 29201 • 803.451.6789

[www.thomasandhutton.com](http://www.thomasandhutton.com)

**LEGEND**

-  JURISDICTIONAL
-  RPW
-  NON-JURISDICTIONAL
-  IMPACT RPW
-  IMPACT JURISDICTIONAL
-  EXCAVATION RPW
-  INFRASTRUCTURE JURISDICTIONAL
-  LAND CLEARING JURISDICTIONAL
-  INFRASTRUCTURE LAND CLEARING JURISDICTIONAL
-  SHADED JURISDICTIONAL
-  IMPACT NON-JURISDICTIONAL
-  EXCAVATION NON-JURISDICTIONAL

**MODIFIED  
PLANS**

<u>WATERS OF THE US IMPACT SUMMARY</u>	<u>NON JURISDICTIONAL (ACRES)</u>	<u>JURISDICTIONAL (ACRES)</u>	<u>TOTAL (ACRES)</u>
EXCAVATION	2.65	0.00	2.65
LAND CLEARING	0.00	16.90	16.90
RPW FILL	0.00	1.05	1.05
RPW EXCAVATION	0.00	0.84	0.84
SHADING	0.00	2.92	2.92
SITE DEVELOPMENT FILL (IMPACT)	20.56	173.12	193.67
<b>TOTAL</b>	<b>23.21</b>	<b>194.81</b>	<b>218.02</b>
ACREAGE PERMITTED UNDER SAC-2015-0476-SIR	(23.14)	(192.88)	(216.02)
DIFFERENCES	$\Delta=+0.07$ Ac.	$\Delta=+1.93$	$\Delta=+2.00$
	Increase	Increase	Increase

**PROJECT SOTER**

PROPOSED ACTIVITY  
WETLAND FILL

CLIENT:  
BERKELEY COUNTY ECONOMIC DEVELOPMENT

LOCATION: BERKELEY COUNTY, SC  
DATE: 02.03.16      DRAWN BY: MCL      SHEET: 3 OF 35  
JOB NUMBER: J-25492      REVIEWED BY: MBS      SCALE: N/A

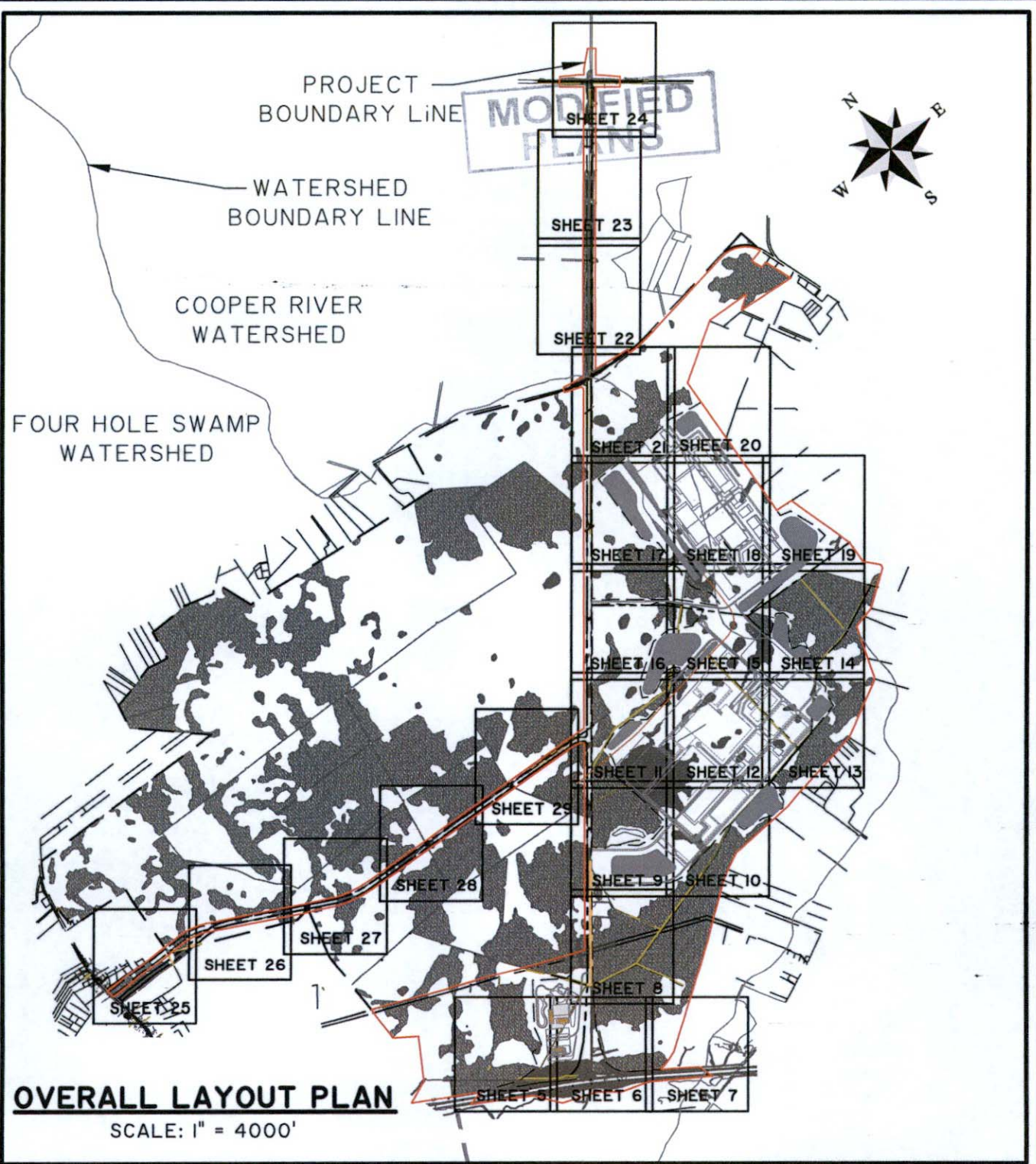
**THOMAS & HUTTON**  
Engineering | Surveying | Planning | GIS | Consulting

1501 Main Street • Suite 760  
Columbia, SC 29201 • 803.451.6789

[www.thomasandhutton.com](http://www.thomasandhutton.com)



Z:\25492\25492.0000\Engineering\Drawings\Wetlands\25492.0000 - Wetland Permit exhibits- EX & OVERALL.dwg - Dec 7, 2015 - 3:40:05 PM



### OVERALL LAYOUT PLAN

SCALE: 1" = 4000'

## PROJECT SOTER

PROPOSED ACTIVITY  
WETLAND FILL

CLIENT:  
BERKELEY COUNTY ECONOMIC DEVELOPMENT

LOCATION: BERKELEY COUNTY, SC

DATE: 02.03.16

JOB NUMBER: J-25492

DRAWN BY: MCL

REVIEWED BY: MBS

SHEET: 4 OF 35

SCALE: 1" = 4000'



**THOMAS & HUTTON**  
Engineering | Surveying | Planning | GIS | Consulting

1501 Main Street • Suite 760  
Columbia, SC 29201 • 803.451.6789

[www.thomasandhutton.com](http://www.thomasandhutton.com)





**MODIFIED PLANS**

U.S.A.C.E  
JURISDICTIONAL  
WETLAND  
14817745 SE  
1038840745  
BIDD

IMPACT #24A  
LAND CLEARING  
0.70 AC.

IMPACT #24B  
LAND CLEARING  
13.77 AC.

IMPACT #31B  
INFRASTRUCTURE I  
WETLAND FILL  
4.36 AC.

IMPACT #32  
INFRASTRUCTURE I  
LAND CLEARING  
2.43 AC.

IMPACT #31A  
INFRASTRUCTURE I  
WETLAND FILL  
13.28 AC.

LOD (LIMITS OF  
DISTURBANCE)  
LINE

INTERSTATE 26 (VARIABLE R/W)

MATCH LINE - SEE SHEET NO. 6

SHEET 5

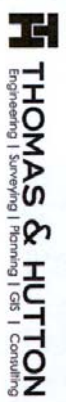
**PROJECT SOTER**

PROPOSED ACTIVITY  
WETLAND FILL

CLIENT:  
BERKELEY COUNTY ECONOMIC DEVELOPMENT

LOCATION: BERKELEY COUNTY, SC  
DATE: 02.03.16  
JOB NUMBER: J-25492

DRAWN BY: MCL  
REVIEWED BY: MBS  
SHEET: 5 OF 35  
SCALE: 1" = 400'



1501 Main Street • Suite 740  
Columbia, SC 29201 • 803.451.6789

www.thomasonhutton.com



1911

1912

1913

1914

1915

1916

1917

1918

1919

1920

1921

1922

1923

1924

1925

1926

1927

1928

1929

1930

1931

1932

1933

1934

1935

1936

1937

1938

1939

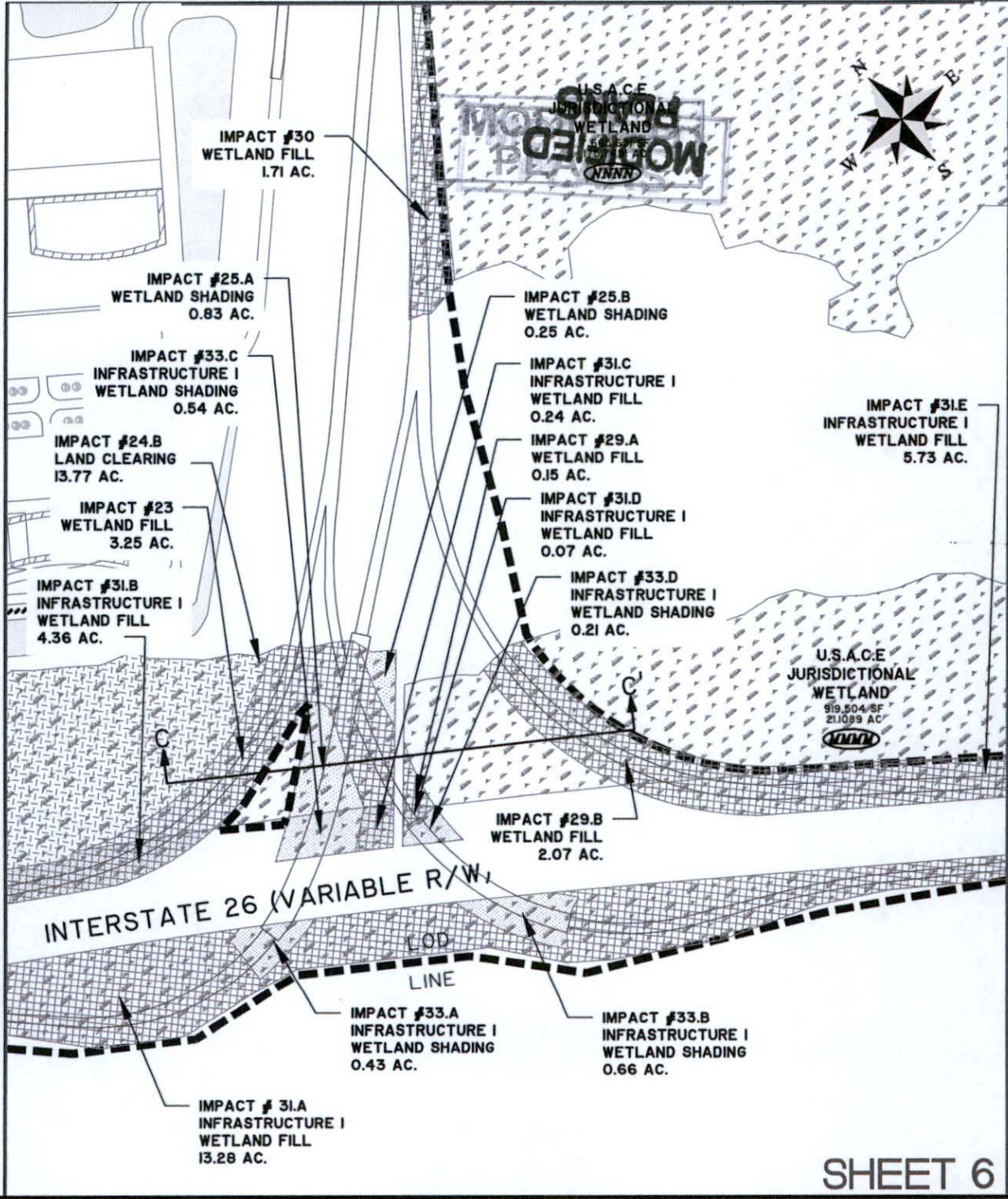


Z:\25492\25492.000\Engineering\Drawings\Exhibits\Wetlands\Wetland Permit exhibits - for impact to row.dwg - Dec 15, 2015 - 5:09:23 PM

MATCH LINE - SEE SHEET NO. 8

MATCH LINE - SEE SHEET NO. 5

MATCH LINE - SEE SHEET NO. 7



SHEET 6

### PROJECT SOTER

PROPOSED ACTIVITY  
WETLAND FILL

CLIENT:  
BERKELEY COUNTY ECONOMIC DEVELOPMENT

LOCATION: BERKELEY COUNTY, SC

DATE: 02.03.16	DRAWN BY: MCL	SHEET: 6 OF 35
JOB NUMBER: J-25492	REVIEWED BY: MBS	SCALE: 1" = 400'

**THOMAS & HUTTON**  
Engineering | Surveying | Planning | GIS | Consulting

1501 Main Street • Suite 760  
Columbia, SC 29201 • 803.451.6789

[www.thomasandhutton.com](http://www.thomasandhutton.com)



Z:\25492\25492.0000\Engineering\Drawings\Exhibits\Wetlands\work\Wetland Permit exhibits - for impact to row.dwg - Dec 15, 2015 - 5:05:23 PM

MATCH LINE - SEE SHEET NO. 6

# MODIFIED PLANS

ISOLATED  
NON-JURISDICTIONAL  
WETLAND  
7,034 SF  
0.1615 AC



FOUR HOLE SWAMP  
WATERSHED

COOPER RIVER  
WATERSHED

U.S.A.C.E.  
JURISDICTIONAL  
WETLAND  
919,504 SF  
21,089 AC



IMPACT #31E  
INFRASTRUCTURE I  
WETLAND FILL  
5.73 AC.

LOD

LINE

INTERSTATE 26 (VARIABLE R/W)

IMPACT # 31.A  
INFRASTRUCTURE I  
WETLAND FILL  
13.28 AC.

WATERSHED  
BOUNDARY



SHEET 7

## PROJECT SOTER

PROPOSED ACTIVITY  
WETLAND FILL

CLIENT:  
BERKELEY COUNTY ECONOMIC DEVELOPMENT

LOCATION: BERKELEY COUNTY, SC

DATE: 02.03.16

JOB NUMBER: J-25492

DRAWN BY: MCL

REVIEWED BY: MBS

SHEET: 7 OF 35

SCALE: 1" = 400'



**THOMAS & HUTTON**  
Engineering | Surveying | Planning | GIS | Consulting

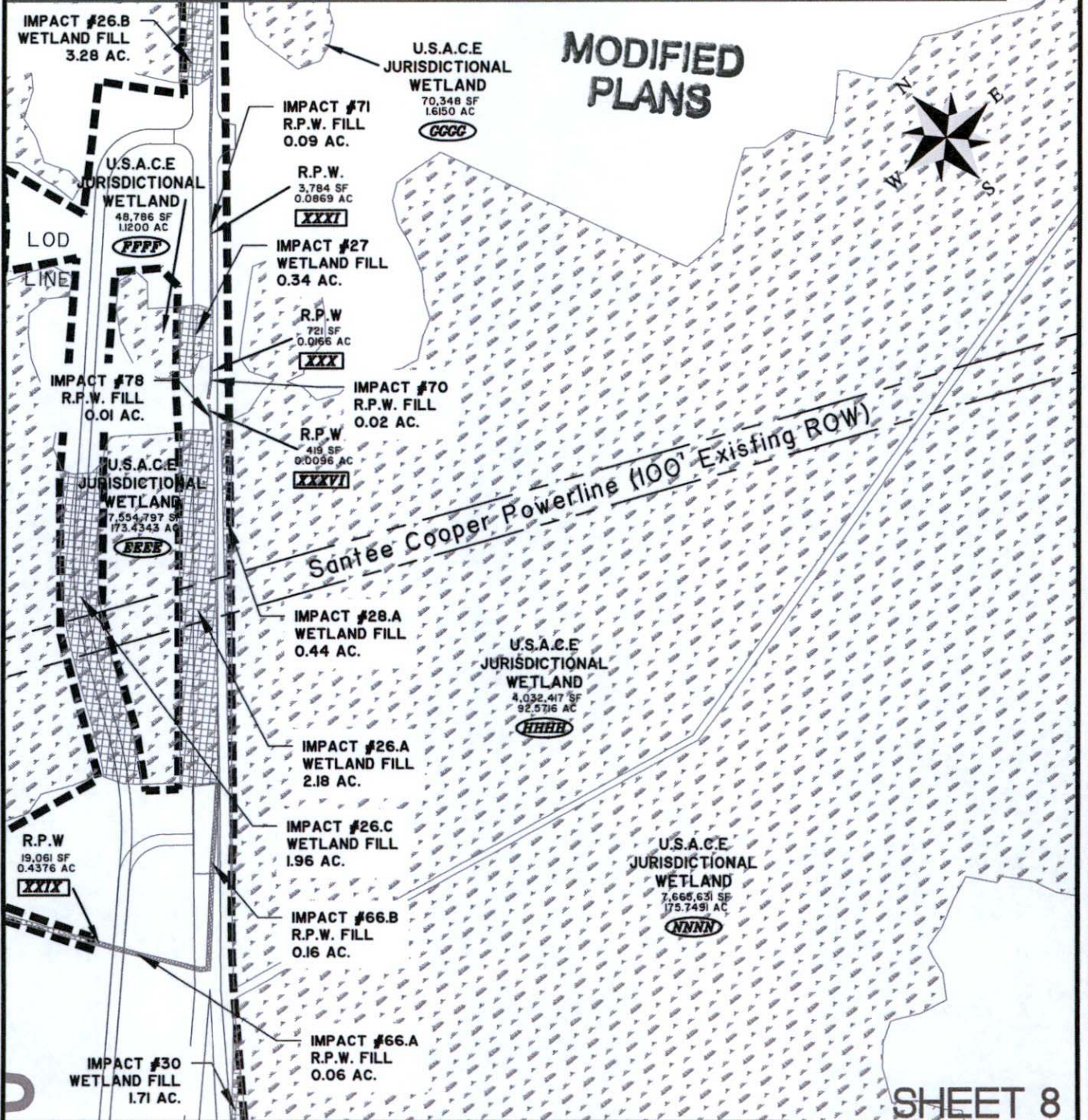
1501 Main Street • Suite 760  
Columbia, SC 29201 • 803.451.6789

[www.thomasandhutton.com](http://www.thomasandhutton.com)



Z:\254921\25492.0000\Engineering\Drawings\Exhibits\Wetlands\Wetland Permit exhibits - for impact to row.dwg - Dec 15, 2015 - 5:09:23 PM

MATCH LINE - SEE SHEET NO. 9



SHEET 8

MATCH LINE - SEE SHEET NO. 6

### PROJECT SOTER

PROPOSED ACTIVITY  
WETLAND FILL

CLIENT:  
BERKELEY COUNTY ECONOMIC DEVELOPMENT

LOCATION: BERKELEY COUNTY, SC

DATE: 02.03.16

JOB NUMBER: J-25492

DRAWN BY: MCL

REVIEWED BY: MBS

SHEET: 8 OF 35

SCALE: 1" = 400'

**THOMAS & HUTTON**  
Engineering | Surveying | Planning | GIS | Consulting

1501 Main Street • Suite 760  
Columbia, SC 29201 • 803.451.6789

www.thomasandhutton.com

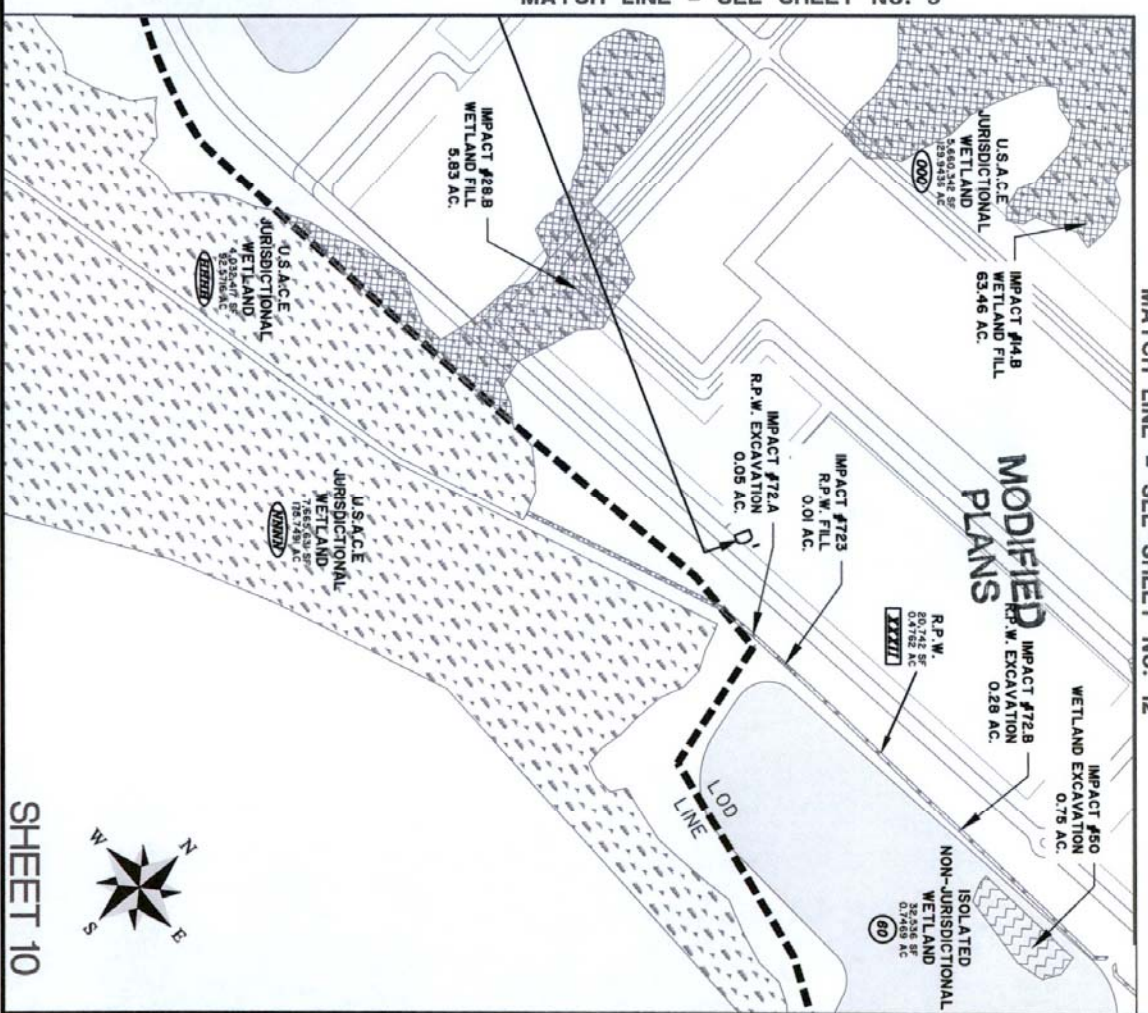






MATCH LINE - SEE SHEET NO. 9

MATCH LINE - SEE SHEET NO. 12



SHEET 10



**PROJECT SOTER**  
 PROPOSED ACTIVITY  
**WETLAND FILL**

CLIENT:  
**BERKELEY COUNTY ECONOMIC DEVELOPMENT**  
 LOCATION: BERKELEY COUNTY, SC  
 DATE: 02/03/16  
 JOB NUMBER: J-25492

DRAWN BY: MCL  
 REVIEWED BY: MBS  
 SHEET: 10 OF 35  
 SCALE: 1" = 400'

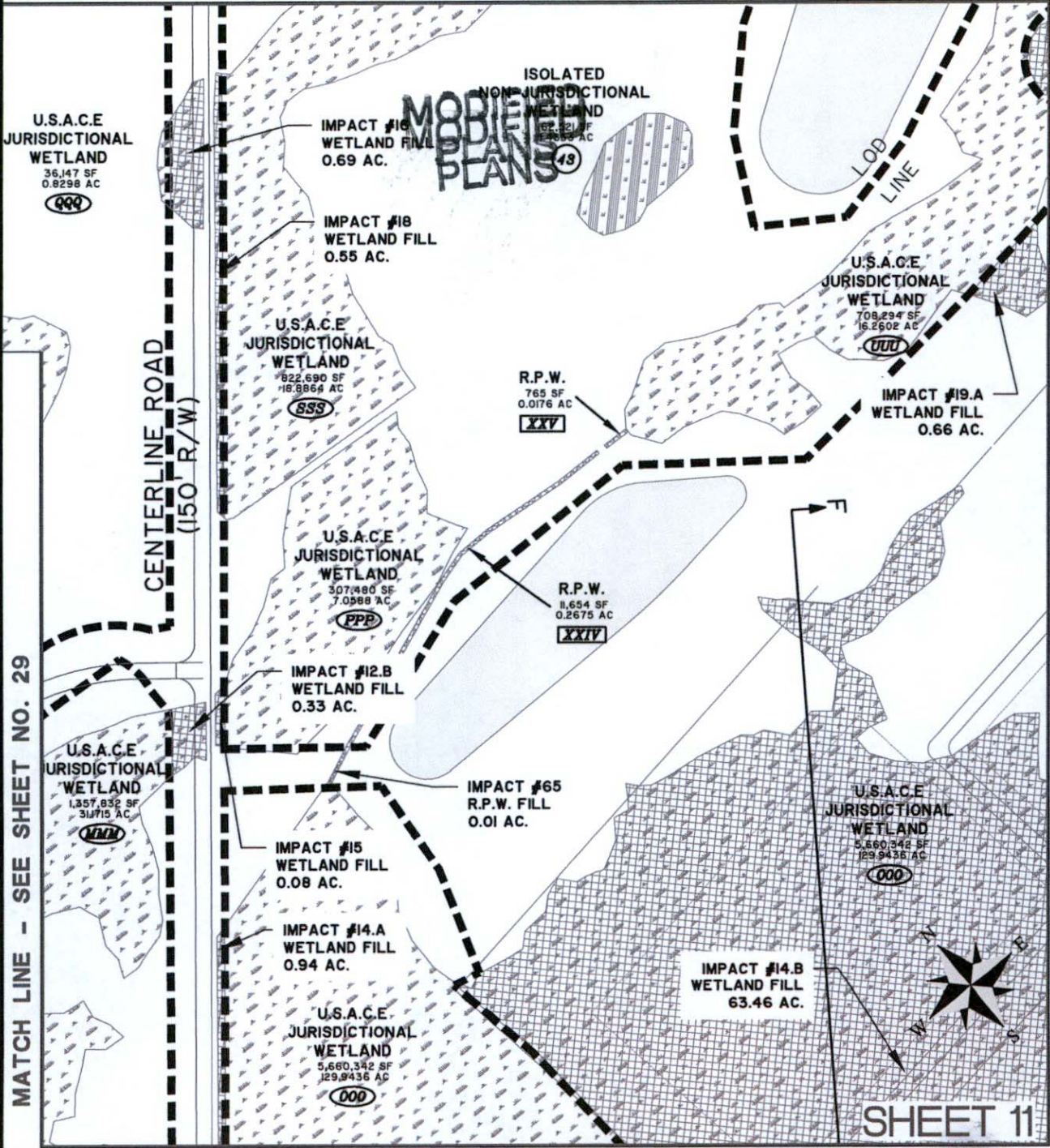


1501 Main Street • Suite 760  
 Columbia, SC 29201 • 803.451.6789  
 www.thomasandhutton.com



Z:\25492\25492.0000\Engineering\Drawings\Exhibits\Wetlands\Wetland Permit exhibits - for impact to row.dwg - Dec 15, 2015 - 5:09:23 PM

MATCH LINE - SEE SHEET NO. 16



MATCH LINE - SEE SHEET NO. 29

MATCH LINE - SEE SHEET NO. 12

MATCH LINE - SEE SHEET NO. 9

# PROJECT SOTER

PROPOSED ACTIVITY  
WETLAND FILL

CLIENT:  
BERKELEY COUNTY ECONOMIC DEVELOPMENT

LOCATION: BERKELEY COUNTY, SC

DATE: 02.03.16

JOB NUMBER: J-25492

DRAWN BY: MCL

REVIEWED BY: MBS

SHEET: 11 OF 35

SCALE: 1" = 400'



**THOMAS & HUTTON**  
Engineering | Surveying | Planning | GIS | Consulting

1501 Main Street • Suite 760  
Columbia, SC 29201 • 803.451.6789

www.thomasandhutton.com

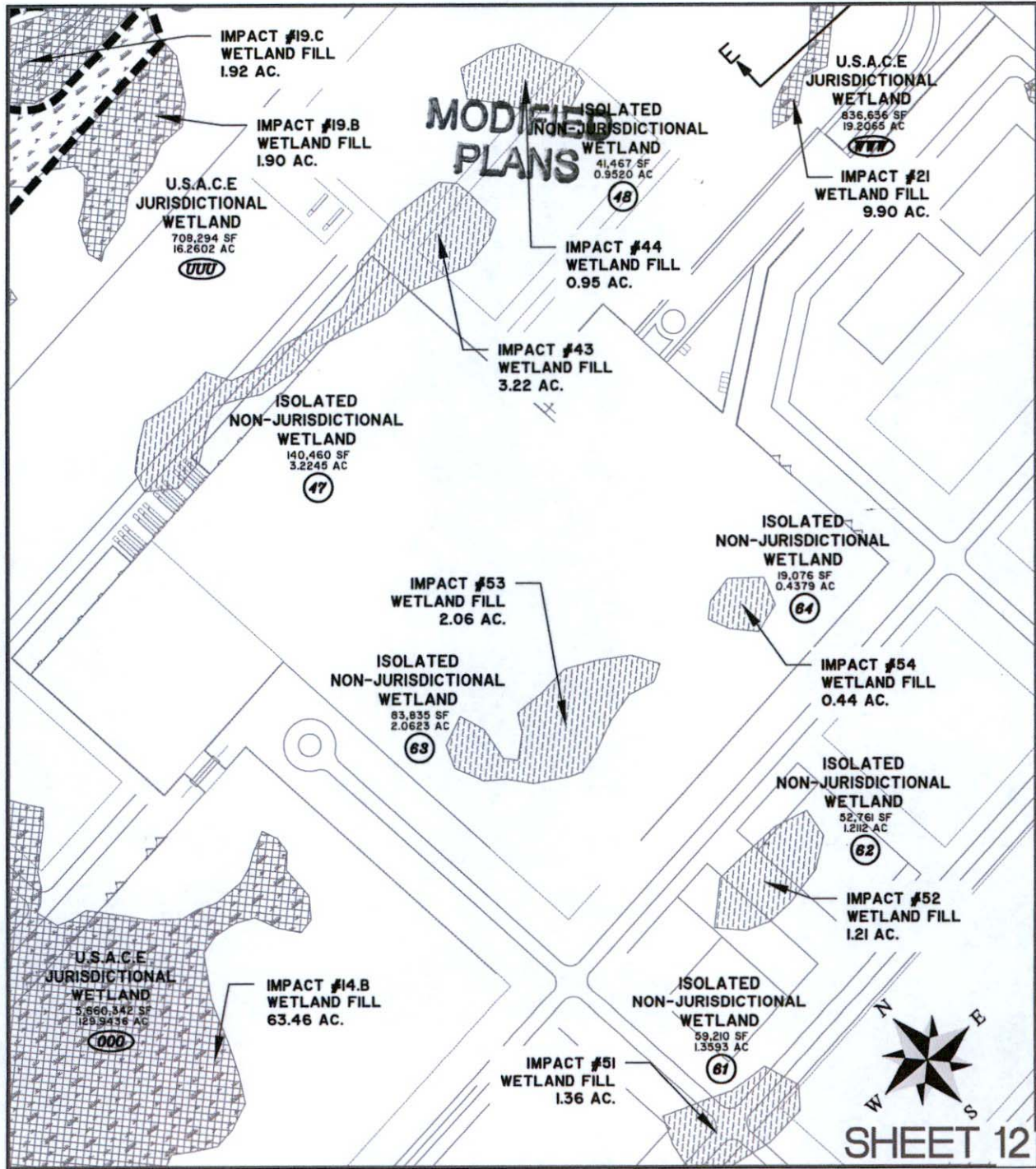


Z:\25492\25492.0000\Engineering\Drawings\Exhibits\Wetlands\wet\Wetland Permit exhibits - for impact to rev.dwg - Dec 15, 2015 - 5:09:23 PM

MATCH LINE - SEE SHEET NO. 15

MATCH LINE - SEE SHEET NO. 11

MATCH LINE - SEE SHEET NO. 13



MATCH LINE - SEE SHEET NO. 10

# PROJECT SOTER

PROPOSED ACTIVITY  
WETLAND FILL

CLIENT:  
BERKELEY COUNTY ECONOMIC DEVELOPMENT

LOCATION: BERKELEY COUNTY, SC

DATE: 02.03.16

JOB NUMBER: J-25492

DRAWN BY: MCL

REVIEWED BY: MBS

SHEET: 12 OF 35

SCALE: 1" = 400'



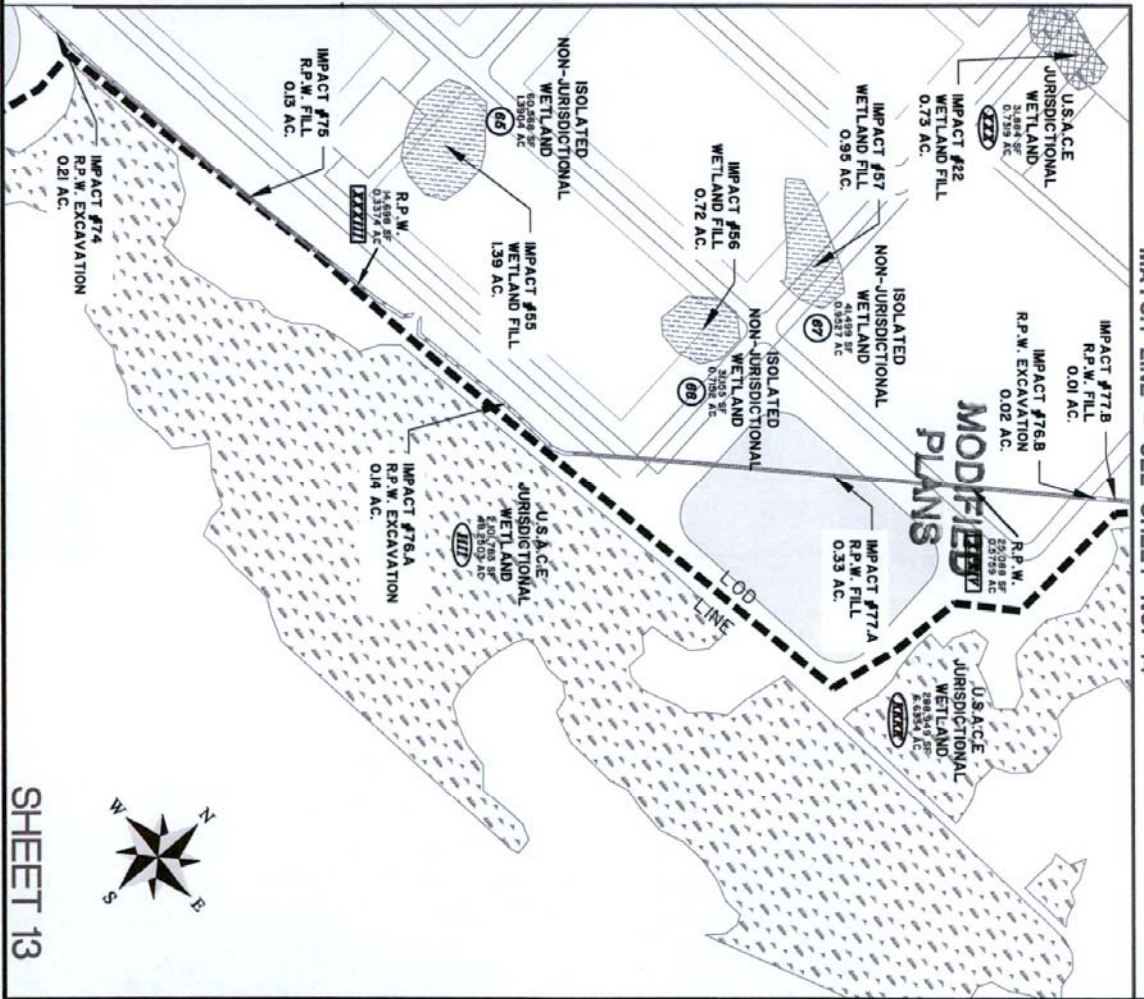
**THOMAS & HUTTON**  
Engineering | Surveying | Planning | GIS | Consulting

1501 Main Street • Suite 760  
Columbia, SC 29201 • 803.451.6789

www.thomasandhutton.com



MATCH LINE - SEE SHEET NO. 12



MATCH LINE - SEE SHEET NO. 14

SHEET 13

**PROJECT SOTER**  
 PROPOSED ACTIVITY  
 WETLAND FILL

CLIENT:  
 BERKELEY COUNTY ECONOMIC DEVELOPMENT  
 LOCATION: BERKELEY COUNTY, SC  
 DATE: 02/03/16  
 JOB NUMBER: J25492

DRAWN BY: MCL  
 REVIEWED BY: MBS  
 SHEET: 13 OF 35  
 SCALE: 1" = 400'



**THOMAS & HUTTON**  
 Engineering | Surveying | Planning | GIS | Consulting

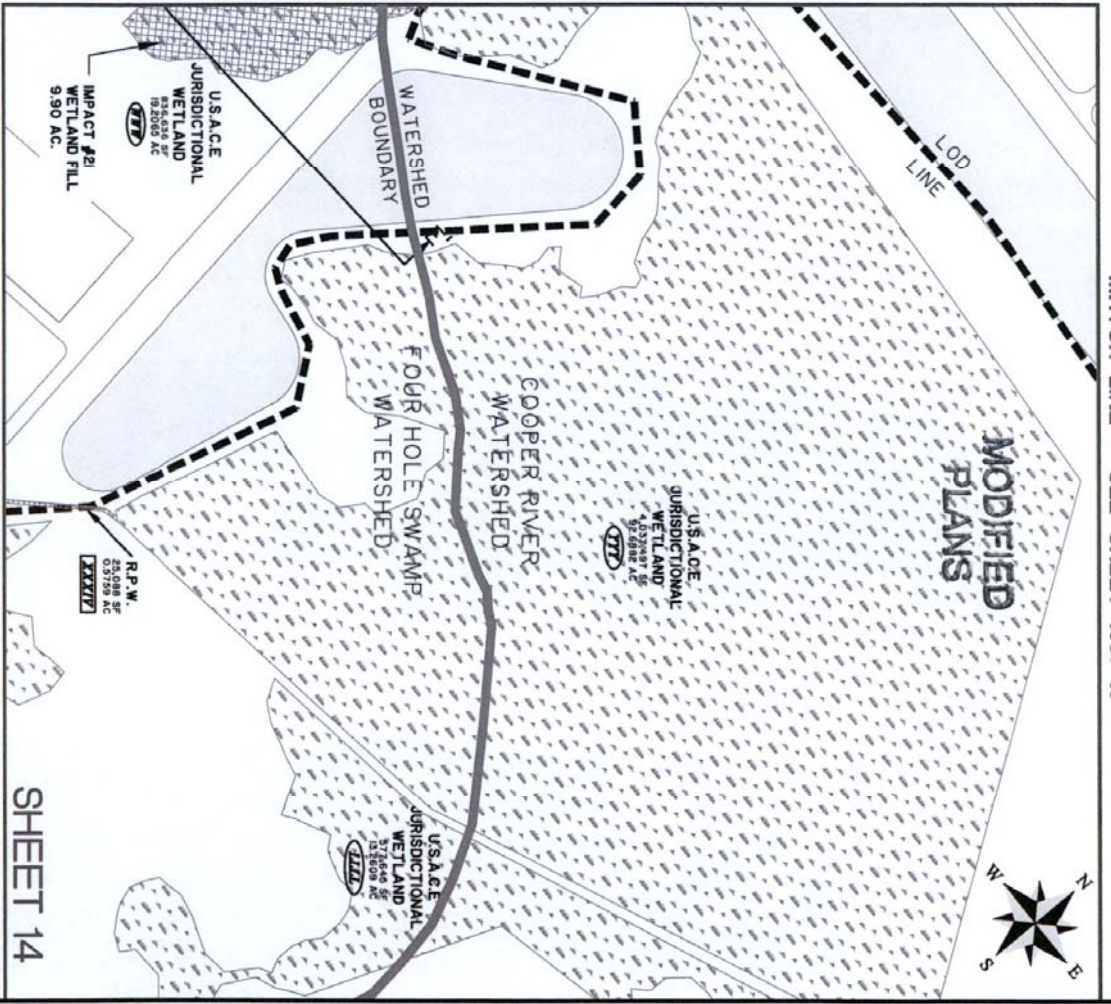
1501 Main Street • Suite 760  
 Columbia, SC 29201 • 803.451.6789

www.thomasonhutton.com



MATCH LINE - SEE SHEET NO. 15

MATCH LINE - SEE SHEET NO. 19



MATCH LINE - SEE SHEET NO. 13

SHEET 14

### PROJECT SOTER

PROPOSED ACTIVITY  
WETLAND FILL

CLIENT:  
 BERKELEY COUNTY ECONOMIC DEVELOPMENT  
 LOCATION: BERKELEY COUNTY, SC  
 DATE: 02.03.16  
 JOB NUMBER: J-25492

DRAWN BY: MCL  
 REVIEWED BY: MBS

SHEET: 14 OF 35  
 SCALE: 1" = 400'



1501 Main Street • Suite 750  
 Columbia, SC 29201 • 803.451.6789  
 www.thomasandhutton.com

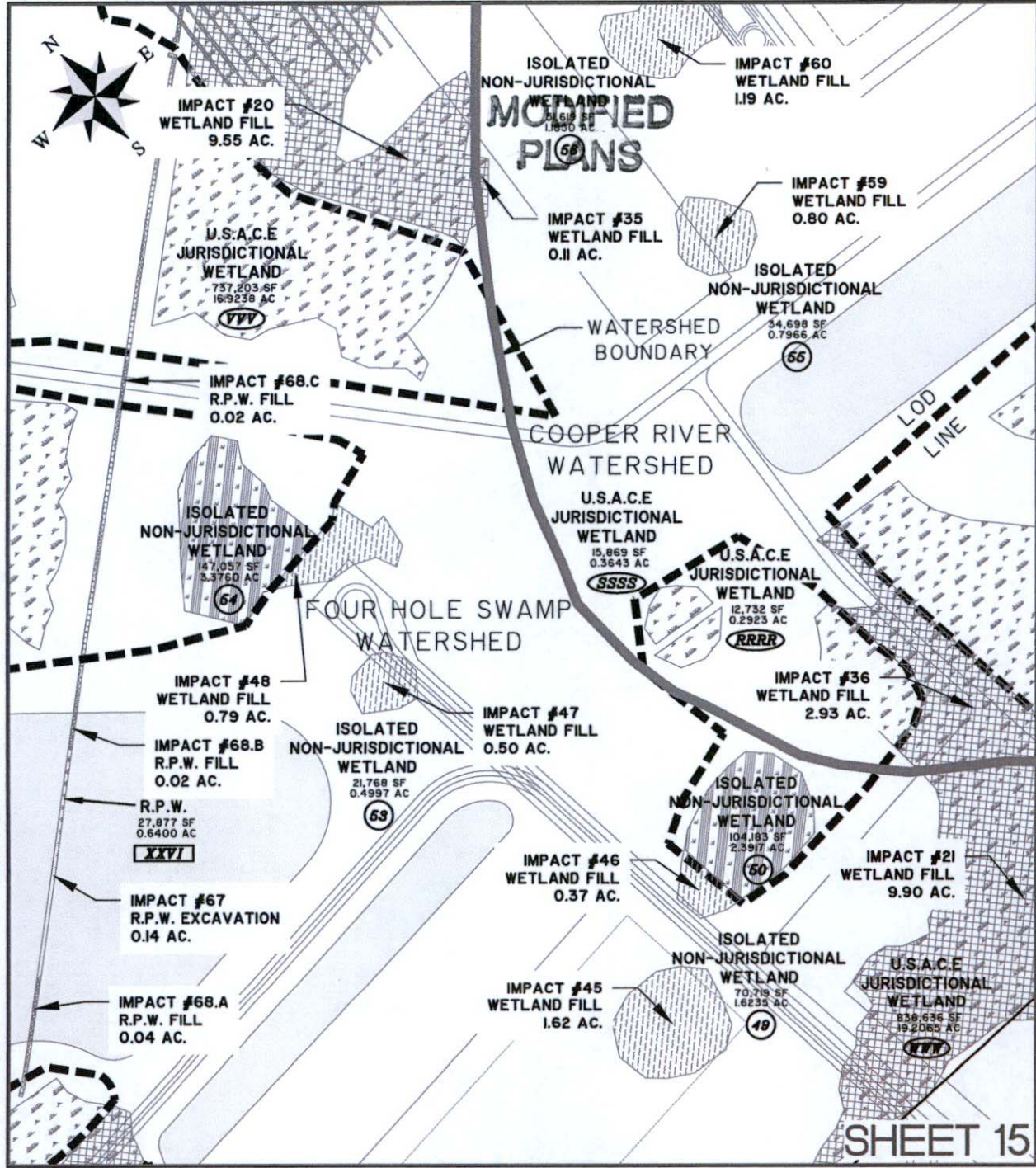


Z:\254921\25492.0000\Engineering\Drawings\Exhibits\Wetlands\Wetland Permit exhibits - for impact to row.dwg - Dec 15, 2015 - 5:09:23 PM

MATCH LINE - SEE SHEET NO. 18

MATCH LINE - SEE SHEET NO. 14

MATCH LINE - SEE SHEET NO. 16



MATCH LINE - SEE SHEET NO. 12

# PROJECT SOTER

PROPOSED ACTIVITY  
WETLAND FILL

CLIENT:  
BERKELEY COUNTY ECONOMIC DEVELOPMENT

LOCATION: BERKELEY COUNTY, SC

DATE: 02.03.16

JOB NUMBER: J-25492

DRAWN BY: MCL

REVIEWED BY: MBS

SHEET: 15 OF 35

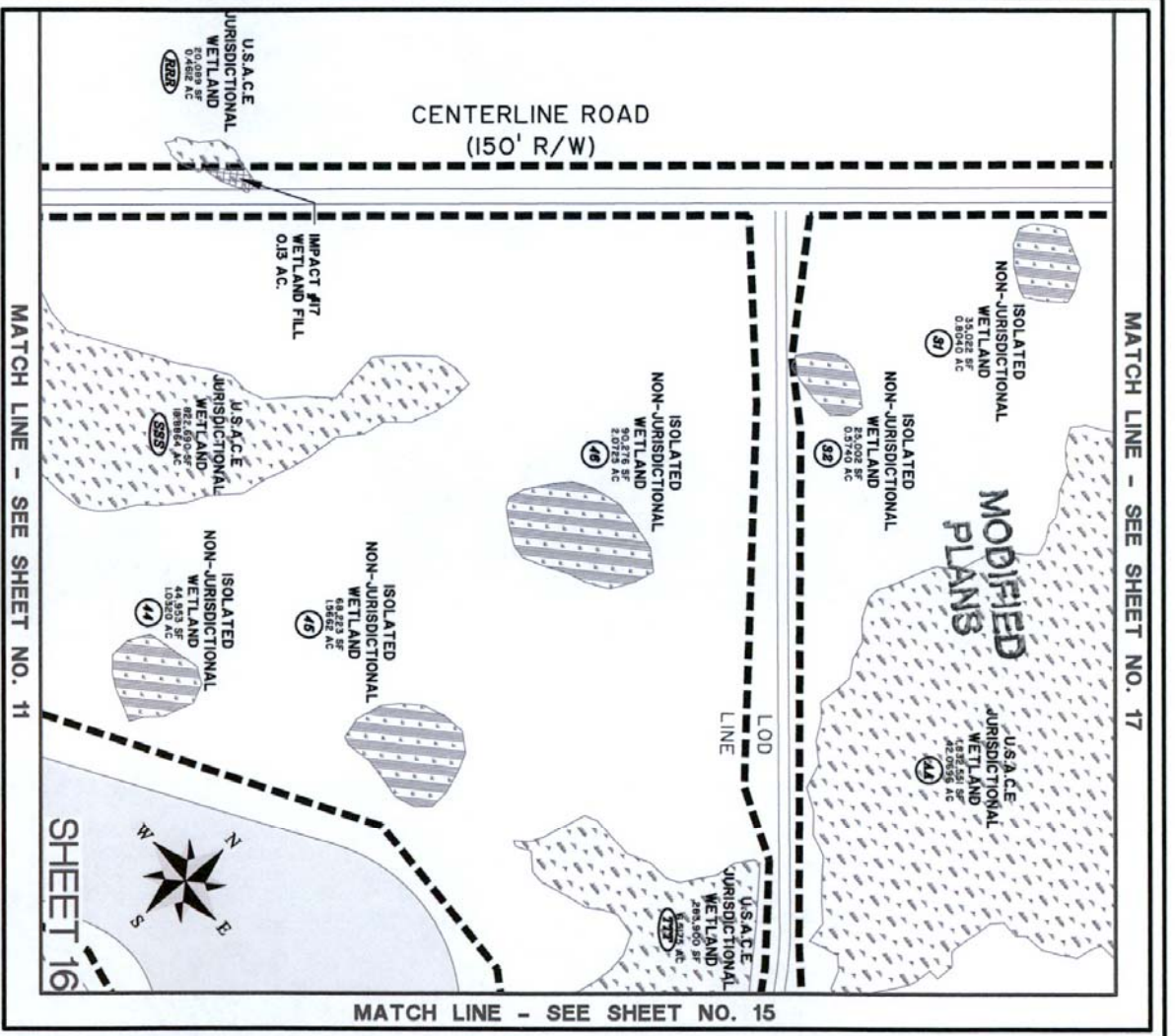
SCALE: 1" = 400'

**THOMAS & HUTTON**  
Engineering | Surveying | Planning | GIS | Consulting

1501 Main Street • Suite 760  
Columbia, SC 29201 • 803.451.6789

www.thomasandhutton.com





**PROJECT SOTER**  
 PROPOSED ACTIVITY  
 WETLAND FILL

CLIENT:  
 BERKELEY COUNTY ECONOMIC DEVELOPMENT

LOCATION: BERKELEY COUNTY, SC  
 DATE: 02.03.16  
 JOB NUMBER: J-25492

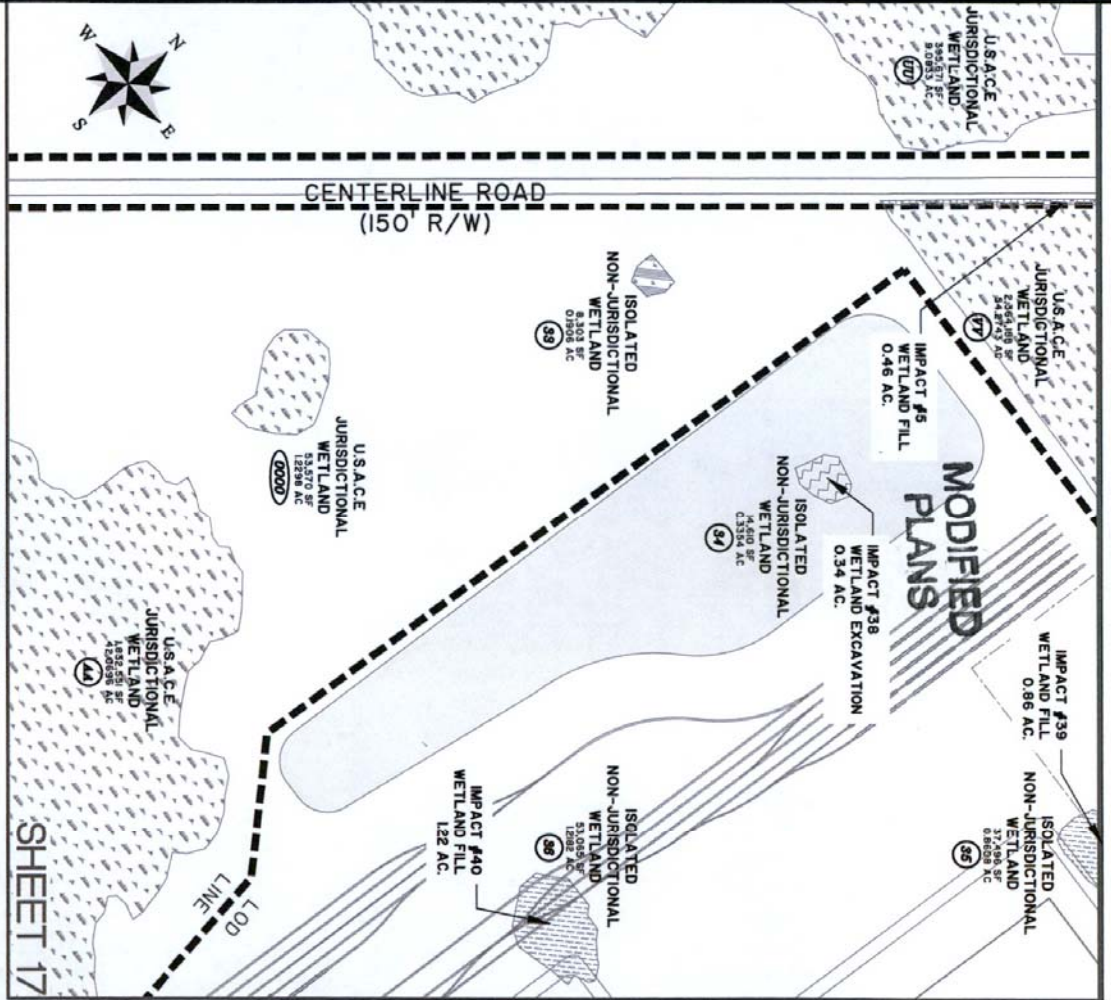
DRAWN BY: MCL  
 REVIEWED BY: MBS

SHEET: 16 OF 35  
 SCALE: 1" = 400'

**THOMAS & HUTTON**  
 Engineering | Surveying | Planning | GIS | Consulting

1501 Main Street • Suite 760  
 Columbia, SC 29201 • 803.451.6789  
 www.thomasandhutton.com





**PROJECT SOTER**  
 PROPOSED ACTIVITY  
 WETLAND FILL

CLIENT:  
 BERKELEY COUNTY ECONOMIC DEVELOPMENT  
 LOCATION: BERKELEY COUNTY, SC  
 DATE: 02/03/16  
 JOB NUMBER: J25492

DRAWN BY: MCL  
 REVIEWED BY: MBS  
 SHEET: 17 OF 35  
 SCALE: 1" = 400'

**THOMAS & HUTTON**  
 Engineering | Surveying | Planning | GIS | Consulting

1501 Main Street • Suite 760  
 Columbia, SC 29201 • 803.451.6789  
 www.thomasonhutton.com





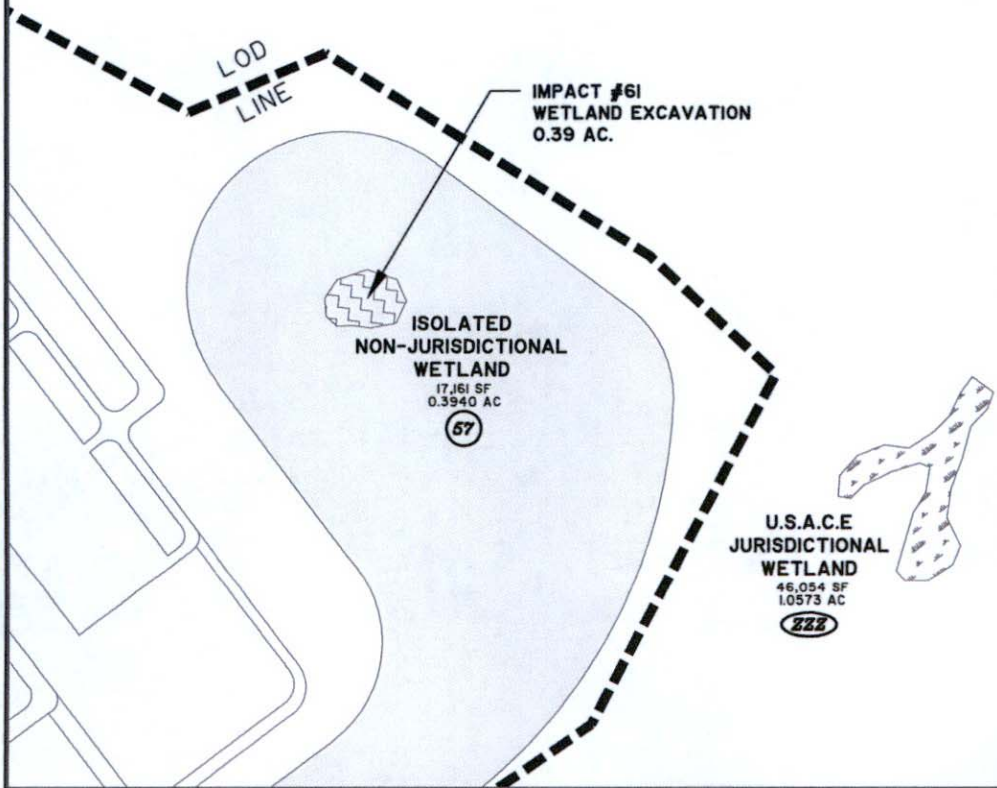


Z:\25492\25492.0000\Engineering\Drawings\Exhibits\Wetlands\Wetlands\Wetland Permit exhibits - for impact to rev.dwg - Dec 15, 2015 - 5:09:23 PM



# MODIFIED PLANS

MATCH LINE - SEE SHEET NO. 18



SHEET 19

MATCH LINE - SEE SHEET NO. 14

## PROJECT SOTER

PROPOSED ACTIVITY  
WETLAND FILL

CLIENT:  
BERKELEY COUNTY ECONOMIC DEVELOPMENT

LOCATION: BERKELEY COUNTY, SC

DATE: 02.03.16

JOB NUMBER: J-25492

DRAWN BY: MCL

REVIEWED BY: MBS

SHEET: 19 OF 35

SCALE: 1" = 400'



**THOMAS & HUTTON**  
Engineering | Surveying | Planning | GIS | Consulting

1501 Main Street • Suite 760  
Columbia, SC 29201 • 803.451.6789

[www.thomasandhutton.com](http://www.thomasandhutton.com)

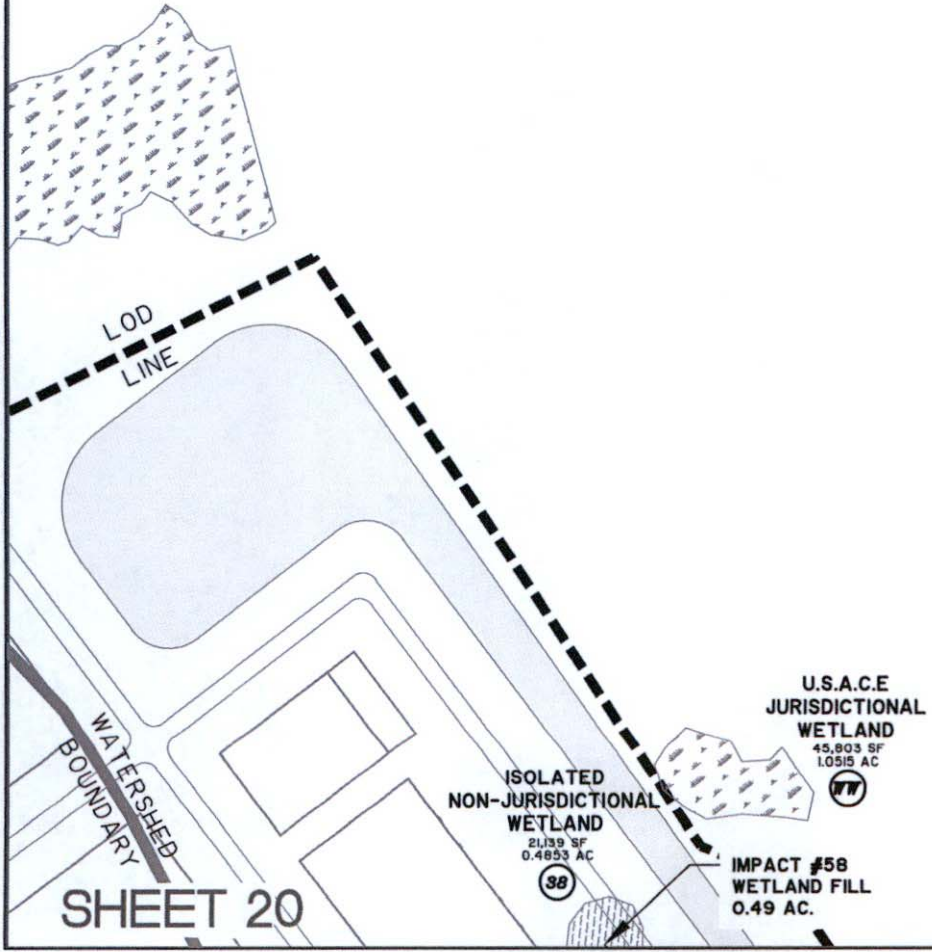


Z:\25492\25492.000\Engineering\Drawings\Exhibits\Wetlands\work\Wetland Permit exhibits - for impact to rev.dwg - Dec 15, 2015 - 5:09:23 PM



# MODIFIED PLANS

MATCH LINE - SEE SHEET NO. 21



SHEET 20

SHEET 20

MATCH LINE - SEE SHEET NO. 18

## PROJECT SOTER

PROPOSED ACTIVITY  
WETLAND FILL

CLIENT:  
BERKELEY COUNTY ECONOMIC DEVELOPMENT

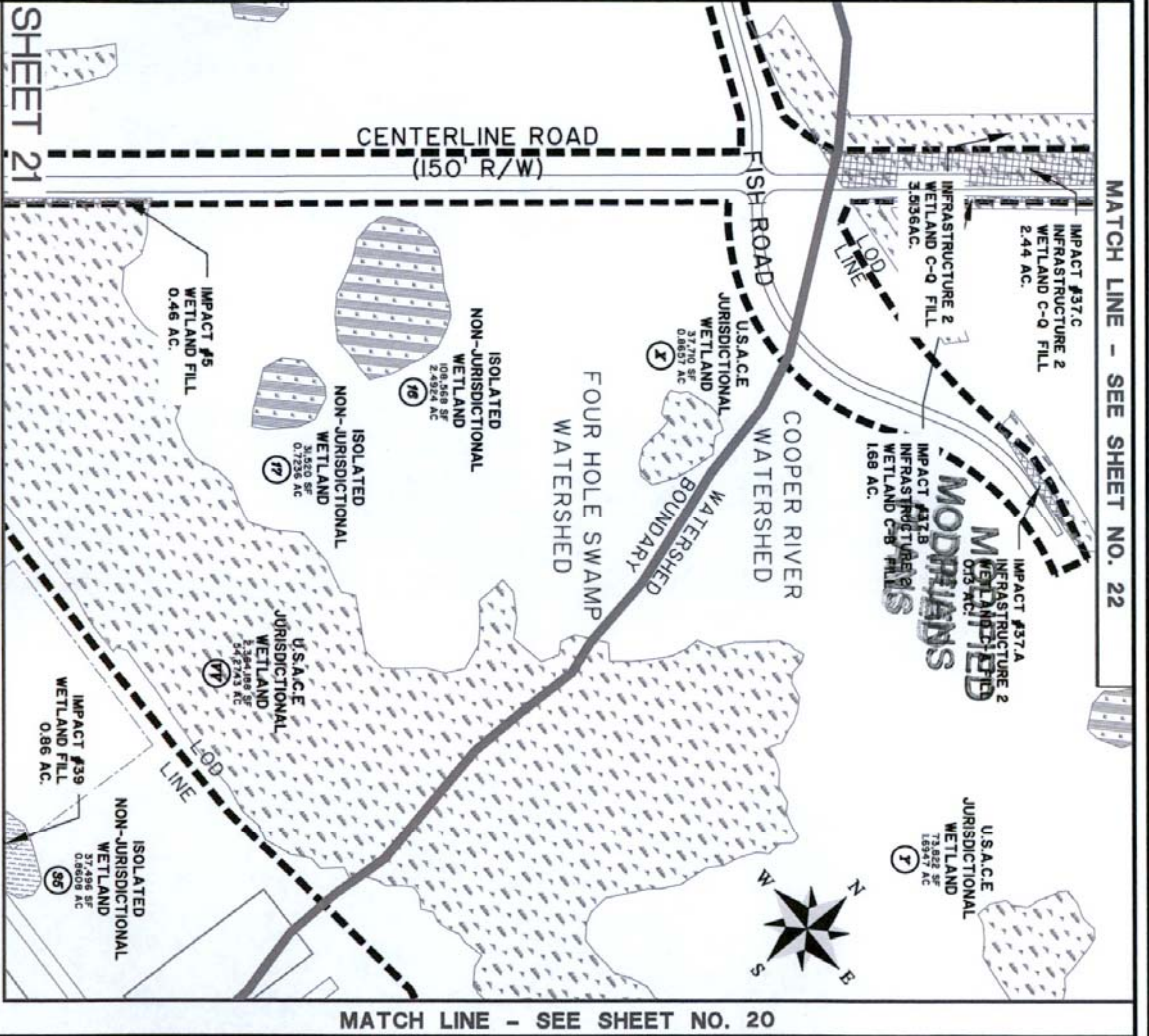
LOCATION: BERKELEY COUNTY, SC	DRAWN BY: MCL	SHEET: 20 OF 35
DATE: 02.03.16	REVIEWED BY: MBS	SCALE: 1" = 400'
JOB NUMBER: J-25492		

**THOMAS & HUTTON**  
Engineering | Surveying | Planning | GIS | Consulting

1501 Main Street • Suite 760  
Columbia, SC 29201 • 803.451.6789

[www.thomasandhutton.com](http://www.thomasandhutton.com)





**PROJECT SOTER**  
 PROPOSED ACTIVITY  
**WETLAND FILL**

CLIENT:  
**BERKELEY COUNTY ECONOMIC DEVELOPMENT**  
 LOCATION: BERKELEY COUNTY, SC  
 DATE: 02.03.16  
 JOB NUMBER: J-25492

DRAWN BY: MCL  
 REVIEWED BY: MBS  
 SHEET: 21 OF 35  
 SCALE: 1" = 400'

**THOMAS & HUTTON**  
 Engineering | Surveying | Planning | GIS | Consulting

1501 Main Street • Suite 750  
 Columbia, SC 29201 • 803.451.6789  
 www.thomasandhutton.com

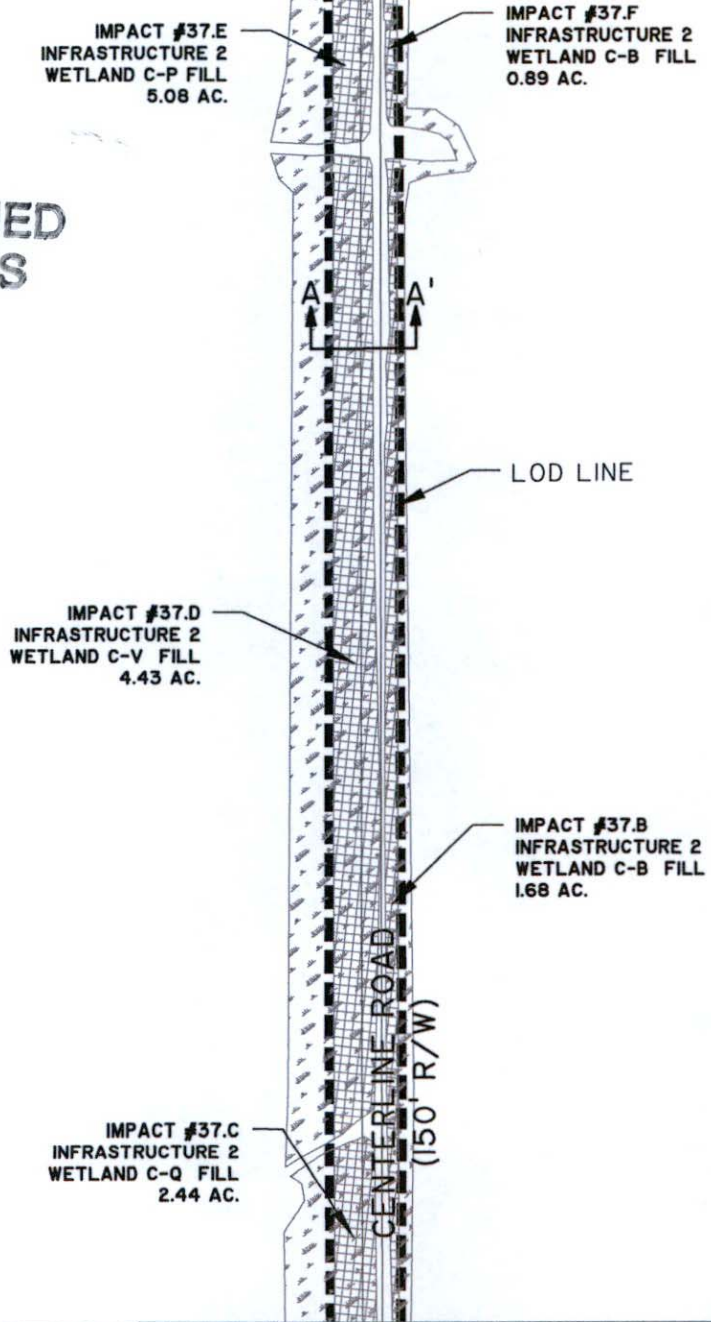


Z:\25492\25492.0000\Engineering\Drawings\Exhibits\Wetlands\work\Wetland Permit exhibits - for impact to rev.dwg - Dec 15, 2015 - 5:09:23 PM

MATCH LINE - SEE SHEET NO. 23



# MODIFIED PLANS



## SHEET 22

MATCH LINE - SEE SHEET NO. 21

### PROJECT SOTER

PROPOSED ACTIVITY  
WETLAND FILL

CLIENT:  
BERKELEY COUNTY ECONOMIC DEVELOPMENT

LOCATION: BERKELEY COUNTY, SC

DATE: 02.03.16	DRAWN BY: MCL	SHEET: 22 OF 35
JOB NUMBER: J-25492	REVIEWED BY: MBS	SCALE: 1" = 400'

**THOMAS & HUTTON**  
Engineering | Surveying | Planning | GIS | Consulting

1501 Main Street • Suite 760  
Columbia, SC 29201 • 803.451.6789

[www.thomasandhutton.com](http://www.thomasandhutton.com)



Z:\25492\25492.000\Engineering\Drawings\Exhibits\Wetlands\Wetlands\work\Wetland Permit exhibits - for impact to rev.dwg - Dec 15, 2015 - 5:09:23 PM

MATCH LINE - SEE SHEET NO. 24



MODIFIED  
PLANS

CENTERLINE ROAD  
(150' R/W)

LOD  
LINE

IMPACT #37.G  
INFRASTRUCTURE 2  
WETLAND C-F FILL  
1.13 AC.

IMPACT #37.E  
INFRASTRUCTURE 2  
WETLAND C-P FILL  
5.08 AC.

IMPACT #37.F  
INFRASTRUCTURE 2  
WETLAND C-B FILL  
0.89 AC.

SHEET 23

MATCH LINE - SEE SHEET NO. 22

### PROJECT SOTER

PROPOSED ACTIVITY  
WETLAND FILL

CLIENT:  
BERKELEY COUNTY ECONOMIC DEVELOPMENT

LOCATION: BERKELEY COUNTY, SC

DATE: 02.03.16      DRAWN BY: MCL      SHEET: 23 OF 35  
JOB NUMBER: J-25492      REVIEWED BY: MBS      SCALE: 1" = 400'



**THOMAS & HUTTON**  
Engineering | Surveying | Planning | GIS | Consulting

1501 Main Street • Suite 760  
Columbia, SC 29201 • 803.451.6789

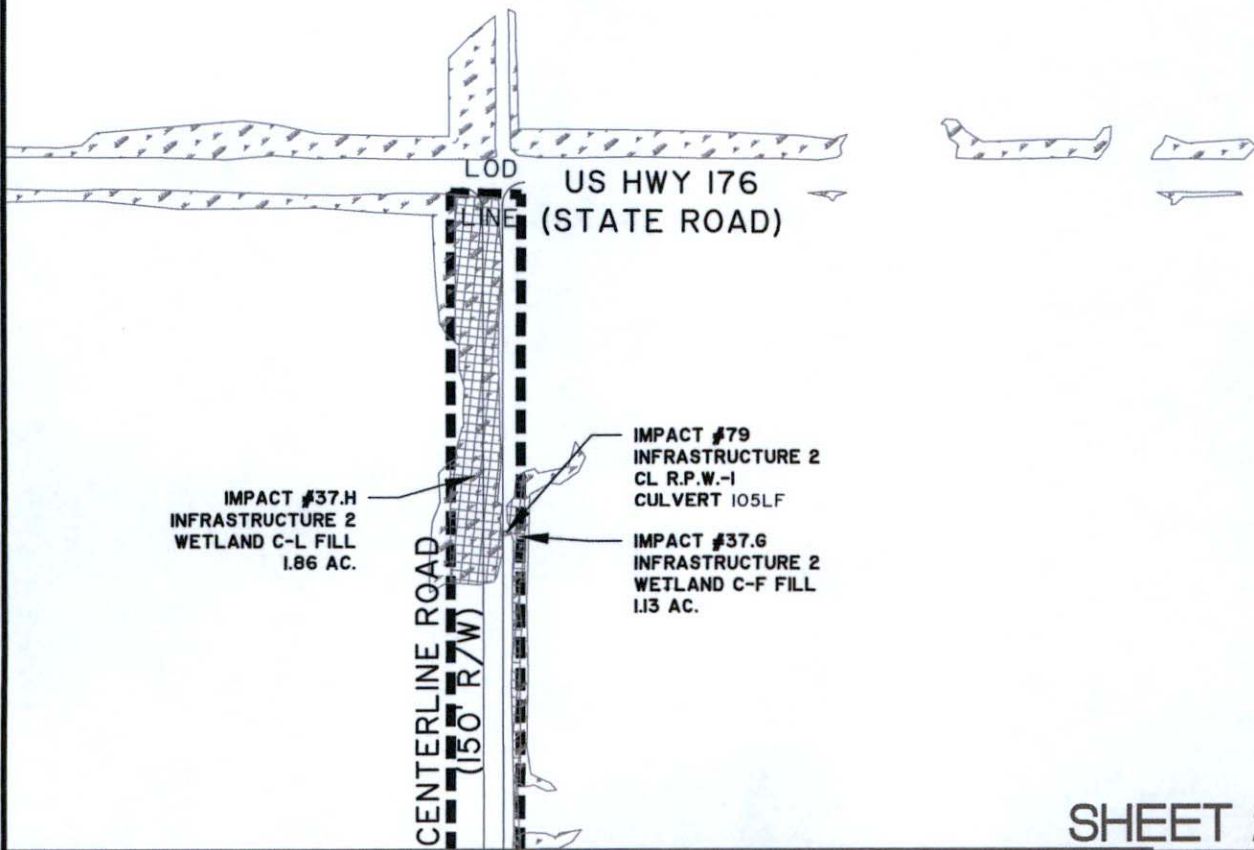
[www.thomasandhutton.com](http://www.thomasandhutton.com)



Z:\25492\25492.0000\Engineering\Drawings\Exhibits\Wetlands\Wetland Permit exhibits - for impact to rev.dwg - Dec 15, 2015 - 5:09:23 PM



# MODIFIED PLANS



## SHEET 24

MATCH LINE - SEE SHEET NO. 23

### PROJECT SOTER

PROPOSED ACTIVITY  
WETLAND FILL

CLIENT:  
BERKELEY COUNTY ECONOMIC DEVELOPMENT

LOCATION: BERKELEY COUNTY, SC

DATE: 02.03.16

JOB NUMBER: J-25492

DRAWN BY: MCL

REVIEWED BY: MBS

SHEET: 24 OF 35

SCALE: 1" = 400'

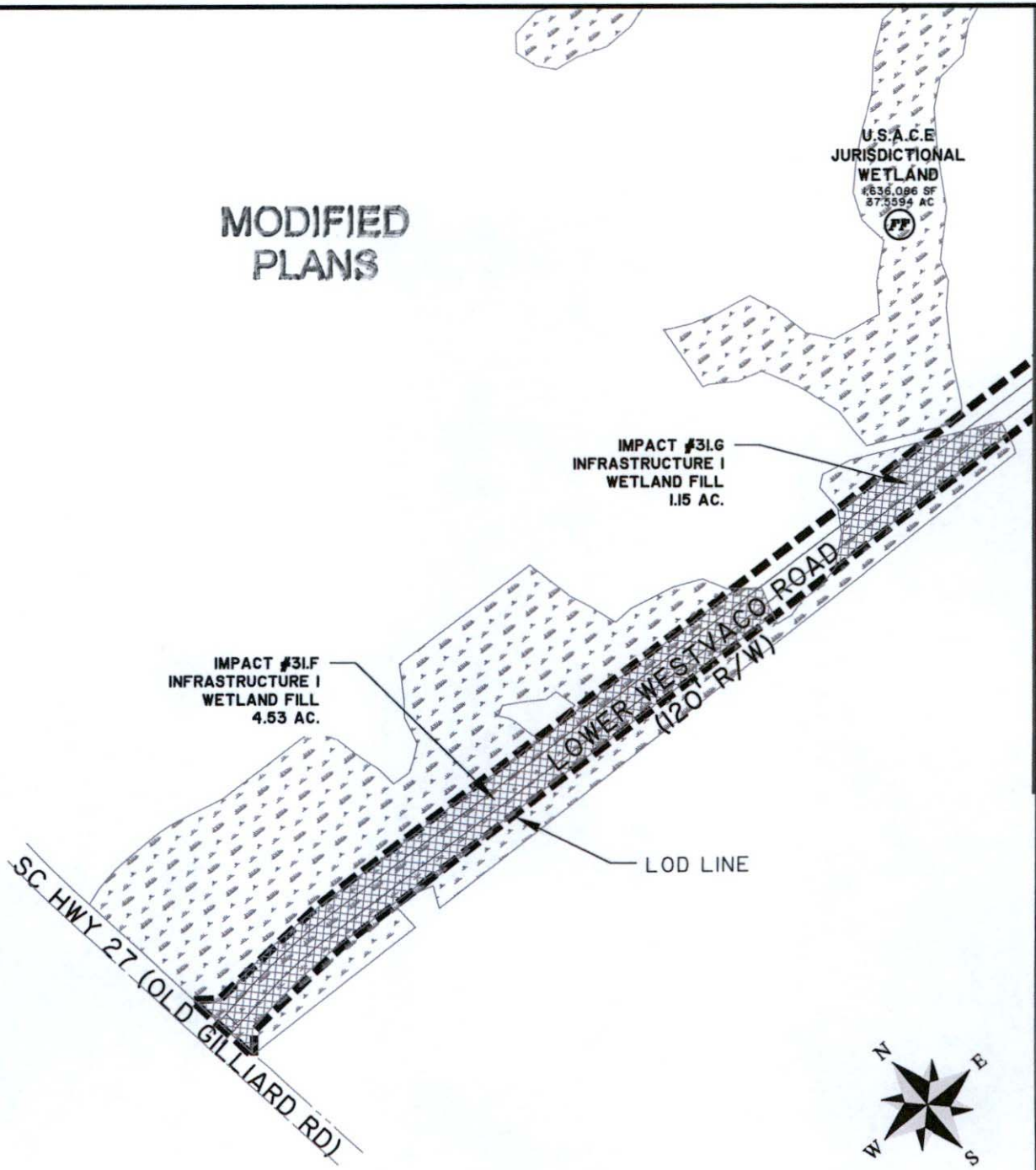
**THOMAS & HUTTON**  
Engineering | Surveying | Planning | GIS | Consulting

1501 Main Street • Suite 760  
Columbia, SC 29201 • 803.451.6789

[www.thomasandhutton.com](http://www.thomasandhutton.com)

Z:\25492\25492.0000\Engineering\Drawings\Exhibits\Wetlands\work\Wetland Permit exhibits - for impact to row.dwg - Dec 15, 2015 - 5:09:23 PM

# MODIFIED PLANS



MATCH LINE - SEE SHEET NO. 26



## SHEET 25

### PROJECT SOTER

PROPOSED ACTIVITY  
WETLAND FILL

CLIENT:  
BERKELEY COUNTY ECONOMIC DEVELOPMENT

LOCATION: BERKELEY COUNTY, SC	DRAWN BY: MCL	SHEET: 25 OF 35
DATE: 02.03.16	REVIEWED BY: MBS	SCALE: 1" = 400.0004'
JOB NUMBER: J-25492		

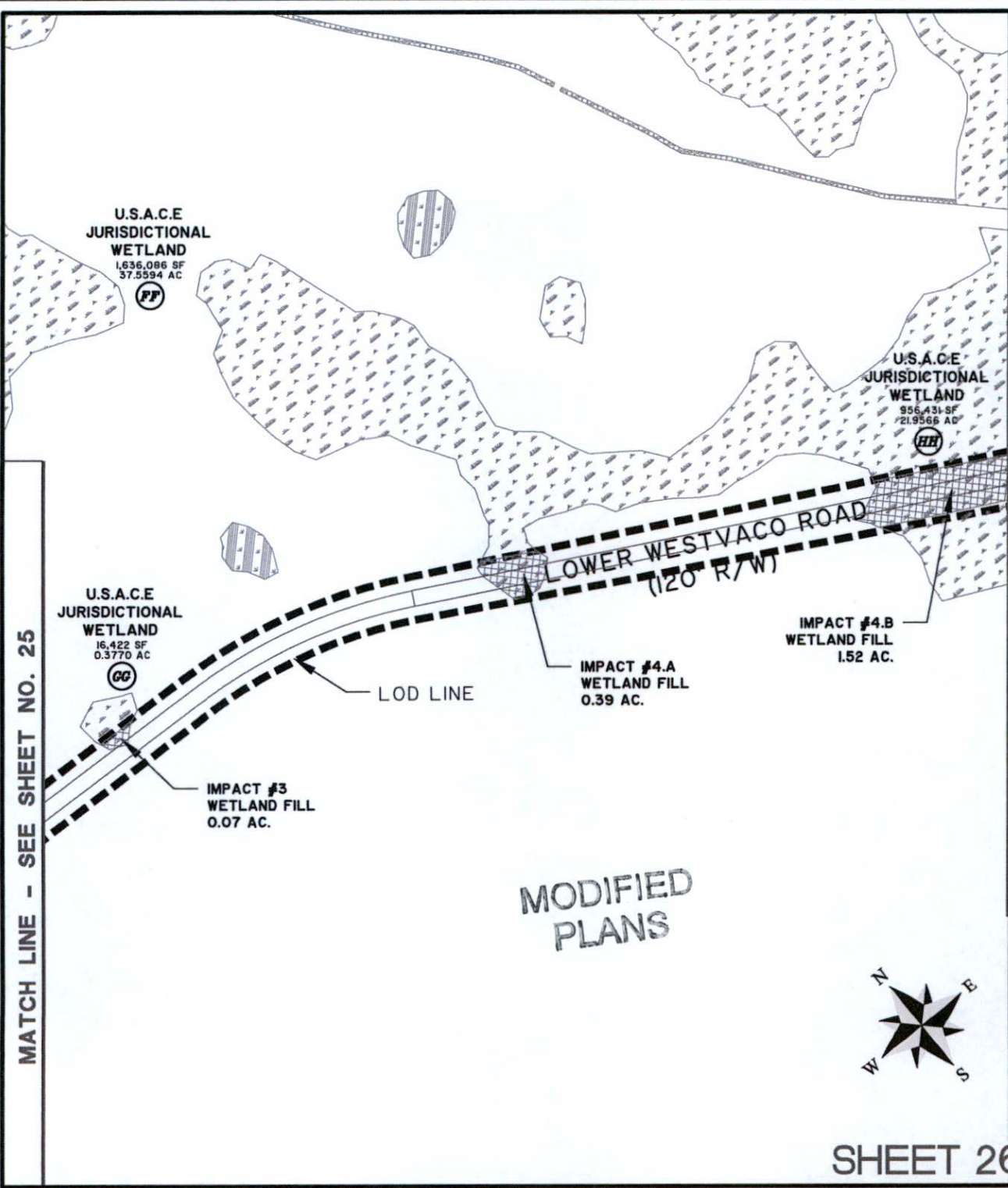
**THOMAS & HUTTON**  
Engineering | Surveying | Planning | GIS | Consulting

1501 Main Street • Suite 760  
Columbia, SC 29201 • 803.451.6789

[www.thomasandhutton.com](http://www.thomasandhutton.com)



Z:\25492\25492.0000\Engineering\Drawings\Exhibits\Wetlands\work\Wetland Permit exhibits - for impact to rev.dwg - Dec 15, 2015 - 5:09:23 PM



MATCH LINE - SEE SHEET NO. 25

MATCH LINE - SEE SHEET NO. 27



SHEET 26

### PROJECT SOTER

PROPOSED ACTIVITY  
WETLAND FILL

CLIENT:  
BERKELEY COUNTY ECONOMIC DEVELOPMENT

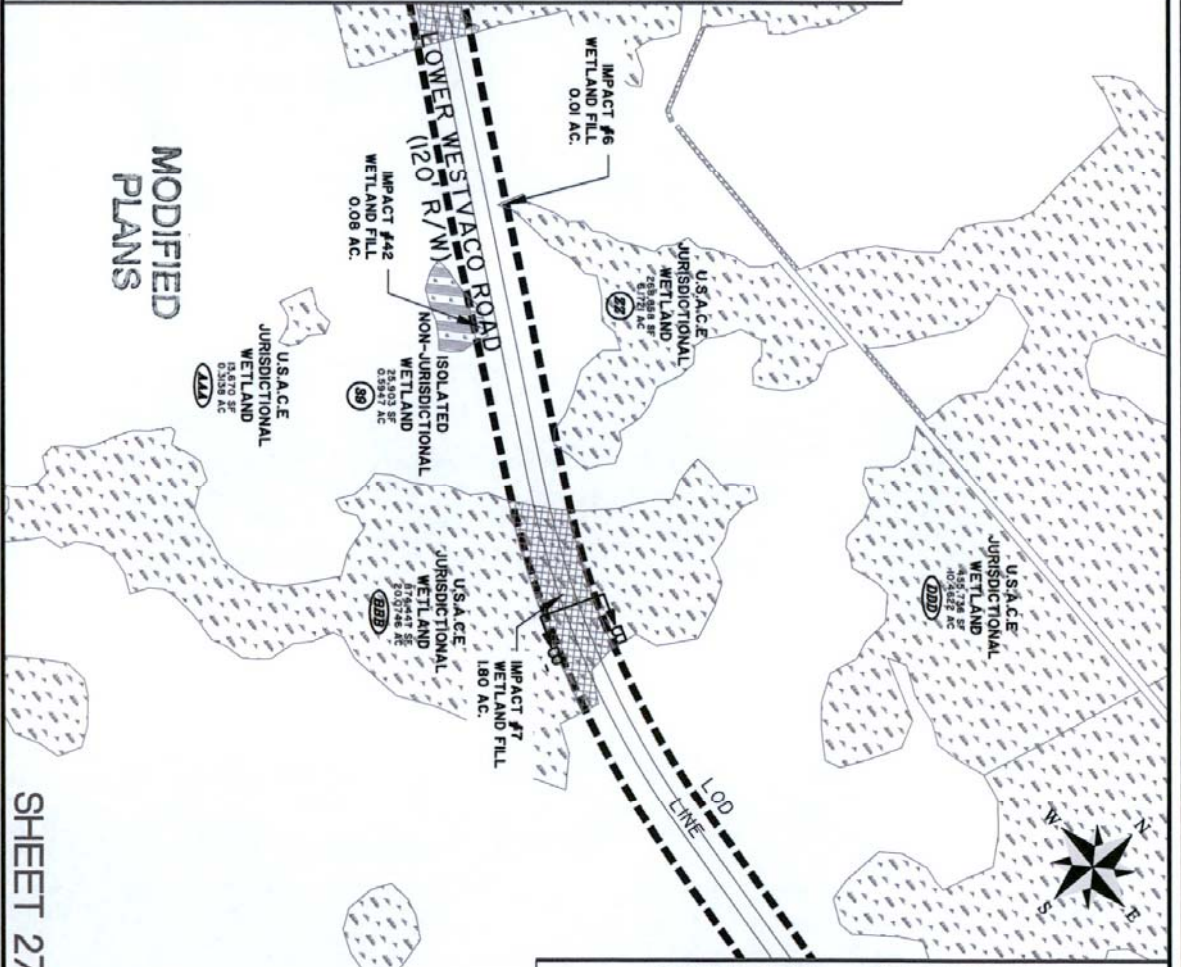
LOCATION: BERKELEY COUNTY, SC	DRAWN BY: MCL	SHEET: 26 OF 35
DATE: 02.03.16	REVIEWED BY: MBS	SCALE: 1" = 400'
JOB NUMBER: J-25492		

**THOMAS & HUTTON**  
Engineering | Surveying | Planning | GIS | Consulting

1501 Main Street • Suite 760  
Columbia, SC 29201 • 803.451.6789

[www.thomasandhutton.com](http://www.thomasandhutton.com)

MATCH LINE - SEE SHEET NO. 26



MATCH LINE - SEE SHEET NO. 28

SHEET 27

**PROJECT SOTER**  
PROPOSED ACTIVITY  
WETLAND FILL

CLIENT:  
BERKELEY COUNTY ECONOMIC DEVELOPMENT  
LOCATION: BERKELEY COUNTY, SC  
DATE: 02/03/16  
JOB NUMBER: J-25492

DRAWN BY: MCL  
REVIEWED BY: MBS  
SHEET: 27 OF 35  
SCALE: 1" = 400'



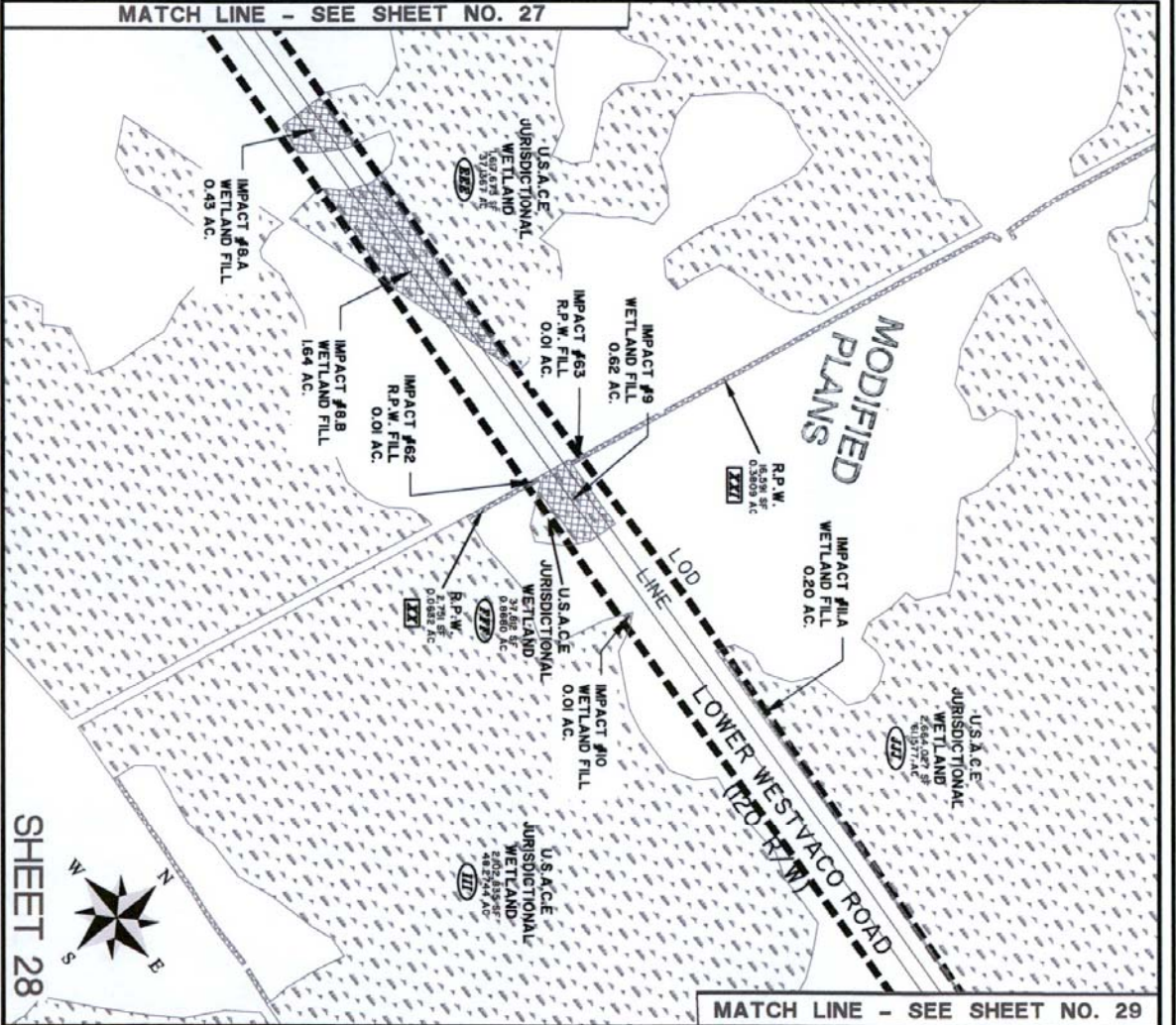
Engineering | Surveying | Planning | GIS | Consulting

1501 Main Street • Suite 760  
Columbia, SC 29201 • 803.451.6789

www.thomasonhutton.com



MATCH LINE - SEE SHEET NO. 27



MATCH LINE - SEE SHEET NO. 29

SHEET 28

# PROJECT SOTER

PROPOSED ACTIVITY  
WETLAND FILL

CLIENT:  
BERKELEY COUNTY ECONOMIC DEVELOPMENT  
LOCATION: BERKELEY COUNTY, SC  
DATE: 02/03/16  
JOB NUMBER: J-25492

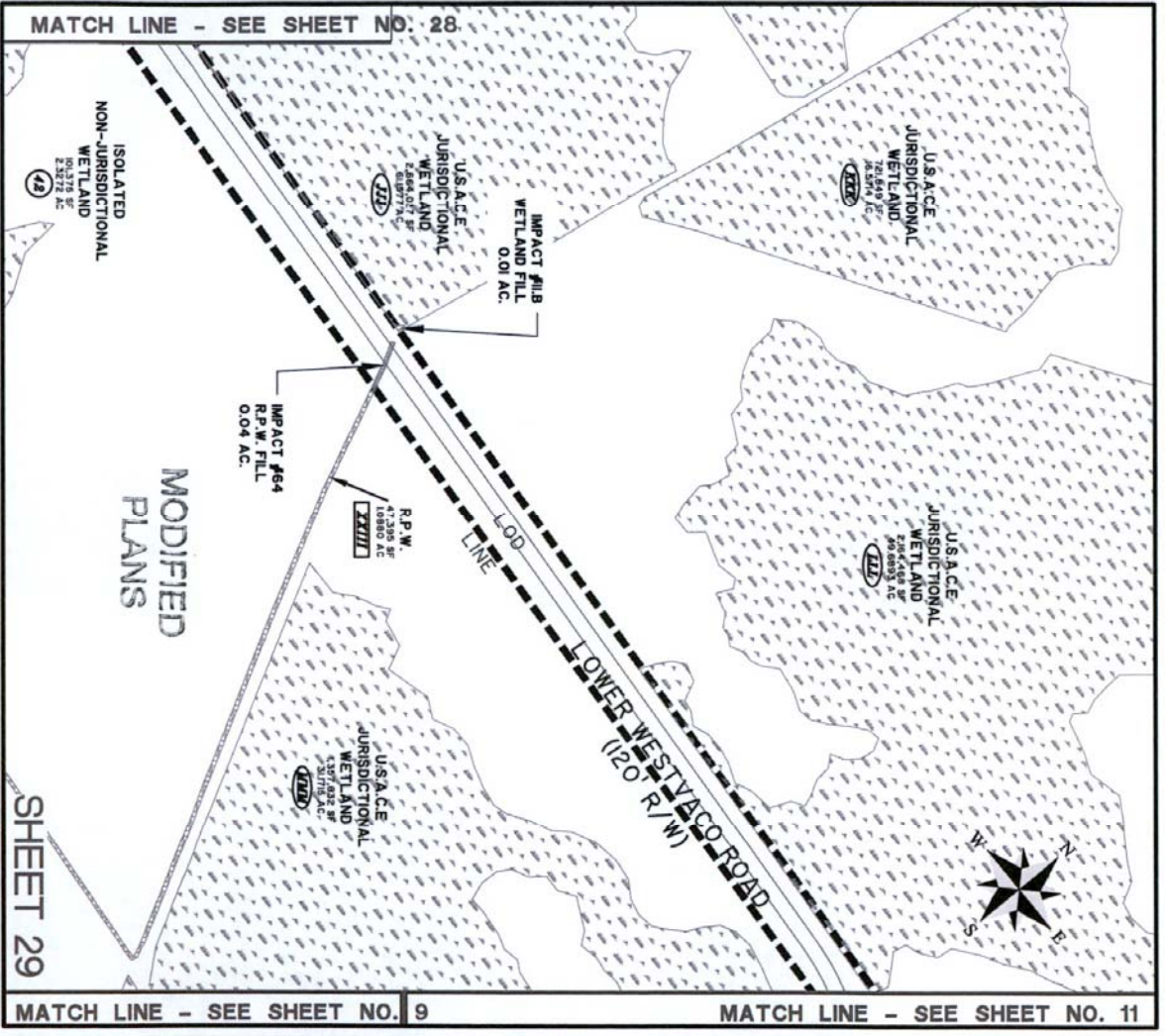
DRAWN BY: MCL  
REVIEWED BY: MBS  
SHEET: 28 OF 35  
SCALE: 1" = 400'



**THOMAS & HUTTON**  
Engineering | Surveying | Planning | GIS | Consulting

1501 Main Street • Suite 760  
Columbia, SC 29201 • 803.451.6789

www.thomasandhutton.com



**PROJECT SOTER**  
 PROPOSED ACTIVITY  
**WETLAND FILL**

CLIENT:  
**BERKELEY COUNTY ECONOMIC DEVELOPMENT**

LOCATION: BERKELEY COUNTY, SC  
 DATE: 02.03.16  
 JOB NUMBER: J-25492

DRAWN BY: MCL  
 REVIEWED BY: MBS

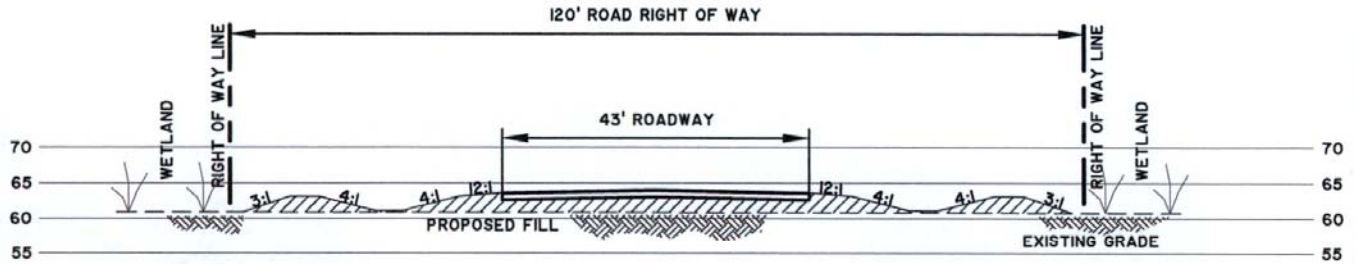
SHEET: 29 OF 35  
 SCALE: 1" = 400'

**THOMAS & HUTTON**  
 Engineering | Surveying | Planning | GIS | Consulting

1501 Main Street • Suite 760  
 Columbia, SC 29201 • 803.451.6789  
 www.thomasandhutton.com



# MODIFIED PLANS



## TYPICAL LOWER WESTVACO ROAD SECTION (SECTION B-B')

SCALE: 1" = 20'

### PROJECT SOTER

PROPOSED ACTIVITY:  
WETLAND FILL

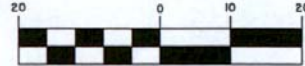
CLIENT:

BERKELEY COUNTY ECONOMIC DEVELOPMENT

LOCATION: BERKELEY COUNTY, SC

DATE: APRIL 2, 2015

JOB NUMBER: J-25492



DRAWN BY: MAM

REVIEWED BY: MBS

SHEET: 31 of 35

SCALE: 1" = 20'

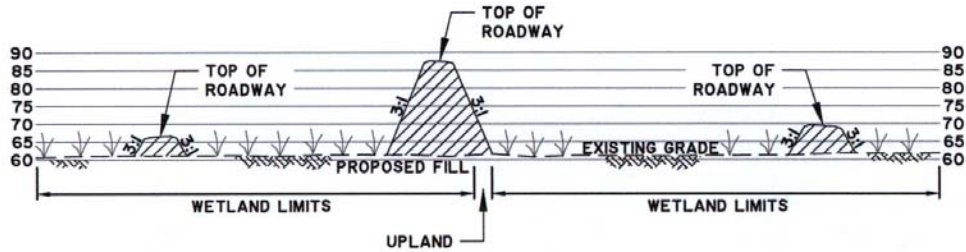


**THOMAS & HUTTON**  
Engineering | Surveying | Planning | GIS | Consulting

1501 Main Street • Suite 760  
Columbia, SC 29201 • 803.451.6789

[www.thomasandhutton.com](http://www.thomasandhutton.com)

MODIFIED  
PLANS



**TYPICAL INTERCHANGE SECTION (SECTION C-C')**

SCALE: HOR: 1" = 200'  
VERT: 1" = 40'

**PROJECT SOTER**

PROPOSED ACTIVITY:  
WETLAND FILL

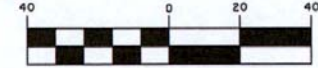
CLIENT:

BERKELEY COUNTY ECONOMIC DEVELOPMENT

LOCATION: BERKELEY COUNTY, SC

DATE: APRIL 2, 2015

JOB NUMBER: J-25492



DRAWN BY: MAM

REVIEWED BY: MBS

SHEET: 32 of 35

SCALE: 1" = 40'

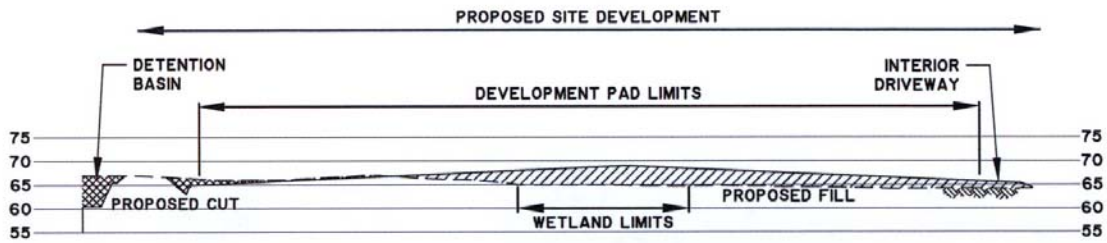
**THOMAS & HUTTON**  
Engineering | Surveying | Planning | GIS | Consulting

1501 Main Street • Suite 760  
Columbia, SC 29201 • 803.451.6789

[www.thomasandhutton.com](http://www.thomasandhutton.com)



MODIFIED  
PLANS



### TYPICAL DEVELOPMENT PAD SECTION (SECTION D-D')

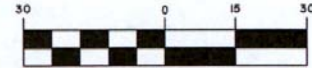
SCALE: HOR: 1" = 300'  
VERT: 1" = 30'

#### PROJECT SOTER

PROPOSED ACTIVITY:  
WETLAND FILL

CLIENT:  
BERKELEY COUNTY ECONOMIC DEVELOPMENT

LOCATION: BERKELEY COUNTY, SC  
DATE: APRIL 2, 2015  
JOB NUMBER: J-25492



DRAWN BY: MAM  
REVIEWED BY: MBS

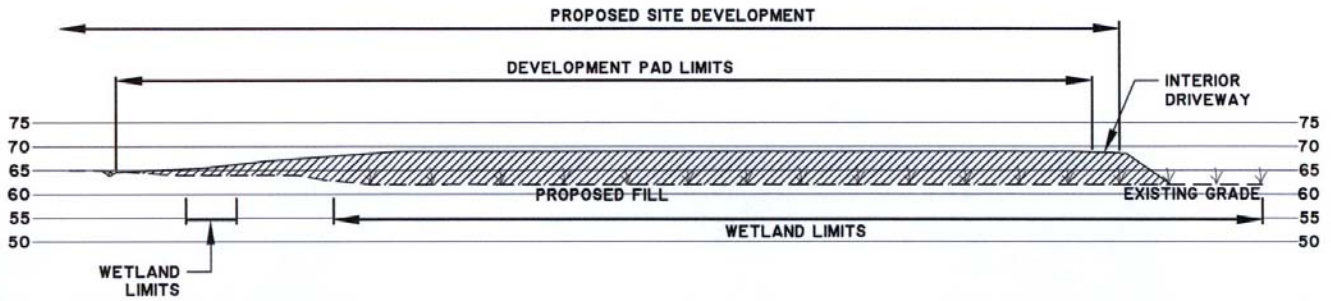
SHEET: 33 of 35  
SCALE: 1" = 30'

**THOMAS & HUTTON**  
Engineering | Surveying | Planning | GIS | Consulting

1501 Main Street • Suite 760  
Columbia, SC 29201 • 803.451.6789

[www.thomasandhutton.com](http://www.thomasandhutton.com)

# MODIFIED PLANS



## TYPICAL DEVELOPMENT PAD SECTION (SECTION F-F')

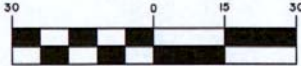
SCALE: HOR: 1" = 300'  
 VERT: 1" = 30'

### PROJECT SOTER

PROPOSED ACTIVITY:  
 WETLAND FILL

CLIENT:  
 BERKELEY COUNTY ECONOMIC DEVELOPMENT

LOCATION: BERKELEY COUNTY, SC  
 DATE: APRIL 2, 2015  
 JOB NUMBER: J-25492



DRAWN BY: MAM  
 REVIEWED BY: MBS  
 SHEET: 35 of 35  
 SCALE: 1" = 30'

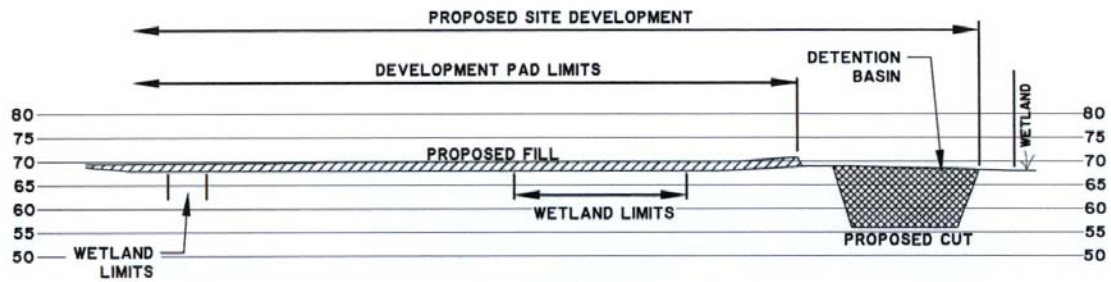
### THOMAS & HUTTON

Engineering | Surveying | Planning | GIS | Consulting

1501 Main Street • Suite 760  
 Columbia, SC 29201 • 803.451.6789

[www.thomasandhutton.com](http://www.thomasandhutton.com)





MODIFIED  
PLANS

**TYPICAL DEVELOPMENT PAD SECTION (SECTION E-E')**

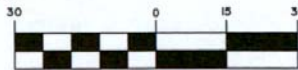
SCALE: HOR: 1" = 300'  
VERT: 1" = 30'

**PROJECT SOTER**

PROPOSED ACTIVITY:  
WETLAND FILL

CLIENT:  
BERKELEY COUNTY ECONOMIC DEVELOPMENT

LOCATION: BERKELEY COUNTY, SC  
DATE: APRIL 2, 2015  
JOB NUMBER: J-25492



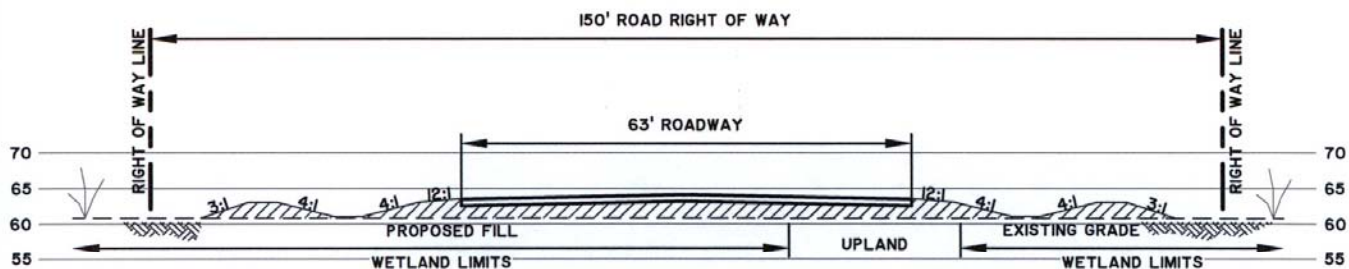
DRAWN BY: MAM  
REVIEWED BY: MBS  
SHEET: 34 of 35  
SCALE: 1" = 30'

**THOMAS & HUTTON**  
Engineering | Surveying | Planning | GIS | Consulting

1501 Main Street • Suite 760  
Columbia, SC 29201 • 803.451.6789

[www.thomasandhutton.com](http://www.thomasandhutton.com)

MODIFIED  
PLANS



**TYPICAL CENTERLINE ROAD SECTION (SECTION A-A')**

SCALE: 1" = 20'

**PROJECT SOTER**

PROPOSED ACTIVITY:  
WETLAND FILL

CLIENT:

BERKELEY COUNTY ECONOMIC DEVELOPMENT

LOCATION: BERKELEY COUNTY, SC

DATE: APRIL 2, 2015

JOB NUMBER: J-25492



DRAWN BY: MAM

REVIEWED BY: MBS

SHEET: 30 of 35

SCALE: 1" = 20'

**THOMAS & HUTTON**  
Engineering | Surveying | Planning | GIS | Consulting

1501 Main Street • Suite 760  
Columbia, SC 29201 • 803.451.6789

[www.thomasandhutton.com](http://www.thomasandhutton.com)



17  
18  
19  
20  
21  
22  
23  
24  
25  
26  
27  
28  
29  
30  
31  
32  
33  
34  
35  
36  
37  
38  
39  
40  
41  
42  
43  
44  
45  
46  
47  
48  
49  
50  
51  
52  
53  
54  
55  
56  
57  
58  
59  
60  
61  
62  
63  
64  
65  
66  
67  
68  
69  
70  
71  
72  
73  
74  
75  
76  
77  
78  
79  
80  
81  
82  
83  
84  
85  
86  
87  
88  
89  
90  
91  
92  
93  
94  
95  
96  
97  
98  
99  
100

101  
102  
103  
104  
105  
106  
107  
108  
109  
110  
111  
112  
113  
114  
115  
116  
117  
118  
119  
120  
121  
122  
123  
124  
125  
126  
127  
128  
129  
130  
131  
132  
133  
134  
135  
136  
137  
138  
139  
140  
141  
142  
143  
144  
145  
146  
147  
148  
149  
150  
151  
152  
153  
154  
155  
156  
157  
158  
159  
160  
161  
162  
163  
164  
165  
166  
167  
168  
169  
170  
171  
172  
173  
174  
175  
176  
177  
178  
179  
180  
181  
182  
183  
184  
185  
186  
187  
188  
189  
190  
191  
192  
193  
194  
195  
196  
197  
198  
199  
200

# MODIFIED PLANS

36. Individually list wetland impacts including mechanized clearing, fill, excavation, flooding, draining, shading, etc. and attach a site map with location of each impact (attach additional sheets if needed).

Impact #	Wetland Title	Wetland Type	Distance to Receiving Water Body (LF)	Purpose of Impact (road crossing, impoundment, flooding, etc)	Impacts Permitted Under SAC-2015-0476-SIR (acres)	Proposed Impacts Under Permit Modification (acres)	Net Gain/Loss of Impact	Wetland Permit Drawing Page
1	AA	Wet Pine Plantation	16,500	Fill	1.23	1.23	0	18
2	FF	Wet Pine Plantation	8,650	Fill	1.00	0.00	-1.00	25,26
3	GG	Gum Depression	8,500	Fill	0.00	0.07	+0.07	26
4	HH	Wet Pine Plantation	4,400	Fill	1.68	1.91	+0.23	
4.A	HH	Wet Pine Plantation	4,400	Fill	0.37	0.39	+0.02	26
4.B	HH	Wet Pine Plantation	4,400	Fill	1.31	1.52	+0.21	26,27
5	VV	Wet Pine Plantation	19,900	Fill	0.46	0.46	0	17,21
6	ZZ	Wet Pine Plantation	4,700	Fill	0.01	0.01	0	27
7	BBB	Wet Pine Plantation	4,000	Fill	1.25	1.80	+0.55	27
8	EEE	Wet Pine Plantation	6,100	Fill	1.67	2.07	+0.40	
8.A	EEE	Wet Pine Plantation	6,100	Fill	0.35	0.43	+0.08	28
8.B	EEE	Wet Pine Plantation	6,100	Fill	1.32	1.64	+0.32	28
9	FFF	Gum Depression	6,650	Fill	0.50	0.62	+0.12	28
10	III	Wet Pine Plantation	6,000	Fill	0.00	0.01	+0.01	28
11	JJJ	Wet Pine Plantation	7,000	Fill	0.00	0.21	+0.21	
11.A	JJJ	Wet Pine Plantation	7,000	Fill	0.00	0.20	+0.20	28
11.B	JJJ	Wet Pine Plantation	7,000	Fill	0.00	0.01	+0.01	29
12	MMM	Wet Pine Plantation	10,200	Fill	0.58	0.58	0	
12.A	MMM	Wet Pine Plantation	10,200	Fill	0.25	0.25	0	9
12.B	MMM	Wet Pine Plantation	10,200	Fill	0.33	0.33	0	11
13	NNN	Wet Pine Plantation	10,200	Fill	0.77	0.77	0	9
14	OOO	Wet Pine Plantation	11,780	Fill	64.40	64.40	0	
14.A	OOO	Wet Pine Plantation	11,780	Fill	0.94	0.94	0	9,11
14.B	OOO	Wet Pine Plantation	11,780	Fill	63.46	63.46	0	9,10,11,12
15	PPP	Wet Pine Plantation	12,200	Fill	0.08	0.08	0	11
16	QQQ	Gum Depression	12,700	Fill	0.69	0.69	0	11
17	RRR	Gum Depression	13,500	Fill	0.13	0.13	0	16



MODIFIED PLANS

18	SSS	Wet Pine Plantation	13,700	0.55	0.55	0.55	0	11
19	UUU	Wet Pine Plantation	14,400	4.48	4.48	4.48	0	11
19A	UUU	Wet Pine Plantation	14,400	0.66	0.66	0.66	0	11
19B	UUU	Wet Pine Plantation	14,400	1.90	1.90	1.90	0	12
19.C	UUU	Wet Pine Plantation	14,400	1.92	1.92	1.92	0	12
20	VVV	Wet Pine Plantation	17,100	9.55	9.55	9.55	0	15,18
21	WWW	Wet Pine Plantation	17,200	9.90	9.90	9.90	0	12,14,15
22	XXX	Gum Depression	16,500	0.73	0.73	0.73	0	13
23	DDD	Bottomland Hardwood	5,450	3.25	3.25	3.25	0	6
24	DDD	Bottomland Hardwood	5,450	14.47	14.47	14.47	0	5
24A	DDD	Bottomland Hardwood	5,450	0.70	0.70	0.70	0	5
24B	DDD	Bottomland Hardwood	5,450	13.77	13.77	13.77	0	5,6
25	DDD	Bottomland Hardwood	5,450	1.07	1.07	1.07	0	6
25A	DDD	Bottomland Hardwood	5,450	0.83	0.83	0.83	0	6
25B	DDD	Bottomland Hardwood	5,450	0.25	0.25	0.25	0	6
26	EEEE	Wet Pine Plantation	8,300	5.46	5.46	5.46	+1.96	8
26A	EEEE	Wet Pine Plantation	8,300	2.18	2.18	2.18	0	8
26B	EEEE	Wet Pine Plantation	8,300	3.28	3.28	3.28	0	9
26.C	EEEE	Wet Pine Plantation	8,300	0.00	0.00	1.96	+1.96	8
27	FFFF	Wet Pine Plantation	8,400	0.34	0.34	0.34	0	8
28	HHHH	Wet Pine Plantation	9,300	6.22	6.22	6.27	+0.05	8
28A	HHHH	Wet Pine Plantation	9,300	0.39	0.39	0.44	+0.05	8
28B	HHHH	Wet Pine Plantation	9,300	5.83	5.83	5.83	0	10
29	MMMM	Non-Alluvial Swamp Forest	6,800	2.14	2.14	2.14	0	6
29A	MMMM	Non-Alluvial Swamp Forest	6,800	0.15	0.15	0.15	0	6
29B	MMMM	Non-Alluvial Swamp Forest	6,800	2.07	2.07	2.07	0	6
30	NNNN	Wet Pine Plantation	10,500	1.61	1.61	1.71	+0.10	6,8
31	Infrastructure 1	Wet Pine Plantation	7,900	26.95	26.95	29.36	+2.41	5,6,7
31A	Infrastructure 1	Wet Pine Plantation	7,900	13.28	13.28	13.28	0	5,6,7
31B	Infrastructure 1	Wet Pine Plantation	7,900	4.36	4.36	4.36	0	5,6
31C	Infrastructure 1	Wet Pine Plantation	7,900	0.24	0.24	0.24	0	6
31D	Infrastructure 1	Wet Pine Plantation	7,900	0.07	0.07	0.07	0	6
31E	Infrastructure 1	Wet Pine Plantation	7,900	5.73	5.73	5.73	0	6,7
31.F	Infrastructure 1	Wet Pine Plantation	1,750	1.96	1.96	4.53	+2.57	25

MODIFIED PLANS

31.G	Infrastructure 1	Wet Pine Plantation	1,750	Fill	1.33	1.15	-0.18	25
32	Infrastructure 1	Wet Pine Plantation	7,900	Clearing	2.43	2.43	0	5
33	Infrastructure 1	Wet Pine Plantation	7,900	Shading	1.84	1.84	0	
33.A	Infrastructure 1	Wet Pine Plantation	7,900	Shading	0.43	0.43	0	6
33.B	Infrastructure 1	Wet Pine Plantation	7,900	Shading	0.66	0.66	0	6
33.C	Infrastructure 1	Wet Pine Plantation	7,900	Shading	0.54	0.54	0	6
33.D	Infrastructure 1	Wet Pine Plantation	7,900	Shading	0.21	0.21	0	6
34	XX	Gum Depression	2,590	Fill	1.67	1.67	0	18
35	VVV	Wet Pine Plantation	5,400	Fill	0.11	0.11	0	15
36	WWW	Wet Pine Plantation	6,000	Fill	2.93	2.93	0	15
37	Infrastructure 2	Wet Pine Plantation	1,750	Fill	20.87	17.64	-3.23	
37.A	C-A	Wet Pine Plantation	1,750	Fill	0.38	0.13	-0.25	21
37.B	C-B	Wet Pine Plantation	1,750	Fill	1.81	1.68	-0.13	21,22
37.C	C-Q	Wet Pine Plantation	1,750	Fill	2.61	2.44	-0.17	21,22
37.D	C-V	Wet Pine Plantation	1,750	Fill	4.47	4.43	-0.04	22
37.E	C-P	Wet Pine Plantation	1,750	Fill	5.43	5.08	-0.35	22,23
37.F	C-B	Wet Pine Plantation	1,750	Fill	0.87	0.89	+0.02	22,23
37.G	C-F	Wet Pine Plantation	1,750	Fill	0.90	1.13	+0.23	23,24
37.H	C-L	Wet Pine Plantation	1,750	Fill	2.19	1.86	-0.33	24
37.I	C-I	Wet Pine Plantation	1,750	Fill	0.01	0.00	-0.01	24
37.J	C-G	Wet Pine Plantation	1,750	Fill	0.02	0.00	-0.02	24
37.K	C-H	Wet Pine Plantation	1,750	Fill	0.32	0.00	-0.32	24
37.L	C-J	Wet Pine Plantation	1,750	Fill	0.60	0.00	-0.60	24
37.M	C-K	Wet Pine Plantation	1,750	Fill	1.02	0.00	-1.02	24
38	34	Depression	N/A	Excavation	0.34	0.34	0	17
39	35	Depression	N/A	Fill	0.86	0.86	0	17,21
40	36	Depression	N/A	Fill	1.22	1.22	0	17
41	37	Depression	N/A	Fill	0.35	0.35	0	18
42	39	Depression	N/A	Fill	0.01	0.08	+0.07	27
43	47	Depression	N/A	Fill	3.22	3.22	0	12
44	48	Depression	N/A	Fill	0.95	0.95	0	12
45	49	Depression	N/A	Fill	1.62	1.62	0	15
46	50	Depression	N/A	Fill	0.37	0.37	0	15
47	53	Depression	N/A	Fill	0.50	0.50	0	15

MODIFIED PLANS





37. Individually list all seasonal and perennial stream impacts and attach a site map with location of each impact (attach additional sheets).

Impact #	R.P.W. Title	Seasonal or Perennial Flow	Average Width (LF)	Impact Type (road crossing, impoundment, flooding, etc.)	Impacts Permitted Under SAC-2015-0476-SIR (acres)	Proposed Impacts Under Permit Modification (acres)	Net Gain/Loss of Impact	Wetland Permit Drawing Page
62	XX	Perennial	10	Fill	0.00	0.01	+0.01	28
63	XXI	Perennial	10	Fill	0.01	0.01	0	28
64	XXIII	Perennial	10	Fill	0.03	0.04	+0.01	29
65	XXIV	Perennial	10	Fill	0.00	0.01	+0.01	11
66	XXIX	Perennial	10	Fill	0.20			
66.A	XXIX	Perennial	10	Fill	0.04	0.06	+0.02	8
66.B	XXIX	Perennial	10	Fill	0.16	0.16	0	8
67	XXVI	Perennial	10	Excavation	0.21	0.14	-0.07	15
68	XXVI	Perennial	10	Fill	0.00			
68.A	XXVI	Perennial	10	Fill	0.00	0.04	+0.04	15
68.B	XXVI	Perennial	10	Fill	0.00	0.02	+0.02	15
68.C	XXVI	Perennial	10	Fill	0.00	0.02	+0.02	15
69	XXVII	Perennial	10	Fill	0.08	0.08	0	14
70	XXX	Perennial	10	Fill	0.02	0.02	0	8
71	XXXI	Perennial	10	Fill	0.09	0.09	0	8
72	XXXII	Perennial	10	Excavation	0.28			
72.A	XXXII	Perennial	10	Excavation	0.00	0.05	+0.05	10
72.B	XXXII	Perennial	10	Excavation	0.28	0.28	0	10
73	XXXII	Perennial	10	Fill	0.07	0.01	-0.06	10
74	XXXIII	Perennial	10	Excavation	0.03	0.21	+0.18	13
75	XXXIII	Perennial	10	Fill	0.31	0.13	-0.18	13
76	XXXIV	Perennial	10	Excavation	0.10			
76.A	XXXIV	Perennial	10	Excavation	0.10	0.14	+0.04	13
76.B	XXXIV	Perennial	10	Excavation	0.00	0.02	+0.02	13
77	XXXIV	Perennial	10	Fill	0.41			
77.A	XXXIV	Perennial	10	Fill	0.23	0.33	+0.10	13
77.B	XXXIV	Perennial	10	Fill	0.18	0.01	-0.17	13
78	XXXVI	Perennial	10	Fill	0.01	0.01	0	8
79	CL RPW-1	Perennial	10	Culvert	105 LF	105 LF	0	20
Total Stream Impacts (Acres)					1.85	1.89	+0.04	

MODIFIED PLANS