



South Carolina  
Department of Transportation

DM0500

May 26, 2000

**MEMORANDUM TO GROUP LEADERS AND CONSULTANTS**

**SUBJECT:** End Wall Backfill

---

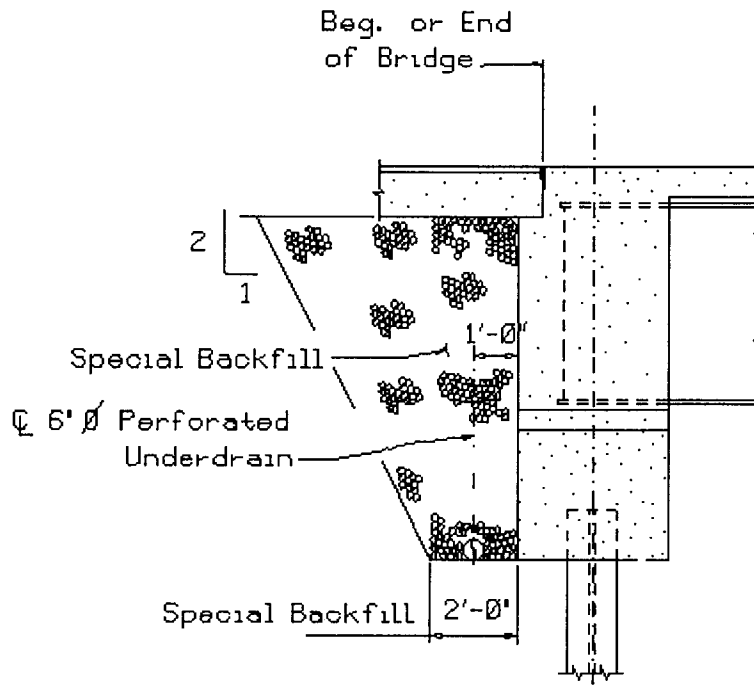
This memorandum will supercede memorandum DM0796. The end walls of integral end bents are to be cast after the concrete for the slab has been cast. No construction joint will be allowed at the top of the end wall unless designed and detailed for this joint. The embankment is to be sloped on a 1:2 for construction purposes and backfilled with a special material. See attached Detail "A".

Randy R. Cannon, P. E.  
Bridge Design Engineer

cc: Assistant Bridge Design Engineers  
Bridge Construction Engineer

File: PC/JLC





DETAIL "A"