



South Carolina
Department of Transportation

955 Park Street
Post Office Box 191
Columbia, South Carolina 29202-0191

Office of the Director
(803) 737-1302 • Fax (803) 737-2038

Deputy Director of Engineering
(803) 737-1314 • Fax (803) 737-2038

Deputy Director of Finance and Administration
(803) 737-1240 • Fax (803) 737-1719

Deputy Director of Mass Transit
(803) 737-9720 • Fax (803) 737-9739

BDF

DM0397

March 3, 1997

MEMORANDUM TO GROUP LEADERS AND CONSULTANTS

SUBJECT: Detailing Approach Slabs when Adjoining a Trend Guardrail

When detailing an approach slab that has an adjoining Trend guardrail, the approach slab edge shall be terminated 4 1/2 inches (115 mm) inside the bridge gutter line. This is necessary to avoid conflicting with the concrete pad footing required for the Trend Guardrail. (See attached detail).

The detailer shall also eliminate the concrete curb from the approach slab edge when adjoining a Trend guardrail.

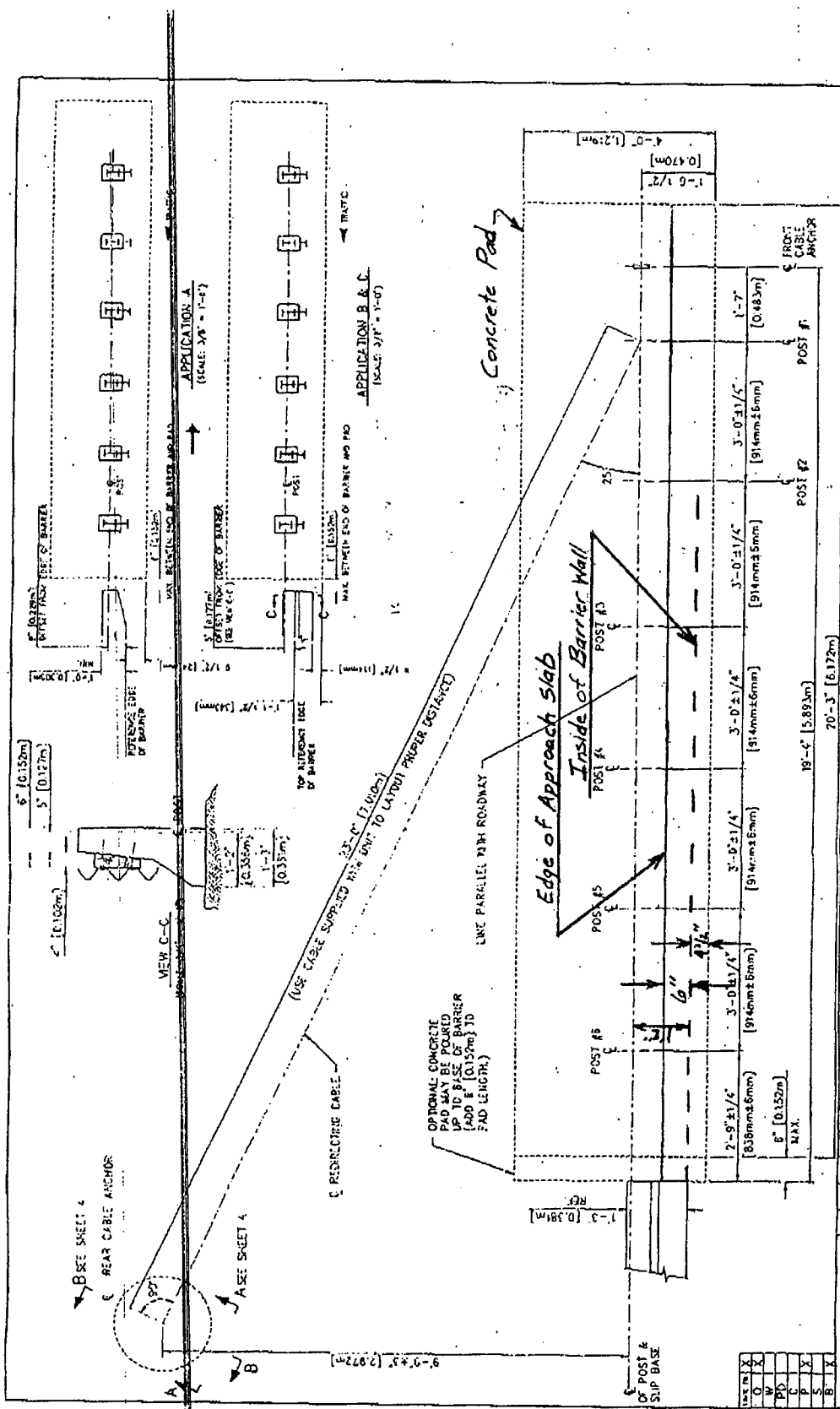
The above detail changes only apply where approach slabs adjoin Trend type guardrails. The detailer can determine the type of guardrail to be used by looking at the road plan and profile sheet.

Randy R. Cannon
Interim Bridge Design Engineer

Attachment

cc: Assistant Bridge Design Engineers

REL/slb



REDUCED

ENERGY ABSORPTION SYSTEMS, INC. ENGINEERING AND RESEARCH DEPARTMENT		SCALE: 1/4" = 1'-0" DATE: 85-02-01	SHEET NO: 3 OF 4
TREND LAYOUT DETAIL		PROJECT NO. _____ SERIAL NO. _____ ORDER NO. _____ COLOR _____	
REFERENCES		PROJECT NO. _____ SERIAL NO. _____ ORDER NO. _____ COLOR _____	
DESIGN SPEED		M.P.H. _____	
APERTURE C'S		EST. FORCE ON BACKUP STRUCTURE _____ KIPS	
Drawn: _____		10/17/90	
Checked: J.P. Zimm		5/20/90	
Approved: G.S.S.		5/20/90	