



South Carolina  
Department of Transportation

955 Park Street  
Post Office Box 191  
Columbia, South Carolina 29202-0191

BDF

Office of the Director  
(803) 737-1302 ♦ Fax (803) 737-2038

Deputy Director of Engineering  
(803) 737-1314 ♦ Fax (803) 737-2038

Deputy Director of Finance and Administration  
(803) 737-1240 ♦ Fax (803) 737-1719

Deputy Director of Mass Transit  
(803) 737-1280 ♦ Fax (803) 737-1862

DM0496

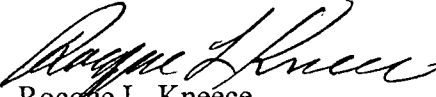
MEMORANDUM TO GROUP LEADERS AND CONSULTANTS

SUBJECT: Thrie Beam Connector Details

It has been brought to our attention that the present dimensioning shown on Road Standard Drawing No. 805-7, 805-9 and 805-9A for the Thrie Beam Terminal Connector pattern does not correspond with (AASHTO-AGC-ARTBA) TAST FORCE NO. 13 MANUAL.

The attached drawing shows the correct dimensions. Beginning with the September, 1996 Letting, all projects should be detailed using these dimensions.

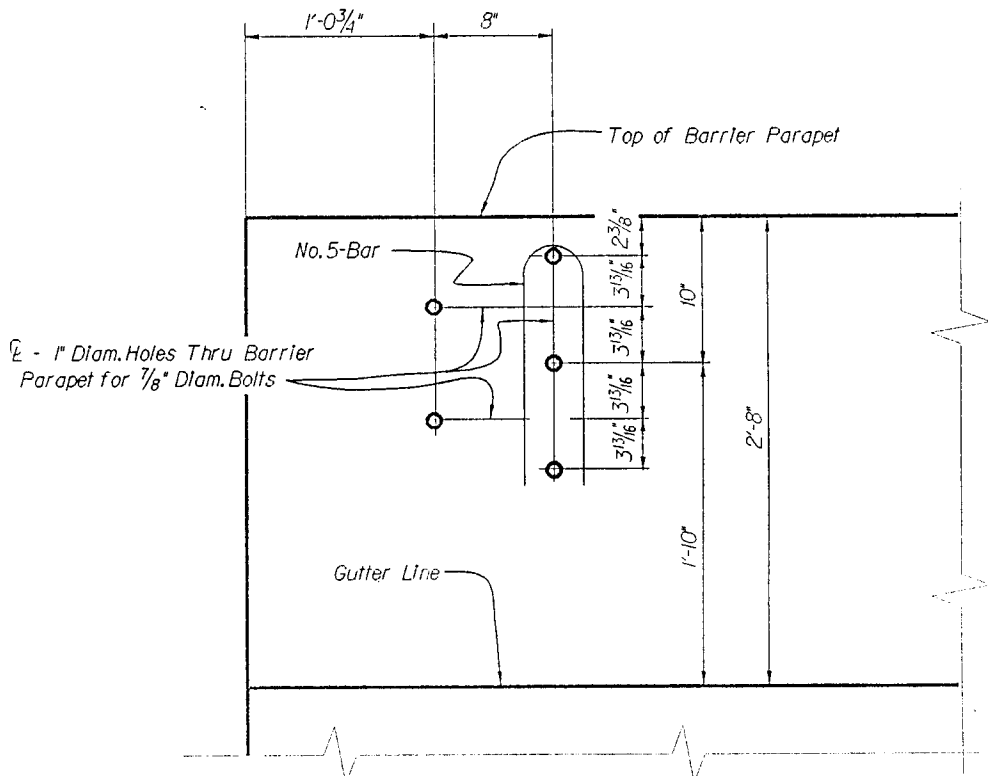
The affected Road Standard Drawings will be revised and are scheduled for disbursement this fall.

  
Rocque L. Kneece  
Bridge Design Engineer

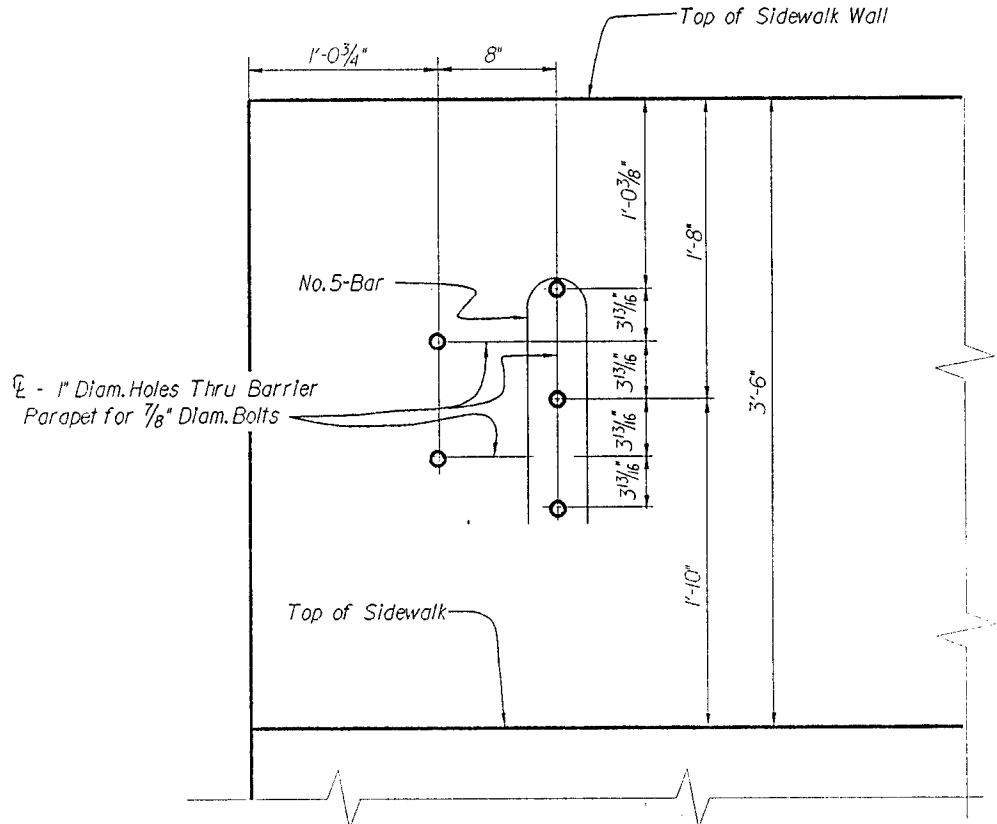
Attachment

cc: Assistant Bridge Design Engineers

REL/slb



THREE BEAM GUARD RAIL ATTACHMENT TO PARAPET



THREE BEAM GUARD RAIL ATTACHMENT TO SIDEWALK WALL



South Carolina  
Department of Transportation

955 Park Street  
Post Office Box 191  
Columbia, South Carolina 29202-0191

Office of the Director  
(803) 737-1302 • Fax (803) 737-2038

Deputy Director of Engineering  
(803) 737-1314 • Fax (803) 737-2038

Deputy Director of Finance and Administration  
(803) 737-1240 • Fax (803) 737-1719

Deputy Director of Mass Transit  
(803) 737-9720 • Fax (803) 737-9739

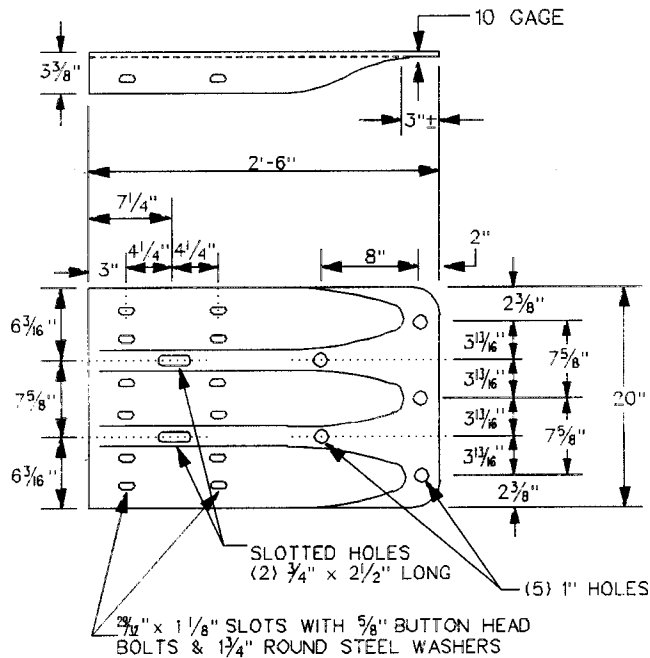
June 17, 1996

**MEMORANDUM TO: BRIDGE DESIGN ENGINEER KNEECE**

**SUBJECT: Standard Drawings for Guardrail**

It has been brought to our attention that the present dimensioning shown on Standard Drawing No. 805-7, 805-9, & 805-9A for the Thrie Beam Terminal Connector pattern does not correspond with the (AASHTO-AGC-ARTBA) Task Force No. 13 Manual. Below is the revised drawing. The new dimensions will appear in our revisions scheduled for disbursement by this fall.

**TERMINAL CONNECTOR**



E. S. Fargle  
Road Design Engineer