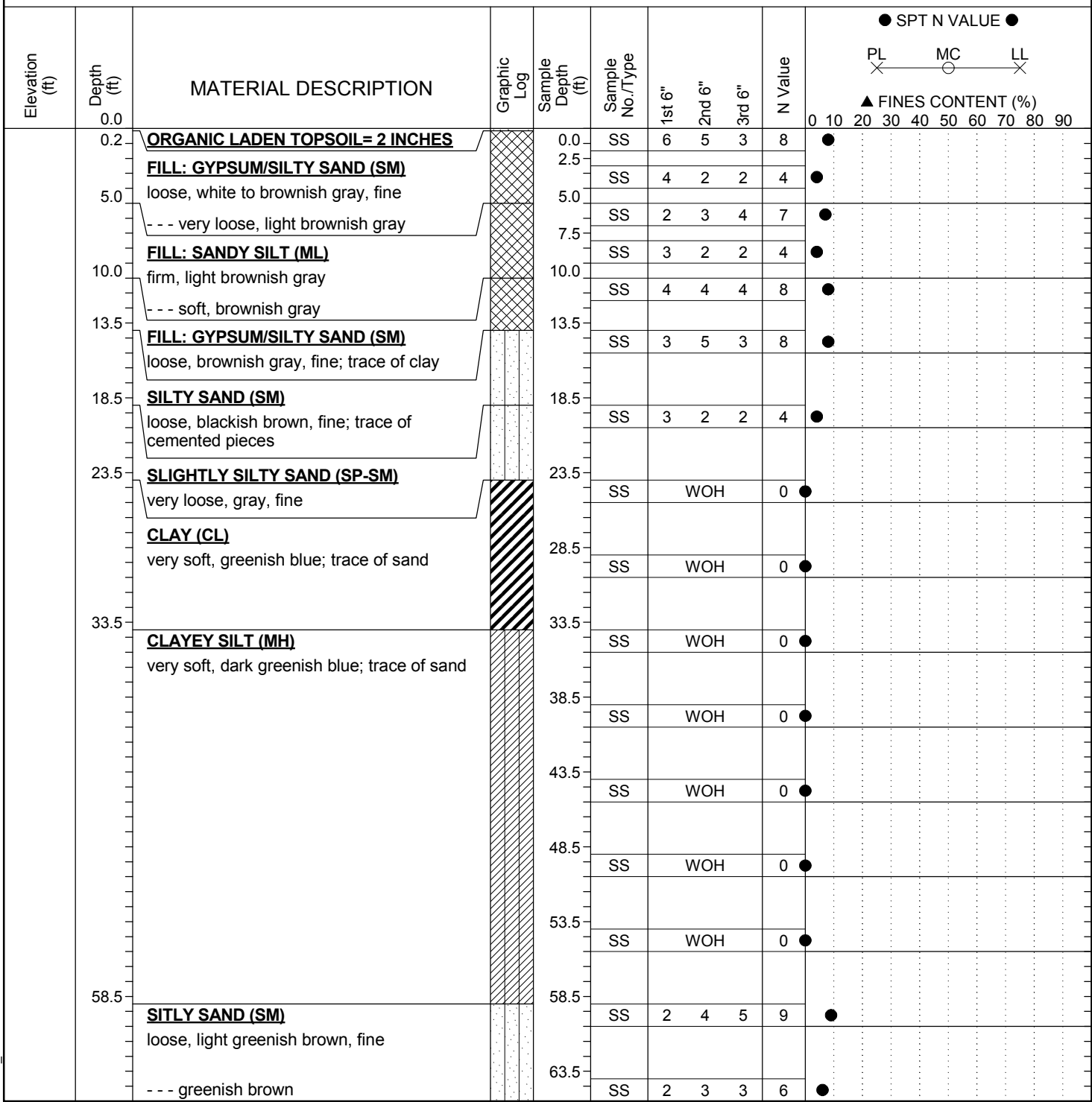


SCDOT Soil Test Boring Log

File No.:	10.224B	Project No. (PIN):	1131-08-554	County:	CHARLESTON	Eng./Geo.:	R. BOLLER
Site Description:		PORT ACCESS ROAD				Route:	
Boring No.:	B-09 SPT	Boring Location:		Offset:		Alignment:	
Elev.:	ft	Latitude:	32.83453	Longitude:	79.960182	Date Started:	7/28/09
Total Depth:	120 ft	Soil Depth:	ft	Core Depth:	ft	Date Completed:	7/28/2009
Bore Hole Diameter (in):		Sampler Configuration		Liner Required:	Y (N)	Liner Used: Y (N)	
Drill Machine:	D-50	Drill Method:	MUD ROTARY	Hammer Type:	Automatic	Energy Ratio: 60%	
Core Size:		Driller:	S&ME	Groundwater:	TOB	24HR	N/A



LEGEND

SAMPLER TYPE		DRILLING METHOD	
SS - Split Spoon	NQ - Rock Core, 1-7/8"	HSA - Hollow Stem Auger	RW - Rotary Wash
ST - Shelby Tube	CU - Cuttings	CFA - Continuous Flight Augers	RC - Rock Core
AWG - Rock Core, 1-1/8"	CT - Continuous Tube	DC - Driving Casing	

Continued Next Page

SCDOT Soil Test Boring Log

File No.:	10.224B	Project No. (PIN):	1131-08-554	County:	CHARLESTON	Eng./Geo.:	R. BOLLER
Site Description:		PORT ACCESS ROAD				Route:	
Boring No.:	B-09 SPT	Boring Location:		Offset:		Alignment:	
Elev.:	ft	Latitude:	32.83453	Longitude:	79.960182	Date Started:	7/28/09
Total Depth:	120 ft	Soil Depth:	ft	Core Depth:	ft	Date Completed:	7/28/2009
Bore Hole Diameter (in):		Sampler Configuration		Liner Required:	Y (N)	Liner Used:	Y (N)
Drill Machine:	D-50	Drill Method:	MUD ROTARY	Hammer Type:	Automatic	Energy Ratio:	60%
Core Size:		Driller:	S&ME	Groundwater:	TOB	24HR	N/A

Elevation (ft)	Depth (ft)	MATERIAL DESCRIPTION	Graphic Log	Sample Depth (ft)	Sample No./Type	1st 6"	2nd 6"	3rd 6"	N Value	SPT N VALUE ●										
										PL	MC	LL								
										▲ FINES CONTENT (%)										
										0	10	20	30	40	50	60	70	80	90	
	68.5	MARL: SANDY SILT (ML) firm, olive green, fine, moist		68.5	SS	2	4	3	7	●										
		--- calcareous		73.5	SS	4	4	4	8	●										
		--- soft		78.5	SS	2	2	2	4	●										
		--- firm		83.5	SS	3	3	4	7	●										
		--- stiff		88.5	SS	3	4	5	9	●										
		--- firm		93.5	SS	3	3	4	7	●										
		--- stiff		98.5	SS	3	4	5	9	●										
		--- firm		103.5	SS	3	4	4	8	●										
		--- stiff		108.5	SS	3	4	4	8	●										
		--- very hard; with large pieces of phosphate		113.5	SS	5	50+		50		●									
	120.0	--- firm		118.5	SS	3	2	3	5	●										
		BORING TERMINATED AT 120 FEET.																		

LEGEND

SAMPLER TYPE		DRILLING METHOD	
SS - Split Spoon	NQ - Rock Core, 1-7/8"	HSA - Hollow Stem Auger	RW - Rotary Wash
ST - Shelby Tube	CU - Cuttings	CFA - Continuous Flight Augers	RC - Rock Core
AWG - Rock Core, 1-1/8"	CT - Continuous Tube	DC - Driving Casing	

SC_DOT_08554.GPJ SC_DOT.GDT 7/21/15