



South Carolina  
Department of Transportation

March 19, 2012

**INSTRUCTIONAL BULLETIN NO. 2012-1**

**SUBJECT:** Right of Way on Cross Sections

**EFFECTIVE DATE:** August 2012 Letting

**SUPERSEDES:** None

**RE:** Geopak Criteria to Place Right of Way on Cross Sections (attached)

Beginning with the August 2012 letting, roadway design plans must include labels for present and new right of way on the cross sections. In order to streamline this process in the most efficient manner, the Design Automation Office has created the attached procedure, *Geopak Criteria to Place Right of Way on Cross Sections*. This procedure provides instructions for creating the new run within Geopak that will automate the placement of the labels. The designer must run the procedure in order to accurately produce the labels on the cross sections. When changes or revisions are made to the right of way, the designer must run the procedure again to update the placement of the labels on the cross-sections.



James W. Kendall, Jr.  
Preconstruction Support Engineer

GRB

Attachment

ec:

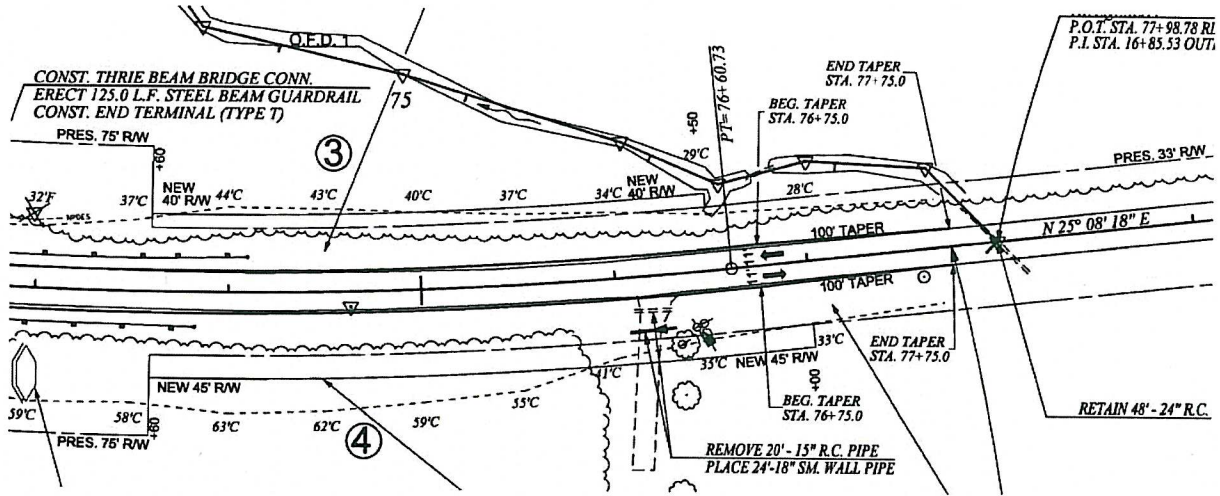
Mitchell Metts, Director of Preconstruction  
Leland Colvin, Director of Construction  
Tony Sheppard, Director of Traffic Engineering  
Brian Keys, Asst. Chief Engineer for P, L, & D

Matt Lifsey, RP Engineer – Lowcountry  
Mike Barbee, RP Engineer – Pee Dee  
Randall Young, RP Engineer - Midlands  
Tony Fallaw, RP Engineer - Upstate



## Geopak Criteria to Place Right of Way on Cross Sections

In the \*pp design file, draft and verify the existing and proposed new right of way lines on the appropriate levels, **RD\_EX\_RW** and **RD\_PD\_RW**.



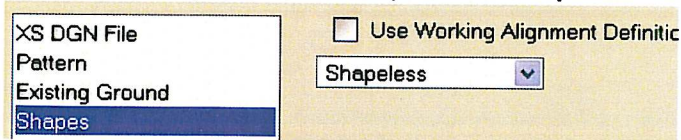
Open the \*dx design file. Open the Project Manger file and select the **Proposed Cross Sections** button.

Select **Run > New** and enter a new run name press OK to continue. Highlight the newly created run and press the OK button.

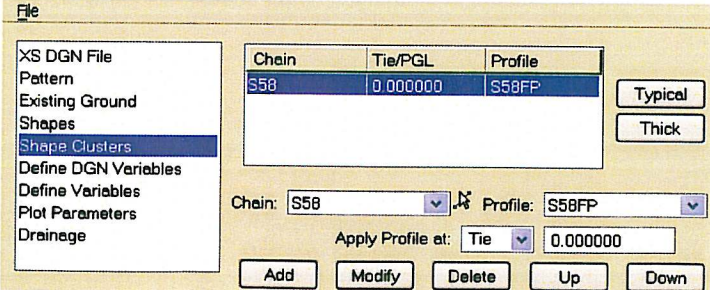
On the XS DGN File option, select the \*dx design file that you are currently in.

On the Pattern and Existing Ground options, select the Use Working Alignment Definition if defined. (Manually set them if they are not defined.)

On the Shapes option, set the drop down to **Shapeless**.

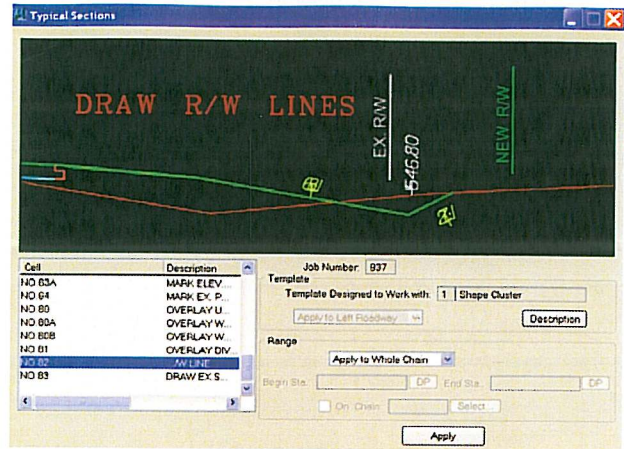
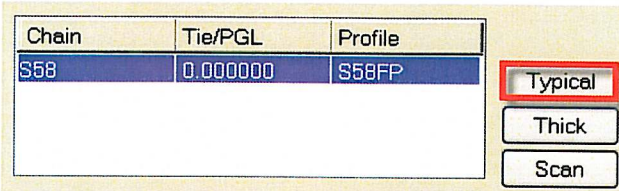


On the Shape Clusters option, select the Chain and Profile and press the Add button.

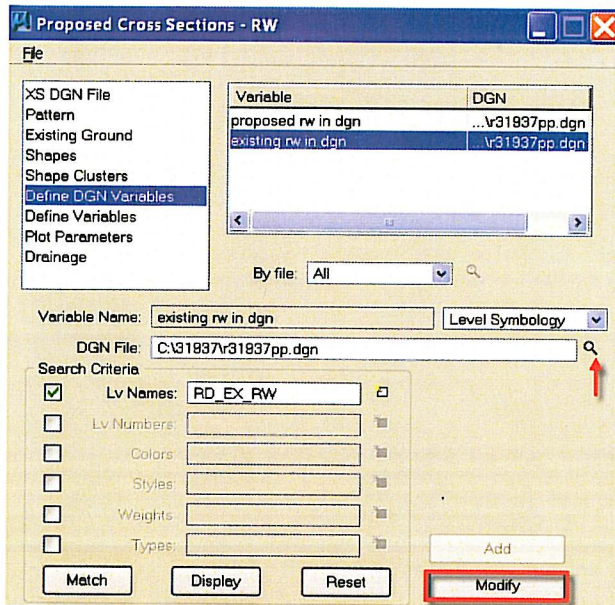




With the Chain highlighted at the top, press the **Typical** button. Scroll down and select template **No. 82 Draw R.W. Shapeless** and press the **Apply** button.

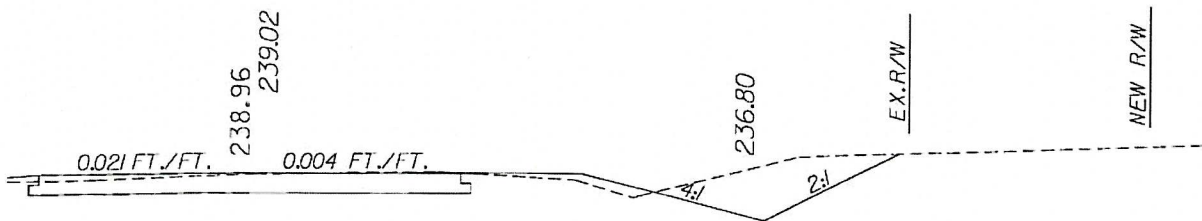


On the Define DGN Variables option, highlight the proposed rw in dgn line item. At the bottom, **select** the \*pp design file and press the **Modify** button to accept. Highlight the existing rw in dgn line item and at the bottom, **select** the \*pp design file and press the **Modify** button to accept.



On the Plot Parameters option, turn off all of the checks. Select **File > Save Settings** and then select **File > Run** to process the right of way on cross sections.

**Verify** the stationing and the existing/proposed right of way lines on the cross sections for distance and location versus the drafted lines in the \*pp design file. Verify the newly placed text in the \*fx design file.





DATE	BY	REVISION
3	SC	CHESTERFIELD
13.13.18	FILE	RD. S-58 (RAYFIELD BRIDGE ROAD)
5-59	6	

ALIGNMENT CONTROL CAN BE FOUND ON REFERENCE SHEET

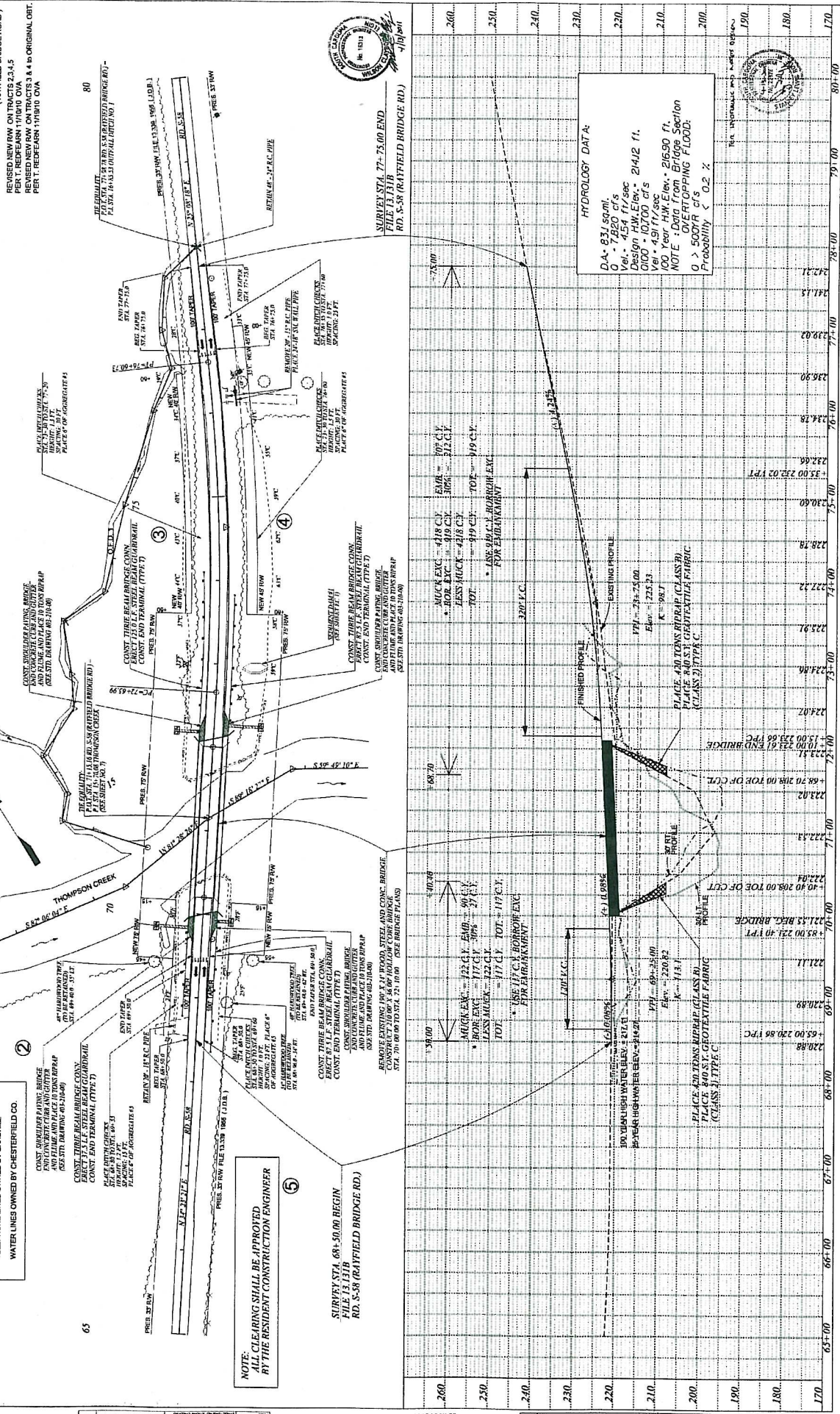
UTILITY NOTE  
POWER POLES OWNED BY LYNCHES RIVER  
TELEPHONE LINES OWNED BY SANDHILL  
WATER LINES OWNED BY CHESTERFIELD CO.

CONST. SHOULDERS PAVING BRIDGE AND FLOWLINE AND PLACE 10" ASPHALT AND 6" CONC. (SEE STD. DRAWING 60-210-40)

CONST. THREE BEAM BRIDGE CONY. EXACT 17.5' S.P. STEEL BEAM GUARDRAIL. CONST. END TERMINAL (TYPE 7)

CONST. THREE BEAM BRIDGE CONY. EXACT 17.5' S.P. STEEL BEAM GUARDRAIL. CONST. END TERMINAL (TYPE 7)

CONST. THREE BEAM BRIDGE CONY. EXACT 17.5' S.P. STEEL BEAM GUARDRAIL. CONST. END TERMINAL (TYPE 7)



NOTE: ALL CLEARING SHALL BE APPROVED BY THE RESIDENT CONSTRUCTION ENGINEER

SURVEY STA. 68+50.00 BEGIN FILE 13.1318 RD. S-58 (RAYFIELD BRIDGE RD.)

SURVEY STA. 77+75.00 END FILE 13.1318 RD. S-58 (RAYFIELD BRIDGE RD.)

HYDROLOGY DATA:  
D.A. - 831 sq mi  
Q - 7,820 cfs  
Vel. - 4.54 ft/sec  
Design HW Elev. - 214.12 ft.  
VICO - 107,000 cfs  
VICO - 49,000 cfs  
100 Year HW Elev. - 216.90 ft.  
NOTE: Data from Bridge Section  
OVERTOPPING FLOOD:  
Q > 5000 cfs  
Probability < 0.2 %

300 YARD HIGH WATER BLEV. ± 217.4  
5-YEAR HIGH WATER BLEV. ± 216.2

PLACE 40 TONS RIPRAP (CLASS B)  
PLACE 80 ST. GEOTEXTILE FABRIC (CLASS 2) TYPE C

PLACE 430 TONS RIPRAP (CLASS B)  
PLACE 840 ST. GEOTEXTILE FABRIC (CLASS 2) TYPE C

PLACE 430 TONS RIPRAP (CLASS B)  
PLACE 840 ST. GEOTEXTILE FABRIC (CLASS 2) TYPE C

PLACE 430 TONS RIPRAP (CLASS B)  
PLACE 840 ST. GEOTEXTILE FABRIC (CLASS 2) TYPE C

PLACE 430 TONS RIPRAP (CLASS B)  
PLACE 840 ST. GEOTEXTILE FABRIC (CLASS 2) TYPE C

PLACE 430 TONS RIPRAP (CLASS B)  
PLACE 840 ST. GEOTEXTILE FABRIC (CLASS 2) TYPE C

PLACE 430 TONS RIPRAP (CLASS B)  
PLACE 840 ST. GEOTEXTILE FABRIC (CLASS 2) TYPE C

PLACE 430 TONS RIPRAP (CLASS B)  
PLACE 840 ST. GEOTEXTILE FABRIC (CLASS 2) TYPE C

PLACE 430 TONS RIPRAP (CLASS B)  
PLACE 840 ST. GEOTEXTILE FABRIC (CLASS 2) TYPE C

PLACE 430 TONS RIPRAP (CLASS B)  
PLACE 840 ST. GEOTEXTILE FABRIC (CLASS 2) TYPE C

PLACE 430 TONS RIPRAP (CLASS B)  
PLACE 840 ST. GEOTEXTILE FABRIC (CLASS 2) TYPE C

PLACE 430 TONS RIPRAP (CLASS B)  
PLACE 840 ST. GEOTEXTILE FABRIC (CLASS 2) TYPE C

PLACE 430 TONS RIPRAP (CLASS B)  
PLACE 840 ST. GEOTEXTILE FABRIC (CLASS 2) TYPE C

PLACE 430 TONS RIPRAP (CLASS B)  
PLACE 840 ST. GEOTEXTILE FABRIC (CLASS 2) TYPE C

PLACE 430 TONS RIPRAP (CLASS B)  
PLACE 840 ST. GEOTEXTILE FABRIC (CLASS 2) TYPE C

PLACE 430 TONS RIPRAP (CLASS B)  
PLACE 840 ST. GEOTEXTILE FABRIC (CLASS 2) TYPE C

PLACE 430 TONS RIPRAP (CLASS B)  
PLACE 840 ST. GEOTEXTILE FABRIC (CLASS 2) TYPE C

PLACE 430 TONS RIPRAP (CLASS B)  
PLACE 840 ST. GEOTEXTILE FABRIC (CLASS 2) TYPE C

PLACE 430 TONS RIPRAP (CLASS B)  
PLACE 840 ST. GEOTEXTILE FABRIC (CLASS 2) TYPE C

PLACE 430 TONS RIPRAP (CLASS B)  
PLACE 840 ST. GEOTEXTILE FABRIC (CLASS 2) TYPE C

PLACE 430 TONS RIPRAP (CLASS B)  
PLACE 840 ST. GEOTEXTILE FABRIC (CLASS 2) TYPE C

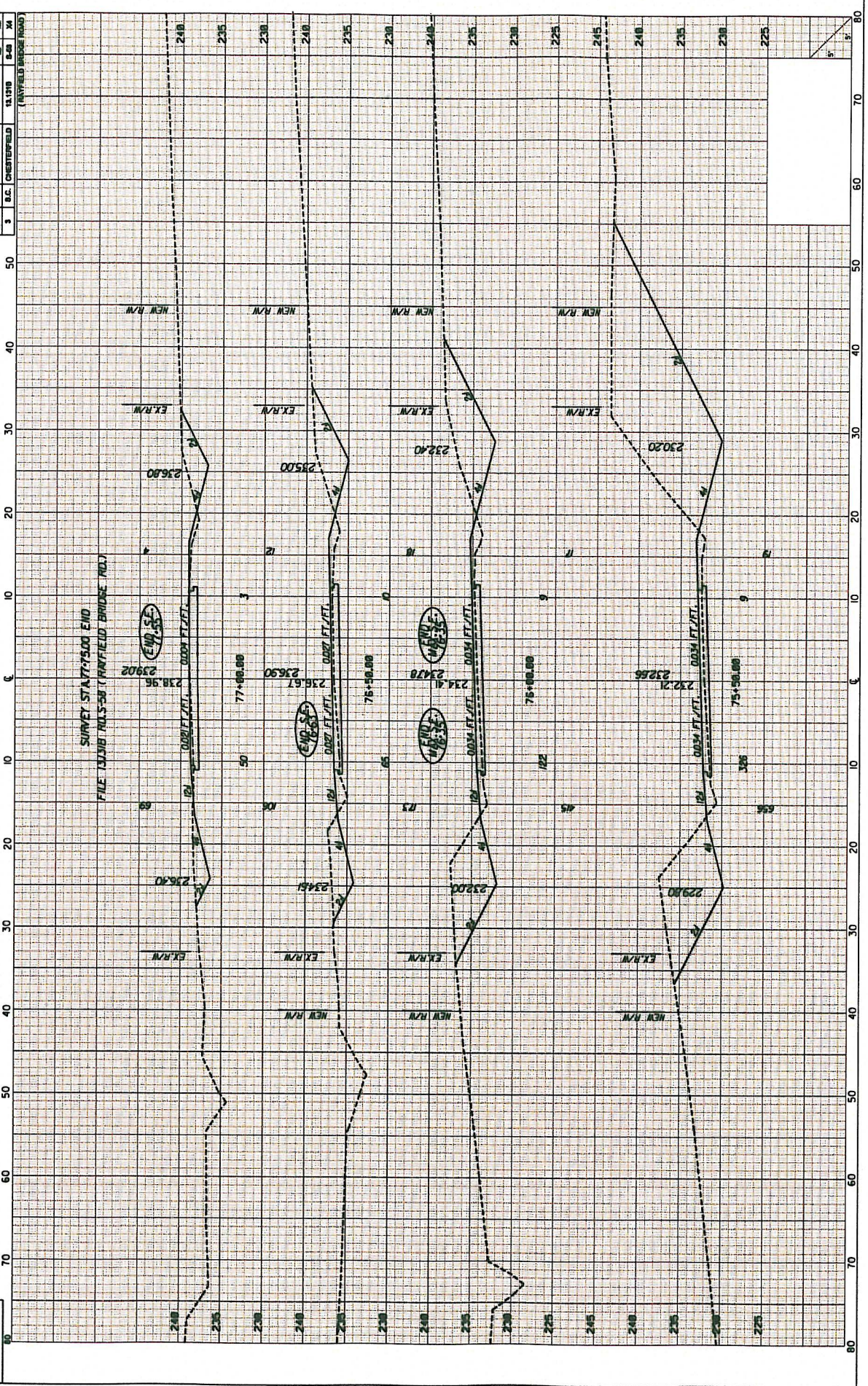
PLACE 430 TONS RIPRAP (CLASS B)  
PLACE 840 ST. GEOTEXTILE FABRIC (CLASS 2) TYPE C

PLACE 430 TONS RIPRAP (CLASS B)  
PLACE 840 ST. GEOTEXTILE FABRIC (CLASS 2) TYPE C





FILE NO. 13.1318  
 COUNTY CHESTERFIELD  
 SHEET 3 OF 3  
 PROJECT (RAVINEFIELD BRIDGE ROAD)



North  
 No. 11  
 C:\31317\058fx.dgn  
 06-FEB-2012