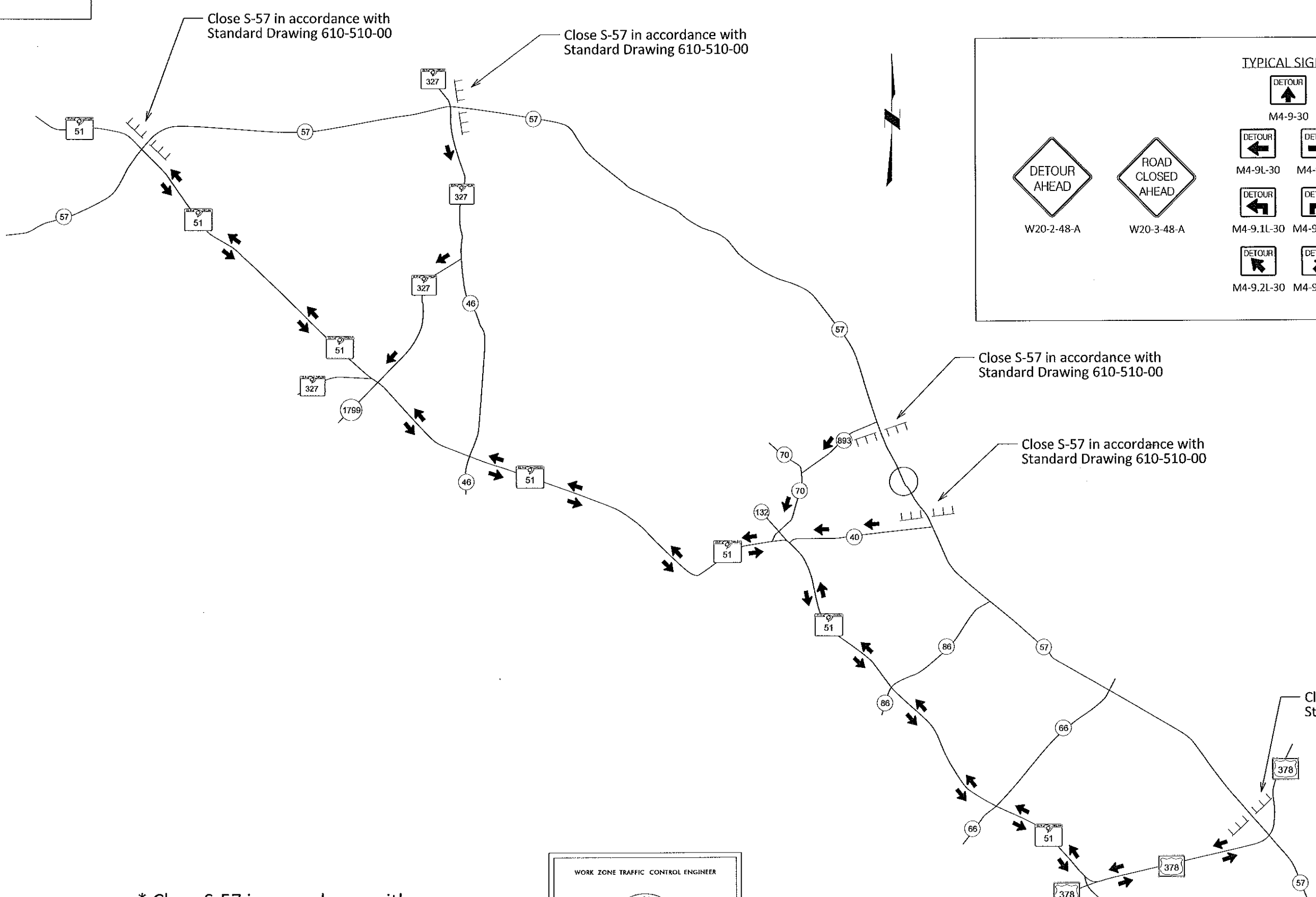


FED. RD. DIST. NO.	STATE	COUNTY	PROJECT ID	ROUTE NO.	SHEET NO.
3	S.C.	FLORENCE		S-57	TC 1



TYPICAL SIGNS

W20-2-48-A

W20-3-48-A

M4-9-30

M4-10L-48

M4-10R-48

R11-2-48

R11-3a-60-XX

R11-4-60

* Close S-57 in accordance with Standard Drawing 610-510-00 and detour its traffic in accordance with Drawing 610-610-00 .

WORK ZONE TRAFFIC CONTROL ENGINEER

FOR / CONSTRUCTION *Willie E. McConnell*
DATE 11/12/15

SOUTH CAROLINA DEPARTMENT OF TRANSPORTATION
TRAFFIC ENGINEERING - COLUMBIA, S.C.

S-57 (CLAUSSEN ROAD / OLD RIVER ROAD)
DETOUR ROUTE

SCALE 1" = NTS RTE. S-57 DWG. NO. TC 1

s5user\$
 s5s5s5o5t5i5n5s5s5s5f5i5l5e5n5a5m5e5s5s5s5s5
 s5s5d5o5t5e5s5s5