

INDEX OF SHEETS

- 1 TITLE SHEET
- 1-A MOVING ITEMS
- 2-2A TYPICAL SECTION OF IMPROVEMENTS
- 3 ENDWALLS FOR PIPE CULVERTS
- 4 SUPERELEVATION STANDARD
- 5 STANDARD DESIGN FOR DROP INLET
- 6 FEDERAL AID MARKERS
- 7-21 PLAN & PROFILE STA. 708+50 TO STA. 1130+39.0
- 22 QUADRUPLE 12'X11'X30' R.C. BOX CULVERT STA. 810+70
- 23 DOUBLE 6'X6'X34' R.C. BOX CULVERT STA. 889+63
- 24 QUADRUPLE 10'X8'X30' R.C. BOX CULVERT STA. 958+40
- 25 DOUBLE 8'X8'X30' R.C. BOX CULVERT STA. 1028+00
- 26-71 CROSS-SECTIONS STA. 708+50 TO STA. 1130+39.0

SOUTH CAROLINA STATE HIGHWAY DEPARTMENT COLUMBIA

PLAN AND PROFILE OF PROPOSED STATE HIGHWAY

FED. AID PROJ. NO. S-95 (2)

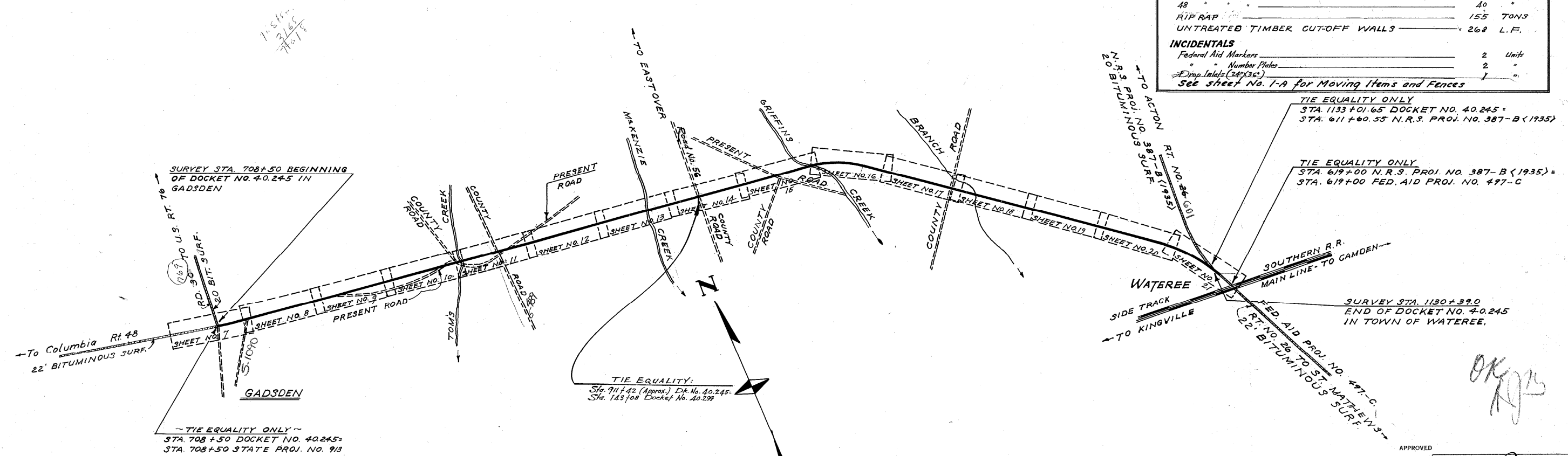
DOCKET NO. 40.245

ROUTE NO. 48

RICHLAND COUNTY

FROM GADSDEN TO WATEREE

SCALES: PLAN AND PROFILE 1 INCH = 100 FEET HORIZONTAL: 1 INCH = 10 FEET VERTICAL



SUMMARY OF ESTIMATED QUANTITIES							
FED. ROAD DIV. NO.	STATE	COUNTY	DOCKET NO.	PROJECT NO.	ROUTE NO.	SHEET NO.	TOTAL SHEETS
3	S. C.	Richland	40.245	FA-95(2)	48	1	71

EARTHWORK	
Clearing & Grubbing within Roadway	Necessary
Clearing & Grubbing of Borrow and Material Pits	3 Acres
Common Excavation	110,837 Cu. Yds.
Overhaul	102,243 C.Y.H.M.
Selected Material for Shoulders	7,188 Cu. Yds.
BASE COURSE	
Earth Type Base Course (Pit Material)	28,195 Cu. Yds.
Scarifying, Mixing, Remixing, Shaping and Reshaping	101,441 M.S.Y.
Additional Scarifying, Mixing, Remixing, Shaping and Reshaping	34,000 M.S.Y.
SURFACING	
Bituminous Surfacing (Inverted Penetration with Seal)	96,753 S.Y.
STRUCTURES	
Class "A" Concrete	4,88.19 C.Y.
Reinforcing Steel	56,204 Lbs.
15" Reinf. Conc. Pipe	680 L.F.
18 " " "	500 "
24 " " "	196 "
30 " " "	240 "
36 " " "	120 "
42 " " "	92 "
48 " " "	40 "
RIP RAP	155 TONS
UNTREATED TIMBER CUT-OFF WALLS	268 L.F.
INCIDENTALS	
Federal Aid Markers	2 Units
" " Number Plates	2 "
Drop Inlets (24"x36")	1 "
See sheet No. 1-A for Moving Items and Fences	

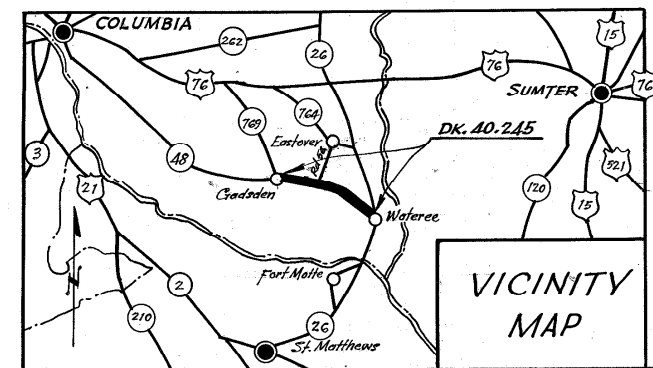
CONVENTIONAL SIGNS	
State Line	Trolley Poles
County Line	Power Poles
City or Town Limits	Telephone or Telegraph Poles
Property Line	Marsh
Fence	Trees
Retaining Wall	Brush
Existing Road	Stumps
Proposed Road	Buildings
Railroad	Bridge
Levee or Embankment	Concrete Box Culvert
Guard Rail	Pipe Culvert
Point of Intersection (P. I.)	Drop Inlet and Culvert
	Hub on Center Line

LEGEND	
PROPOSED PROJECT	
OTHER ROADS	

Net Length of Roadway	7.972	Miles
Net Length of Bridges	0.018	Miles
Net Length of Project	7.990	Miles
Length of Exceptions	0.000	Miles
Gross Length of Project	7.990	Miles

Equalities in Stationing
None

Note: All workmanship and material on this project to conform with South Carolina State Highway Department Standard Specifications for Highway Construction dated March 15th 1939, as approved by the Administrator, Federal Works Agency.



APPROVED

STATE HIGHWAY ENGINEER
8/20/47

RECOMMENDED FOR APPROVAL

DISTRICT ENGINEER
PUBLIC ROADS ADMINISTRATION
FEDERAL WORKS AGENCY

APPROVED

COMMISSIONER
PUBLIC ROADS ADMINISTRATION
FEDERAL WORKS AGENCY

PLAN	SURVEYED	DATE
NOTE BOOK	PLOTTED	
ALIGNED	CHECKED	
BY	DATE	

PROFILE	GRADES	DATE
NOTE BOOK	CHECKED	
BY	DATE	

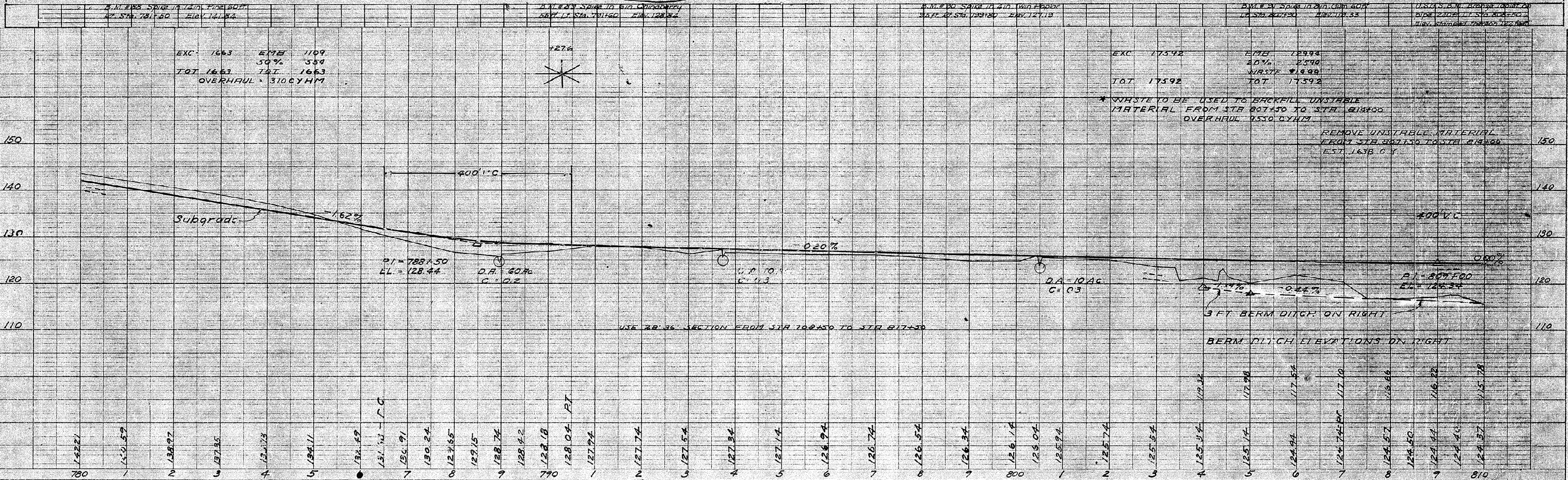
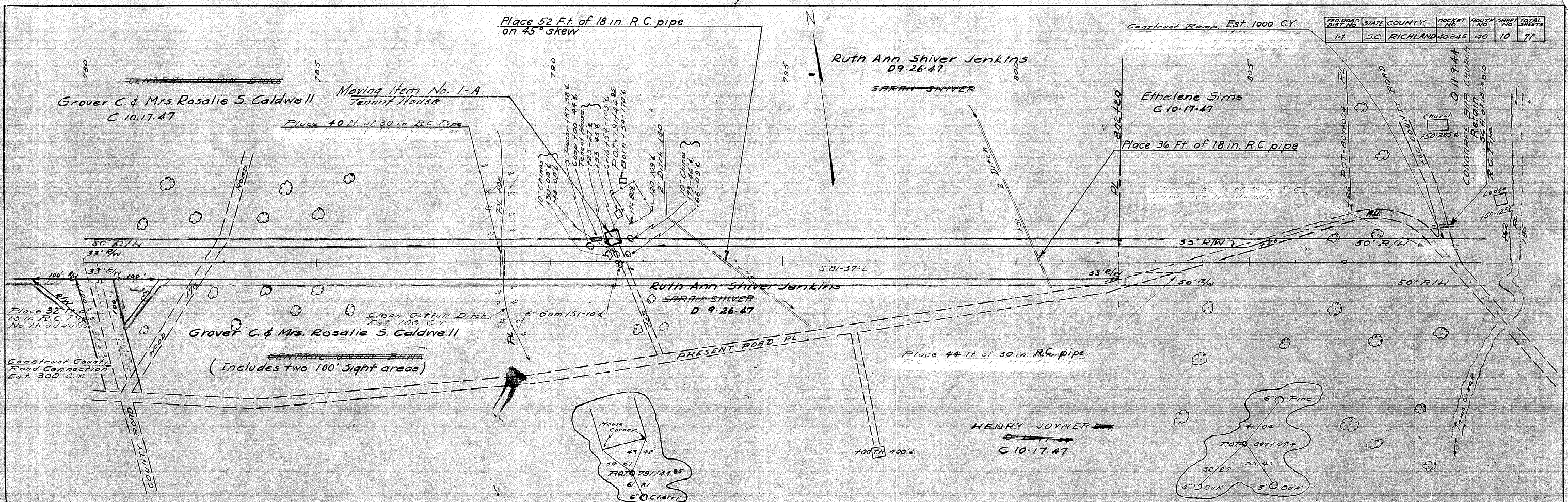


PLATE 1 - PLAN - PROFILE OF R.A. STANDARD CHARLES BRUNNEN CO. INC. NEW YORK

PLAN
DATE
BY
CHECKED
NOTED
APPROVED

PROFILE
DATE
BY
CHECKED
NOTED
APPROVED

RD. NO.	STATE	COUNTY	DOCKET NO.	POST MILE	SHEET NO.	TOTAL SHEETS
14	S.C.	KIRCHLAND	40.245	45	11	71

