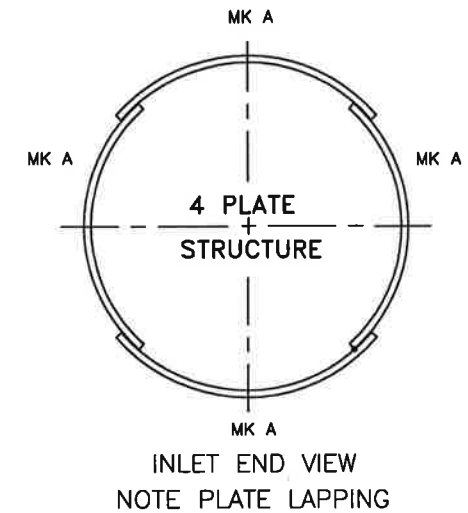
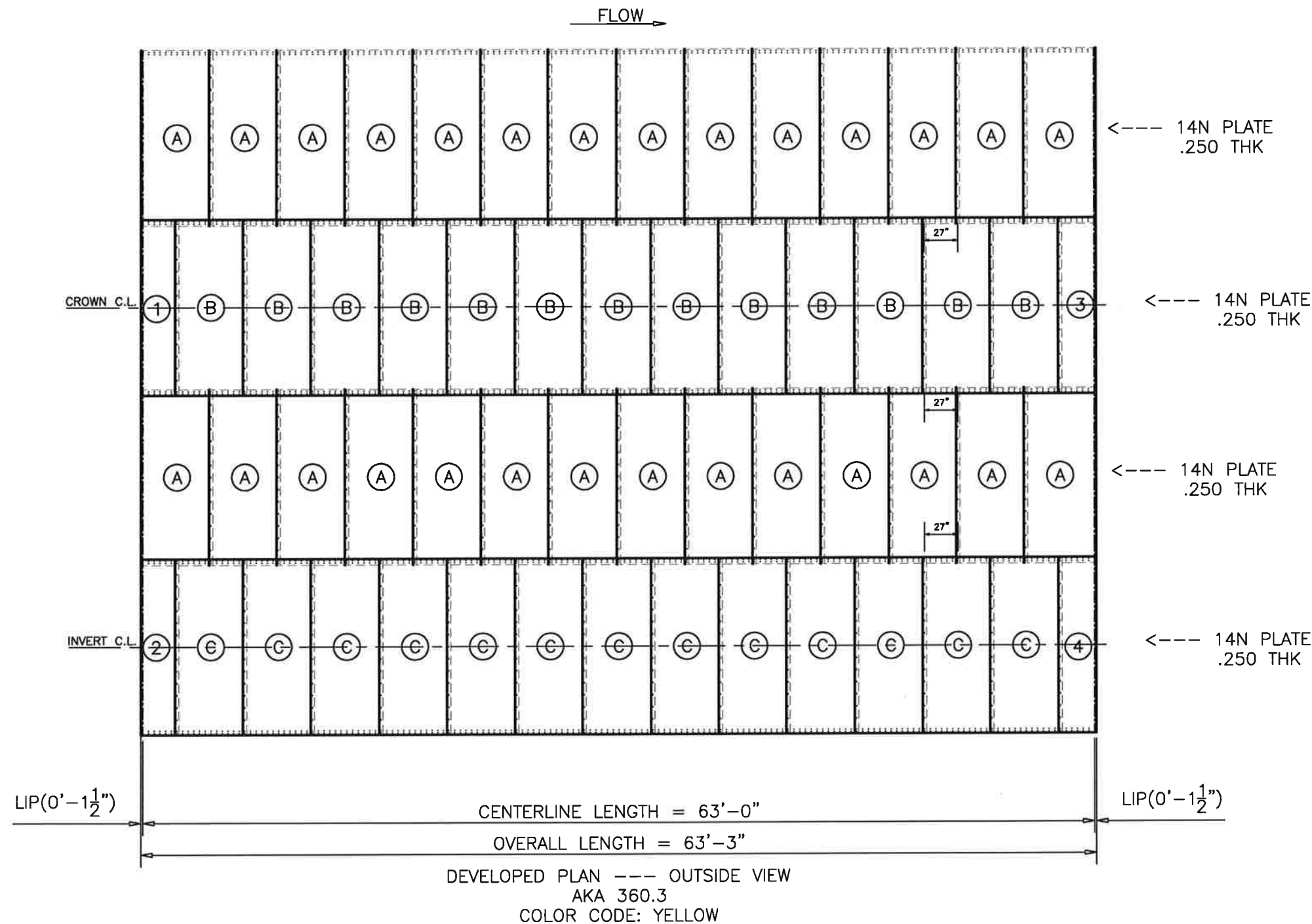


I:\LOCATIONS\WINCHESTER\SYSTEM DATA\MP DRAWINGS\ALUMINUM\STRUCTURAL\PLATE\ROUND\530801-020-AL-FAB-A.DWG 10/15/2015 10:22 AM



IMPORTANT
ASSEMBLY INSTRUCTIONS WILL BE SHIPPED WITH THE STRUCTURE. THEY ARE LOCATED IN THE BRIGHTLY COLORED BOLT KEG.

- GENERAL NOTES:**
- Confirmation of cover - This structure is within the minimum and maximum allowable height of cover, for the designated loading, as follows:
Loading: HS-20 or _____, Minimum cover (FT) 5, Maximum cover (FT) 22
 - For proper bolt size usage, refer to following:

Plate only	2 plate lap	3 plate lap	4 plate lap
0.100" - 0.125" thk. plate	1-1/4"	1-1/4"	1-1/4"
0.150" - 0.200" thk. plate	1-1/4"	1-1/2"	2"
0.225" - 0.250" thk. plate	1-1/2"	2"	N/A

With Reinforcing Rib (if req'd) 1 plate

0.100" - 0.175" thk. plate	1-1/4"	1-1/2"	2"
0.200" - 0.250" thk. plate	1-1/2"	2"	2"

*Occurs with full inverts only which have 0.100" thick plates.
 - Nuts may be located on structure's interior or exterior to allow conventional access during assembly and torquing. Only one side of nut has a curved surface and it should be in direct contact with plate mated.
 - All plate laps and reinforcing ribs must be properly mated in a tangent fashion using proper alignment techniques and held in alignment by fasteners (finger tightened only). Before backfilling commences, all fasteners must be torqued for adequate component contact. Good component fit is better than high torque.
 - Fastener torque requirements: 0.100" thick plate at 90-115 foot-pounds. For all thicker plates and reinforcing ribs, torque at 115-135 foot-pounds. Torque levels are for installation, not residual, in-service requirements. Since torquing may loosen previously tightened fasteners, multiple passes may be necessary. When seam sealant tape is used, fasteners should be torqued again after 24 hours.
 - All aluminum structural plate material is manufactured in accordance with AASHTO M219, ASTM B746 and ASTM B864 specifications.
 - See ASSEMBLY INSTRUCTIONS shipped with material in fastener container. Also refer to specific product catalog for additional product information.

THE ASSEMBLY BOLTS AND NUTS ARE SPECIALLY DESIGNED WITH ROUNDED OR SPHERICAL THROATS FOR FITTING EITHER THE CREST OR VALLEY OF THE CORRUGATIONS, PROVIDING MAXIMUM BEARING CONTACT AREA WITH THE PLATES WITHOUT THE USE OF WASHERS. NOTE THAT THE BOLTS AND NUTS SHOULD BE INSTALLED SUCH THAT THE ROUNDED PORTION IS IN CONTACT WITH THE PLATES.

DEVELOPED PLAN --- OUTSIDE VIEW
AKA 360.3
COLOR CODE: YELLOW

SKEW	INLET	OUTLET	TYPE STRUCTURE ROUND	PLATE THICKNESS 0.250
	90	90		
BEVEL	0	0	SPAN = 14'-0"	REINFORCING RIB SPACING AS SHOWN
			RISE = 14'-0"	REINFORCING RIB TYPE AS SHOWN
			LENGTH @ C 63'-0"	NUMBER OF STRUCTURES 1

AKA 360.3

CONTECH
ENGINEERED SOLUTIONS LLC
www.ContechES.com
700 Tech Drive, Winchester, KY 40391
859-744-3339 859-744-9665 FAX

CONTECH
STRUCTURAL PLATE
CONTRACT DRAWING

CSX Transportation South Carolina Flood Repairs Columbia, SC
POMONA SUPPLY Company (PO 4135)
4311 DUNDAS DR
GREENSBORO, NC 27407

DRAWING #: 530801-020-AL-CON-A			PLANT ORDER NO. OR00309079
PROJECT No.: 530801	SEQ No.: 20	DATE: 10/15/2015	SALES ORDER NO. 563-N8N5K9
DESIGNED: ----	DRAWN: JSC		
CHECKED: ----	APPROVED: ----		
SHEET NO.: 1			OF 1