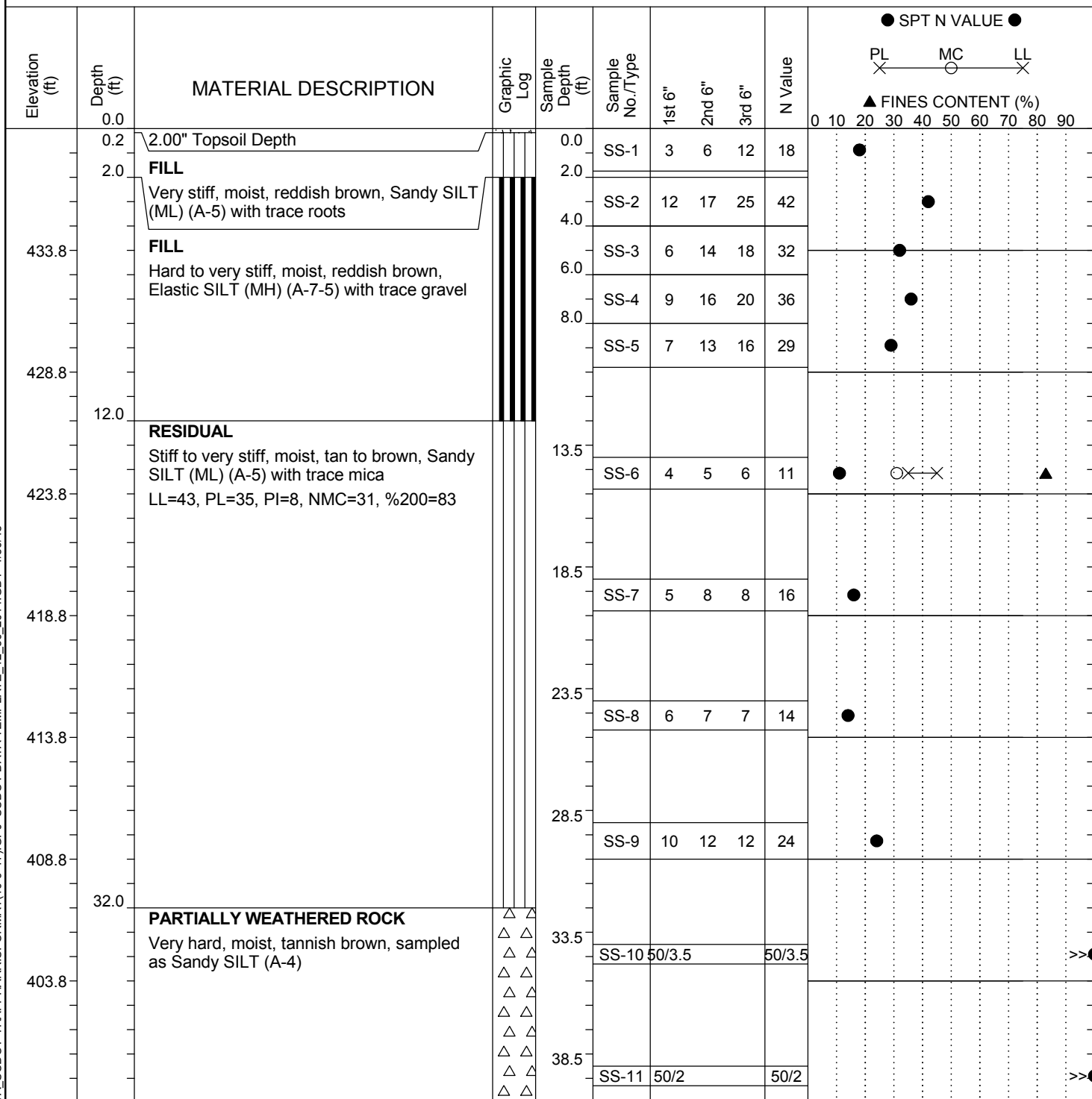


SCDOT Soil Test Log

Project ID:	029208	County:	Lexington	Boring No.:	B-12
Site Description:	I-26 WIDENING PROJECT MM85-MM101			Route:	S-49
Eng./Geo.:	M. Bailey	Boring Location:	81+13.08	Offset:	6' RT
Elev.:	438.8 ft	Latitude:	34.1920318	Longitude:	-81.3489935
Total Depth:	72 ft	Soil Depth:	50.5 ft	Core Depth:	21.5 ft
Bore Hole Diameter (in):	2.25	Sampler Configuration		Liner Required:	Y (N)
Drill Machine:	CME-550X	Drill Method:	2.25 HSA	Hammer Type:	Automatic
Core Size:	NQ	Driller:	Soil Consultants	Groundwater:	TOB GNE
				24HR	GNE



LEGEND

Continued Next Page

SAMPLER TYPE		DRILLING METHOD	
SS - Split Spoon	NQ - Rock Core, 1-7/8"	HSA - Hollow Stem Auger	RW - Rotary Wash
UD - Undisturbed Sample	CU - Cuttings	CFA - Continuous Flight Augers	RC - Rock Core
AWG - Rock Core, 1-1/8"	CT - Continuous Tube	DC - Driving Casing	