

INDEX OF SHEETS

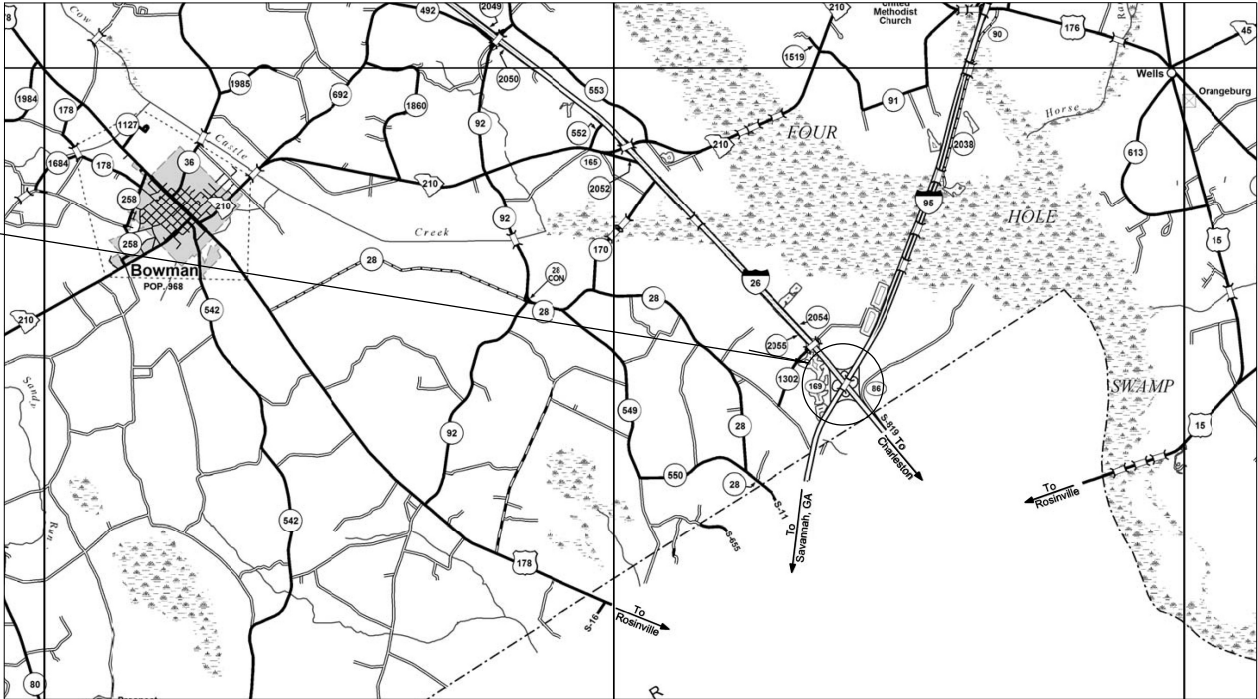
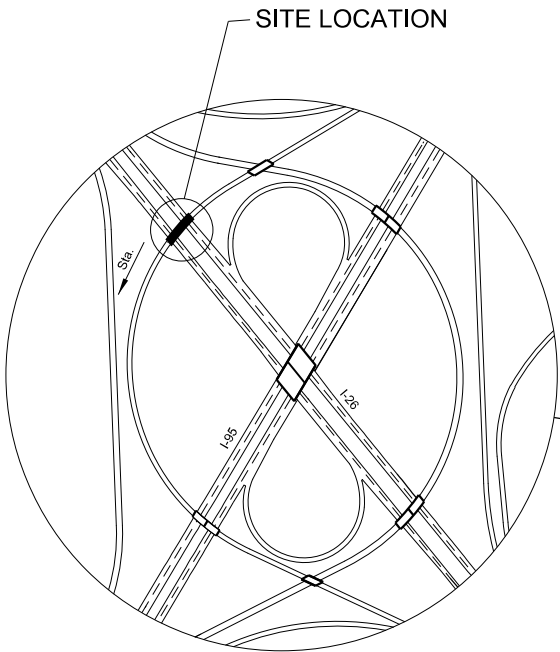
1. Title Sheet
2. Bridge Plan & Profile
3. Superstructure -Typical Section



South Carolina Department of Transportation

CONCEPTUAL PLANS
FOR
ORANGEBURG COUNTY
PROJECT ID P038677

I-26/I-95 INTERCHANGE IMPROVEMENT
CONSTRUCT OVERPASS OVER I-26
ALONG RAMP FCH2



LAYOUT



Approximate Location of Bridge is
Latitude 33°-19'-14.5" N
Longitude 80°-32'-60" W

3 DAYS BEFORE DIGGING IN
SOUTH CAROLINA
CALL 811
SOUTH CAROLINA 811 (SC811)
WWW.SC811.COM
ALL UTILITIES MAY NOT BE A MEMBER OF SC811

ASSET ID TBD

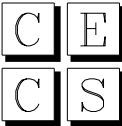
TRAFFIC DATA

ADT V.P.D.
ADT V.P.D.
TRUCKS %

NET LENGTH OF ROADWAY	0.000	MILES
NET LENGTH OF BRIDGES	0.037	MILES
NET LENGTH OF PROJECT	0.037	MILES
LENGTH OF EXCEPTIONS	0.000	MILES
GROSS LENGTH OF PROJECT	0.037	MILES

NOTE: EXCEPT AS MAY OTHERWISE BE SPECIFIED ON THE PLANS OR IN THE SPECIAL PROVISIONS, ALL MATERIALS AND WORKMANSHIP ON THIS PROJECT SHALL CONFORM TO THE SOUTH CAROLINA DEPARTMENT OF TRANSPORTATION STANDARD SPECIFICATIONS FOR HIGHWAY CONSTRUCTION (2007 EDITION) AND THE STANDARD DRAWINGS FOR ROAD CONSTRUCTION IN EFFECT AT THE TIME OF LETTING.

CONSULTING ENGINEERING FIRM



CIVIL ENGINEERING
CONSULTING SERVICES, INC.

2000 PARK STREET
SUITE 201
COLUMBIA, S.C. 29201

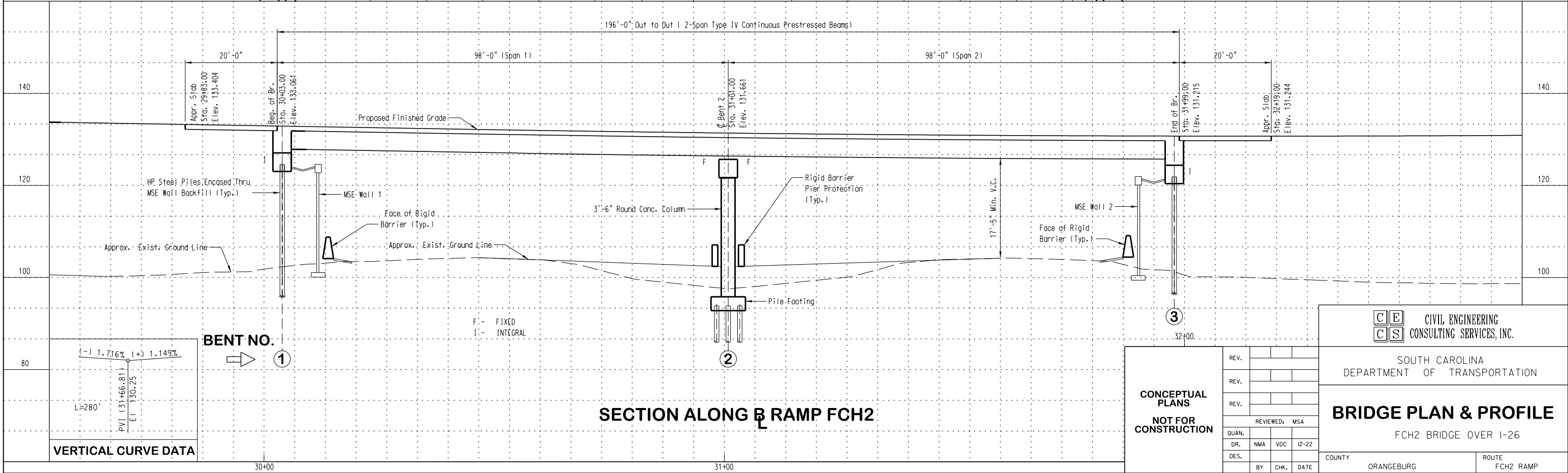
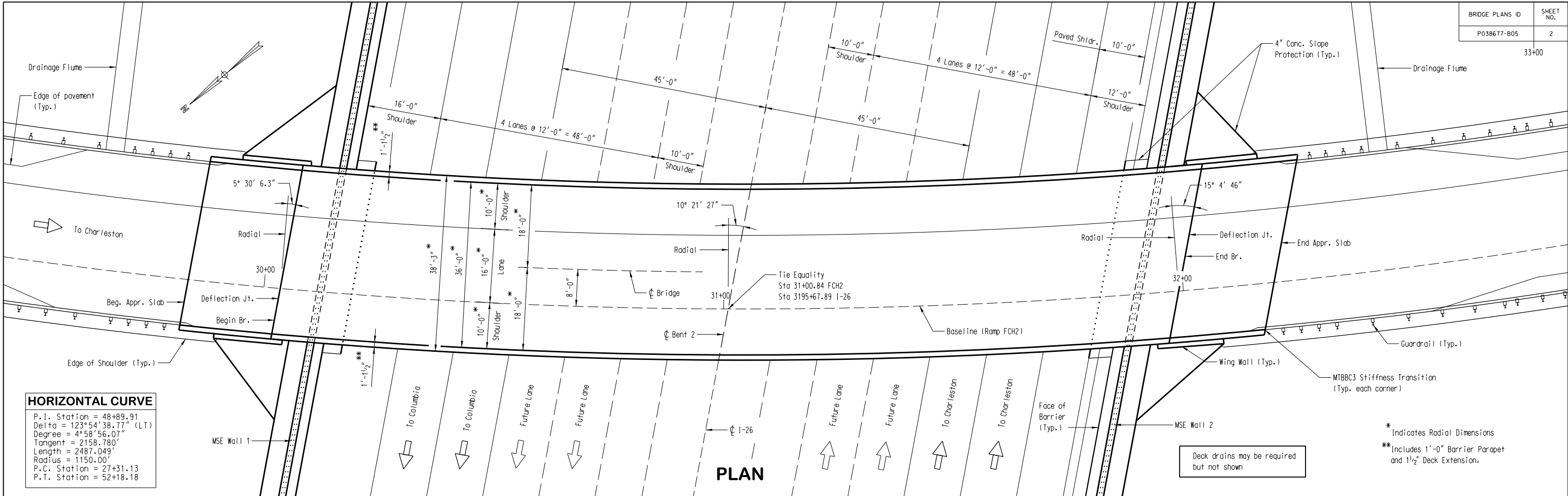
ENGINEER OF RECORD

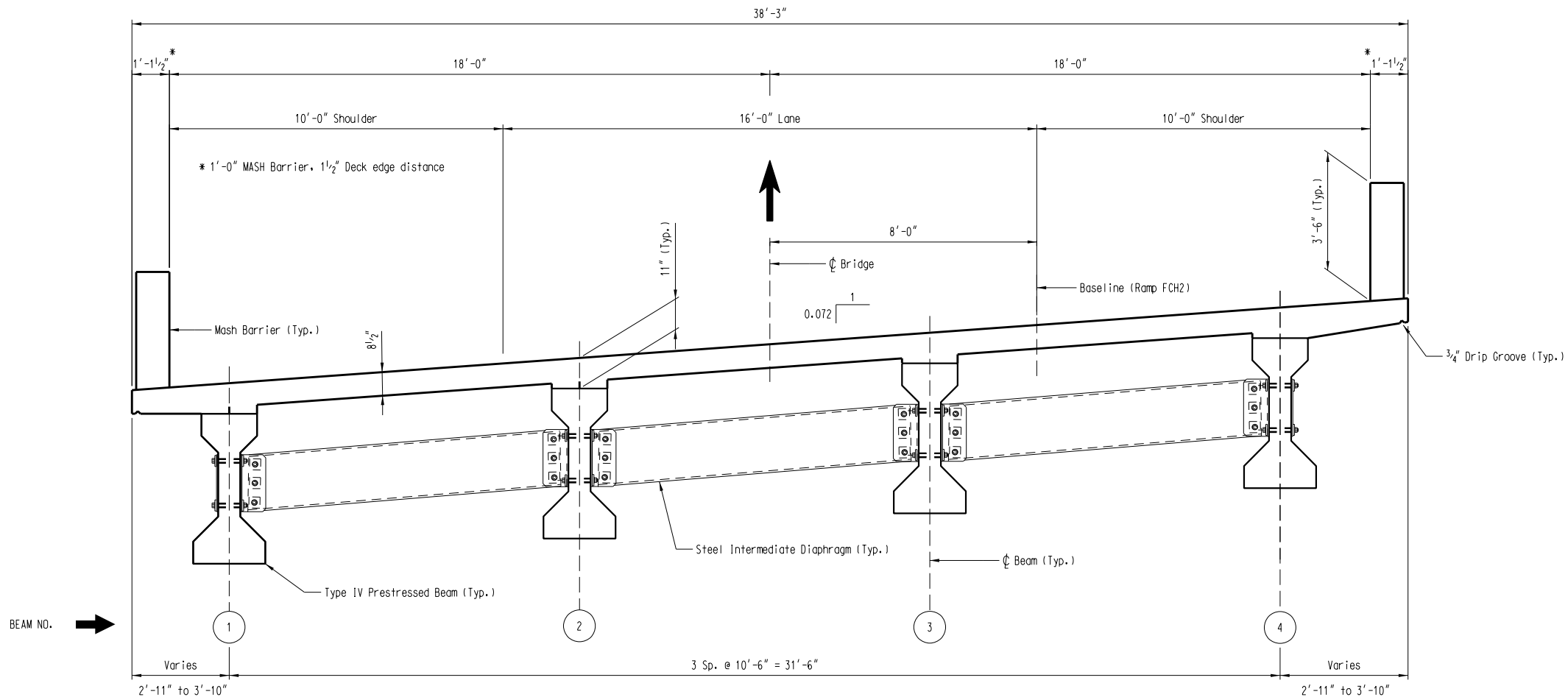
CONCEPTUAL PLANS
NOT FOR CONSTRUCTION

FOR CONSTRUCTION : _____
DATE

REVIEWED	DR.	MSA	VDC	12-22	DATE
		NMA	BY	CHK	

\$\$\$user\$\$\$
\$\$\$date\$\$\$





SECTION THRU SUPERSTRUCTURE

(Looking in Direction of Stationing)

NOTE:
Deck Drains Not Shown

CIVIL ENGINEERING
CONSULTING SERVICES, INC.

CONCEPTUAL
PLANS
NOT FOR
CONSTRUCTION

REV.			
REV.			
REV.			MSA
REVIEWED			
QUAN.			
DR.	NMA	VDC	I2-22
DES.			
BY	CHK.	DATE	

SOUTH CAROLINA
DEPARTMENT OF TRANSPORTATION

**SUPERSTRUCTURE
TYPICAL SECTION**

FCH2 BRIDGE OVER I-26

COUNTY
ORANGEBURG

ROUTE
FCH2 Ramp

DRAWING NO.