



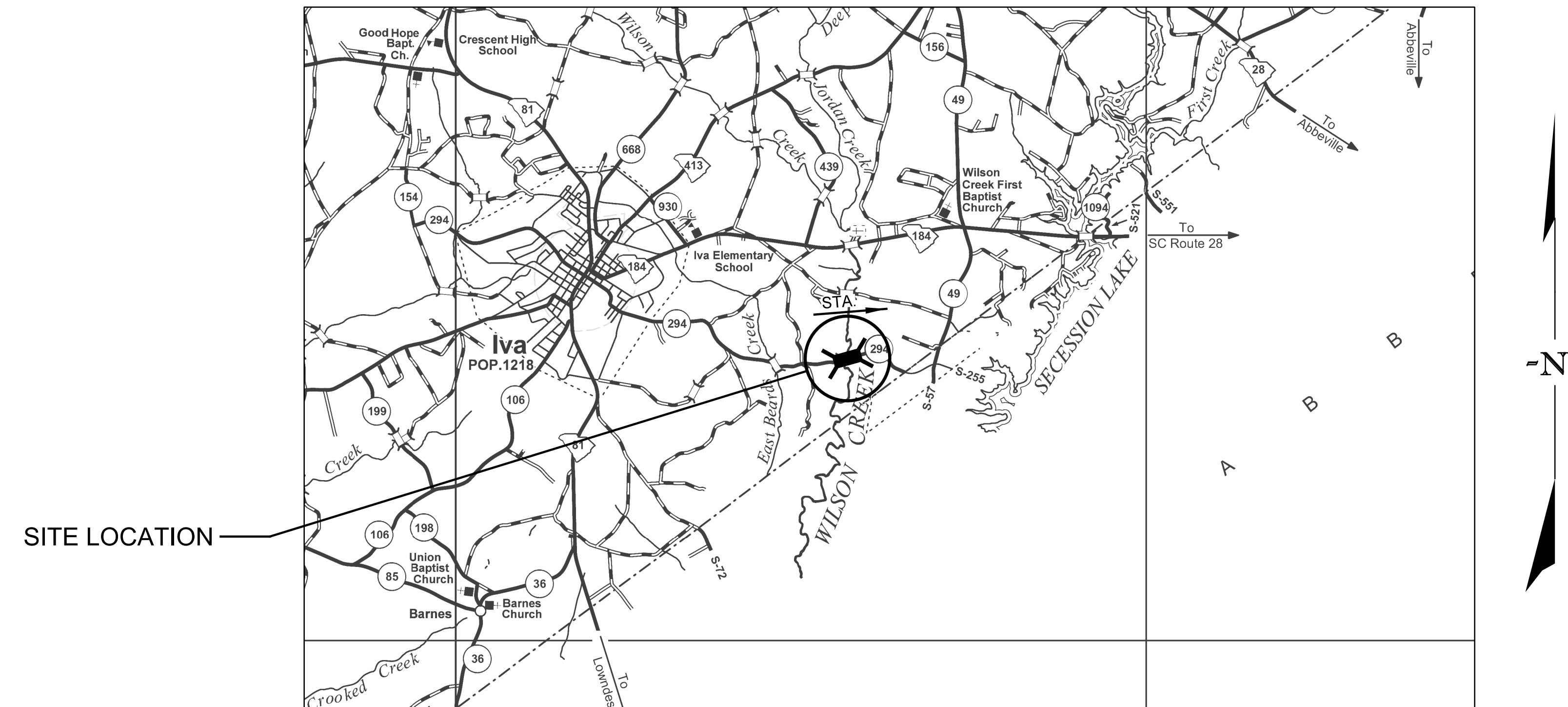
South Carolina Department of Transportation

PROPOSED PLANS  
FOR  
ANDERSON COUNTY  
PROJECT ID P041156  
STATE ROUTE S-04-294 (EAST BROAD STREET)  
REPLACE BRIDGE OVER WILSONS CREEK

Design Reference for these plans is the:

LVB

## Supplemental Design Criteria For Low Volume Bridge Replacement Projects



## SITE LOCATION

Approximate Location of Bridge is

Latitude 34°-17'-44" N  
Longitude 82°-37'-09" W

$$-N$$

## LAYOUT

### 3 DAYS BEFORE DIGGING IN SOUTH CAROLINA

CALL 811

SOUTH CAROLINA 811 (SC811)  
WWW.SC811.COM  
ALL UTILITIES MAY NOT BE A MEMBER OF SC811

ASSET ID NOT ASSIGNED

## TRAFFIC DATA

2020 ADT 150 V.P.D.

2040\* ADT 219\* V.P.D.

TRUCKS 2%

\*DESIGN TRAFFIC DATA

NET LENGTH OF ROADWAY	0.000	MILES
NET LENGTH OF BRIDGES	0.018	MILES
NET LENGTH OF PROJECT	0.018	MILES
LENGTH OF EXCEPTIONS	0.000	MILES
GROSS LENGTH OF PROJECT	0.018	MILES

NOTE: EXCEPT AS MAY OTHERWISE BE SPECIFIED ON THE PLANS OR IN THE SPECIAL PROVISIONS, ALL MATERIALS AND WORKMANSHIP ON THIS PROJECT SHALL CONFORM TO THE SOUTH CAROLINA DEPARTMENT OF TRANSPORTATION STANDARD SPECIFICATIONS FOR HIGHWAY CONSTRUCTION (2007 EDITION) AND THE STANDARD DRAWINGS FOR ROAD CONSTRUCTION IN EFFECT AT THE TIME OF LETTING.

CONSULTING ENGINEERING FIRM

**HDR**

ENGINEER OF RECORD

**CONCEPTUAL  
PLANS  
NOT FOR  
CONSTRUCTION**

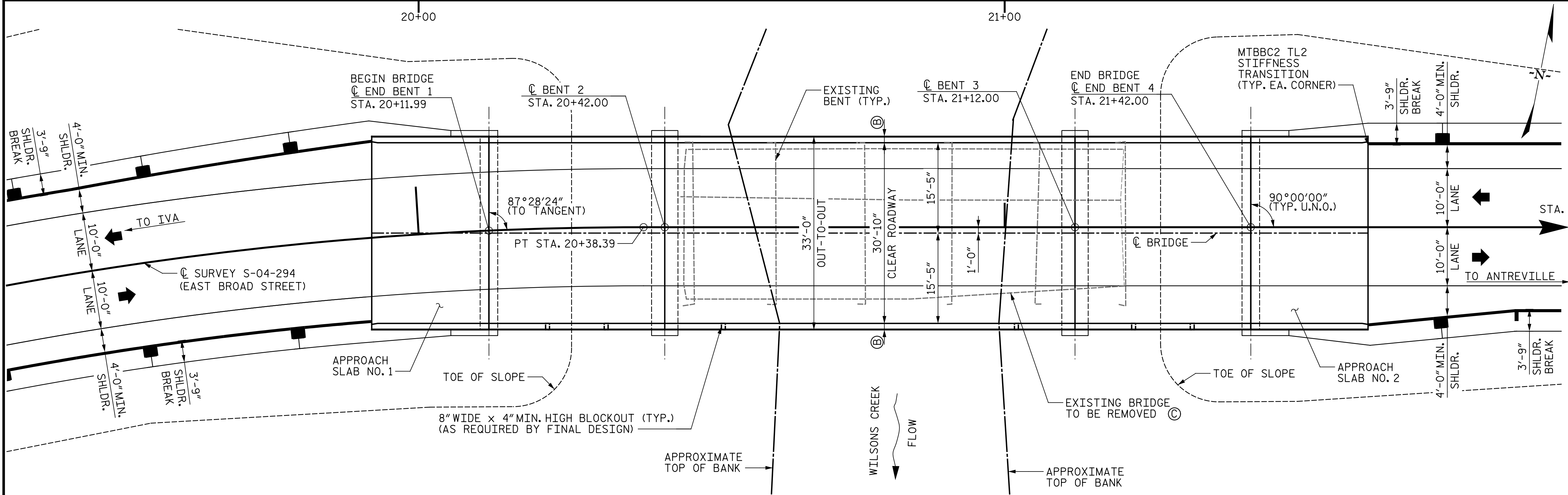
FOR CONSTRUCTION : \_\_\_\_\_ DATE \_\_\_\_\_

## INDEX OF SHEETS

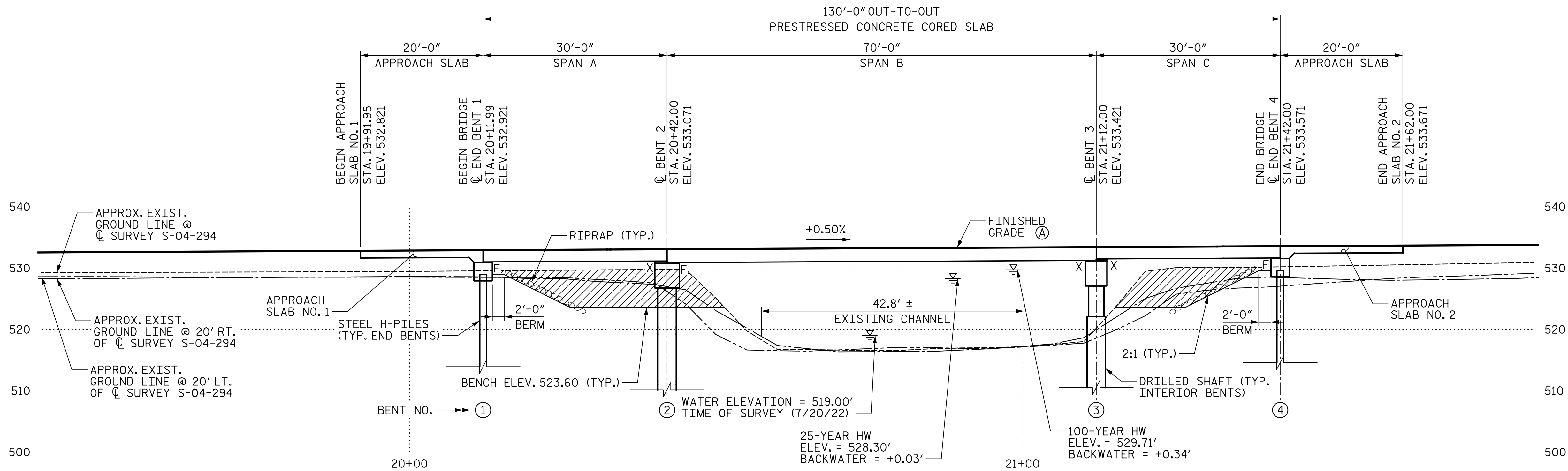
1. TITLE SHEET
2. BRIDGE PLAN AND PROFILE
3. BRIDGE TYPICAL SECTION

REVIEWED			
DR.	RAM	DJS	11-22
	BY	CHK	DATE

RMCKENNA  
11-14-22  
pP041156-B01\_ts.dgn



PLAN



SECTION ALONG SURVEY C S-04-294

HORIZONTAL CURVE DATA

P.I. = 19+31.04  
Δ = 20°46'54" (RT.)  
Dc = 9°34'21"  
T = 109.75'  
L = 217.10'  
R = 9.98'  
R = 598.54'

HYDROLOGY DATA

D.A. = 29.4 SQ. MILES  
Q.25 = 4,170 CFS  
VELOCITY.25 = 5.3 FPS  
AREA FURNISHED UNDER.25 = 891.5 SQ. FT.  
Q.100 = 5,780 CFS  
VELOCITY.100 = 6.3 FPS  
AREA FURNISHED UNDER.100 = 1,055.6 SQ. FT.  
**OVERTOPPING FLOOD**  
Q = 7,690 CFS  
PROBABILITY < 0.2%

REV.			
REV.			
REV.			
REVIEWED			
QUAN.			
DR.	RAM	DJS	11-22
DES.			

NOTES:

- (A) PROPOSED PROFILE SET SO THAT THE LOW CHORD SATISFIES THE HYDRAULIC REQUIREMENTS, SET FORTH BY THE RFP.
- (B) INCLUDES 1'-0" MASH BARRIER PARAPET AND 1" SLAB EXTENSION.
- (C) REMOVE AND DISPOSE OF EXISTING 27'-6" x 75'-0" ± 5-SPAN SIMPLE CONCRETE SLAB BRIDGE AND APPURTENANCES IN ACCORDANCE WITH SECTION 202.4.2 OF THE STANDARD SPECIFICATIONS.

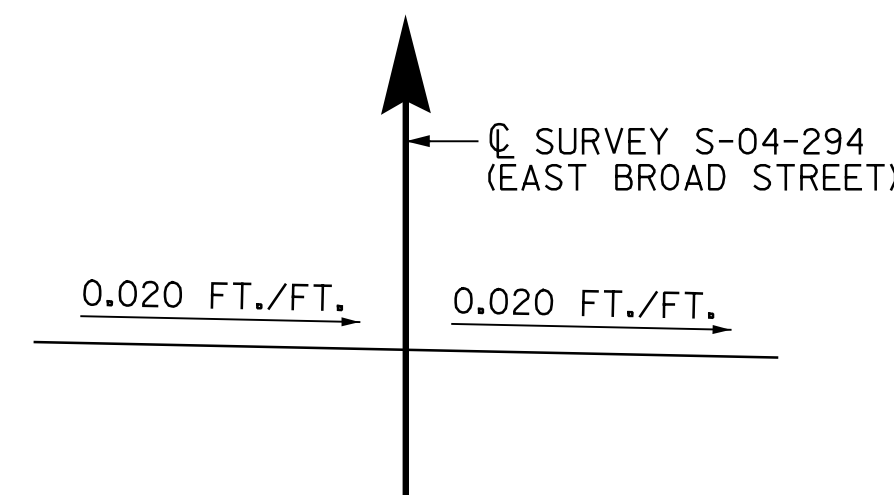
F - DENOTES FIXED BEARING

▨ = EXCAVATE HATCHED AREA

CONTROL POINTS

MSC9  
ELEVATION = 529.23'  
N 899677.57 E 1510915.53

BM2  
ELEVATION = 527.91'  
N 899740.84 E 1510979.06



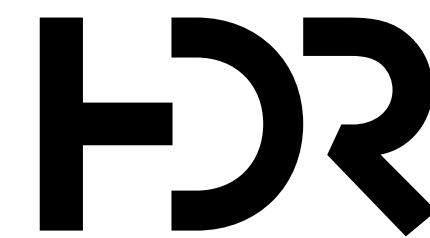
SUPERELEVATION SKETCH

VERTICAL CURVE DATA

PVI = 16+40.00 PVI = 23+30.00  
ELEV. 531.06 ELEV. 534.51  
V.C. = 320' V.C. = 300'

-9.51% +0.50% +7.76%

CONCEPTUAL  
PLANS



HDR ENGINEERING INC.  
OF THE CAROLINAS  
1201 MAIN STREET  
SUITE 800  
COLUMBIA, SC 29201  
803-509-6600

NOT FOR  
CONSTRUCTION

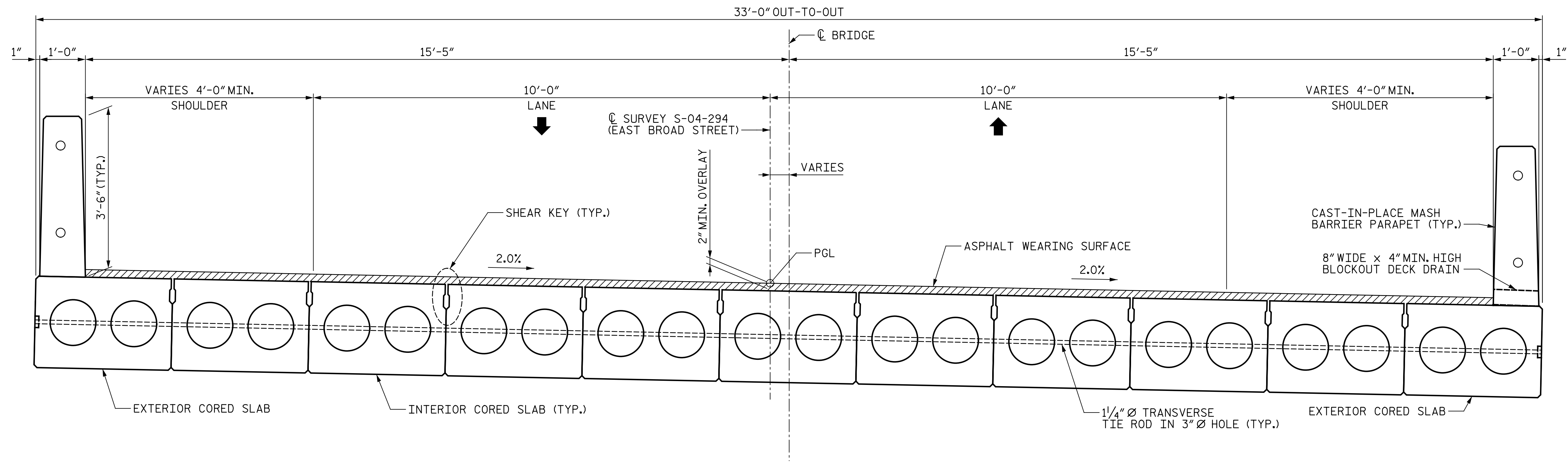
SOUTH CAROLINA  
DEPARTMENT OF TRANSPORTATION

BRIDGE PLAN AND PROFILE

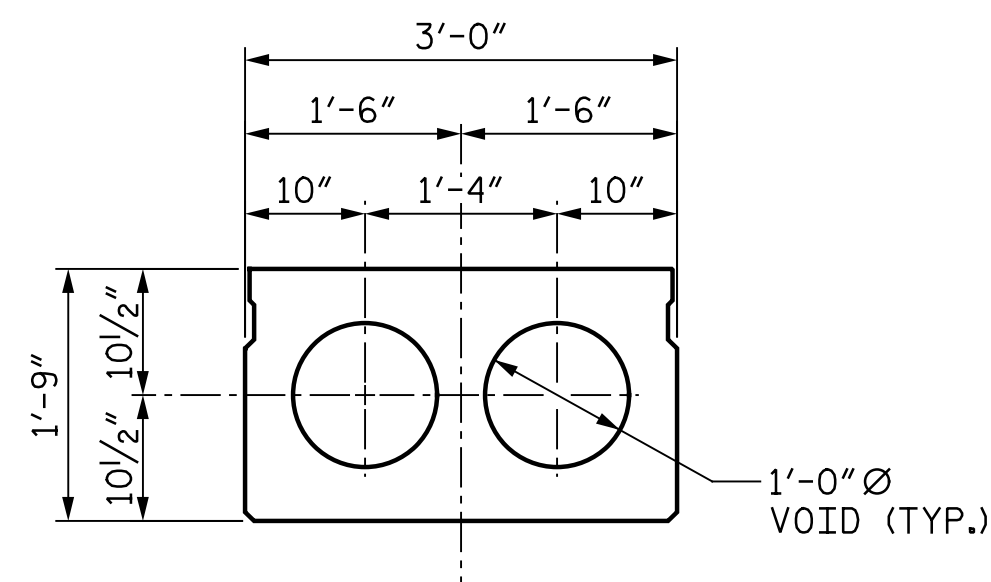
S-04-294 (EAST BROAD STREET) BRIDGE REPLACEMENT  
OVER WILSONS CREEK

COUNTY  
ANDERSON

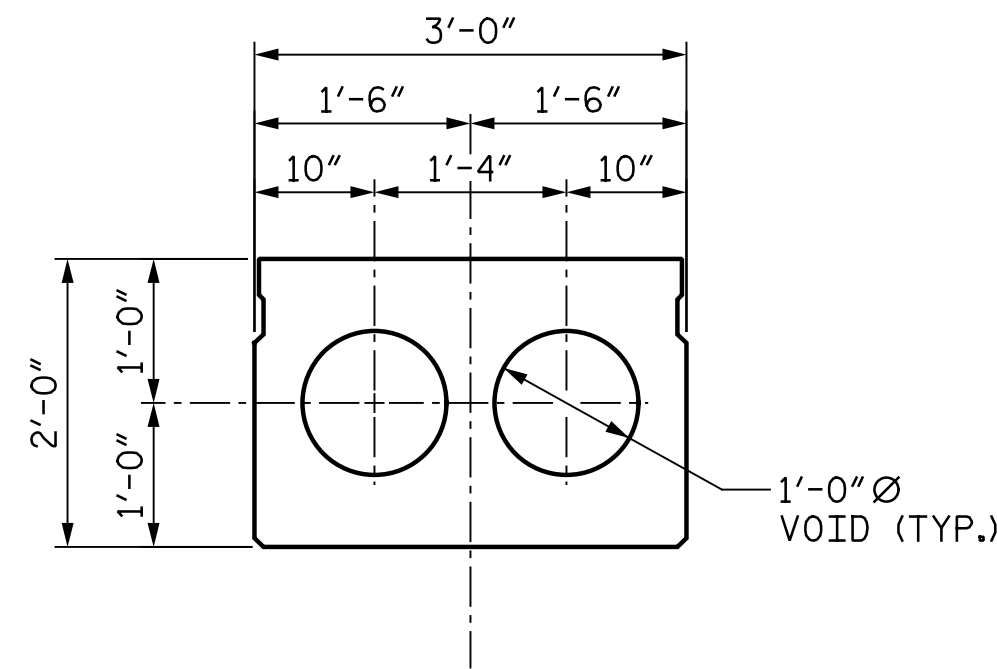
ROUTE  
S-04-294



**TYPICAL SECTION**  
(LOOKING IN DIRECTION OF STATIONING)



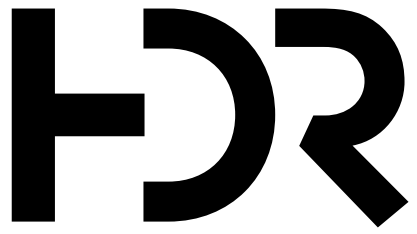
**INTERIOR SLAB SECTION - 30' SPAN**



**INTERIOR SLAB SECTION - 70' SPAN**

CADD FILE INFORMATION 3:55:05 PM  
PLOTTED DATE: 11-14-22  
FILE NAME: BPO41156-B01-ss.dgn

REV.			
REV.			
REV.			
REVIEWED			
QUAN.			
DR.	RAM	DJS	11-22
DES.			

<b>CONCEPTUAL PLANS</b>	 <div>HDR ENGINEERING INC. OF THE CAROLINAS 1201 MAIN STREET SUITE 800 COLUMBIA, SC 29201 803-509-6600</div>
	<div>SOUTH CAROLINA DEPARTMENT OF TRANSPORTATION</div> <div><b>BRIDGE TYPICAL SECTION</b> S-04-294 (EAST BROAD STREET) BRIDGE REPLACEMENT OVER WILSONS CREEK</div>
<b>NOT FOR CONSTRUCTION</b>	<div>COUNTY ANDERSON</div> <div>ROUTE S-04-294</div>