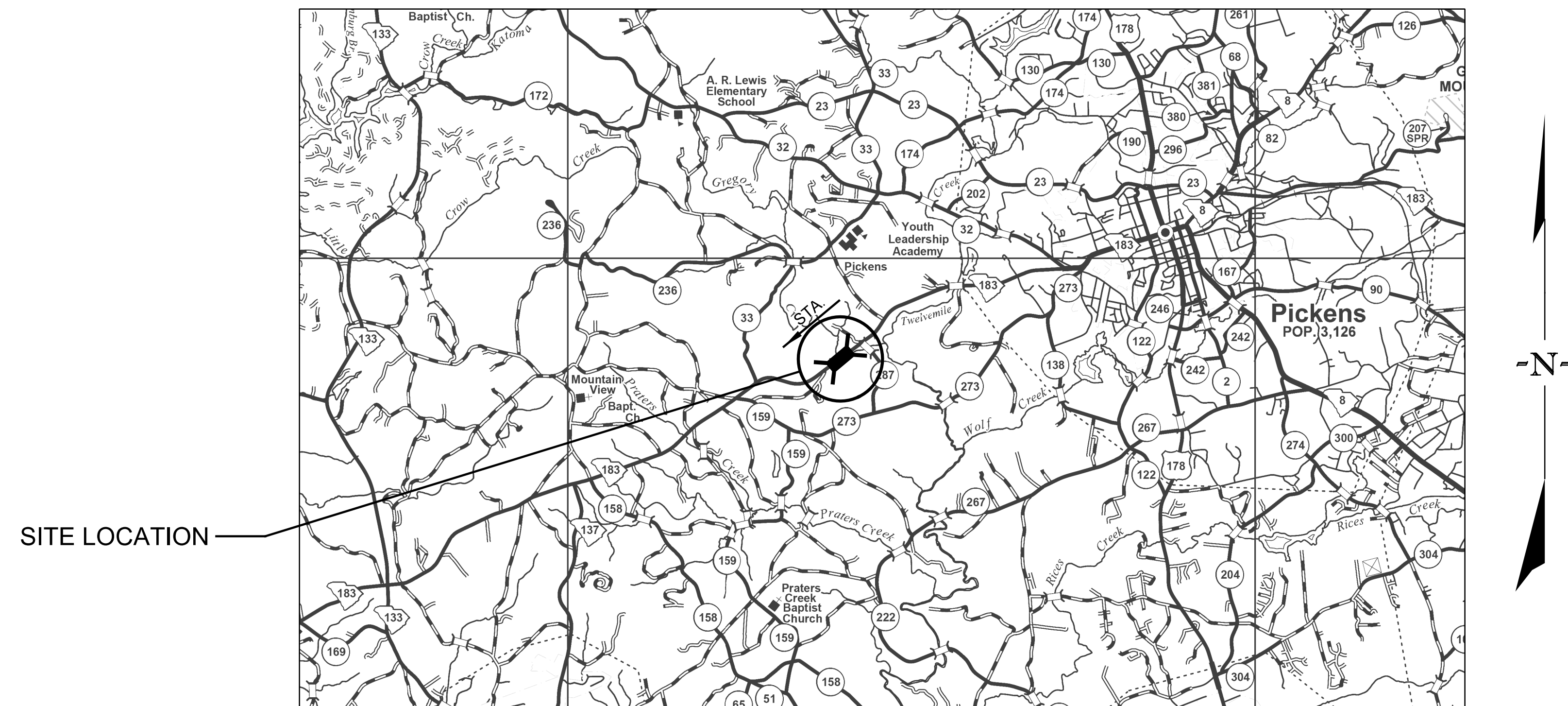




PROPOSED PLANS  
FOR  
PICKENS COUNTY  
PROJECT ID P041230  
STATE ROUTE SC 183 (WALHALLA HWY.)  
REPLACE BRIDGE OVER GREGORY CREEK



Approximate Location of Bridge is

Latitude	<u>34°-51'-55" N</u>
Longitude	<u>82°-45'-47" W</u>

3 DAYS BEFORE DIGGING IN  
SOUTH CAROLINA  
**CALL 811**  
SOUTH CAROLINA 811 (SC811)  
[WWW.SC811.COM](http://WWW.SC811.COM)  
LITIES MAY NOT BE A MEMBER OF SC811

ASSET ID NOT ASSIGNED

## TRAFFIC DATA

2020	ADT	6,000	V.P.D.
2040*	ADT	9,540*	V.P.D.

TRUCKS 8%

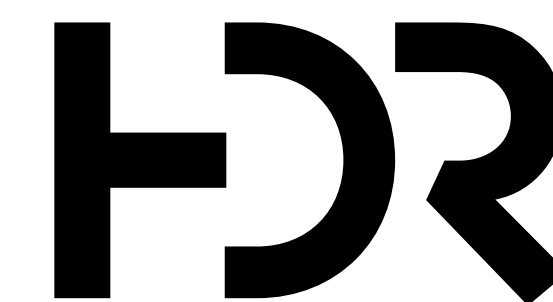
\*DESIGN TRAFFIC DATA

## LAYOUT

NET LENGTH OF ROADWAY	0.000	MILES
NET LENGTH OF BRIDGES	0.028	MILES
NET LENGTH OF PROJECT	0.028	MILES
LENGTH OF EXCEPTIONS	0.000	MILES
GROSS LENGTH OF PROJECT	0.028	MILES

NOTE: EXCEPT AS MAY OTHERWISE BE SPECIFIED ON THE PLANS OR IN THE SPECIAL PROVISIONS, ALL MATERIALS AND WORKMANSHIP ON THIS PROJECT SHALL CONFORM TO THE SOUTH CAROLINA DEPARTMENT OF TRANSPORTATION STANDARD SPECIFICATIONS FOR HIGHWAY CONSTRUCTION (2007 EDITION) AND THE STANDARD DRAWINGS FOR ROAD CONSTRUCTION IN EFFECT AT THE TIME OF LETTING.

CONSULTING ENGINEERING FIRM



ENGINEER OF RECORD

**CONCEPTUAL  
PLANS  
NOT FOR  
CONSTRUCTION**

FOR CONSTRUCTION : \_\_\_\_\_ DATE \_\_\_\_\_

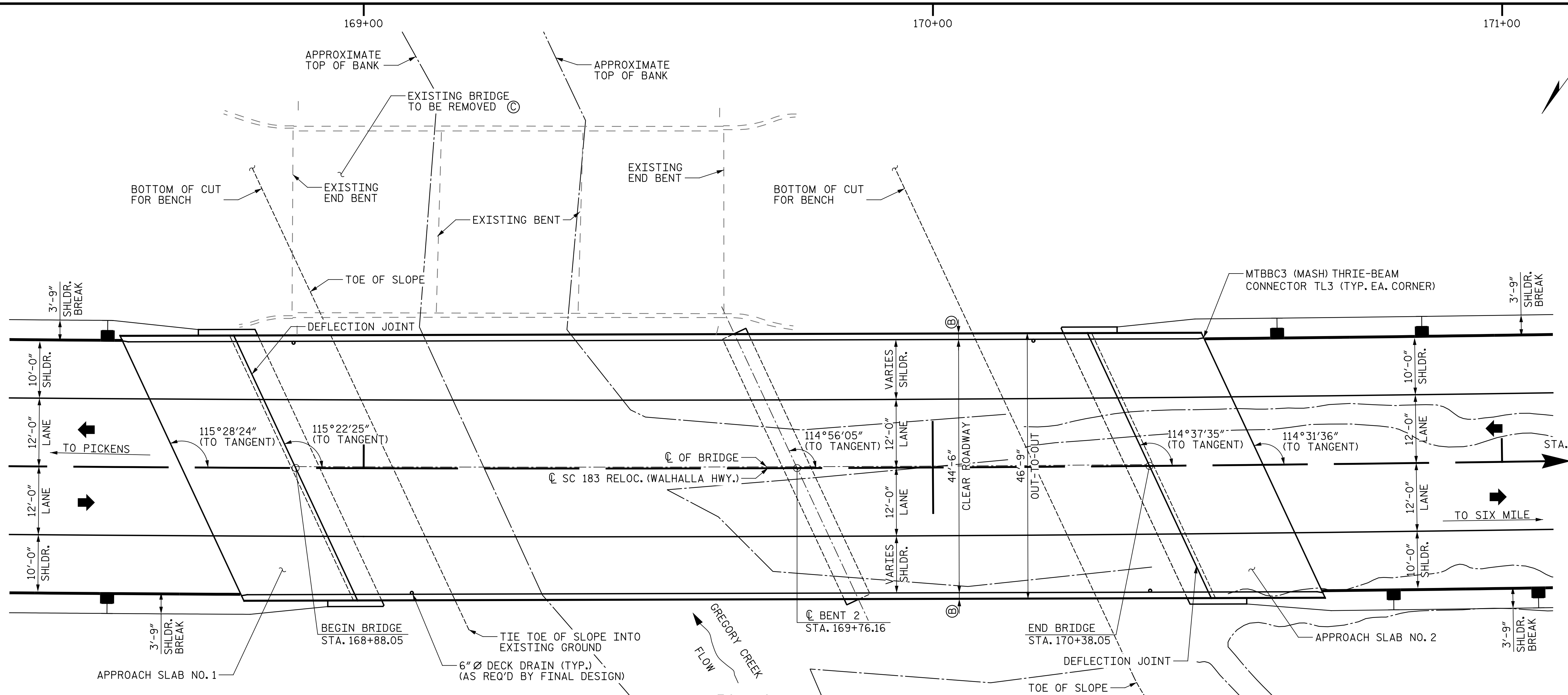
## INDEX OF SHEETS

1. TITLE SHEET
2. BRIDGE PLAN AND PROFILE
3. BRIDGE TYPICAL SECTION

REVIEWED			
DR.	RAM	DJS	11-22
	BY	CHK	DATE

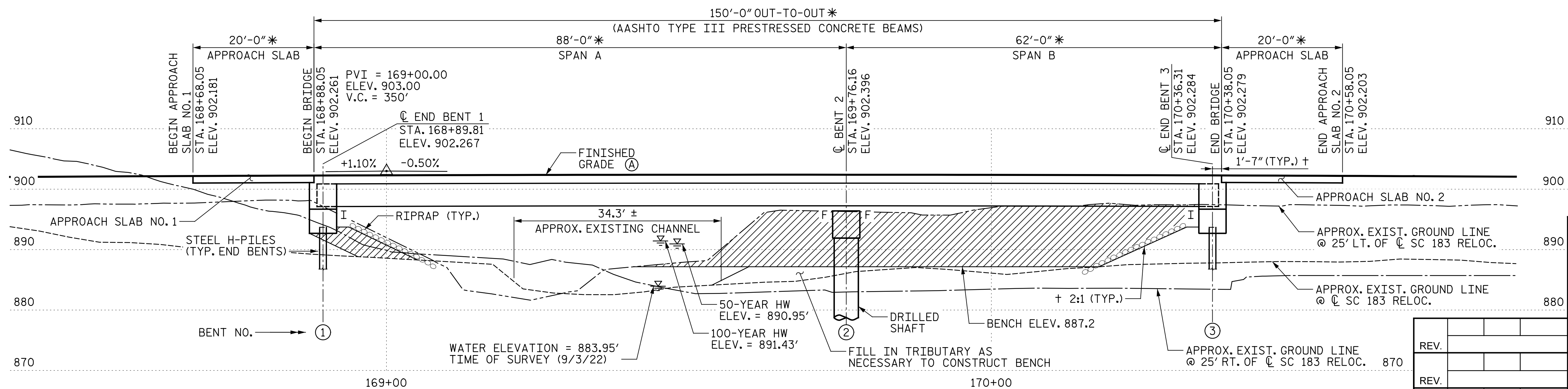
RMCKENNA  
12-16-22  
pP041230-B01\_ts.dgn

CADD FILE INFORMATION 3:52:10 PM  
PLOTTED DATE: 12-22-22  
FILE NAME: BFO4230-B01.bpd.dgn



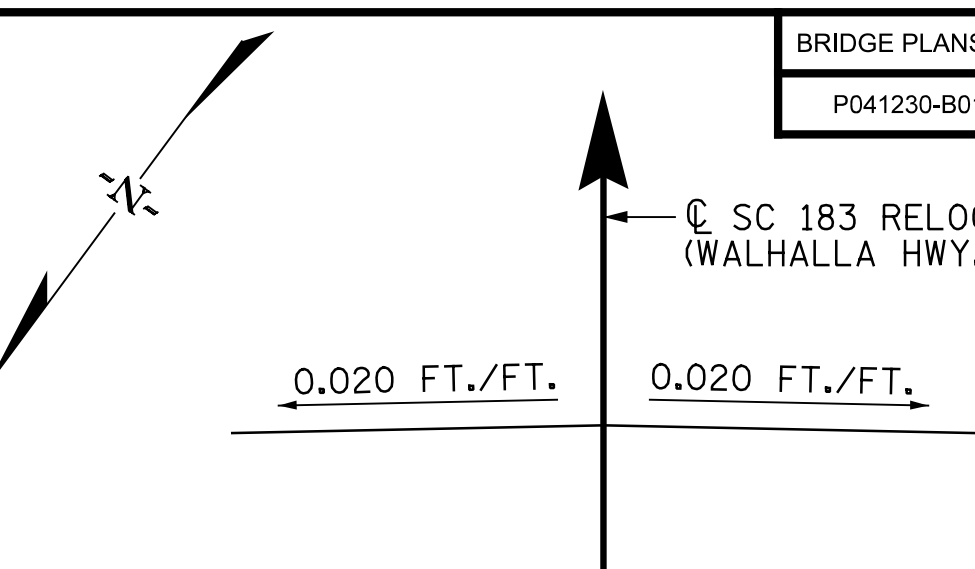
PLAN

NOTE: BRIDGE END DRAINAGE IS NOT SHOWN



SECTION ALONG  $\text{CL}$  SC 183 RELOC. (WALHALLA HWY.)

REV.			
REV.			
REV.			
REVIEWED			
QUAN.			
DR.	RAM	DJS	11-22
DES.			
BY	CHK.	DATE	



TYPICAL THROUGHOUT BRIDGE  
SUPERELEVATION SKETCH

HORIZONTAL CURVE DATA

P.I. = 169+36.36  
 $\Delta$  =  $7^{\circ}01'23''$  (LT.)  
Dc =  $0^{\circ}29'54''$   
T = 705.68'  
L = 1,409.59'  
E = 21.63'  
R = 11,500.00'

CONTROL POINTS

CP 32 BRIDGE NL  
ELEVATION = 897.35'  
N 1107575.37 E 1471056.82

BM1 BRIDGE NL IN PP  
ELEVATION = 897.63'  
N 1107793.78 E 1471243.77

HYDROLOGY DATA

D.A. = 5.3 SQ. MILES  
Q.50 = 1,810 CFS  
VELOCITY.50 = 3.7 FPS  
AREA FURNISHED UNDER.50 = 562.6 SQ. FT.  
Q.100 = 2,100 CFS  
VELOCITY.100 = 3.8 FPS  
AREA FURNISHED UNDER.100 = 626.1 SQ. FT.

OVERTOPPING FLOOD

Q > 2,850 CFS  
PROBABILITY < 0.2%

NOTES:

- (A) PROPOSED PROFILE SET SO THAT THE LOW CHORD SATISFIES THE HYDRAULIC REQUIREMENTS, SET FORTH BY THE RFP.
- (B) INCLUDES 1'-0" MASH BARRIER PARAPET AND 1/2" SLAB EXTENSION.
- (C) REMOVE AND DISPOSE OF EXISTING 33'-6" x 75'-9"  $\pm$  3-SPAN SIMPLE SPAN STEEL GIRDER BRIDGE AND APPURTENANCES IN ACCORDANCE WITH SECTION 202.4.2 OF THE STANDARD SPECIFICATIONS AND ENVIRONMENTAL REQUIREMENTS.

F - DENOTES FIXED BEARING

I - DENOTES INTEGRAL END BENT

+ - NORMAL TO SKEW

\* - MEASURED ALONG  $\text{CL}$  OF BRIDGE

= EXCAVATE HATCHED AREA OF EXISTING BANK TO ALLOW FOR HYDRAULIC OPENING

CONCEPTUAL  
PLANS



HDR ENGINEERING INC.  
OF THE CAROLINAS  
1201 MAIN STREET  
SUITE 800  
COLUMBIA, SC 29201  
803-509-6600

NOT FOR  
CONSTRUCTION

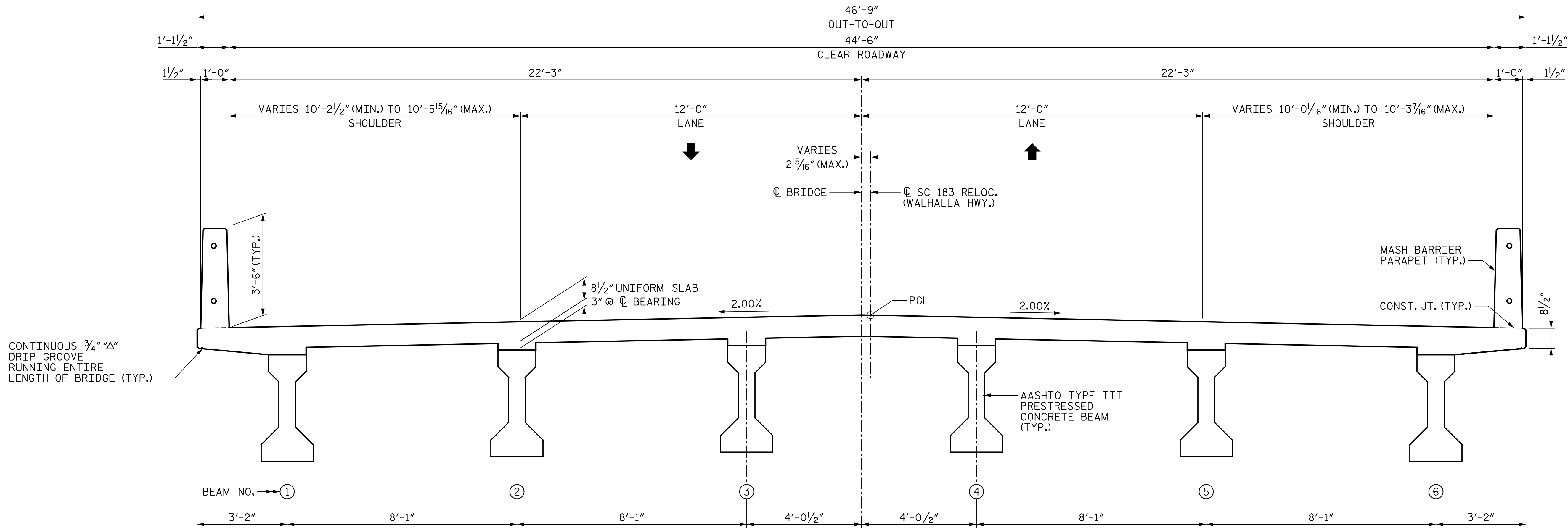
SOUTH CAROLINA  
DEPARTMENT OF TRANSPORTATION

BRIDGE PLAN AND PROFILE

SC 183 (WALHALLA HWY.) BRIDGE REPLACEMENT  
OVER GREGORY CREEK

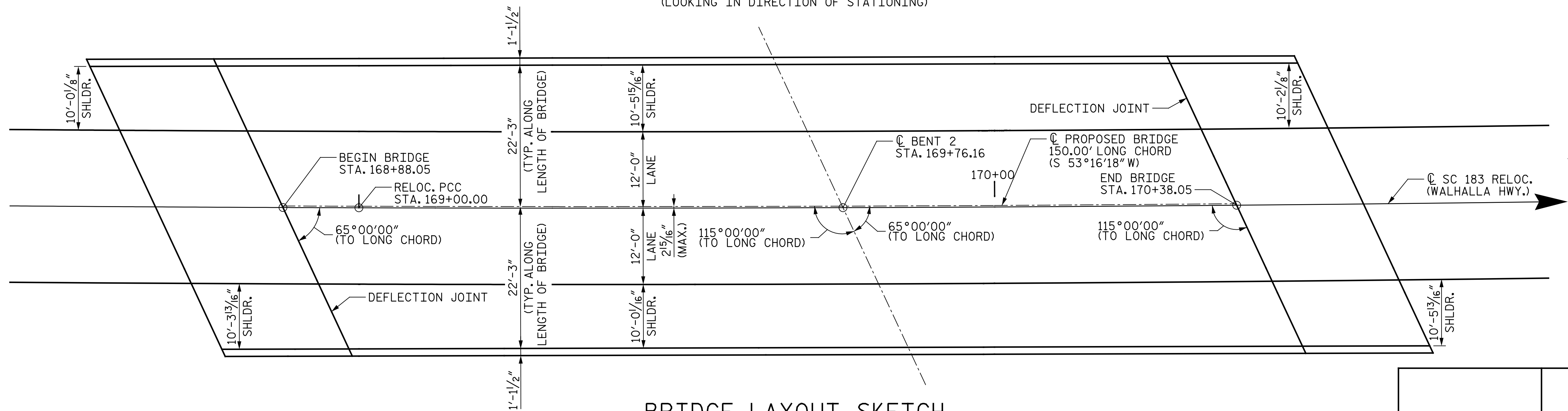
COUNTY  
PICKENS

ROUTE  
SC 183



### TYPICAL SECTION

(LOOKING IN DIRECTION OF STATIONING)



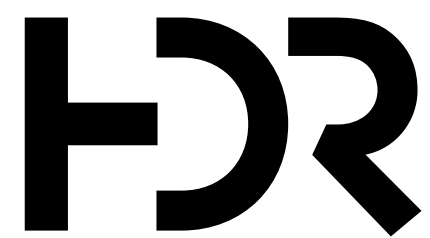
### BRIDGE LAYOUT SKETCH

(NOTE: BARRIERS AND GIRDERS ARE ALIGNED PARALLEL WITH LONG CHORD)

REV.			
REV.			
REV.			
REVIEWED			
QUAN.			
DR.	RAM	DJS	11-22
DES.			
	BY	CHK.	DATE

CONCEPTUAL  
PLANS

NOT FOR  
CONSTRUCTION



HDR ENGINEERING INC.  
OF THE CAROLINAS  
1201 MAIN STREET  
SUITE 800  
COLUMBIA, SC 29201  
803-509-6600

SOUTH CAROLINA  
DEPARTMENT OF TRANSPORTATION

#### BRIDGE TYPICAL SECTION

SC 183 (WALHALLA HWY.) BRIDGE REPLACEMENT  
OVER GREGORY CREEK

COUNTY	ROUTE
PICKENS	SC 183