

PIN	SHEET NO.	TOTAL SHEETS
32099	1	14



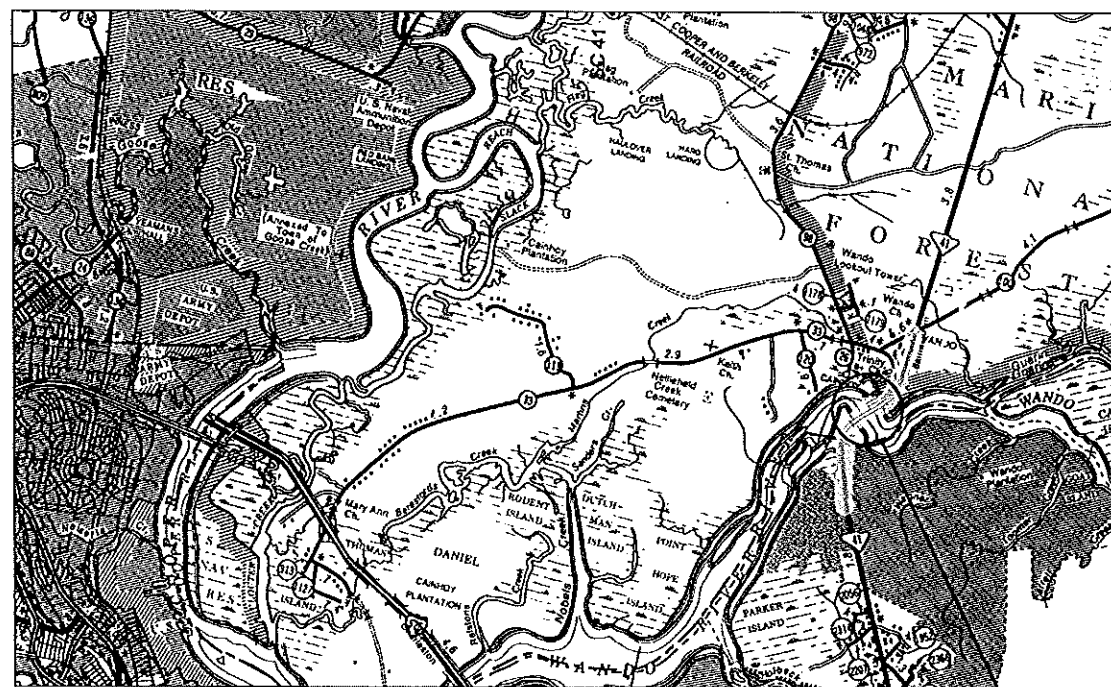
South Carolina Department of Transportation

PROPOSED PLANS FOR

BERKELEY & CHARLESTON COUNTIES FILE NO. 8.158B ROUTE SC 41 REPLACE BRIDGE OVER WANDO RIVER

INDEX OF SHEETS

1. Title Sheet
2. Bridge Plan and Profile (1)
3. Bridge Plan and Profile (2)
4. Typical Sections (1)
5. Typical Sections (2)
6. B-01 Bascule General Plan
7. B-02 Bascule Elevation
8. B-03 Bascule Framing Plan
9. B-04 Bascule Typical Sections
10. B-05 Bascule Pier Section
11. B-06 Bascule Longitudinal Section
12. B-07 Machinery Room Layout
13. B-08 Span Lock Machinery Layout
14. B-09 Electrical Room Layout



LAYOUT

SITE LOCATION

Submit Shop Plans to:

SCDOT
Preconstruction Support Engineer
Attn: Logistics Coordinator - Shop Plans
955 Park Street - Room 409
Columbia, SC 29201

Approximate Location of Bridge Is

Latitude 00° 00' - 00"
Longitude 00° 00' - 00"

FOR CONSTRUCTION

	INITIAL	DATE
RPG - HYDROLOGY		
RPG - STRUCTURES		
RPG - GEOTECHNICAL		
PRECONSTRUCTION SUPPORT - STRUCTURES		
RPG - DESIGN MANAGER		
RPG - PROGRAM MANAGER		

3 DAYS BEFORE DIGGING IN
SOUTH CAROLINA
CALL 811
PALMETTO UTILITY PROTECTION SERVICES, INC. (PUPS)
ALL UTILITIES MAY NOT BE A MEMBER OF PUPS.

NET LENGTH OF ROADWAY	0.000	MILES
NET LENGTH OF BRIDGES	0.378	MILES
NET LENGTH OF PROJECT	0.378	MILES
LENGTH OF EXCEPTIONS	0.000	MILES
GROSS LENGTH OF PROJECT	0.378	MILES

NOTE: EXCEPT AS MAY OTHERWISE BE SPECIFIED ON THE PLANS OR IN THE SPECIAL PROVISIONS, ALL MATERIALS AND WORKMANSHIP ON THIS PROJECT SHALL CONFORM TO THE SOUTH CAROLINA DEPARTMENT OF TRANSPORTATION STANDARD SPECIFICATIONS FOR HIGHWAY CONSTRUCTION (2007 EDITION) AND THE STANDARD DRAWINGS FOR ROAD CONSTRUCTION IN EFFECT AT THE TIME OF LETTING.

CONSULTING ENGINEERING FIRM
Triplet-King & Associates, Inc.
CONSULTING ENGINEERS
P.O. BOX 70
ROCK HILL, SOUTH CAROLINA 29731

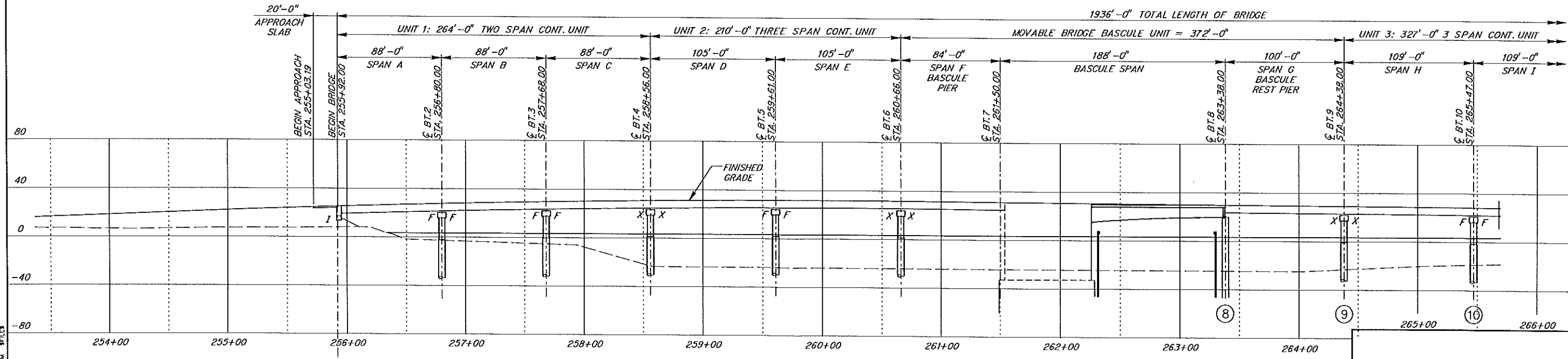
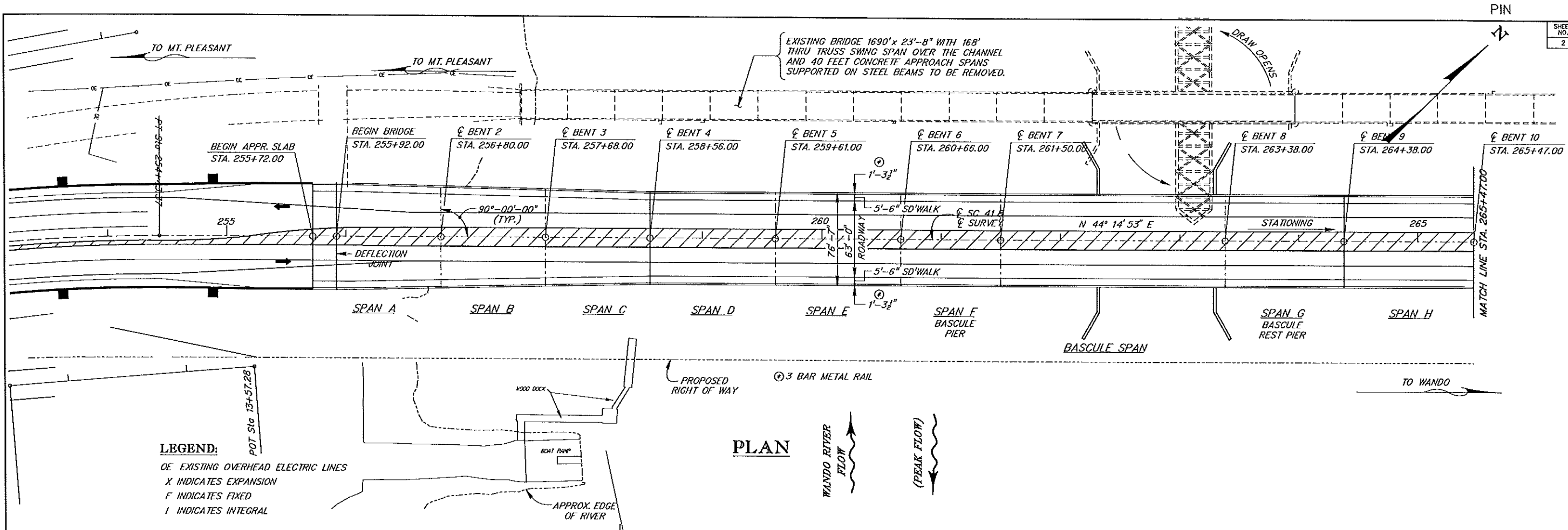
ENGINEER OF RECORD
FOR CONSTRUCTION: _____ DATE _____

TRAFFIC DATA

2008	ADT	4,300
2008	ADT	7,900
	TRUCKS	20 %

REVIEWED	DR.	XXX	CHK	DATE
		XXX	BY	

DLV 5/20/08



PROFILE
(SECTION ALONG ϕ SC 41 B ϕ SURVEY)

CONCEPTUAL PLANS FOR REVIEW	REV.			BRIDGE PLAN & PROFILE (1) SC 41 BRIDGE REPLACEMENT OVER WANDO RIVER Triplet-King & Associates, Inc. CONSULTING ENGINEERS P.O. BOX 70 ROCK HILL, SOUTH CAROLINA 29731
	REV.			
	REV.			
	REV.			
QUAN.				
DR.	DEV			
DES.	AEL			
BY	CHK.	DATE		

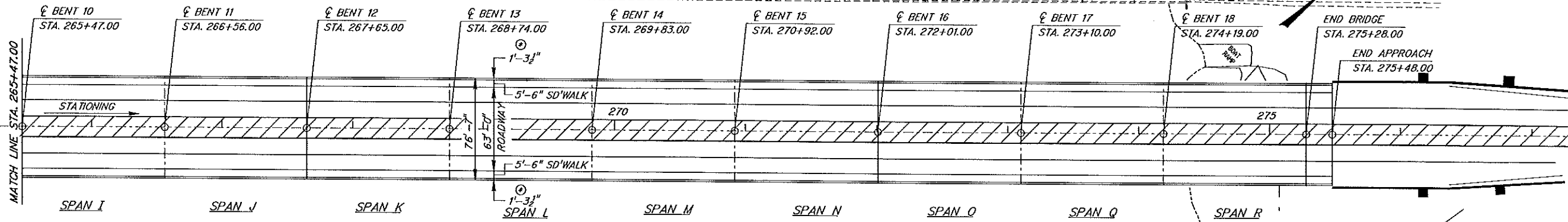
D.V. 12/15/2010 4:26:20 PM 3FILES

PIN

TO MT. PLEASANT

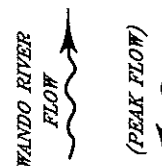
EXISTING BRIDGE 1690' x 23'-8" WITH 168' THRU TRUSS SWING SPAN OVER THE CHANNEL AND 40 FEET CONCRETE APPROACH SPANS SUPPORTED ON STEEL BEAMS TO BE REMOVED.

APPROX. EDGE OF RIVER



3 BAR METAL RAIL

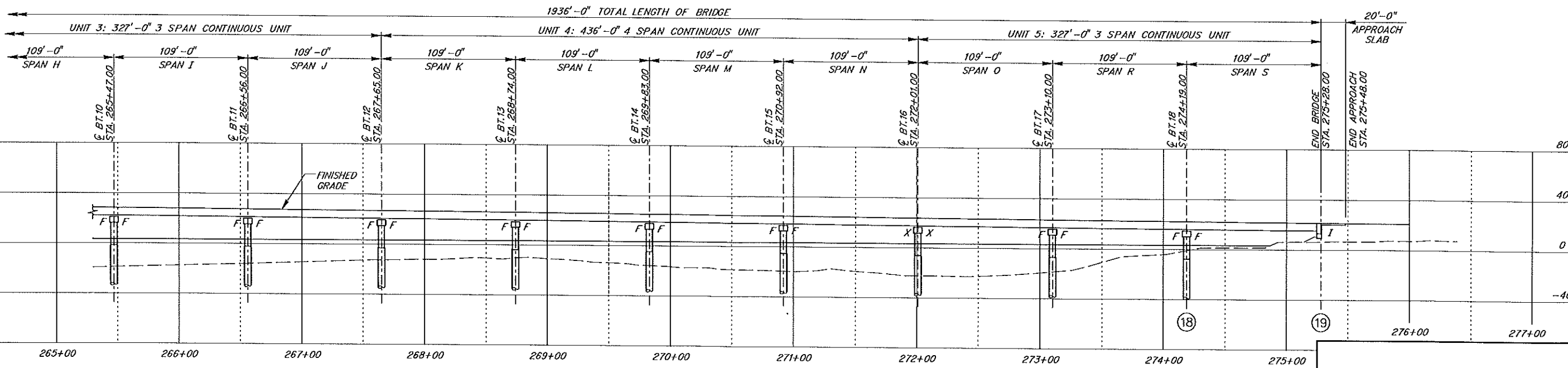
PROPOSED RIGHT OF WAY



PLAN

LEGEND:

- OE EXISTING OVERHEAD ELECTRIC LINES
- X INDICATES EXPANSION
- F INDICATES FIXED
- I INDICATES INTEGRAL



PROFILE

(SECTION ALONG E SC 41 & E SURVEY)

CONCEPTUAL PLANS FOR REVIEW

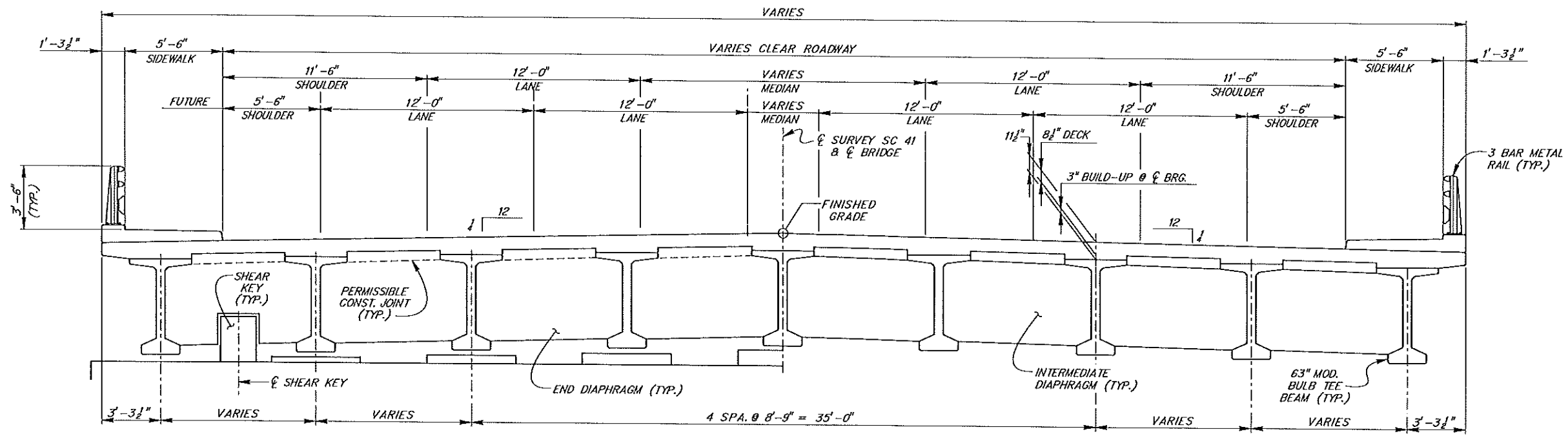
REV.			
REV.			
REV.			
REVIEWED			
QUAN.			
DR.	D&V		
DES.	AEL		
BY	CHK.	DATE	

BRIDGE PLAN & PROFILE (2)
SC 41 BRIDGE REPLACEMENT OVER WANDO RIVER

Triplet-King & Associates, Inc.
 CONSULTING ENGINEERS
 P.O. BOX 70
 ROCK HILL, SOUTH CAROLINA 29151

FILE NO.	ROUTE	COUNTY	DRAWING NO.
8.158B	SC 41	BERKELEY/CHARLESTON	

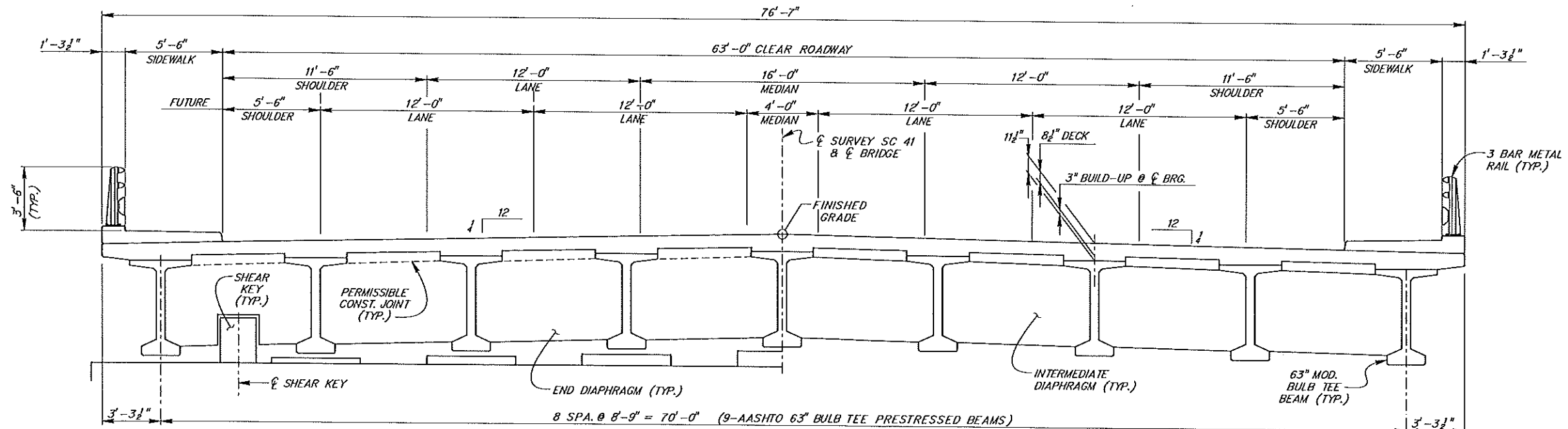
DLV 12/15/2010 4:13:20 PM \$FILES



HALF SECTION AT END BENT
(END DIAPHRAGM)

TYPICAL SECTION (1)
(LOOKING IN DIRECTION OF STATIONING)
(SPANS A THRU C)

HALF SECTION AT MIDSPAN
(INTERMEDIATE DIAPHRAGM)



HALF SECTION AT END BENT
(END DIAPHRAGM)

TYPICAL SECTION (2)
(LOOKING IN DIRECTION OF STATIONING)
(SPANS H THRU S)

HALF SECTION AT MIDSPAN
(INTERMEDIATE DIAPHRAGM)

DLV 12/15/2010 4:13:23 PM \$FILES

SOUTH CAROLINA
DEPARTMENT OF TRANSPORTATION

TYPICAL SECTIONS (1)
SC 41 BRIDGE REPLACEMENT
OVER WANDO RIVER

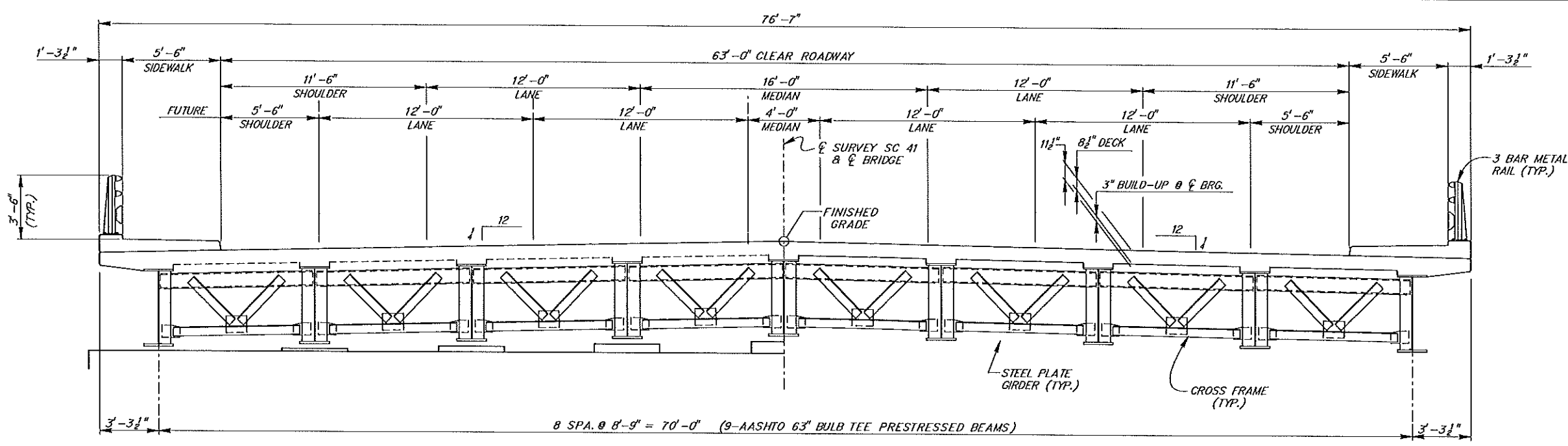
Triplet-King & Associates, Inc.
CONSULTING ENGINEERS
P.O. BOX 10
ROCK HILL, SOUTH CAROLINA 29173

CONCEPTUAL
PLANS FOR
REVIEW

RRV.			
RRV.			
RRV.			
REVIEWED			
QUAN.			
DR.	D&V		
DES.	AEL		
BY	CHK.	DATE	

FILE NO.	ROUTE	COUNTY	DRAWING NO.
8.158B	SC 41	BERKELEY/CHARLESTON	

SHEET NO.	TOTAL SHEETS
5	14



HALF SECTION AT END DIAPHRAGM
(END DIAPHRAGM)

TYPICAL SECTION (3)
(LOOKING IN DIRECTION OF STATIONING)
(BASCULE APPROACH SPANS)

HALF SECTION AT MIDSPAN
(INTERMEDIATE DIAPHRAGM)

D.V. 12/15/2010 4:13:26 PM \$FILES

CONCEPTUAL
PLANS FOR
REVIEW

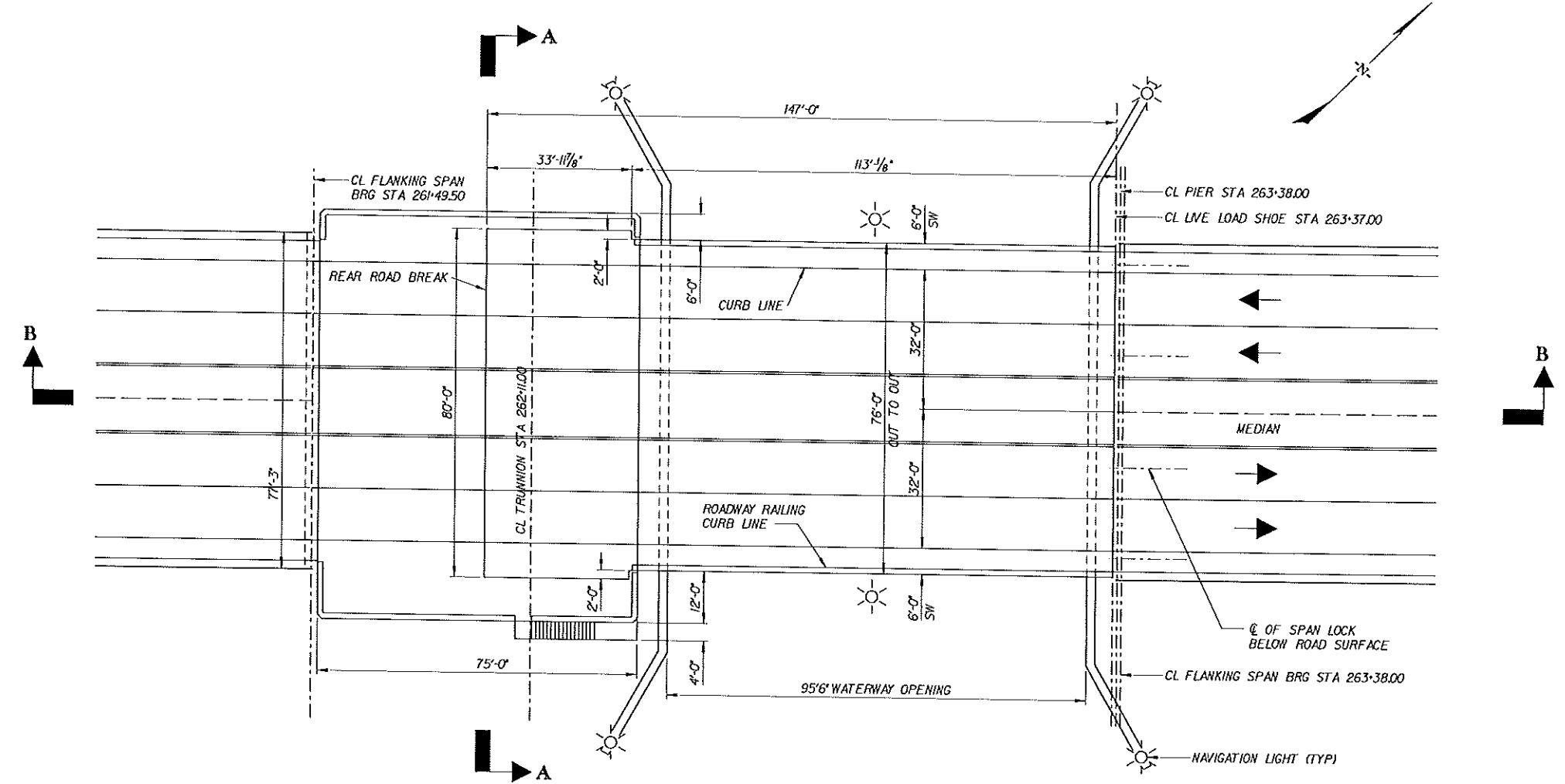
REV.			
REV.			
REV.			
REVIEWED			
QUAN.			
DR.	DEV		
DES.	AEL		
BY	CHK.	DATE	

SOUTH CAROLINA
DEPARTMENT OF TRANSPORTATION

TYPICAL SECTIONS (2)
**SC 41 BRIDGE REPLACEMENT
OVER WANDO RIVER**

Triplett-King & Associates, Inc.
CONSULTING ENGINEERS
P.O. BOX 70
ROCK HILL, SOUTH CAROLINA 29731

FILE NO.	ROUTE	COUNTY	DRAWING NO.
8.158B	SC 41	BERKELEY/CHARLESTON	



BASCULE PIER PLAN

SUBSEQUENT DATES 3 TIMES 4 FEET

CONCEPTUAL
PLANS FOR
REVIEW

REV.			
REV.			
REV.			
QUAN.			
DR.	JSJ	HFP	12-10
DES.	KVC	HFP	12-10
BY	CHE.	DATE	

SOUTH CAROLINA
DEPARTMENT OF TRANSPORTATION

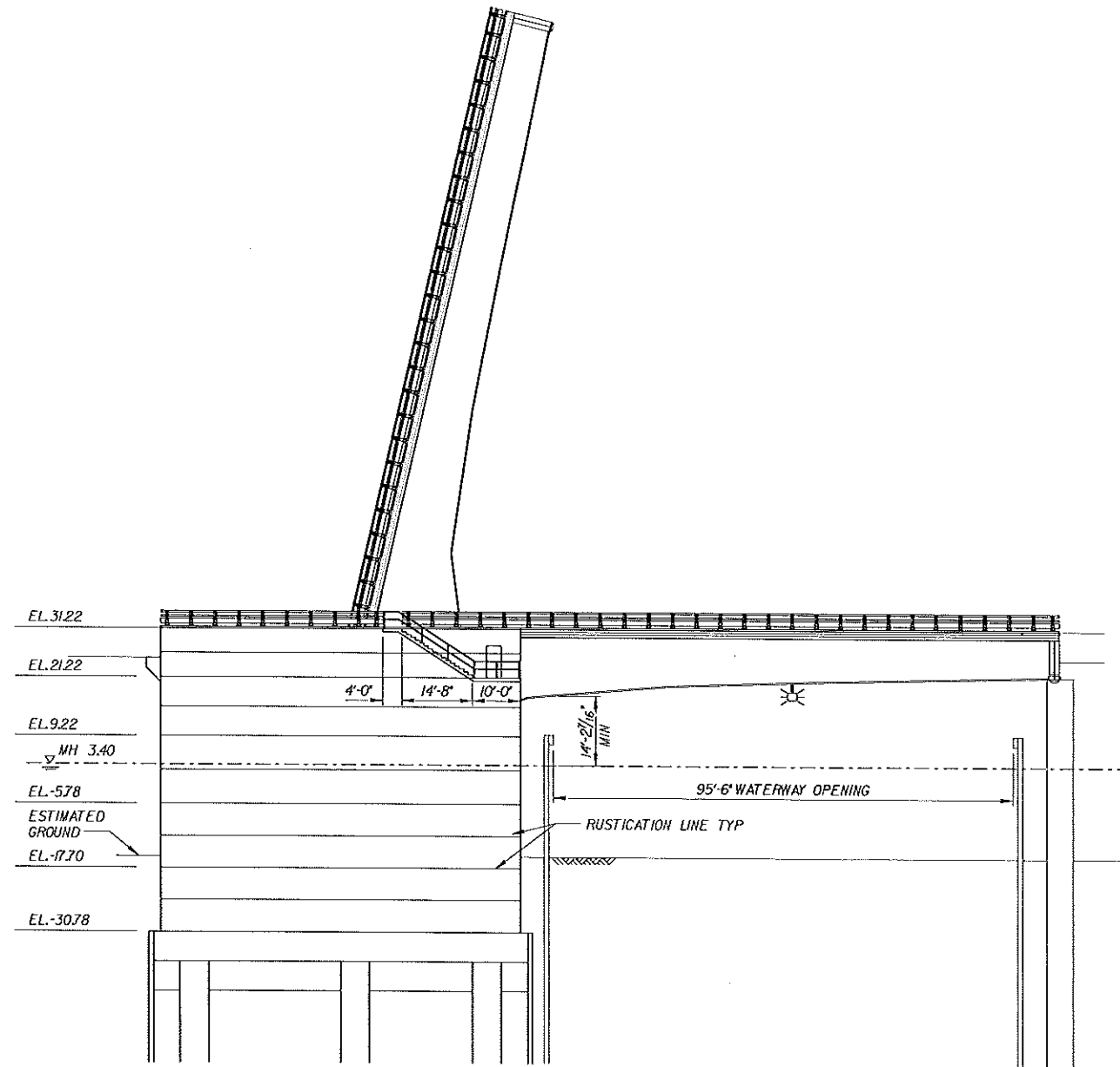
**BASCULE
GENERAL PLAN**

Tripiett-King & Associates, Inc.
CONSULTING ENGINEERS
P.O. BOX 15
ROCK HILL, SOUTH CAROLINA 29731

HR
HDR Engineering, Inc.
of the Carolinas
261 East Park Lane, Suite 200
Greenville, SC 29615

FILE NO.	ROUTE	COUNTY	DRAWING NO.
8.158B	SC 41	BERKELEY/CHARLESTON	B-01

SHEET NO.	TOTAL SHEETS



BASCULE PIER ELEVATION

USERNAME: SDAYES STINES SFLES

CONCEPTUAL
PLANS FOR
REVIEW

REV.	
REV.	
REV.	
REVIEWED	
QUAN.	
DR.	JSJ HFP 12-10
DES.	KVC HFP 12-10
BY	CHK. DATE

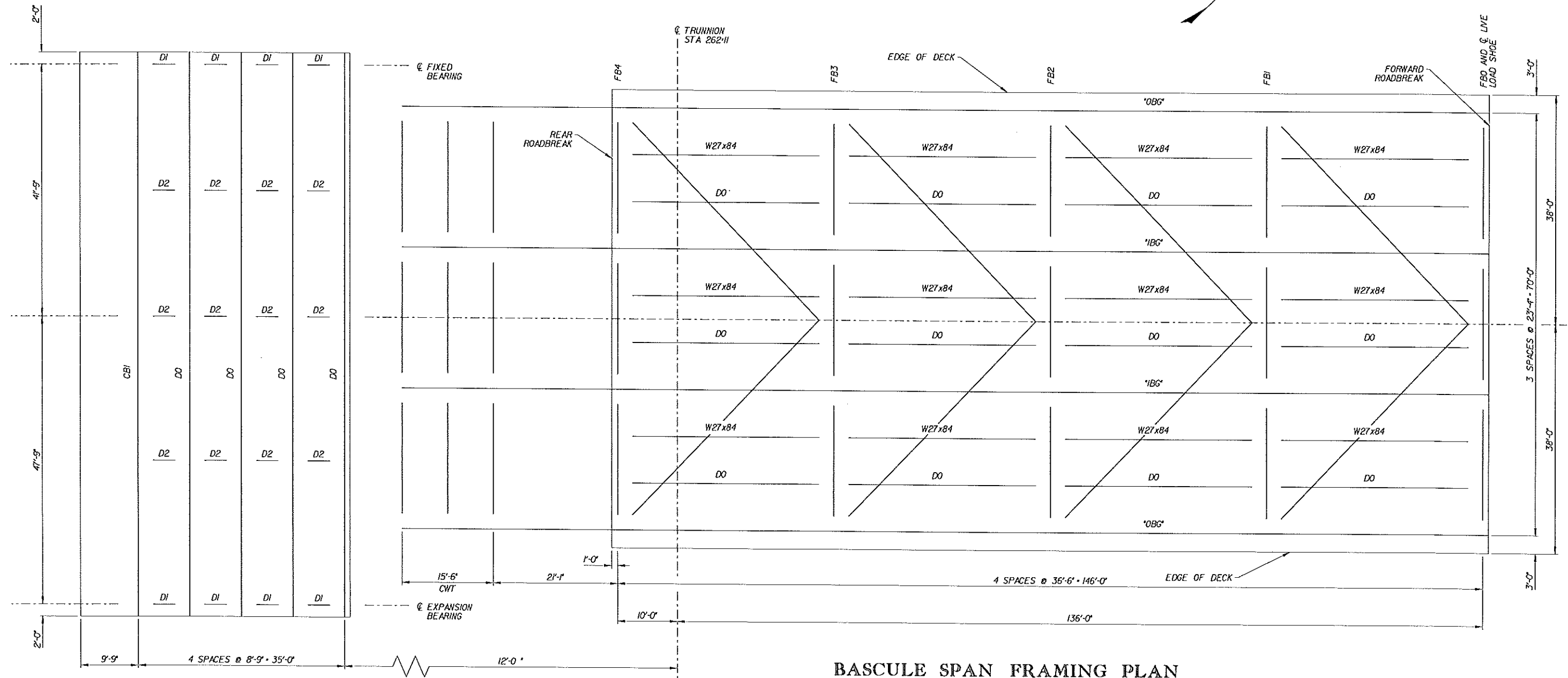
SOUTH CAROLINA
DEPARTMENT OF TRANSPORTATION

BASCULE ELEVATION

Triplet-King & Associates, Inc.
CONSULTING ENGINEERS
P.O. BOX 33
ROCK HILL, SOUTH CAROLINA 29151

HR
HDR Engineering, Inc.
of The Carolinas
200 West Park Drive, Suite 200
Charlotte, NC 28202

FILE NO.	ROUTE	COUNTY	DRAWING NO.
8.158B	SC 41	BERKELEY/CHARLESTON	B-02



COUNTERWEIGHT SPAN FRAMING PLAN

BASCULE SPAN FRAMING PLAN

REVISIONS DATES TIMES SHEETS

CONCEPTUAL PLANS FOR REVIEW
REV.
REV.
REV.
REVIEWED
QUAN.
DR. JSJ HFP 12-10
DES. CSP HFP 12-10
BY CHK. DATE

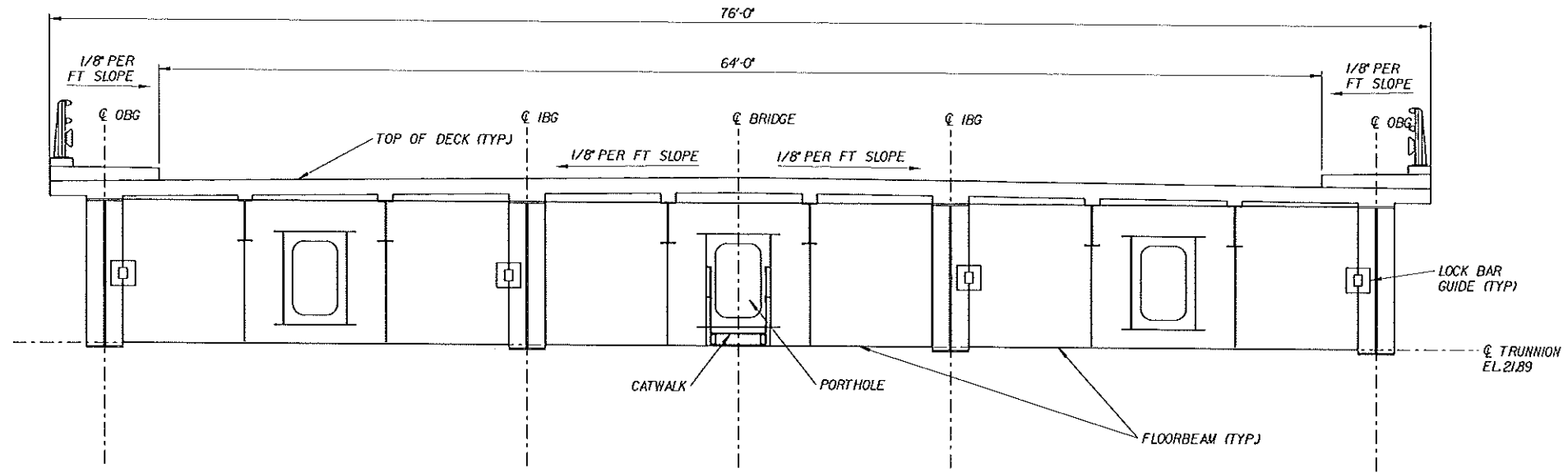
SOUTH CAROLINA DEPARTMENT OF TRANSPORTATION

BASCULE FRAMING PLAN

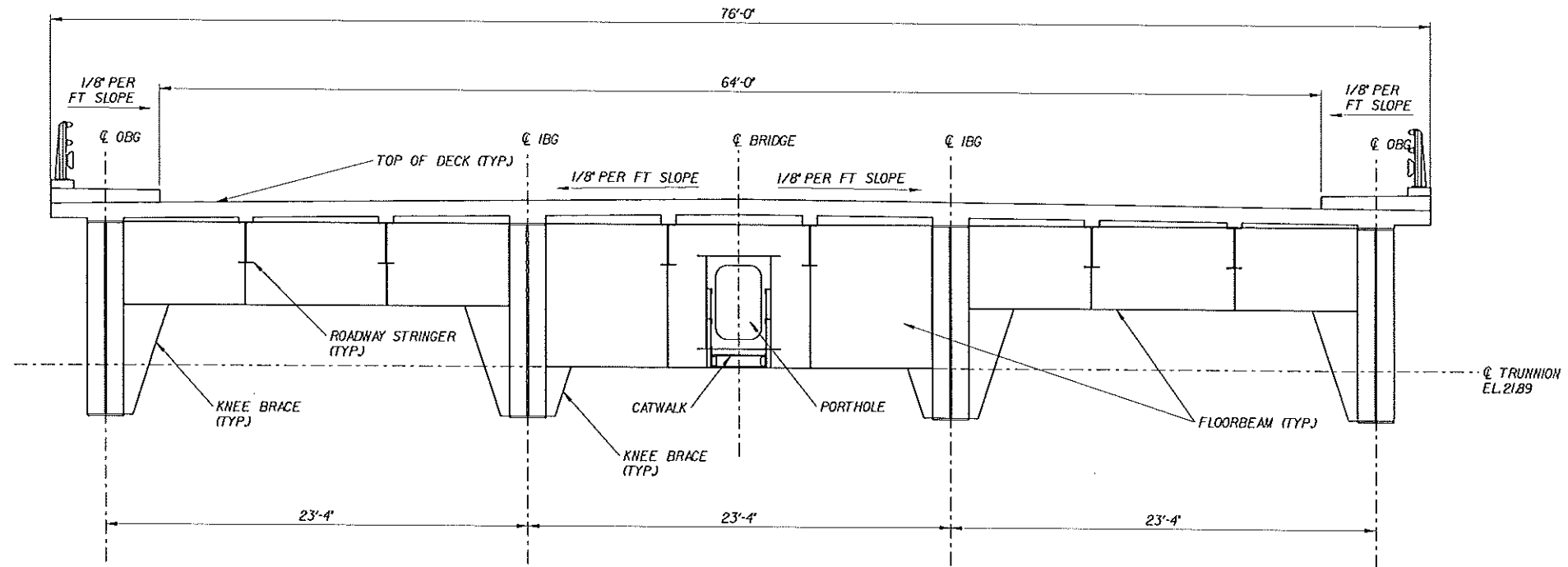
Triplitt-King B. Associates, Inc. CONSULTING ENGINEERS P.O. BOX 95 ROCK HILL, SOUTH CAROLINA 29731



FILE NO. 8.158B	ROUTE SC 41	COUNTY BERKELEY/CHARLESTON	DRAWING NO. B-03
-----------------	-------------	----------------------------	------------------



SECTION AT FB 0



SECTION AT FB 2

EISENBERG & ASSOCIATES STILES

CONCEPTUAL
PLANS FOR
REVIEW

REV.	
REV.	
REV.	
REVIEWED	
QUAN.	
DR.	JSJ HFP 12-10
DES.	CSP HFP 12-10
BY	CHE. DATE

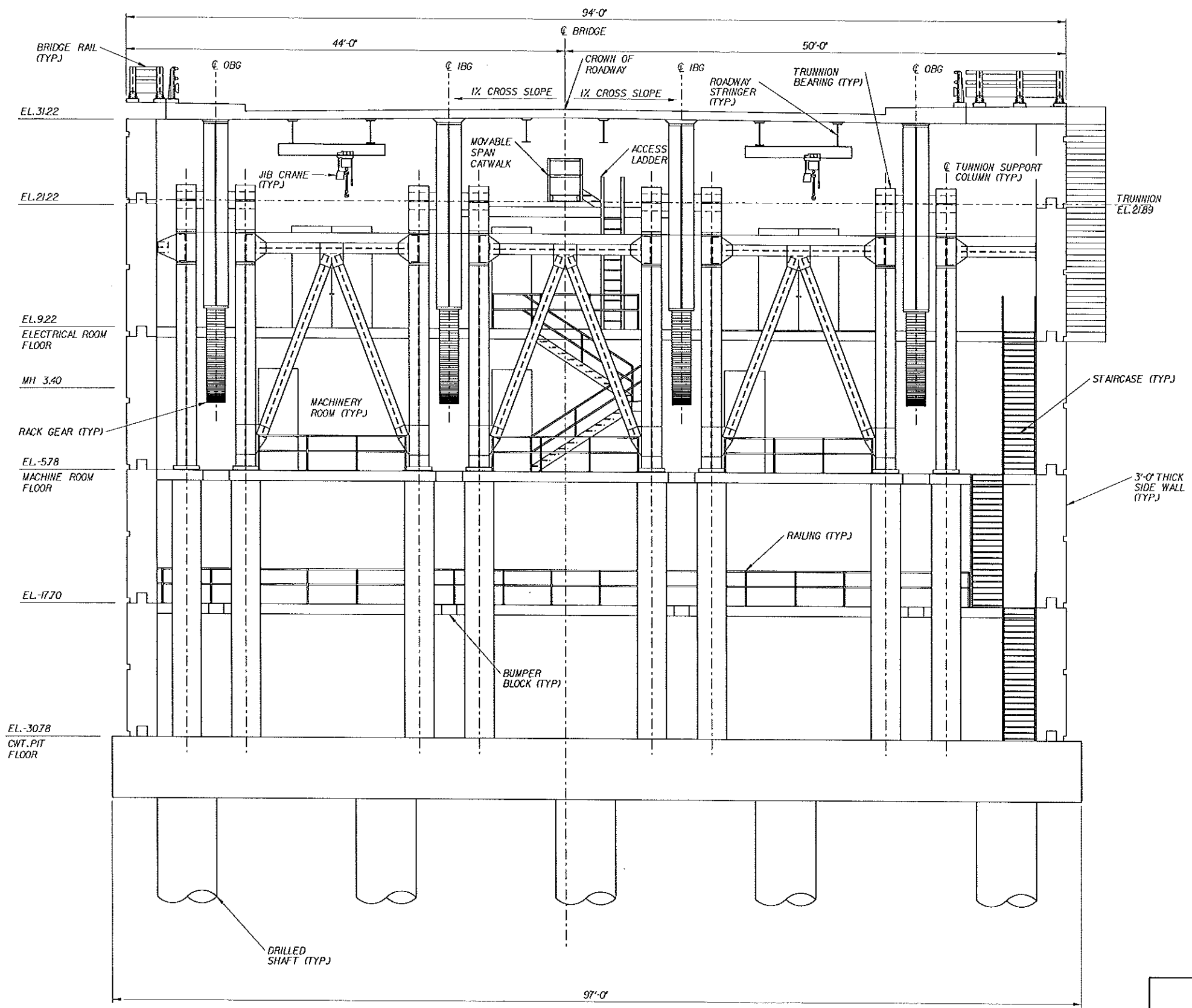
SOUTH CAROLINA
DEPARTMENT OF TRANSPORTATION

**BASCULE
TYPICAL SECTIONS**

HR
HDR Engineering, Inc.
of The Carolinas
205 FAY MILLER DR. BERKELEY, CA 94704

FILE NO.	ROUTE	COUNTY	DRAWING NO.
8.158B	SC 41	BERKELEY/CHARLESTON	B-04

SHEET NO.	TOTAL SHEETS



SECTION A-A: THROUGH PIER

SUBSEQUENT DATES STIMES STIPLES

CONCEPTUAL PLANS FOR REVIEW

REV.			
REV.			
REV.			
REVIEWED			
QUAN.			
DR.	JSJ	HFP	12-10
DES.	GPS	HFP	12-10
BY	CHK.	DATE	

SOUTH CAROLINA DEPARTMENT OF TRANSPORTATION

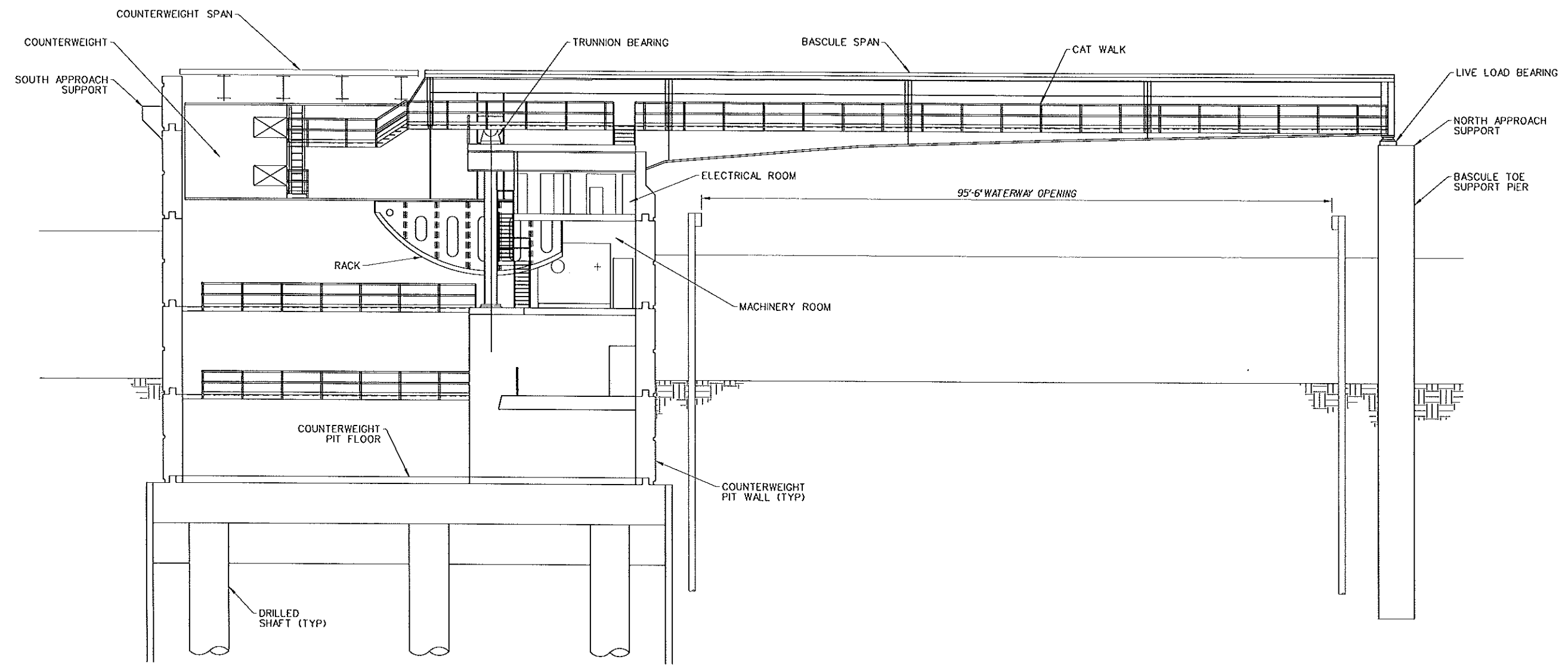
BASCULE PIER SECTION

Triplet-King & Associates, Inc. CONSULTING ENGINEERS

HR HDR Engineering, Inc. of the Carolinas

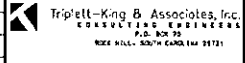

FILE NO.	ROUTE	COUNTY	DRAWING NO.
8.158B	SC 41	BERKELEY/CHARLESTON	B-05

SHEET NO.	TOTAL SHEETS

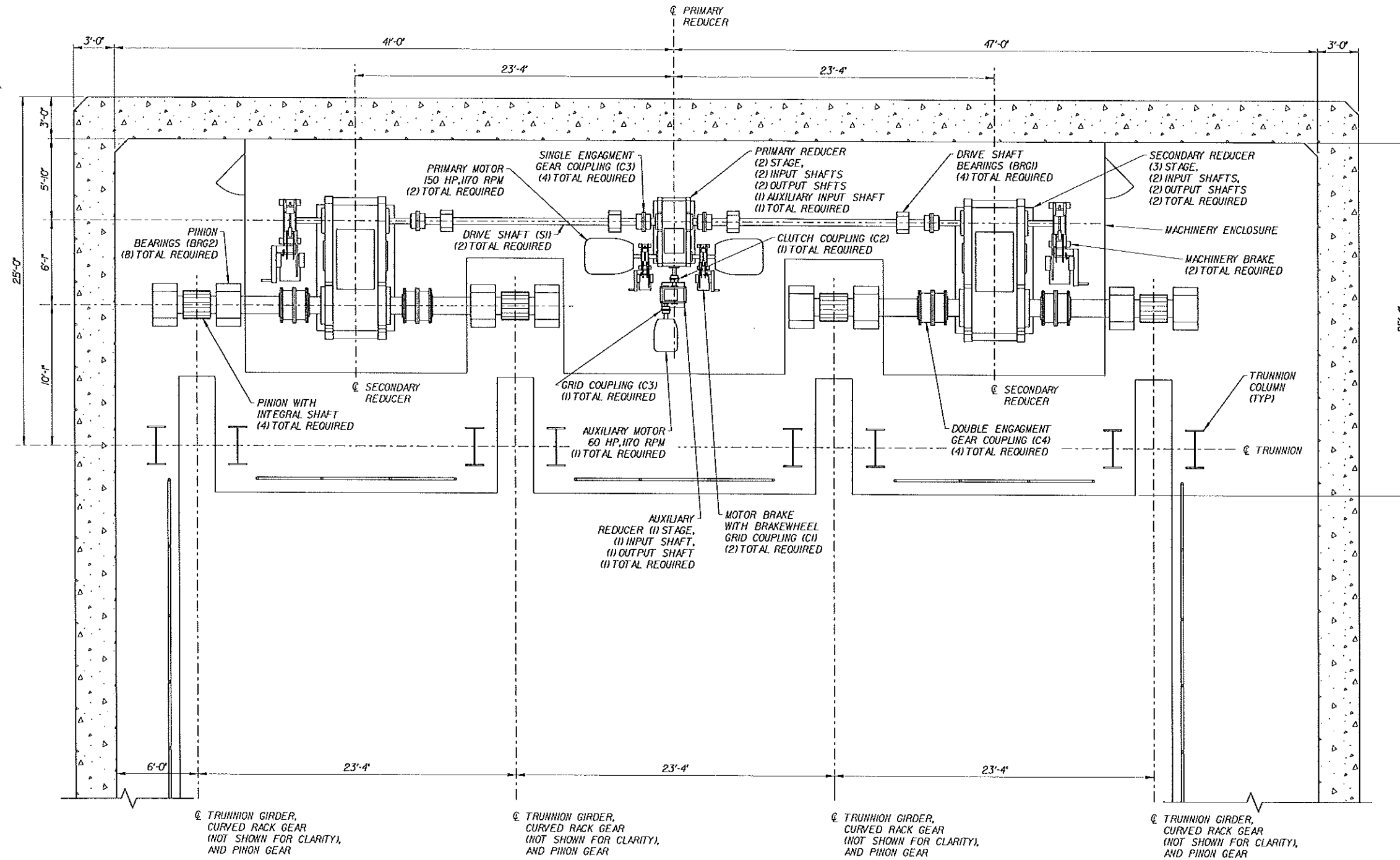


SECTION B-B: BASCULE LONGITUDINAL SECTION

SUBSEQUENT EDITS 5 TIMES 5 FILES

CONCEPTUAL PLANS FOR REVIEW		REV.		SOUTH CAROLINA DEPARTMENT OF TRANSPORTATION			
		REV.		BASCULE LONGITUDINAL SECTION			
		REV.					
		REVIEWED		FILE NO.	ROUTE	COUNTY	DRAWING NO.
QUAN.		8.158B	SC 41	BERKELEY/CHARLESTON	B-06		
DR.	JSJ HFP 12-10						
DES.	XVC HFP 12-10						
BY	CHK. DATE						

SHEET NO.	TOTAL SHEETS



MACHINERY ROOM LAYOUT - PLAN

EUSERNAMES: SDATES 3TIMES 3FILES

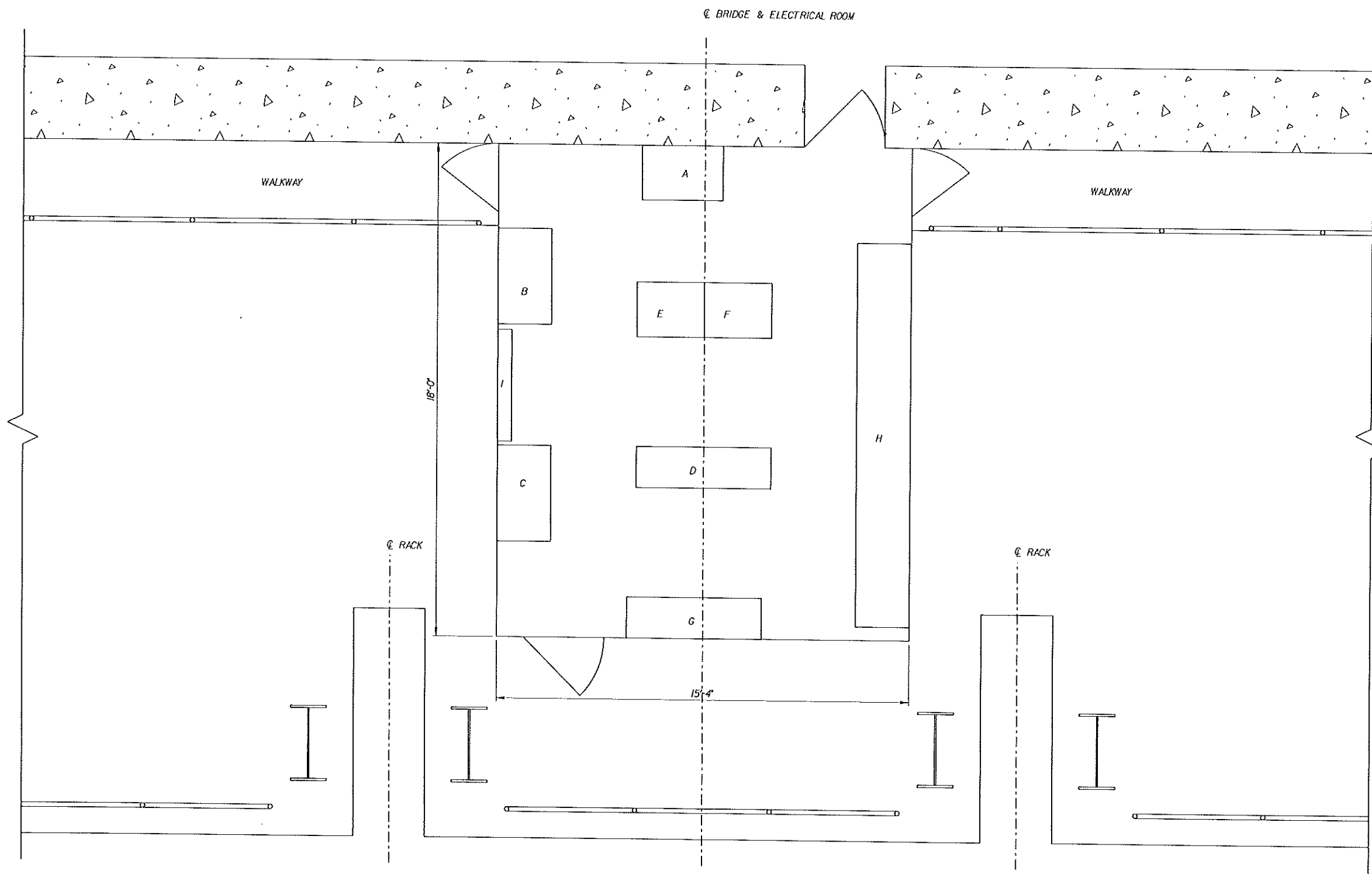
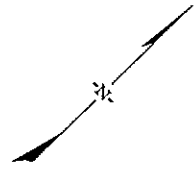
CONCEPTUAL
PLANS FOR
REVIEW

REV.			
REV.			
REV.			
REVIEWED			
QUAN.			
DR.	JSJ	HFP	12-10
DES.	KWC	HFP	12-10
BY	CHE	DATE	

SOUTH CAROLINA
DEPARTMENT OF TRANSPORTATION

MACHINERY ROOM
LAYOUT

FILE NO.	ROUTE	COUNTY	DRAWING NO.
8.158B	SC 41	BERKELEY/CHARLESTON	B-07



MARK	DESCRIPTION / DIMENSIONS
A	AUXILLARY DRIVE - 24" DEEP x 42" WIDE x 72" HIGH
B	MAIN DRIVE - 24" DEEP x 42" WIDE x 72" HIGH
C	MAIN DRIVE - 24" DEEP x 42" WIDE x 72" HIGH
D	RELAY CABINET - 18" DEEP x 60" WIDE x 72" HIGH
E	RESISTOR CABINET - 24" DEEP x 30" WIDE x 48" HIGH
F	RESISTOR CABINET - 24" DEEP x 30" WIDE x 48" HIGH
G	RELAY CABINET - 18" DEEP x 60" WIDE x 72" HIGH
H	MCC - 24" DEEP x 168" WIDE x 96" HIGH
I	CCTV MONITOR

ELECTRICAL ROOM LAYOUT - PLAN (EL 9.22)

CONCEPTUAL
PLANS FOR
REVIEW

REV.	
REV.	
REV.	
REVIEWED	
QUAN.	
DR.	JSJ HFP 12-10
DES.	KH HFP 12-10
BY	CHK. DATE

SOUTH CAROLINA
DEPARTMENT OF TRANSPORTATION

**ELECTRICAL ROOM
LAYOUT**

Triplet-King & Associates, Inc.
CONSULTING ENGINEERS
P.O. BOX 30
8004 WILSON ROAD, SUITE 100
GREENVILLE, SC 29615

HR
HDR Engineering, Inc.
of the Carolinas
300 / 1st Floor, S.W. 10th St.
MIAMI, FL 33135

FILE NO.	ROUTE	COUNTY	DRAWING NO.
8.158B	SC 41	BERKELEY/CHARLESTON	B-09

USERNAMES & DATES