

Plan Preparation Guide

Chapter 14

Railroad Information

Section	Description	Page
1	<u>Railroad Information</u>	14-1
2	<u>Railroad Grade Separation</u>	14-1
3	<u>Prints to Utilities</u>	14-2
4	<u>Examples</u>	14-3

1. Railroad Information

Railroads shall be plotted in detail showing mileposts, right-of-way, and existing and new drainage. Rail elevations are to be shown on the profile sheet. The minimum distance a drainage pipe will be placed is 20 L.F. from the centerline of the railroad in a parallel ditch. Also, the minimum size pipe structured shall be no less than 24" in diameter. New pipe being placed under the railroad will be 24" Minimum Diameter, 36" for Norfolk Southern, Pipe Culvert Class V. (See sheet 14-3 for example)

2. Railroad Grade Separations

At railroad grade separations, a profile is necessary on the survey centerline beneath the bridge. A traverse on the centerline of the railroad 200' left and 200' right (minimum) of survey centerline with appropriate topography is also required.

Additional information needed by the railroads is cross-sections perpendicular to the track. If these cross-sections are omitted from the survey, contact the appropriate Engineer as soon as possible.

The above-mentioned sections should be plotted on cross-section paper to the largest horizontal scale that will accommodate the entire railroad right-of-way. The topography of the traverse should be plotted on the mainline plan sheet. No profile of the railroad traverse will be necessary. The cross-sections should be plotted normally (displayed graphic horizontal and vertical scale) with the sheet being clearly labeled under the box. This sheet is for railroad use only, not to be included in our plans, and should be given the Bridge Design for submittals and appropriate railroad for their preliminary review along with bridge plans.

Cross-sections are required every 25' within the railroad right-of-way within 100' each side of survey centerline. Beyond 100' of centerline, elevations on the top of rails are necessary (See sheet 14-4 for an example)

Also, the railroad requests we indicate our roadway fill slope on the three interior cross-sections.

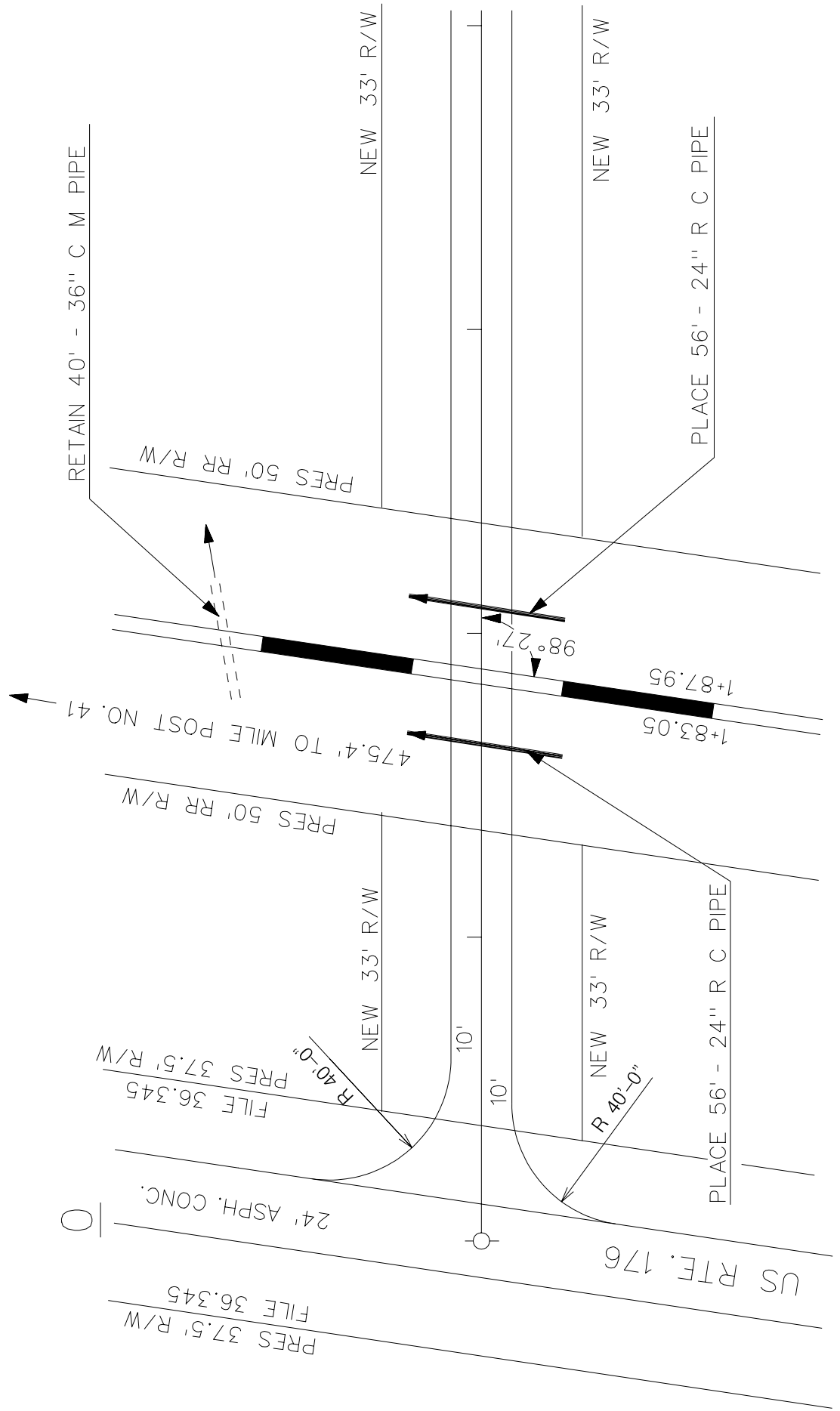
3. Prints to Utilities

When Field Review prints are returned to a Road Design Group by the Project Manager, the Road Design Group will check the Field Review Title Sheet for the designation of railroad involvement. A note has been added to this sheet to note "Railroad Involvement". If there is "Railroad Involvement", it shall be noted on the Title Sheet.

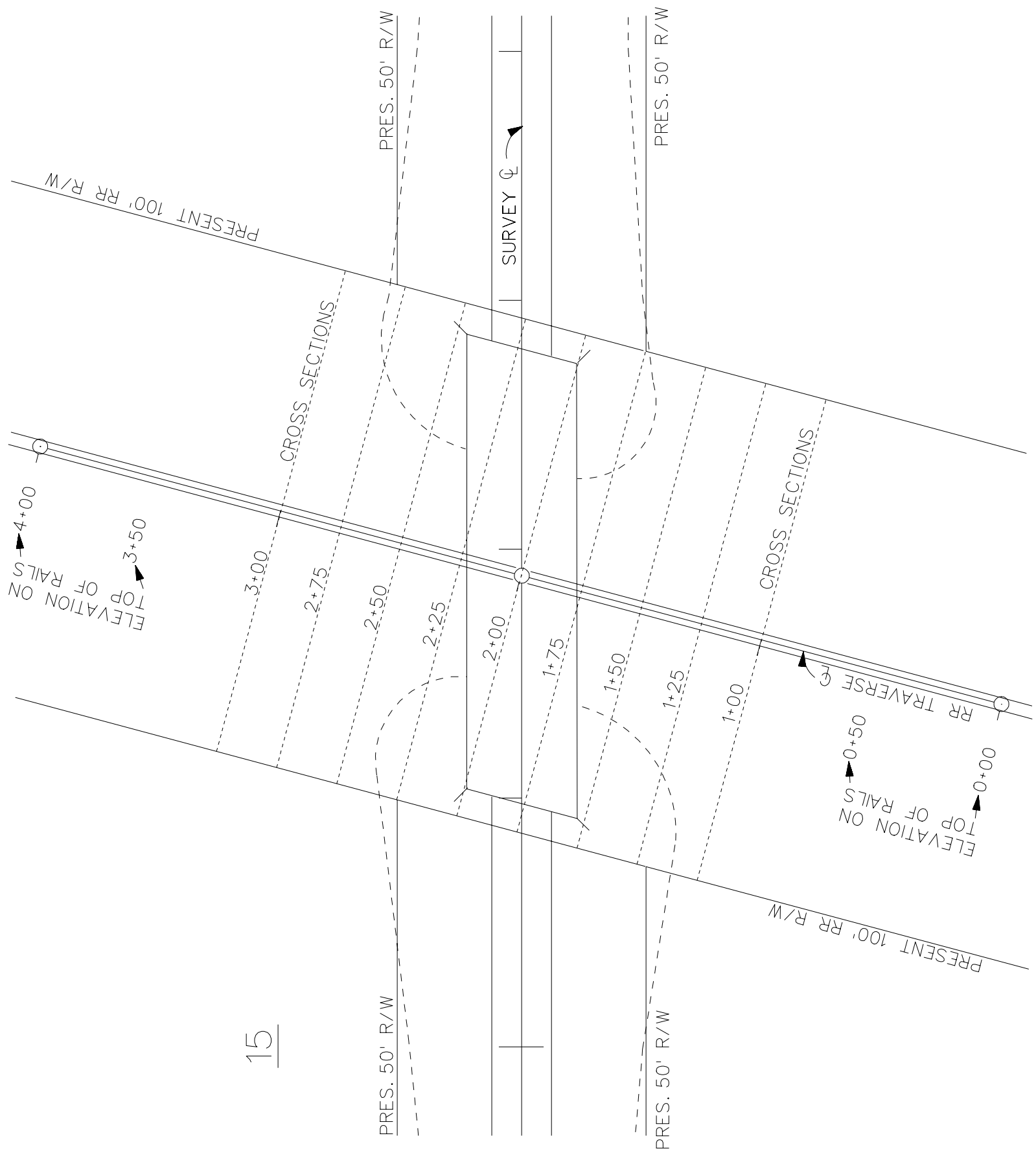
If the Title Sheet does not reveal railroad involvement, the Road Design Group should thoroughly review the plans for any encroachment on railroad right-of-way.

When there is railroad involvement, plans will be sent to the Utilities Office in accordance with Engineering Directive Memorandum PC-22. Road Design Groups will provide revised plans to the Operations Center for distribution to the Utilities Office for any subsequent changes to plans affecting the railroad right-of-way.

EXAMPLE OF RAILROAD INFORMATION



EXAMPLE OF RAILROAD INFORMATION



15