

INDEX OF SHEETS

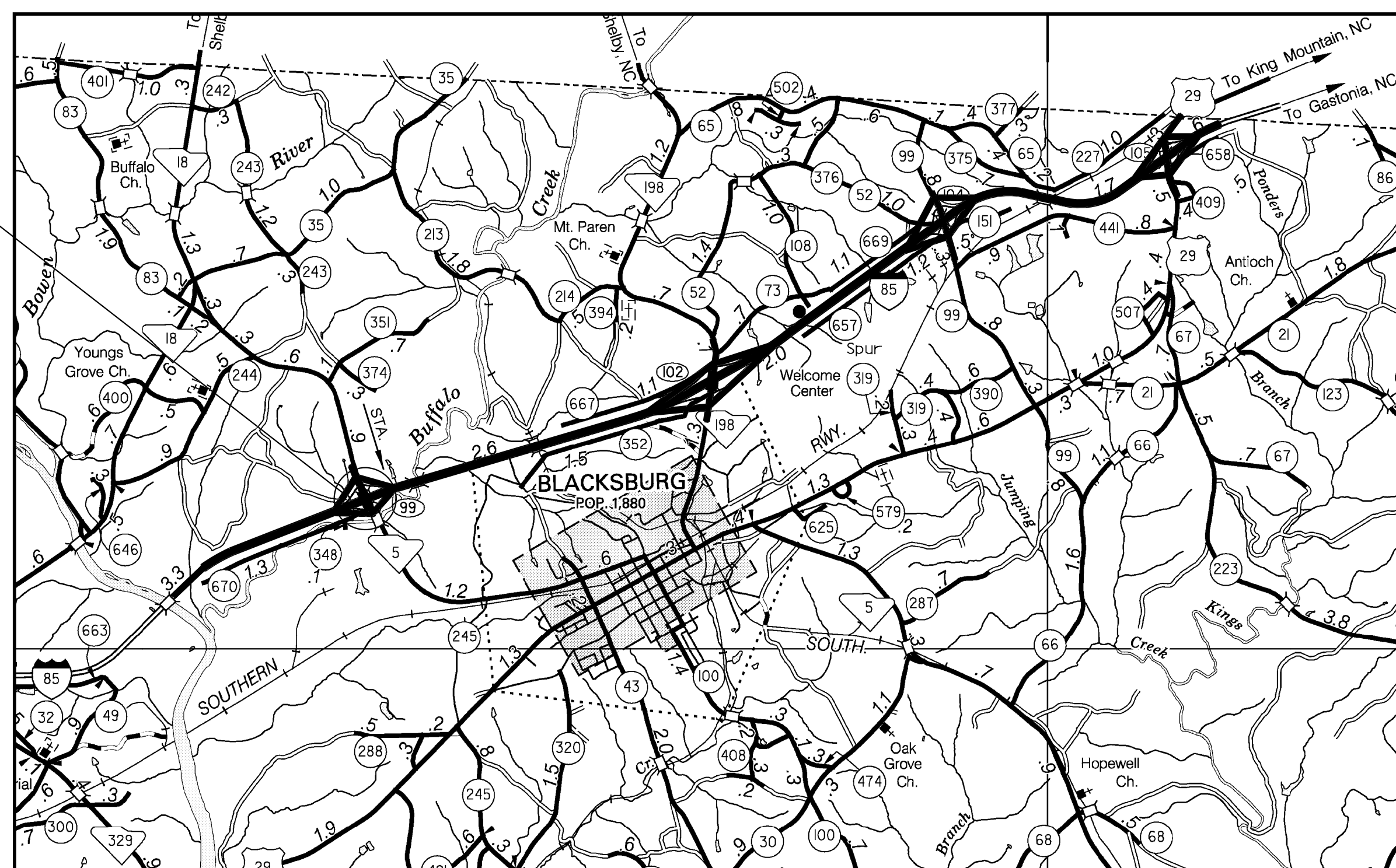
1. TITLE SHEET
2. STAGES OF CONSTRUCTION
3. BRIDGE PLAN AND PROFILE
4. TYPICAL SECTION



South Carolina Department of Transportation

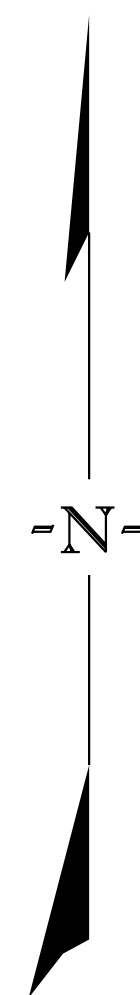
# PROPOSED PLANS FOR CHEROKEE COUNTY PROJECT ID P027116 ROAD S-83 (BLACKSBURG HWY.) REPLACE BRIDGE OVER I-85

CONSTRUCT 172'-0" (R.C. DECK AND PRESTRESSED BEAMS)  
BRIDGE FROM STA. 49+13.68 TO STA. 50+85.68  
ALONG PROPOSED  $\phi$  RELOCATED S-83  
(BLACKSBURG HWY.)



LAYOUT

Approximate Location of Bridge is  
Latitude 35° - 07' - 43"  
Longitude 81° - 33' - 05"



3 DAYS BEFORE DIGGING IN  
SOUTH CAROLINA  
**CALL 811**  
SOUTH CAROLINA 811 (SC811)  
WWW.SC811.COM  
ALL UTILITIES MAY NOT BE A MEMBER OF SC811

ASSET ID XXXX

TRAFFIC DATA			
2015	ADT	4,300	V.P.D.
2040	ADT	7,000	V.P.D.
	TRUCKS	30	%

NET LENGTH OF ROADWAY	0.000	MILES
NET LENGTH OF BRIDGES	0.032	MILES
NET LENGTH OF PROJECT	0.032	MILES
LENGTH OF EXCEPTIONS	0.000	MILES
GROSS LENGTH OF PROJECT	0.032	MILES

NOTE: EXCEPT AS MAY OTHERWISE BE SPECIFIED ON THE PLANS OR IN THE SPECIAL PROVISIONS, ALL MATERIALS AND WORKMANSHIP ON THIS PROJECT SHALL CONFORM TO THE SOUTH CAROLINA DEPARTMENT OF TRANSPORTATION STANDARD SPECIFICATIONS FOR HIGHWAY CONSTRUCTION (2007 EDITION) AND THE STANDARD DRAWINGS FOR ROAD CONSTRUCTION IN EFFECT AT THE TIME OF FINAL RFP.

CONSULTING ENGINEERING FIRM

ENGINEER OF RECORD

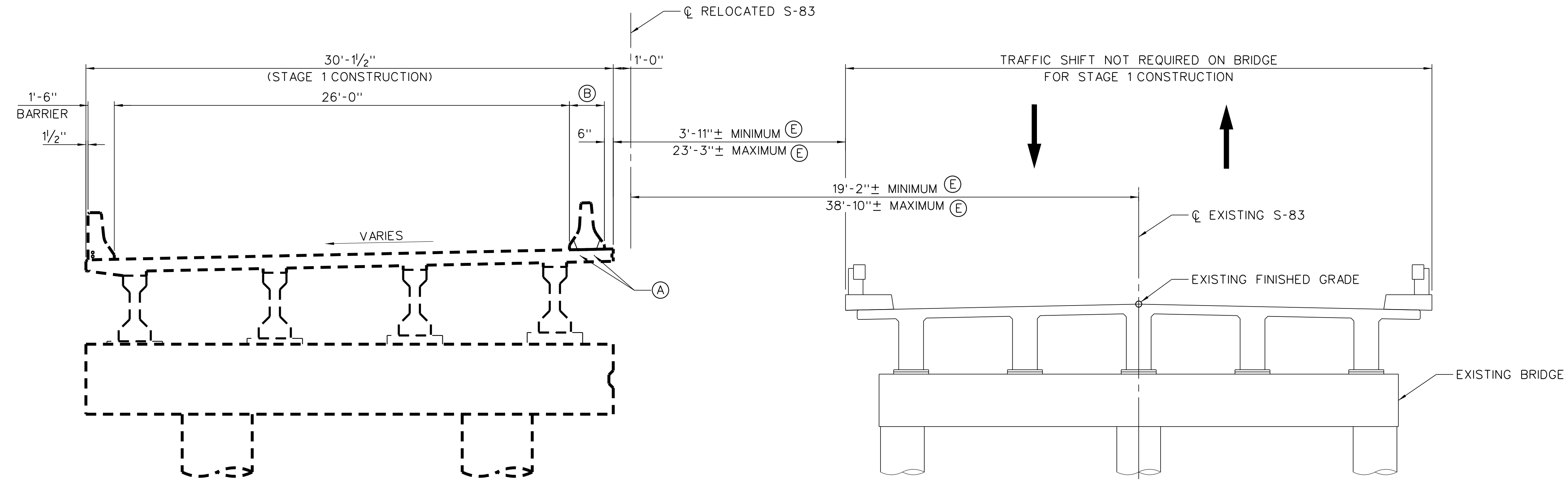
**CONCEPT PLANS NOT FOR CONSTRUCTION**

FOR CONSTRUCTION : \_\_\_\_\_ DATE \_\_\_\_\_

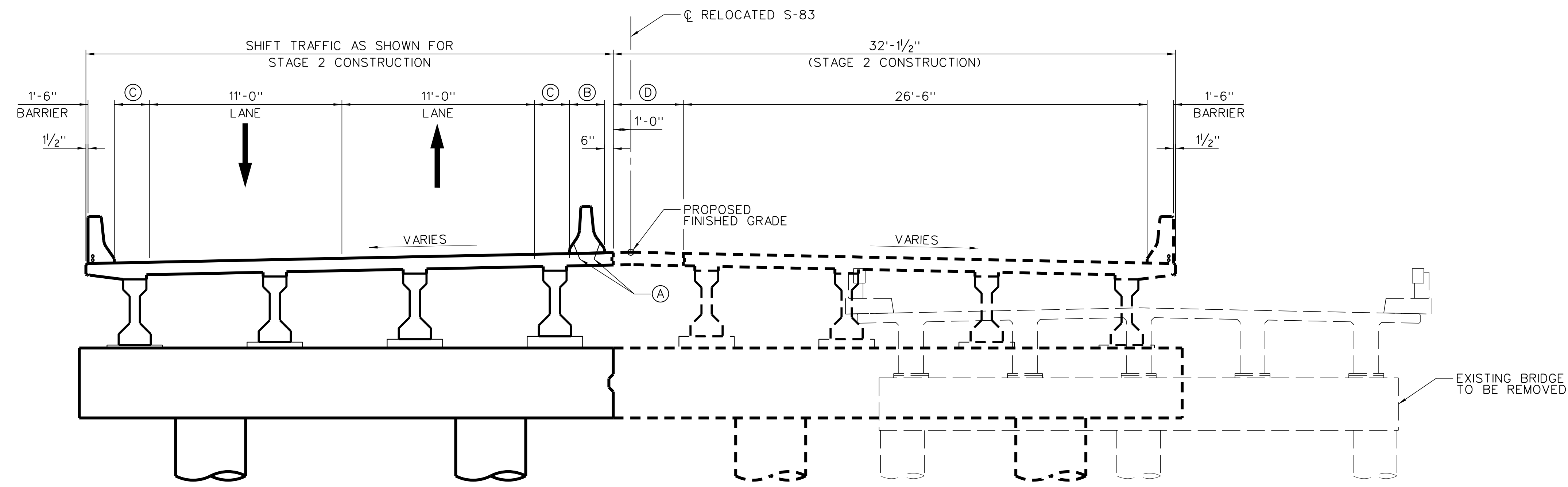
REVIEWED	DR.	BY	CHK	DATE

NOTES:

- (A) ANCHOR TO FASTEN TEMPORARY CONCRETE MEDIAN BARRIER TO BRIDGE DECK
- (B) 2'-0" WIDE TEMPORARY CONCRETE MEDIAN BARRIER
- (C) 2'-0" WIDE SHOULDER
- (D) 4'-0" WIDE CLOSURE POUR
- (E) MEASURED PERPENDICULAR TO  $\text{CL}$  RELOCATED S-83



STAGE 1 CONSTRUCTION

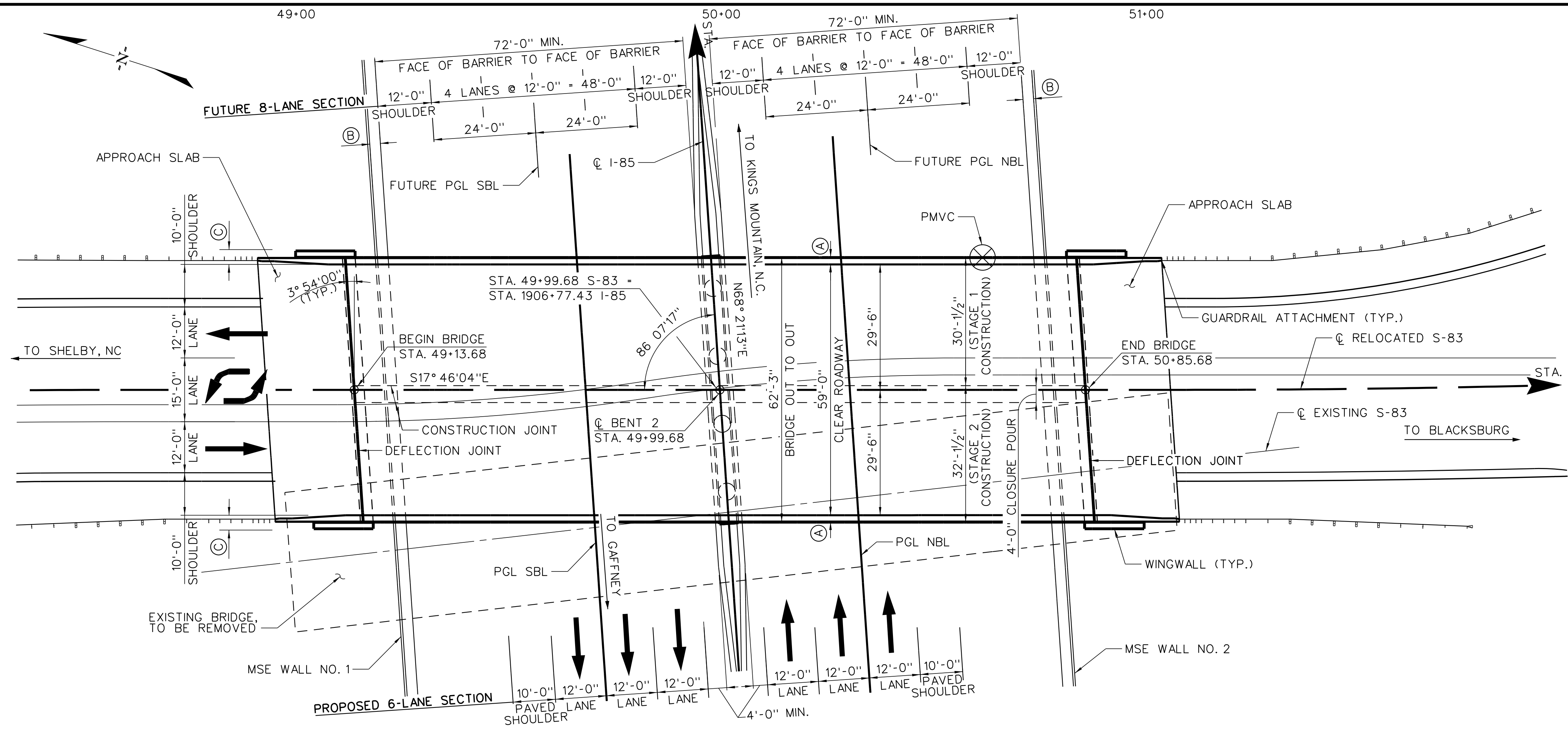


STAGE 2 CONSTRUCTION

REV.			
REV.			
REV.			
REVIEWED			
QUAN.	---	---	---
DR.	RGD	ASC	5-17
DES.	---	---	---
BY	CHK.	DATE	

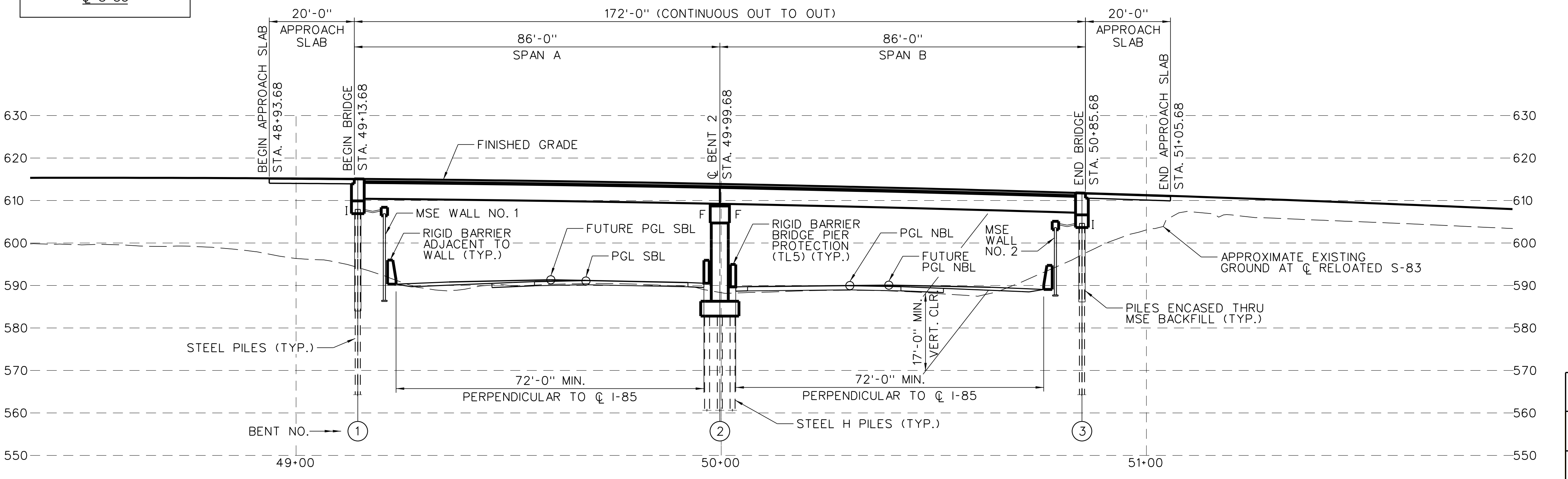
CONCEPT PLANS	<b>HR ICA</b>	
	ICA Engineering Inc. 1122 Lady Street, Suite 1100, Columbia, SC 29201	
NOT FOR CONSTRUCTION	SOUTH CAROLINA DEPARTMENT OF TRANSPORTATION	
	<b>STAGES OF CONSTRUCTION BLACKSBURG HWY. REPLACE BRIDGE OVER I-85</b>	
	COUNTY CHEROKEE	ROUTE S-83

- NOTES:
- LIVE LOAD = HL-93 LOADING IN ACCORDANCE WITH AASHTO LRFD BRIDGE DESIGN SPECIFICATIONS.
  - SUPERSTRUCTURE IS A COMPOSITE SPAN WITH TYPE III PRESTRESSED CONCRETE BEAM AND REINFORCED CONCRETE DECK.
  - ELEVATIONS ARE SHOWN IN FEET (FT.).
  - U.N.O. - DENOTES UNLESS NOTED OTHERWISE.
  - PMVC - DENOTES POINT OF MINIMUM VERTICAL CLEARANCE
  - ← - DIRECTION OF TRAFFIC
  - UTILITY COORDINATION IS ONGOING.
  - TEMPORARY SHORING FOR CONSTRUCTION OF BRIDGE AND MSE WALL WILL BE REQUIRED.
  - (A) 1'-7/2" INCLUDES 1'-6" RAILING WALL AND 1/2" DECK EXTENSION.
  - (B) 2'-6" INCLUDES 2'-0" RIGID BARRIER AND 6" BACKFILL.
  - (C) ADDITIONAL 3'-6" ADDED TO SHOULDER DUE TO PRESENCE OF GUARDRAIL, SEE ROADWAY PLANS.



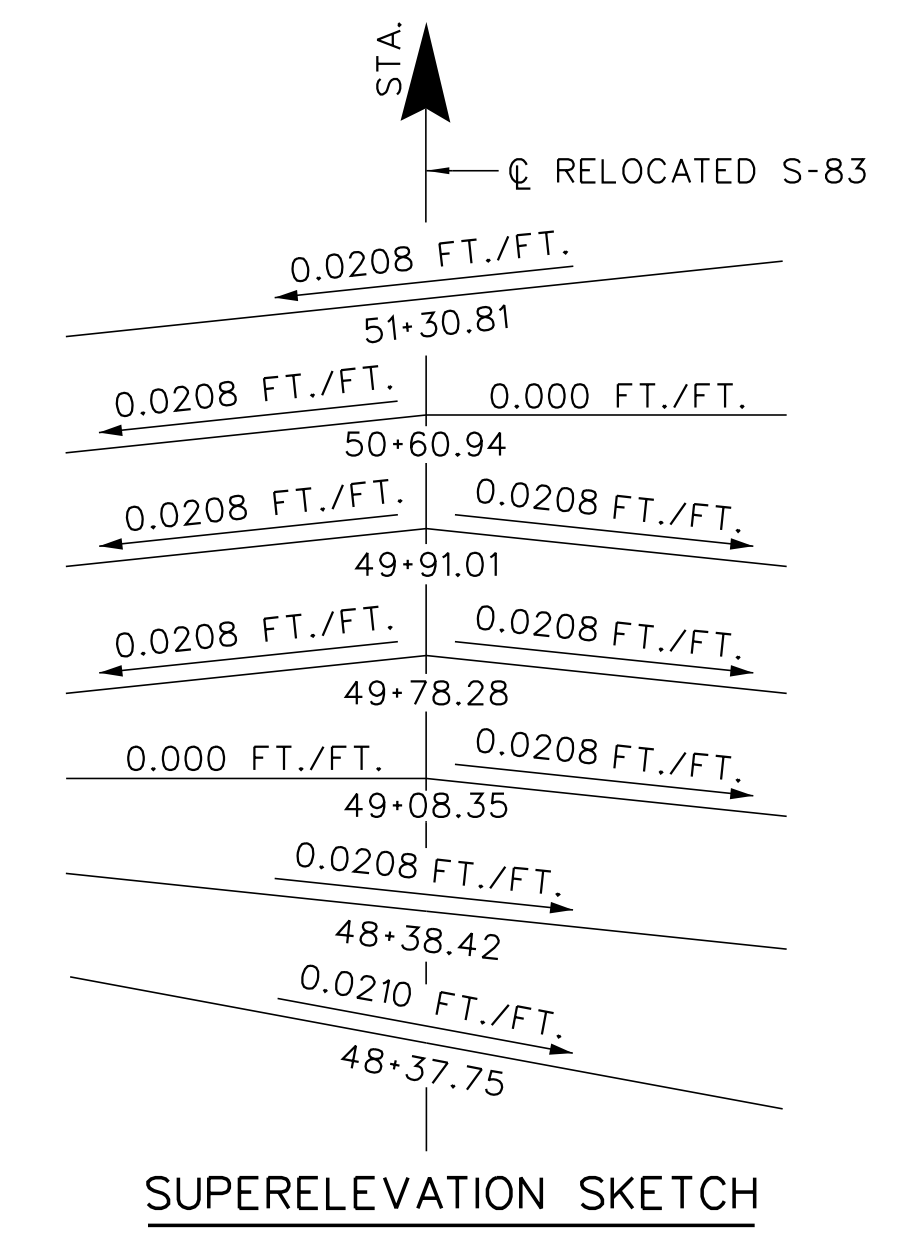
+0.52%  $\Delta$  -4.44%  
 PVI = 50+00.00  
 ELEV. = 616.25  
 V.C. = 380'  
 @ S-83

PLAN



SECTION ALONG @ RELOCATED S-83

I - DENOTES INTEGRAL  
 F - DENOTES FIXED  
 BARRIER PARAPET NOT SHOWN FOR CLARITY.



SUPERELEVATION SKETCH

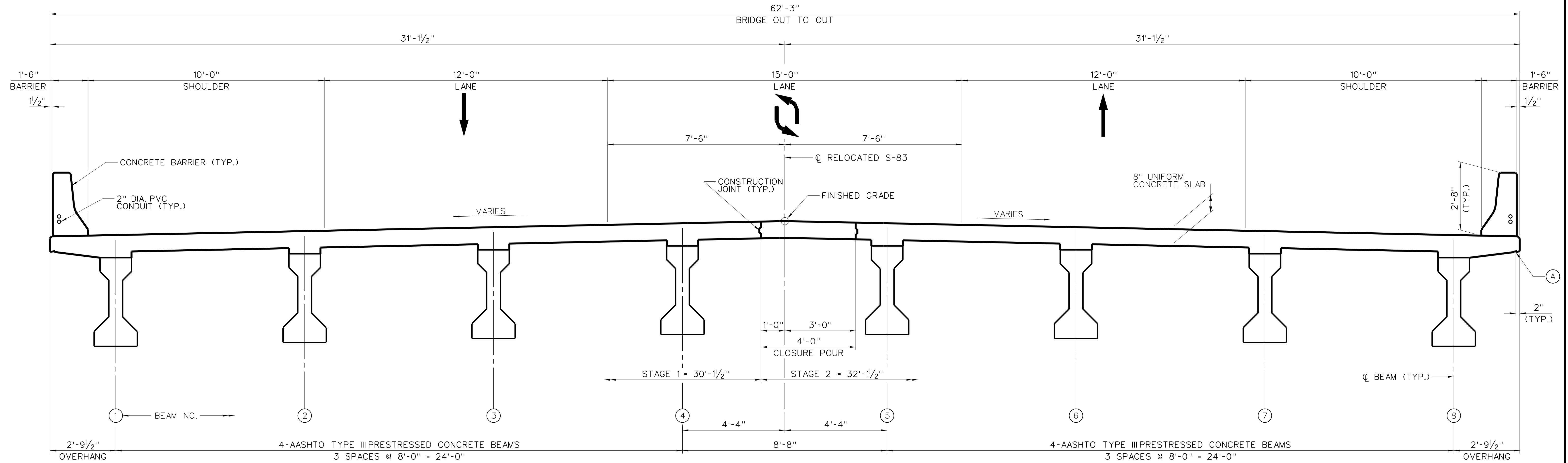
REV.			
REV.			
REV.			
REVIEWED	QUAN.	---	---
DR.	RGD	ASC	5-17
DES.	---	---	---
BY	CHK.	DATE	

CONCEPT PLANS	 ICA Engineering Inc. 1122 Lady Street, Suite 1100, Columbia, SC 29201	
NOT FOR CONSTRUCTION	BRIDGE PLAN AND PROFILE BLACKSBURG HWY. REPLACE BRIDGE OVER I-85	
	COUNTY CHEROKEE	ROUTE S-83

CADD FILE INFORMATION \$TIMES  
 PLOTTED DATE: 5/11/2017  
 FILE NAME: L:\256026\_185-Cherokee\_County\Bridges\100\Bgn\_Concept\Sheets\EXIT100\_03\_bp.dgn



NOTES:  
 (A) 3/4" DRIP GROOVE ENTIRE LENGTH OF BRIDGE (TYP. EACH SIDE)



TYPICAL DECK SECTION  
 (LOOKING IN DIRECTION OF STATIONING)

REV.			
REV.			
REV.			
REVIEWED			
QUAN.	---	---	---
DR.	RGD	ASC	5-17
DES.	---	---	---
BY	CHK.	DATE	

CONCEPT PLANS		
	ICA Engineering Inc. 1122 Lady Street, Suite 1100, Columbia, SC 29201	
NOT FOR CONSTRUCTION	SOUTH CAROLINA DEPARTMENT OF TRANSPORTATION	
	<b>TYPICAL SECTION          BLACKSBURG HWY.          REPLACE BRIDGE OVER I-85</b>	
	COUNTY CHEROKEE	ROUTE S-83

CADD FILE INFORMATION \$TIMES  
 PLOTTED DATE: 5/11/2017  
 FILE NAME: L:\256026\_185-Cherokees\_County\Bridges\Bridges\100\09n\_Concept\Sheets\EXIT100\_04\_ss.dgn