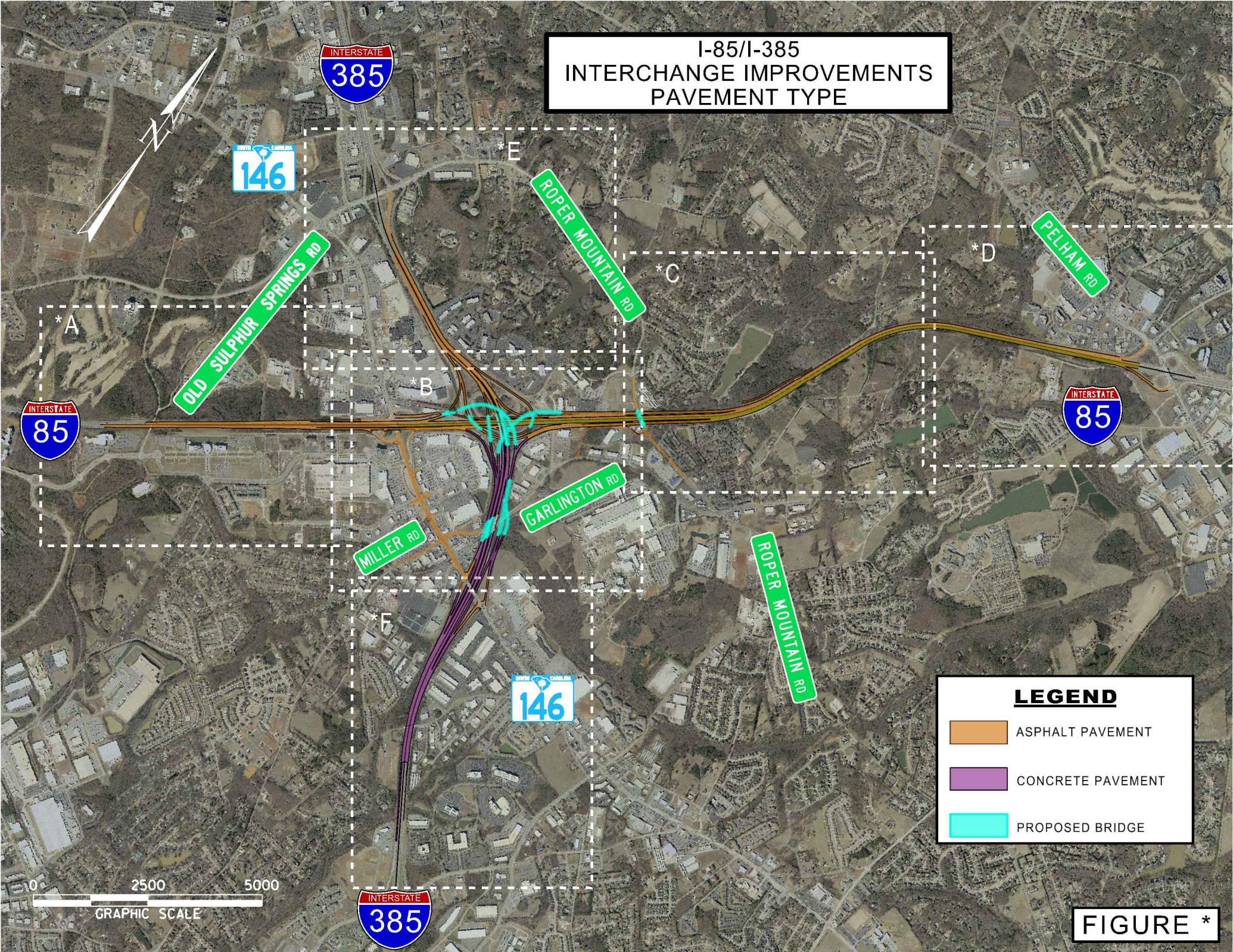


# I-85/I-385 INTERCHANGE IMPROVEMENTS PAVEMENT TYPE

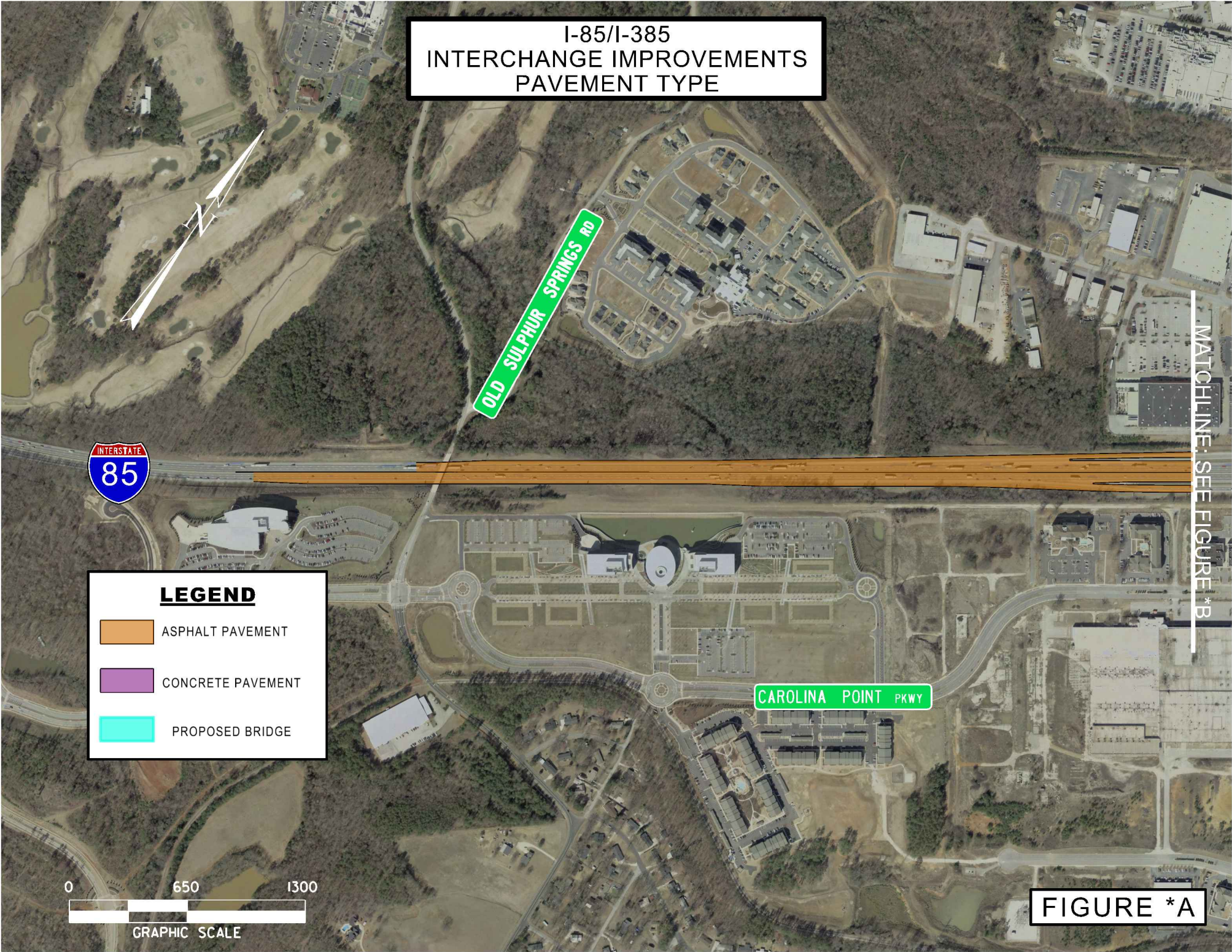


**LEGEND**

- ASPHALT PAVEMENT
- CONCRETE PAVEMENT
- PROPOSED BRIDGE

**FIGURE \***

I-85/I-385  
INTERCHANGE IMPROVEMENTS  
PAVEMENT TYPE



MATCHLINE: SEE FIGURE \*B

**LEGEND**

- ASPHALT PAVEMENT
- CONCRETE PAVEMENT
- PROPOSED BRIDGE



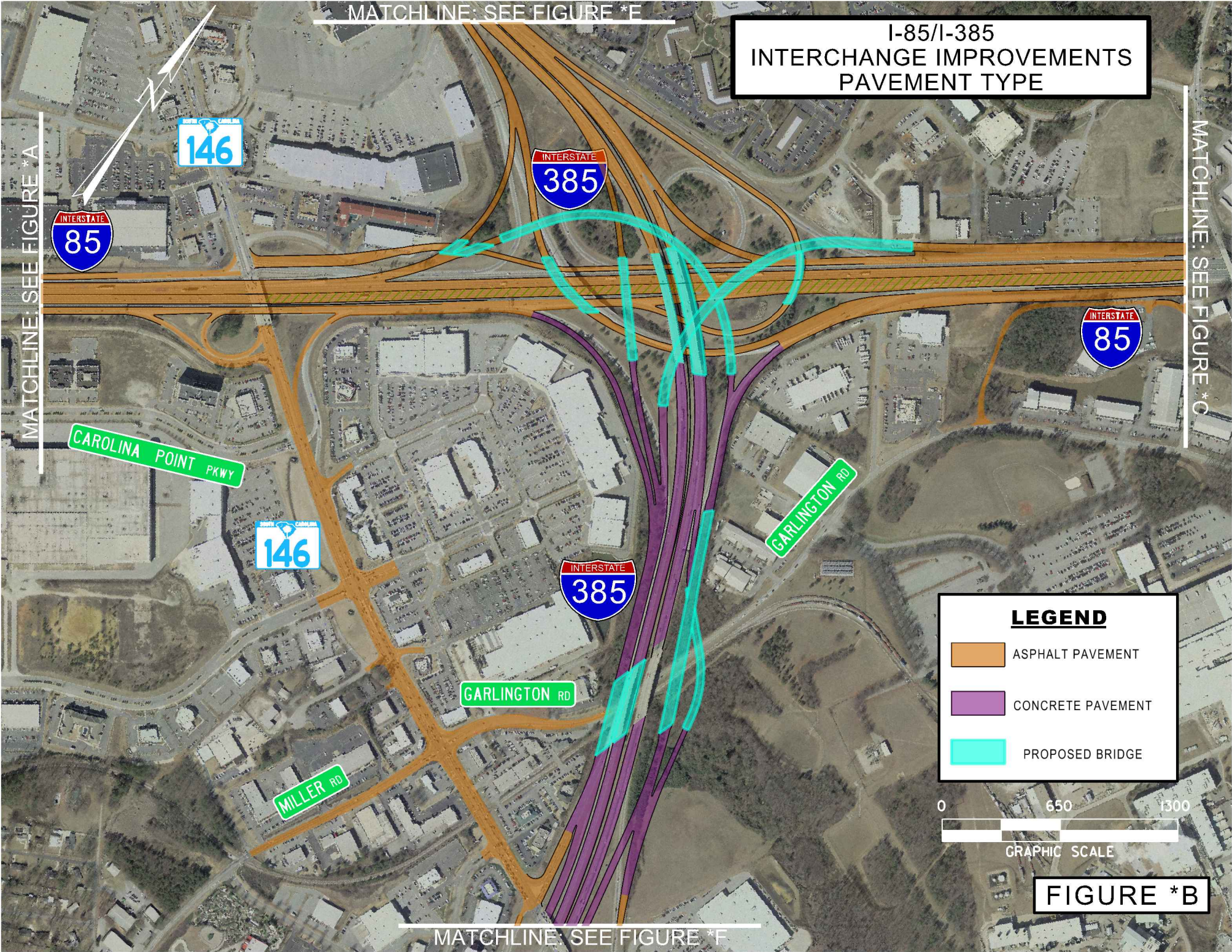
FIGURE \*A

MATCHLINE: SEE FIGURE \*E

# I-85/I-385 INTERCHANGE IMPROVEMENTS PAVEMENT TYPE

MATCHLINE: SEE FIGURE \*A

MATCHLINE: SEE FIGURE \*C



**LEGEND**

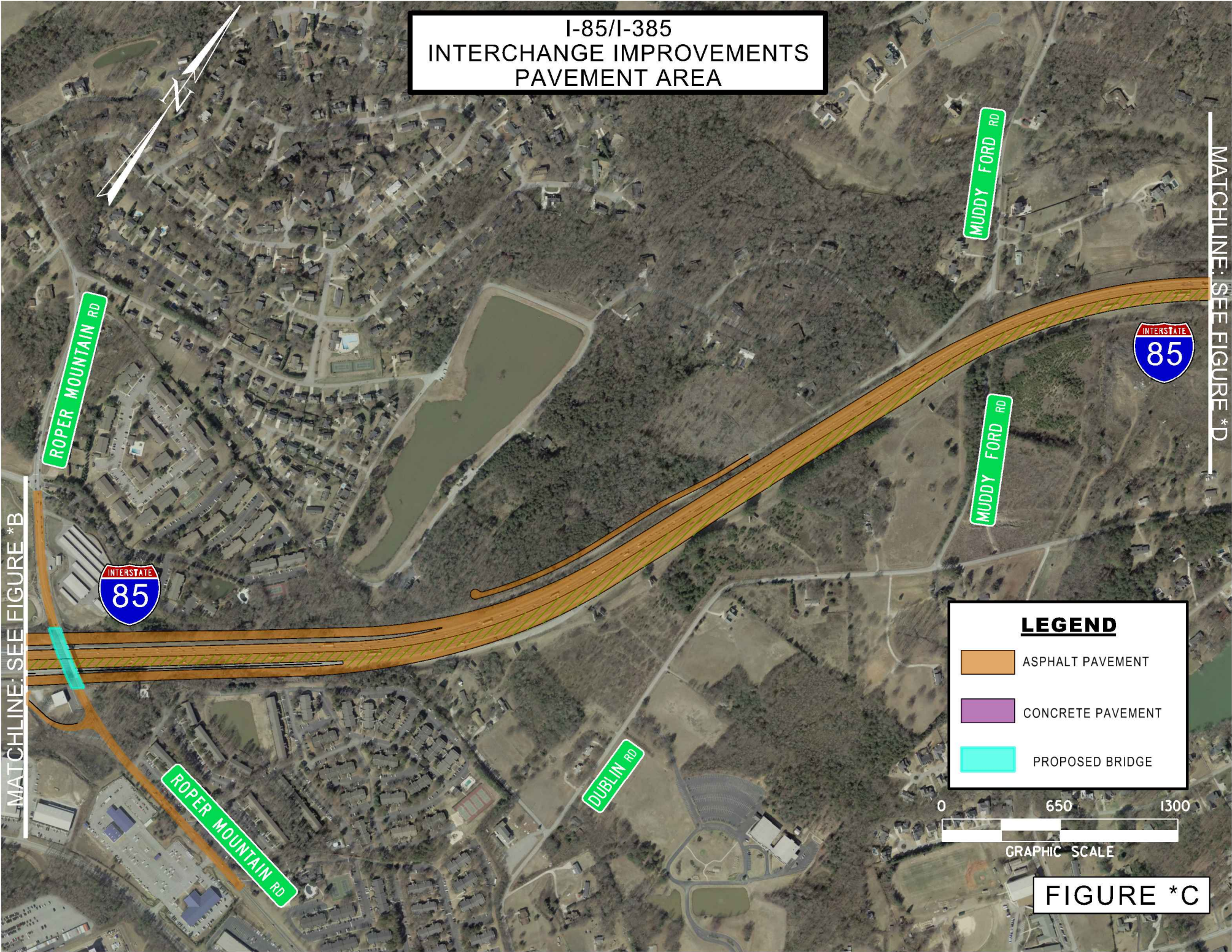
- ASPHALT PAVEMENT
- CONCRETE PAVEMENT
- PROPOSED BRIDGE



**FIGURE \*B**

MATCHLINE: SEE FIGURE \*F

I-85/I-385  
INTERCHANGE IMPROVEMENTS  
PAVEMENT AREA



MATCHLINE: SEE FIGURE \*B

MATCHLINE: SEE FIGURE \*D

**LEGEND**

- ASPHALT PAVEMENT
- CONCRETE PAVEMENT
- PROPOSED BRIDGE



FIGURE \*C

I-85/I-385  
INTERCHANGE IMPROVEMENTS  
PAVEMENT TYPE

MATCHLINE: SEE FIGURE \*C



PELHAM RD



**LEGEND**

- ASPHALT PAVEMENT
- CONCRETE PAVEMENT
- PROPOSED BRIDGE



FIGURE \*D

I-85/I-385  
INTERCHANGE IMPROVEMENTS  
PAVEMENT TYPE



ROPER MOUNTAIN RD

ROPER MOUNTAIN RD

INTERSTATE  
385

SOUTH CAROLINA  
146

INTERSTATE  
385

**LEGEND**

- ASPHALT PAVEMENT
- CONCRETE PAVEMENT
- PROPOSED BRIDGE



FIGURE \*E

MATCHLINE: SEE FIGURE \*B

MATCHLINE: SEE FIGURE \*B



I-85/I-385  
INTERCHANGE IMPROVEMENTS  
PAVEMENT TYPE



SMITH HINES RD

SMITH HINES RD



E BUTLER RD

**LEGEND**

- ASPHALT PAVEMENT
- CONCRETE PAVEMENT
- PROPOSED BRIDGE



FIGURE \*F