

**Early Utility Coordination Report**

**August 15, 2016**

**SCDOT Project Identification P027059  
SC41 (Road) Maiden Down Swamp Bridge Replacement  
Marion County**

**FOR: Brian Dix, SCDOT Assistant Program Manager, Pee Dee Regional Production Group**

**Early Utility Coordination Report:** Provide a list of all utility owners with contact information (Appendix A), site investigation documentation (Appendix B) and utility facility information; system/GIS map, as-built plans, etc. (Appendix C)

**Project Description:** Bridge replacement in place of SC41 (Road) over Maiden Down Swamp with road improvements for change in vertical and current clearance, drainage, guardrail, etc. requirements of approximately 1,475LF. SC41 will be closed for construction and traffic routed in off project detour.

**ROW STATUS:** Present SCDOT ROW is 37.5FT for roadway and 75FT for Bridge under Project 386-C. Acquisition of NEW SCDOT to roadway 60FT to 50FT and 80FT for drainage by SCDOT is currently under way and will be completed in 9 months +/-.

**Construction Sequence/Phasing:** Remove the existing bridge, grade for new abutments, install substructure, caps, set beams, place deck, continue grading for vertical tie-in, install guardrail and permanent seeding.

**SCDOT Project Milestone Dates:**

Preliminary Plans	Acquire ROW	Final Plans	Letting for Construction
<b><u>Completed</u></b>	<b><u>On going</u></b>	<b><u>2017</u></b>	<b><u>JUNE 2018</u></b>

**Subsurface Utility Engineering (SUE) Recommendation:** Initial investigation and utility owner comments it is recommended NO additional SUE effort is recommended beyond updating the. ULT file to SUE QLC with the information on existing facilities provided by the utility owners.

**Utility Information:**

**DUKE Energy (Progress Energy, Carolina Power & Light) DISTRIBUTION**

Contact – David McLawhorn (UC Synergetic) [dmclawhorn@ucsinc.com](mailto:dmclawhorn@ucsinc.com) 843.833.2746

Existing Location – 3Phase aerial on wood poles 39+/- left of center line, poles shown on roadway plans

Prior Right of Occupancy – SCDOT Project 386C Road SC41 from Road S to S Marion County March 12, 1970 set present 37.5FT or 45FT ROAD ROW, 75FT BRIDGE Maintenance ROW on new location and no poles are shown on sheet 19. DUKE has four poles (AV21BS-45C5, AV20BS-40C5, AV18BS-40C5, AV17BS-35C5) on/outside the 37.5FT ROAD ROW and one pole (AV19BS-40C5) inside 75FT BRIDGE Maintenance ROW. DUKE is researching prior right documents.

Identify Areas of Conflict – NO CONFLICT as long as crane is placed on centerline of road or right of center line and restrict boom from swinging within 10FT of conductors.

Relocation by – IF required, by DUKE Energy contract crews

### **Pee Dee Electric Cooperative (PDEC) TRANSMISSION**

Contact – Kelvin McGill

Existing Location – 115kVA transmission on wood H-frame structure crossing at station 92+00LT and 93+00RT, poles shown on roadway plans

Prior Right of Occupancy – SCDOT Project 386C Road SC41 from Road S to S Marion County March 12, 1970 set present right ROW and wood H-frame structures are shown outside the 37.5FT ROAD ROW. PDEC researching prior right documents.

Identify Areas of Conflict – NO CONFLICT as long as vertical clearance is not changed for proposed roadway grading.

Relocation by – IF required, by PDEC contract crews

**Charter (TWC) CATV** – NO FACILITIES in Project limits

### **AT&T (BellSouth) LOCAL**

Contact: - Mike Dean (MGR OSP PLNG & ENG DESIGN) [id6043@att.com](mailto:id6043@att.com) 843.662.5237

Existing Location – SC41 station LT shoulder has direct buried 2ea copper cables and 1ea fiber cable with records showing attached to existing bridge. SC412 station right has direct buried 1ea copper cable with records showing attached to existing bridge. No bridge attachments were notice during field investigation.

Prior Right of Occupancy – Encroachment inside Present SCDOT ROW

Identify Areas of Conflict - Bridge attachment, in line with proposed guardrail; abandon existing buried copper and fiber cables and relocate aerial copper and fiber cables to DUKE Energy poles.

Relocation by – By AT&T contract crews

### **MARCO Rural Water Company WATER**

Contact – Robert Winkeler (General MGR) [robinw@marcoruralwater.com](mailto:robinw@marcoruralwater.com) 843.423.4680

Existing Location – 12” Plastic WL ends at SC917 intersection north of the Project Begin station and ends south of the Project End station, MARCO does not cross Maiden Down Swamp.

Prior Right of Occupancy – WL inside the present SCDOT ROW by encroachment

Identify Areas of Conflict – NO CONFLICT identified per the ROW Plans and review of bridge plan for pile locations find no conflicts

Relocation by – by MARCO contractor

### **Utility Coordination Schedule:**

Early Utility Coordination (**AUGUST 15, 2016 COMPLETED**)

Initial Contact

Obtain existing utility system maps, plans, GIS maps, etc.

Identify significant facilities and impacts for schedule and/or budget

Preliminary Utility Coordination (JUNE 2017)

- 
- Recommendation of Prior Rights
  - Assessment of impacts to utility facilities
  - Utility Relocation – Early, During, Duration
  - Identify conflicts or NO CONFLICT letter
  - Analyze conflict points and recommend remediation
  - Develop Utility Conflict Analysis & Remediation Worksheet
  - Develop Remediation/Relocation Plan
  - Final Utility Relocation Submittal (**MARCH 2018**)
    - Provide one of the following: No Cost Letter or Utility Relocation Agreement with Relocation Plan and Cost Estimate
    - Prior Rights Supporting Documentation
  - Right-of-Way (**MAY 2016**)
  - Construction Let Date (**JUNE 2018**)

Appendix A - Utility owner's information

Appendix B - Site investigation documentation

Appendix C - Utility facility information; system/GIS map, as-built plans, etc.

**cc** Cedric Keitt, SCDOT Utility PM  
Scott Carney, GEL PM

# Appendix A

# Utility Owner's Information

**DUKE Energy (Progress Energy, Carolina Power & Light) DISTRIBUTION**

**Pee Dee electric Cooperative (PDEC) TRANSMISSION**

**AT&T (BellSouth) LOCAL**

**MARCO Rural Water Company WATER**

P027059 SC 41 Maiden Down Swamp SC811 Utilities  
December 16, 2015

**AT&T/D - BSZU45**

BSZU45  
(843) 536-7203  
Phone

**Duke Energy Progress (formerly Progress Energy)**

CPLZ05  
(843) 536-7203  
Electric

**Pee Dee Electric Cooperative**

PDEZ40  
(843) 536-7203  
Electric

**Time Warner - Murrells Inlet**

TWMIZ88  
(843) 536-7203  
Cable

SCDOT P027059 SC-41 Maiden Down Swamp Bridge Replacement Marion County										SCDOT Overhead Notification Letter	ICE Notification Letter	2nd ICE Notification	Initial Utility Response	
5/13/2016	SC811	Owner	Contact	Title	email	phone	address	City, ST, ZIP	SC811 Phone					
Electric	CPL205	DUKE Energy (ProgressEnergy/CarolinaPower&Light)	Highway Relocation		<a href="mailto:highway.relocation@duke-energy.com">highway.relocation@duke-energy.com</a>	919.431.4738	4690 Simms Creek Road	Raleigh, NC 27616	843.536.7203 (USIC)		5/13/2016	5/13/2016		
			Jackie Coley	PE HWY RELO PM	<a href="mailto:jackie.coley@duke-energy.com">jackie.coley@duke-energy.com</a>	919.661.4335	USIN T&D OPS				5/12/2016			
			Lashaunda Kackoon	HWY RELO Program Team	<a href="mailto:lashaunda.kackoon@duke-energy.com">lashaunda.kackoon@duke-energy.com</a>	919.431.4792								
			David McLawhorn	Contractor	<a href="mailto:dmc1awhorn@usinc.com">dmc1awhorn@usinc.com</a>	843.833.2746					5/18/2016		5/25/2016, Requested Present ROW Info, provided markup	
Electric	PDEZ40	Pea Dee Electric Cooperative (PDEC)	Kelvin McGill	Staking Tech	<a href="mailto:kmcgill@pdedeelectric.com">kmcgill@pdedeelectric.com</a>	843.292.4423	1355 East McIver Road	Darlington, SC 29540	843.536.7203 (USIC)		5/13/2016	5/13/2016	6/1/2016, line crosses SC41 and NO POLES in conflict	
CATV	TWMZ88	Charter (Time Warner Cable)	Doug Jones	HWY Relocation	<a href="mailto:douglass.jones@charter.com">douglass.jones@charter.com</a>	843.251.5094	11546 Bypass US17South	Murrells Inlet, SC 29576	843.536.7203 (USIC)		5/13/2016	5/13/2016		
			Jamie Scott	HWY Construction MGR	<a href="mailto:jamie.scott@charter.com">jamie.scott@charter.com</a>	843.251.5094	11546 Bypass US17South	Murrells Inlet, SC 29576						
			Roger Cleveland	Field Engineer	<a href="mailto:roger.cleveland@charter.com">roger.cleveland@charter.com</a>	843.251.5059	11546 Bypass US17South	Murrells Inlet, SC 29576						
			Stephen Morris	Construction PM SR	<a href="mailto:stephen.morris@charter.com">stephen.morris@charter.com</a>	843.250.8422	3235 South Cathua Drive	Florence, SC 29501			5/16/2016	5/16/2016	7/15/2016	
Telecom	BSZU45	AT&T/D	Mike Dean	Mgr OSP Planning & Engineer	<a href="mailto:m5043@att.com">m5043@att.com</a>	843.662.5237	1603 West Evans Street	Florence, SC 29501	843.536.7203 (USIC)		5/13/2016	5/16/2016	7/15/2016	8/10/2016 Plan markup with existing & proposed relocation
			Lee Hiburn	OSP Engineer	<a href="mailto:l5023@att.com">l5023@att.com</a>	843.615.6944								
Water	MAR71	MARCO Rural Water Company (MARCO)	Robert (Robin) Winkler	General Mgr	<a href="mailto:robwin@marcoruralwater.com">robwin@marcoruralwater.com</a>	843.423.4680	1935 Senator Gasque Road	Marion, SC 29571	843.423.4680		7/1/2016		7/5/2016, WATER DOES NOT CROSS SWAMP	
			Harold Snipes	Maintenance Supervisor	<a href="mailto:harold@marcoruralwater.com">harold@marcoruralwater.com</a>		P.O. 1139							
		Hanna Engineering LLC	Colton Cauthen	ET, Consultant for MARCO	<a href="mailto:colton@hannamengineering.com">colton@hannamengineering.com</a>	843.628.6800	821 West Lucas Street	Florence, SC 29501						
Sewer		NONE												
GAS		NONE												
Pipeline		NONE												
Railroad		None												
SCDOT	SCDOT		Andy Wicker	PM	<a href="mailto:wickerat@scdot.org">wickerat@scdot.org</a>	803.737.1041								
			Cedric Keriit	UD PM	<a href="mailto:keritc@scdot.org">keritc@scdot.org</a>	803.737.1407								
			Johnson Dean	District LC	<a href="mailto:jdean@scdot.org">jdean@scdot.org</a>	843.661.4710								
			Ken Hayes	Marion County BCE	<a href="mailto:hayeski@scdot.org">hayeski@scdot.org</a>	843.431.1135								
			Jeremy Jackson	Marion County ARCE	<a href="mailto:jacksonj@scdot.org">jacksonj@scdot.org</a>	843.431.1135								

---

# Appendix B

# Site Investigation

# Documentation

**W A R N I N G**

**AT&T**

**UNDERGROUND  
CABLE**



**CALL BEFORE  
YOU DIG**



*Know what's below  
Call before you dig*





WARNING



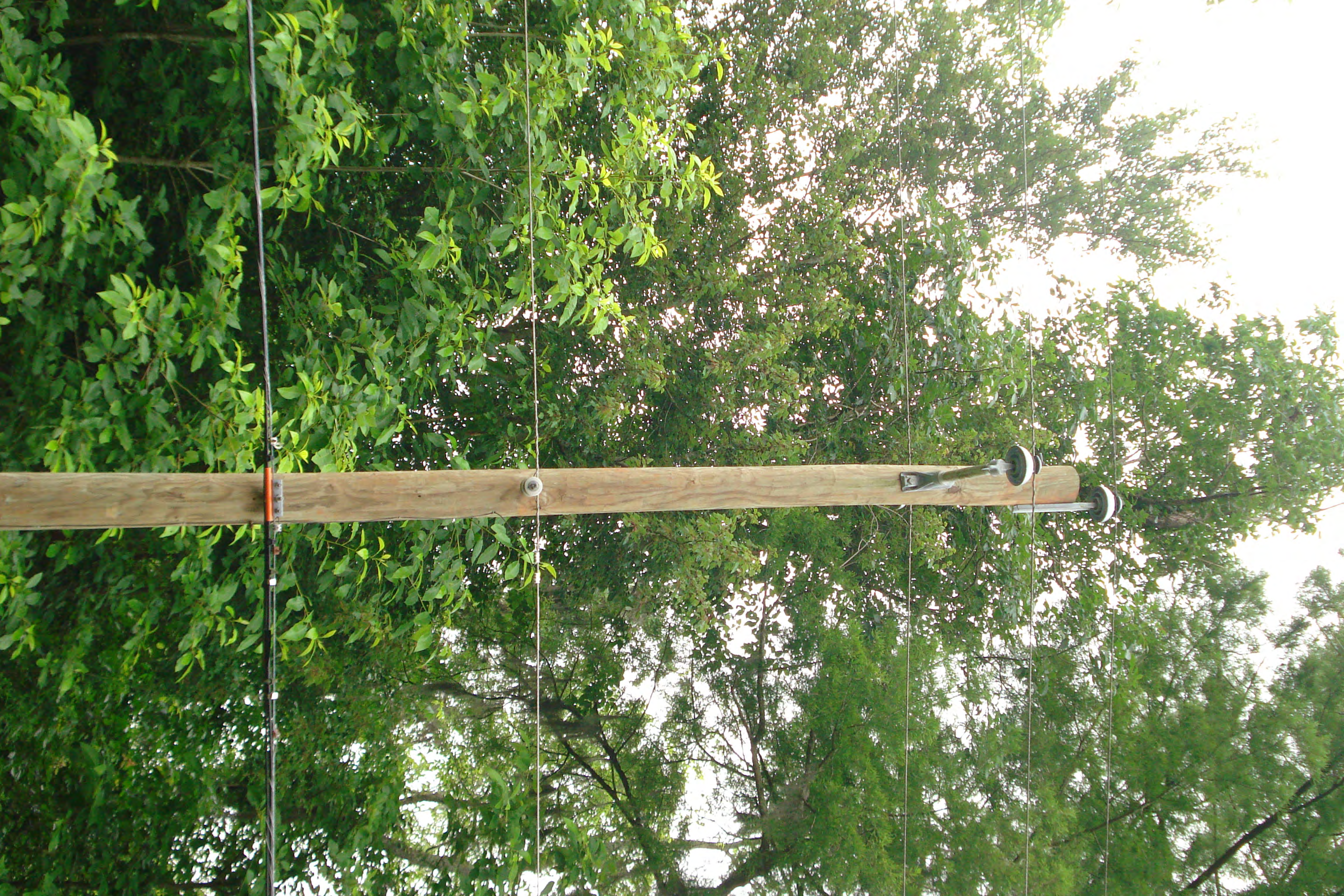
AV2BBS

↑ Dillon  
← Latta

917  
↙

41  
↑









Know what's below!  
Call before you dig!



CALL BEFORE  
YOU DIG



UNDERGROUND  
CABLE

AT&T

W A R N I N G



No  
Parking  
Below  
Easement

11444-80



W 19 BS

W 19 BS













GLENNIES DR









Z

STOP  
NO PARKING







---

Appendix C - Utility facility information;  
system/GIS map, as-built plans, etc.

DUKE Energy (Progress Energy, CP&L)

PEE DEE Electric Cooperative

AT&T (BellSouth)

MARCO Rural Water Company

May 13, 2016

Highway Relocation  
Duke Energy (Progress Energy, Carolina Power & Light)  
4690 Simms Creek Road  
Raleigh, NC 27616  
highway.relocation@duke-energy.com

REF: Design – Project ID No. P027059 – SC-41 Bridge over Maiden Down Swamp - Marion County

Dear Sir:

You were recently notified by the South Carolina Department of Transportation (SCDOT) that GEL Geophysics, LLC and Infrastructure Consulting & Engineering (ICE) are currently under contract to perform design services, including subsurface utility engineering and utility coordination for the referenced project. The purpose of this letter is to provide you the Project preliminary plans and design schedule to begin utility coordination efforts.

**Preliminary Plans** are attached to this notice. Please review the existing utility facility location, make corrections, add missing information (lines, type, material, size, etc.); identify impact/conflict between your utility facility with proposed roadway, drainage and bridge improvements. If your facilities are clear of the project limits, please submit a NO CONFLICT or NO FACILITY letter and return the marked up plans to me for updating Final Plans (utility plan sheet) before **August 1, 2016**.

**Submit Utility Relocation preliminary plan** with either a NO COST letter or certification of PRIOR RIGHT letter with easement/right-of-way documentation for a Utility Agreement so I may coordinate with other utilities and SCDOT. Please submit the Utility Relocation preliminary plan to me before **May 1, 2017**.

**Submit complete Utility Relocation packages:** either a NO COST or a Utility Agreement, with final relocation plan, itemized material/labor cost estimate and Application for Encroachment Permit for relocations inside SCDOT ROW to me before **April 1, 2018**.

To allow at least 30 days for utility relocation activities prior to the Construction Let Date in **June 2018**, please schedule utility materials to arrive and crew availability not later than **May 1, 2018**.

Please advise if you have any questions or need additional information.

Design - Project ID No. P027059 – SC41SC-41  
Marion Bridge over Maiden Down Swamp - Marion County

Sincerely,



Gus Kretschmer  
Utility Coordinator, ICE

cc: Jacqueline Coley PE, DUKE Energy Highway Relocation Program Manager  
Rebecca Breland, SCDOT, Program Manager  
CT York, SCDOT, Assistant Program Manager  
Ken Hayes, SCDOT, Resident Construction Engineer, Horry County  
Johnson Dean, SCDOT, Utility Coordinator District  
Scott Carney, GEL, Project Manager

ATTACHMENTS:

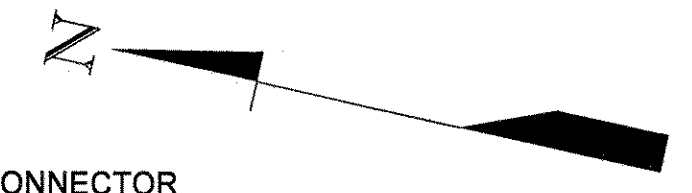
SCDOT Proposed Plans PDF dated 3/4/2016  
Design File r27059pp.dgn  
Design File r27509pp\_UC.dgn  
Google Earth File r27059pp-UC.kmz

FED. ROAD DIST. NO.	STATE	COUNTY	PROJECT ID	RTE. NO. SC	SHEET NO.
3	S.C.	MARION	P027059	RTE 41	6

SC RTE. 41

**DUKE Energy Markup existing pole information**  
**David Mclawhorn**  
**5/17/2016**

**UTILITY NOTE**  
 POWER - PROGRESS ENERGY  
 TELEPHONE - AT&T  
 WATER - MARION COUNTY  
 CABLE - TIME WARNER  
 GAS - NONE  
 SEWER - MARION COUNTY

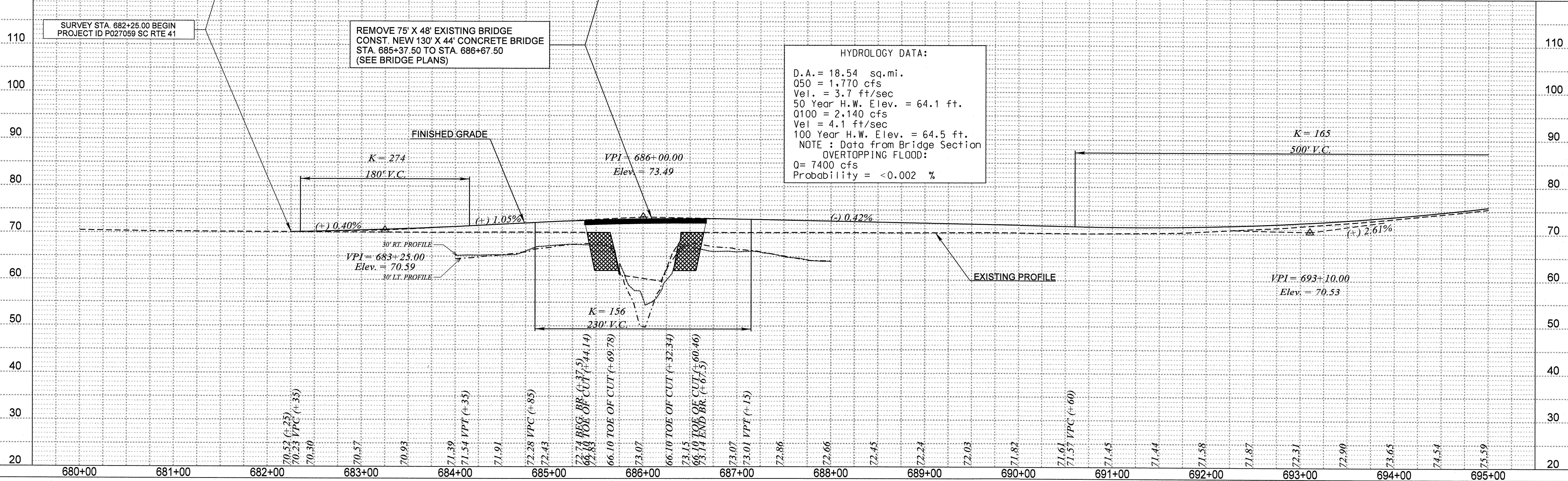
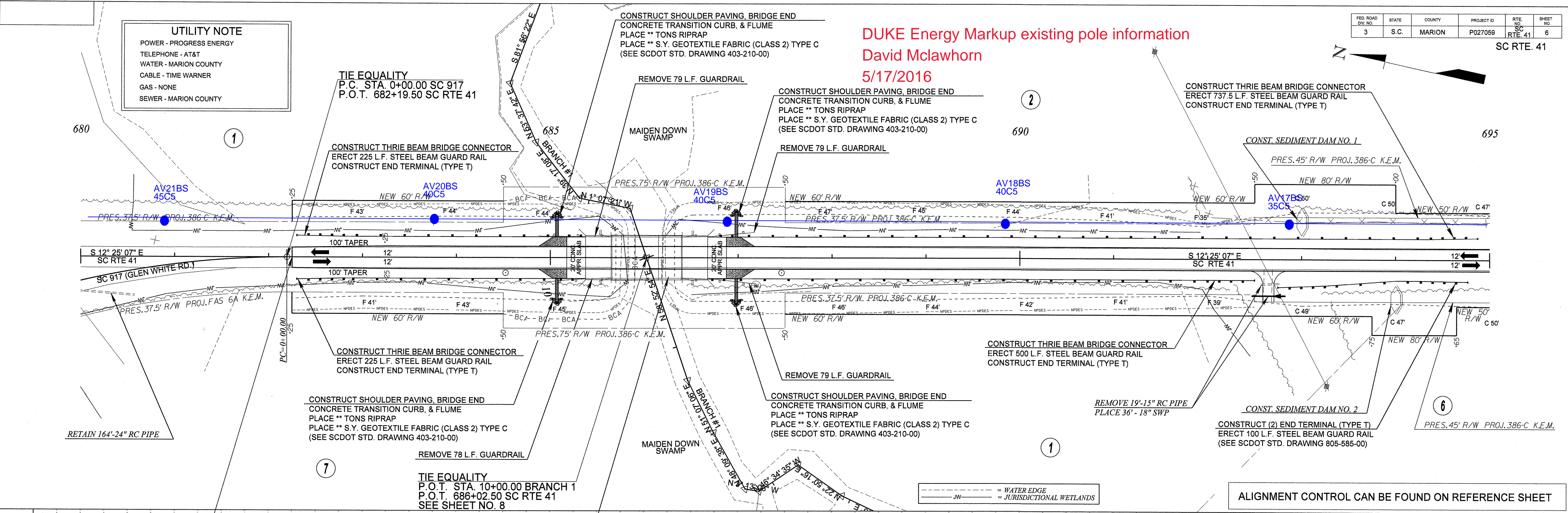


DATE	BY	REVISION

PLAN SHEET NO. 1  
 DATE: 18-FEB-2016  
 BY: Kinar dLR  
 P:\Mort\027059\_sc41\road\27059p1.dgn

DATE	BY	REVISION

PROFILE SHEET NO. 1  
 DATE: 18-FEB-2016  
 BY: Kinar dLR  
 P:\Mort\027059\_sc41\road\27059p1.dgn



ALIGNMENT CONTROL CAN BE FOUND ON REFERENCE SHEET



May 13, 2016

Mr. Kelvin McGill  
Staking Tech  
Pee Dee Electric Cooperative (PDEC)  
1355 East Mclver Road  
Darlington, SC 29540  
kmcgill@peedeeelectric.com

REF: Design – Project ID No. P027059 – SC-41 Bridge over Maiden Down Swamp - Marion County

Dear Mr. McGill:

You were recently notified by the South Carolina Department of Transportation (SCDOT) that GEL Geophysics, LLC and Infrastructure Consulting & Engineering (ICE) are currently under contract to perform design services, including subsurface utility engineering and utility coordination for the referenced project. The purpose of this letter is to provide you the Project preliminary plans and design schedule to begin utility coordination efforts.

**Preliminary Plans** are attached to this notice. Please review the existing utility facility location, make corrections, add missing information (lines, type, material, size, etc.); identify impact/conflict between your utility facility with proposed roadway, drainage and bridge improvements. If your facilities are clear of the project limits, please submit a NO CONFLICT or NO FACILITY letter and return the marked up plans to me for updating Final Plans (utility plan sheet) before **August 1, 2016**.

**Submit Utility Relocation preliminary plan** with either a NO COST letter or certification of PRIOR RIGHT letter with easement/right-of-way documentation for a Utility Agreement so I may coordinate with other utilities and SCDOT. Please submit the Utility Relocation preliminary plan to me before **May 1, 2017**.

**Submit complete Utility Relocation packages**; either a NO COST or a Utility Agreement, with final relocation plan, itemized material/labor cost estimate and Application for Encroachment Permit for relocations inside SCDOT ROW to me before **April 1, 2018**.

To allow at least 30 days for utility relocation activities prior to the Construction Let Date in **June 2018**, please schedule utility materials to arrive and crew availability not later than **May 1, 2018**.

Please advise if you have any questions or need additional information.

Sincerely,



Gus Kretschmer  
Utility Coordinator, ICE

cc: Rebecca Breland, SCDOT, Program Manager  
CT York, SCDOT, Assistant Program Manager  
Ken Hays, SCDOT, Resident Construction Engineer, Horry County  
Johnson Dean, SCDOT, Utility Coordinator District  
Scott Carney, GEL, Project Manager

ATTACHMENTS:

SCDOT Proposed Plans PDF dated 3/4/2016  
Design File r27059pp.dgn  
Design File r27509pp\_UC.dgn  
Google Earth File r27059pp-UC.kmz

May 16, 2016

Mr. Stephen Morris  
Construction Project Manager – Senior  
Time Warner Cable  
3235 South Cashua Drive  
Florence, SCV 29501  
[Stephen.morris@twcable.com](mailto:Stephen.morris@twcable.com)

REF: Design – Project ID No. P027059 – SC-41 Bridge over Maiden Down Swamp - Marion County

Dear Mr. Morris:

You were recently notified by the South Carolina Department of Transportation (SCDOT) that GEL Geophysics, LLC and Infrastructure Consulting & Engineering (ICE) are currently under contract to perform design services, including subsurface utility engineering and utility coordination for the referenced project. The purpose of this letter is to provide you the Project preliminary plans and design schedule to begin utility coordination efforts.

**Preliminary Plans** are attached to this notice. Please review the existing utility facility location, make corrections, add missing information (lines, type, material, size, etc.); identify impact/conflict between your utility facility with proposed roadway, drainage and bridge improvements. If your facilities are clear of the project limits, please submit a NO CONFLICT or NO FACILITY letter and return the marked up plans to me for updating Final Plans (utility plan sheet) before **August 1, 2016**.

**Submit Utility Relocation preliminary plan** with either a NO COST letter or certification of PRIOR RIGHT letter with easement/right-of-way documentation for a Utility Agreement so I may coordinate with other utilities and SCDOT. Please submit the Utility Relocation preliminary plan to me before **May 1, 2017**.

**Submit complete Utility Relocation packages:** either a NO COST or a Utility Agreement, with final relocation plan, itemized material/labor cost estimate and Application for Encroachment Permit for relocations inside SCDOT ROW to me before **April 1, 2018**.

To allow at least 30 days for utility relocation activities prior to the Construction Let Date in **June 2018**, please schedule utility materials to arrive and crew availability not later than **May 1, 2018**.

Please advise if you have any questions or need additional information.

Sincerely,



Gus Kretschmer  
Utility Coordinator, ICE

cc: Rebecca Breland, SCDOT, Program Manager  
CT York, SCDOT, Assistant Program Manager  
Ken Hayes, SCDOT, Resident Construction Engineer, Horry County  
Johnson Dean, SCDOT, Utility Coordinator District  
Scott Carney, GEL, Project Manager

ATTACHMENTS:

SCDOT Proposed Plans PDF dated 3/4/2016  
Design File r27059pp.dgn  
Design File r27509pp\_UC.dgn  
Google Earth File r27059pp-UC.kmz

May 13, 2016

Mr. Mike Dean  
Manager OSP Planning & Engineer  
AT&T/D  
1603 West Evans Street  
Florence, SC 29501  
ld6043@att.com

REF: Design – Project ID No. P027059 – SC-41 Bridge over Maiden Down Swamp - Marion County

Dear Mr. Dean:

You were recently notified by the South Carolina Department of Transportation (SCDOT) that GEL Geophysics, LLC and Infrastructure Consulting & Engineering (ICE) are currently under contract to perform design services, including subsurface utility engineering and utility coordination for the referenced project. The purpose of this letter is to provide you the Project preliminary plans and design schedule to begin utility coordination efforts.

**Preliminary Plans** are attached to this notice. Please review the existing utility facility location, make corrections, add missing information (lines, type, material, size, etc.); identify impact/conflict between your utility facility with proposed roadway, drainage and bridge improvements. If your facilities are clear of the project limits, please submit a NO CONFLCT or NO FACILITY letter and return the marked up plans to me for updating Final Plans (utility plan sheet) before **August 1, 2016**.

**Submit Utility Relocation preliminary plan** with either a NO COST letter or certification of PRIOR RIGHT letter with easement/right-of-way documentation for a Utility Agreement so I may coordinate with other utilities and SCDOT. Please submit the Utility Relocation preliminary plan to me before **May 1, 2017**.

**Submit complete Utility Relocation packages;** either a NO COST or a Utility Agreement, with final relocation plan, itemized material/labor cost estimate and Application for Encroachment Permit for relocations inside SCDOT ROW to me before **April 1, 2018**.

To allow at least 30 days for utility relocation activities prior to the Construction Let Date in **June 2018**, please schedule utility materials to arrive and crew availability not later than **May 1, 2018**.

Please advise if you have any questions or need additional information.

Sincerely,



Gus Kretschmer  
Utility Coordinator, ICE

cc: Rebecca Breland, SCDOT, Program Manager  
CT York, SCDOT, Assistant Program Manager  
Ken Hayes, SCDOT, Resident Construction Engineer, Horry County  
Johnson Dean, SCDOT, Utility Coordinator District  
Scott Carney, GEL, Project Manager

ATTACHMENTS:

SCDOT Proposed Plans PDF dated 3/4/2016  
Design File r27059pp.dgn  
Design File r27509pp\_UC.dgn  
Google Earth File r27059pp-UC.kmz

SHEET NO.	TOTAL SHEETS
1A	15

INDEX OF SHEETS		
SHEET NO.	DESCRIPTION	SHEET SUBTOTALS
1	TITLE SHEET	OMITTED
1A	R/W TITLE SHEET	1
2	SUMMARY OF ESTIMATED QUANTITIES	OMITTED
3	TYPICAL SECTION	1
4	R/W DATA SHEET	1
4A	PROPERTY STRIP MAP	1
5	GENERAL CONSTRUCTION NOTE	OMITTED
5A-5B	REFERENCE SHEETS	2
6-8	PLAN/PROFILE SHEETS	3
EC1	EROSION CONTROL DATA SHEET	1
X1-X5	CROSS SECTIONS	5
TOTAL		15



**BRIDGE PLANS BOUND  
UNDER SEPARATE COVER**

Design Reference for these plans is the:  
**2001**  
AASHTO "A Policy on Geometric Design of Highways and Streets"

Hydraulic Design Reference for these plans is the:  
**2009**  
Edition of SCDOT's "Requirements for Hydraulic Design Studies"

NPDES PERMIT INFORMATION  
Disturbed Area = 2.75 Acre(s)  
Permitted Area = 4.06 Acre(s)

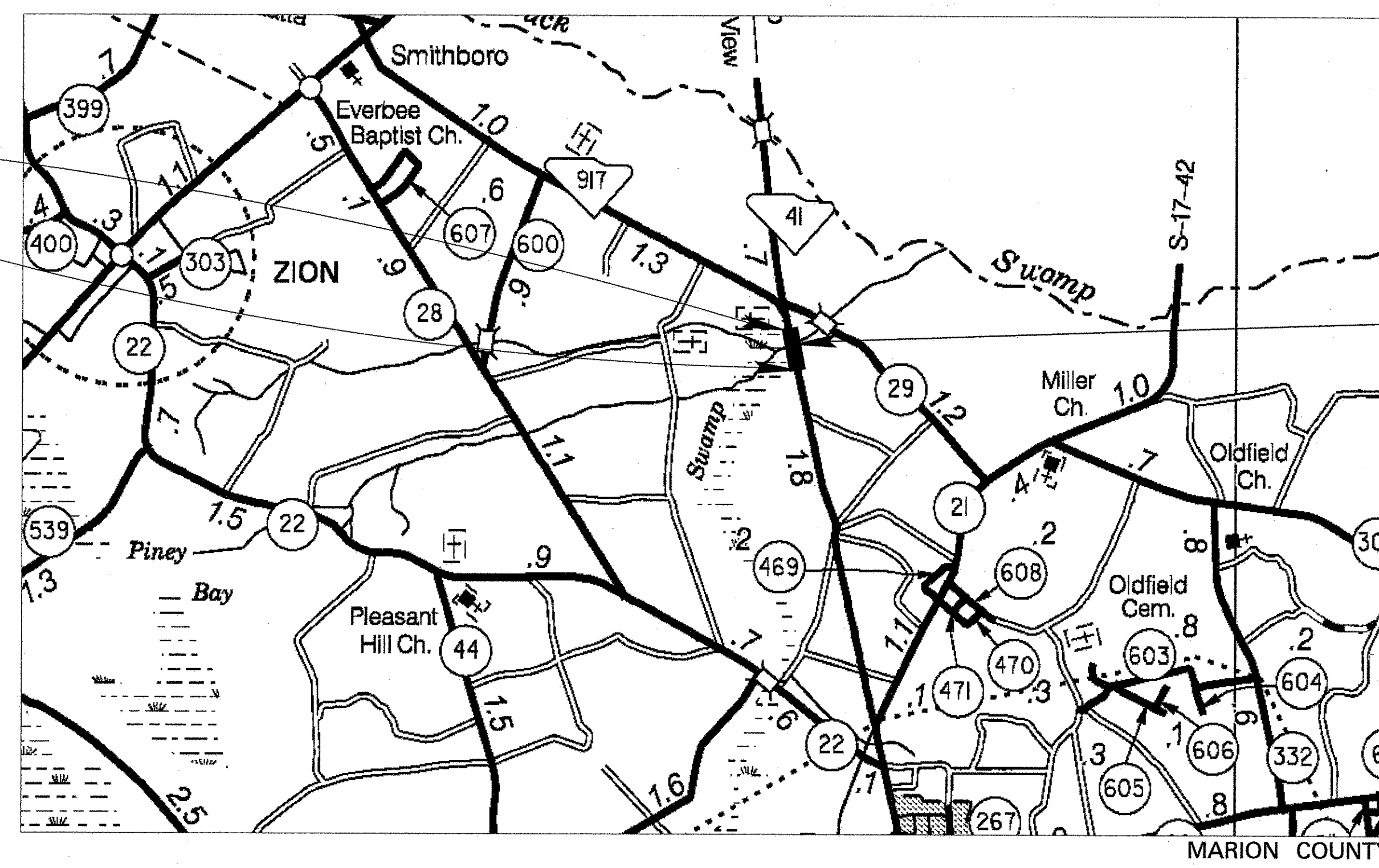
Approximate Location of Roadway is  
Begin  
Latitude 34°15'18.07"N  
Longitude 79°15'59.80"W  
End  
Latitude 34°15'3.76"N  
Longitude 79°15'56.31"W

Hydraulic and NPDES Design provided by:  
SCDOT  
Designs may be obtained from the SCDOT Regional Production Group

AT&T Southeast NO COST Relocation Sketch  
Mike Dean, MGR OSP PLNG & ENG DESIGN  
1603 West Evans Street  
Florence, SC 29501  
id6043@att.com  
(843) 662-5237  
(843) 245-3309  
August 10, 2016

PROPOSED PLANS  
FOR  
**MARION COUNTY**  
PROJECT ID. P027059  
S.C. ROUTE 41  
**BRIDGE REPLACEMENT OVER MAIDEN DOWN SWAMP**

PROJECT ID P027059 SC RTE. 41  
SURVEY STA. 682+25.00 TO STA. 697+00.00  
SEE SHEETS 6-8



CONSTRUCT 130'X44' CONCRETE BRIDGE  
FROM STA. 685+37.50 TO STA. 686+67.50  
(SEE BRIDGE PLANS)

ENVIRONMENTAL PERMIT INFORMATION			
USACE PERMIT	<input checked="" type="checkbox"/> YES	<input type="checkbox"/> NO	
NEPA DOCUMENT	<input checked="" type="checkbox"/> YES	<input type="checkbox"/> NO	
401 CERTIFICATION	<input checked="" type="checkbox"/> YES	<input type="checkbox"/> NO	
OCRM CAP	<input type="checkbox"/> YES	<input checked="" type="checkbox"/> NO	
NAVIGABLE WATERS	<input type="checkbox"/> SC	<input type="checkbox"/> USCG	<input checked="" type="checkbox"/> USACE <input checked="" type="checkbox"/> N/A

3 DAYS BEFORE DIGGING IN  
SOUTH CAROLINA  
**CALL 811**  
SOUTH CAROLINA 811 (SC811)  
WWW.SC811.COM  
ALL UTILITIES MAY NOT BE A MEMBER OF SC811

RAILROAD INVOLVEMENT?  
 NO

TRAFFIC DATA			
2018	ADT	2900	
2038	ADT	3900	
	TRUCKS	12	%

LAYOUT	
SCALE 1 INCH = 5280 FEET	
SC RTE. 41	
NET LENGTH OF ROADWAY	0.255 MILES
NET LENGTH OF BRIDGES	0.025 MILES
NET LENGTH OF PROJECT	0.280 MILES
LENGTH OF EXCEPTIONS	0.000 MILES
GROSS LENGTH OF PROJECT	0.280 MILES

EQUALITIES IN STATIONING  
**NONE**  
NOTE: EXCEPT AS MAY OTHERWISE BE SPECIFIED ON THE PLANS OR IN THE SPECIAL PROVISIONS, ALL MATERIALS AND WORKMANSHIP ON THIS PROJECT SHALL CONFORM TO THE SOUTH CAROLINA DEPARTMENT OF TRANSPORTATION STANDARD SPECIFICATIONS FOR HIGHWAY CONSTRUCTION (2007 EDITION) AND THE STANDARD DRAWINGS FOR ROAD CONSTRUCTION IN EFFECT AT THE TIME OF LETTING.

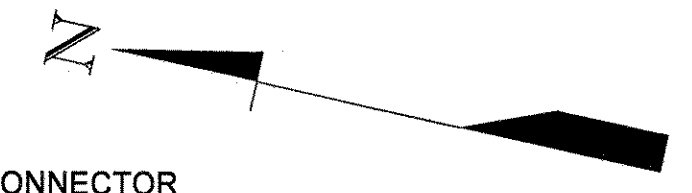
	RIGHT-OF-WAY		CONSTRUCTION	
	INITIAL	DATE	INITIAL	DATE
RPG - ROAD	GSR	2/18/16		
RPG - HYDROLOGY	SLR	2/18/16		
RPG - STRUCTURES	WBP	2/18/16		
RPG - GEOTECHNICAL	NRL	3/2/16		
PRECONSTRUCTION SUPPORT - ROAD	LLK	2/22/16		
PRECONSTRUCTION SUPPORT - STRUCTURES				
RPG - DESIGN MANAGER	JGS	2/18/16		
RPG - PROGRAM MANAGER	G.T.Y.	2/22/16		

For Right Of Way Acquisition:  
*Michael W. Barbree* 3/4/2016  
MICHAEL W. BARBEE, P.E. Date  
Regional Production Engineer

ENGINEER OF RECORD  
FOR CONSTRUCTION: \_\_\_\_\_ DATE \_\_\_\_\_

Kinar.dJR  
P:\Marion\27059.sc4\Road\27059rfs.dgn  
18-FEB-2016

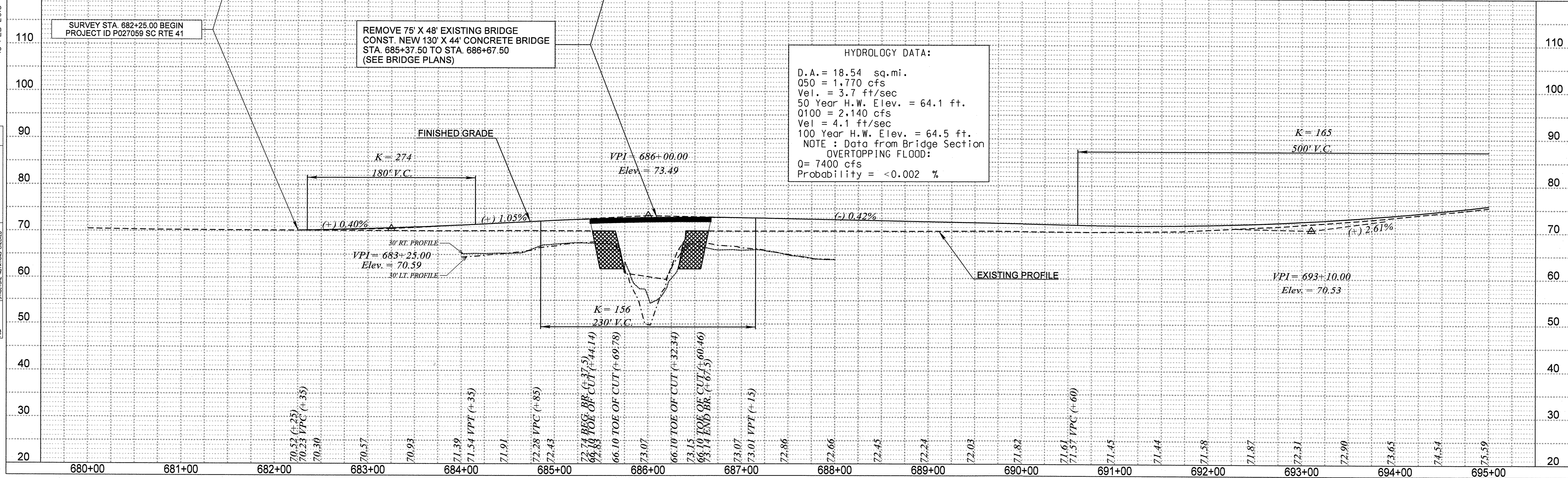
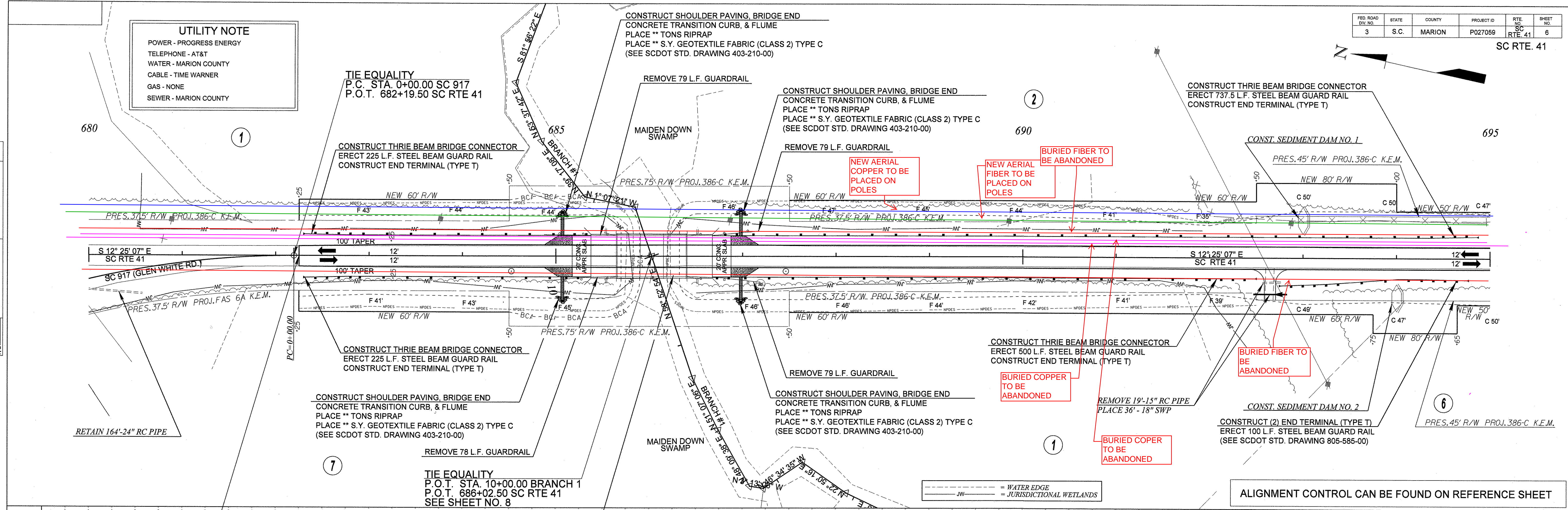
**UTILITY NOTE**  
 POWER - PROGRESS ENERGY  
 TELEPHONE - AT&T  
 WATER - MARION COUNTY  
 CABLE - TIME WARNER  
 GAS - NONE  
 SEWER - MARION COUNTY



DATE	BY	REVISION

Kinar.dwg  
 P:\Marion\27059\_sc41\road\27059p.dgn  
 18-FEB-2016

DATE	BY	REVISION



ALIGNMENT CONTROL CAN BE FOUND ON REFERENCE SHEET